

REVISIONS:				
NO.	DATE	DESCRIPTION	BY	AJS
1	12/25/18	REVISED PER PLANNING BOARD COMMENTS		

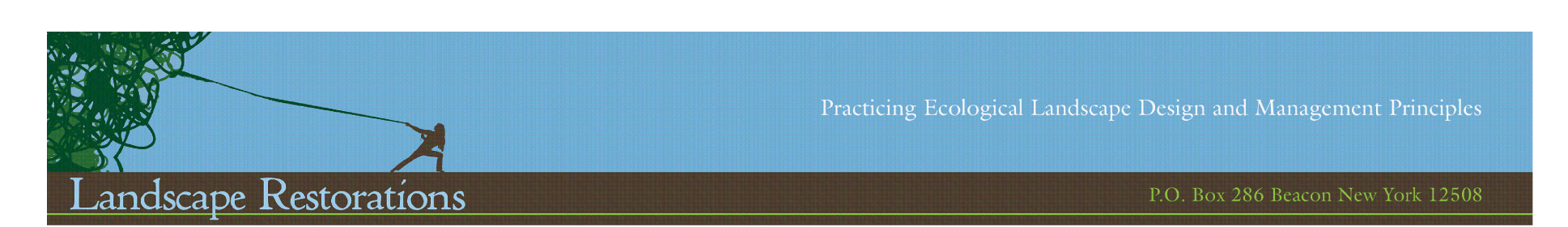
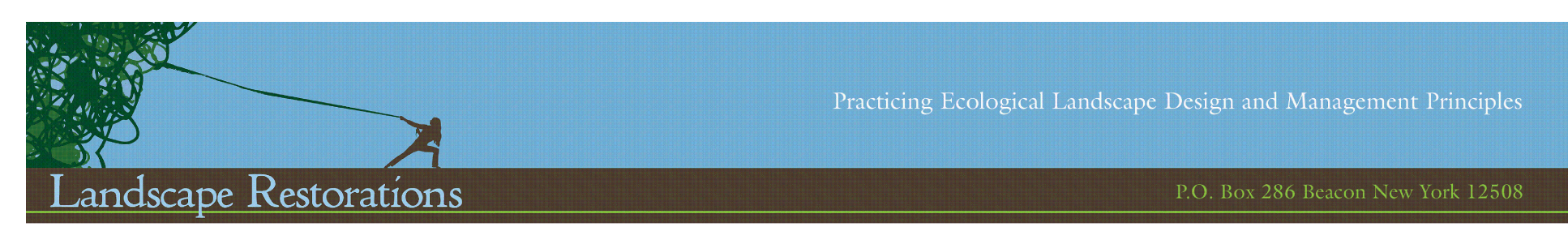
PLANT SCHEDULE		PHASE ONE		23-28 Creek Drive	
Created and compiled by D. Adamsons December 15 2018					
QUANTITY	KEY	BOTANIC NAME	COMMON NAME	SIZE	Planting Time
FERNS					
Trays	F-DP	<i>Demissa punctilobula</i>	Hay-scented fern	Plugs	Spring Fall
Trays	F-DI	<i>Dryopteris intermedia</i>	Evergreen Wood Fern	Plugs	Spring Fall
Trays	F-OC	<i>Osmunda cinnamomea</i>	Cinnamon Fern	Quarts	Spring Fall
Trays	F-PA	<i>Polystichum acrostichoides</i>	Christmas Fern	Plugs	Spring Fall
GRASSES					
Trays	G-AG	<i>Andropogon gerardii</i>	Big Bluestem	Plugs	Spring Summer
Trays	ECO-LAWN	<i>Buchloe dactyloides 'Texoka'</i>	Eco Lawn	Seed	Spring Summer
Trays	G-CA	<i>Carex appalachica</i>	Appalachian Sedge	Plugs	Spring Summer
Trays	G-CB	<i>Carex bromoides</i>	Bromoides Sedge	Plugs	Spring Summer
Trays	G-CP	<i>Carex pensylvanica</i>	Sedge	Plugs	Spring Summer
HERBACEOUS					
Trays	G-CL	<i>Chasmanthium latifolia</i>	Northern Sea Oats	Plugs	Spring Summer
Trays	G-IV	<i>Indian Switchgrass</i>	Indian Switchgrass	Plugs	Spring Summer
Trays	G-SS	<i>Schizachyrium scoparium</i>	Little Bluestem	Plugs	Spring Summer
HERBACEOUS					
Trays	H-AI	<i>Asclepias incarnata</i>	Swamp Milkweed	Plugs	Spring Summer
Trays	H-AI	<i>Asclepias tuberosa</i>	Butterfly Milkweed	Plugs	Spring Summer
Trays	H-AI	<i>Amonia tabernaemontana</i>	Common Bluestar	Plugs	Spring Summer
Trays	H-A	<i>Aster (NY and Woodland)</i>	Aster (NY and Woodland)	Plugs	Spring Summer
Trays	H-C	<i>Iris cristata</i>	Crested Iris	Plugs	Spring Summer
Trays	H-PR	<i>Polemonium reptans</i>	Jacob's Ladder	Plugs	Spring Summer
Trays	H-S	<i>Solidago</i>	Goldenrod	Plugs	Spring Summer
Trays	H-T	<i>Trillium</i>	Trillium	Plugs	Spring Summer
Trays	H-V	<i>Viola</i>	Viola	Plugs	Spring Summer
SHRUBS					
S-AA	<i>Amorpha fruticosa</i>	Indigo Bush	5 gal	Spring Fall	WR,CBE,CBW
S-AA	<i>Aronia arbutifolia</i>	Red Chokeberry	3 gal	Spring Fall	WR,BE
S-AM	<i>Aronia melanocarpa</i>	Black Chokeberry	3 gal	Spring Fall	WR,BE
S-CP	<i>Cornus rugosa</i>	Sweetfern	1 gal	Spring Fall	ALL
S-DL	<i>Diervilla lonicera</i>	Bush Honeysuckle	3 gal	Spring Fall	WR,NM,CBE,CB
S-HA	<i>Hamamelis virginiana</i>	Witch Hazel	10 gal	Spring Fall	CBE,CBW
S-IG	<i>Ilex glabra</i>	Inkberry	10 gal	Spring Fall	BE,CBW,WR
S-IVf	<i>Ilex verticillata female</i>	Winterberry	7 gal	Spring Fall	WR,CNE,CBW,NM
S-IVm	<i>Ilex verticillata male</i>	Winterberry	7 gal	Spring Fall	WR,CBE,CBW,NM
S-LB	<i>Lindera benzoin</i>	Spicebush	10 gal	Spring Fall	WR
S-MP	<i>Myrica pensylvanica</i>	Bayberry	5 gal	Spring Fall	WR,BE,NM
S-RA	<i>Rhus aromatica</i>	Aromatic sumac	3 gal	Spring Fall	BE,NM,HCS
S-RC	<i>Rosa carolina</i>	Carolina Rose	3 gal	Spring Fall	CBE,CBW,NM
S-RO	<i>Rubus odoratus</i>	Flowering Raspberry	3 gal	Spring Fall	CBE,NM,WR
S-XS	<i>Xanthoxia simplicissima</i>	Yellowroot	Plugs	Spring Fall	WR,NM,CBE,CB
TREES					
T-AB	<i>Abies balsamea</i>	Balsam Fir	5-7'	Spring Fall	CBW,NM
T-AR	<i>Acer rubrum</i>	Red Maple	5-7'	Spring Fall	WR,BE
T-AC	<i>Amelanchier canadensis</i>	Serviceberry	5-6'	Spring Fall	WR,CBE,CBW,BE
T-BL	<i>Betula lenta</i>	Black Birch	4-5'	Spring Fall	WR,CBW
T-BP	<i>Betula populifolia</i>	Grey Birch	4-5'	Spring Fall	ALL
T-CC	<i>Carpinus caroliniana</i>	American Hornbeam	5-7'	Spring Fall	CBW,CBE
T-CT	<i>Chamaecyparis thyoides</i>	Atlantic White Cedar	5-7'	Spring Fall	WR
T-CF	<i>Cornus florida</i>	Flowering Dogwood	5-7'	Spring Fall	BE,NM
T-CP	<i>Crotaegus phaenopyrum</i>	Washington Hawthorn	5-7'	Spring Fall	BE
T-IO	<i>Ilex opaca</i>	American Holly	5-7'	Spring Fall	BE,CBW
T-JV	<i>Juniperus virginiana</i>	Eastern Red Cedar	5'	Spring Fall	BE,NM
T-NS	<i>Nyssa sylvatica</i>	Blackgum	6-7'	Spring Fall	BE,NM
T-OV	<i>Ostrya virginiana</i>	Eastern Hop-Hornbeam	5-7'	Spring Fall	WR
T-PR	<i>Prinos rubens</i>	Red Spruce	5-9'	Spring Fall	BE,CBW
T-PP	<i>Pinus strobus</i>	Scrub Pine	5-9'	Spring Fall	BE,CBW
T-PO	<i>Plantanus occidentalis</i>	American Sycamore	7'	Spring Fall	WR
T-PA	<i>Prunus serotina</i>	Wild Black Cherry	3-4'	Spring Fall	NM,WR,CBE,CB
T-SD	<i>Salix discolor</i>	Pussy Willow	5'	Spring Fall	WR,CBE
T-OJ	<i>Quercus ilicifolia</i>	Scrub Oak	8-10'	Spring Fall	NM,BE
T-VP	<i>Viburnum prunifolium</i>	Blackhaw	6-7'	Spring Fall	NM
VINES					
V-PQ	<i>Parthenocissus quinquefolia</i>	Virginia Creeper	3 gal	Spring Fall	BE

HATCHING & LANDSCAPE LEGEND	
[Symbol]	CONCRETE SIDEWALK
[Symbol]	ASPHALT PAVING
[Symbol]	GRAVEL PATH (STREET EDITION)
[Symbol]	CONSERVATION BUFFER - WEST
[Symbol]	CONSERVATION BUFFER - EAST
[Symbol]	WETLAND RESTORATION AREA
[Symbol]	NATIVE MEADOW
[Symbol]	INDIAN SWITCHGRASS (S-IV)
[Symbol]	CUSTOM GRASS MIX - (ERMAN-CUST)
[Symbol]	SEEDS (G-CP)
[Symbol]	EVERGREEN SHRUB (S-IG)
[Symbol]	WETLAND RESTORATION AREA MIX
[Symbol]	PROPOSED NEW ORNAMENTAL NATIVE PLANT
[Symbol]	PROPOSED NATIVE EVERGREEN
[Symbol]	EXISTING TREE TO REMAIN (WITH CALIPERS)
[Symbol]	RE-PLANTATION / REPAIR PLANTINGS: BROWN = TREE; WHITE = SHRUB

SEED MIXES				
lbs	ERNMX-105 Native Meadow	Northeastern Native Mix	Seed/Plug April-October	NM
lbs	ERNMX-120 Native Wetland Restoration	Northeastern Grass and Forb	Seed/Plug April-October	WR
lbs	ERNMX-126 Native Meadow	Retention Basin Low Maint Mix	Seed/Plug April-October	NM
lbs	ERNMX-132-1 Native Meadow	Native Woods w Rye	Seed/Plug April-October	CBE
lbs	ERNMX-140 Native Meadow	Partially Shaded Native Mix	Seed/Plug April-October	CBE,CBW
lbs	ERNMX-153-1 Native Meadow	Showy NE Native Mix	Seed/Plug April-October	NM
lbs	ERNMX-155 Native Meadow	Deer Resistant Native Meadow Mix	Seed/Plug April-October	NM
lbs	ERNMX-180-1 Native Meadow	Rain Garden Mix	Seed/Plug April-October	NM
lbs	ERNMX-181-1 Native Meadow	Native Steep Slope with Rye	Seed/Plug April-October	CBE,CBW
lbs	ERNMX-181-2 Native Meadow	Native Steep Slope with Oats	Seed/Plug April-October	WR
lbs	ERNMX-183 Native Meadow	Native Detention Area Mix	Seed/Plug April-October	NM
lbs	ERNMX Custom Mix	Salt-tolerant, Shady Mix	Seed/Plug April-October	BE
lbs	ERNMX Custom Mix	Native Low Meadow	Seed/Plug April-October	HCS

AREA LEGEND	
BE	Building Envelope cover
CE	Conservation Buffer EAST of GI (Greenway)
CBE	Conservation Buffer WEST of GI (Greenway)
CBW	Conservation Buffer WEST of GI (Greenway)
HCS	Half Circle Seating Area
NM	Native Meadow cover
WR	Wetland Restoration

NOTE: REFER TO SHEET 2 FOR LIGHTING AND LANDSCAPE DETAILS

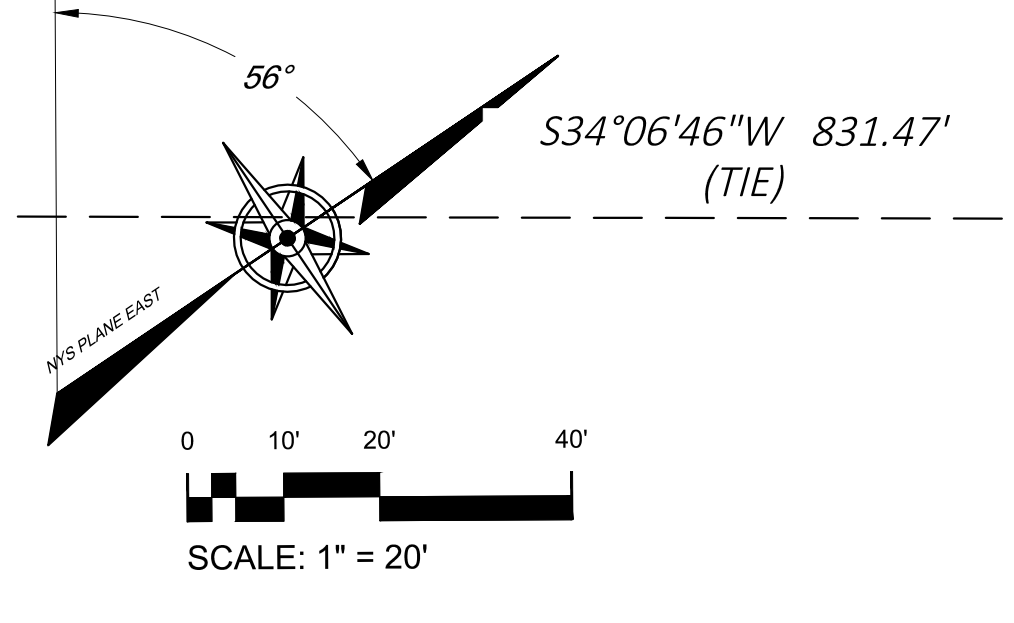
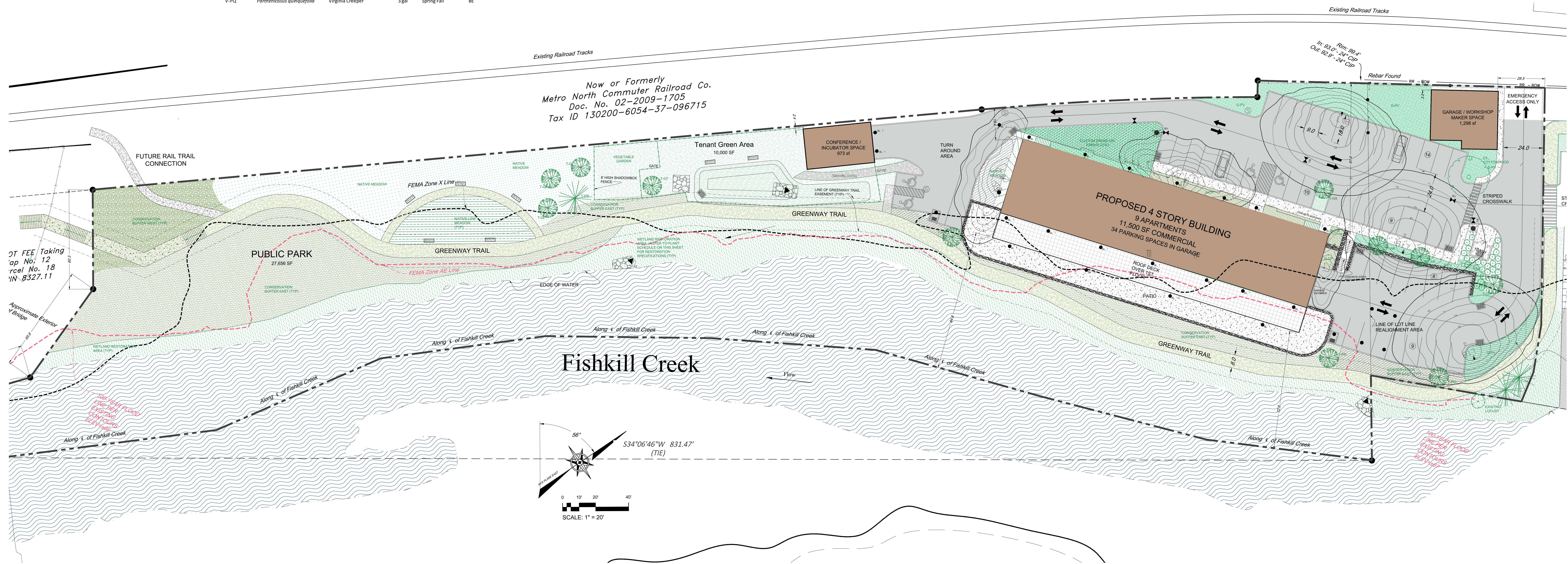


TREE PROTECTION

- Tree Protection shall be built around all trees designated by Owner. See LEGEND. This task shall be performed and/or supervised by an arborist associated with Landscape Designer.
- Tree Protection shall be honored by General Contractor, and all Contractors, and remain in place for life of project development.
- A penalty for tree damage and non-compliance with Tree Protection shall be discussed at first Site Meeting and written into GC contract and each penalty shall be billed to General Contractor.
- Tree Protection is defined as sturdy stakes every 4' connected by strong fencing (not orange nylon fencing) built outside each CRZ (Critical Root Zone), with KEEP OUT: PROTECTED TREE signs.
- CRZ is defined as extending from the trunk to just outside the Drip Line, or a distance of 1.5" per inch of DSH (Diameter at Standard Height), whichever is greater.
- Under Penalty, the following activities are not allowed within the CRZ:
 - Stockpiling of construction materials or demo debris
 - Vehicle or equipment parking
 - Trenching for utility installation or repair (unless pre-approved)
 - Changing soil grade by cutting or filling
 - Damaging of roots by grading, tearing or grubbing
 - Compaction of soil by equipment, vehicles, material storage and/or foot traffic
 - Contaminating soil from washing out equipment (especially concrete) and vehicle maintenance
 - Attaching anything to trees with nails, screws and/or spikes
 - Wound or break tree trunks or branches through contact with vehicles and heavy equipment
 - Wound trunks by string weed trimmers and lawn mowers
 - Cause injury by fire or excessive heat
- Most tree roots over 4" are likely to be structural roots. Cutting these roots could cause future catastrophic failure.
- Make all needed cuts to tree roots cleanly with sharp tools to encourage good wound closure; never tear with a backhoe.
- After project completion, maintain an "invisible" passive TPZ (Tree Protection Zone) around all important trees though-out their lives by maintaining a mulched, grass-free area around the tree so weed-trimmers and mowers are always kept at bay and foot traffic is kept off the inner CRZ.

PLANTING and LANDSCAPE NOTES

- Tree Protection shall be honored and respected during construction phase (see separate Tree Protection Notes).
- Woodland Area outside of work-scope shall be left intact other than the removal of dead, diseased and damaged trees in Phase One. In Phase Two (date to be determined), invasive management shall be implemented to begin select-removal of Black Locusts, Norway Maples, Ailanthus, Japanese Knotweed, Barberry, Rosa multiflora, Bittersweet and all invasive plant species.
- Utmost care will be undertaken to protect the integrity of Fishkill Creek banks and steep slopes.
- Absolutely no materials or liquids shall be dumped into Fishkill Creek or drains.
- No non-native plant species shall be introduced onto the site. All species shall be indigenous to the northeast region of North America.
- Disturbance of wild areas on the bank of Fishkill Creek created by construction of Greenway Trail require Conservation Buffers in order to help the areas heal and revert to native habitats. These areas are labeled as CBE (Conservation Buffer east of GT) and CBW (Conservation Buffer west of GT) and WR (Wetland Restoration).
- If a straight species is specified, no cultivars will be accepted without prior approval of designer.
- In level graded areas, soil shall be prepped by removing all construction debris, loose roots and stones larger than 3". In steep slope areas, do not remove any naturally-occurring stones or rocks, as these aid in stabilizing the slope. All duff, plant debris and material such as leaves, twigs, etc. shall remain in soil.
- Areas to be planted shall be marked and labeled by designer.
- Each new tree hole tree shall be twice the width of the rootball.
- Plant all plants so top of rootball is slightly above surrounding native earth (or brought-in soil).
- Burlap, wire, cords, ties and any wrapping materials must be removed from all rootballs before backfilling.
- No planting shall be done in muddy, rainy or frozen conditions.
- Test tree-pit for drainage before planting. Do not plant tree in pit if water is still evident after one hour. Contact site engineer or landscape designer if this condition is encountered.
- No plants will be accepted that display mechanical injury or species irregularities.
- All plants must be labeled when delivered to site.
- If planting is delayed for more than 6 hours after delivery, set plants in shade. Protect from weather and mechanical damage. Keep roots moist and cover with mulch.
- All tree-planting to be coordinated with as-built utilities. Trees to be located minimum of 5' from active lines.
- All trees shall be balled and burlap unless otherwise specified on Plant List.
- Contractor shall stake all plant locations and orientations in the field and obtain approval prior to installation.
- Contractor shall leave site neat and orderly during course of project, and store materials and equipment in owner-approved locations away from all trees and plants.
- If site conditions conflict with intended design, contractor shall alert Owner.
- Contractor shall enter and exit site through pre-approved routes only.
- No substitutions are to be made without the written or verbal consent of landscape designer and owner.
- Create a size-specific water-well around each plant, 3'- from center of tree, and mulch from the outside. Do not mulch crown.
- Water thoroughly after planting each plant. Water schedule to be determined.
- Spray for deer if planted in fall. Sometimes bucks mark their territory with their antlers.
- Keep Bed weed-free until plant is established.



Site Plan
Scale: 1" = 20'

Site Plan Application
Sheet 4 of 12 - Landscape & Lighting Plan

Owner:
Weber Projects III, LLC
11 Creek Drive
Beacon, New York 12508

Architect:
Arlyeh Siegel, Architect
84 Mason Circle
Beacon, New York 12508

Site / Civil Engineer:
Hudson Land Design
174 Main Street
Beacon, New York 12508

Surveyor:
TEC Land Surveying, P.C.
15C Tioronda Avenue
Beacon, New York 12508

Landscape Designer:
Landscape Restorations
P.O. Box 286
Beacon, New York 12508

23 - 28 Creek Drive
Beacon, New York
Scale: As Noted
October 23, 2018