

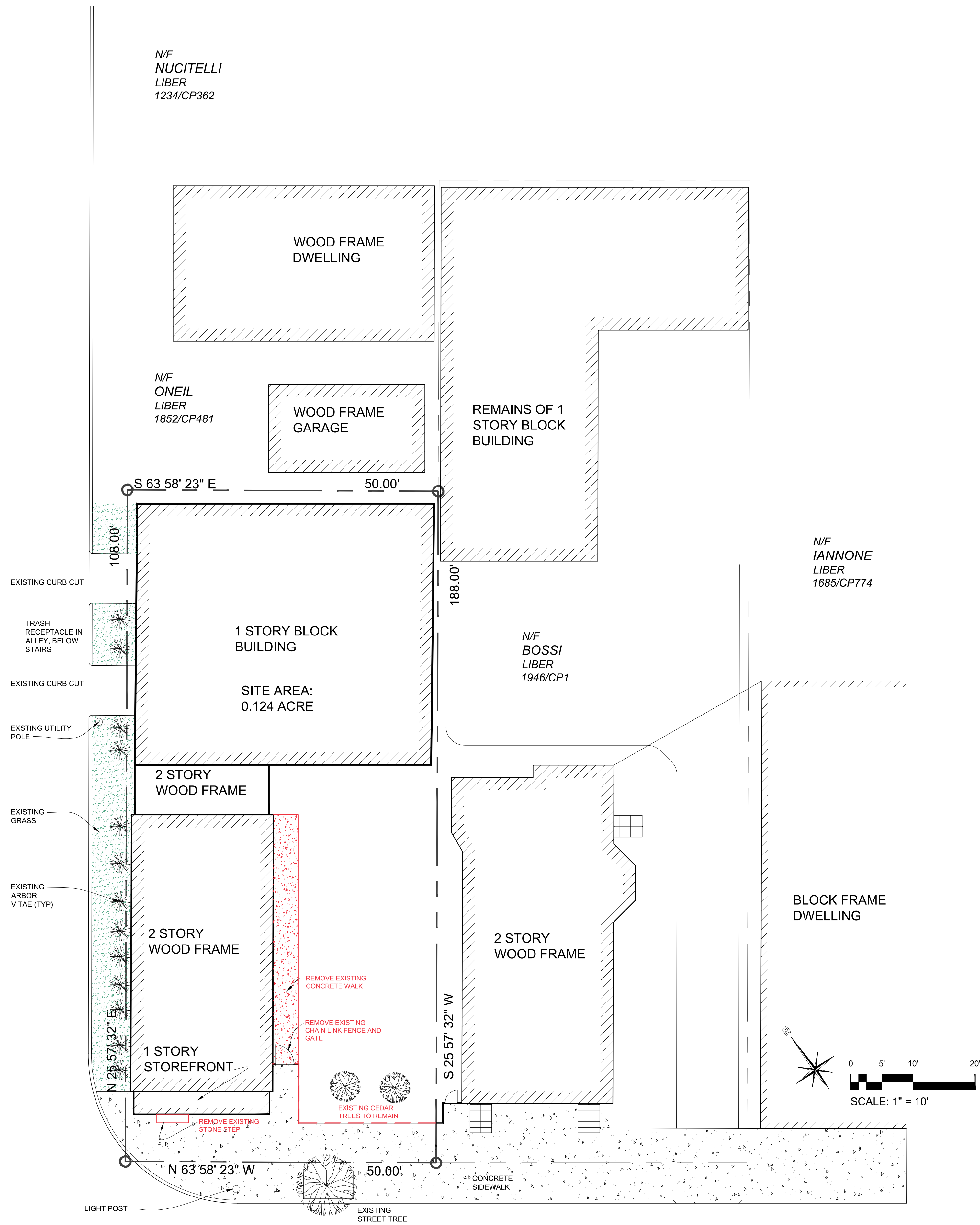
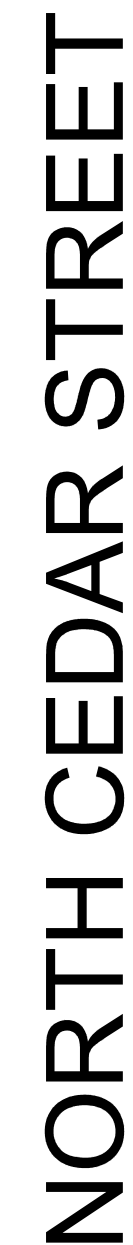
IN ABSENCE OF THE CHAIRMAN OR SECRETARY, THE ACTING CHAIRMAN OR ACTING SECRETARY
RESPECTIVELY MAY SIGN IN THIS PLACE.



NOTE: THE MANUFACTURER DOES NOT PROVIDE PHOTOMETRIC INFORMATION FOR THESE FIXTURES. FIXTURES WILL BE SHIELDED TO AVOID LIGHT SPILLAGE ONTO ADJACENT PROPERTIES, AND TO SHIELD FROM LIGHT PROJECTING UPWARD TO THE SKY



HAMPTON BAY
"1-LIGHT ZINC OUTDOOR WALL
LANTERN" MODEL # HSP1691A
60 W INCANDESCENT LAMP OR
LED EQUIVALENT - MAX COLOR
TEMPERATURE SHALL BE 3000K

[illegible]

Scale: 1" = 10'

Sheet 2 of 3 - Existing Conditions / Demolition Plan

Beacon, New York
Scale: 1" = 20'
November 27, 2018