

Full Environmental Assessment Form Part 1
for
Proposed Multifamily Development and Office Building

248 Tioronda Avenue
City of Beacon
Dutchess County, New York



Issued: September 10, 2018
Reissued: October 15, 2018

Prepared for:

Chai Builders Corp.
120 Route 59 Suite 201
Suffern, New York 10901

Prepared by:

Chazen Engineering, Land Surveying &
Landscape Architecture Co., D.P.C.
21 Fox Street Suite 201
Poughkeepsie, NY 12601
845-454-3980

Chazen Project No. 81750.00

This page intentionally left blank

TABLE OF CONTENTS

PROJECT NARRATIVE

1.0	PROJECT DESCRIPTION.....	1
1.1	Introduction	1
1.1	Project History.....	1
1.2	Current Project.....	1
2.0	LAND USE AND ZONING	2
2.1	Land Use.....	2
2.2	City of Beacon Comprehensive Plan	2
2.3	City of Beacon Zoning.....	4
2.4	City of Beacon Local Waterfront Revitalization Plan (LWRP).....	6
3.0	COMMUNITY SERVICES.....	6
4.0	SOILS, TOPOGRAPHY, AND WATER RESOURCES.....	6
4.1	Soils and Topography	6
4.2	Water Resources	7
4.3	Floodplain.....	7
5.0	UTILITIES.....	7
5.1	Water and Wastewater	7
5.2	Stormwater	8
6.0	TRAFFIC AND PARKING	8
6.1	Traffic	8
6.2	Parking.....	10
7.0	NOISE AND LIGHTING.....	10
7.1	Noise	10
7.2	Lighting.....	10
8.0	SOLID WASTE	10
9.0	CONTAMINATION HISTORY	11
10.0	ENDANGERED, THREATENED AND RARE SPECIES AND SIGNIFICANT HABITAT.....	11
11.0	HISTORIC AND ARCHEOLOGICAL RESOURCES	12
12.0	COMMUNITY CHARACTER	12

LIST OF TABLES

Table 4-1:	Characteristics of Soil Types within Project Site	6
Table 6-1:	Traffic Generation	9

FULL ENVIRONMENTAL ASSESSMENT FORM PART 1 FORM

FIGURES

- Figure 1: USGS Location Map
- Figure 2: Orthophoto Tax Map
- Figure 3: Land Use Map
- Figure 4: Soils Map
- Figure 5: Slopes Map
- Figure 6: Wetland, Stream, and Floodplain Map
- Figure 7: NYSDEC Environmental Resource Map
- Figure 8: NYSOPRHP Cultural Resource Information System (CRIS) Map
- Figure 9: Scenic and Aesthetic Resources Map

ATTACHMENTS

- Attachment A: NYSDEC Correspondence and US Fish & Wildlife Service (USFWS) Official Species List

Note: Site Plan submitted separately.

PROJECT NARRATIVE

This page intentionally left blank

1.0 PROJECT DESCRIPTION

1.1 Introduction

The Applicant, Chai Builders Corp., proposes the redevelopment of the northern portion of the former Tuck Industries manufacturing site with a 64-unit multifamily residential development and a 25,400 square foot (SF) office building, with associated parking. A Greenway Trail for public use is proposed along the Fishkill Creek. The 9.18-acre project site consists of two tax parcels identified as parcels 5954-16-993482 and 6054-45-012574 on the City of Beacon tax map. Access to the development is provided from Tioronda Avenue across the Metropolitan Transit Authority (MTA) property via easement. A second gated access for emergency and pedestrian use only is provided from Wolcott Avenue (NYS Route 9D). The proposed development is contained almost entirely within the former Tuck Industries development area.

The FEAF was completed utilizing the NYSDEC EAF Mapper, which provides automated responses to certain questions. The EAF Mapper tool sometimes indicates limited availability for some digital data. This narrative provides clarification for responses and/or reference used for the responses.

1.1 Project History

The project site is located in the Fishkill Creek Development (FCD) District, according to the City of Beacon Zoning Map. Development within this District requires both City Council and Planning Board approvals. The current property owner and previous Applicant, Beacon 248 Development, LLC, received Concept Plan and Special Permit Approvals by the City of Beacon City Council on August 4th, 2014, for the redevelopment of the site for a 100-unit multifamily residential development. The Planning Board was Lead Agency for the State Environmental Quality Review (SEQR), and a Negative Declaration was adopted on April 8, 2014, after determination that the project would not have any significant adverse environmental impacts. Planning Board Approvals for Subdivision (lot consolidation) and Site Plan were granted on January 13, 2015. The approved site plan layout included four residential buildings, a 1,200 SF clubhouse, and a swimming pool for use by residents only. The site plan also included a Greenway Trail along the Fishkill Creek for public use. An access easement was granted by MTA for the Tioronda Avenue access drive. The property owner subsequently was granted extensions of the Planning Board approvals for site plan and subdivision.

In 2017, the City Council adopted zoning amendments which included amendments to the FCD regulations. "Attached apartment and multifamily dwellings" is a permitted principal use that previously required a special permit from the City Council in the FCD District. However, the adopted zoning amendments eliminate the need for a special permit. "Professional and business offices in buildings that face streets" are also permitted in the FCD District. A FCD project requires concept approval and SEQR by the City Council and site plan approval by the Planning Board. The zoning amendments also result in a reduction in the number of dwelling units that would be permitted for this property.

1.2 Current Project

The current Applicant has presented a new concept plan that meets the amended FCD requirements. The number of dwelling units has been reduced from 100 units to 64 units, which include 28 one-bedroom

units and 36 two-bedroom units (100 bedrooms). The proposed site plan includes two residential buildings and a 25,400 SF office building. Many of the features that were incorporated into the approved plan have been retained in the currently proposed site plan, including the Greenway Trail and emergency access drive. The current plan continues to be located mostly within the area of development for the former Tuck Industries facility.

2.0 LAND USE AND ZONING

2.1 Land Use

The project site is located on Tioronda Avenue with additional road frontage on Wolcott Avenue. Figure 3 shows land uses within 1,000 feet of the site. The properties north of the project site are vacant residential land and the City of Beacon highway garage. The project site is separated from Tioronda Avenue by a railroad bed owned by MTA, and across Tioronda Avenue are single family residences and a public school. Adjacent to the project site to the south is a vacant industrial property, also located in the FCD district. Uses across the Fishkill Creek from the project site include single family residences, a two-family residence, vacant residential land owned by the City of Beacon, and an animal rescue facility. The proposed residential and office uses will blend in with the other residential uses in the area and will be consistent with future development of the FCD properties to the north and south. The project involves the redevelopment of a deteriorated former industrial site. The project will aesthetically improve the site with new landscaping, decorative lighting, and architecturally pleasing new buildings, as well as providing a public Greenway Trail along the Fishkill Creek.

2.2 City of Beacon Comprehensive Plan

The City of Beacon Comprehensive Plan adopted December 17, 2007, proposed a combination of new open spaces and parks balanced with new opportunities for commercial and residential development in several key areas of the City, including the former industrial sites along the Fishkill Creek. The 2007 Comprehensive Plan encouraged residential development at these old industrial sites, and actually provided for greater density (15 dwelling units per acre), stating that: *“Allowing these lands to be built at greater densities represents an efficient use of land in a location capable of supporting this level of development. The City expects to benefit from this through the physical revitalization of these areas.”*

The Comprehensive Plan Update adopted April 3, 2017, (the “Plan”) reflects land use, demographic and socioeconomic changes that have taken place since the 2007 plan was adopted. The updated recommendations in the Plan address environmental protection, economic development, affordable housing and improved community services and facilities. The primary focus of the 2017 Plan is the waterfront and train station area; therefore, many of the policies and recommendations of the 2007 Comprehensive Plan that applied to the project site are still applicable.

One of the Goals of the Plan is to “encourage a vibrant business community in harmony with existing commercial and industrial areas throughout the community. Employ all available mechanisms to meet the City’s objectives for economic development” (page 66), and Objectives and Recommendations under this Goal for vacant industrial sites is to “encourage the environmental cleanup and redevelopment of the unused or underutilized industrial sites along Fishkill Creek for new light industrial, commercial, or

residential uses, as appropriate. New uses proposed for the vacant sites away from Main Street should not conflict or compete unduly with existing uses in the City” (page 68).

The goals of the Plan that relate to “*Environmental Resources*” include to “*preserve environmentally significant features and create an open space system of sufficient size to reserve adequate areas for the protection of water related resources, wildlife, and land forms of particular environmental value. The rare assets of the City, such as the Hudson River and Fishkill Creek, should be protected, as should the Hudson Highlands on the slopes of Mt. Beacon*” and to “*encourage high environmental standards for development and infrastructure, develop sources of renewable energy and improve the environmental performance of City-owned property (page 24).*” One of the objectives of this goal is to “*establish and preserve open space corridors along Fishkill Creek and the Hudson River, and seek open space linkages to the large areas of open space in the Hudson Highlands on the slopes of Mt. Beacon*”. The proposed public Greenway Trail is consistent with this goal and objective, as the trail area along the creek is preserved with a conservation easement, and extends across the site to allow connection to adjacent properties along the creek.

The goal of the Comprehensive Plan that relates to “*Population and Residential Development*” includes “*(1) strive to maintain a variety of housing opportunities that area accessible to a wide variety of income levels*”; “*(4) encourage residential development of vacant and underutilized former industrial sites*”; and “*(5) ensure continued racial, ethnic, age and economic diversity of the population through encouraging a wide range of housing choices*” (page 52). The City’s creation of the Fishkill Creek Development (FCD) district represents implementation of this goal and these objectives. The project is consistent in that it is a mix of uses which include market rate residential housing along with a public Greenway Trail. The project will comply with the requirements for affordable-workforce housing per Article IVBX of the zoning code. Stormwater management will include green infrastructure practices such as bioretention.

The goal of the Comprehensive Plan that relates to “*Commercial, Office, and Industrial Development*” is to “*encourage a vibrant business community in harmony with existing commercial and industrial areas throughout the community. Employ all available mechanisms to meet the City’s objectives for economic development*” (page 66). An objective of this goal (Objective F) is to “*encourage the environmental cleanup and redevelopment of the unused or underutilized industrial sites along Fishkill Creek for new light industrial, commercial, or residential uses, as appropriate. New uses proposed for the vacant sites away from Main Street should not conflict or compete unduly with existing uses in the City*” (page 68).

The project consists of the redevelopment of the former Tuck Industries manufacturing site for a multifamily residential development and office building. The project site was listed in the NYSDEC’s Environmental Remediation Database as a Site Code 314044, formerly operated as a tape manufacturing facility. The listing was the result of leaking drums and storage tanks that contained solvents and solvent recovery system waste which resulted in soil contamination. The industrial buildings were demolished and removed, and the site was remediated to the satisfaction of NYSDEC, and is ready for redevelopment, consistent with this goal and objective of the Comprehensive Plan.

The goal of the Comprehensive Plan that relates to “*Recreation and Community Facilities*” is that “*community services for all age groups should be provided consistent with the economic growth of the City and its available resources. Regional facilities should be encouraged to locate in the City. Develop a recreational open space system of sufficient size and locational qualities to meet the complete range of recreational needs for the people*” (page 142). An objective of this goal is to “*continue to develop*

Greenways along the Hudson River and Fishkill Creek for public recreation, and provide linkages to trails towards the Hudson Highlands and the slopes of Mt. Beacon” and to “determine the future use of the railroad tracks along Fishkill Creek for vehicles capable of utilizing the tracks or for a bicycle and pedestrian path, and implement the decision” (page 144).

The project includes a Greenway Trail along the Fishkill Creek that will be accessible to the public and which can connect to adjacent properties. The proposed Greenway Trail is likely to alleviate some of the pressure on other public parks and recreational facilities in the City.

Based on this information, the project is consistent with the City of Beacon Comprehensive Plan.

2.3 City of Beacon Zoning

The project site is situated in the Fishkill Creek Development (FCD) District as designated by the City of Beacon zoning regulations. According to Article IVC, *Fishkill Creek Development (FCD) District*, the purposes of the FCD District include:

- A. *Encourage the development and/or redevelopment of undeveloped or underutilized industrial properties along the Fishkill Creek in a manner that provides a mix of residential and nonresidential uses. Properties in this category are generally more remote from the Central Business District, but offer larger sites for a flexible range of compatible nonresidential uses.*
- B. *Establish and preserve open space corridors along Fishkill Creek and the Hudson River, and seek open space linkages to the large areas of open space in the Hudson Highlands on the slopes of Mount Beacon.*
- C. *Continue to develop greenways along the Hudson River and Fishkill Creek for public recreation, and provide linkages to trails towards the Hudson Highlands and the slopes of Mount Beacon. Improve boat access to Fishkill Creek and the Hudson River. Determine the future use of the railroad tracks along Fishkill Creek for vehicles capable of utilizing the tracks or for a bicycle and pedestrian path, and implement the decision.*

The project is consistent with the purposes of the FCD District, as it represents redevelopment of an abandoned industrial site, provides a mix of uses, preserves a buffer along the Fishkill Creek, and provides a Greenway Trail for public use which can connect to future trails along the creek on adjacent properties. The trail extends a distance of approximately 1,270 feet, representing a significant addition to the City’s proposed Fishkill Creek Greenway & Heritage Trail (FCG&HT) Master Plan fulfillment. This trail will connect to Wolcott Avenue by means of a stairway and by access along the emergency access to Wolcott Avenue, and to the Sisters property to the south. Public access to the trail is also provided from Tioronda Avenue.

According to Section 223-41.13.D, each FCD proposal requires SEQR and concept plan approval by the Beacon City Council and site plan approval by the Beacon Planning Board. These reviews may proceed simultaneously. The Zoning Law Section 223-41.13.B specifically permits “attached apartment and multifamily dwellings” and “professional and business offices in buildings that face streets” in the FCD district. Section 223-41.14 provides the bulk requirements for the FCD District. The proposed density of 64 dwelling units is permitted by zoning, without the use of available incentives that would increase the maximum density. A zoning compliance table is provided on Sheet T1 of the site plan set, and density

calculations are provided on Sheet EC1. The maximum residential development density in the FCD district per Section 223-41.14B is 11 dwelling units per acre of lot area, where lot area on all development proposals involving more than three acres is calculated by deducting any lot area with existing, pre-development very steep slopes of 25 percent or more as defined in Section 223- 63, covered by surface water, within a federal regulatory floodway, or within a state or federally regulated wetland. Additionally, a minimum of 25 percent of the total development's floor area shall be permitted nonresidential uses other than dwelling units or artist live/work spaces, which must be built out before or concurrently with the residential development of the site. Less nonresidential square footage may be granted by the City Council for the voluntary and guaranteed inclusion in the project of desirable environmental, transportation, or other substantial public benefits which would not otherwise be required of the project, as determined at the sole discretion of the City Council as part of the concept plan approval.

Section 223-41.13(3)(b) provides a list of conditions and standards for the City Council's approval of a FCD concept plan. These standards include the preservation of open space along the Fishkill Creek and the provision of a public Greenway Trail along the creek that would connect to future trails on adjacent properties.

The project provides a buffer along the Fishkill Creek to preserve existing vegetation and significant trees, as well as viewsheds along this corridor. The setback from the Fishkill Creek as measured from the top of the creek bank varies from approximately 35 feet to 95 feet, with an average setback of 69 feet, which exceeds the minimum required setback of 25 feet and the minimum required average setback of 50 feet. The layout was designed to avoid 100-year floodplain areas and steep slopes. Site development is fitted to the topography and soil so as to create the least potential for vegetation loss and site disturbance. The project avoids the steeper slopes and floodplain areas. The buffer along the creek will be protected by a conservation easement as required. This will supersede the existing 6-foot easement along the Fishkill Creek shown on the filed subdivision map. The approved site plan was endorsed by the City of Beacon Greenway Trail Committee. The proposed Greenway Trail has been relocated to avoid wetlands and floodplain areas.

Approximately 5.95 acres of the 9.18-acre site will be disturbed for the project. During construction, protective fencing will be placed at or one foot beyond the drip line of trees that will be preserved as shown on the plan. Temporary vegetation sufficient to stabilize the soil will be provided on all disturbed areas as needed to prevent soil erosion, in accordance with the SWPPP. New planting shall be given sufficient water, fertilizer and protection to ensure establishment.

The project meets the Fishkill Creek development design standards set forth in Section 223-41.13.I, to the extent applicable at the concept plan stage. Parking requirements and information are provided in Section 6.2.

Since the project is consistent with the Zoning regulations, no significant adverse impacts will result from the project.

2.4 City of Beacon Local Waterfront Revitalization Plan (LWRP)

The project is consistent with the Beacon LWRP. Policy #25 of the LWRP adopted March 7, 2011, lists 13 viewsheds that should be protected which contribute to the scenic quality of the coastal area. None of the views extends over the subject development site, or over any nearby site in the Fishkill Creek Corridor. The project is consistent with the applicable LWRP recommendations for development in scenic viewsheds, including setback from the Fishkill Creek shoreline to preserve the privacy and grade-separation of the pedestrian trail along the Creek. Section 12.0, Community Character, provides a description of the proposed architecture and preliminary information regarding visual impacts.

Since the project is consistent with the LWRP, no significant adverse impacts are anticipated. A Coastal Consistency determination will be required.

3.0 COMMUNITY SERVICES

Police protection is provided by the City of Beacon Police Department. The project site is within the City of Beacon Fire District, which has three fire stations located at 425 Main Street, 57 East Main Street, and 13 South Avenue. Buildings will be sprinklered, and the proposed site plan includes a gated access drive from Wolcott Avenue for emergency access only, since the main access crosses an MTA railroad line. The Police Department and Fire Department will have the opportunity to review and provide comments on the project during the site plan review process. Therefore, the project is not expected to result in any adverse impacts in regard to police, fire, or emergency services.

4.0 SOILS, TOPOGRAPHY, AND WATER RESOURCES

4.1 Soils and Topography

Figure 5 shows the soil types that are expected to be present on the project site, and Table 4-1 provides characteristics of these soil types, according to Dutchess County Soil Survey information available in GIS and the Natural Resource Conservation Service website.

Table 4-1: Characteristics of Soil Types within Project Site

SOIL SYMBOL	SOIL TYPE	SLOPES	DRAINAGE	DEPTH TO WATER TABLE (FT)	DEPTH TO BEDROCK (INCHES)
Ud	Udorthents, smoothed	mostly 0 to 8% but 8 to 25% on sides of excavations and along highways	somewhat excessively to moderately well	>3.0 Nov-Jun	>60
W	Water	NA	NA	0	NA

Figure 5 shows slopes on the site, which vary from 0% to greater than 20%. There are no areas of “very steep slopes”, which are defined in Section 223-63 of the zoning regulations as “an area of land with a gradient of 25% or more extending over a contiguous land area of at least 10,000 square feet”.

The project is not expected to result in any significant adverse impacts related to soils or topography.

4.2 Water Resources

According to the NYSDEC Environmental Resource Map (Figure 7), the site does not contain nor is contiguous to a State regulated wetland or associated adjacent area. According to Figure 7, the project site is contiguous to the Fishkill Creek, a NYSDEC stream identified as H-95, a tributary of the Hudson River (NYCRR Title 6 Chapter X Subchapter B Section 862.6 Table 1 Item 237). This stream is classified as a Class C stream in the vicinity of the project site; therefore, it is not regulated as a protected water, but may be regulated by the NYSDEC as a navigable waterbody under Article 15, Use and Protection of Waters. Wetlands on the site were delineated in 2011 with additional delineation on July 23, 2013. Aquatic resources on this property include the Fishkill Creek, floodplain wetlands associated with and adjacent to Fishkill Creek, and a tributary which flows from Tioronda Avenue across the site to Fishkill Creek. All aquatic resources on the site would be regulated by the US Army Corps of Engineers (USACOE). The wetland delineation will be updated by a wetland biologist, and any necessary permits will be determined. Therefore, no significant adverse impacts to water resources are anticipated as a result of the project.

4.3 Floodplain

According to the National Flood Insurance Program Flood Insurance Rate Map (FIRM), City of Beacon, New York, Community Panel 360217, a portion of the project site along the Fishkill Creek is located within Flood Zone AE, which is described as an area of the channel of a stream plus any adjacent floodplain areas that must be kept free of encroachment so that the 1% annual (100-year) chance flood can be carried without substantial increases in flood heights. No building construction is proposed within Zone AE.

5.0 UTILITIES

5.1 Water and Wastewater

The project will be served by City of Beacon municipal water and sewer service. A 10" water main and 8" sewer main are located along Tioronda Avenue.

According to the NYSDEC Design Standards for Intermediate-Sized Wastewater Treatment Systems, March 2014, an apartment is expected to result in 110 gallons per day (gpd) per bedroom water usage and wastewater generation, which incorporates a reduction for the use of water saving plumbing fixtures. An office building is expected to result in 15 gpd per employee, with an additional 20% reduction for the use of water saving plumbing fixtures. Thus, the project with 100 bedrooms would be expected to result in 11,000± gallons per day water usage and wastewater generation. The Urban Land Institute *Employment and Parking in Suburban Business Parks: A Pilot Study*, 1986, Table 14, estimates a mean employment density of 347 SF per employee, which results in an estimated 73 employees for the 25,400 SF office building. Thus, the office building would be expected to result in 876 gpd, after applying the 20% reduction. Therefore, the total estimated water usage and wastewater generation for the project is estimated to be 11,876 gpd. Detailed plans and specifications will be submitted to the DCDOH for approval of the proposed water and sewer infrastructure as part of the site plan review.

5.2 Stormwater

The project will result in a disturbance area of 5.95 acres of the 9.18-acre site, but virtually all of the disturbance is within the area already disturbed by the factory buildings, parking areas, and other areas associated with the industrial development. The project will increase the impervious area by 0.78 acres. As a redevelopment project with an increase in overall impervious area, treatment of stormwater will be provided for 100% of the additional new impervious area and 25% of the existing disturbed impervious area. The project proposes to use a combination of standard stormwater management practices and alternative practices. The site will continue to discharge stormwater runoff to the Fishkill Creek. A downstream analysis was performed for the previous project. Pre- and post-development surface runoff rates will be evaluated for the 1-, 10-, and 100-year 24-hour storm events. Comparison of pre- and post-development watershed conditions at the design point in the Fishkill Creek will demonstrate that the project will not have a significant adverse impact on the adjacent or downstream properties or receiving water courses. Therefore, extended detention of stormwater will not be required for the proposed redevelopment project. An Erosion and Sediment Control Plan will be provided and shall be employed during the construction phase to protect off-site waters from the adverse effects of sedimentation and erosion. Therefore, the project is not expected to result in any adverse impacts in regard to stormwater.

6.0 TRAFFIC AND PARKING

6.1 Traffic

Access to the project site is provided from Tioronda Avenue over an at grade crossing easement granted by the MTA. This access was used for many years when the Tuck Industries manufacturing facility was in operation. The grade crossing provides access both to the project site and to the adjoining Sisters property, avoiding multiple accesses onto Tioronda Avenue. The Filed Subdivision Map (FM #10970 filed February 20, 2000) provides for a shared access. The Applicant will offer emergency access to other owners of the FCD properties subject to contribution of a fair share of the costs of building the emergency access. The 555 South Avenue property has its own entrance, at a point approximately 2,400 feet south of the entrance to Beacon 248.

The general interior configuration of the project road system is shown on the plans. The road system provides for circulation by means of a left turn inside the site to reach the proposed buildings, and a right turn inside the site to reach Sisters property.

The project will generate new traffic in the vicinity of the project site, since the site is currently vacant. All traffic will be oriented to travel to and from the site via the intersection of Tioronda Avenue with Wolcott Avenue/Route 9D. The present access design is to prohibit arrivals to the site from the south, and prohibit left turns out of the site to travel south on Tioronda Avenue. This traffic routing meets the needs of travelers, since Wolcott Avenue provides the best routing in either direction to I-84, the train station, and Route 9D going either north or south. It also protects the neighborhoods to the south and west of the site from additional traffic through local neighborhoods. The limitation on turning movements does not create any traffic difficulties for the residents of the project or for the local community.

The Institute of Transportation Engineers (ITE) Trip Generation Manual, 10th Edition, 2017, provides trip generation rates by land use categories, using different variables. Table 6-1 provides estimates for traffic

generation for the two proposed uses on the site for the weekday a.m. peak hour of adjacent street traffic and the weekday p.m. peak hour of adjacent street traffic.

Table 6-1: Traffic Generation

LAND USE	Land Use Code	AM Peak		PM Peak	
		Rate	vte's	Rate	vte's
Multifamily Housing (Mid-Rise) (64 dwelling units)	221	0.36 vte's per dwelling unit	23	0.44 vte's per dwelling unit	28
General Office Building (25,400 SF)	710	1.16 vte's per 1,000 SF GFA	29	1.15 vte's per 1,000 SF GFA	29
Total			52		57
vte = vehicle trip end					

Thus, the project with 64 dwelling units and 25,400 SF of office space is expected to generate 52 vte's during the weekday a.m. peak hour of adjacent street traffic and 57 vte's during the weekday p.m. peak hour of adjacent street traffic. These rates do not exceed the SEQR threshold of 100 vte's.

The previously approved project with 100 dwelling units was expected to generate slightly more traffic, with 53 vte's during the weekday a.m. peak hour of adjacent street traffic and 73 vte's during the weekday p.m. peak hour of adjacent street traffic. Since the estimated traffic generation for the current project is expected to be less than that of the approved project, no significant adverse impacts to traffic are anticipated.

A Traffic Impact Study dated November 13, 2013, was prepared, and was supplemented by another study dated March 20, 2014. The March 2014 Supplemental study evaluated the traffic movements considering also the traffic to be generated by potential development of the Sisters property and the Beacon Terminals 555 South Avenue property, both of which are also within the FCD district. The March 2014 study concludes that even with the development of the FCD parcels to the south, all intersections studied will continue to operate at a LOS "A" (excellent) with the exception of the Wolcott Avenue/Tioronda Avenue intersection, where the Wolcott Avenue approaches will operate at LOS "B" (good) and the Tioronda Avenue approaches will operate at LOS "A" (excellent).

A significant portion of the former manufacturing facility traffic consisted of truck traffic. Truck traffic generated by the proposed office use will be minimal.

Sight distance is excellent at the proposed Wolcott Avenue access. The sight distance looking south from the Tioronda access will exceed AASHTO standards with the removal of existing vegetation.

Temporary traffic generated during demolition and construction activities includes construction employees and the delivery of equipment and materials. The project is not expected to result in any adverse impacts in regard to temporary traffic during construction.

6.2 Parking

Parking is provided in a surface lot located between the proposed office building and residential buildings, and within a parking garage located below grade that extends under and between the two residential buildings. According to the City of Beacon Zoning Code Section 223-26.F, a multifamily residential use requires 1 space for each dwelling unit plus 1/4 space for each bedroom, and a professional office use requires 1 space for each 200 square feet of gross floor area, excluding utility areas. Therefore, the 64-unit residential development with 28 one-bedroom units and 36 two-bedroom units (100 bedrooms total) requires 89 parking spaces and the 25,400 SF office building requires 127 parking spaces, for a total required parking of 216 spaces. This requirement is both a maximum and minimum for an FCD project. The proposed site plan provides a total of 220 parking spaces, which exceeds the required parking.

Per Section 223-26.H(b), a minimum of 1 loading space for the first 20,000 square feet of GFA, is required plus one space for each additional 40,000 square feet of GFA or major portion thereof. Therefore, the project with 25,400 SF of office space is expected to require 1 loading space, which is shown on the site plan.

7.0 NOISE AND LIGHTING

7.1 Noise

The project is not expected to result in an increase in noise levels above local ambient noise levels after completion of construction.

The proposed construction activities may result in temporary noise that exceeds local ambient noise levels. These activities will be limited to the hours of 7:00 AM to 7:00 PM Monday through Saturday, and all motorized equipment used in construction activity shall be operated with a muffler, in compliance with the City of Beacon Code Chapter 149, Noise, Section 149-6.F. Therefore, the project is not expected to result in any adverse impacts with regard to noise.

7.2 Lighting

All exterior lighting will be downward directed, and will be of such type and location and will have such shading to prevent the source of light from being seen from any adjacent residential property or from the street in accordance with Section 223-14.B of the zoning regulations. Lighting will consist of decorative full cut-off lighting with International Dark-Sky Association-approved "dark sky friendly" performance. The average level within the parking lots, access, and sidewalks will be sufficient to promote safety and encourage pedestrian use. Lighting photometrics and details will be provided during the site plan review process. Light pole locations are shown on Sheet SP2 of the site plan set.

8.0 SOLID WASTE

FEAF Question D.2.r requests information on solid waste generation for commercial or industrial projects only (not for residential uses). According to the Development Impact Assessment Handbook, Urban Land Institute, 1994, an office use is expected to generate 0.001 tons per employee per day. Thus, the proposed office building is expected to generate 0.073 tons of solid waste per day or 2 tons per month. Solid waste

will be picked up regularly by a licensed solid waste hauler for disposal at the Dutchess County Resource Recovery Agency facility in Poughkeepsie. Recyclable materials will be separated onsite and carted to this facility for recycling.

9.0 CONTAMINATION HISTORY

The project site was listed in the NYSDEC's Environmental Remediation Database as Site Code 314044, formerly owned by Tuck Industries and operated as a tape manufacturing facility. The listing was the result of leaking drums and storage tanks that contained solvents and solvent recovery system waste (primarily heptanes and toluene), which resulted in soil contamination. The NYSDEC website indicates that the has been remediated and assigned a classification of C, which means that the NYSDEC has determined that remediation has been satisfactorily completed under a remedial program. The site has been delisted from the NYS Registry of Inactive Hazardous Waste Disposal Sites per NYSDEC correspondence dated October 11, 2002.

10.0 ENDANGERED, THREATENED AND RARE SPECIES AND SIGNIFICANT HABITAT

The NYSDEC Environmental Resource Map shows the southern portion of the site within an area with a known occurrence of a rare animal (Figure 7). Correspondence from the NYSDEC New York Natural Heritage Program dated July 24, 2013, identified the site as being near a waterfowl winter concentration area and an anadromous fish concentration area, and also indicated the presence of non-breeding Bald Eagle. By email dated August 8, 2013, the NYSDEC indicated that the non-breeding occurrence is associated with wintering eagles and known roosting location, and that this roosting location was at the mouth of Fishkill Creek at the Hudson River at Denning's Point. This location is approximately 0.77 miles from the project site. According to the NYSDEC, there was no record of a breeding nest site within one mile of the project, but indicated that this should be reassessed annually until the project is constructed. The National Bald Eagle Management Guidelines also recommend that the project minimize disruptive activities and development in the flight paths between nests, roost sites and important foraging areas; locate water dependent facilities away from foraging areas, avoid boating near foraging areas, and protect and preserve potential roost and nest sites by retaining, to the extent practicable, mature trees and old growth stands within 0.5 miles of the water. The project does not propose any marina or boating activities, and the project will retain much of the wooded vegetation along Fishkill Creek. The activities proposed on the site are less disruptive than previous on-site activities associated with the former manufacturing facility and the Metro-North railroad. The project site will be reviewed annually for any nests until construction is completed. Updated information regarding endangered and threatened species has been requested from NYSDEC.

The US Fish & Wildlife Service (USFWS) Official Species List (Attachment A) indicates the potential for the Indiana Bat, Northern Long Eared Bat, and Dwarf Wedgemussel in the vicinity of the project site. The USFWS List indicates that there are no critical habitats within the project area under USFWS jurisdiction. During review of the previously approved project, the US Fish and Wildlife Service did not express any concerns regarding possible use of the site by Bald Eagle. While the NYSDEC indicated that the closest occurrence of Indiana Bat is more than 2.5 miles away, the USFWS requested that the project limit tree clearing to October 1 to March 31, minimize removal of large trees, use cut-off lighting, and not use pesticides or herbicides in any stormwater basins.

Consultation with NYSDEC and USFWS will be completed as required. Therefore, no significant adverse impacts to endangered, threatened or rare species are anticipated as a result of the project.

11.0 HISTORIC AND ARCHEOLOGICAL RESOURCES

According to the New York State Office of Parks, Recreation and Historic Preservation (NYSOPRHP) Cultural Resource Information System (CRIS) mapping (Figure 8), the project site is not substantially contiguous to nor does it contain a building site, or district, listed on the National or State Register of Historic Places. The CRIS mapping indicates that the Wolcott Avenue bridge over the Fishkill Creek (aka Cooperation Bridge) was determined to be eligible for listing on the Register (evaluated under NYSOPRHP Project Number 93PR0331, USN 02741.000362). The mapping also shows the project site as being located within a known archaeologically sensitive area.

A Phase 1A Archeological Investigation dated July 2013 was conducted by Hartgen Archaeological Associates, Inc. The report concluded that as a result of the impacts related to the continuous industrial development of the property combined with the impacts surrounding the removal the buildings associated with the New York Rubber Company facility, it is likely no significant cultural deposits, specific to the early to mid-19th century development of the property remain. The Phase 1A report was submitted to NYSOPRHP for review, under the previously approved project. Correspondence from NYSOPRHP dated September 27, 2013, requested additional project information due to the project's location adjacent to a National Register-Eligible district to the east. The Applicant then submitted the additional requested information, and in correspondence dated December 23, 2013, NYSOPRHP concluded that the massing of the buildings as proposed at that time was appropriate for the site, and determined that the approved project would have No Adverse Impact upon cultural resources in or eligible for inclusion in the State and National Register of Historic Places. Information and plans for the currently proposed project will be upload to NYSOPRHP CRIS for review and determination. Since the project is similar to the approved project in regard to disturbance area and architecture, it is anticipated that NYSOPRHP's determination will remain the same, and no impacts to cultural resources will occur.

12.0 COMMUNITY CHARACTER

The project involves the redevelopment of a deteriorated former industrial site. The project will aesthetically improve the site with new landscaping, decorative lighting, and architecturally pleasing new buildings, as well as providing a public Greenway Trail along the Fishkill Creek. The properties north of the project site are vacant residential land and the City of Beacon highway garage. The project site is separated from Tioronda Avenue by a railroad bed owned by MTA, and across Tioronda Avenue are single family residences and a public school. Adjacent to the project site to the south is a vacant industrial property, also located in the FCD district. Uses across the Fishkill Creek from the project site include single family residences, a two-family residence, vacant residential land owned by the City of Beacon, and an animal rescue facility. The proposed residential and office uses will blend in with the other residential uses in the area and will be consistent with future development of the FCD property to the north and south.

Architectural elevations are provided. The architecture and building materials depicted on the exterior elevations of the buildings are quality examples of urban architecture typical of older City of Beacon structures. The buildings are designed to present a subtly varied, yet ordered and cohesive appearance in terms of architectural style. Architecturally pleasing from all sides, they will be consistent with older

industrial buildings in the city, but with more residential proportions. Scales, forms and materials used are appropriate to ensure that buildings and other structures are compatible with and add interest to the landscape. The elevations are clad predominately in brick. Third story and cellar level elevations are set back to mitigate the perceived height of the buildings on all sides. The setbacks are clad in black metal panels which complement the brick cladding well. Windows, doors and trim will be black powder coated aluminum. Painted black steel balconies will be provided for a number of units. Proposed retaining walls on the site will be poured in place concrete with fieldstone veneer. Proposed retaining walls will be segmental concrete block walls in earthtone colors. The proposed refuse container will be screened from view by a cedar fence, and will comply with the City's requirements in Section 223-14.C.

Cross sectional views have been prepared which show that the properties to the west are much higher in elevation than the project property, and the site drops off to a lower elevation east of the tracks. Since the project site is much lower than much of the surrounding area, only the higher portions of the proposed buildings are expected to be visible.

The City's Local Waterfront Revitalization Plan designates 13 local viewsheds under Policy 25A that are designated for protection. The applicant's development site is not within any of the designated viewsheds. The proposed development area is not located in a designated LWRP viewshed; however, the project design is consistent with the applicable LWRP recommendations for developing in scenic view sheds.

The proposed layout maintains the original land form, as it utilizes the existing disturbed area from the former heavy industrial development, while the area at the top of the bank of the creek is preserved. The natural grade changes across the site (west to east), serve to screen the parking and lower the height of the buildings as viewed from Tioronda Avenue and from residential properties across Tioronda Avenue.

The access road to Wolcott Avenue does not present adverse visual impacts. The new wall required for the access to Wolcott Avenue is substantially lower than the existing wall associated with Tioronda Avenue itself. The new wall serves to hide some of the graffiti on the Tioronda wall. The applicant intends to design plantings to soften views of the new wall (to be refined during site plan review by the Planning Board).

The Greenway Trail will connect to the property to the South. An official "Greenway Trail" on the property to the south does not currently exist; however, there is a 6-foot trail easement along the property boundary with the Fishkill Creek, which was designated at the time the property was subdivided. At the north end of the project site, the Trail connects to Wolcott Avenue. The Greenway Trail will be constructed to the guidelines of the City's FCG&HT Master Plan. The provision of the trail easement is a major benefit to the City of this project. The width of the proposed trail easement varies from 10 feet to 20 feet. Presently, the City has only a 6-foot wide easement at the property edge, pursuant to the filed subdivision map. The project site contains a very attractive section of waterfront, including views of a waterfall. Extensive existing natural vegetation between the project and the creek will help screen the buildings from views across the creek.

The project will enhance the site, thus improving the value and development capability of nearby properties.

This page intentionally left blank

FULL ENVIRONMENTAL ASSESSMENT FORM (FEAF) PART 1 FORM

This page intentionally left blank

Full Environmental Assessment Form
Part 1 - Project and Setting

Instructions for Completing Part 1

Part 1 is to be completed by the applicant or project sponsor. Responses become part of the application for approval or funding, are subject to public review, and may be subject to further verification.

Complete Part 1 based on information currently available. If additional research or investigation would be needed to fully respond to any item, please answer as thoroughly as possible based on current information; indicate whether missing information does not exist, or is not reasonably available to the sponsor; and, when possible, generally describe work or studies which would be necessary to update or fully develop that information.

Applicants/sponsors must complete all items in Sections A & B. In Sections C, D & E, most items contain an initial question that must be answered either “Yes” or “No”. If the answer to the initial question is “Yes”, complete the sub-questions that follow. If the answer to the initial question is “No”, proceed to the next question. Section F allows the project sponsor to identify and attach any additional information. Section G requires the name and signature of the project sponsor to verify that the information contained in Part 1 is accurate and complete.

A. Project and Sponsor Information.

Name of Action or Project: Proposed Multifamily Development and Office Building		
Project Location (describe, and attach a general location map):		Refer to Figures 1 and 2.
Tioronda Avenue (along Fishkill Creek), City of Beacon, Dutchess County, NY; Tax Parcels 5954-16-993482 & 6054-45-012574		
Brief Description of Proposed Action (include purpose or need): The Applicant, Chai Builders Corp., proposes the redevelopment of the northern portion of the former Tuck Industries manufacturing site with a 64-unit multifamily residential development and a 25,400 square foot (SF) office building, with associated parking. A Greenway Trail for public use is proposed along the Fishkill Creek. The 9.18-acre project site consists of two tax parcels identified as parcels 5954-16-993482 and 6054-45-012574 on the City of Beacon tax map. Access to the development is provided from Tioronda Avenue across the Metropolitan Transit Authority (MTA) property via easement. A second gated access for emergency and pedestrian use only is provided from Wolcott Avenue (NYS Route 9D). The proposed development is contained almost entirely within the former Tuck Industries development area. Please refer to site plan.		
Name of Applicant/Sponsor: Chai Builders (Berry Kahn)		Telephone: 917-696-4402
		E-Mail: berry@chaibuilders.com
Address: 120 Route 59 Suite 201		
City/PO: Suffern	State: NY	Zip Code: 10901
Project Contact (if not same as sponsor; give name and title/role): Same as Applicant		Telephone:
		E-Mail:
Address:		
City/PO:	State:	Zip Code:
Property Owner (if not same as sponsor): Beacon 248 Development, LLC		Telephone:
		E-Mail:
Address: 104 Rochelle Avenue		
City/PO: Rochelle Park	State: NJ	Zip Code: 07662

B. Government Approvals

B. Government Approvals, Funding, or Sponsorship. (“Funding” includes grants, loans, tax relief, and any other forms of financial assistance.)		
Government Entity	If Yes: Identify Agency and Approval(s) Required	Application Date (Actual or projected)
a. City Council, Town Board, or Village Board of Trustees <input checked="" type="checkbox"/> Yes <input type="checkbox"/> No	FCD Concept Plan Approval	Sep 2018
b. City, Town or Village Planning Board or Commission <input checked="" type="checkbox"/> Yes <input type="checkbox"/> No	Site Plan Approval; lot consolidation	Sep 2018
c. City Council, Town or Village Zoning Board of Appeals <input type="checkbox"/> Yes <input checked="" type="checkbox"/> No		
d. Other local agencies <input type="checkbox"/> Yes <input checked="" type="checkbox"/> No		
e. County agencies <input checked="" type="checkbox"/> Yes <input type="checkbox"/> No	DCDOH for water/sewer; DC Planning 239m referral	To be determined
f. Regional agencies <input type="checkbox"/> Yes <input checked="" type="checkbox"/> No		
g. State agencies <input checked="" type="checkbox"/> Yes <input type="checkbox"/> No	NYSDEC GP-0-15-002	To be determined
h. Federal agencies <input checked="" type="checkbox"/> Yes <input type="checkbox"/> No	Potential Nationwide Permit 14	To be determined
i. Coastal Resources.		
i. Is the project site within a Coastal Area, or the waterfront area of a Designated Inland Waterway? Refer to FEAF Narrative Section 2.3.		<input checked="" type="checkbox"/> Yes <input type="checkbox"/> No
ii. Is the project site located in a community with an approved Local Waterfront Revitalization Program?		<input checked="" type="checkbox"/> Yes <input type="checkbox"/> No
iii. Is the project site within a Coastal Erosion Hazard Area?		<input type="checkbox"/> Yes <input checked="" type="checkbox"/> No

C. Planning and Zoning

C.1. Planning and zoning actions.	
Will administrative or legislative adoption, or amendment of a plan, local law, ordinance, rule or regulation be the only approval(s) which must be granted to enable the proposed action to proceed?	<input type="checkbox"/> Yes <input checked="" type="checkbox"/> No
<ul style="list-style-type: none"> • If Yes, complete sections C, F and G. • If No, proceed to question C.2 and complete all remaining sections and questions in Part 1 	
C.2. Adopted land use plans.	
a. Do any municipally- adopted (city, town, village or county) comprehensive land use plan(s) include the site where the proposed action would be located? Refer to FEAF Narrative Section 2.2.	<input checked="" type="checkbox"/> Yes <input type="checkbox"/> No
If Yes, does the comprehensive plan include specific recommendations for the site where the proposed action would be located?	<input checked="" type="checkbox"/> Yes <input type="checkbox"/> No
b. Is the site of the proposed action within any local or regional special planning district (for example: Greenway Brownfield Opportunity Area (BOA); designated State or Federal heritage area; watershed management plan; or other?)	<input checked="" type="checkbox"/> Yes <input type="checkbox"/> No
If Yes, identify the plan(s): Remediation Sites:314044 , Remediation Sites:546031 (Refer to response to Question E.1.h.iv)	

c. Is the proposed action located wholly or partially within an area listed in an adopted municipal open space plan, or an adopted municipal farmland protection plan?	<input type="checkbox"/> Yes <input checked="" type="checkbox"/> No
If Yes, identify the plan(s):	

C.3. Zoning

a. Is the site of the proposed action located in a municipality with an adopted zoning law or ordinance. Yes No
If Yes, what is the zoning classification(s) including any applicable overlay district?
Fishkill Creek Development (FCD) District; refer to FEAF Narrative Section 2.3.

b. Is the use permitted or allowed by a special or conditional use permit? Yes No

c. Is a zoning change requested as part of the proposed action? Yes No
If Yes,
i. What is the proposed new zoning for the site? _____

C.4. Existing community services.

a. In what school district is the project site located? Beacon City School District

b. What police or other public protection forces serve the project site?
City of Beacon Police Department with support from Dutchess County Sheriff's Department and NYS Police

c. Which fire protection and emergency medical services serve the project site?
City of Beacon Fire District

d. What parks serve the project site?
Hudson Highlands State Park, Memorial Park, South Avenue Park

D. Project Details

D.1. Proposed and Potential Development

a. What is the general nature of the proposed action (e.g., residential, industrial, commercial, recreational; if mixed, include all components)? residential and commercial (office)

b. a. Total acreage of the site of the proposed action? 9.18 acres
b. Total acreage to be physically disturbed? 5.95 acres
c. Total acreage (project site and any contiguous properties) owned or controlled by the applicant or project sponsor? 9.18 acres

c. Is the proposed action an expansion of an existing project or use? Yes No
i. If Yes, what is the approximate percentage of the proposed expansion and identify the units (e.g., acres, miles, housing units, square feet)? % _____ Units: _____

d. Is the proposed action a subdivision, or does it include a subdivision? (lot consolidation) Yes No
If Yes,
i. Purpose or type of subdivision? (e.g., residential, industrial, commercial; if mixed, specify types)

ii. Is a cluster/conservation layout proposed? Yes No
iii. Number of lots proposed? _____
iv. Minimum and maximum proposed lot sizes? Minimum _____ Maximum _____

e. Will proposed action be constructed in multiple phases? Yes No
i. If No, anticipated period of construction: 24 months
ii. If Yes:
• Total number of phases anticipated _____
• Anticipated commencement date of phase 1 (including demolition) _____ month _____ year
• Anticipated completion date of final phase _____ month _____ year
• Generally describe connections or relationships among phases, including any contingencies where progress of one phase may determine timing or duration of future phases: _____

f. Does the project include new residential uses? Yes No
 If Yes, show numbers of units proposed.

	<u>One Family</u>	<u>Two Family</u>	<u>Three Family</u>	<u>Multiple Family (four or more)</u>
Initial Phase	_____	_____	_____	64
At completion of all phases	_____	_____	_____	64

g. Does the proposed action include new non-residential construction (including expansions)? Yes No
 If Yes,

i. Total number of structures 3 (2 residential buildings and an office building)
 ii. Dimensions (in feet) of largest proposed structure: 3 stories height; 100' width; and 100' length
 iii. Approximate extent of building space to be heated or cooled: 101,602 square feet

h. Does the proposed action include construction or other activities that will result in the impoundment of any liquids, such as creation of a water supply, reservoir, pond, lake, waste lagoon or other storage? Yes No
 If Yes,

i. Purpose of the impoundment: _____
 ii. If a water impoundment, the principal source of the water: Ground water Surface water streams Other specify: _____
 iii. If other than water, identify the type of impounded/contained liquids and their source. _____
 iv. Approximate size of the proposed impoundment. Volume: _____ million gallons; surface area: _____ acres
 v. Dimensions of the proposed dam or impounding structure: _____ height; _____ length
 vi. Construction method/materials for the proposed dam or impounding structure (e.g., earth fill, rock, wood, concrete): _____

D.2. Project Operations

a. Does the proposed action include any excavation, mining, or dredging, during construction, operations, or both? Yes No
 (Not including general site preparation, grading or installation of utilities or foundations where all excavated materials will remain onsite)
 If Yes:

i. What is the purpose of the excavation or dredging? _____
 ii. How much material (including rock, earth, sediments, etc.) is proposed to be removed from the site?
 • Volume (specify tons or cubic yards): _____
 • Over what duration of time? _____
 iii. Describe nature and characteristics of materials to be excavated or dredged, and plans to use, manage or dispose of them. _____

 iv. Will there be onsite dewatering or processing of excavated materials? Yes No
 If yes, describe. _____

 v. What is the total area to be dredged or excavated? _____ acres
 vi. What is the maximum area to be worked at any one time? _____ acres
 vii. What would be the maximum depth of excavation or dredging? _____ feet
 viii. Will the excavation require blasting? Yes No
 ix. Summarize site reclamation goals and plan: _____

b. Would the proposed action cause or result in alteration of, increase or decrease in size of, or encroachment into any existing wetland, waterbody, shoreline, beach or adjacent area? Yes No
 If Yes:

i. Identify the wetland or waterbody which would be affected (by name, water index number, wetland map number or geographic description): Tributary of Fishkill Creek, NYSDEC Stream H-95 (potential disturbance).

ii. Describe how the proposed action would affect that waterbody or wetland, e.g. excavation, fill, placement of structures, or alteration of channels, banks and shorelines. Indicate extent of activities, alterations and additions in square feet or acres:
 Access drive crosses tributary of Fishkill Creek.

iii. Will proposed action cause or result in disturbance to bottom sediments? Yes No
 If Yes, describe: _____

iv. Will proposed action cause or result in the destruction or removal of aquatic vegetation? Yes No
 If Yes:

- acres of aquatic vegetation proposed to be removed: _____
- expected acreage of aquatic vegetation remaining after project completion: _____
- purpose of proposed removal (e.g. beach clearing, invasive species control, boat access): _____
- proposed method of plant removal: _____
- if chemical/herbicide treatment will be used, specify product(s): _____

v. Describe any proposed reclamation/mitigation following disturbance: _____

NA

c. Will the proposed action use, or create a new demand for water? Refer to FEAF Narrative Section 5.1. Yes No
 If Yes:

i. Total anticipated water usage/demand per day: _____ 11,876 gallons/day

ii. Will the proposed action obtain water from an existing public water supply? Yes No
 If Yes:

- Name of district or service area: City of Beacon water district
- Does the existing public water supply have capacity to serve the proposal? Yes No
- Is the project site in the existing district? Yes No
- Is expansion of the district needed? Yes No
- Do existing lines serve the project site? Yes No

iii. Will line extension within an existing district be necessary to supply the project? Yes No
 If Yes:

- Describe extensions or capacity expansions proposed to serve this project: _____
- Source(s) of supply for the district: _____

iv. Is a new water supply district or service area proposed to be formed to serve the project site? Yes No
 If Yes:

- Applicant/sponsor for new district: _____
- Date application submitted or anticipated: _____
- Proposed source(s) of supply for new district: _____

v. If a public water supply will not be used, describe plans to provide water supply for the project: _____

vi. If water supply will be from wells (public or private), maximum pumping capacity: _____ gallons/minute.

d. Will the proposed action generate liquid wastes? Refer to FEAF Narrative Section 5.1. Yes No
 If Yes:

i. Total anticipated liquid waste generation per day: _____ 11,876 gallons/day

ii. Nature of liquid wastes to be generated (e.g., sanitary wastewater, industrial; if combination, describe all components and approximate volumes or proportions of each):
 sanitary sewage

iii. Will the proposed action use any existing public wastewater treatment facilities? Yes No
 If Yes:

- Name of wastewater treatment plant to be used: Beacon STP
- Name of district: City of Beacon
- Does the existing wastewater treatment plant have capacity to serve the project? Yes No
- Is the project site in the existing district? Yes No
- Is expansion of the district needed? Yes No

<ul style="list-style-type: none"> • Do existing sewer lines serve the project site? _____ • Will line extension within an existing district be necessary to serve the project? If Yes: <ul style="list-style-type: none"> • Describe extensions or capacity expansions proposed to serve this project: _____ 	<input checked="" type="checkbox"/> Yes <input type="checkbox"/> No <input type="checkbox"/> Yes <input checked="" type="checkbox"/> No
<p>iv. Will a new wastewater (sewage) treatment district be formed to serve the project site? If Yes:</p> <ul style="list-style-type: none"> • Applicant/sponsor for new district: _____ • Date application submitted or anticipated: _____ • What is the receiving water for the wastewater discharge? _____ <p>v. If public facilities will not be used, describe plans to provide wastewater treatment for the project, including specifying proposed receiving water (name and classification if surface discharge, or describe subsurface disposal plans):</p>	<input type="checkbox"/> Yes <input checked="" type="checkbox"/> No
<p>NA _____</p> <p>vi. Describe any plans or designs to capture, recycle or reuse liquid waste: _____</p> <p>NA _____</p>	
<p>e. Will the proposed action disturb more than one acre and create stormwater runoff, either from new point sources (i.e. ditches, pipes, swales, curbs, gutters or other concentrated flows of stormwater) or non-point source (i.e. sheet flow) during construction or post construction? Refer to FEAF Narrative Section 5.2. If Yes:</p> <p>i. How much impervious surface will the project create in relation to total size of project parcel? _____ Square feet or <u>3.08</u> acres (impervious surface) _____ Square feet or <u>9.18</u> acres (parcel size)</p> <p>ii. Describe types of new point sources. <u>To be determined</u></p> <p>iii. Where will the stormwater runoff be directed (i.e. on-site stormwater management facility/structures, adjacent properties, groundwater, on-site surface water or off-site surface waters)? <u>Stormwater management system which will discharge to Fishkill Creek</u></p> <ul style="list-style-type: none"> • If to surface waters, identify receiving water bodies or wetlands: _____ Fishkill Creek • Will stormwater runoff flow to adjacent properties? _____ 	<input checked="" type="checkbox"/> Yes <input type="checkbox"/> No <input type="checkbox"/> Yes <input checked="" type="checkbox"/> No <input type="checkbox"/> Yes <input checked="" type="checkbox"/> No
<p>iv. Does proposed plan minimize impervious surfaces, use pervious materials or collect and re-use stormwater?</p> <p>f. Does the proposed action include, or will it use on-site, one or more sources of air emissions, including fuel combustion, waste incineration, or other processes or operations? If Yes, identify:</p> <p>i. Mobile sources during project operations (e.g., heavy equipment, fleet or delivery vehicles)</p> <p>ii. Stationary sources during construction (e.g., power generation, structural heating, batch plant, crushers)</p> <p>iii. Stationary sources during operations (e.g., process emissions, large boilers, electric generation)</p>	<input type="checkbox"/> Yes <input checked="" type="checkbox"/> No <input type="checkbox"/> Yes <input checked="" type="checkbox"/> No <input type="checkbox"/> Yes <input checked="" type="checkbox"/> No
<p>g. Will any air emission sources named in D.2.f (above), require a NY State Air Registration, Air Facility Permit, or Federal Clean Air Act Title IV or Title V Permit? If Yes:</p> <p>i. Is the project site located in an Air quality non-attainment area? (Area routinely or periodically fails to meet ambient air quality standards for all or some parts of the year)</p> <p>ii. In addition to emissions as calculated in the application, the project will generate:</p> <ul style="list-style-type: none"> • _____ Tons/year (short tons) of Carbon Dioxide (CO₂) • _____ Tons/year (short tons) of Nitrous Oxide (N₂O) • _____ Tons/year (short tons) of Perfluorocarbons (PFCs) • _____ Tons/year (short tons) of Sulfur Hexafluoride (SF₆) • _____ Tons/year (short tons) of Carbon Dioxide equivalent of Hydroflouorocarbons (HFCs) • _____ Tons/year (short tons) of Hazardous Air Pollutants (HAPs) 	<input type="checkbox"/> Yes <input checked="" type="checkbox"/> No <input type="checkbox"/> Yes <input type="checkbox"/> No

h. Will the proposed action generate or emit methane (including, but not limited to, sewage treatment plants, landfills, composting facilities)? Yes No

If Yes:

i. Estimate methane generation in tons/year (metric): _____

ii. Describe any methane capture, control or elimination measures included in project design (e.g., combustion to generate heat or electricity, flaring): _____

i. Will the proposed action result in the release of air pollutants from open-air operations or processes, such as quarry or landfill operations? Yes No

If Yes: Describe operations and nature of emissions (e.g., diesel exhaust, rock particulates/dust): _____

j. Will the proposed action result in a substantial increase in traffic above present levels or generate substantial new demand for transportation facilities or services? Refer to FEAF Narrative Section 6.1. Yes No

If Yes:

i. When is the peak traffic expected (Check all that apply): Morning Evening Weekend
 Randomly between hours of _____ to _____.

ii. For commercial activities only, projected number of semi-trailer truck trips/day: _____

iii. Parking spaces: Existing _____ Proposed _____ Net increase/decrease _____

iv. Does the proposed action include any shared use parking? Yes No

v. If the proposed action includes any modification of existing roads, creation of new roads or change in existing access, describe: _____

vi. Are public/private transportation service(s) or facilities available within ½ mile of the proposed site? Yes No

vii. Will the proposed action include access to public transportation or accommodations for use of hybrid, electric or other alternative fueled vehicles? Yes No

viii. Will the proposed action include plans for pedestrian or bicycle accommodations for connections to existing pedestrian or bicycle routes? Yes No

k. Will the proposed action (for commercial or industrial projects only) generate new or additional demand for energy? Yes No

If Yes:

i. Estimate annual electricity demand during operation of the proposed action: _____

To be determined

ii. Anticipated sources/suppliers of electricity for the project (e.g., on-site combustion, on-site renewable, via grid/local utility, or other):
 Central Hudson Gas & Electric Corp. _____

iii. Will the proposed action require a new, or an upgrade to, an existing substation? Yes No

l. Hours of operation. Answer all items which apply.

<p>i. During Construction:</p> <ul style="list-style-type: none"> • Monday - Friday: _____ 7:00 am to 7:00 pm _____ • Saturday: _____ 7:00 am to 7:00 pm _____ • Sunday: _____ NA _____ • Holidays: _____ NA _____ 	<p>ii. During Operations: office building hours to be determined based on individual tenants</p> <ul style="list-style-type: none"> • Monday - Friday: _____ 24 hours (residential) _____ • Saturday: _____ 24 hours (residential) _____ • Sunday: _____ 24 hours (residential) _____ • Holidays: _____ 24 hours (residential) _____
--	--

m. Will the proposed action produce noise that will exceed existing ambient noise levels during construction, operation, or both? Yes No
 If yes:
 i. Provide details including sources, time of day and duration:
 Temporary noise from construction activities will be limited to the hours of 7:00 AM to 7:00 PM Monday to Saturday, and all motorized equipment used in construction will be operated with a muffler, in compliance with the City of Beacon Code Chapter 149, Noise, Section 149-6.F.

ii. Will proposed action remove existing natural barriers that could act as a noise barrier or screen? Yes No
 Describe: _____

n. Will the proposed action have outdoor lighting? Yes No
 If yes:
 i. Describe source(s), location(s), height of fixture(s), direction/aim, and proximity to nearest occupied structures:
 All exterior lighting will be of such type and location and will have such shading to prevent the source of light from being seen from any adjacent residential property or from the street in accordance with Section 223-14.B of the zoning regulations.

ii. Will proposed action remove existing natural barriers that could act as a light barrier or screen? Yes No
 Describe: _____

o. Does the proposed action have the potential to produce odors for more than one hour per day? Yes No
 If Yes, describe possible sources, potential frequency and duration of odor emissions, and proximity to nearest occupied structures: _____

p. Will the proposed action include any bulk storage of petroleum (combined capacity of over 1,100 gallons) or chemical products 185 gallons in above ground storage or any amount in underground storage? Yes No
 If Yes:
 i. Product(s) to be stored _____
 ii. Volume(s) _____ per unit time _____ (e.g., month, year)
 iii. Generally describe proposed storage facilities: _____

q. Will the proposed action (commercial, industrial and recreational projects only) use pesticides (i.e., herbicides, insecticides) during construction or operation? Yes No
 If Yes:
 i. Describe proposed treatment(s):

ii. Will the proposed action use Integrated Pest Management Practices? Yes No

r. Will the proposed action (commercial or industrial projects only) involve or require the management or disposal of solid waste (excluding hazardous materials)? [Refer to FEAF Narrative Section 8.0.](#) Yes No
 If Yes:
 i. Describe any solid waste(s) to be generated during construction or operation of the facility:
 • Construction: _____ NA tons per _____ NA (unit of time)
 • Operation : _____ 2 tons per _____ month (unit of time)
 ii. Describe any proposals for on-site minimization, recycling or reuse of materials to avoid disposal as solid waste:
 • Construction: NA

 • Operation: _____ Recyclable materials will be separated and hauled to the DC Resource Recovery Agency Facility in Poughkeepsie for recycling.

 iii. Proposed disposal methods/facilities for solid waste generated on-site:
 • Construction: NA

 • Operation: _____ Solid waste will be picked up regularly by a licensed solid waste hauler for disposal at the Dutchess County Resource Recovery Agency facility in Poughkeepsie.

s. Does the proposed action include construction or modification of a solid waste management facility? Yes No
 If Yes:
 i. Type of management or handling of waste proposed for the site (e.g., recycling or transfer station, composting, landfill, or other disposal activities): _____
 ii. Anticipated rate of disposal/processing:
 • _____ Tons/month, if transfer or other non-combustion/thermal treatment, or
 • _____ Tons/hour, if combustion or thermal treatment
 iii. If landfill, anticipated site life: _____ years

t. Will proposed action at the site involve the commercial generation, treatment, storage, or disposal of hazardous waste? Yes No
 If Yes:
 i. Name(s) of all hazardous wastes or constituents to be generated, handled or managed at facility: _____

 ii. Generally describe processes or activities involving hazardous wastes or constituents: _____

 iii. Specify amount to be handled or generated _____ tons/month
 iv. Describe any proposals for on-site minimization, recycling or reuse of hazardous constituents: _____

 v. Will any hazardous wastes be disposed at an existing offsite hazardous waste facility? Yes No
 If Yes: provide name and location of facility: _____

 If No: describe proposed management of any hazardous wastes which will not be sent to a hazardous waste facility:

E. Site and Setting of Proposed Action

E.1. Land uses on and surrounding the project site

a. Existing land uses.
 i. Check all uses that occur on, adjoining and near the project site. [Refer to Figure 3 and FEA Narrative Section 2.1.](#)
 Urban Industrial Commercial Residential (suburban) Rural (non-farm)
 Forest Agriculture Aquatic Other (specify): school, animal rescue facility
 ii. If mix of uses, generally describe:
 City of Beacon highway garage, public school, single family residences, two family residence, vacant residential land, animal rescue facility, vacant FCD property, MTA railroad property

b. Land uses and covertypes on the project site.

Land use or Covertypes	Current Acreage	Acreage After Project Completion	Change (Acres +/-)
• Roads, buildings, and other paved or impervious surfaces	2.30	3.08	+0.78
• Forested	3.5	2.75	-0.75
• Meadows, grasslands or brushlands (non-agricultural, including abandoned agricultural)	2.37	0	-2.37
• Agricultural (includes active orchards, field, greenhouse etc.)	0	0	
• Surface water features (lakes, ponds, streams, rivers, etc.)	0.31	0.31	0
• Wetlands (freshwater or tidal)	(1.81)*	(1.81)*	0
• Non-vegetated (bare rock, earth or fill)	0.70	0	-0.70
• Other Describe: <u>lawn/landscaped areas</u>	0	3.04	+3.04

* Wetland acreage overlaps with water surface area, forested, and meadow/brushland acreages.

c. Is the project site presently used by members of the community for public recreation? Yes No
i. If Yes: explain: _____

d. Are there any facilities serving children, the elderly, people with disabilities (e.g., schools, hospitals, licensed day care centers, or group homes) within 1500 feet of the project site? Yes No
If Yes,
i. Identify Facilities:
Beacon City School District public school across Tioronda Avenue from site

e. Does the project site contain an existing dam? Yes No
If Yes:
i. Dimensions of the dam and impoundment:
• Dam height: _____ feet
• Dam length: _____ feet
• Surface area: _____ acres
• Volume impounded: _____ gallons OR acre-feet
ii. Dam's existing hazard classification: _____
iii. Provide date and summarize results of last inspection:

f. Has the project site ever been used as a municipal, commercial or industrial solid waste management facility, or does the project site adjoin property which is now, or was at one time, used as a solid waste management facility? Yes No
If Yes:
i. Has the facility been formally closed? Yes No
• If yes, cite sources/documentation: _____
ii. Describe the location of the project site relative to the boundaries of the solid waste management facility:

iii. Describe any development constraints due to the prior solid waste activities: _____

g. Have hazardous wastes been generated, treated and/or disposed of at the site, or does the project site adjoin property which is now or was at one time used to commercially treat, store and/or dispose of hazardous waste? Yes No
If Yes:
i. Describe waste(s) handled and waste management activities, including approximate time when activities occurred:
NYSDEC Remediation Site Code 314044. Refer to FEAR Narrative Section 9.0.

h. Potential contamination history. Has there been a reported spill at the proposed project site, or have any remedial actions been conducted at or adjacent to the proposed site? Yes No
If Yes:
i. Is any portion of the site listed on the NYSDEC Spills Incidents database or Environmental Site Remediation database? Check all that apply: Yes No
 Yes – Spills Incidents database Provide DEC ID number(s): _____
 Yes – Environmental Site Remediation database Provide DEC ID number(s): 314044 , 546031
 Neither database
ii. If site has been subject of RCRA corrective activities, describe control measures: _____
NA _____
iii. Is the project within 2000 feet of any site in the NYSDEC Environmental Site Remediation database? Yes No
If yes, provide DEC ID number(s): C314117, 314044 , C314118, 546031
iv. If yes to (i), (ii) or (iii) above, describe current status of site(s): _____

Refer to FEAR Narrative Section 9.0 for information on Site Code 314044. C314117: Beacon Terminal = Classification A; 546031: Hudson River PCB Contamination = Classification O2; C314118: Churchill Mills = Classification N

v. Is the project site subject to an institutional control limiting property uses? Yes No

- If yes, DEC site ID number: _____
- Describe the type of institutional control (e.g., deed restriction or easement): _____
- Describe any use limitations: _____
- Describe any engineering controls: _____
- Will the project affect the institutional or engineering controls in place? Yes No
- Explain: _____

E.2. Natural Resources On or Near Project Site Refer to Figure 4 and FEAF Narrative Section 4.1.

a. What is the average depth to bedrock on the project site? _____ >5 feet

b. Are there bedrock outcroppings on the project site? Yes No
If Yes, what proportion of the site is comprised of bedrock outcroppings? _____ %

c. Predominant soil type(s) present on project site:

Udorthents, smoothed	_____	100 %
_____	_____	_____ %
_____	_____	_____ %

d. What is the average depth to the water table on the project site? Average: _____ >3 feet

e. Drainage status of project site soils:

<input checked="" type="checkbox"/> Well Drained:	_____	45 % of site
<input checked="" type="checkbox"/> Moderately Well Drained:	_____	45 % of site
<input checked="" type="checkbox"/> Poorly Drained	_____	10 % of site

f. Approximate proportion of proposed action site with slopes: 0-10%: _____ 15 % of site
Refer to Figure 5. 10-15%: _____ 40 % of site
 15% or greater: _____ 45 % of site

g. Are there any unique geologic features on the project site? Yes No
If Yes, describe: _____

h. Surface water features.

i. Does any portion of the project site contain wetlands or other waterbodies (including streams, rivers, ponds or lakes)? Refer to Figure 5 and FEAF Narrative Section 4.2. Yes No

ii. Do any wetlands or other waterbodies adjoin the project site? Yes No
If Yes to either *i* or *ii*, continue. If No, skip to E.2.i.

iii. Are any of the wetlands or waterbodies within or adjoining the project site regulated by any federal, state or local agency? Yes No

iv. For each identified regulated wetland and waterbody on the project site, provide the following information:

- Streams: Name Fishkill Creek (NYSDEC Stream H-95) Classification _____
- Lakes or Ponds: Name NA Classification _____
- Wetlands: Name Federal Waters, Federal Waters (NWI wetlands along creek) Approximate Size 1.8 acres within site
- Wetland No. (if regulated by DEC) NA

v. Are any of the above water bodies listed in the most recent compilation of NYS water quality-impaired waterbodies? Yes No
If yes, name of impaired water body/bodies and basis for listing as impaired: _____

i. Is the project site in a designated Floodway? Refer to Figure 6 and FEAF Narrative Section 4.3. Yes No

j. Is the project site in the 100 year Floodplain? Yes No

k. Is the project site in the 500 year Floodplain? Yes No

l. Is the project site located over, or immediately adjoining, a primary, principal or sole source aquifer? Yes No
If Yes:

i. Name of aquifer: Principal Aquifer

<p>m. Identify the predominant wildlife species that occupy or use the project site: _____ Common urban species _____ Refer to FEAF Narrative Section 10.0. _____</p>	
<p>n. Does the project site contain a designated significant natural community? <input type="checkbox"/> Yes <input checked="" type="checkbox"/> No If Yes: i. Describe the habitat/community (composition, function, and basis for designation): _____ ii. Source(s) of description or evaluation: _____ iii. Extent of community/habitat: • Currently: _____ acres • Following completion of project as proposed: _____ acres • Gain or loss (indicate + or -): _____ acres</p>	
<p>o. Does project site contain any species of plant or animal that is listed by the federal government or NYS as endangered or threatened, or does it contain any areas identified as habitat for an endangered or threatened species? <input type="checkbox"/> Yes <input checked="" type="checkbox"/> No Refer to Figure 7 and FEAF Narrative Section 10.0.</p>	
<p>p. Does the project site contain any species of plant or animal that is listed by NYS as rare, or as a species of special concern? <input type="checkbox"/> Yes <input checked="" type="checkbox"/> No</p>	
<p>q. Is the project site or adjoining area currently used for hunting, trapping, fishing or shell fishing? <input type="checkbox"/> Yes <input checked="" type="checkbox"/> No If yes, give a brief description of how the proposed action may affect that use: _____ _____</p>	
E.3. Designated Public Resources On or Near Project Site	
<p>a. Is the project site, or any portion of it, located in a designated agricultural district certified pursuant to Agriculture and Markets Law, Article 25-AA, Section 303 and 304? <input type="checkbox"/> Yes <input checked="" type="checkbox"/> No If Yes, provide county plus district name/number: _____</p>	
<p>b. Are agricultural lands consisting of highly productive soils present? <input type="checkbox"/> Yes <input checked="" type="checkbox"/> No i. If Yes: acreage(s) on project site? _____ ii. Source(s) of soil rating(s): _____</p>	
<p>c. Does the project site contain all or part of, or is it substantially contiguous to, a registered National Natural Landmark? <input type="checkbox"/> Yes <input checked="" type="checkbox"/> No If Yes: i. Nature of the natural landmark: <input type="checkbox"/> Biological Community <input type="checkbox"/> Geological Feature ii. Provide brief description of landmark, including values behind designation and approximate size/extent: _____ _____ _____</p>	
<p>d. Is the project site located in or does it adjoin a state listed Critical Environmental Area? <input type="checkbox"/> Yes <input checked="" type="checkbox"/> No If Yes: i. CEA name: _____ ii. Basis for designation: _____ iii. Designating agency and date: _____</p>	

e. Does the project site contain, or is it substantially contiguous to, a building, archaeological site, or district which is listed on, or has been nominated by the NYS Board of Historic Preservation for inclusion on, the State or National Register of Historic Places? Refer to Figure 8 and FEA Narrative Section 11.0.	<input checked="" type="checkbox"/> Yes <input type="checkbox"/> No
If Yes: i. Nature of historic/archaeological resource: <input type="checkbox"/> Archaeological Site <input type="checkbox"/> Historic Building or District ii. Name: <u>St. Luke's Episcopal Church Complex</u>	
iii. Brief description of attributes on which listing is based: _____	
f. Is the project site, or any portion of it, located in or adjacent to an area designated as sensitive for archaeological sites on the NY State Historic Preservation Office (SHPO) archaeological site inventory? Refer to Figure 8 and FEA Narrative Section 11.0.	<input checked="" type="checkbox"/> Yes <input type="checkbox"/> No
g. Have additional archaeological or historic site(s) or resources been identified on the project site? If Yes: i. Describe possible resource(s): _____ ii. Basis for identification: _____	
h. Is the project site within five miles of any officially designated and publicly accessible federal, state, or local scenic or aesthetic resource? Refer to Figure 9.	<input checked="" type="checkbox"/> Yes <input type="checkbox"/> No
If Yes: i. Identify resource: <u>Refer to Figure 9.</u> ii. Nature of, or basis for, designation (e.g., established highway overlook, state or local park, state historic trail or scenic byway, etc.): <u>SASS, NYSDEC trails, NYS Scenic Byway; Federal, State, County, and municipal recreation, State Park scenic trails</u> iii. Distance between project and resource: <u>Wolcott Ave Bridge</u> miles.	
i. Is the project site located within a designated river corridor under the Wild, Scenic and Recreational Rivers Program 6 NYCRR 666?	<input type="checkbox"/> Yes <input checked="" type="checkbox"/> No
If Yes: i. Identify the name of the river and its designation: _____ ii. Is the activity consistent with development restrictions contained in 6NYCRR Part 666?	
<div style="text-align: right;"><input type="checkbox"/> Yes <input type="checkbox"/> No</div>	

F. Additional Information

Attach any additional information which may be needed to clarify your project.

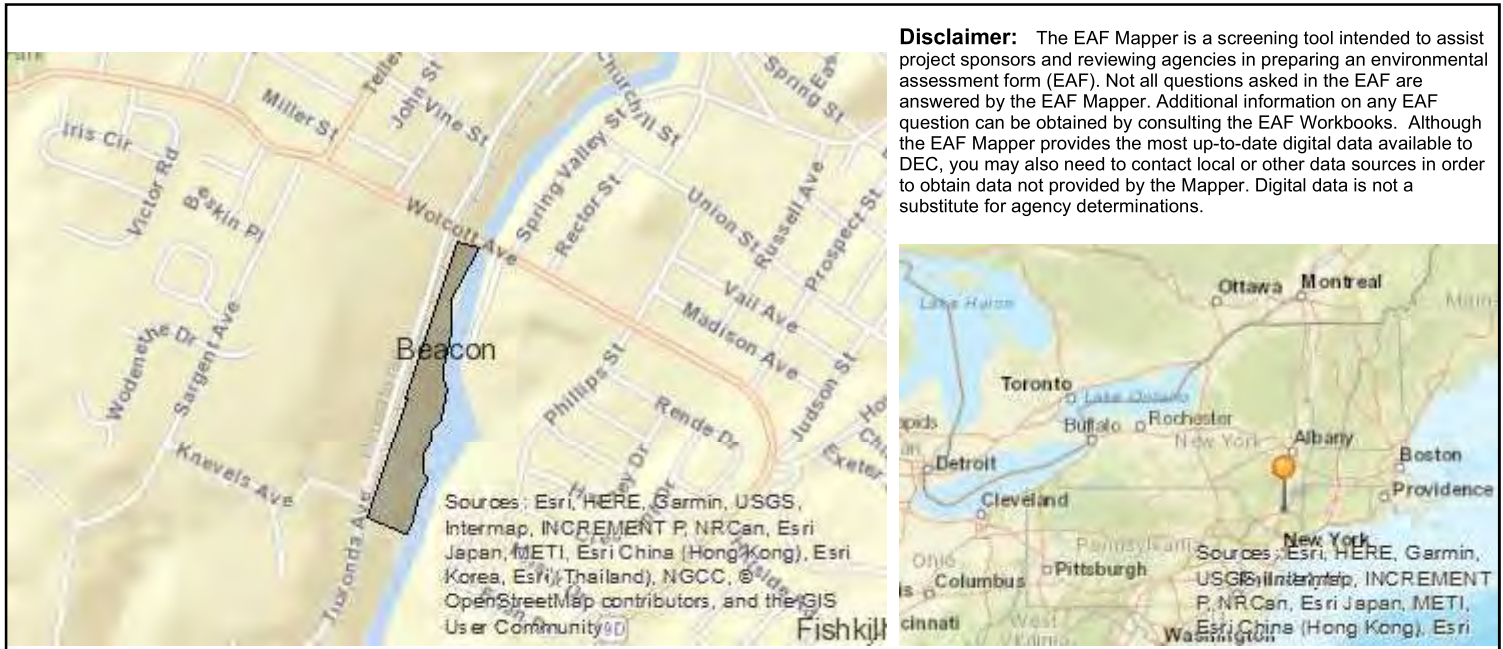
If you have identified any adverse impacts which could be associated with your proposal, please describe those impacts plus any measures which you propose to avoid or minimize them.

G. Verification

I certify that the information provided is true to the best of my knowledge.

Applicant/Sponsor Name Chai Builders Corp. Date Sep 10, 2018; Reissued Oct 15, 2018

Signature  Title Planner



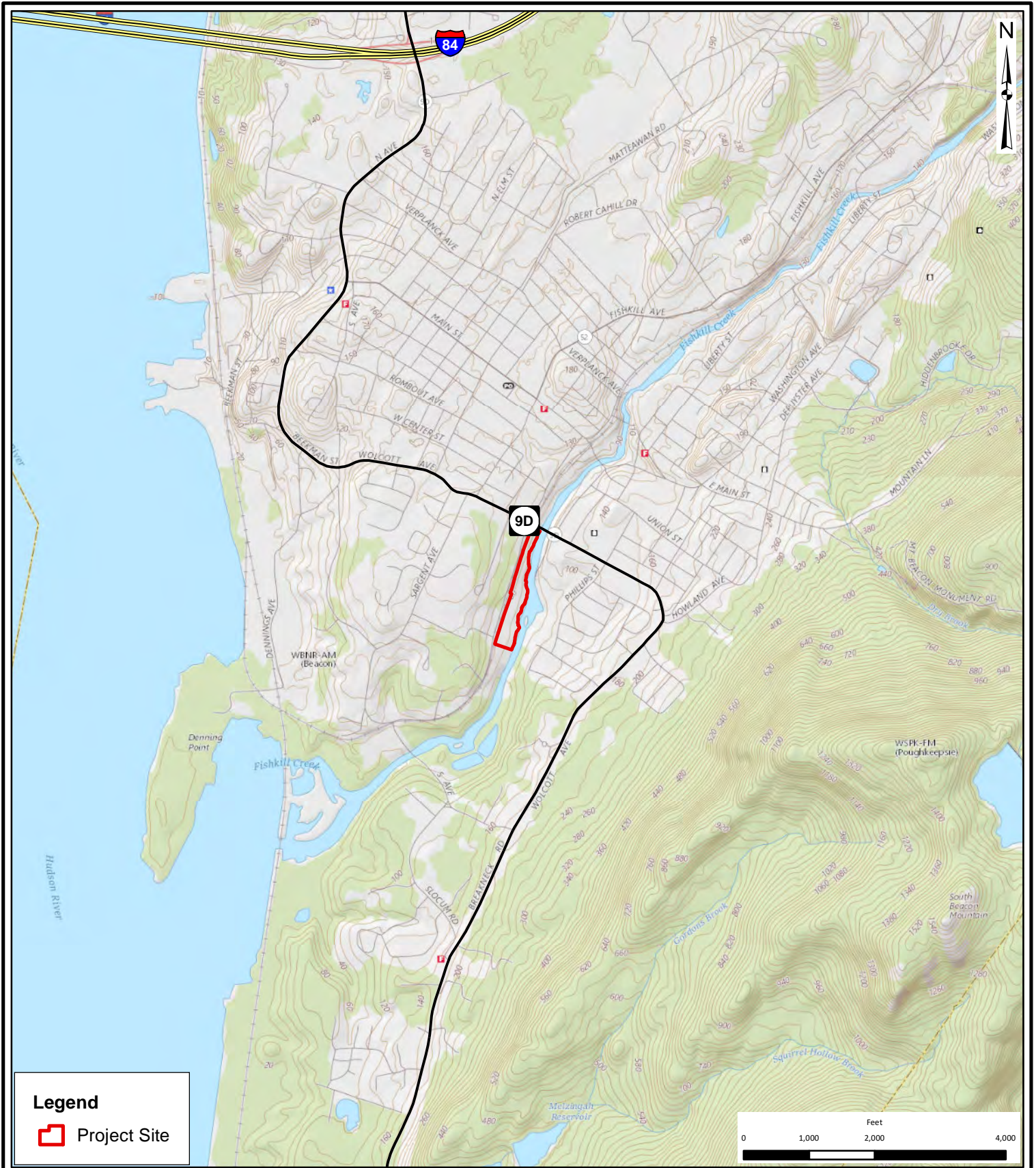
B.i.i [Coastal or Waterfront Area]	Yes
B.i.ii [Local Waterfront Revitalization Area]	Yes
C.2.b. [Special Planning District]	Yes - Digital mapping data are not available for all Special Planning Districts. Refer to EAF Workbook.
C.2.b. [Special Planning District - Name]	Remediaton Sites:314044 , Remediaton Sites:546031
E.1.h [DEC Spills or Remediation Site - Potential Contamination History]	Yes - Digital mapping data for Spills Incidents are not available for this location. Refer to EAF Workbook.
E.1.h.i [DEC Spills or Remediation Site - Listed]	Yes
E.1.h.i [DEC Spills or Remediation Site - Environmental Site Remediation Database]	Yes
E.1.h.i [DEC Spills or Remediation Site - DEC ID Number]	314044 , 546031
E.1.h.iii [Within 2,000' of DEC Remediation Site]	Yes
E.1.h.iii [Within 2,000' of DEC Remediation Site - DEC ID]	C314117, 314044 , C314118, 546031
E.2.g [Unique Geologic Features]	No
E.2.h.i [Surface Water Features]	Yes
E.2.h.ii [Surface Water Features]	Yes
E.2.h.iii [Surface Water Features]	Yes - Digital mapping information on local and federal wetlands and waterbodies is known to be incomplete. Refer to EAF Workbook.
E.2.h.iv [Surface Water Features - Wetlands Name]	Federal Waters
E.2.h.v [Impaired Water Bodies]	No
E.2.i. [Floodway]	Yes
E.2.j. [100 Year Floodplain]	Yes

E.2.k. [500 Year Floodplain]	Yes
E.2.l. [Aquifers]	Yes
E.2.l. [Aquifer Names]	Principal Aquifer
E.2.n. [Natural Communities]	No
E.2.o. [Endangered or Threatened Species]	No
E.2.p. [Rare Plants or Animals]	No
E.3.a. [Agricultural District]	No
E.3.c. [National Natural Landmark]	No
E.3.d [Critical Environmental Area]	No
E.3.e. [National Register of Historic Places]	Yes - Digital mapping data for archaeological site boundaries are not available. Refer to EAF Workbook.
E.3.e.ii [National Register of Historic Places - Name]	St. Luke's Episcopal Church Complex
E.3.f. [Archeological Sites]	Yes
E.3.i. [Designated River Corridor]	No

This page intentionally left blank

FIGURES

This page intentionally left blank



THE Chazen COMPANIES
ENGINEERS
 LAND SURVEYORS
 PLANNERS
 ENVIRONMENTAL & SAFETY PROFESSIONALS
 LANDSCAPE ARCHITECTS

Dutchess County Office:
 21 Fox Street, Poughkeepsie, NY 12601
 Phone: (845) 454-3980

Capital District Office:
 547 River Street, Troy, NY 12180
 Phone: (518) 273-0055

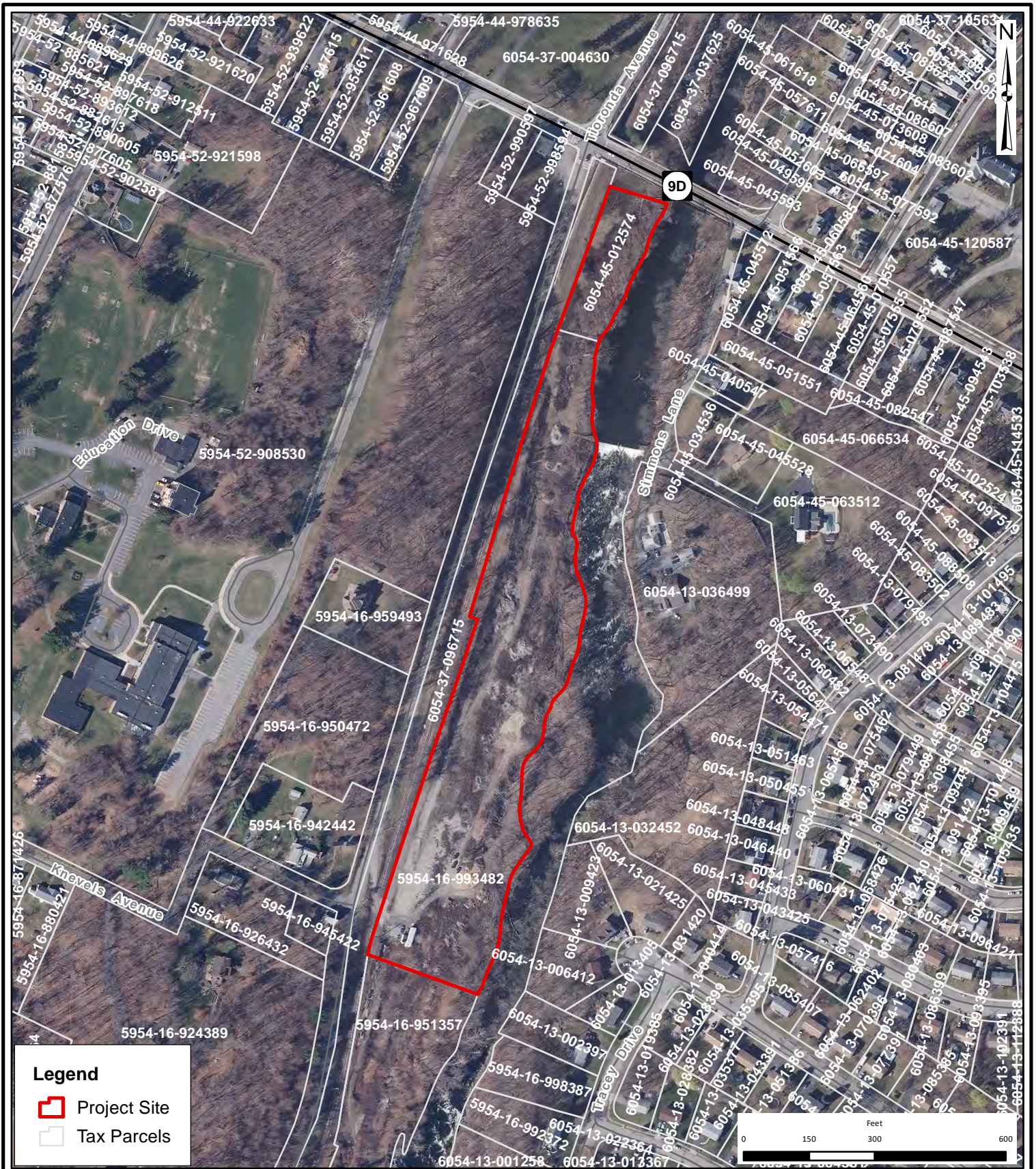
North Country Office:
 375 Bay Road, Queensbury, NY 12804
 Phone: (518) 812-0513

Proposed Fishkill Creek Development (FCD) Site Plan

USGS Location Map

Tioronda Avenue, City of Beacon - Dutchess County, NY

Drawn:	RLB
Date:	09/06/2018
Scale:	1 in = 2,000 feet
Project:	81750.00
Figure:	1



Legend

- ▭ Project Site
- Tax Parcels

THE Chazen COMPANIES

ENGINEERS
LAND SURVEYORS
PLANNERS
ENVIRONMENTAL & SAFETY PROFESSIONALS
LANDSCAPE ARCHITECTS

Dutchess County Office:
21 Fox Street, Poughkeepsie, NY 12601
Phone: (845) 454-3980

Capital District Office:
547 River Street, Troy, NY 12180
Phone: (518) 273-0055

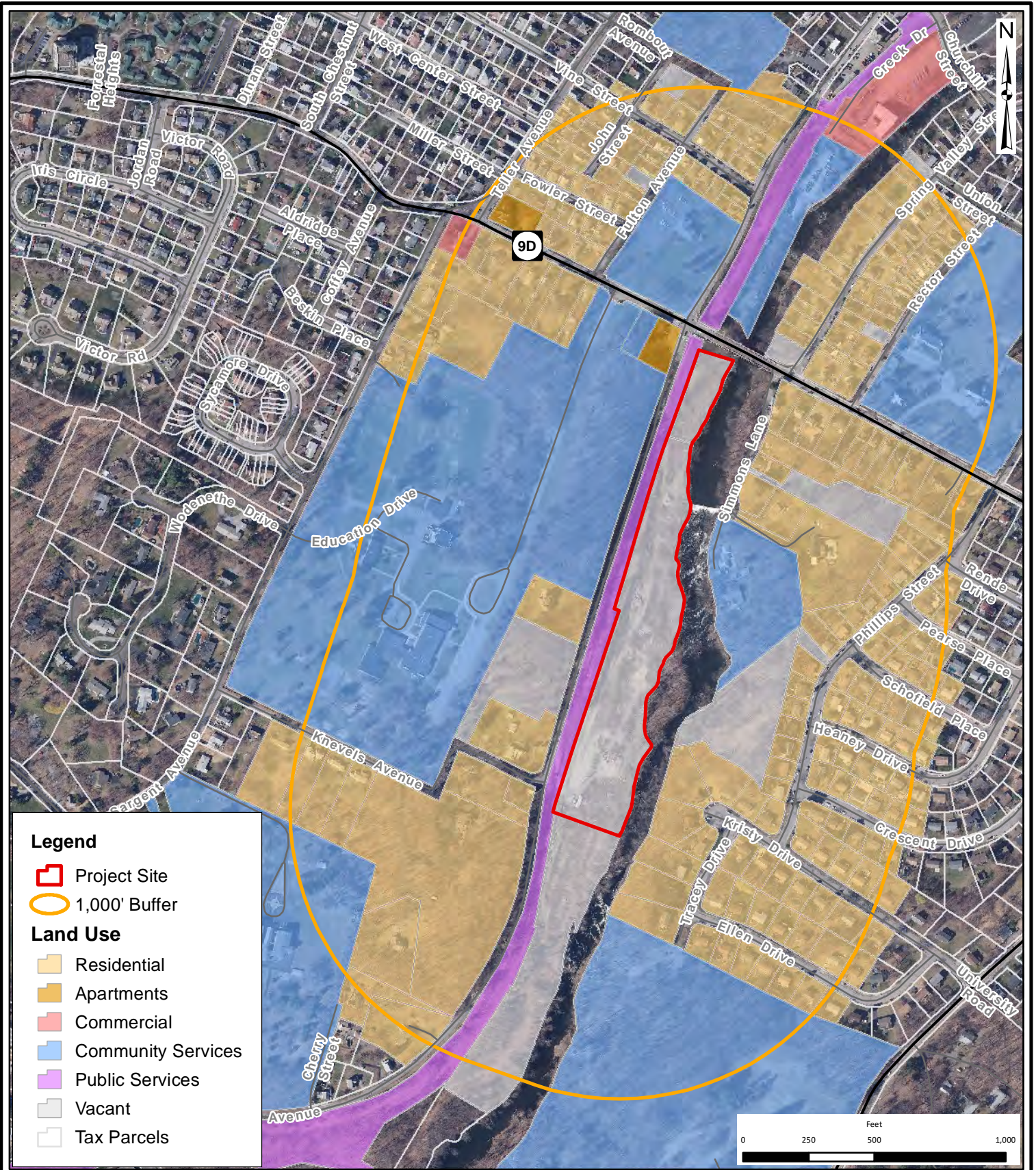
North Country Office:
375 Bay Road, Queensbury, NY 12804
Phone: (518) 812-0513

Proposed Fishkill Creek Development (FCD) Site Plan

Orthophoto Tax Map

Tioronda Avenue, City of Beacon - Dutchess County, NY

Drawn:	RLB
Date:	09/06/2018
Scale:	1 in = 300 feet
Project:	81750.00
Figure:	2



Legend

- Project Site
- 1,000' Buffer

Land Use

- Residential
- Apartments
- Commercial
- Community Services
- Public Services
- Vacant
- Tax Parcels

THE Chazen COMPANIES
ENGINEERS
 LAND SURVEYORS
 PLANNERS
 ENVIRONMENTAL & SAFETY PROFESSIONALS
 LANDSCAPE ARCHITECTS

Dutchess County Office:
 21 Fox Street, Poughkeepsie, NY 12601
 Phone: (845) 454-3980

Capital District Office:
 547 River Street, Troy, NY 12180
 Phone: (518) 273-0055

North Country Office:
 375 Bay Road, Queensbury, NY 12804
 Phone: (518) 812-0513

Proposed Fishkill Creek Development (FCD) Site Plan

Land Use Map

Tioronda Avenue, City of Beacon - Dutchess County, NY

Drawn:	RLB
Date:	09/06/2018
Scale:	1 in = 500 feet
Project:	81750.00
Figure:	3



Legend

- Project Site
- Site Soils**
- Ud:Udorthents, smoothed
- W:Water
- Tax Parcels

THE Chazen COMPANIES
ENGINEERS
 LAND SURVEYORS
 PLANNERS
 ENVIRONMENTAL & SAFETY PROFESSIONALS
 LANDSCAPE ARCHITECTS

Dutchess County Office:
 21 Fox Street, Poughkeepsie, NY 12601
 Phone: (845) 454-3980

Capital District Office:
 547 River Street, Troy, NY 12180
 Phone: (518) 273-0055

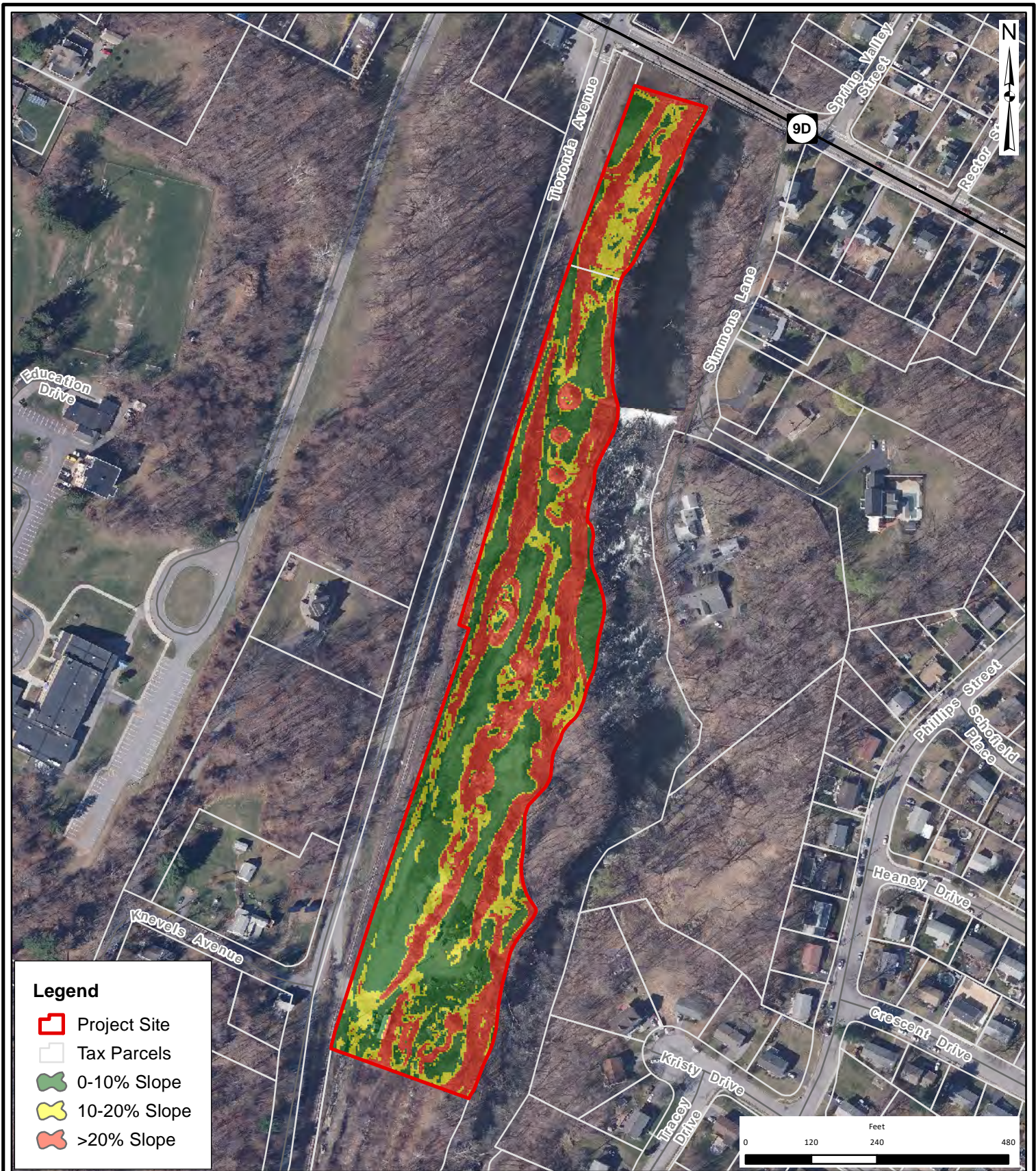
North Country Office:
 375 Bay Road, Queensbury, NY 12804
 Phone: (518) 812-0513

Proposed Fishkill Creek Development (FCD) Site Plan

Soils Map

Tioronda Avenue, City of Beacon - Dutchess County, NY

Drawn:	RLB
Date:	09/06/2018
Scale:	1 in = 300 feet
Project:	81750.00
Figure:	4



Legend

- Project Site
- Tax Parcels
- 0-10% Slope
- 10-20% Slope
- >20% Slope

THE Chazen COMPANIES
ENGINEERS
 LAND SURVEYORS
 PLANNERS
 ENVIRONMENTAL & SAFETY PROFESSIONALS
 LANDSCAPE ARCHITECTS

Dutchess County Office:
 21 Fox Street, Poughkeepsie, NY 12601
 Phone: (845) 454-3980

Capital District Office:
 547 River Street, Troy, NY 12180
 Phone: (518) 273-0055

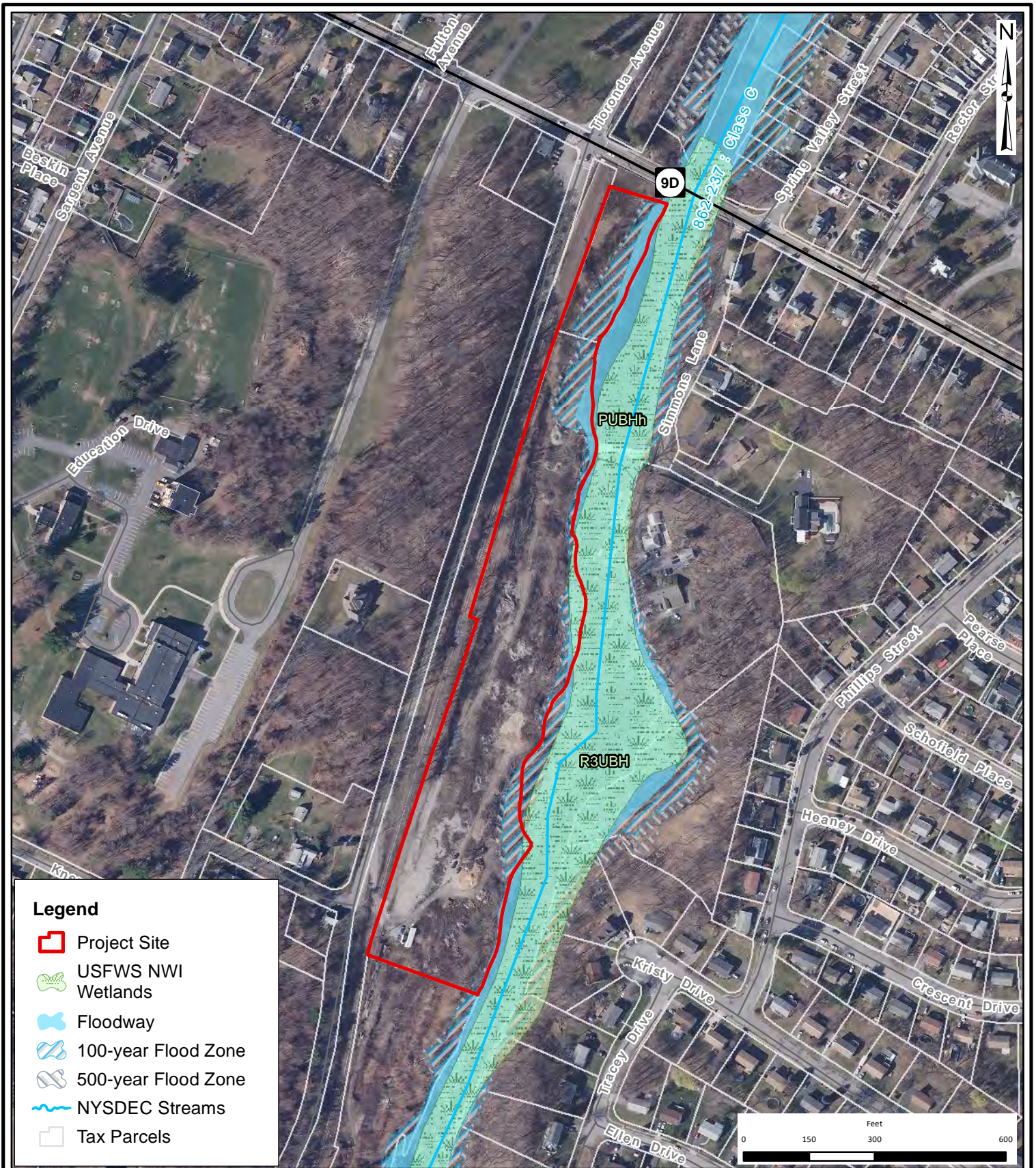
North Country Office:
 375 Bay Road, Queensbury, NY 12804
 Phone: (518) 812-0513

Proposed Fishkill Creek Development (FCD) Site Plan

Slopes Map

Tioronda Avenue, City of Beacon - Dutchess County, NY

Drawn:	RLB
Date:	09/06/2018
Scale:	1 in = 240 feet
Project:	81750.00
Figure:	5



Legend

- Project Site
- USFWS NWI Wetlands
- Floodway
- 100-year Flood Zone
- 500-year Flood Zone
- NYSDEC Streams
- Tax Parcels

Proposed Fishkill Creek Development (FCD) Site Plan

Wetland, Streams and Floodplain Map

Tioronda Avenue, City of Beacon - Dutchess County, NY

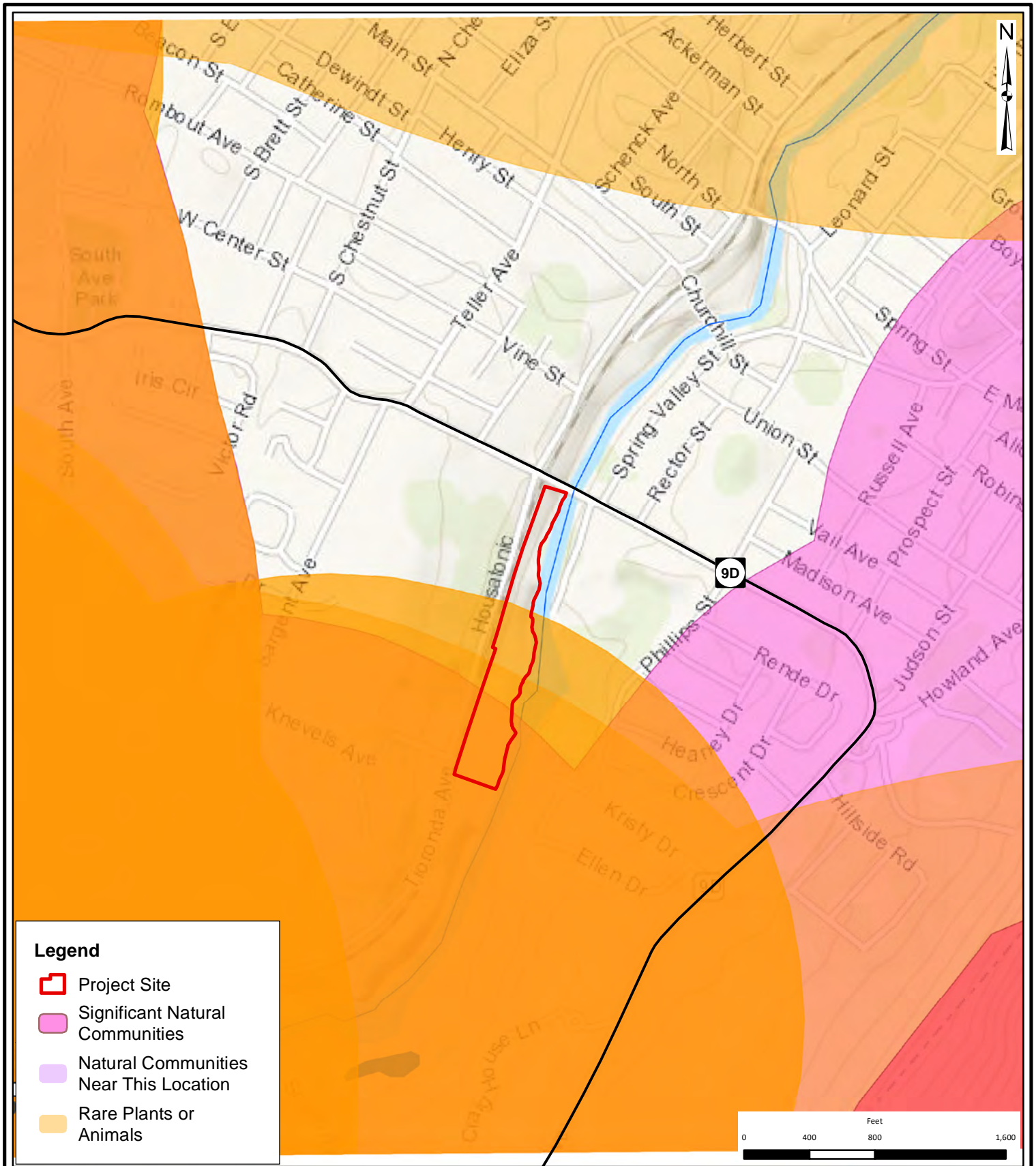
Drawn:	RLB
Date:	09/06/2018
Scale:	1 in = 300 feet
Project:	81750.00
Figure:	6

THE Chazen COMPANIES
ENGINEERS
 LAND SURVEYORS
 PLANNERS
 ENVIRONMENTAL & SAFETY PROFESSIONALS
 LANDSCAPE ARCHITECTS

Dutchess County Office:
 21 Fox Street, Poughkeepsie, NY 12601
 Phone: (845) 454-3980

Capital District Office:
 547 River Street, Troy, NY 12180
 Phone: (518) 273-0055

North Country Office:
 375 Bay Road, Queensbury, NY 12804
 Phone: (518) 812-0513



Legend

- Project Site
- Significant Natural Communities
- Natural Communities Near This Location
- Rare Plants or Animals

THE Chazen COMPANIES
ENGINEERS
 LAND SURVEYORS
 PLANNERS
 ENVIRONMENTAL & SAFETY PROFESSIONALS
 LANDSCAPE ARCHITECTS

Dutchess County Office:
 21 Fox Street, Poughkeepsie, NY 12601
 Phone: (845) 454-3980

Capital District Office:
 547 River Street, Troy, NY 12180
 Phone: (518) 273-0055

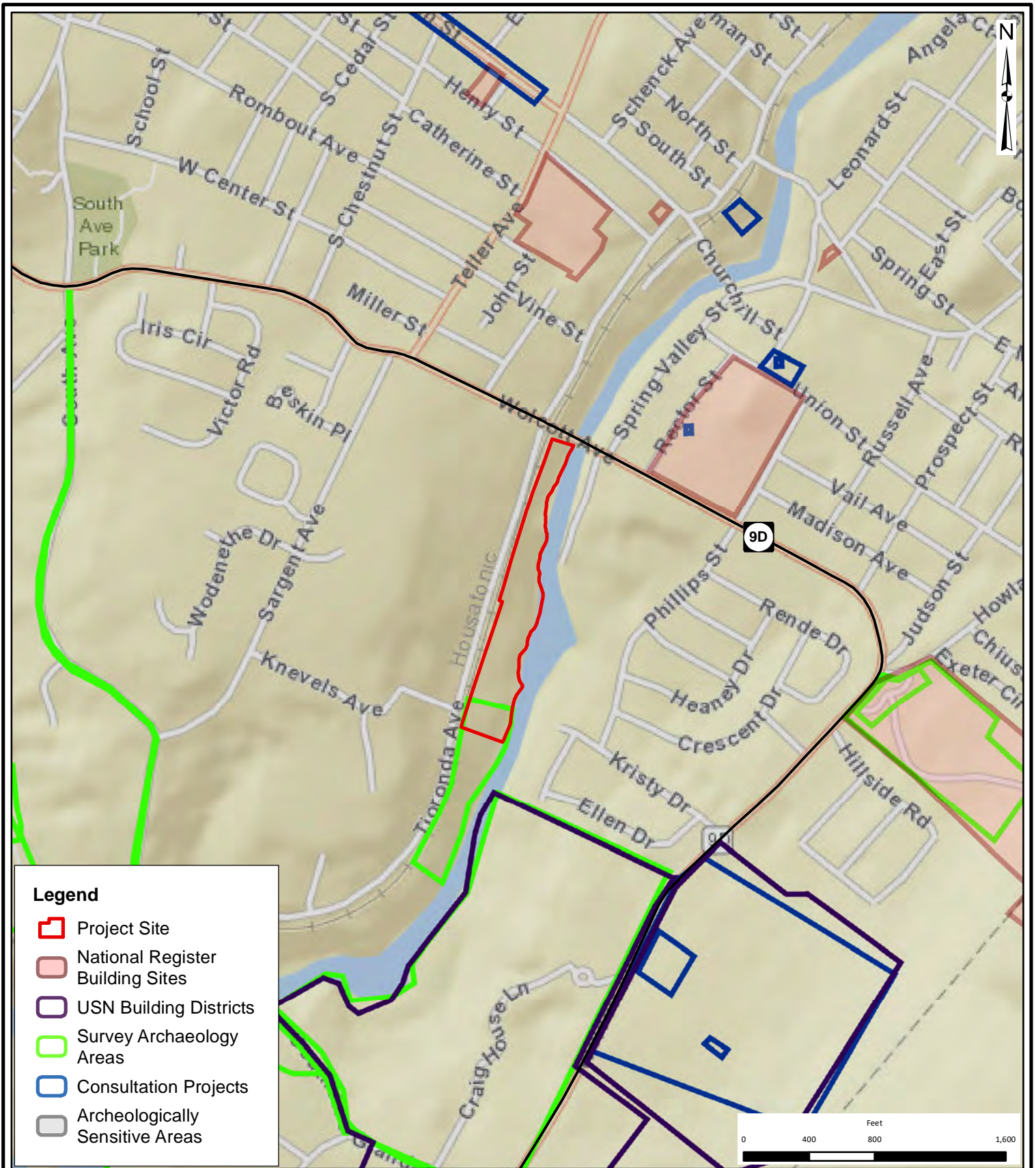
North Country Office:
 375 Bay Road, Queensbury, NY 12804
 Phone: (518) 812-0513

Proposed Fishkill Creek Development (FCD) Site Plan

NYSDEC Environmental Resource Map

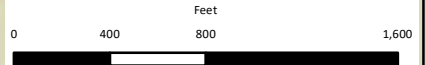
Tioronda Avenue, City of Beacon - Dutchess County, NY

Drawn:	RLB
Date:	09/07/2018
Scale:	1 in = 800 feet
Project:	81750.00
Figure:	7



Legend

- Project Site
- National Register Building Sites
- USN Building Districts
- Survey Archaeology Areas
- Consultation Projects
- Archeologically Sensitive Areas



THE Chazen COMPANIES
ENGINEERS
 LAND SURVEYORS
 PLANNERS
 ENVIRONMENTAL & SAFETY PROFESSIONALS
 LANDSCAPE ARCHITECTS

Dutchess County Office:
 21 Fox Street, Poughkeepsie, NY 12601
 Phone: (845) 454-3980

Capital District Office:
 547 River Street, Troy, NY 12180
 Phone: (518) 273-0055

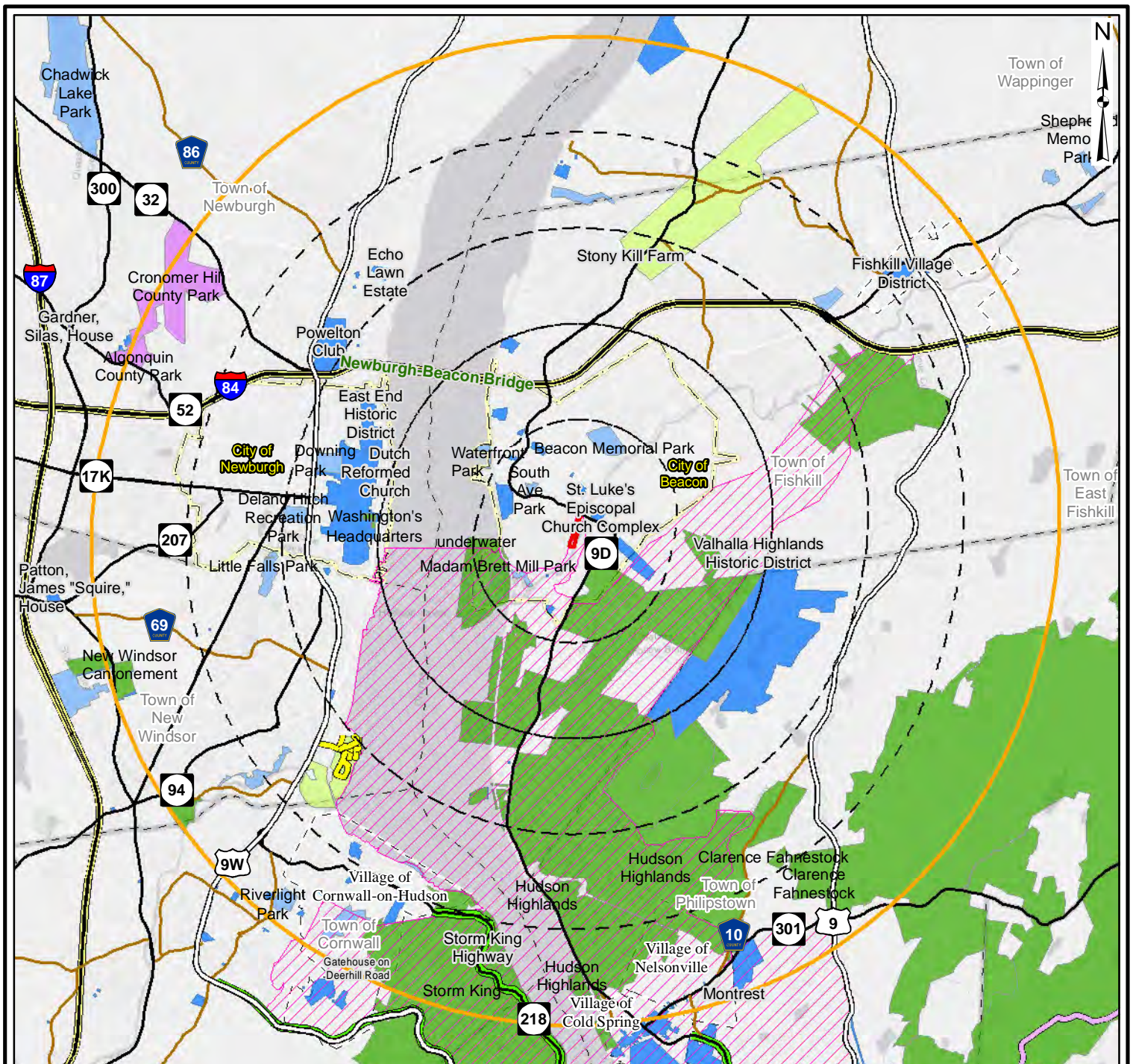
North Country Office:
 375 Bay Road, Queensbury, NY 12804
 Phone: (518) 812-0513

Proposed Fishkill Creek Development (FCD) Site Plan

NYSOPRHP Cultural Resource Information System (CRIS)

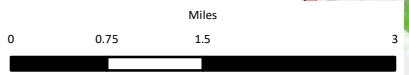
Tioronda Avenue, City of Beacon - Dutchess County, NY

Drawn:	RLB
Date:	09/07/2018
Scale:	1 in = 800 feet
Project:	81750.00
Figure:	8



Legend

- 5-mile Buffer
- 1-mile Buffers
- Project Site
- NYS scenic byways
- Scenic Trails
- DEC Trails
- Scenic Areas of Statewide Significance
- Municipal Recreation
- County Recreation
- Federal Recreation
- State Parks And Historic Sites
- State Recreation
- State And National Register Listed



THE Chazen COMPANIES
 ENGINEERS
 LAND SURVEYORS
 PLANNERS
 ENVIRONMENTAL & SAFETY PROFESSIONALS
 LANDSCAPE ARCHITECTS

Dutchess County Office:
 21 Fox Street, Poughkeepsie, NY 12601
 Phone: (845) 454-3980

Capital District Office:
 547 River Street, Troy, NY 12180
 Phone: (518) 273-0055

North Country Office:
 375 Bay Road, Queensbury, NY 12804
 Phone: (518) 812-0513

Proposed Fishkill Creek Development (FCD) Site Plan

**Publicly Accessible
 Federal, State, or Local Scenic or Aesthetic
 Resources within 5 Miles**

Tioronda Avenue, City of Beacon - Dutchess County, NY

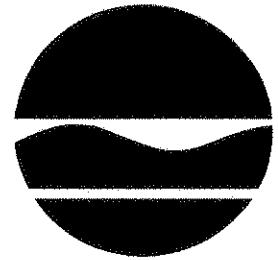
Drawn:	RL-B
Date:	09/07/2018
Scale:	1 in = 1.5 miles
Project:	81750.00
Figure:	9

This page intentionally left blank

**ATTACHMENT A
NYSDEC Correspondence and
USFWS IPaC Resources List**

This page intentionally left blank

NEW YORK STATE DEPARTMENT OF ENVIRONMENTAL CONSERVATION
Division of Fish, Wildlife & Marine Resources
New York Natural Heritage Program
625 Broadway, 5th Floor, Albany, New York 12233-4757
Phone: (518) 402-8935 • **Fax:** (518) 402-8925
Website: www.dec.ny.gov



Joe Martens
Commissioner

July 24, 2013

Barbara B. Beall, PWS, LEED AP
The Chazen Companies
375 Bay Road
North Country Office
Queensbury, NY 12804

Re: Beacon 248 Development LLC Site (TCC Job #31104.06)
Town/City: CITY OF BEACON. County: DUTCHESS.

Dear Barbara B. Beall, PWS, LEED AP :

In response to your recent request, we have reviewed the New York Natural Heritage Program database with respect to the above project

Enclosed is a report of rare or state-listed animals and plants, and significant natural communities, which our databases indicate occur, or may occur, on your site or in the immediate vicinity of your site.

For most sites, comprehensive field surveys have not been conducted; the enclosed report only includes records from our databases. We cannot provide a definitive statement as to the presence or absence of all rare or state-listed species or significant natural communities. This information should not be substituted for on-site surveys that may be required for environmental impact assessment.

Our databases are continually growing as records are added and updated. If this proposed project is still under development one year from now, we recommend that you contact us again so that we may update this response with the most current information.

The enclosed report may be included in documents that will be available to the public. However, any maps displaying locations of rare species are considered sensitive information, and are should not be included in any document that will be made available to the public, without permission from the New York Natural Heritage Program.

The presence of the plants and animals identified in the enclosed report may result in this project requiring additional review or permit conditions. For further guidance, and for information regarding other permits that may be required under state law for regulated areas or activities (e.g., regulated wetlands), please contact the appropriate NYS DEC Regional Office, Division of Environmental Permits, as listed at www.dec.ny.gov/about/39381.html.

Sincerely,

DM

David Marston
Programmer / Analyst
New York Natural Heritage Program



The following state-listed animals have been documented at your project site, or in its vicinity.

The following list includes animals that are listed by NYS as Endangered, Threatened, or Special Concern; and/or that are federally listed or are candidates for federal listing. The list may also include significant natural communities that can serve as habitat for Endangered or Threatened animals, and/or other rare animals and rare plants found at these habitats.

For information about potential impacts of your project on these populations, how to avoid, minimize, or mitigate any impacts, and any permit considerations, contact the Wildlife Manager or the Fisheries Manager at the NYSDEC Regional Office for the region where the project is located. A listing of Regional Offices is at <http://www.dec.ny.gov/about/558.html>.

The following species have been documented within 1 mi. Individual animals may travel 1 mi from documented locations.

<i>COMMON NAME</i>	<i>SCIENTIFIC NAME</i>	<i>NY STATE LISTING</i>	<i>FEDERAL LISTING</i>
Birds			
Bald Eagle <i>Nonbreeding</i>	<i>Haliaeetus leucocephalus</i>	Threatened	10503

This report only includes records from the NY Natural Heritage databases. For most sites, comprehensive field surveys have not been conducted, and we cannot provide a definitive statement as to the presence or absence of all rare or state-listed species. This information should not be substituted for on-site surveys that may be required for environmental impact assessment.

If any rare plants or animals are documented during site visits, we request that information on the observations be provided to the New York Natural Heritage Program so that we may update our database.

Information about many of the listed animals in New York, including habitat, biology, identification, conservation, and management, are available online in Natural Heritage's Conservation Guides at www.guides.nynhp.org, and from NYSDEC at <http://www.dec.ny.gov/animals/7494.html>.

Information about many of the rare plants and animals, and natural community types, in New York are available online in Natural Heritage's Conservation Guides at www.guides.nynhp.org, and from NatureServe Explorer at <http://www.natureserve.org/explorer>.



The following rare plants, rare animals, and significant natural communities have been documented at your project site, or in its vicinity.

We recommend that potential onsite and offsite impacts of the proposed project on these species or communities be addressed as part of any environmental assessment or review conducted as part of the planning, permitting and approval process, such as reviews conducted under SEQ. Field surveys of the project site may be necessary to determine the status of a species at the site, particularly for sites that are currently undeveloped and may still contain suitable habitat. Final requirements of the project to avoid, minimize, or mitigate potential impacts are determined by the lead permitting agency or the government body approving the project.

The following animals, while not listed by New York State as Endangered or Threatened, are of conservation concern to the state, and are considered rare by the New York Natural Heritage Program.

<i>COMMON NAME</i>	<i>SCIENTIFIC NAME</i>	<i>NY STATE LISTING</i>	<i>HERITAGE CONSERVATION STATUS</i>
Animal Assemblages			
Anadromous Fish Concentration Area			
Fishkill Creek Mouth, 1986: Extensive areas of mudflats, emergent marsh, subtidal beds of aquatic vegetation.			7940
Waterfowl Winter Concentration Area			
Fishkill Creek Mouth, 1985: Warm-water stream, mudflats, emergent marsh, 80 acre hay and wooded sand peninsula.			920

This report only includes records from the NY Natural Heritage databases. For most sites, comprehensive field surveys have not been conducted, and we cannot provide a definitive statement as to the presence or absence of all rare or state-listed species. This information should not be substituted for on-site surveys that may be required for environmental impact assessment.

If any rare plants or animals are documented during site visits, we request that information on the observations be provided to the New York Natural Heritage Program so that we may update our database.

Information about many of the rare animals and plants in New York, including habitat, biology, identification, conservation, and management, are available online in Natural Heritage's Conservation Guides at www.guides.nynhp.org, from NatureServe Explorer at <http://www.natureserve.org/explorer>, and from USDA's Plants Database at <http://plants.usda.gov/index.html> (for plants).

Information about many of the natural community types in New York, including identification, dominant and characteristic vegetation, distribution, conservation, and management, is available online in Natural Heritage's Conservation Guides at www.guides.nynhp.org. For descriptions of all community types, go to <http://www.dec.ny.gov/animals/29384.html> and click on Draft Ecological Communities of New York State.

This page intentionally left blank



United States Department of the Interior



FISH AND WILDLIFE SERVICE
New York Ecological Services Field Office
3817 Luker Road
Cortland, NY 13045-9385

Phone: (607) 753-9334 Fax: (607) 753-9699

<http://www.fws.gov/northeast/nyfo/es/section7.htm>

In Reply Refer To:

September 10, 2018

Consultation Code: 05E1NY00-2018-SLI-3255

Event Code: 05E1NY00-2018-E-09923

Project Name: Chai Builders Proposed Multifamily Development and Office Building

Subject: List of threatened and endangered species that may occur in your proposed project location, and/or may be affected by your proposed project

To Whom It May Concern:

The enclosed species list identifies threatened, endangered, proposed and candidate species, as well as proposed and final designated critical habitat, that may occur within the boundary of your proposed project and/or may be affected by your proposed project. The species list fulfills the requirements of the U.S. Fish and Wildlife Service (Service) under section 7(c) of the Endangered Species Act (ESA) of 1973, as amended (16 U.S.C. 1531 *et seq.*). This list can also be used to determine whether listed species may be present for projects without federal agency involvement. New information based on updated surveys, changes in the abundance and distribution of species, changed habitat conditions, or other factors could change this list.

Please feel free to contact us if you need more current information or assistance regarding the potential impacts to federally proposed, listed, and candidate species and federally designated and proposed critical habitat. Please note that under 50 CFR 402.12(e) of the regulations implementing section 7 of the ESA, the accuracy of this species list should be verified after 90 days. This verification can be completed formally or informally as desired. The Service recommends that verification be completed by visiting the ECOS-IPaC site at regular intervals during project planning and implementation for updates to species lists and information. An updated list may be requested through the ECOS-IPaC system by completing the same process used to receive the enclosed list. If listed, proposed, or candidate species were identified as potentially occurring in the project area, coordination with our office is encouraged. Information on the steps involved with assessing potential impacts from projects can be found at: <http://www.fws.gov/northeast/nyfo/es/section7.htm>

Please be aware that bald and golden eagles are protected under the Bald and Golden Eagle Protection Act (16 U.S.C. 668 *et seq.*), and projects affecting these species may require development of an eagle conservation plan (<http://www.fws.gov/windenergy/>)

[eagle_guidance.html](#)). Additionally, wind energy projects should follow the Services wind energy guidelines (<http://www.fws.gov/windenergy/>) for minimizing impacts to migratory birds and bats.

Guidance for minimizing impacts to migratory birds for projects including communications towers (e.g., cellular, digital television, radio, and emergency broadcast) can be found at: <http://www.fws.gov/migratorybirds/CurrentBirdIssues/Hazards/towers/towers.htm>; <http://www.towerkill.com>; and <http://www.fws.gov/migratorybirds/CurrentBirdIssues/Hazards/towers/comtow.html>.

We appreciate your concern for threatened and endangered species. The Service encourages Federal agencies to include conservation of threatened and endangered species into their project planning to further the purposes of the ESA. Please include the Consultation Tracking Number in the header of this letter with any request for consultation or correspondence about your project that you submit to our office.

Attachment(s):

- Official Species List

Official Species List

This list is provided pursuant to Section 7 of the Endangered Species Act, and fulfills the requirement for Federal agencies to "request of the Secretary of the Interior information whether any species which is listed or proposed to be listed may be present in the area of a proposed action".

This species list is provided by:

New York Ecological Services Field Office

3817 Luker Road

Cortland, NY 13045-9385

(607) 753-9334

Project Summary

Consultation Code: 05E1NY00-2018-SLI-3255

Event Code: 05E1NY00-2018-E-09923

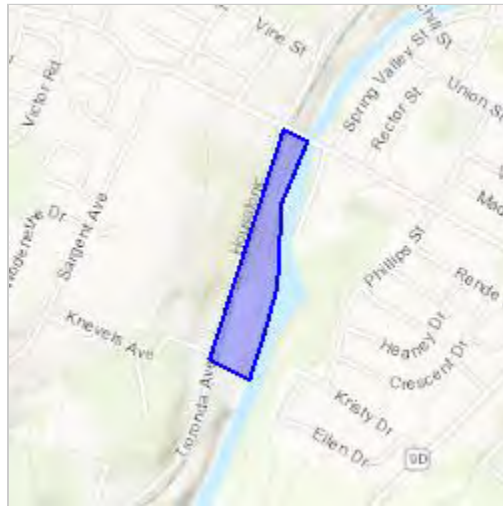
Project Name: Chai Builders Proposed Multifamily Development and Office Building

Project Type: DEVELOPMENT

Project Description: The Applicant, Chai Builders Corp., proposes the redevelopment of the northern portion of the former Tuck Industries manufacturing site with a 64-unit multifamily residential development and a 25,400 square foot (SF) office building, with associated parking. A Greenway Trail for public use is proposed along the Fishkill Creek. The proposed development is contained almost entirely within the former Tuck Industries development area.

Project Location:

Approximate location of the project can be viewed in Google Maps: <https://www.google.com/maps/place/41.49552009435731N73.96812773240211W>



Counties: Dutchess, NY

Endangered Species Act Species

There is a total of 3 threatened, endangered, or candidate species on this species list.

Species on this list should be considered in an effects analysis for your project and could include species that exist in another geographic area. For example, certain fish may appear on the species list because a project could affect downstream species.

IPaC does not display listed species or critical habitats under the sole jurisdiction of NOAA Fisheries¹, as USFWS does not have the authority to speak on behalf of NOAA and the Department of Commerce.

See the "Critical habitats" section below for those critical habitats that lie wholly or partially within your project area under this office's jurisdiction. Please contact the designated FWS office if you have questions.

-
1. [NOAA Fisheries](#), also known as the National Marine Fisheries Service (NMFS), is an office of the National Oceanic and Atmospheric Administration within the Department of Commerce.

Mammals

NAME	STATUS
Indiana Bat <i>Myotis sodalis</i> There is final critical habitat for this species. Your location is outside the critical habitat. Species profile: https://ecos.fws.gov/ecp/species/5949	Endangered
Northern Long-eared Bat <i>Myotis septentrionalis</i> No critical habitat has been designated for this species. Species profile: https://ecos.fws.gov/ecp/species/9045	Threatened

Clams

NAME	STATUS
Dwarf Wedgemussel <i>Alasmidonta heterodon</i> No critical habitat has been designated for this species. Species profile: https://ecos.fws.gov/ecp/species/784 Species survey guidelines: https://ecos.fws.gov/ipac/guideline/survey/population/363/office/52410.pdf	Endangered

Critical habitats

THERE ARE NO CRITICAL HABITATS WITHIN YOUR PROJECT AREA UNDER THIS OFFICE'S JURISDICTION.
