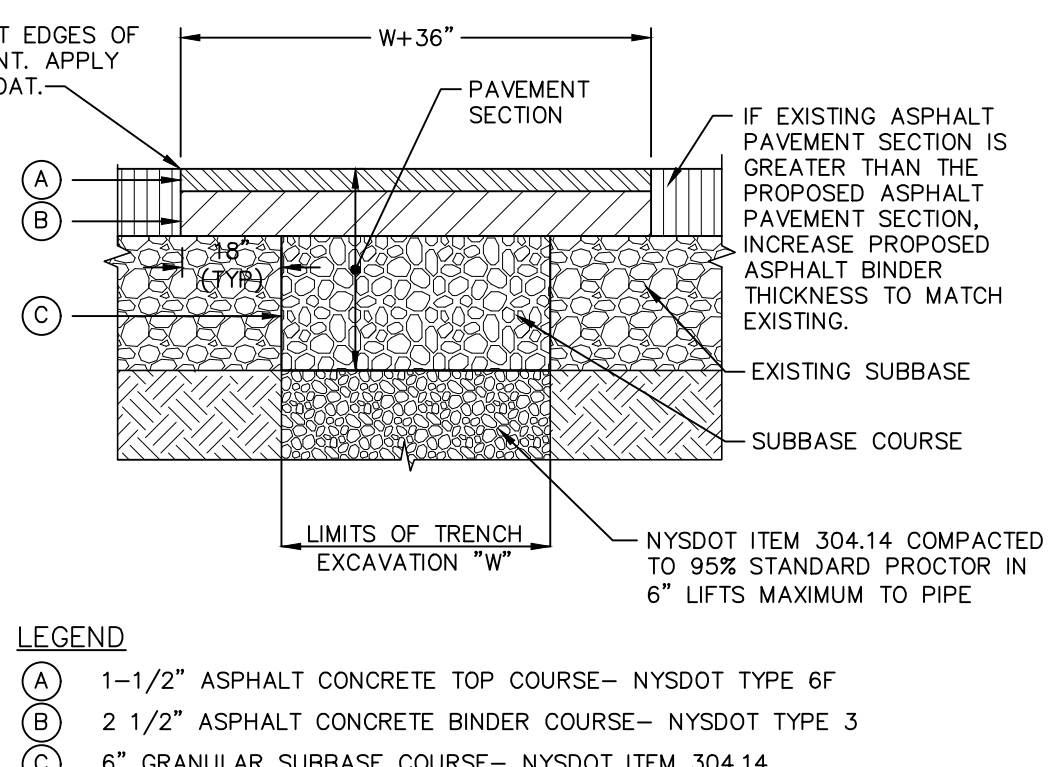
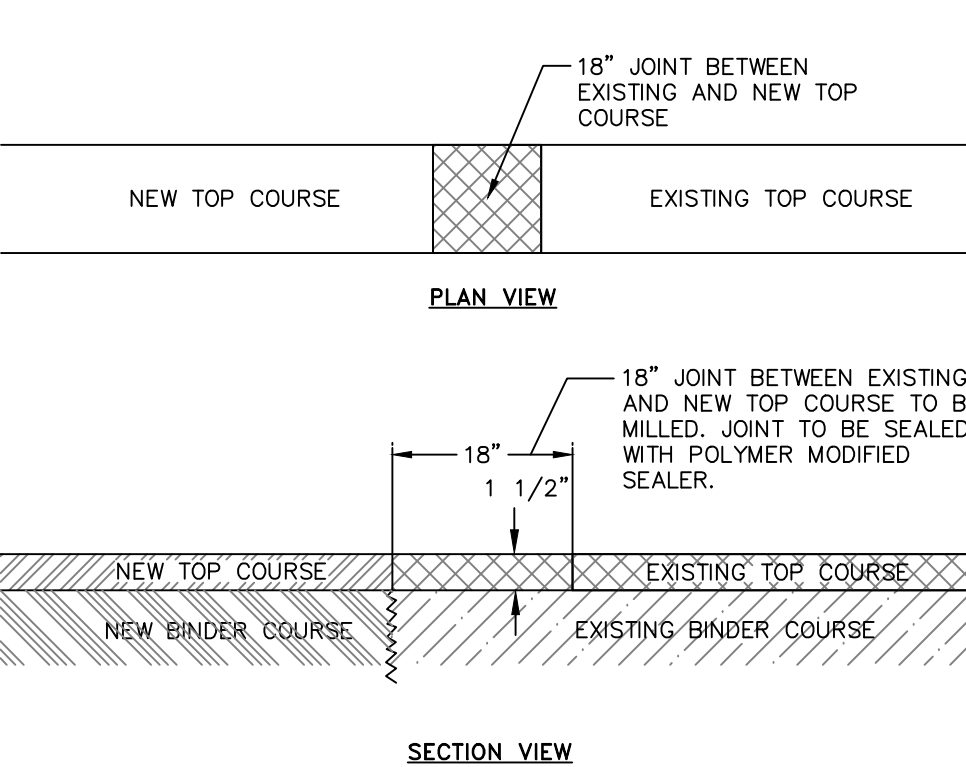
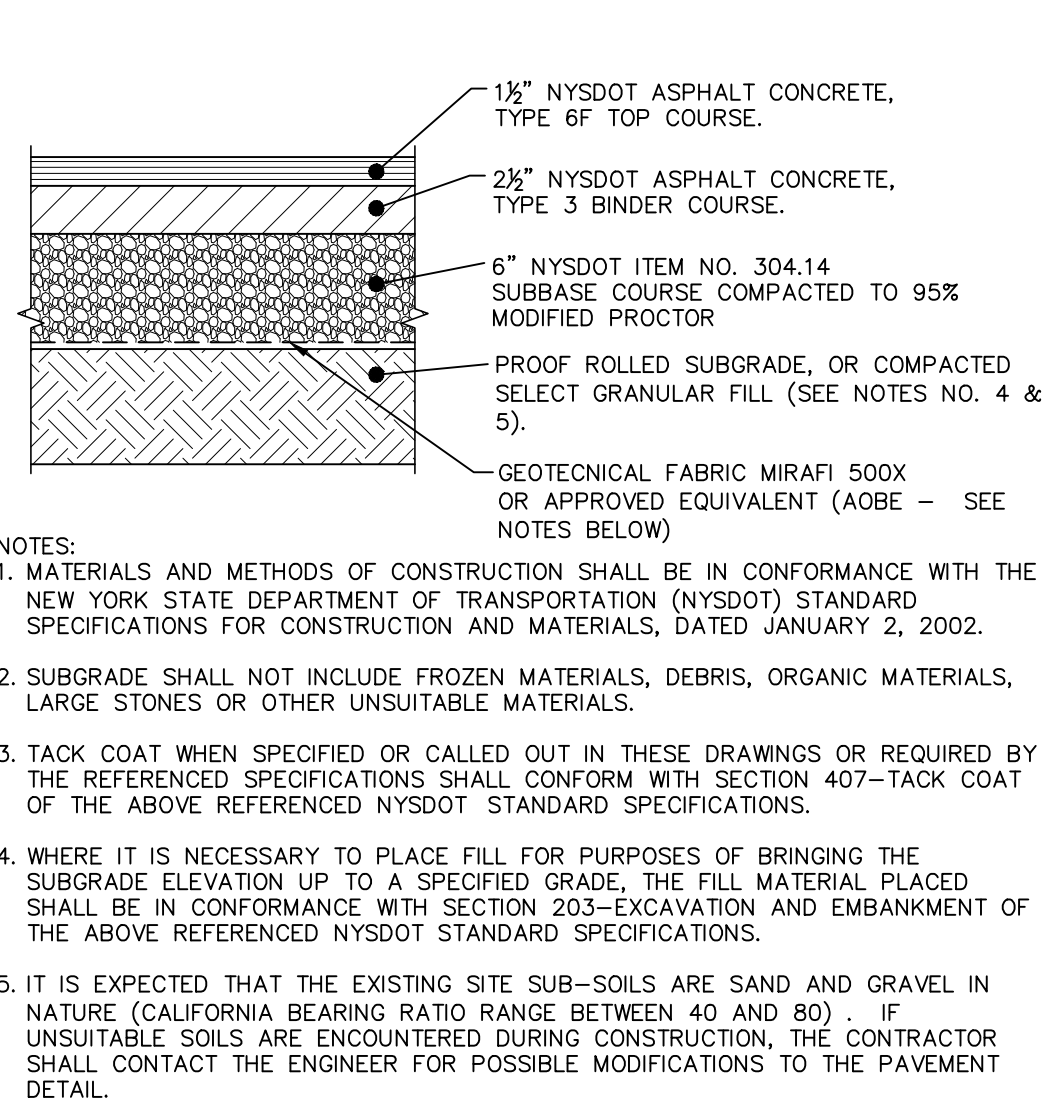


SITE DETAILS



- LEGEND
- (A) 1-1/2" ASPHALT CONCRETE TOP COURSE - NYSOT TYPE 6F
  - (B) 2 1/2" ASPHALT CONCRETE BINDER COURSE - NYSOT TYPE 3
  - (C) 6" GRANULAR SUBBASE COURSE - NYSOT ITEM 304.14
- NOTES:
1. SAW CUT MIN. 18" BEYOND EXCAVATION WITH SMOOTH EDGES.
  - 18" JOINT BETWEEN EXISTING AND NEW TOP COURSE TO BE MILED. JOINT TO BE SEALED WITH POLYMER MODIFIED SEALER.
  2. FURNISH, PLACE, AND COMPACT SUBBASE.
  3. TACK COAT IN ACCORDANCE WITH NYSOT STANDARD SPEC.
  4. FURNISH AND PLACE ASPHALT CONCRETE PAVEMENT AS SPECIFIED.

MILED KEYWAY DETAIL  
NOT TO SCALE



- NOTES:
1. MATERIALS AND METHODS OF CONSTRUCTION SHALL BE IN CONFORMANCE WITH THE NEW YORK STATE DEPARTMENT OF TRANSPORTATION (NYSOT) STANDARD SPECIFICATIONS FOR CONSTRUCTION AND MATERIALS, DATED JANUARY 2, 2002.
  2. SUBGRADE SHALL NOT INCLUDE FROZEN MATERIALS, DEBRIS, ORGANIC MATERIALS, LARGE STONES OR OTHER UNSUITABLE MATERIALS.
  3. TACK COAT WHEN SPECIFIED OR CALLED OUT IN THESE DRAWINGS OR REQUIRED BY THE REFERENCED SPECIFICATIONS SHALL CONFORM WITH SECTION 402-TACK COAT OF THE ABOVE REFERENCED NYSOT STANDARD SPECIFICATIONS.
  4. WHERE IT IS NECESSARY TO PLACE FILL FOR PURPOSES OF BRINGING THE SUBGRADE ELEVATION UP TO A SPECIFIED GRADE, THE FILL MATERIAL PLACED SHALL BE IN CONFORMANCE WITH SECTION 203-EXCAVATION AND EMBANKMENT OF THE ABOVE REFERENCED NYSOT STANDARD SPECIFICATIONS.
  5. IT IS EXPECTED THAT THE EXISTING SITE SUB-SOILS ARE SAND AND GRAVEL IN NATURE (CALIFORNIA BEARING RATIO RANGE BETWEEN 40 AND 80) - IF UNSUITABLE SOILS ARE ENCOUNTERED DURING CONSTRUCTION, THE CONTRACTOR SHALL CONTACT THE ENGINEER FOR POSSIBLE MODIFICATIONS TO THE PAVEMENT DETAIL.

PAVEMENT SECTION DETAIL  
NOT TO SCALE



PARKING AND STRIPING DETAIL  
NOT TO SCALE



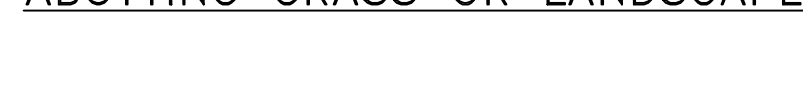
ABUTTING GRASS OR LANDSCAPE

- NOTES:
1. CONCRETE CURB SHALL BE 4,000 PSI CAST-IN-PLACE, AND IN ACCORDANCE WITH NYSOT STANDARD SPECIFICATION SECTION 609.
  2. EXPANSION JOINTS OF 1/2" CELLULOSE OR SIMILAR MATERIAL SHALL BE PLACED AT 10' FOOT INTERVALS.
  3. FOR MOUNTABLE CURBS ABUTTING SIDEWALK OR OTHER HANDICAP, REFER TO 'ABUTTING SIDEWALK' DETAIL.

CAST-IN-PLACE CONCRETE CURB DETAIL  
NOT TO SCALE



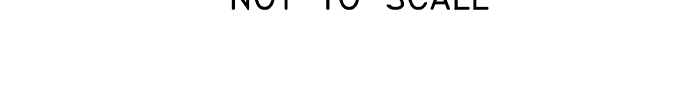
MOUNTABLE CURB  
ABUTTING GRASS OR LANDSCAPE



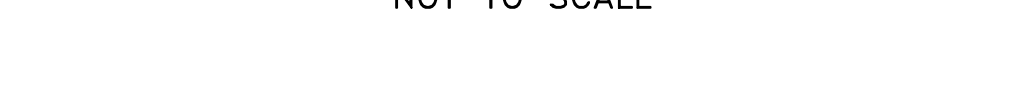
MONOLITHIC CURB AND SIDEWALK DETAIL FOR BRANCH STREET  
NOT TO SCALE



PAINTED CROSSWALK DETAIL  
NOT TO SCALE



BRANCH STREET WIDENING SECTION DETAIL  
NOT TO SCALE



CONCRETE PAVER DETAIL  
NOT TO SCALE



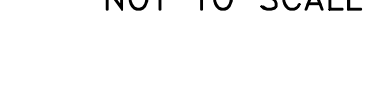
SINGLE POST SIGN DETAIL  
NOT TO SCALE



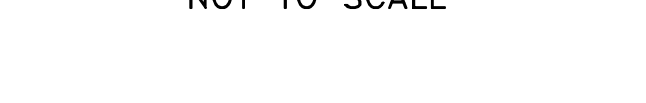
STOP BAR DETAIL  
NOT TO SCALE



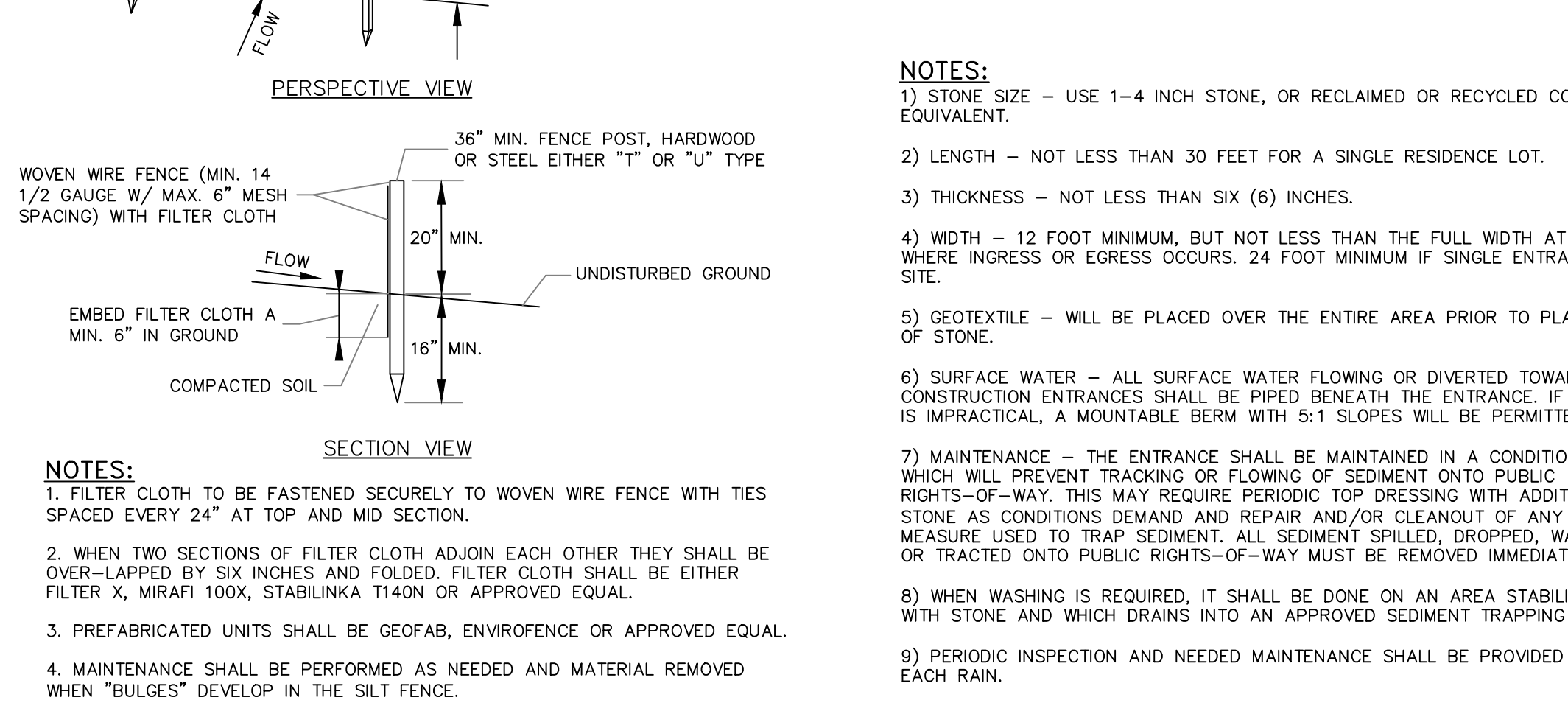
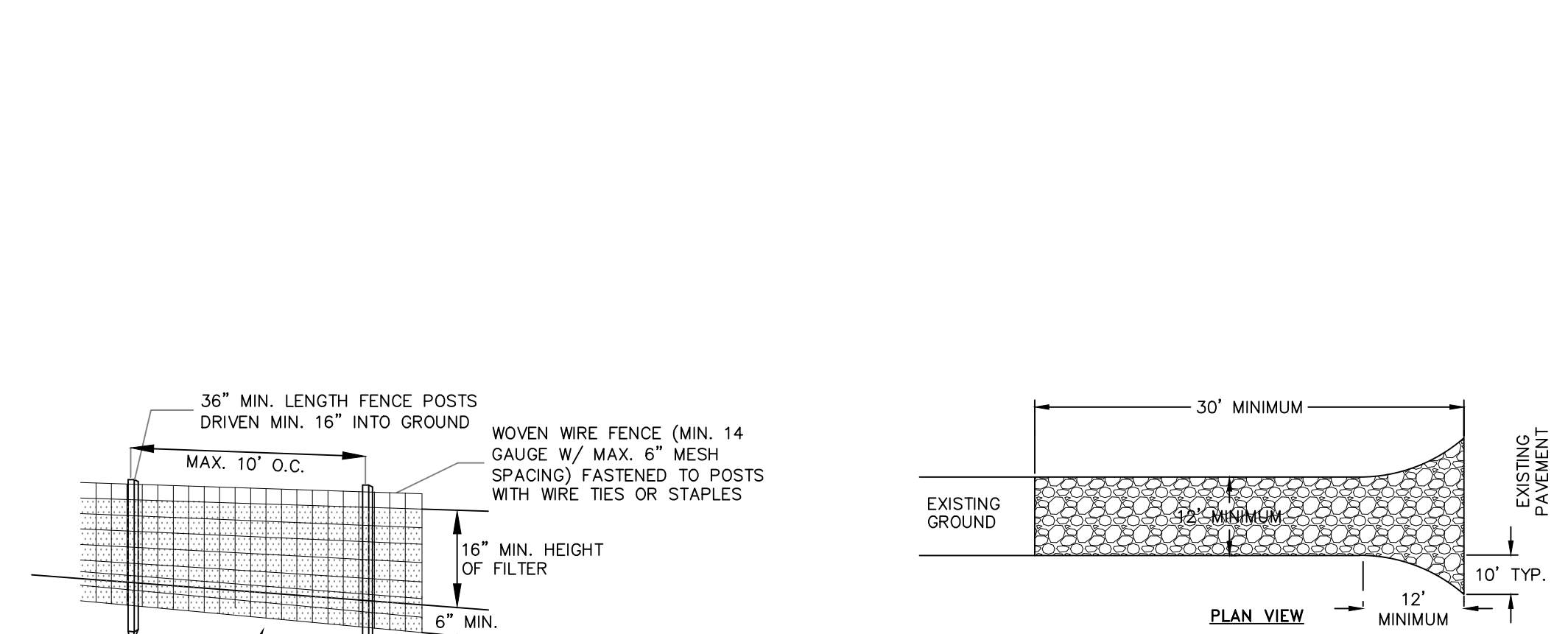
SPEED TABLE DETAIL  
NOT TO SCALE



REMOVABLE BOLLARD DETAIL  
NOT TO SCALE



EROSION AND SEDIMENT CONTROL DETAILS



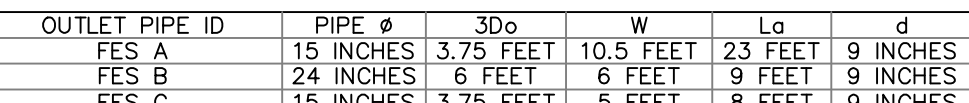
SILT FENCE DETAIL  
NOT TO SCALE



STABILIZED CONSTRUCTION ENTRANCE DETAIL  
NOT TO SCALE

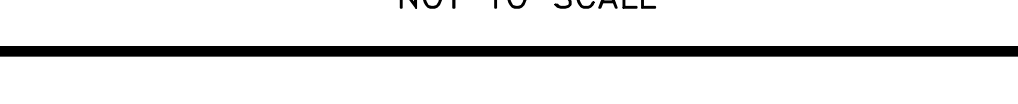


ROCK OUTLET PROTECTION DETAIL  
NOT TO SCALE



OUTLET PIPE ID	PIPE #	30\"/>
FES A	15 INCHES 3.75 FEET 10.25 FEET	3 FEET 9 INCHES 4 INCHES
FES B	24 INCHES 6 FEET 8 FEET 9 FEET	9 FEET 9 INCHES 4 INCHES
FES C	15 INCHES 3.75 FEET 10.25 FEET	8 FEET 9 INCHES 4 INCHES
FES E	24 INCHES 6 FEET 8 FEET 9 FEET	13 FEET 14 INCHES 6 INCHES

CATCH BASIN INLET PROTECTION DETAIL  
NOT TO SCALE



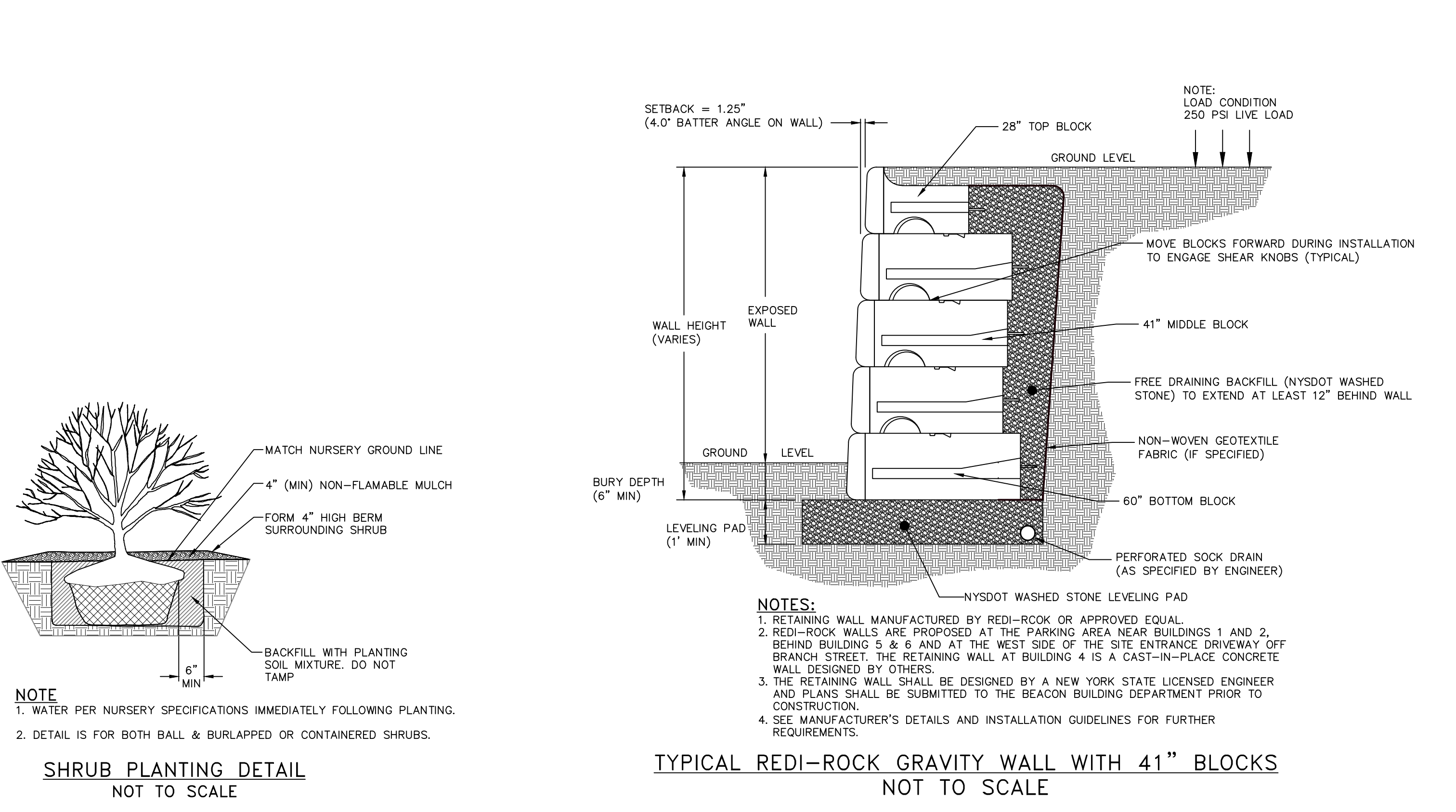
TOPSOIL, SEED AND MULCH DETAIL  
NOT TO SCALE



TEMPORARY TREE PROTECTION DETAIL  
NOT TO SCALE



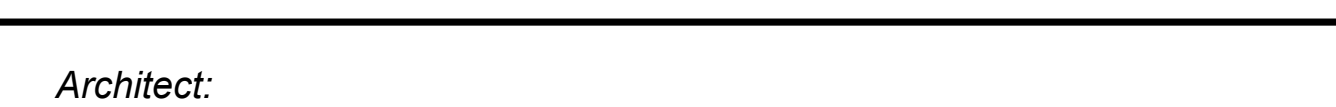
LANDSCAPING DETAILS



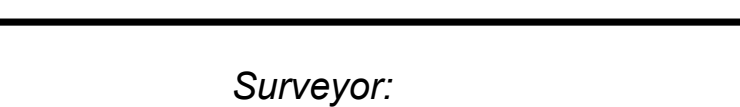
- NOTE
1. WATER PER NURSERY SPECIFICATIONS IMMEDIATELY FOLLOWING PLANTING.
  2. DETAIL IS FOR BOTH BALL & BURLAPPED OR CONTAINERED SHRUBS.

SHRUB PLANTING DETAIL  
NOT TO SCALE

TYPICAL REDI-ROCK GRAVITY WALL WITH 41\"/>



TRASH ENCLOSURE DETAILS  
NOT TO SCALE



APPROVED BY RESOLUTION OF THE PLANNING BOARD OF THE CITY OF BEACON, NEW YORK, ON THE \_\_\_\_\_ DAY OF \_\_\_\_\_, 20\_\_\_\_.

DAY OF \_\_\_\_\_, 20\_\_\_\_. SUBJECT TO ALL REQUIREMENTS AND CONDITIONS OF SAID RESOLUTION, ANY CHANGE, ERRASURE, MODIFICATION OR REVISION OF THIS PLAT, AS APPROVED, SHALL VOID THIS APPROVAL.

SIGNED THIS \_\_\_\_\_ DAY OF \_\_\_\_\_, 20\_\_\_\_ BY \_\_\_\_\_ CHAIRMAN

IN ABSENCE OF THE CHAIRMAN OR SECRETARY, THE ACTING CHAIRMAN OR ACTING SECRETARY RESPECTIVELY MAY SIGN IN THIS PLACE.

SECRETARY

REVISIONS:

NO.	DATE	DESCRIPTION	BY
1	2/28/17	PER PLANNING BOARD COMMENTS	CMB
2	3/28/17	PER PLANNING BOARD COMMENTS	MAB
3	4/25/17	NO CHANGE THIS SHEET	MAB
4	5/30/17	PER PLANNING BOARD COMMENTS	MAB
5	7/25/17	NO CHANGE THIS SHEET	MAB
6	9/25/17	NO CHANGE THIS SHEET	MAB
7	9/26/17	PER PLANNING BOARD COMMENTS	MAB
8	10/31/17	NO CHANGE THIS SHEET	MAB
9	11/28/17	NO CHANGE THIS SHEET	MAB
10	06/26/18	NO CHANGE THIS SHEET	MAB
11	7/31/18	PER PLANNING BOARD COMMENTS	MAB
12	8/28/18	PER PLANNING BOARD COMMENTS	MAB

JON D. BODENDORF, P.E.  
NYS LICENSE NO. 078245  
DANIEL G. KOEHLER, P.E.  
NYS LICENSE NO. 082716

Special Use Permit Application

Site, Landscaping and Erosion & Sediment Control Details

Sheet 13 of 15

Edgewater

Beacon, New York

Scale: As Noted

December 22, 2016

Owner:  
**Scenic Beacon Development, LLC**  
25 E. Main Street  
Beacon, NY 12508

Architect:  
**Aryeh Siegel, Architect**  
514 Main Street  
Beacon, New York 12508

Site/Civil Engineer:  
**Hudson Land Design**  
174 Main Street  
Beacon, New York 12508

Surveyor:  
**TEC Land Surveying**  
Main Street  
Beacon, New York 12508