

TRELLIS  
PAINTED METAL RAILING

DOUBLE GLAZED  
INSULATED WINDOWS

42" HIGH TEMPERED  
GLASS RAILING IN  
FRONT OF DOUBLE  
FRENCH DOORS

METAL CANOPY AT  
ENTRANCE

TRELLIS WITH PLANTING

CONCRETE FOUNDATION  
WALLS

TRELLIS  
PAINTED METAL RAILING

DOUBLE GLAZED  
INSULATED WINDOWS

42" HIGH TEMPERED  
GLASS RAILING IN  
FRONT OF DOUBLE  
FRENCH DOORS

METAL CANOPY AT  
ENTRANCE

CONCRETE FOUNDATION  
WALLS



Building Elevation: Building #3, 6

1/16" = 1'-0"



Building Elevation: Building #3, 6

1/16" = 1'-0"

STANDING SEAM  
GALVANIZED METAL  
ROOF

DOUBLE GLAZED  
INSULATED WINDOWS

42" HIGH TEMPERED  
GLASS RAILING IN  
FRONT OF DOUBLE  
FRENCH DOORS

FRENCH DOORS AT  
COMMON SPACE

CONCRETE FOUNDATION  
WALLS



Building Elevation: Building #4

1/16" = 1'-0"



Building Elevation: Building #4

1/16" = 1'-0"

STANDING SEAM  
GALVANIZED METAL  
ROOF

DOUBLE GLAZED  
INSULATED WINDOWS

42" HIGH TEMPERED  
GLASS RAILING IN  
FRONT OF DOUBLE  
FRENCH DOORS

CONCRETE FOUNDATION  
WALLS



Building Elevation: Typical Gable Roof Building # 1, 2, 5, 7

1/16" = 1'-0"

STANDING SEAM  
GALVANIZED METAL  
ROOF

DOUBLE GLAZED  
INSULATED WINDOWS

42" HIGH TEMPERED  
GLASS RAILING IN  
FRONT OF DOUBLE  
FRENCH DOORS

CONCRETE FOUNDATION  
WALLS



Building Elevation: Typical Gable Roof Building # 1, 2, 5, 7

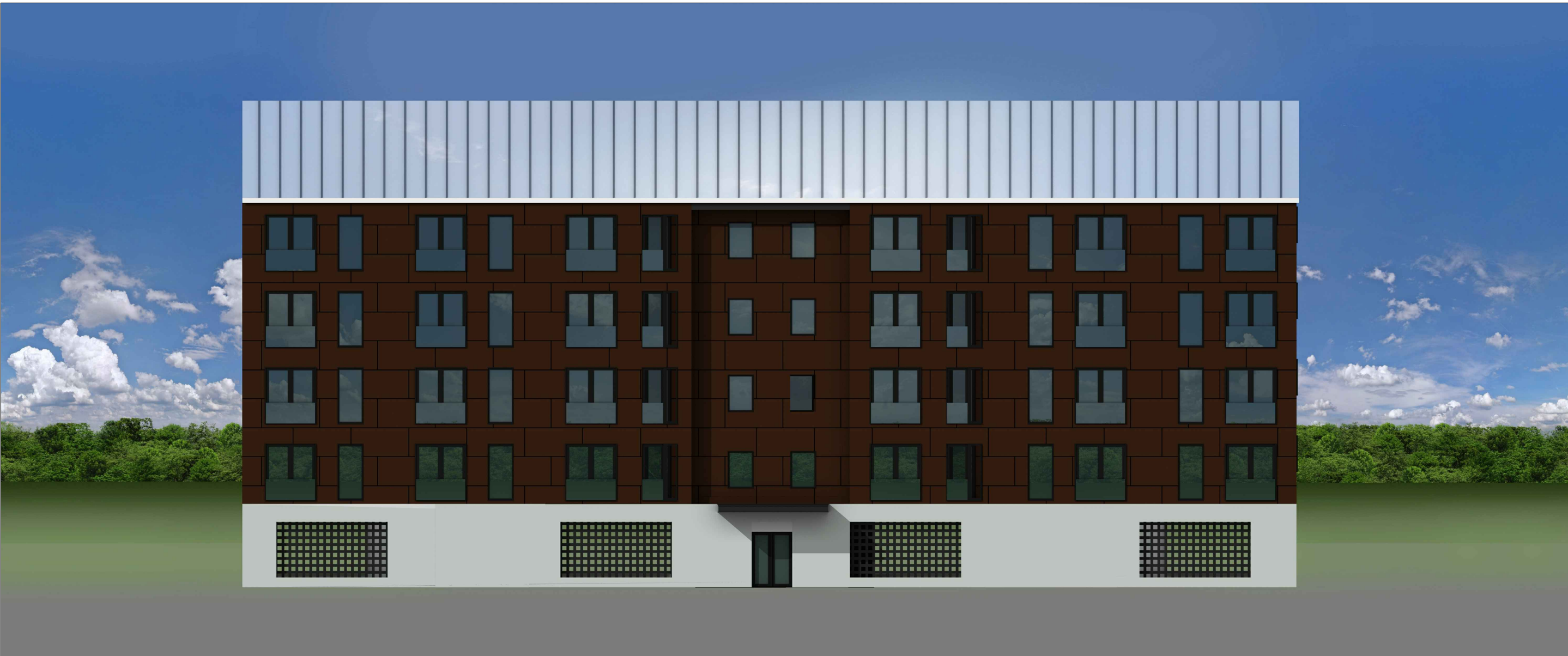
1/16" = 1'-0"

STANDING SEAM  
GALVANIZED METAL  
ROOF

DOUBLE GLAZED  
INSULATED WINDOWS

42" HIGH TEMPERED  
GLASS RAILING IN  
FRONT OF DOUBLE  
FRENCH DOORS

CONCRETE FOUNDATION  
WALLS



Building Elevation: Typical Gable Roof Building Over Podium # 1, 2, 5, 7

STANDING SEAM  
GALVANIZED METAL  
ROOF

DOUBLE GLAZED  
INSULATED WINDOWS

42" HIGH TEMPERED  
GLASS RAILING IN  
FRONT OF DOUBLE  
FRENCH DOORS

CONCRETE FOUNDATION  
WALLS



Building Elevation: Typical Gable Roof Building Over Podium #1, 2, 5, 7

1/16" = 1'-0"

NOTE: THESE BUILDING ELEVATIONS ARE COMPOSITE DRAWINGS  
INTENDED TO SHOW THE DESIGN OF THE BUILDINGS IN VARIOUS  
CONFIGURATIONS. THESE ELEVATIONS ARE INTENDED TO AID THE  
ARCHITECTURAL REVIEW BOARD IN EVALUATING THE DESIGN.

Building Renderings & Site Sections

Sheet 9 of 15

Edgewater

Beacon, New York  
Scale: NTS  
January 31, 2017

Owner:  
Scenic Beacon Developments, LLC

25 East Main Street  
Beacon, NY 12508

Architect:  
Aryeh Siegel, Architect

514 Main Street  
Beacon, New York 12508

Site / Civil Engineer:  
Hudson Land Design

174 Main Street  
Beacon, New York 12508

Surveyor:  
TEC Land Surveying, P.C.

15C Tioronda Avenue  
Beacon, New York 12508