

This is to certify that the proposed arrangements for water supply and sewage disposal for PENNELOPE HEDGES SUBDIVISION in the CITY OF BEACON, in accordance with plans on file in the Office of the Dutchess County Department of Health, Consent is hereby given to the filing of the map on which this endorsement appears in the Office of the County Clerk of Dutchess County in accordance with the provisions of Article 11, Title 2 of the New York State Public Health Law and Article 17, Title 15 of the New York State Environmental Conservation Law, and Article 11 of the Dutchess County Sanitary Code.

Supervising Public Health Engineer

PLANNING BOARD APPROVAL

Approved by the Planning Board of the City of Beacon, Dutchess County, N.Y. by resolution dated \_\_\_\_\_.

Subject to the requirements and conditions of said resolution. Any change, erratum, modification or revision to this Plan, as approved, shall void this approval.

Signed this \_\_\_\_ day of \_\_\_\_\_, 20\_\_.

Chair of the Planning Board

NOTES

- Unauthorized alteration or addition to a document prepared by a licensed Land Surveyor or licensed Professional Engineer is a violation of Section 2209, Sub-Division 2 of the New York State Education Law.
- The topographic data hereon was compiled photographically from digital aerial photographs, dated April 2003, with 2 inch pixels. The compilation scale was 1 inch to 550 feet.
- The area, meridian, distances and coordinate values shown hereon refer to the New York Coordinate System, East Zone (NAD 83), expressed in feet. The distances shown on this map are grid distances. They have been scaled by a grid factor (scale factor x sea level factor) of 0.9999992. To obtain ground distances divide the distances on this map by the grid factor. To obtain ground area divide the area on this map by the square of the grid factor.
- The vertical datum hereon is North American Vertical Datum of 1988 (NAVD 1988).

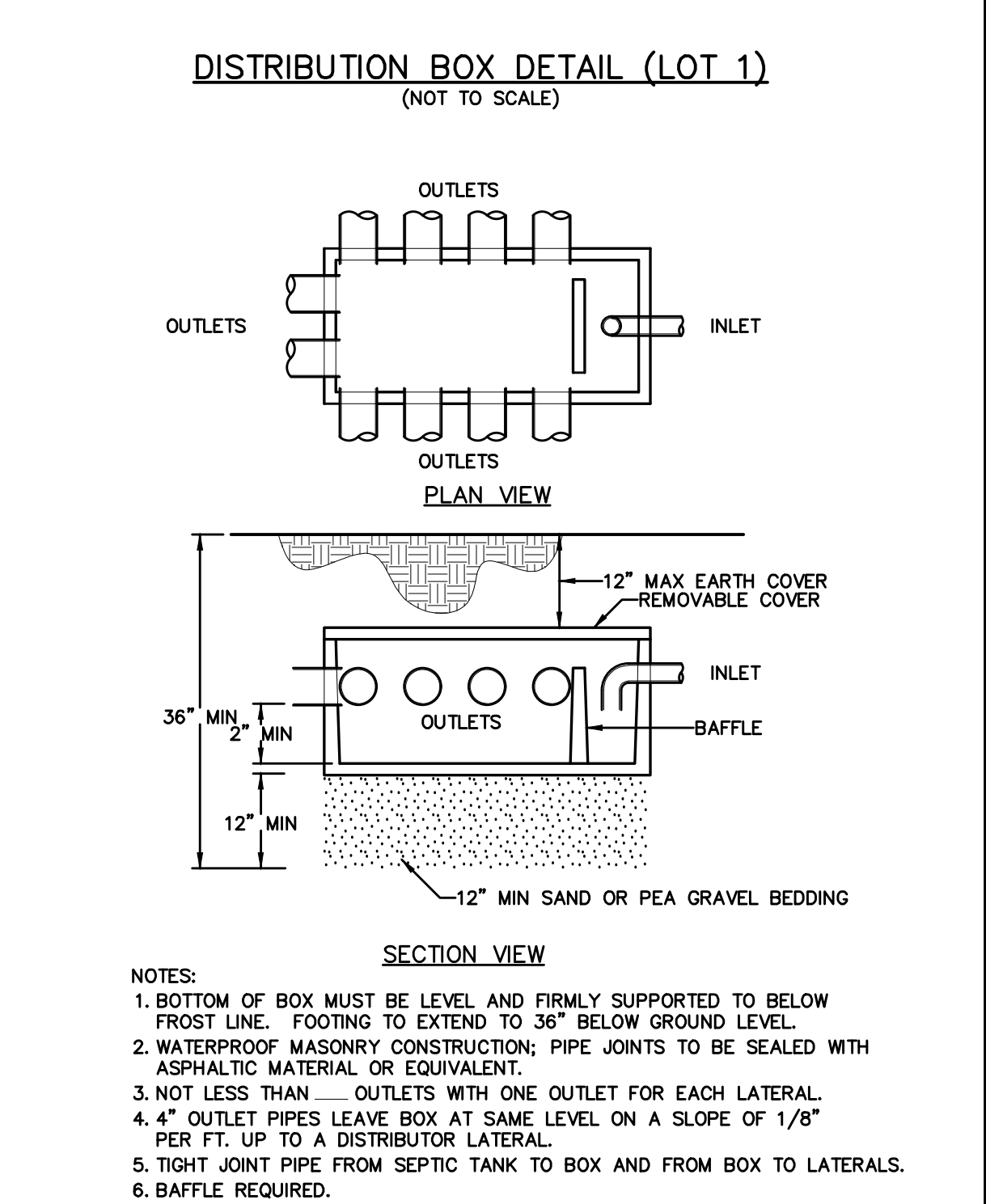
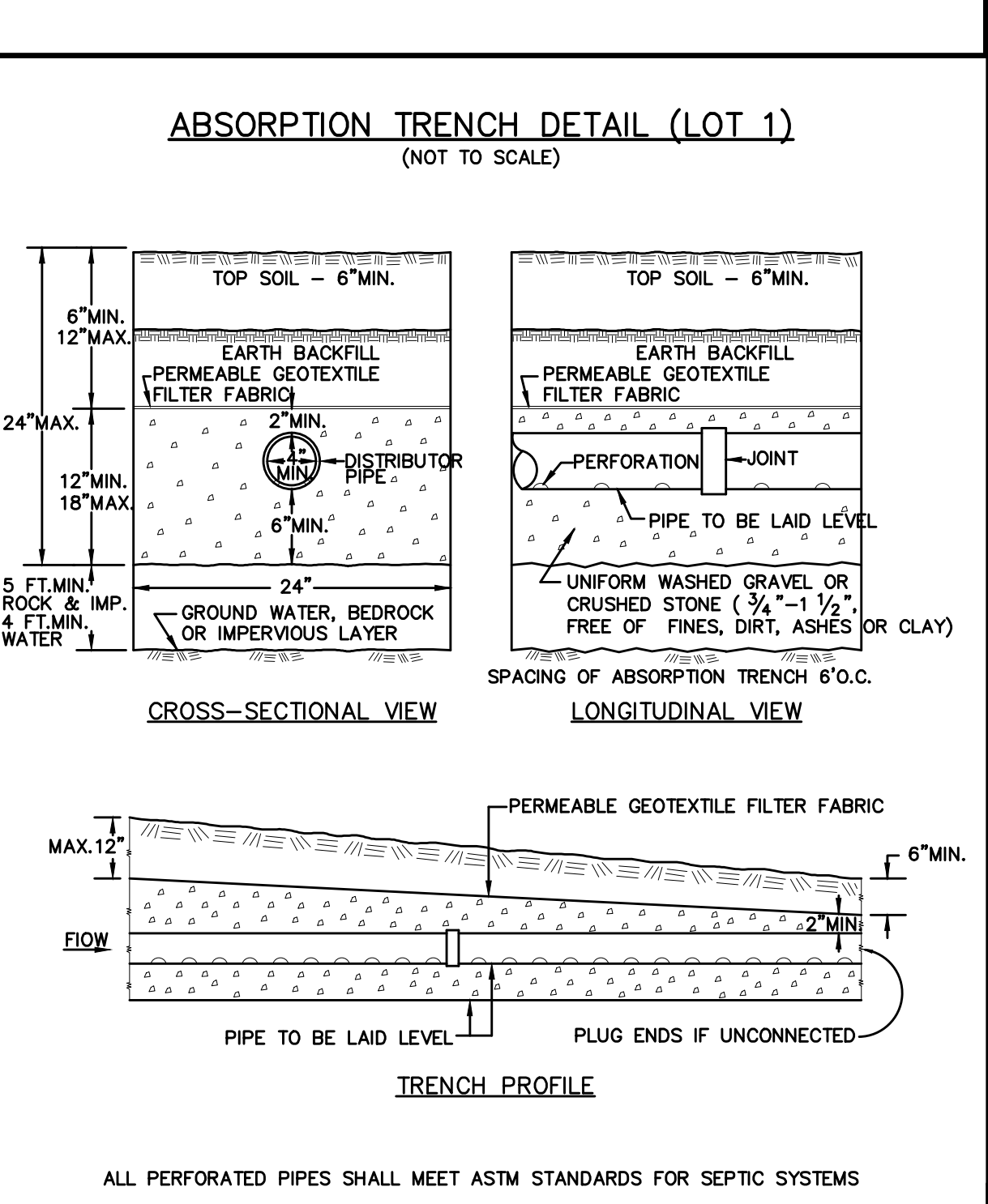
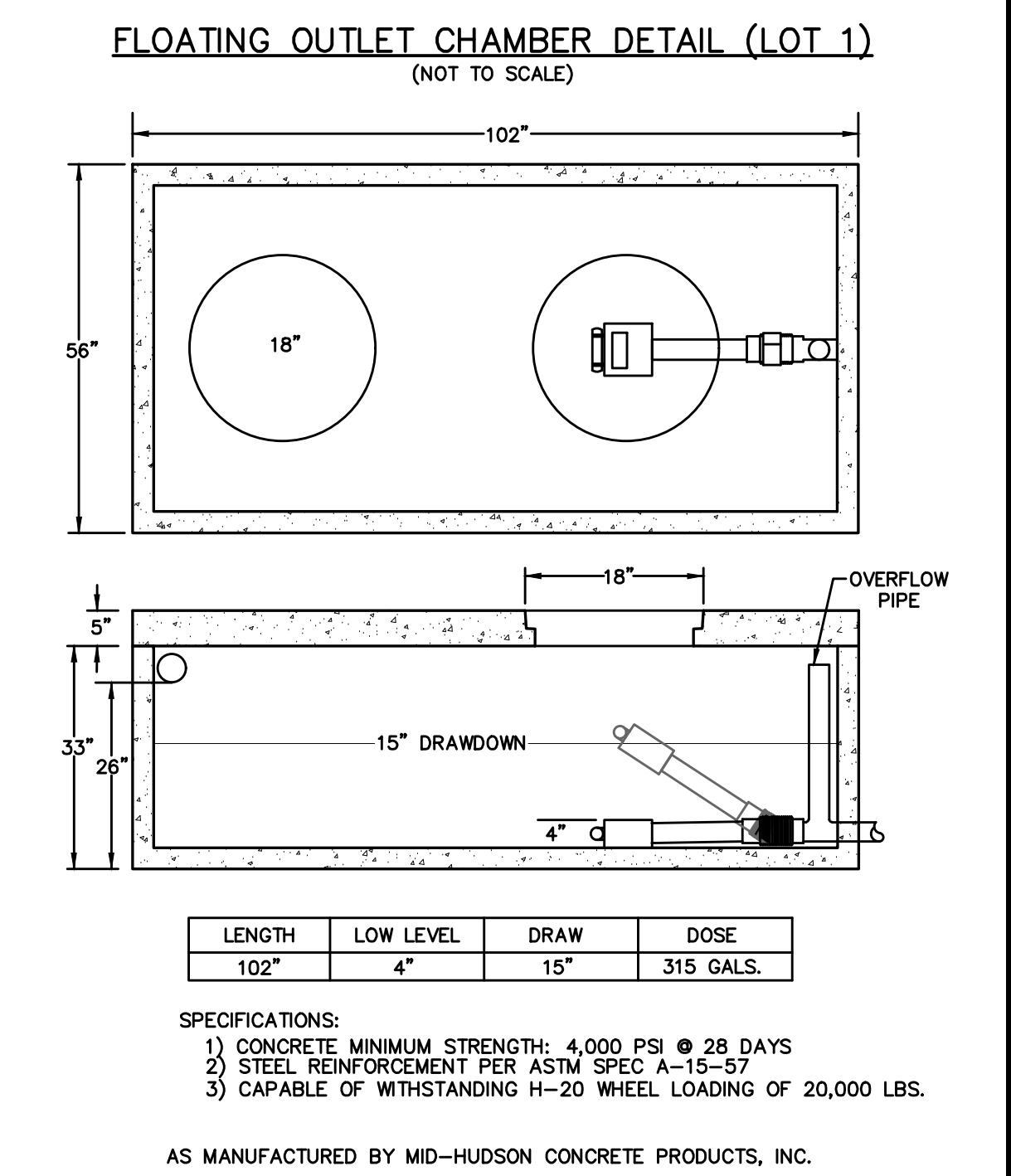
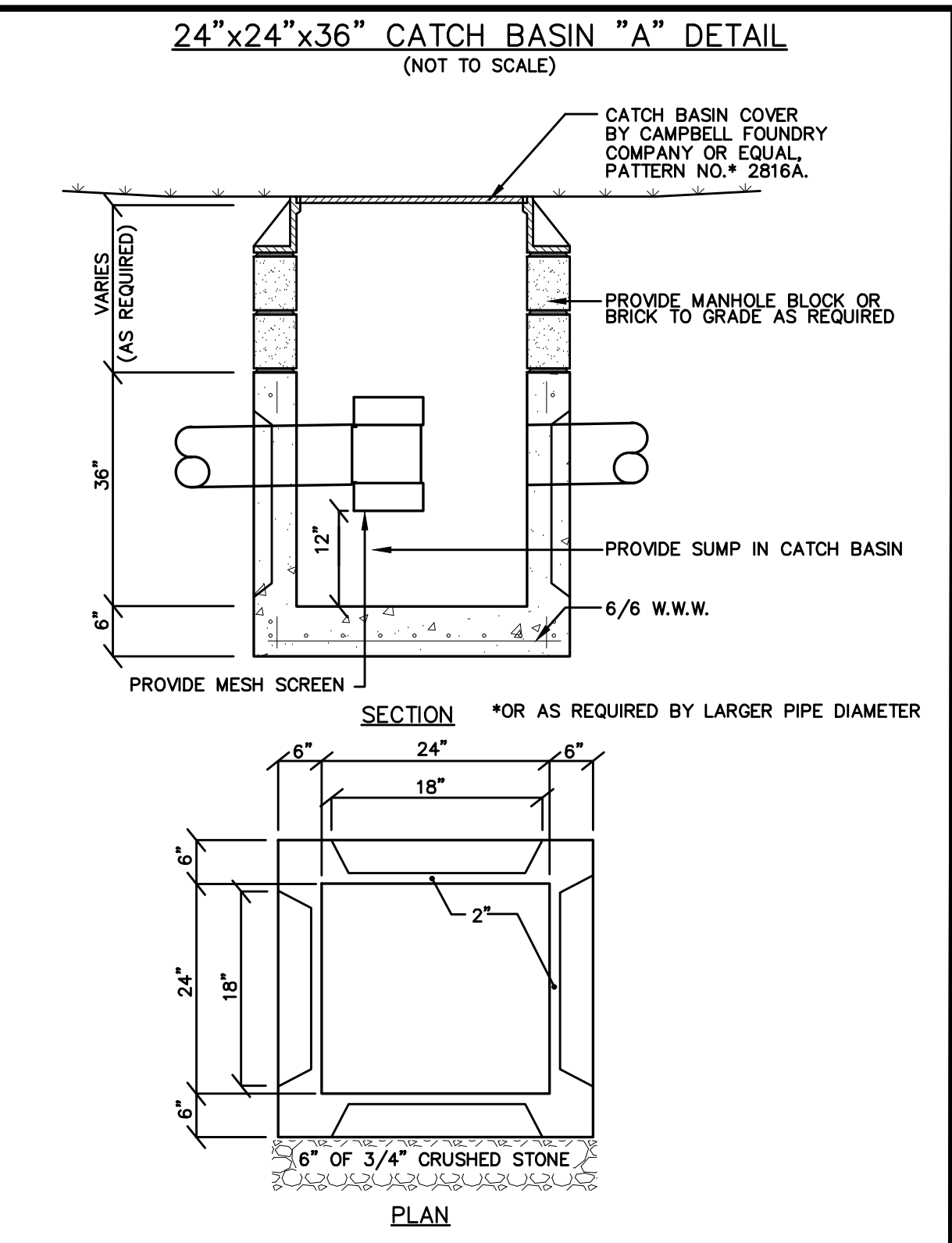
REVISIONS	DATE	DESCRIPTION
See Title	R01	Original Drawing
06/26/18	R02	Revised per Planning Board Comment
07/30/18	R03	Stipulated Subdivision map from Integrated Plot Plan by creating 4th Street
		Responses to City Engineer's and Planner's comment letters
08/28/18	R04	Revised in response to comments

ENGINEER	ENGINEER	SURVEYOR	SURVEYOR	OWNER & APPLICANT	OWNER'S APPROVAL	PROPERTY DATA

**BADEY & WATSON**  
Surveying & Engineering, P.C.

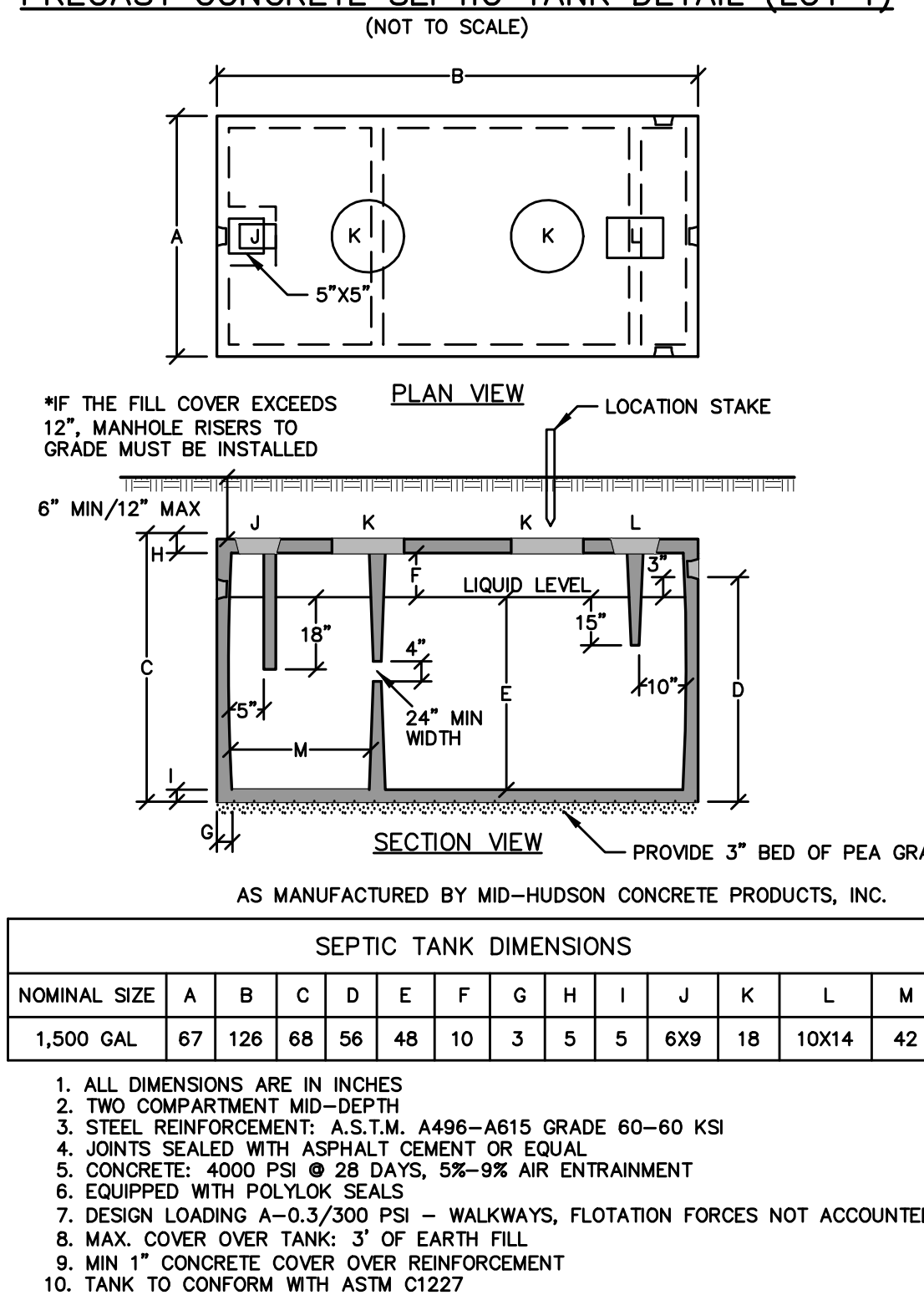
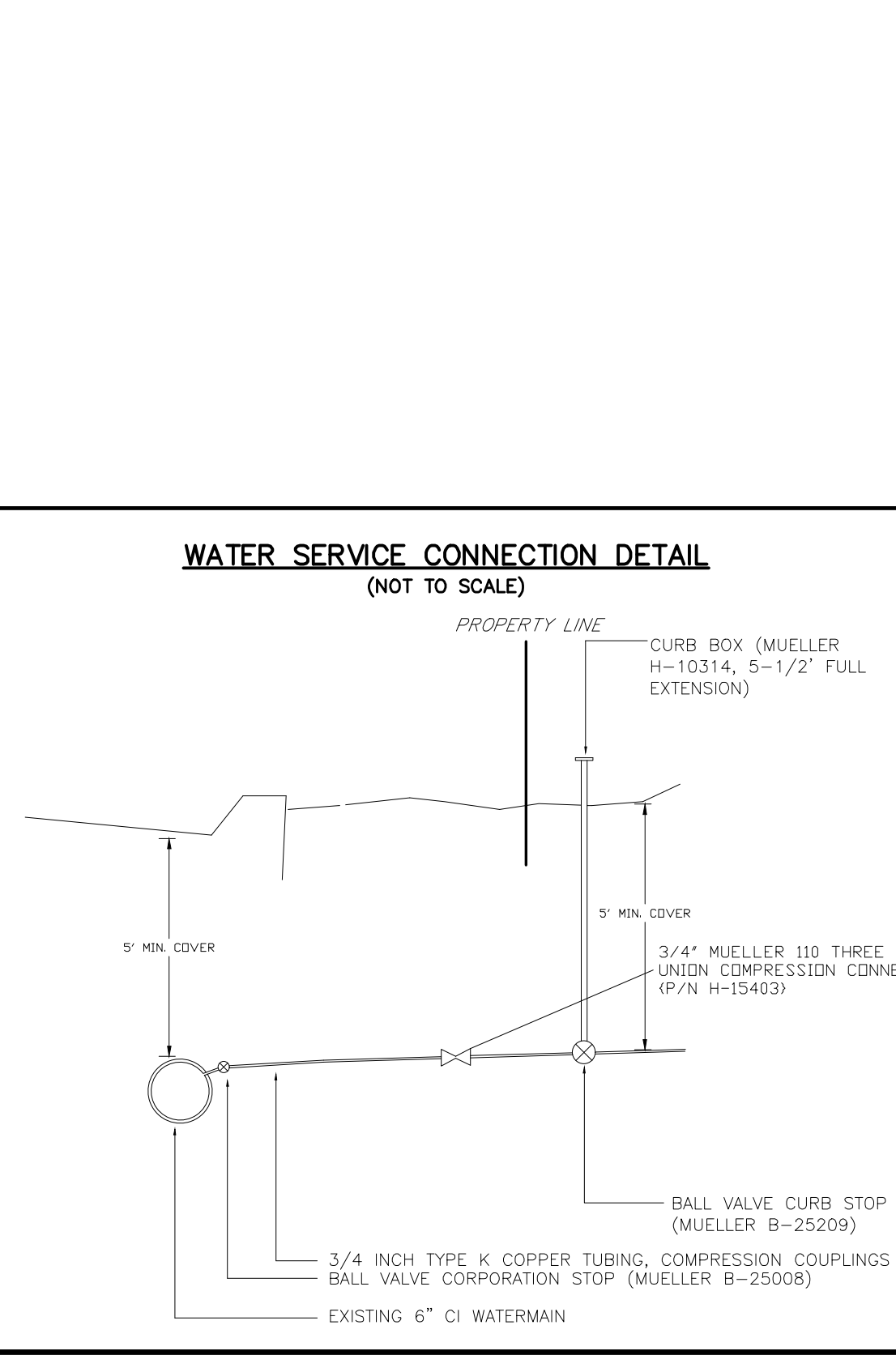
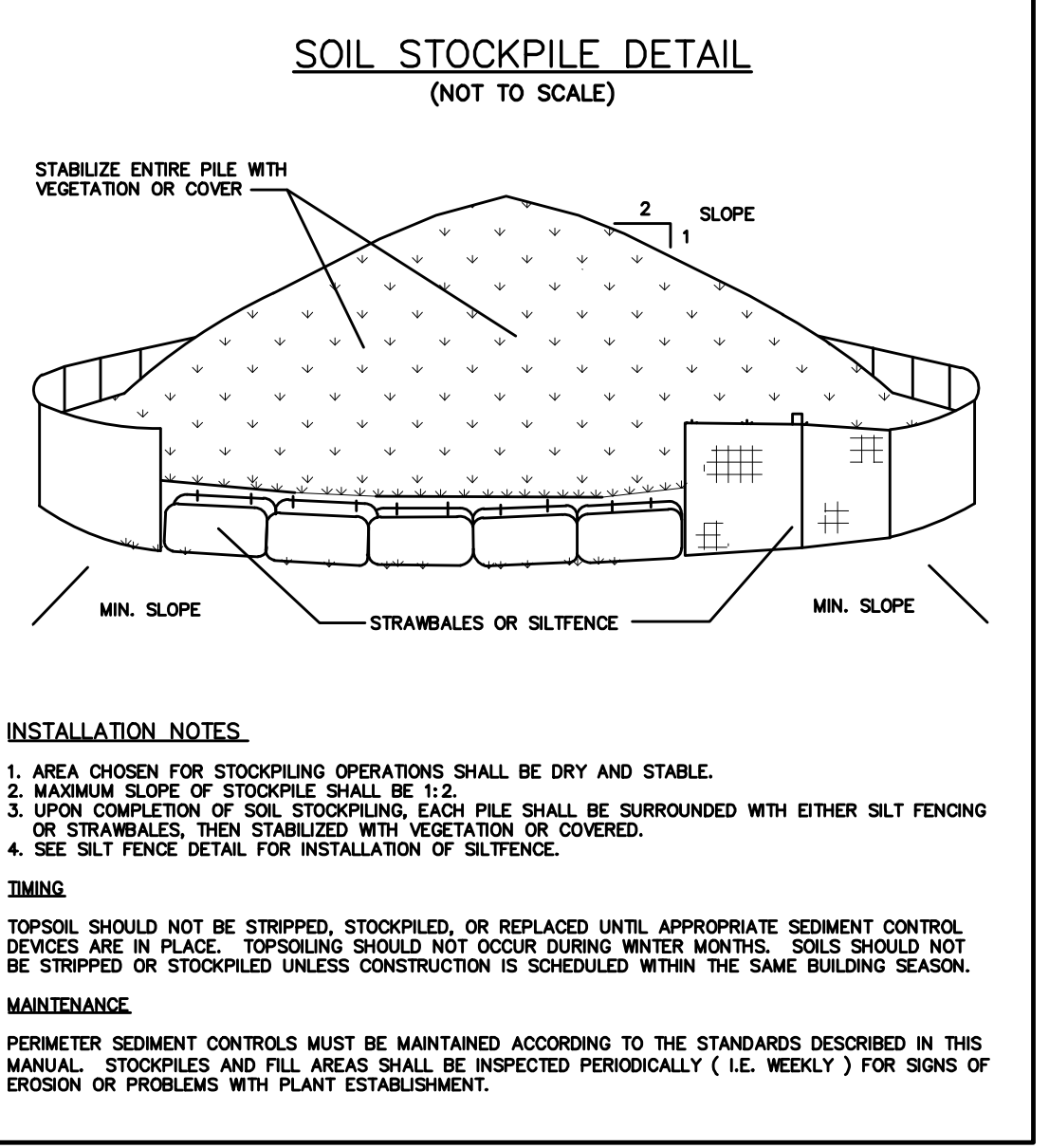
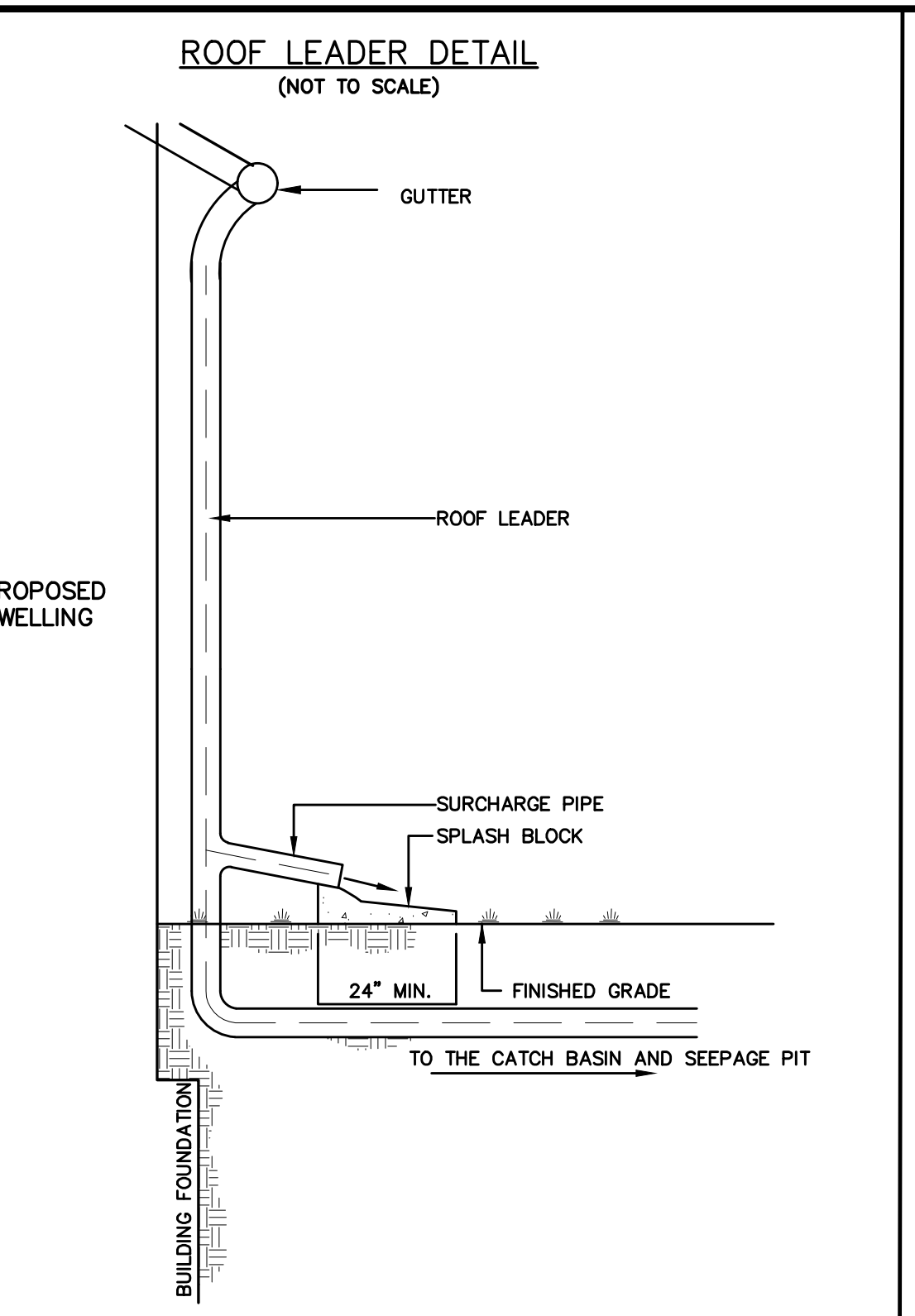
3563 Route 9  
Cold Spring, NY 10516  
www.Badey-Watson.com

845.265.9317  
845.265.4428 (Fax)  
877.3.141.991 (Toll Free)



NOTES:

- BOTTOM OF BOX MUST BE LEVEL AND FIRMLY SUPPORTED TO BELOW FROST LINE. FOOTING TO EXTEND TO 36" BELOW GROUND LEVEL.
- WATERPROOF MASONRY CONSTRUCTION. PIPE JOINTS TO BE SEALED WITH ASPHALTIC MATERIAL OR EQUIVALENT.
- NOT LESS THAN 12" OUTLETS WITH ONE OUTLET FOR EACH LATERAL.
- 4" OUTLET PIPES LEAVE BOX AT SAME LEVEL ON A SLOPE OF 1/8" PER FT. UP TO A DISTRIBUTOR LATERAL.
- TIGHT JOINT PIPE FROM SEPTIC TANK TO BOX AND FROM BOX TO LATERALS.
- BAFFLE REQUIRED.

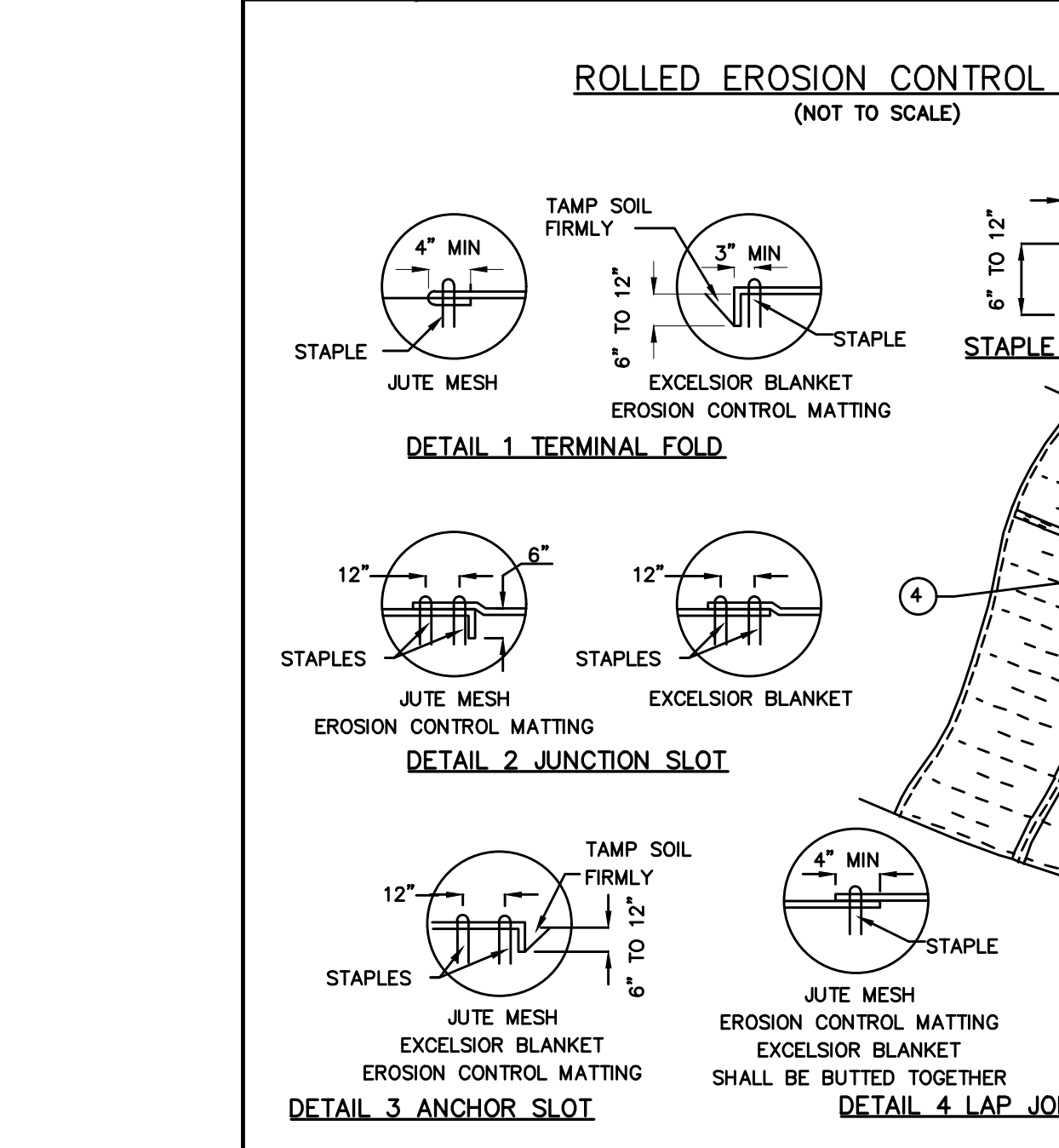


NOTES:

- ALL DIMENSIONS ARE IN INCHES
- TWO COMPARTMENT MID-DEPTH
- STEEL REINFORCEMENT, A.S.T.M. A496-A515 GRADE 60-60 KSI
- JOINTS SEALED WITH ASPHALT CEMENT OR EQUAL
- CONCRETE, 4000 PSI @ 28 DAYS, 5% AIR ENTRAINMENT
- EQUIPPED WITH POLYLOK SEALS
- DESIGN LOADING 4-10/3,200 PSI - WALKWAYS, FLOTATION FORCES NOT ACCOUNTED FOR
- MAX. COVER OVER TANK 3' OF EARTH FILL
- MIN 1" CONCRETE COVER OVER REINFORCEMENT
- TANK TO CONFORM WITH ASTM C1227

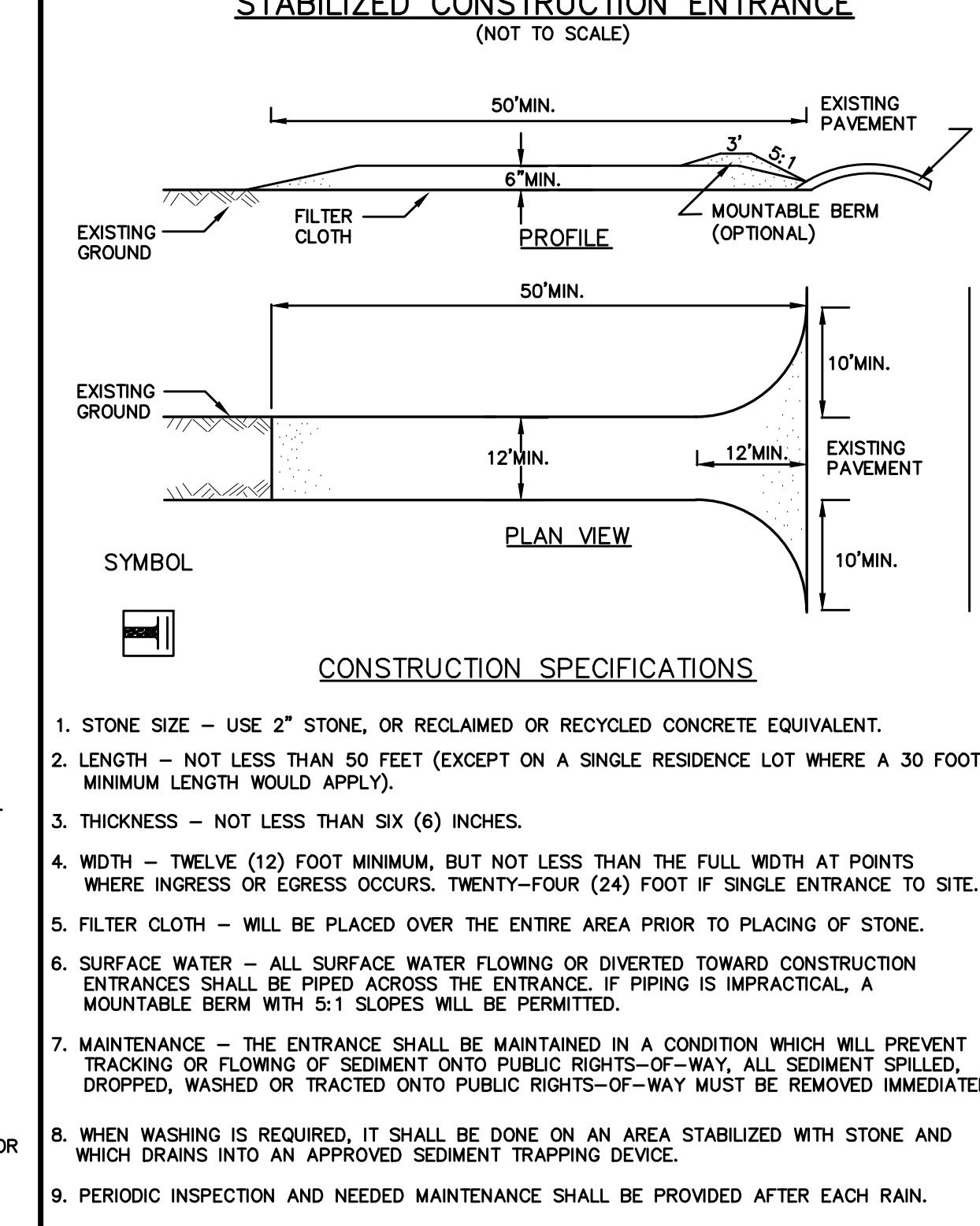
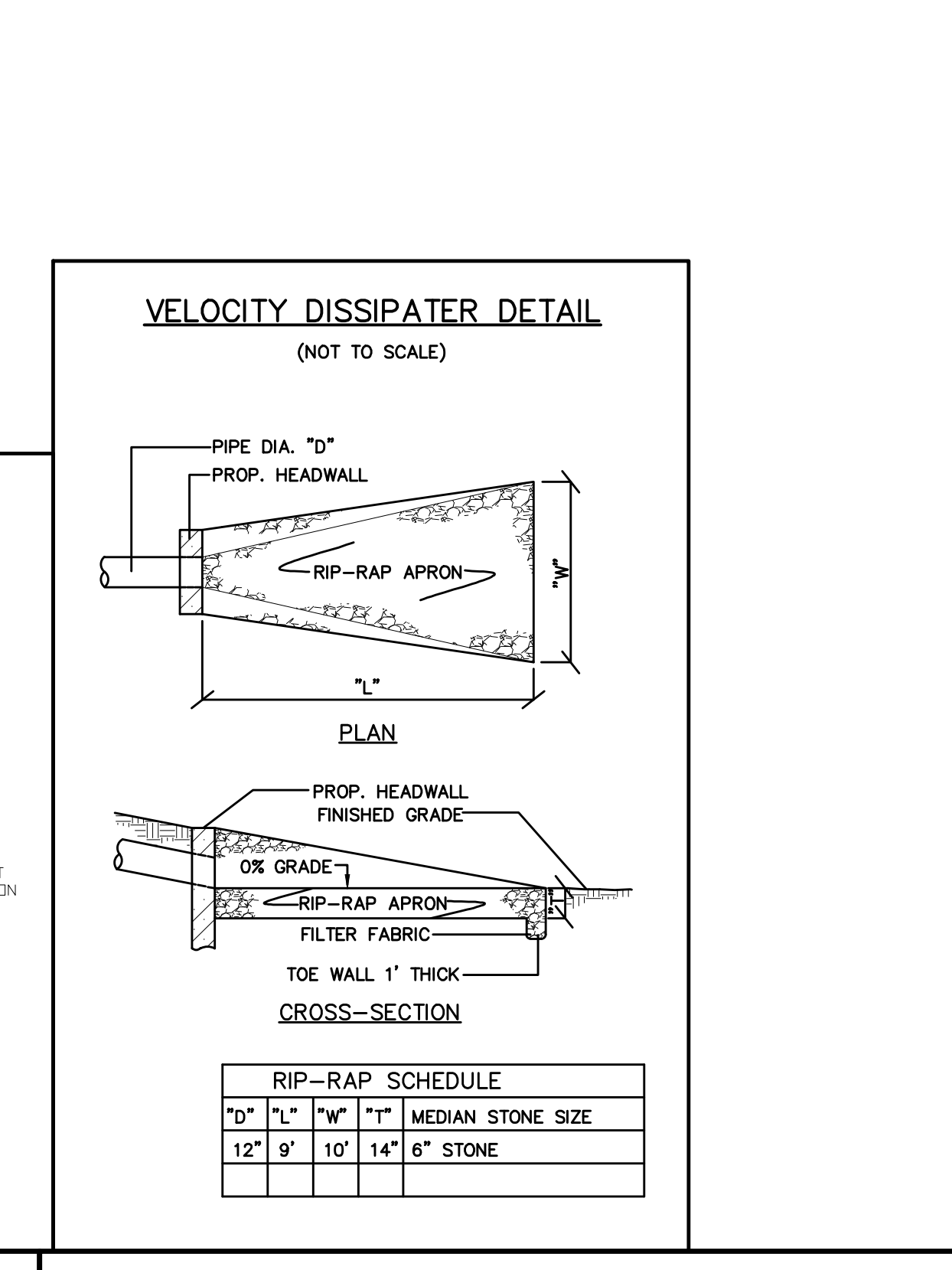
LOT 1 CONSTRUCTION NOTES FOR SUBSURFACE SEWAGE TREATMENT SYSTEMS SERVING SINGLE-FAMILY RESIDENCES

- FILL MUST BE STABILIZED BY ALLOWING THE FILL MATERIAL TO SETTLE NATURALLY FOR A PERIOD OF AT LEAST 6 MONTHS AND INCLUDE AT LEAST ONE (1) FREEZE-THAW CYCLE OR FILL STABILIZATION MAY BE ACHIEVED BY MECHANICAL COMPACTION IN APPROXIMATELY 6 INCH LIFTS TO THE APPROXIMATE DENSITY OF THE UNDISTURBED UNDERLYING SOIL.
- SITE MODIFICATION ACTIVITIES INVOLVING PLACEMENT OF FILL ARE TO BE CONDUCTED DURING RELATIVELY DRY PERIODS TO MINIMIZE SOIL SMEARING AND EXCESSIVE SOIL COMPACTION.
- THE REQUIRED DEPTH OF FILL WITHIN THE SEWAGE TREATMENT SYSTEM AREA IS ONE FOOT WHICH APPROXIMATES TO 130 CUBIC YARDS. FILL SHALL BE RUN OF BANK GRAVEL, SUITABLE FOR SEWAGE ABSORPTION, BE FREE OF FINES OR OTHER UNSUITABLE MATERIAL AND SHALL HAVE AN IN-PLACE PERCOLATION RATE AT LEAST EQUAL TO OR FASTER THAN THE NATURAL UNDERLYING SOIL AFTER THE REQUIRED STABILIZATION PERIOD. THE DESIGN PROFESSIONAL SHALL PERFORM A MINIMUM OF TWO (2) PERCOLATION TESTS IN THE FILL AFTER STABILIZATION IS ACHIEVED.
- FILL SUITABLE FOR SEWAGE ABSORPTION SHOULD CONTAIN NO MORE THAN 5 PERCENT AND PREFERABLY NO MORE THAN 2 PERCENT FINES BY WEIGHT. FINES ARE CLAY AND SILT PARTICLES THAT PASS A #200 SIEVE. NO MORE THAN 10 PERCENT BY WEIGHT OF THE FILL MATERIAL SHOULD PASS A #100 SIEVE.
- THE IMPERVIOUS FILL SHALL BE A DENSE CLAY TYPE SOIL WITH LITTLE OR NO SEWAGE ABSORPTION CAPACITY.
- THIS IS AN ESTIMATE OF MATERIAL IN PLACE, VOLUME OF MATERIALS: (THIS IS AN ESTIMATE OF FILL IN PLACE)  
R.O.B. FILL 130 CY  
UNSPECIFIED FILL 15 CY  
IMPERVIOUS SOIL 0 CY  
TOP SOIL 20 CY



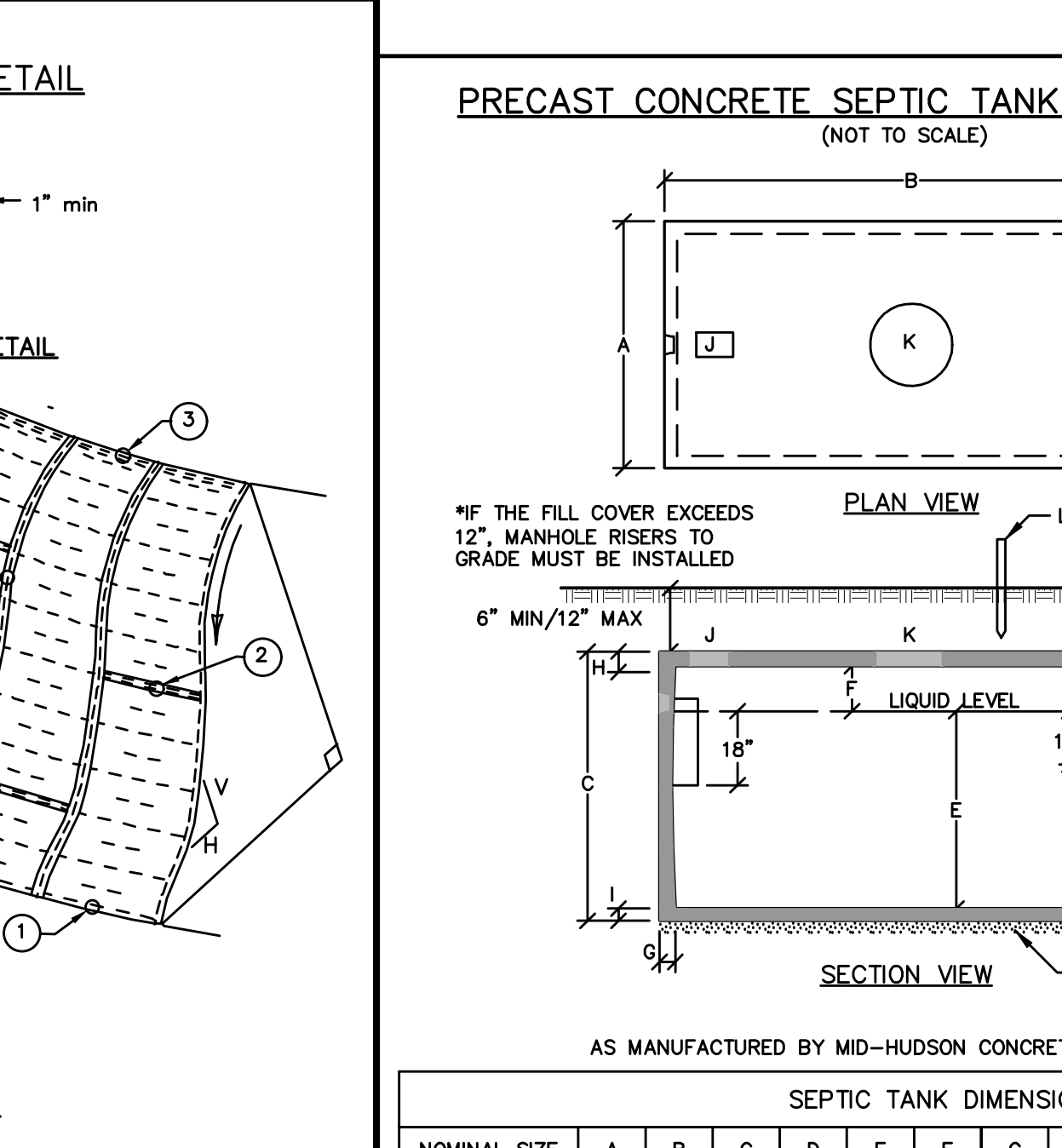
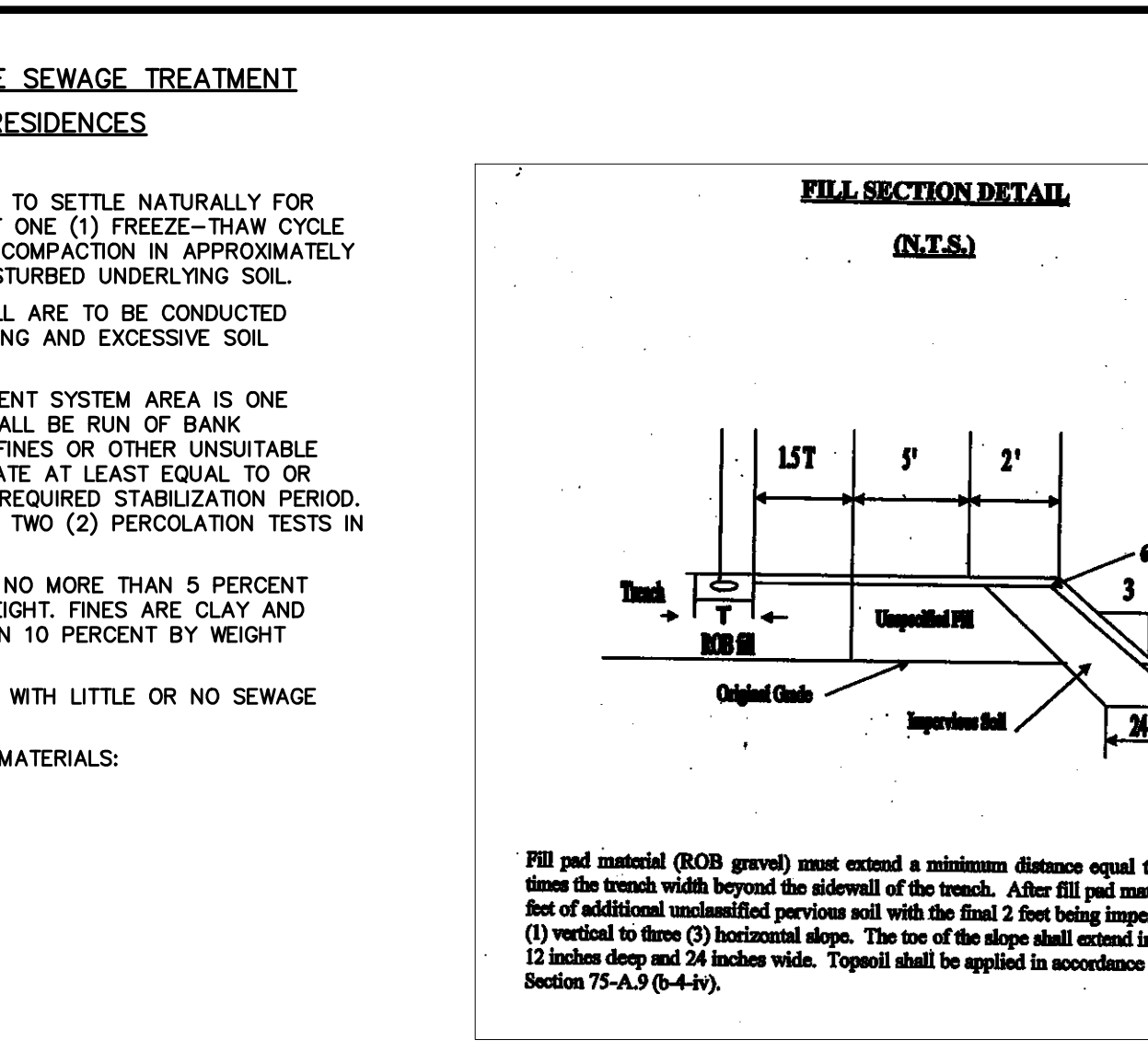
CONSTRUCTION SPECIFICATIONS

- APPLY TO SLOPES GREATER THAN 3H:1V OR WHERE NECESSARY TO AID IN ESTABLISHING VEGETATION.
- APPLY FERTILIZER, LIME AND SEED PRIOR TO PLACING MATTING.
- STAPLES ARE TO BE PLACED ALTERNATELY, IN COLUMNS APPROXIMATELY 2' APART AND IN ROWS APPROXIMATELY 3' APART. APPROXIMATELY 175 STAPLES ARE REQUIRED PER 4'X225' ROLL OF MATERIAL.
- AND 120 STAPLES ARE REQUIRED PER 4'X225' ROLL OF MATERIAL.
- DISTURBED AREAS SHALL BE SMOOTHLY GRADED. EROSION CONTROL MATERIAL SHALL BE PLACED LOOSELY OVER SURFACE. DO NOT DISTURB.
- ALL TERMINAL ENDS AND TRANSVERSE LAPS SHALL BE STAPLED AT APPROXIMATELY 12" INTERVALS.

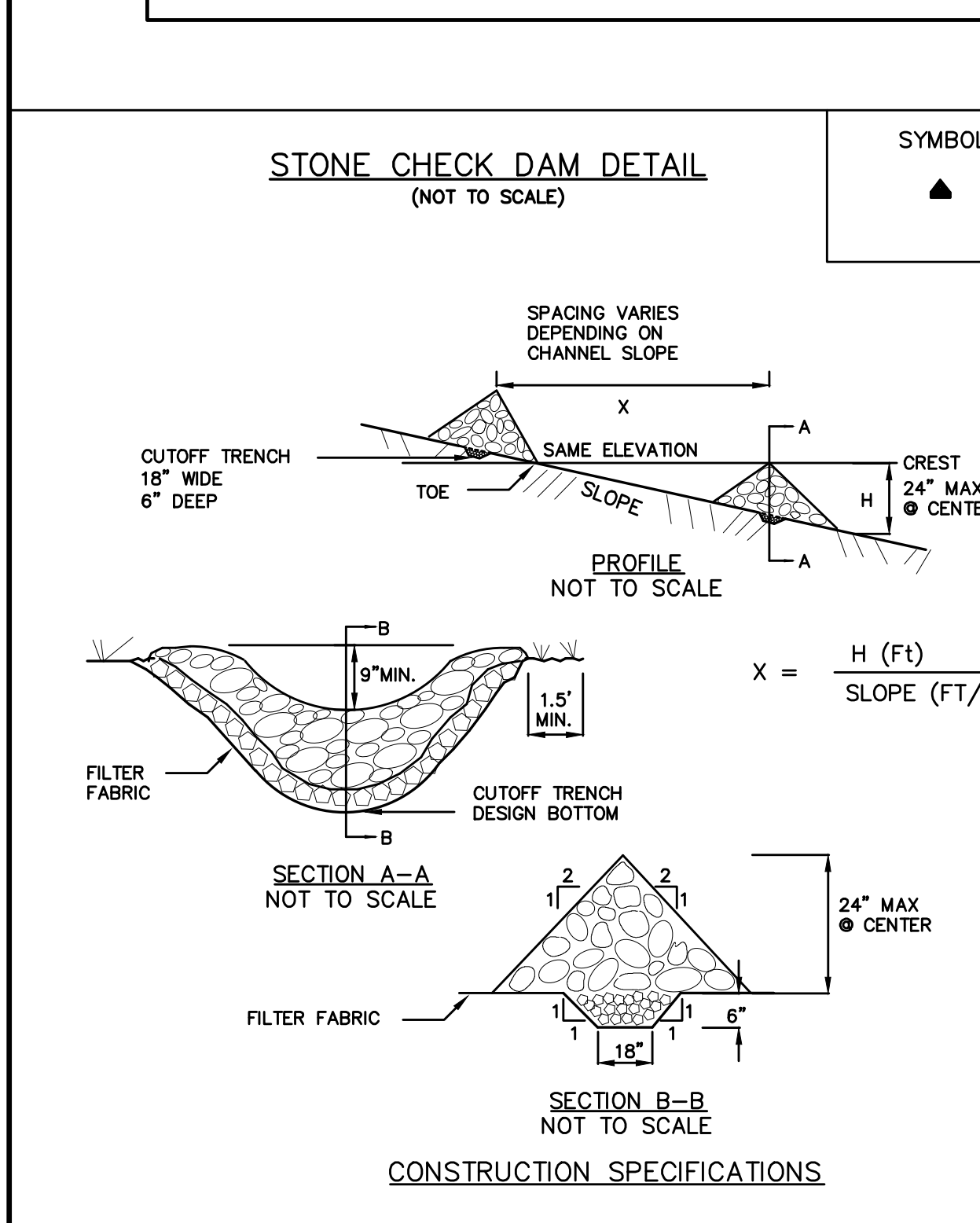
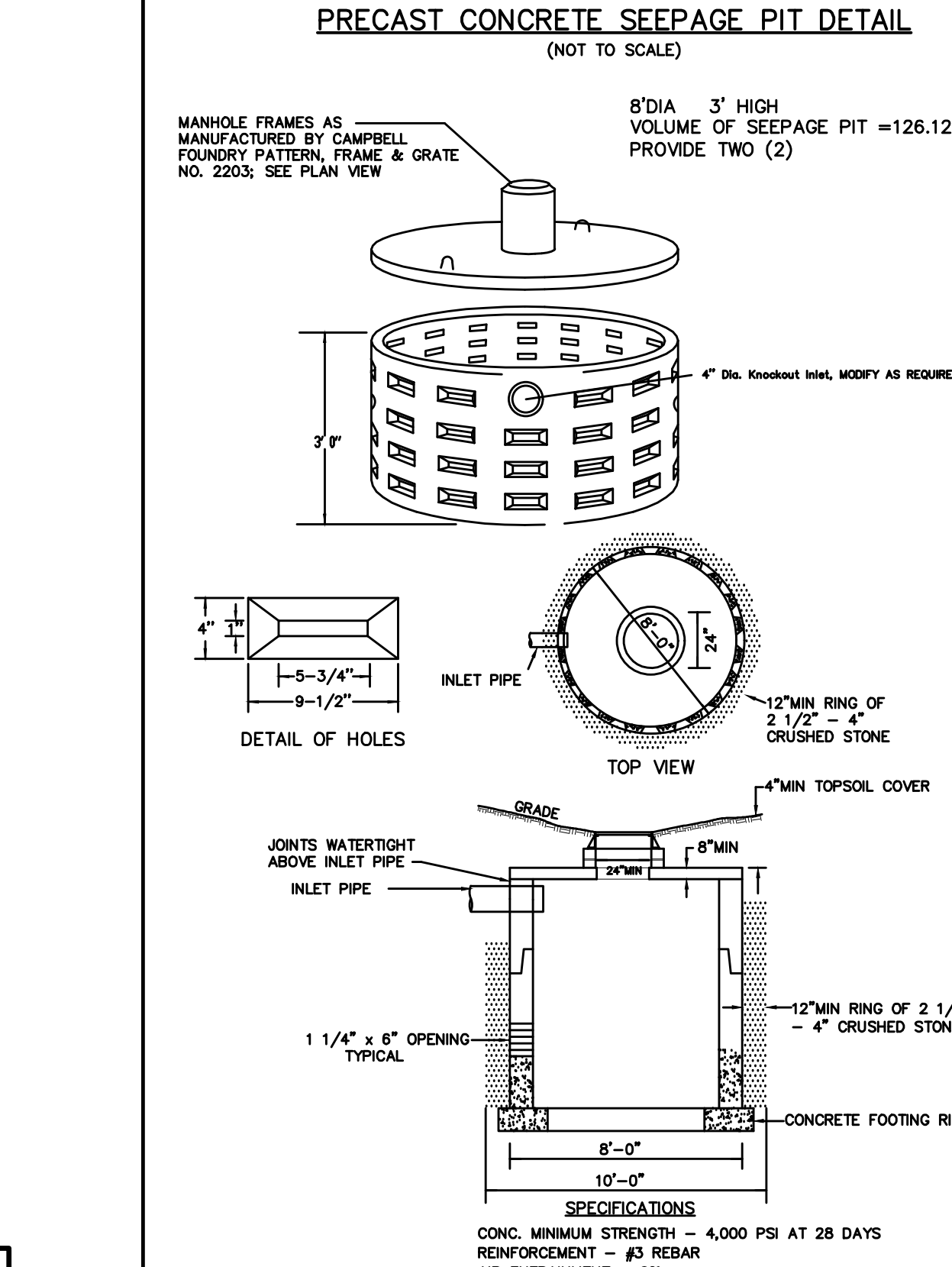


CONSTRUCTION SPECIFICATIONS

- STONE SIZE - USE 2" STONE, OR RECLAIMED OR RECYCLED CONCRETE EQUIVALENT.
- LENGTH - NOT LESS THAN 50 FEET (EXCEPT ON A SINGLE RESIDENCE LOT WHERE A 30 FOOT MINIMUM LENGTH WOULD APPLY).
- THICKNESS - NOT LESS THAN SIX (6) INCHES.
- WIDTH - TWELVE (12) FOOT MINIMUM, BUT NOT LESS THAN THE FULL WIDTH AT POINTS WHERE INGRESS OR EGRESS OCCURS. TWENTY-FOUR (24) FOOT IF SINGLE ENTRANCE TO SITE.
- FILTER CLOTH - WILL BE PLACED OVER THE ENTIRE AREA PRIOR TO PLACING OF STONE.
- SURFACE WATER - ALL SURFACE WATER FLOWING OR DIVERTED TOWARD CONSTRUCTION ENTRANCES SHALL BE PIPED ACROSS THE ENTRANCE. IF PIPING IS IMPRACTICAL, A MOUNTABLE BERM WITH 5:1 SLOPES WILL BE PERMITTED.
- MAINTENANCE - THE ENTRANCE SHALL BE MAINTAINED IN A CONDITION WHICH WILL PREVENT TRACKING OR FLOWING OF SEDIMENT ONTO PUBLIC RIGHTS-OF-WAY. ALL SEDIMENT SPILLED, DROPPED, WASHED OR TRACED ONTO PUBLIC RIGHTS-OF-WAY MUST BE REMOVED IMMEDIATELY.
- WHEN WASHING IS REQUIRED, IT SHALL BE DONE ON AN AREA STABILIZED WITH STONE AND WHICH DRAINS INTO AN APPROVED SEDIMENT TRAPPING DEVICE.
- PERIODIC INSPECTION AND NEEDED MAINTENANCE SHALL BE PROVIDED AFTER EACH RAIN.



NOMINAL SIZE	A	B	C	D	E	F	G	H	I	J	K	L
1,000 GAL	58	102	67	56	48	9	3	5	4	6	18	10X14

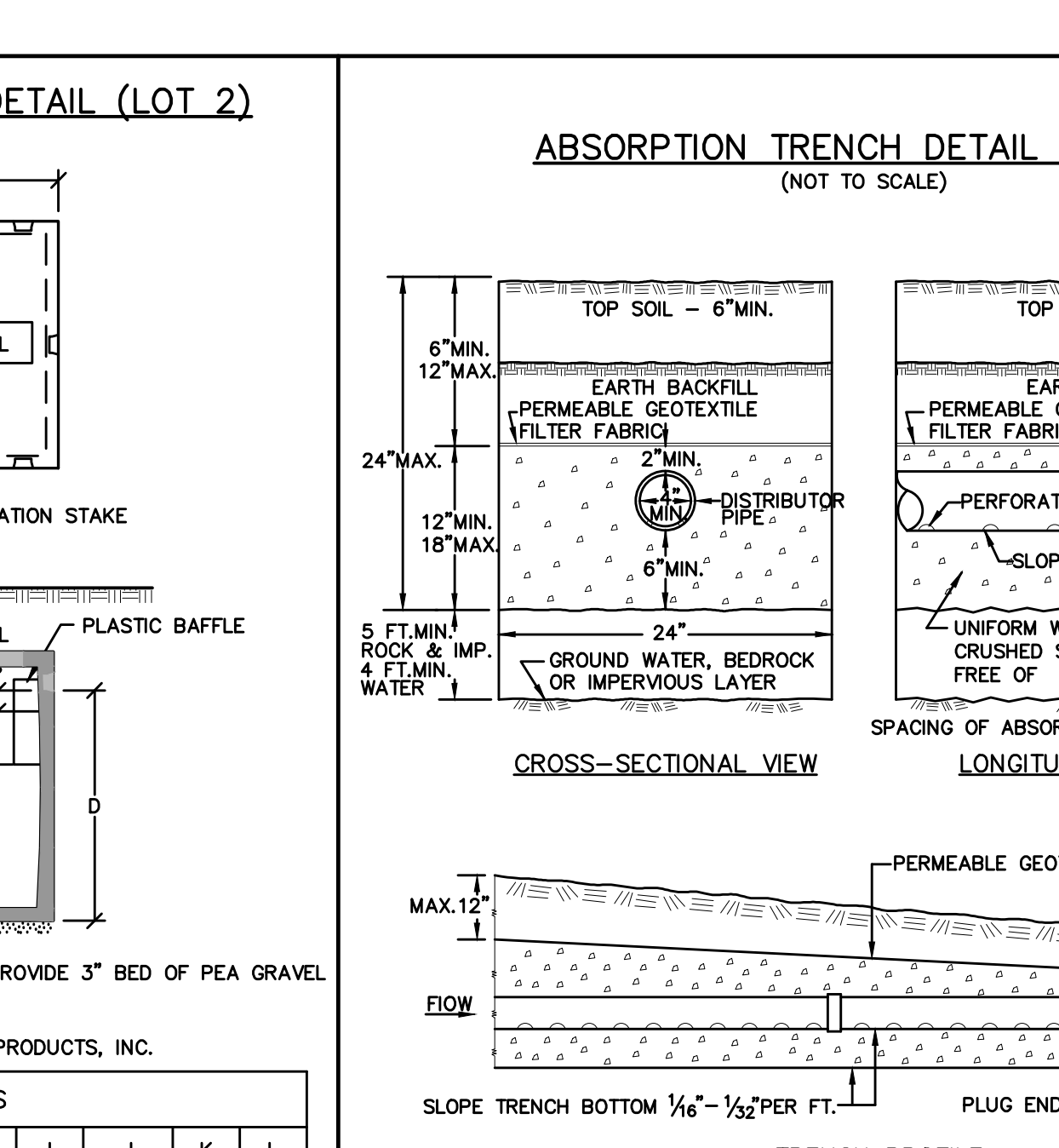


CONSTRUCTION SPECIFICATIONS

- STONE WILL BE PLACED ON A FILTER FABRIC FOUNDATION TO THE LINES, GRADES AND LOCATIONS SHOWN IN THE PLAN.
- SET SPACING OF CHECK DAMS TO ASSUME THAT THE ELEVATIONS OF THE CREST OF THE DOWNSTREAM DAM IS AT THE SAME ELEVATION OF THE TOE OF THE UPSTREAM DAM.
- EXTEND THE STONE A MINIMUM OF 1.5 FEET BEYOND THE DITCH BANKS TO PREVENT CUTTING AROUND THE DAM.
- PROTECT THE CHANNEL DOWNSTREAM OF THE LOWEST CHECK DAM FROM SCOUR AND EROSION WITH STONE OR LINER AS APPROPRIATE.
- ENSURE THAT CHANNEL APPURTENANCES SUCH AS CULVERT ENTRANCES BELOW CHECK DAMS ARE NOT SUBJECT TO DAMAGE OR BLOCKAGE FROM DISPLACED STONE.
- MAXIMUM DRAINAGE AREA 2 ACRES.

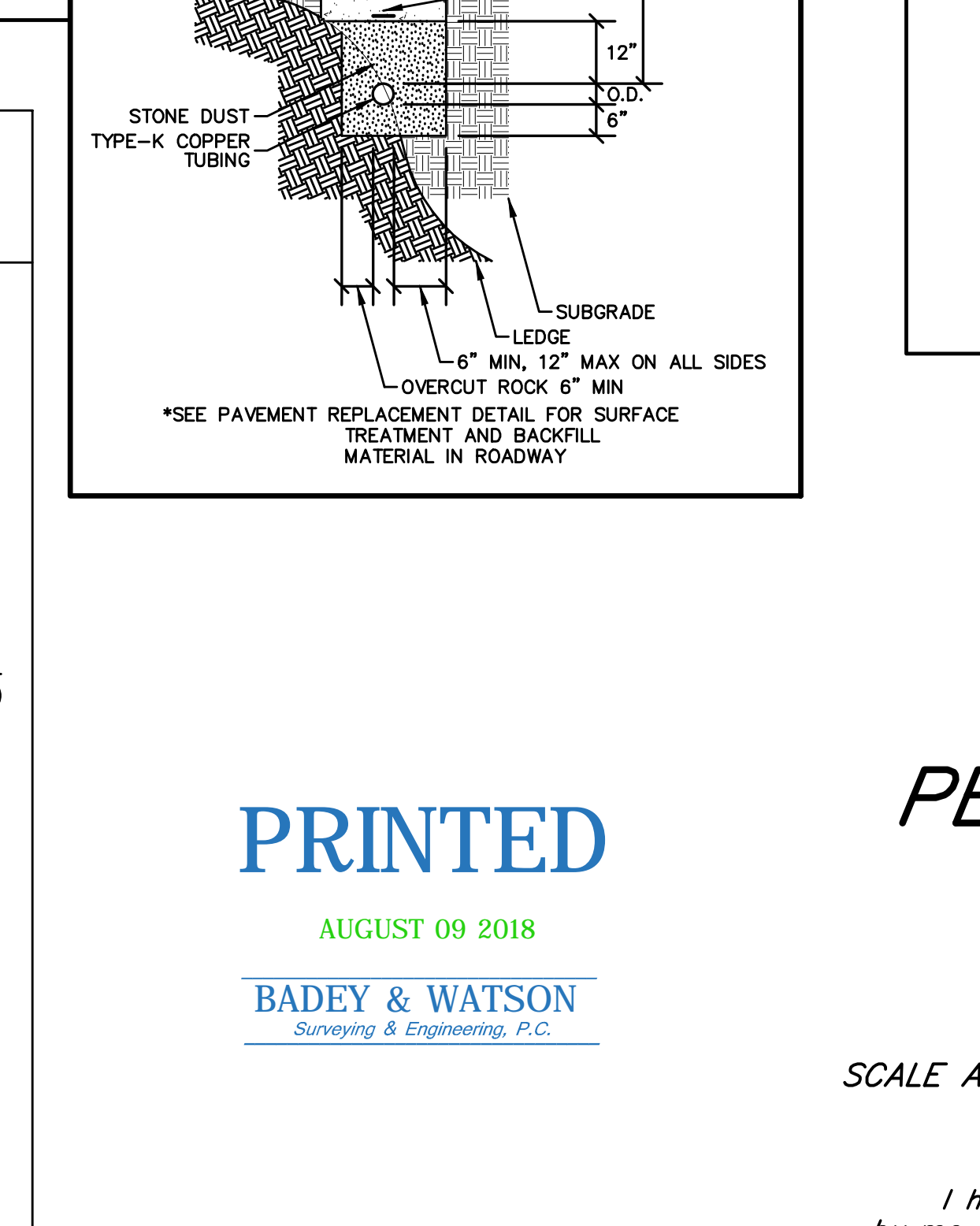
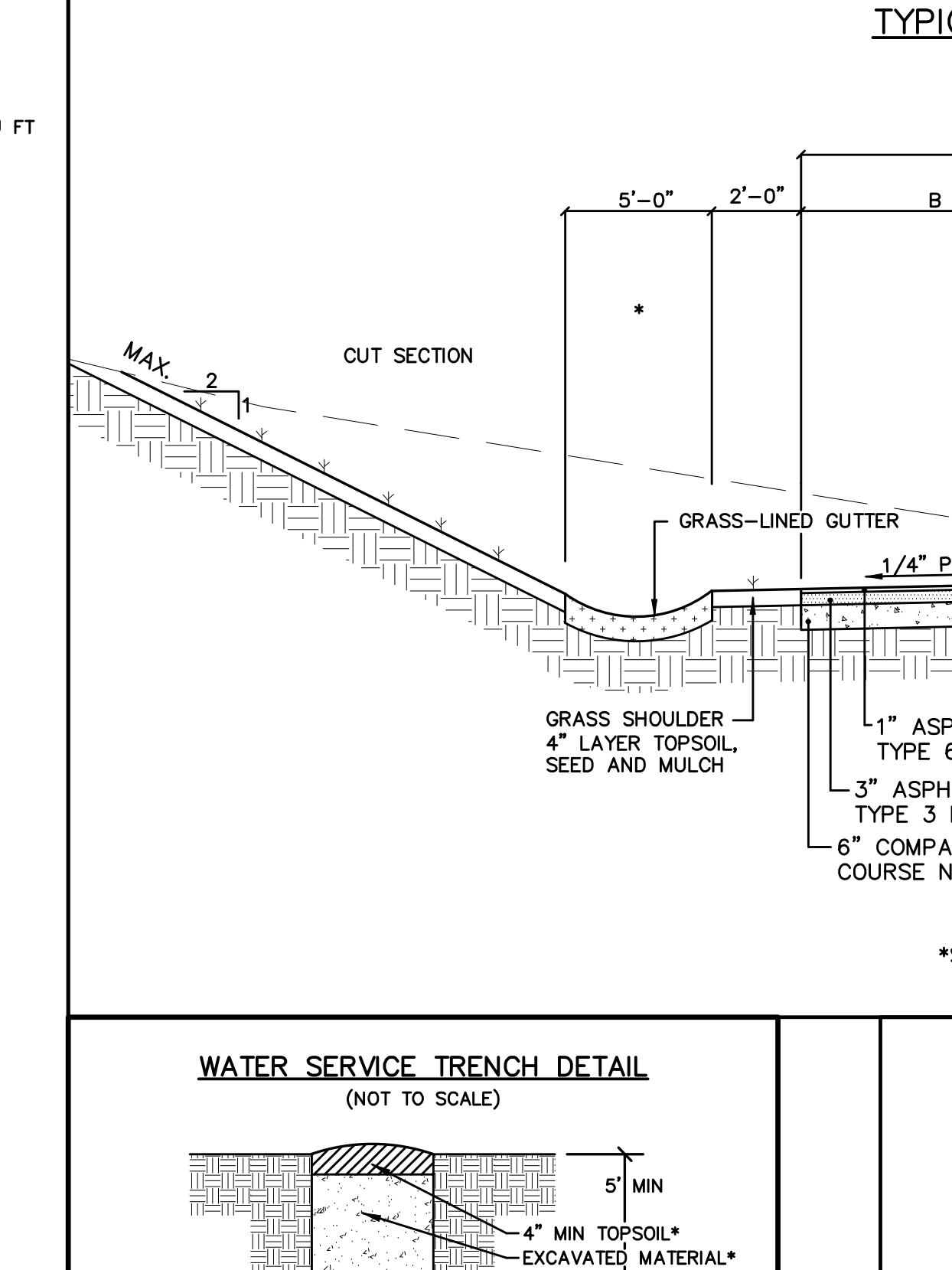
LOT 2 CONSTRUCTION NOTES FOR SUBSURFACE SEWAGE TREATMENT SYSTEMS SERVING SINGLE-FAMILY RESIDENCES

- FILL MUST BE STABILIZED BY ALLOWING THE FILL MATERIAL TO SETTLE NATURALLY FOR A PERIOD OF AT LEAST 6 MONTHS AND INCLUDE AT LEAST ONE (1) FREEZE-THAW CYCLE OR FILL STABILIZATION MAY BE ACHIEVED BY MECHANICAL COMPACTION IN APPROXIMATELY 6 INCH LIFTS TO THE APPROXIMATE DENSITY OF THE UNDISTURBED UNDERLYING SOIL.
- SITE MODIFICATION ACTIVITIES INVOLVING PLACEMENT OF FILL ARE TO BE CONDUCTED DURING RELATIVELY DRY PERIODS TO MINIMIZE SOIL SMEARING AND EXCESSIVE SOIL COMPACTION.
- THE REQUIRED DEPTH OF FILL WITHIN THE SEWAGE TREATMENT SYSTEM AREA IS ONE FOOT WHICH APPROXIMATES TO 70 CUBIC YARDS. FILL SHALL BE RUN OF BANK GRAVEL, SUITABLE FOR SEWAGE ABSORPTION, BE FREE OF FINES OR OTHER UNSUITABLE MATERIAL AND SHALL HAVE AN IN-PLACE PERCOLATION RATE AT LEAST EQUAL TO OR FASTER THAN THE NATURAL UNDERLYING SOIL AFTER THE REQUIRED STABILIZATION PERIOD. THE DESIGN PROFESSIONAL SHALL PERFORM A MINIMUM OF TWO (2) PERCOLATION TESTS IN THE FILL AFTER STABILIZATION IS ACHIEVED.
- FILL SUITABLE FOR SEWAGE ABSORPTION SHOULD CONTAIN NO MORE THAN 5 PERCENT AND PREFERABLY NO MORE THAN 2 PERCENT FINES BY WEIGHT. FINES ARE CLAY AND SILT PARTICLES THAT PASS A #200 SIEVE. NO MORE THAN 10 PERCENT BY WEIGHT OF THE FILL MATERIAL SHOULD PASS A #100 SIEVE.
- THE IMPERVIOUS FILL SHALL BE A DENSE CLAY TYPE SOIL WITH LITTLE OR NO SEWAGE ABSORPTION CAPACITY.
- THIS IS AN ESTIMATE OF MATERIAL IN PLACE, VOLUME OF MATERIALS: (THIS IS AN ESTIMATE OF FILL IN PLACE)  
R.O.B. FILL 70 CY  
UNSPECIFIED FILL 15 CY  
IMPERVIOUS SOIL 15 CY  
TOP SOIL 80 CY



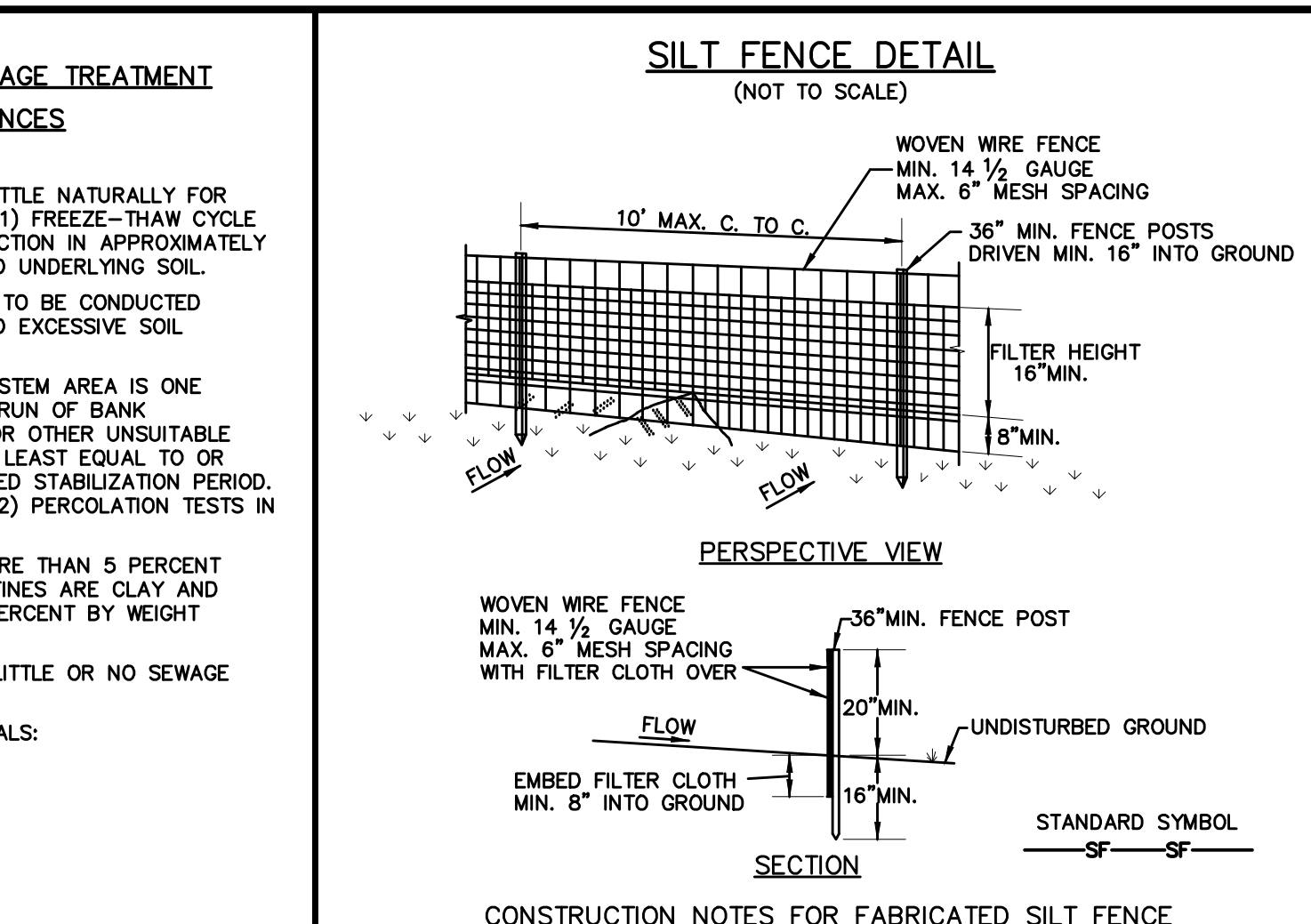
CONSTRUCTION SPECIFICATIONS

- ALL DIMENSIONS ARE IN INCHES
- STEEL REINFORCEMENT: A.S.T.M. A496-A515 GRADE 60-60 KSI
- JOINTS SEALED WITH ASPHALT CEMENT OR EQUAL
- CONCRETE, 4000 PSI @ 28 DAYS, 5% AIR ENTRAINMENT
- EQUIPPED WITH POLYLOK SEALS
- DESIGN LOADING 4-10/3,200 PSI - WALKWAYS, FLOTATION FORCES NOT ACCOUNTED FOR
- MAX. COVER OVER TANK 3' OF EARTH FILL
- MIN 1" CONCRETE COVER OVER REINFORCEMENT
- TANK TO CONFORM WITH ASTM C1227



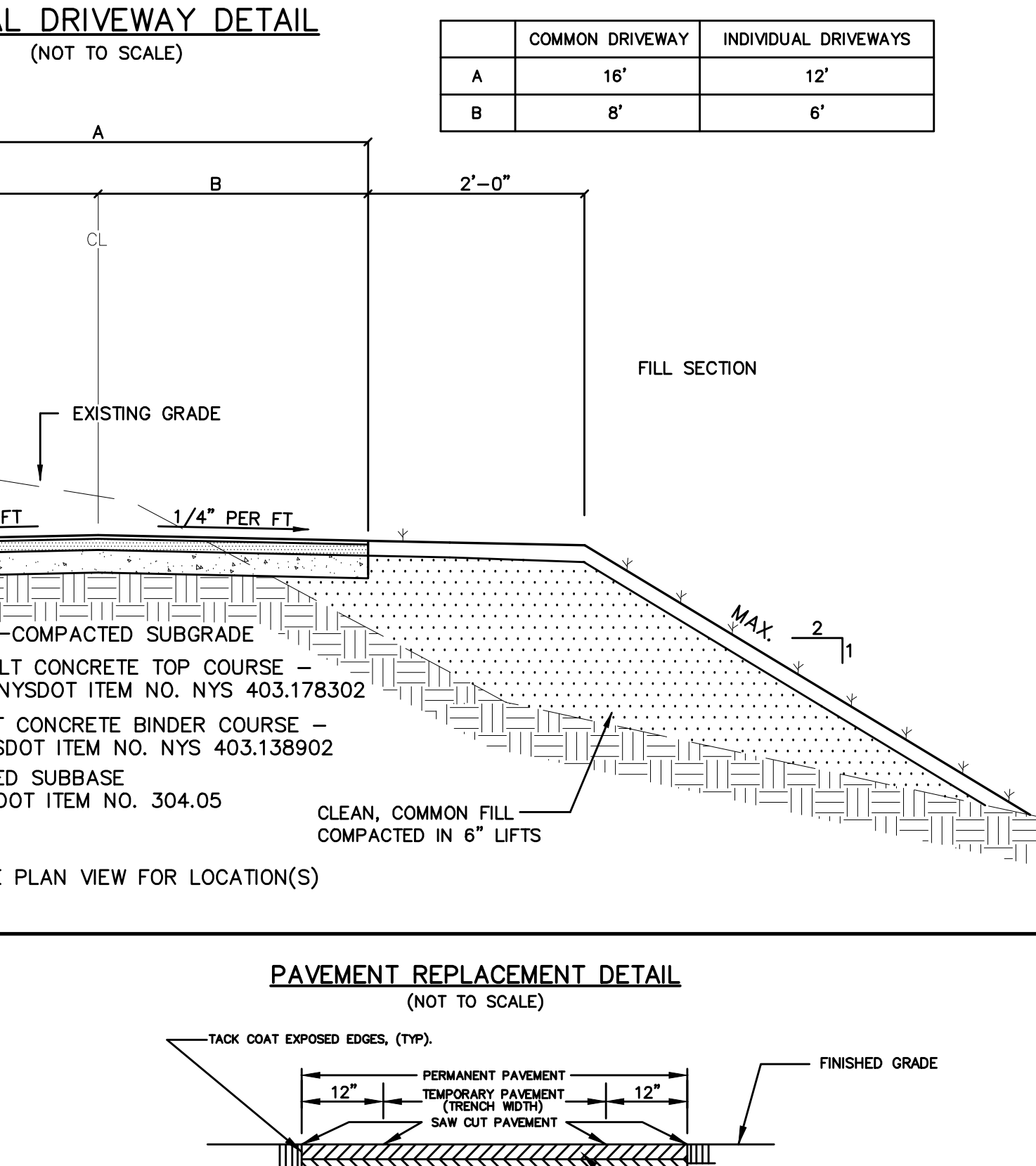
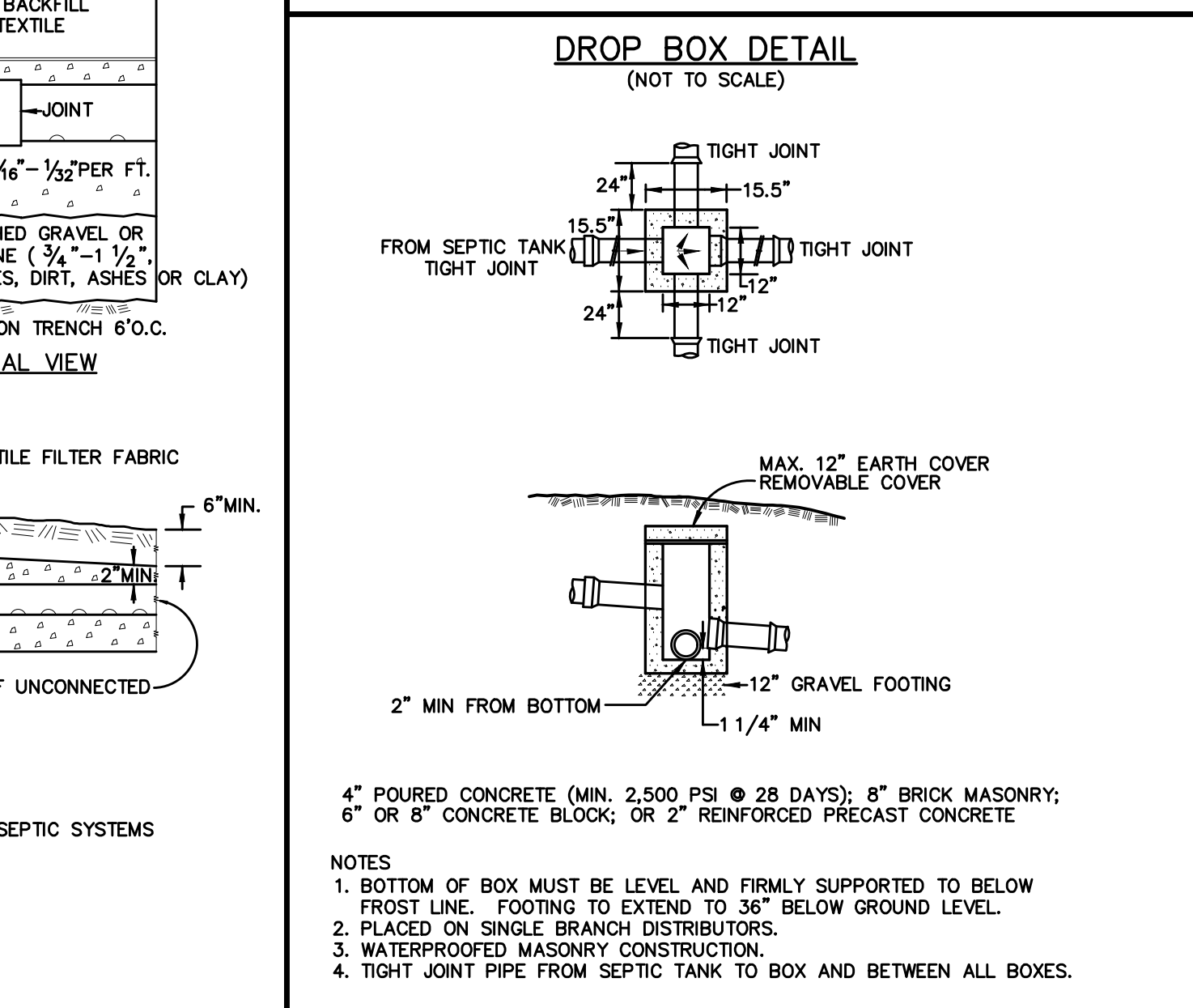
CONSTRUCTION SPECIFICATIONS

- STONE WILL BE PLACED ON A FILTER FABRIC FOUNDATION TO THE LINES, GRADES AND LOCATIONS SHOWN IN THE PLAN.
- SET SPACING OF CHECK DAMS TO ASSUME THAT THE ELEVATIONS OF THE CREST OF THE DOWNSTREAM DAM IS AT THE SAME ELEVATION OF THE TOE OF THE UPSTREAM DAM.
- EXTEND THE STONE A MINIMUM OF 1.5 FEET BEYOND THE DITCH BANKS TO PREVENT CUTTING AROUND THE DAM.
- PROTECT THE CHANNEL DOWNSTREAM OF THE LOWEST CHECK DAM FROM SCOUR AND EROSION WITH STONE OR LINER AS APPROPRIATE.
- ENSURE THAT CHANNEL APPURTENANCES SUCH AS CULVERT ENTRANCES BELOW CHECK DAMS ARE NOT SUBJECT TO DAMAGE OR BLOCKAGE FROM DISPLACED STONE.
- MAXIMUM DRAINAGE AREA 2 ACRES.



CONSTRUCTION NOTES FOR FABRICATED SILT FENCE

- WOVEN WIRE FENCE TO BE FASTENED SECURELY TO FENCE POSTS WITH WIRE TIES OR STAPLES. POSTS SHALL BE STEEL EITHER "1" OR "1 1/2" TYPE OR HARDWOOD.
- FILTER CLOTH TO BE FASTENED SECURELY TO WOVEN WIRE FENCE WITH TIES SPACED EVERY 24" AT TOP AND MID SECTION. FENCE SHALL BE WOVEN WIRE, 12 1/2 GAUGE, 6" MAXIMUM MESH OPENING.
- WHEN TWO SECTIONS OF FILTER CLOTH ADJOIN EACH OTHER THEY SHALL BE OVERLAPPED BY SIX INCHES AND FOLDED. FILTER CLOTH SHALL BE EITHER FILTER X, WARM 100L, STABILUNA 100H, OR APPROVED EQUIVALENT.
- PREFABRICATED UNITS SHALL BE GEOTAP, ENVIROFENCE, OR APPROVED EQUIVALENT.
- MAINTENANCE SHALL BE PERFORMED AS NEEDED AND MATERIAL REMOVED WHEN "BULGES" DEVELOP IN THE SILT FENCE.



SHEET 4 OF 5  
DETAILS  
**PRELIMINARY**  
SUBDIVISION PLAT  
FOR  
**PENNELOPE HEDGES**  
SITUATE IN THE  
**CITY OF BEACON**  
**DUTCHESS COUNTY**  
**NEW YORK**

SCALE AS NOTED APRIL 19, 2018

I hereby certify that this subdivision plat was prepared by me, and was made from an actual survey completed by me in May of 2014. For latest issue date see revision box.

Gary LaTour, L.S.

**PRELIMINARY**  
by  
NEW YORK STATE LICENSED LAND SURVEYOR  
LICENSE NO. 49457

FILE No. 83-9177