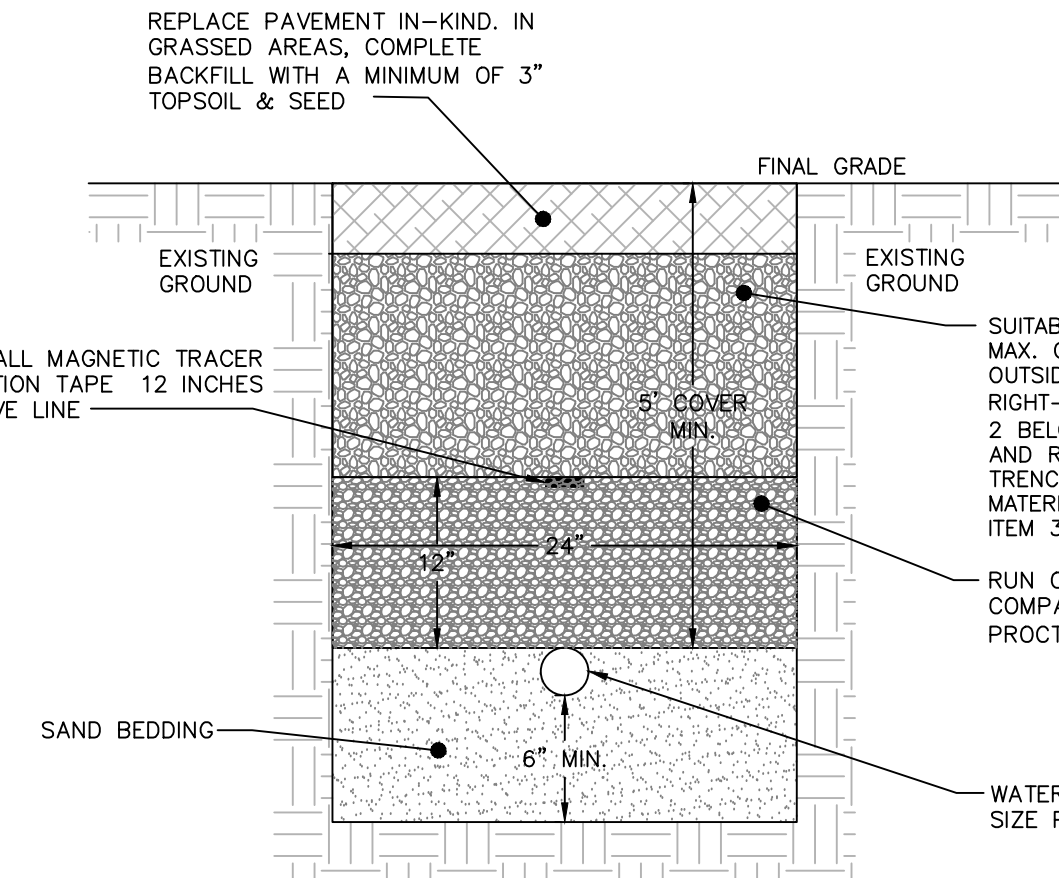


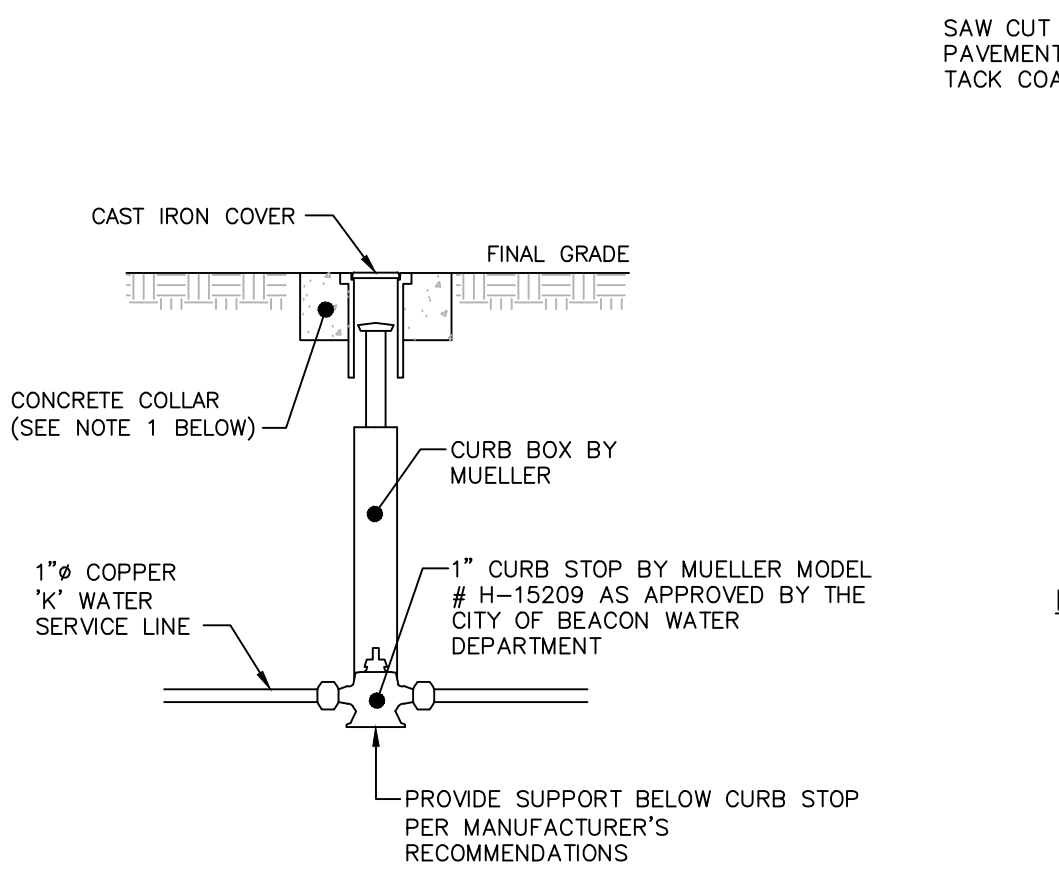
- NOTES:
1. MATERIALS AND METHODS OF CONSTRUCTION SHALL BE IN CONFORMANCE WITH THE NEW YORK STATE DEPARTMENT OF TRANSPORTATION (NYSDOT) STANDARD SPECIFICATIONS FOR CONSTRUCTION AND MATERIALS, LATEST REVISION.
 2. SUBGRADE SHALL NOT INCLUDE FROZEN MATERIALS, DEBRIS, ORGANIC MATERIALS, LARGE STONES OR OTHER UNSUITABLE MATERIALS.
 3. TACK COAT WHEN SPECIFIED OR CALLED OUT IN THESE DRAWINGS OR REQUIRED BY THE REFERENCED SPECIFICATIONS SHALL CONFORM WITH SECTION 407-TACK COAT OF THE ABOVE REFERENCED NYSDOT STANDARD SPECIFICATIONS.
 4. WHERE IT IS NECESSARY TO PLACE FILL FOR PURPOSES OF BRINGING THE SUBGRADE ELEVATION UP TO A SPECIFIED GRADE, THE FILL MATERIAL PLACED SHALL BE IN CONFORMANCE WITH SECTION 203-EXCAVATION AND EMBANKMENT OF THE ABOVE REFERENCED NYSDOT STANDARD SPECIFICATIONS.
 5. IT IS EXPECTED THAT THE EXISTING SITE SUB-SOILS ARE SUITABLE. IF UNSUITABLE SOILS ARE ENCOUNTERED DURING CONSTRUCTION, THE CONTRACTOR SHALL CONTACT THE ENGINEER FOR POSSIBLE MODIFICATIONS TO THE PAVEMENT DETAIL.
 6. GEOTECHNICAL FABRIC TO BE PROVIDED AS ORDERED BY ENGINEER BASED ON ENCOUNTERED SITE CONDITIONS.

PARKING LOT PAVEMENT SECTION DETAIL
NOT TO SCALE



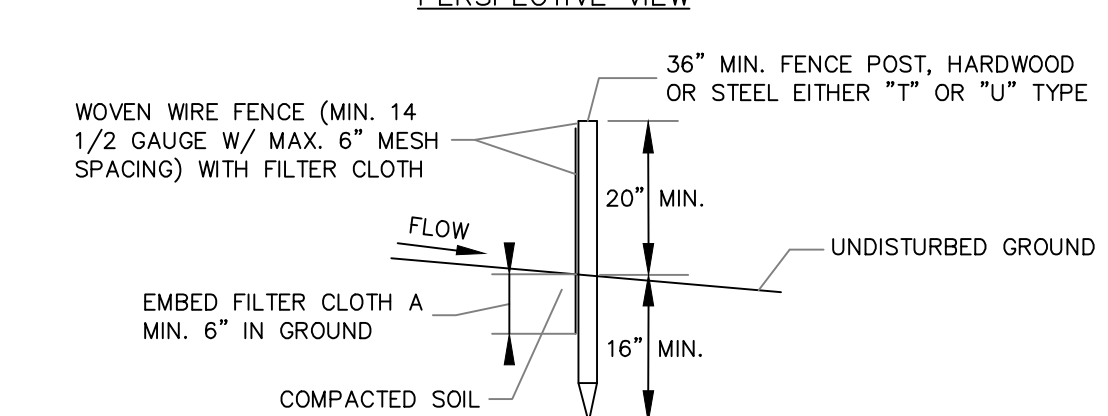
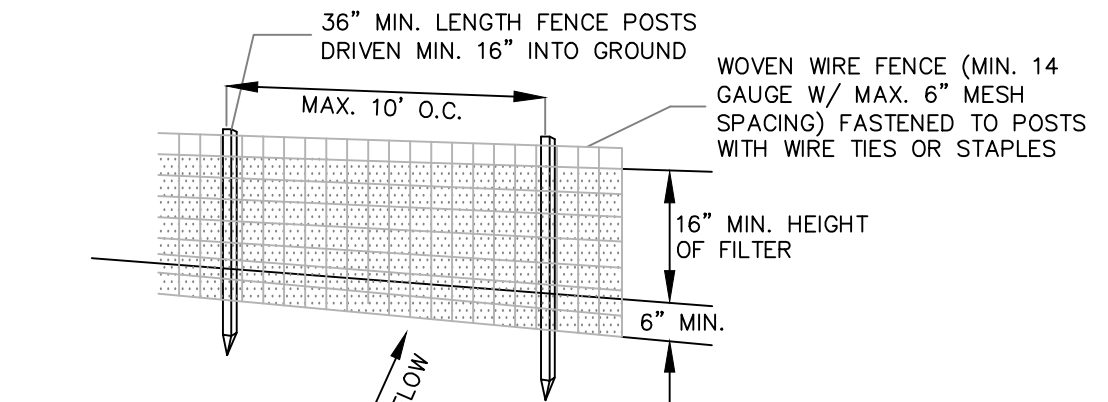
- NOTES:
1. EXCAVATION AND TRENCHING SHALL MEET ALL OSHA REQUIREMENTS.
 2. SUITABLE RUN OF TRENCH SHALL NOT INCLUDE FROZEN MATERIALS, DEBRIS, ORGANIC MATERIALS, ENLARGED PARTICLES, LARGE STONES OR OTHER UNSUITABLE MATERIALS. IF THE RUN OF TRENCH MATERIAL IS FOUND TO BE UNSUITABLE, A SUITABLE BACKFILL MATERIAL SHALL BE IMPORTED AND USED.
 3. IN AREAS WHERE 5' COVER REQUIREMENT CANNOT BE MET, THE CONTRACTOR SHALL PROVIDE PIPE INSULATION TO PREVENT FREEZING.

WATER SERVICE LINE TRENCH DETAIL
NOT TO SCALE



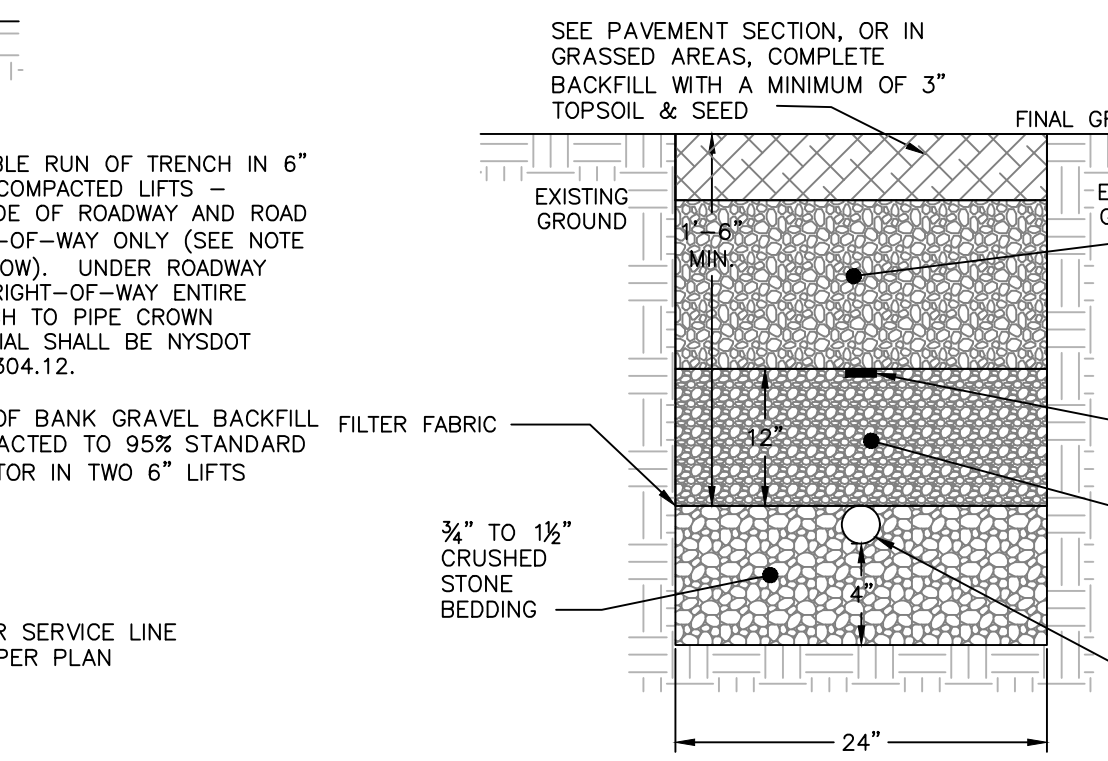
- NOTES:
1. CONCRETE COLLAR TO BE PROVIDED IN AREAS THAT ARE NOT PAVED. THE COLLAR SHALL BE 6" FROM THE COVER AND SHALL EXTEND 6" BELOW FINAL GRADE.
 2. CURB STOP TO BE COMPRESSION TYPE BY MUELLER.
 3. AREA AROUND CURB BOX TO BE BACKFILLED WITH GRAVELLY MATERIAL.

WATER SHUT-OFF VALVE DETAIL
NOT TO SCALE



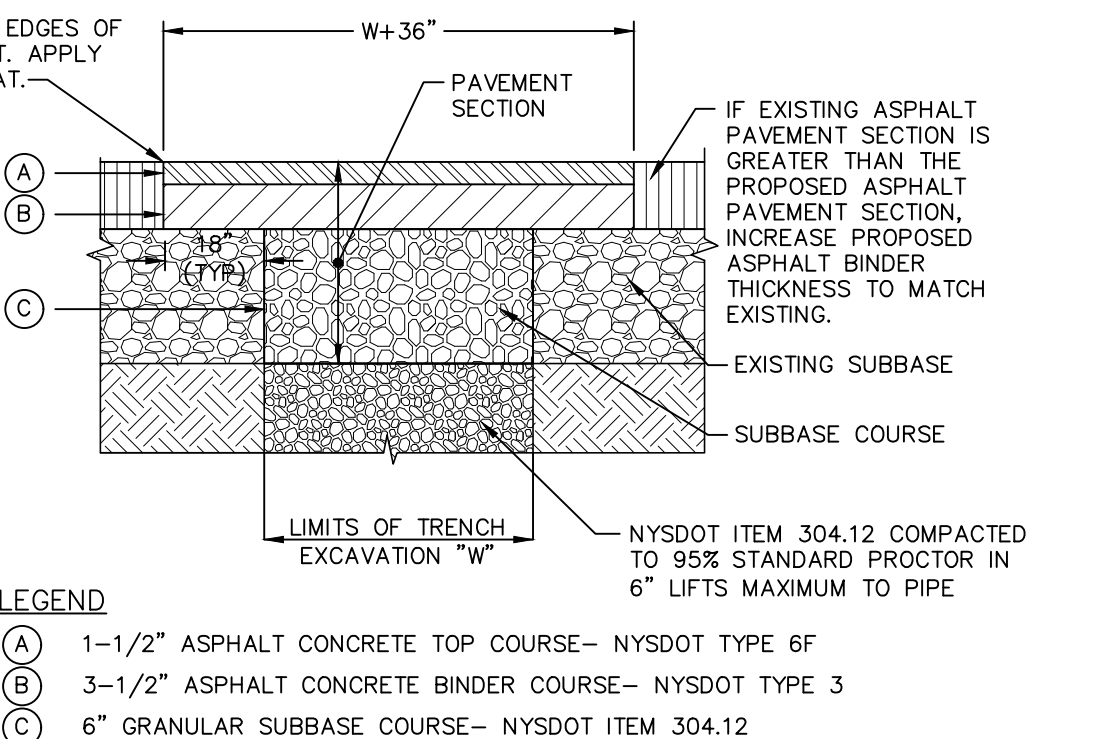
- NOTES:
1. FILTER CLOTH TO BE FASTENED SECURELY TO WOVEN WIRE FENCE WITH TIES SPACED EVERY 24" AT TOP AND MID SECTION.
 2. WHEN TWO SECTIONS OF FILTER CLOTH ADJOIN EACH OTHER THEY SHALL BE OVER-LAPPED BY SIX INCHES AND FOLDED. FILTER CLOTH SHALL BE EITHER FILTER X, MIRAFI 100X, STABILINKA T140N OR APPROVED EQUAL.
 3. PREFABRICATED UNITS SHALL BE GEOTAP, ENVIROFENCE OR APPROVED EQUAL.
 4. MAINTENANCE SHALL BE PERFORMED AS NEEDED AND MATERIAL REMOVED WHEN "BULGES" DEVELOP IN THE SILT FENCE.

SILT FENCE DETAIL
NOT TO SCALE



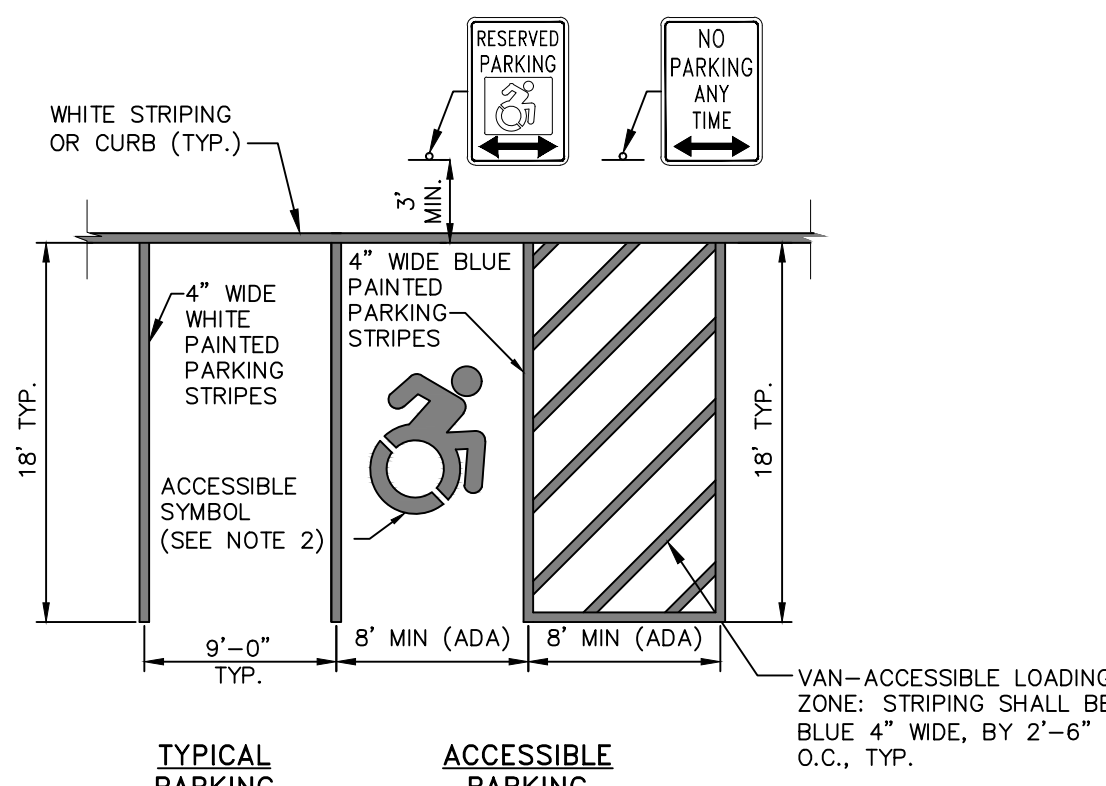
- NOTES:
1. EXCAVATION AND TRENCHING SHALL MEET ALL OSHA REQUIREMENTS.
 2. SUITABLE RUN OF TRENCH SHALL NOT INCLUDE FROZEN MATERIALS, DEBRIS, ORGANIC MATERIALS, LARGE STONES OR OTHER UNSUITABLE MATERIALS. IF THE RUN OF TRENCH MATERIAL IS FOUND TO BE UNSUITABLE, A SUITABLE BACKFILL MATERIAL SHALL BE IMPORTED AND USED.

SANITARY SEWER SERVICE LINE TRENCH DETAIL
NOT TO SCALE



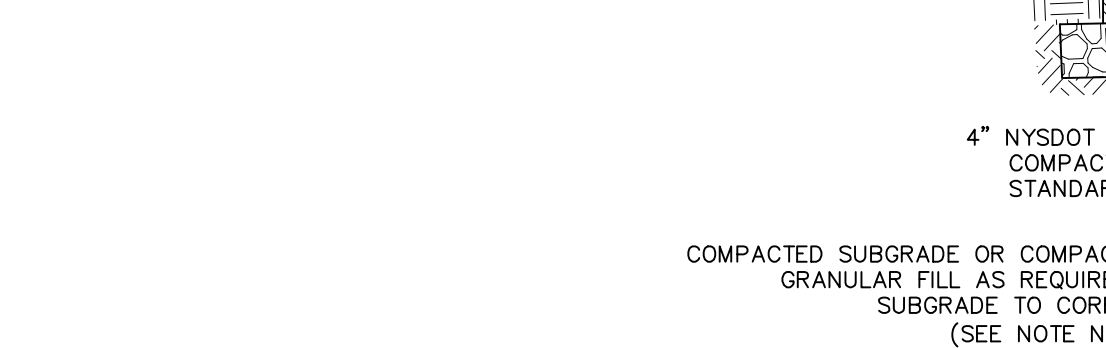
- LEGEND
- (A) 1-1/2" ASPHALT CONCRETE TOP COURSE- NYSDOT TYPE 6F
 - (B) 3-1/2" ASPHALT CONCRETE BINDER COURSE- NYSDOT TYPE 3
 - (C) 6" GRANULAR SUBBASE COURSE- NYSDOT ITEM 304.12
- NOTES:
1. SAW CUT MIN. 18" BEYOND EXCAVATION WITH SMOOTH EDGES.
 2. 18" JOINT BETWEEN EXISTING AND NEW TOP COURSE TO BE MILLED. JOINT TO BE SEALED WITH POLYMER MODIFIED SEALER.
 3. FURNISH, PLACE, AND COMPACT SUBBASE.
 4. TACK COAT IN ACCORDANCE WITH NYSDOT STANDARD SPEC.
 5. FURNISH AND PLACE ASPHALT CONCRETE PAVEMENT AS SPECIFIED.
 6. THE THICKNESS OF THE ASPHALT SHALL BE INCREASED IF IT IS FOUND THAT THE OVERALL THICKNESS OF THE ASPHALT SECTION IN THE ROAD IS THICKER THAN THE PROPOSED DIMENSIONS PROVIDED IN THIS DETAIL.

PAVEMENT RESTORATION DETAIL
NOT TO SCALE



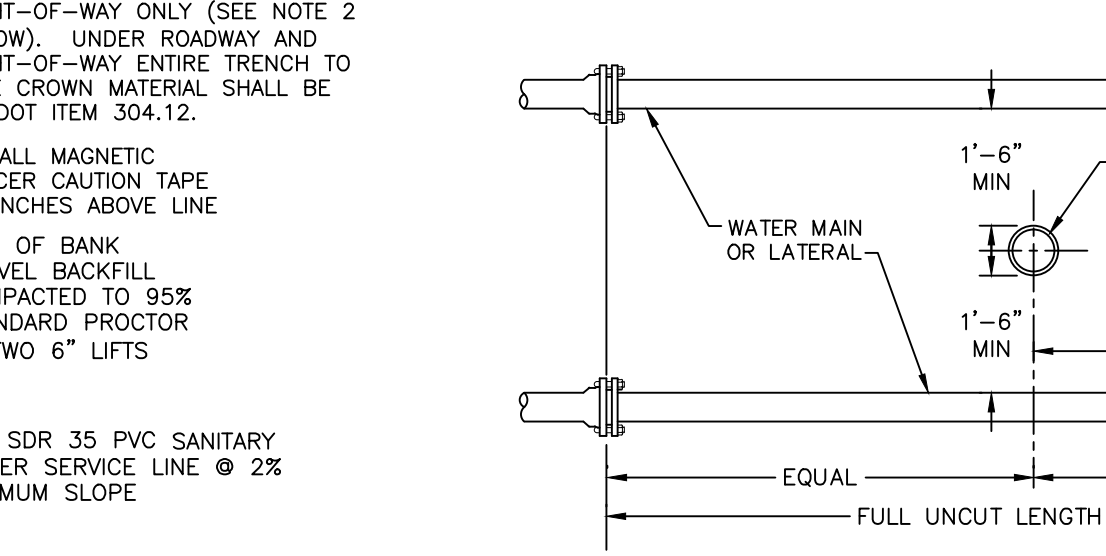
- NOTES:
1. ALL DIMENSIONS SUBJECT TO CURRENT MUNICIPALITY ZONING AND SITE REGULATIONS.
 2. PAINTED ACCESSIBLE SYMBOL TO BE IN ACCORDANCE WITH NYSDOT AND ADA STANDARDS.
 3. IF PARKING ADJUTS A SIDEWALK, THEN THE REGULATORY SIGNS SHALL BE PLACED BEHIND THE SIDEWALK.

PARKING AND STRIPING DETAIL
NOT TO SCALE

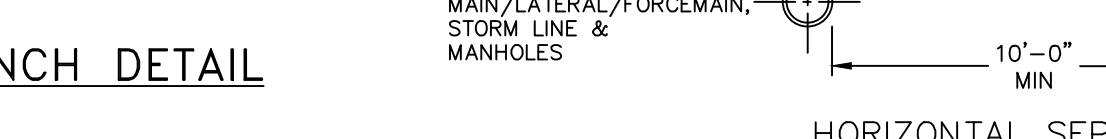


- NOTES:
1. MATERIAL AND METHODS OF CONSTRUCTION SHALL BE IN CONFORMANCE WITH THE NEW YORK STATE DEPARTMENT OF TRANSPORTATION (NYSDOT) STANDARD SPECIFICATIONS FOR CONSTRUCTION AND MATERIALS, LATEST REVISION.
 2. SUBBASE MATERIAL SHALL CONFORM WITH SECTION 304 OF THE ABOVE REFERENCED NYSDOT STANDARD SPECIFICATIONS.
 3. WHERE IT IS NECESSARY TO PLACE FILL FOR PURPOSE OF BRINGING THE SUBGRADE ELEVATION UP TO A SPECIFIED GRADE, THE FILL MATERIAL PLACED SHALL BE IN CONFORMANCE WITH SECTION 203-EXCAVATION AND EMBANKMENT OF THE ABOVE REFERENCED NYSDOT STANDARD SPECIFICATIONS.

ASPHALT SIDEWALK DETAIL
NOT TO SCALE

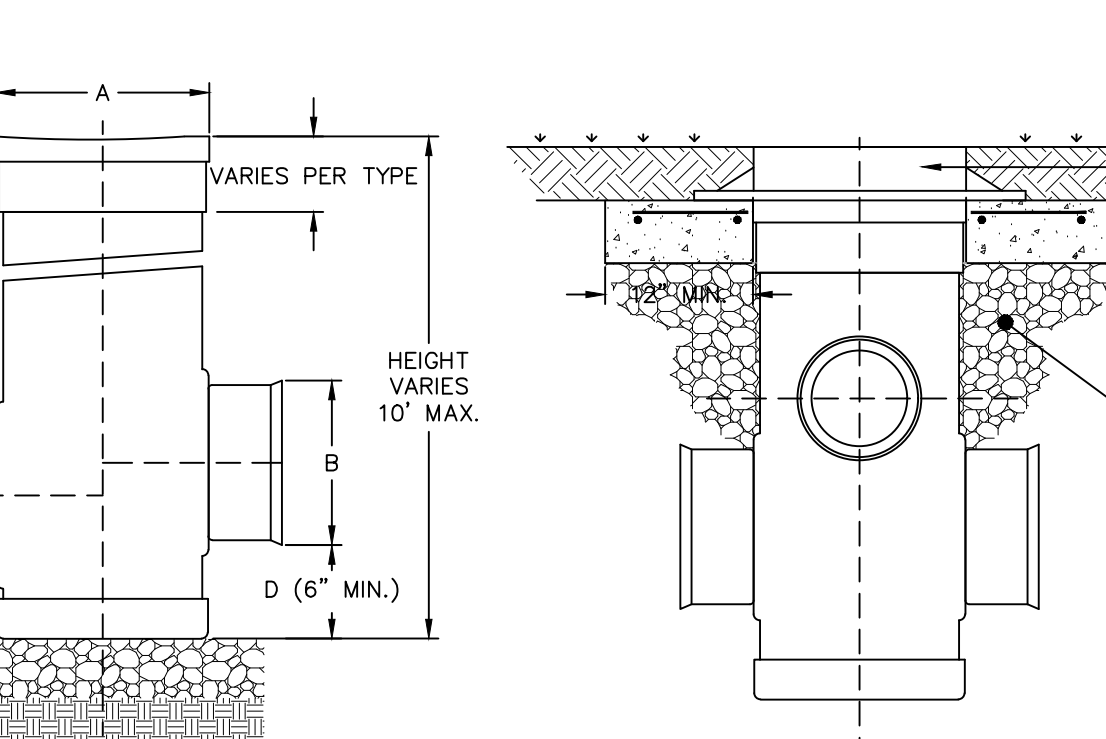


VERTICAL SEPARATION
NOT TO SCALE



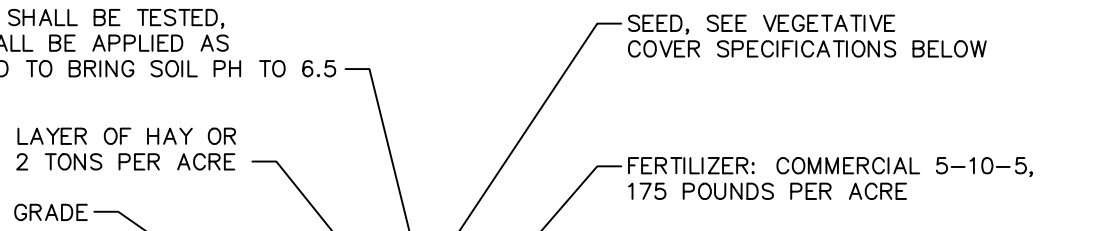
- NOTE:
- NO DEVIATION IN THE SEPARATION REQUIREMENTS WILL BE PERMITTED WITHOUT THE EXPRESS APPROVAL OF THE DUTCHESS COUNTY DEPARTMENT OF HEALTH AND THE CITY OF BEACON. CONCRETE ENCASUREMENT OF WATERLINE OR OFFSETTING OF WATERLINE SHALL BE REQUIRED WHERE SEPARATION DISTANCES CANNOT BE MAINTAINED.

WATER LINE SEPARATION DETAIL
NOT TO SCALE



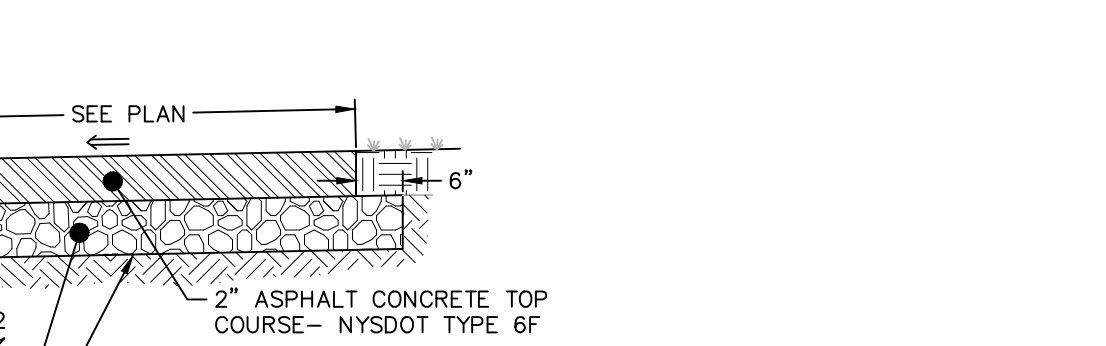
- NOTES:
1. IN-LINE DRAINS TO BE USED TO CONVEY ROOF DRAINAGE TO THE OUTFALLS, AS SHOWN ON THE GRADING & UTILITY PLAN.

ROOF LEADER DRAIN BASIN DETAIL
NOT TO SCALE



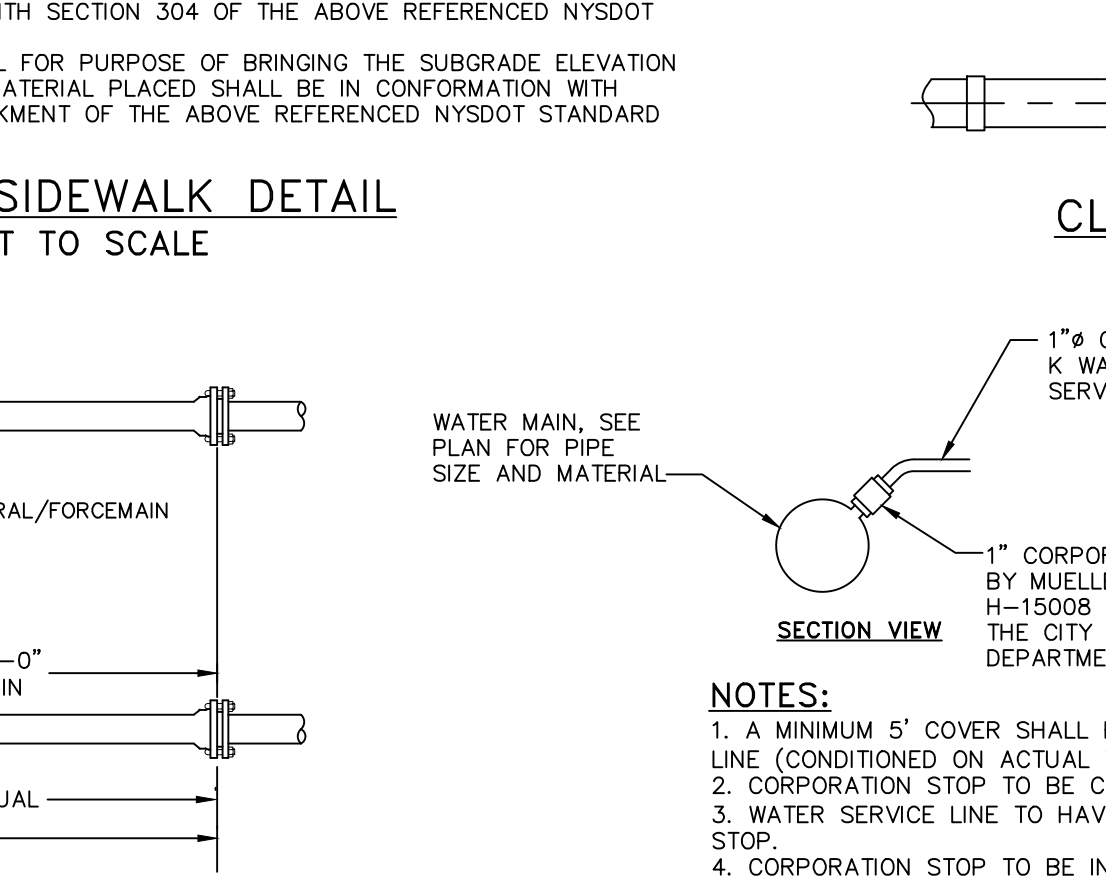
- NOTES:
1. TOPSOIL, SEED, MULCH, AND FERTILIZE DISTURBED SOIL AREAS THAT WILL BE LEFT EXPOSED FOR 14 DAYS OR MORE.
 2. SEED MIXTURE FOR USE ON LAWNS IN SUNNY AREAS:
65% KENTUCKY BLUE GRASS BLEND
20% PERENNIAL RYEGRASS
15% FINE FESCUE
 3. SEED MIXTURE FOR USE IN SHADY AREAS:
80% BLEND OF SHADE TOLERANT KENTUCKY BLUEGRASS
20% FINE FESCUE
 4. SEED BETWEEN APRIL 1ST AND MAY 15TH OR AUGUST 15TH AND OCTOBER 15TH. SEEDING MAY OCCUR BETWEEN MAY 15TH AND AUGUST 15TH IF ADEQUATE IRRIGATION IS PROVIDED.
 5. TOPSOIL SHALL HAVE AT LEAST 6% BY WEIGHT OF FINE TEXTURED STABLE ORGANIC MATERIAL, AND NO GREATER THAN 20%. TOPSOIL SHALL HAVE NOT LESS THAN 20% FINE TEXTURED MATERIAL (PASSING THE NO. 200 SIEVE) AND NOT MORE THAN 15% CLAY.

TOPSOIL, SEED AND MULCH DETAIL
NOT TO SCALE



- NOTES:
1. MATERIAL AND METHODS OF CONSTRUCTION SHALL BE IN CONFORMANCE WITH THE NEW YORK STATE DEPARTMENT OF TRANSPORTATION (NYSDOT) STANDARD SPECIFICATIONS FOR CONSTRUCTION AND MATERIALS, LATEST REVISION.
 2. SUBBASE MATERIAL SHALL CONFORM WITH SECTION 304 OF THE ABOVE REFERENCED NYSDOT STANDARD SPECIFICATIONS.
 3. WHERE IT IS NECESSARY TO PLACE FILL FOR PURPOSE OF BRINGING THE SUBGRADE ELEVATION UP TO A SPECIFIED GRADE, THE FILL MATERIAL PLACED SHALL BE IN CONFORMANCE WITH SECTION 203-EXCAVATION AND EMBANKMENT OF THE ABOVE REFERENCED NYSDOT STANDARD SPECIFICATIONS.

SECTION VIEW
NOT TO SCALE

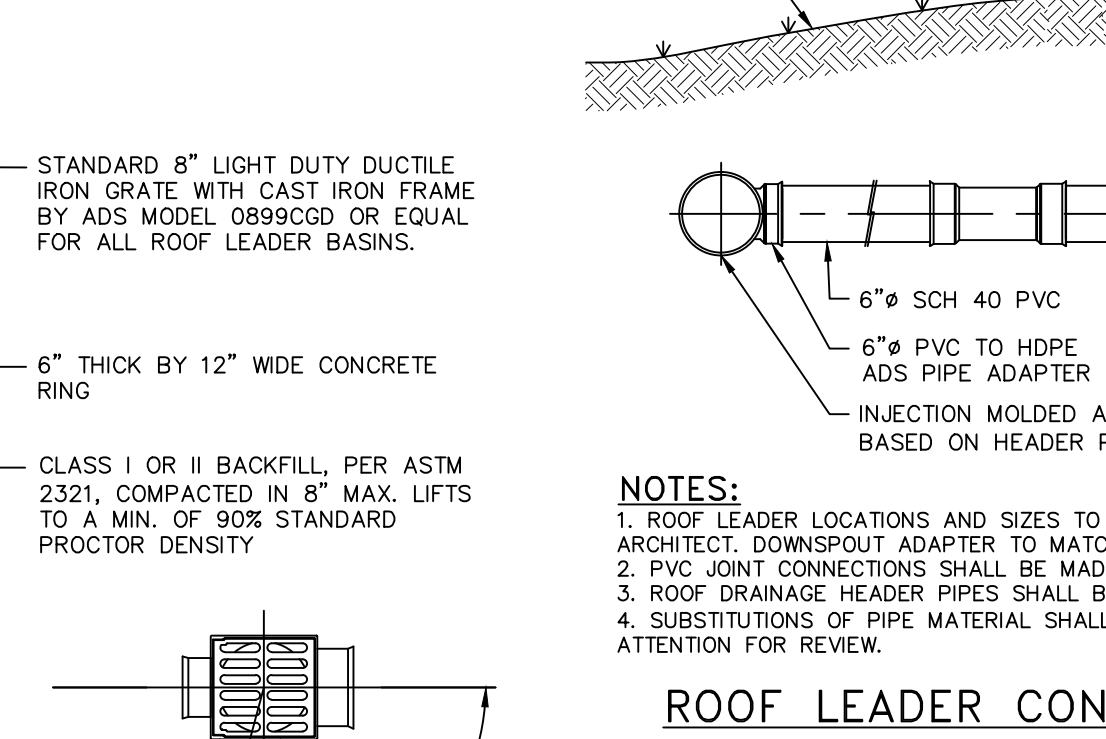


WATER SERVICE CONNECTION DETAIL
NOT TO SCALE



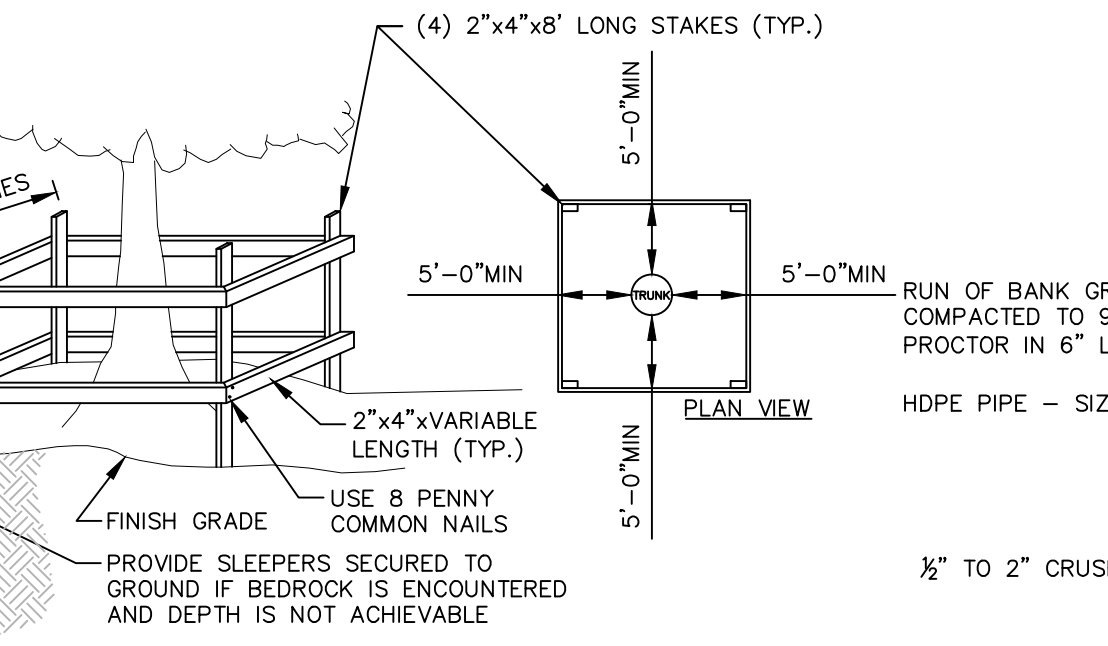
- NOTES:
1. ROOF LEADER LOCATIONS AND SIZES TO BE DETERMINED BY THE PROJECT ARCHITECT. DOWNSPOUT ADAPTER TO MATCH DOWNSPOUT SIZE.
 2. PVC JOINT CONNECTIONS SHALL BE MADE WITH PVC CEMENT.
 3. ROOF DRAINAGE HEADER PIPES SHALL BE AS NOTED ON THE UTILITY SHEET.
 4. SUBSTITUTIONS OF PIPE MATERIAL SHALL BE BROUGHT TO THE DESIGN ENGINEER'S ATTENTION FOR REVIEW.

ROOF LEADER CONNECTION DETAIL
NOT TO SCALE



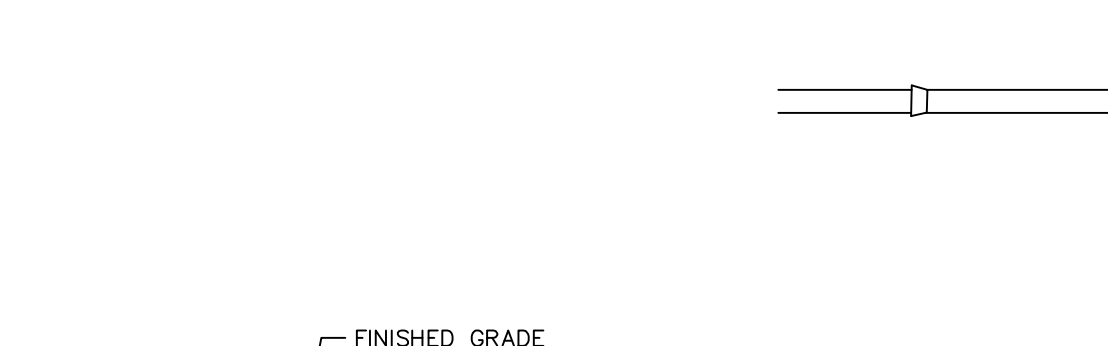
- NOTES:
1. EXCAVATION AND TRENCHING SHALL MEET ALL OSHA REQUIREMENTS.
 2. SUITABLE RUN OF TRENCH SHALL NOT INCLUDE FROZEN MATERIALS, DEBRIS, ORGANIC MATERIALS, LARGE STONES OR OTHER UNSUITABLE MATERIALS. IF THE RUN OF TRENCH MATERIAL IS FOUND TO BE UNSUITABLE, A SUITABLE BACKFILL MATERIAL SHALL BE IMPORTED AND USED.

STORMWATER PIPE IN TRENCH DETAIL
NOT TO SCALE



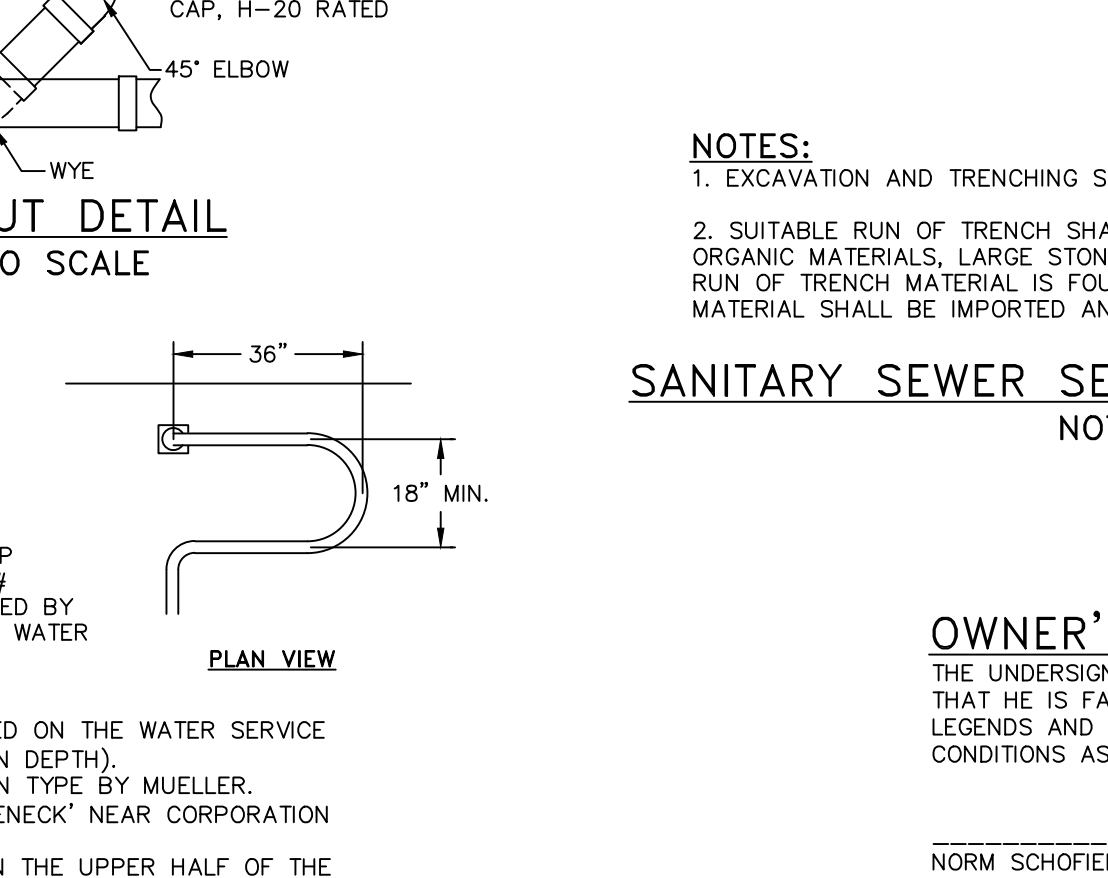
- NOTES:
1. TREES TO REMAIN NOTED ON EXISTING CONDITIONS PLAN.
 2. NOT ALL TREES TO REMAIN REQUIRE PROTECTION. TREE PROTECTION TO BE UTILIZED ON TREES WHERE CONSTRUCTION TRAFFIC WOULD COMPACT THE ROOT ZONE OF THE TREE.

TEMPORARY TREE PROTECTION DETAIL
NOT TO SCALE



- NOTES:
1. A MINIMUM 5' COVER SHALL BE PROVIDED ON THE WATER SERVICE LINE (CONDITIONED ON ACTUAL WATER MAIN DEPTH).
 2. CORPORATION STOP TO BE COMPRESSION TYPE BY MUELLER.
 3. WATER SERVICE LINE TO HAVE A 'GOOSENECK' NEAR CORPORATION STOP.
 4. CORPORATION STOP TO BE INSTALLED IN THE UPPER HALF OF THE WATER MAIN AT AN ANGLE OF APPROXIMATELY 45° FROM HORIZONTAL.

CLEANOUT DETAIL
NOT TO SCALE

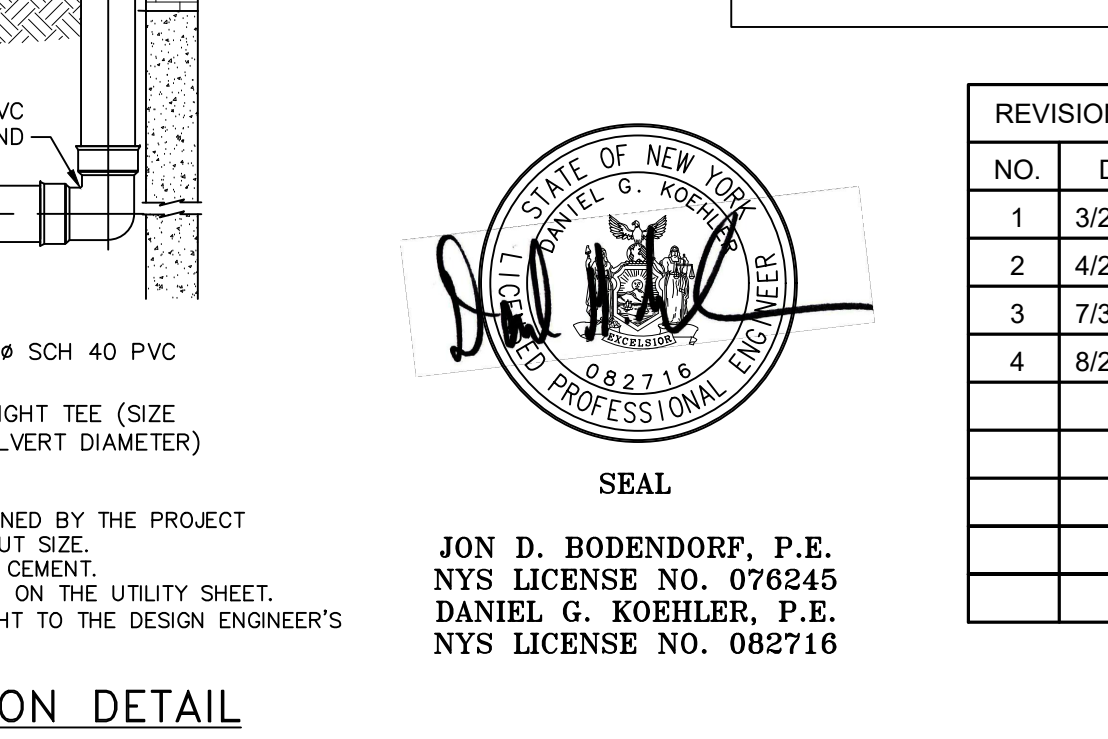


SANITARY SEWER SERVICE CONNECTION DETAIL
NOT TO SCALE



- NOTES:
1. EXCAVATION AND TRENCHING SHALL MEET ALL OSHA REQUIREMENTS.
 2. SUITABLE RUN OF TRENCH SHALL NOT INCLUDE FROZEN MATERIALS, DEBRIS, ORGANIC MATERIALS, LARGE STONES OR OTHER UNSUITABLE MATERIALS. IF THE RUN OF TRENCH MATERIAL IS FOUND TO BE UNSUITABLE, A SUITABLE BACKFILL MATERIAL SHALL BE IMPORTED AND USED.

OWNER'S CONSENT:
NOT TO SCALE



REVISIONS:
NOT TO SCALE

Special Use Permit Application
Sheet 5 of 5 - Construction Details

Owner:
North Avenue Properties, LLC
1181 North Avenue
Beacon, New York 12508

Architect:
Aryeh Siegel, Architect
514 Main Street
Beacon, New York 12508

Site / Civil Engineer:
Hudson Land Design
174 Main Street
Beacon, New York 12508

Surveyor:
John J. Post, Jr.
PO Box 827
Stone Ridge, New York 12484

Landscape Designer:
Landscape Restorations
P.O. Box 286
Beacon, New York 12508

Office Building - 1181 North Avenue
Beacon, New York
Scale: As Noted
February 27, 2018