



NOTE: THE MANUFACTURER DOES NOT PROVIDE PHOTOMETRIC INFORMATION FOR THESE FIXTURES. FIXTURES WILL BE SHIELDED TO AVOID LIGHT SPILLAGE ONTO ADJACENT PROPERTIES, AND TO SHIELD FROM LIGHT PROJECTING UPWARD TO THE SKY

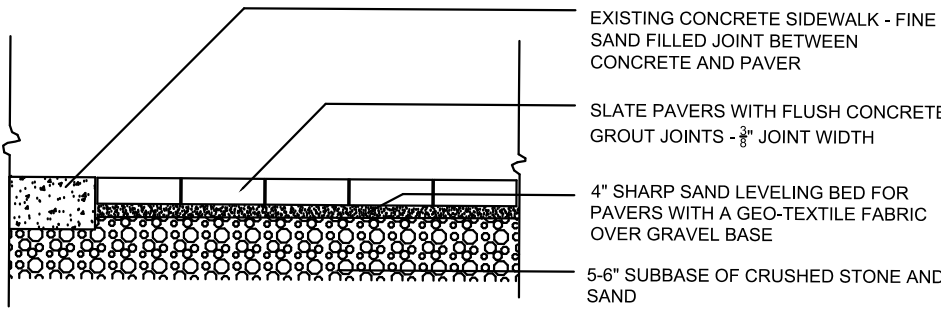
L1: Wall Mounted House Light
HUBBARDTON FORGE "HOOD" OUTDOOR DARK SKY COMPLIANT WALL SCONCE #306563. 15" HIGH X 6 1/2" WIDE. BURNISHED STEEL FINISH. 60 W INCANDESCENT LAMP



L2: Wall Mounted
SELUX LIGHTING "BETA PENDANT" WALL MOUNTED FIXTURE. MODEL #BPC-L-R2-1-H50-BK-120-HS-PC WITH LOW GLARE CUTOFF SHIELD. COLOR: BLACK. PHOTOCCELL CONTROL. OR APPROVED EQUAL. MOUNTING HEIGHT = 10 FEET. DARK SKY COMPLIANT



L3: Pole Mounted
SELUX LIGHTING "BETA PENDANT" POLE MOUNTED 150W FIXTURE. MODEL #BPC-L-R2-1-H150-BK-120-HS-PC WITH LOW GLARE CUTOFF SHIELD. COLOR: BLACK. TIMER CONTROL. OR APPROVED EQUAL. MOUNTING HEIGHT ON A35 SERIES BLACK ALUMINUM POLE = 12 FEET. DARK SKY COMPLIANT



Slate Paver Detail
Not to Scale

| REVISIONS: | | | |
|------------|----------|-------------------------------------|-----|
| NO. | DATE | DESCRIPTION | BY |
| 1 | 03/27/18 | NO CHANGE | AJS |
| 2 | 04/24/18 | REVISED PER PLANNING BOARD COMMENTS | AJS |
| 3 | 07/31/18 | REVISED PER PLANNING BOARD COMMENTS | AJS |
| 4 | 08/28/18 | REVISED PER PLANNING BOARD COMMENTS | AJS |
| | | | |
| | | | |

APPROVED BY RESOLUTION OF THE PLANNING BOARD OF THE CITY OF BEACON, NEW YORK, ON THE _____ DAY OF _____, 20____, SUBJECT TO ALL REQUIREMENTS AND CONDITIONS OF SAID RESOLUTION. ANY CHANGE, ERASURE, MODIFICATION OR REVISION OF THIS PLAT, AS APPROVED, SHALL VOID THIS APPROVAL.

SIGNED THIS _____ DAY OF _____, 20____, BY _____ CHAIRMAN

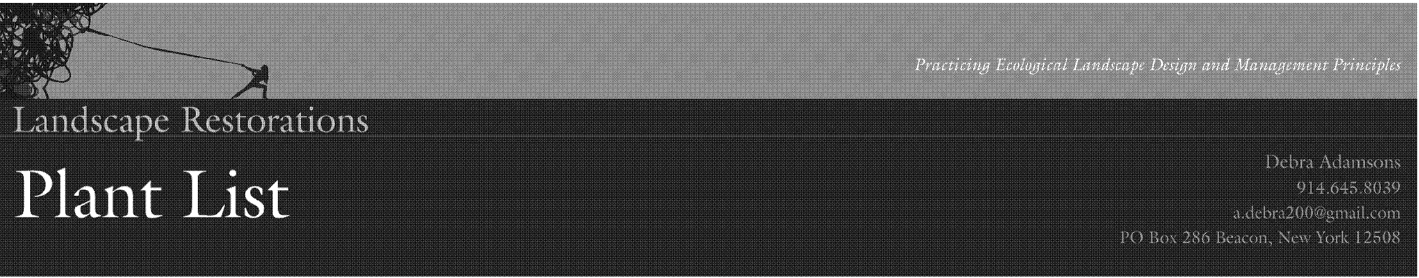
_____, SECRETARY

IN ABSENCE OF THE CHAIRMAN OR SECRETARY, THE ACTING CHAIRMAN OR ACTING SECRETARY RESPECTIVELY MAY SIGN IN THIS PLACE.

Lighting

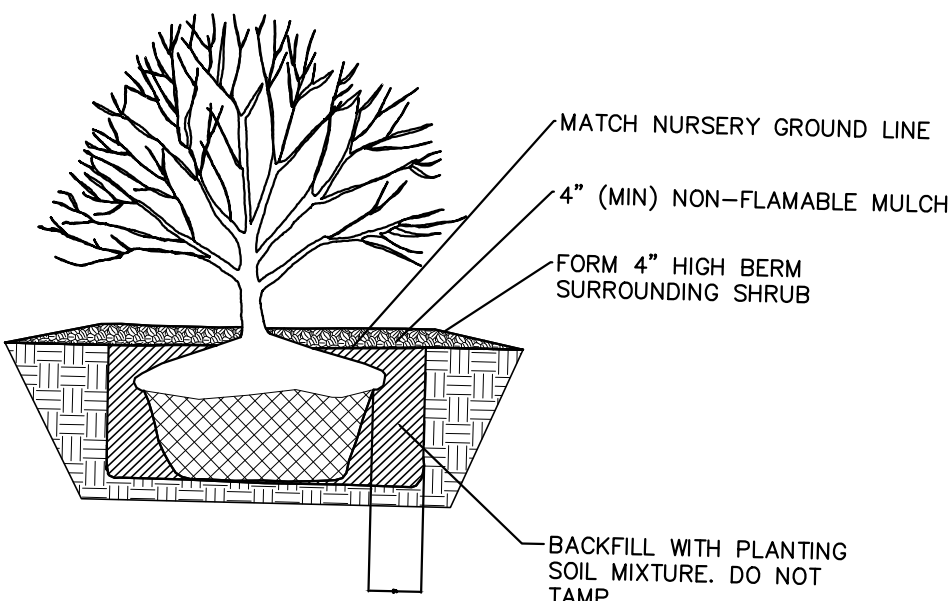
Not to Scale

NOTE: ALL EXTERIOR LIGHTING ON THE SITE SHALL BE DIRECTED AND/OR SHIELDED SO AS NOT TO CAUSE ANY OBJECTIONABLE GLARE OBSERVABLE FROM NEIGHBORING STREETS AND PROPERTIES. THE SOURCE (BULBS) OF SUCH LIGHTING SHALL NOT BE VISIBLE FROM SAID NEIGHBORING STREETS AND PROPERTIES. PHOTOMETRIC DIAGRAMS ARE SHOWN WITH SHIELDED CONDITIONS.



Norman Schofield Office Building 1181 North Ave Beacon NY
February 27 2018
NURSERY: North Creek and Hardscrabble

| Botanical Name | Common Name | Key | Type | Quantity | Size | Notes |
|---|-----------------------|--------|-------|----------|------------------------|-------------------|
| <i>carex pensylvanica</i> | Oak Sedge | G-Cp | Grass | 500 | 10 Tray | Plugs |
| <i>ilex glabra</i> | Inkberry | S-Ig | Shrub | 11 | 7 gallon | |
| <i>ilex verticillata</i> 'Jim Dandy' | male for Sparkleberry | S-IvJD | Shrub | 3 | 3 gallon | |
| <i>rhododendron maximum</i> | Rhododendron | S-Rm | Shrub | 3 | 4-5' | Heavy Rootball |
| <i>amelanchier canadensis</i> | Serviceberry | T-Ac | Tree | 3 | 5-7' 1 1/2" caliper | Balled and Burlap |
| <i>ilex opaca</i> | Holly | T-lo | Tree | 2 | 6-7' 4"caliper | Balled and Burlap |
| <i>ilex verticillata</i> 'Sparkleberry' | Sparkleberry Tree | T-IvS | Tree | 3 | 5' | |
| <i>magnolia virginiana</i> | American Magnolia | T-Mv | Tree | 1 | 7' | Balled and Burlap |



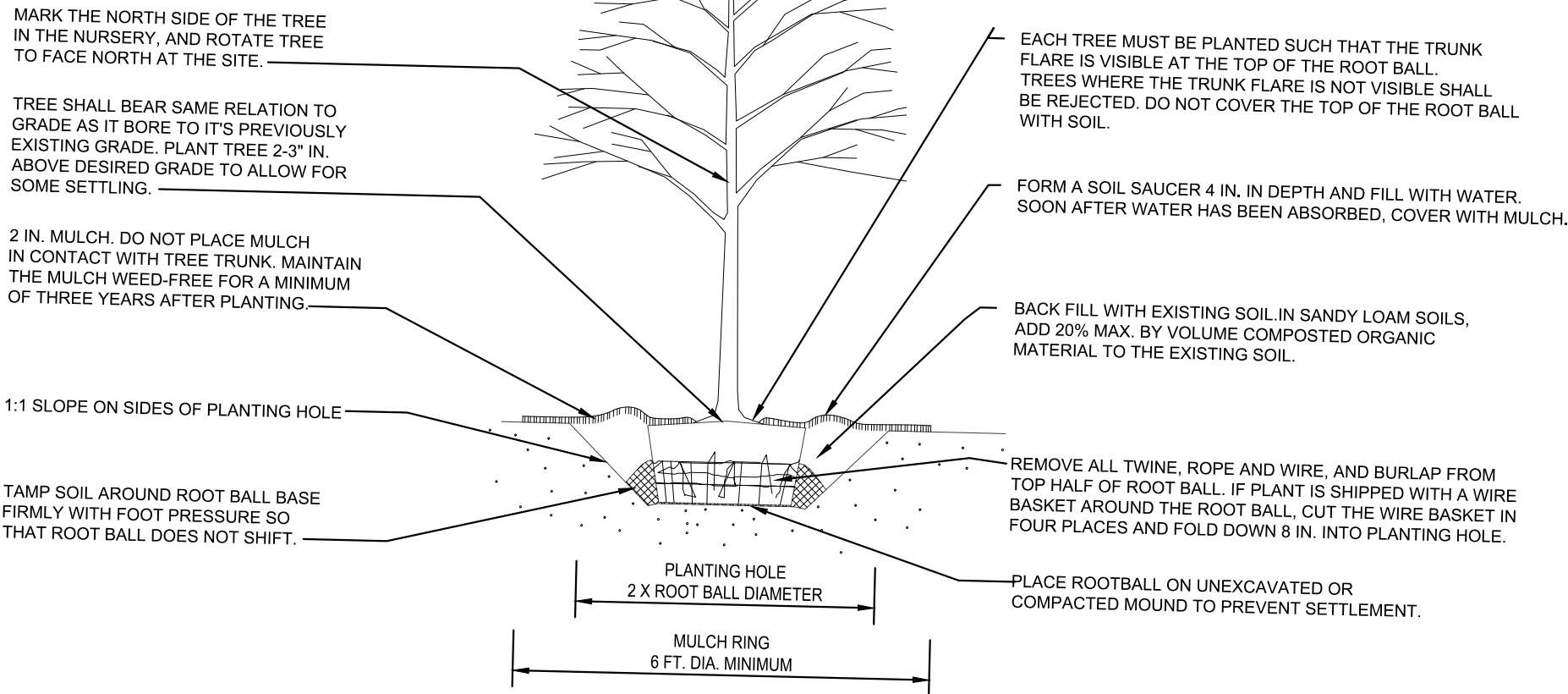
NOTE
1. WATER PER NURSERY SPECIFICATIONS IMMEDIATELY FOLLOWING PLANTING.
2. DETAIL IS FOR BOTH BALL & BURLAPPED OR CONTAINERED SHRUBS.

SHRUB PLANTING DETAIL
NOT TO SCALE

DO NOT HEAVILY PRUNE THE TREE AT PLANTING. PRUNE ONLY CROSSOVER LIMBS, CO-DOMINANT LEADERS, AND BROKEN OR DEAD BRANCHES. SOME INTERIOR TWIGS AND LATERAL BRANCHES MAY BE PRUNED; HOWEVER, DO NOT REMOVE THE TERMINAL BUDS OF BRANCHES THAT EXTEND TO THE EDGE OF THE CROWN.

STAKE TREES ONLY UPON THE APPROVAL OF THE LANDSCAPE DESIGNER.

WRAP TREE TRUNKS ONLY UPON THE APPROVAL OF THE LANDSCAPE DESIGNER.



TREE PLANTING DETAIL

NOTE: THIS DETAIL ASSUMES THAT THE PLANTING SPACE IS LARGER THAN 8 FT. SQUARE, OPEN TO THE SKY, AND NOT COVERED BY ANY PAVING OR GRATING.

NOTES:

- The parcel shown hereon are generally as described in Liber 1884 Page 688 recorded in the Dutchess County Clerk's Office.
- Subject to any easements and/or rights of way that an accurate up to date abstract of title may show.
- Surveyed as per record deed, existing monumentation, recorded and unrecorded maps.
- New York State Department of Transportation only appropriated that land shown and delineated on Map No. 6, Parcel 8. Map No. 6, Parcel 56 is a permanent easement encumbering the property shown hereon and was not acquired in fee. This map is on file at the New York StateDepartment of Transportation Regional Office No. 8 located in Poughkeepsie, New York.

MAP REFERENCE:

"Survey prepared for Normington J. Schofield" dated March 4, 2001 as prepared by Dennis E. Walden, Land Surveyor, N.Y.S. License No. 49555.

TAX MAP REFERENCE:

CITY OF BEACON 5955-19-716048

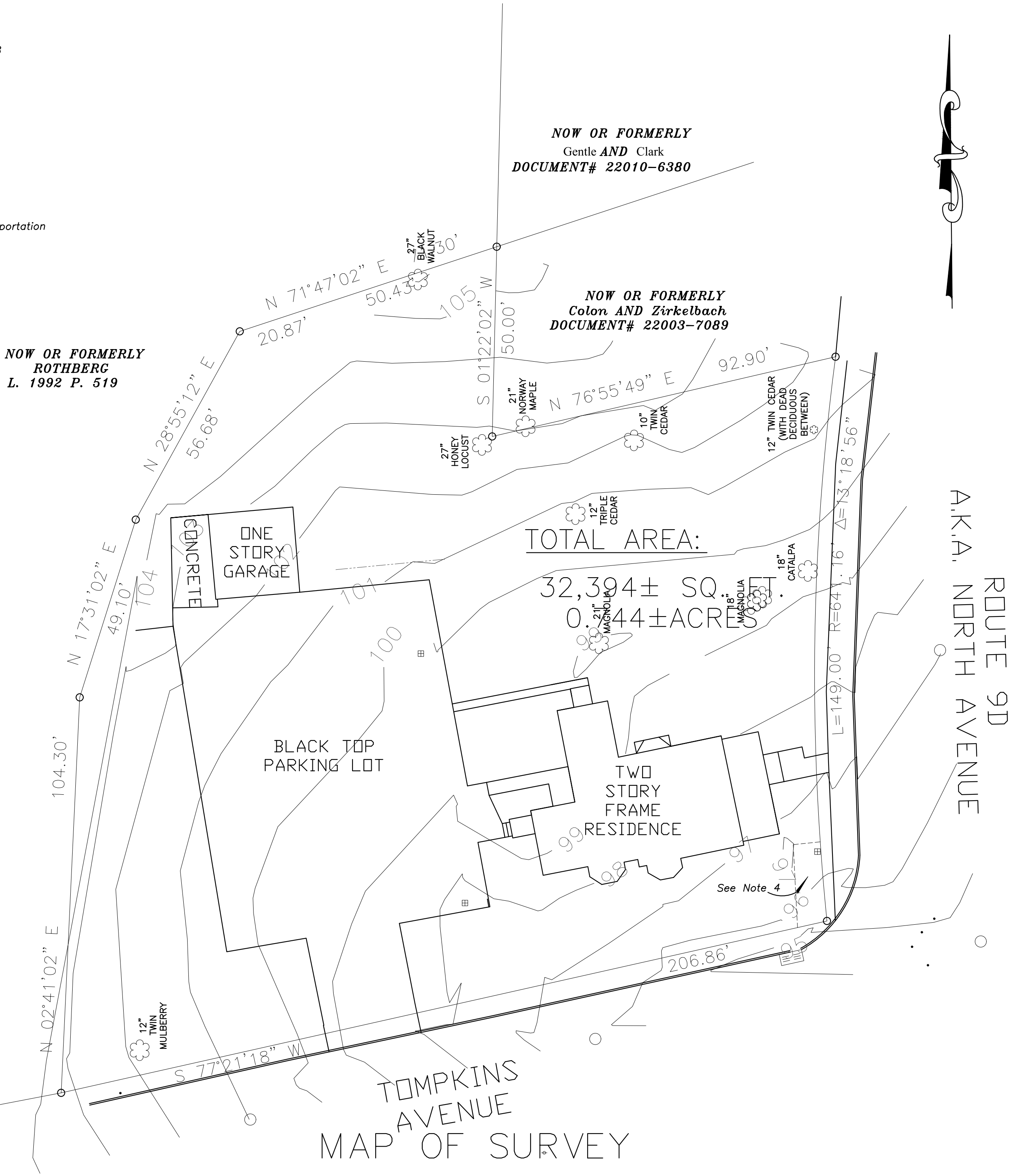
VERTICAL DATUM:

ASSUMED

Survey

Scale: 1" = 20'

I hereby certify that the survey shown hereon is based on



Special Use Permit Application

Sheet 2 of 5 - Existing Conditions Survey Plan / Planting Schedule

Owner:
North Avenue Properties, LLC
1181 North Avenue
Beacon, New York 12508

Architect:
Aryeh Siegel, Architect
84 Mason Circle
Beacon, New York 12508

Site / Civil Engineer:
Hudson Land Design
174 Main Street
Beacon, New York 12508

Surveyor:
John J. Post, Jr.
P.O. Box 827
Stone Ridge, New York

Landscape Designer:
Landscape Restorations
P.O. Box 286
Beacon, New York 12508

Office Building - 1181 North Avenue
Beacon, New York
Scale: As Noted
February 27, 2018