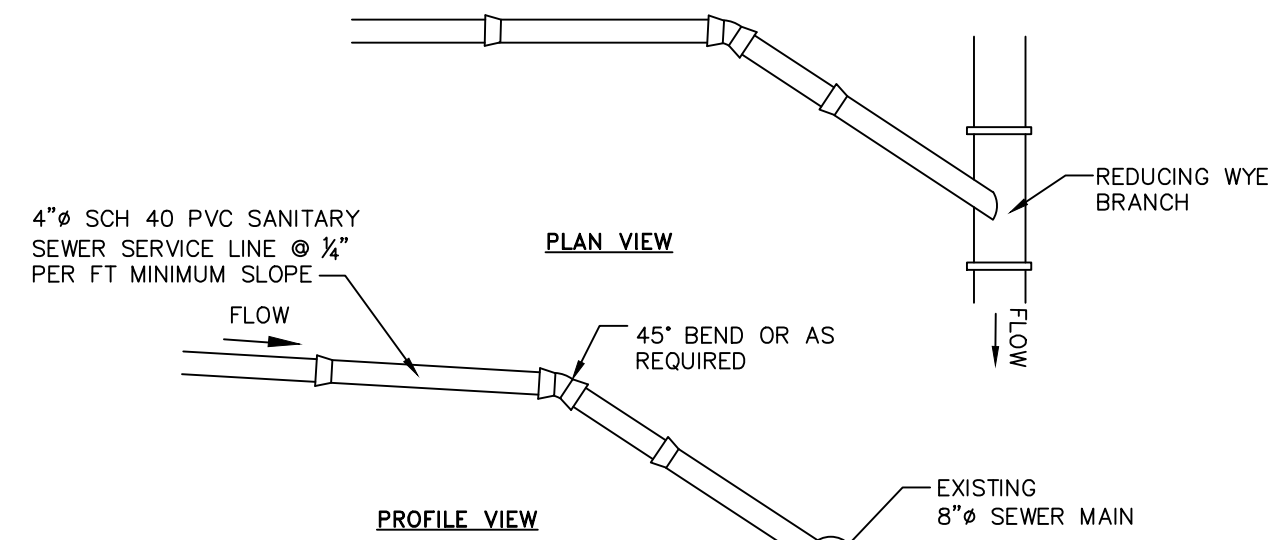


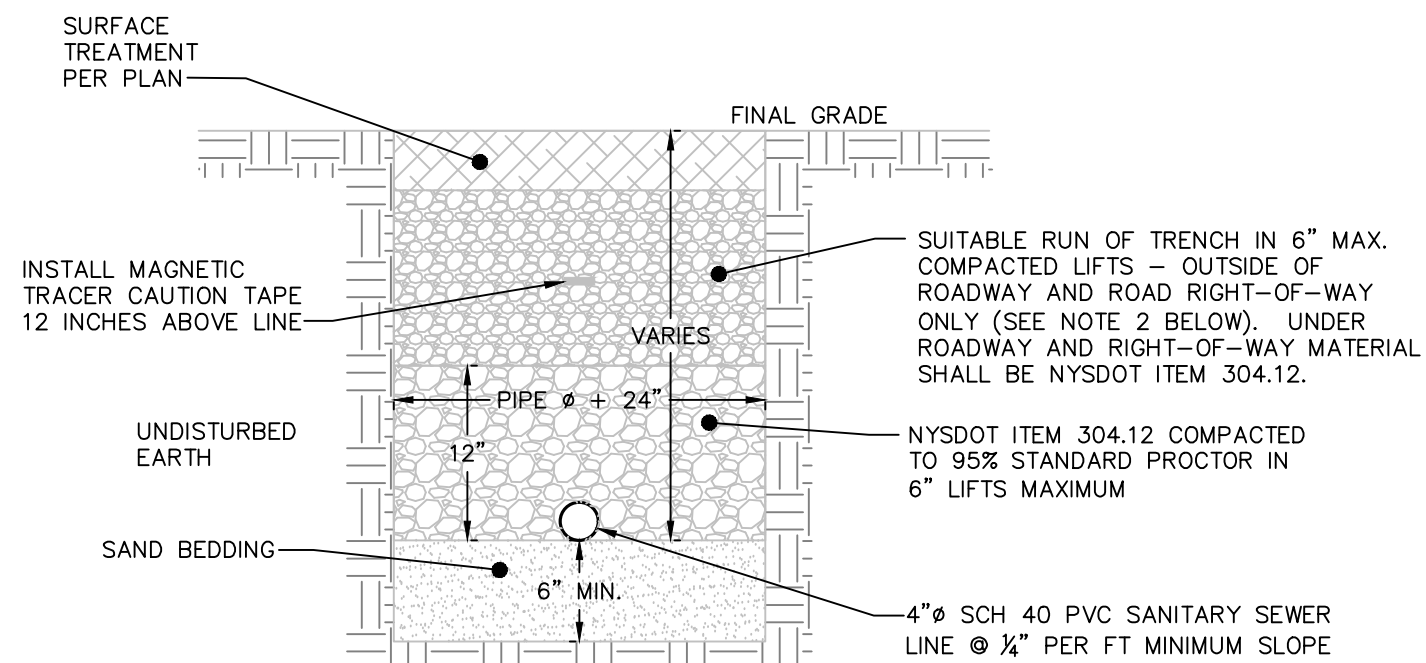
PAVED DRIVEWAY SECTION DETAIL
NOT TO SCALE



NOTES:

1. EXCAVATION AND TRENCHING SHALL MEET ALL OSHA REQUIREMENTS.
2. SUITABLE RUN OF TRENCH SHALL NOT INCLUDE FROZEN MATERIALS, DEBRIS, ORGANIC MATERIALS, LARGE STONES OR OTHER UNSUITABLE MATERIALS. IF THE RUN OF TRENCH MATERIAL IS FOUND TO BE UNSUITABLE, A SUITABLE BACKFILL MATERIAL SHALL BE IMPORTED AND USED.
3. TAPPING SADDLE FOR CONNECTION OF THE PROPOSED SERVICE LINE TO THE EXISTING SEWER MAIN TO BE A 4" PREDCO HUB TAP SADDLE - MODEL #HTS4/E.

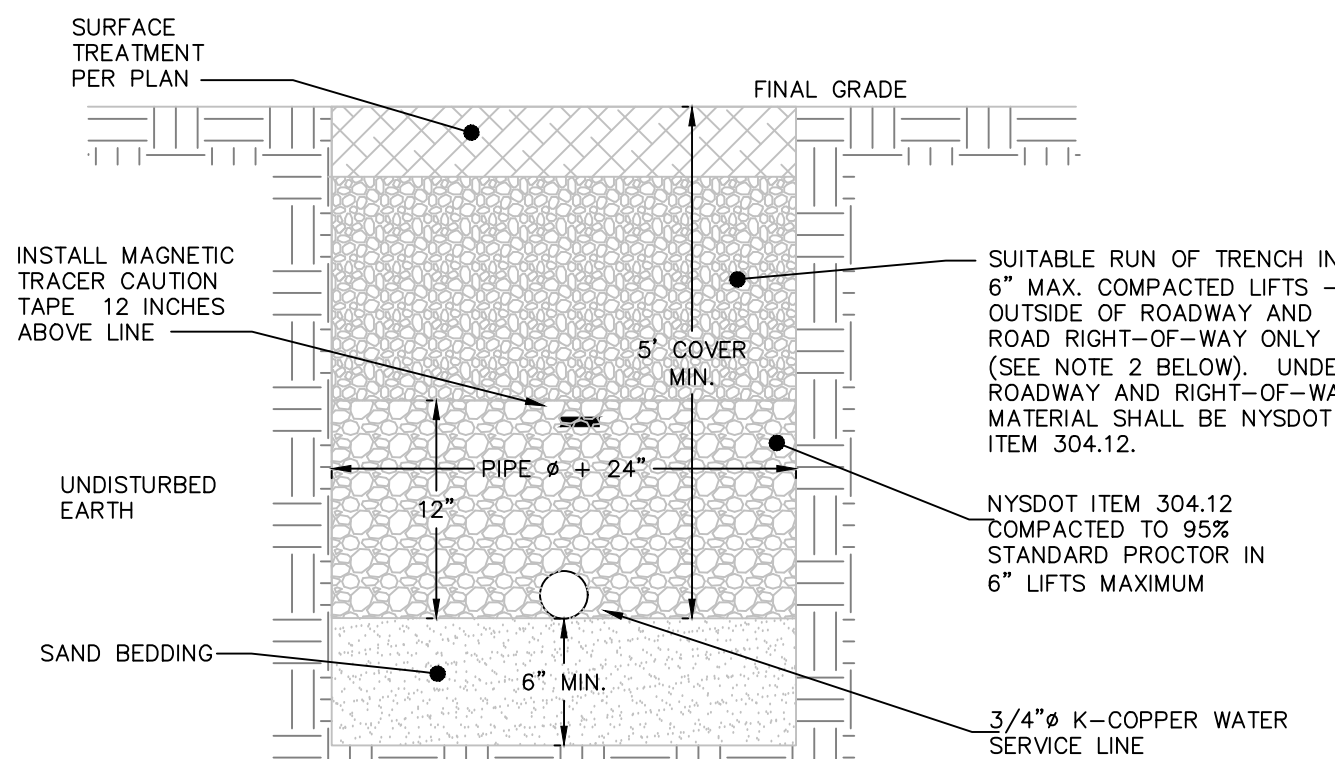
SANITARY SEWER SERVICE CONNECTION DETAIL
NOT TO SCALE



NOTES:

1. EXCAVATION AND TRENCHING SHALL MEET ALL OSHA REQUIREMENTS.
2. SUITABLE RUN OF TRENCH SHALL NOT INCLUDE FROZEN MATERIALS, DEBRIS, ORGANIC MATERIALS, LARGE STONES OR OTHER UNSUITABLE MATERIALS. IF THE RUN OF TRENCH MATERIAL IS FOUND TO BE UNSUITABLE, A SUITABLE BACKFILL MATERIAL SHALL BE IMPORTED AND USED.

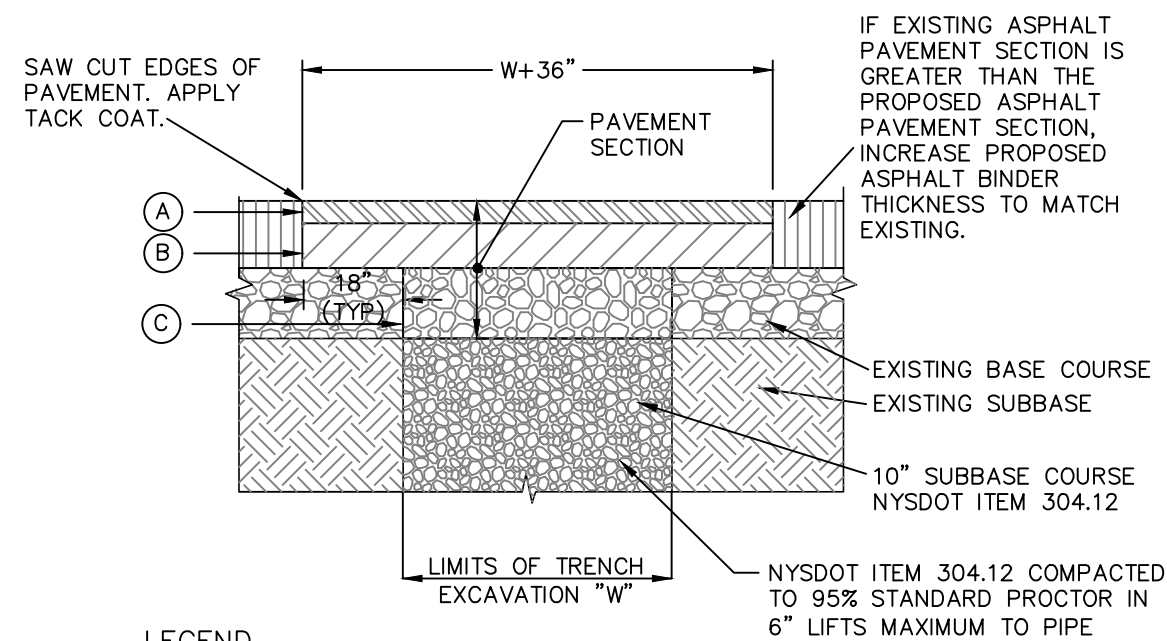
SANITARY SEWER SERVICE TRENCH DETAIL
NOT TO SCALE



NOTES:

1. EXCAVATION AND TRENCHING SHALL MEET ALL OSHA REQUIREMENTS.
2. SUITABLE RUN OF TRENCH SHALL NOT INCLUDE FROZEN MATERIALS, DEBRIS, ORGANIC MATERIALS, ENLARGED PARTICLES, LARGE STONES OR OTHER UNSUITABLE MATERIALS. IF THE RUN OF TRENCH MATERIAL IS FOUND TO BE UNSUITABLE, A SUITABLE BACKFILL MATERIAL SHALL BE IMPORTED AND USED.
3. IN AREAS WHERE 6" COVER REQUIREMENT CANNOT BE MET, THE CONTRACTOR SHALL PROVIDE PIPE INSULATION TO PREVENT FREEZING.
4. IF WATER SERVICE AND SEWER SERVICE LINE CROSSINGS ARE NEEDED, PROVIDE 18" OF VERTICAL SEPARATION

WATER SERVICE LINE TRENCH DETAIL
NOT TO SCALE



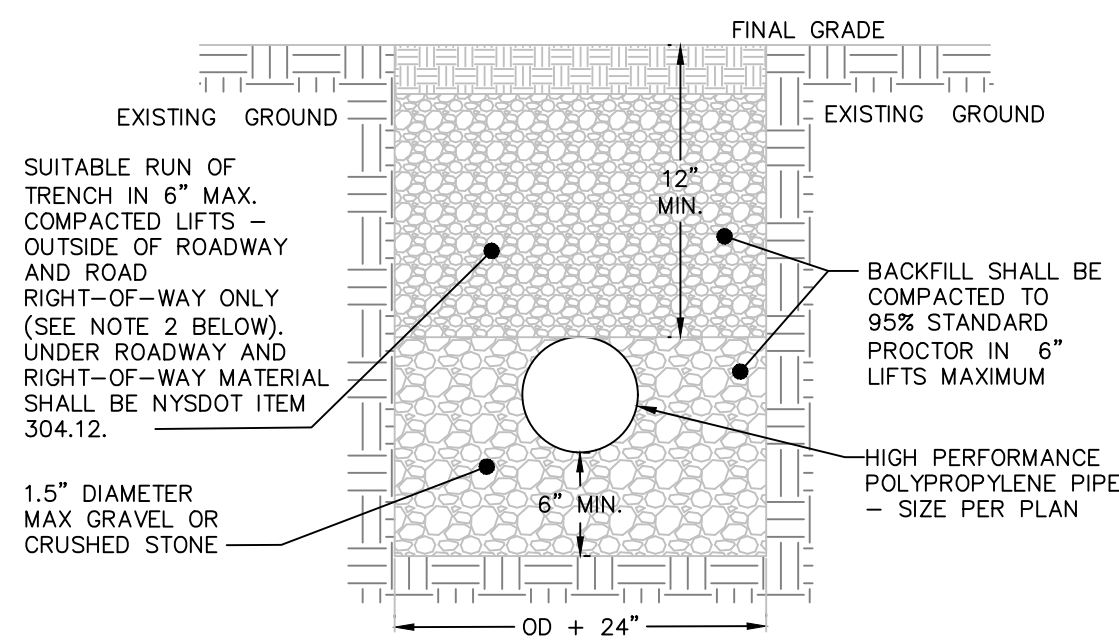
LEGEND

- (A) 1.5" ASPHALT CONCRETE TOP COURSE- NYSDOT TYPE F1
(B) 3.0" ASPHALT CONCRETE BINDER COURSE- NYSDOT TYPE F9
(C) 3.0" ASPHALT BASE COURSE- NYSDOT TYPE F9

NOTES:

1. SAW CUT MIN. 18" BEYOND EXCAVATION WITH SMOOTH EDGES. 18" JOINT BETWEEN EXISTING AND NEW TOP COURSE TO BE MILLED. JOINT TO BE SEALED WITH POLYMER MODIFIED SEALER.
2. FURNISH, PLACE, AND COMPACT SUBBASE.
3. TACK COAT IN ACCORDANCE WITH NYSDOT STANDARD SPEC.
4. FURNISH AND PLACE ASPHALT CONCRETE PAVEMENT AS SPECIFIED.

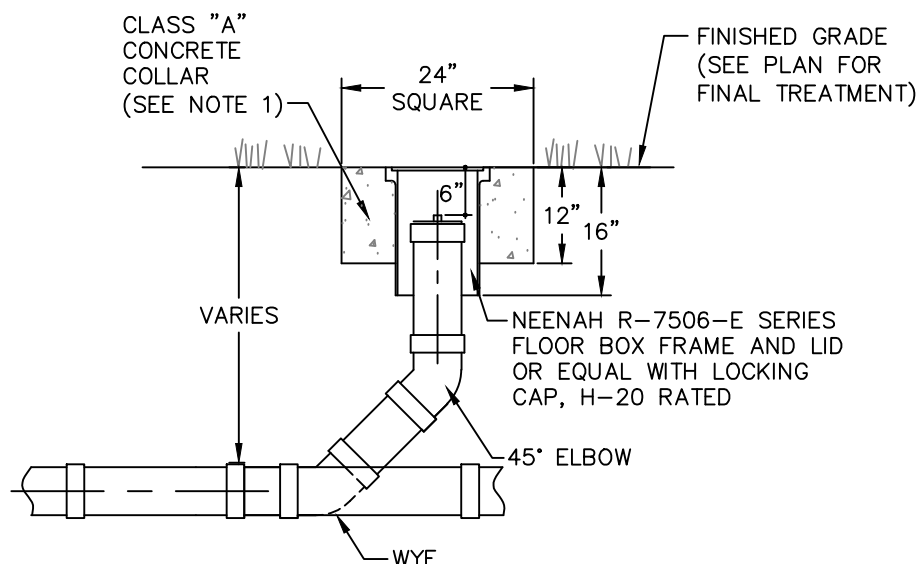
PAVEMENT RESTORATION DETAIL
NOT TO SCALE



NOTES:

1. EXCAVATION AND TRENCHING SHALL MEET ALL OSHA REQUIREMENTS.

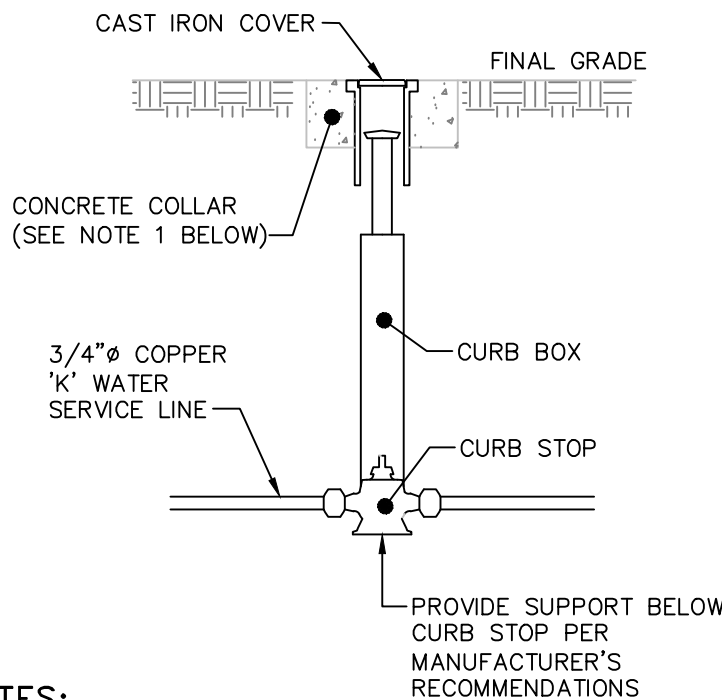
STORM LINE TRENCH DETAIL
NOT TO SCALE



NOTES:

1. CONCRETE COLLAR TO BE PROVIDED IN AREAS THAT ARE NOT PAVED. THE COLLAR SHALL BE 6" FROM THE COVER AND SHALL EXTEND 6" BELOW FINAL GRADE.

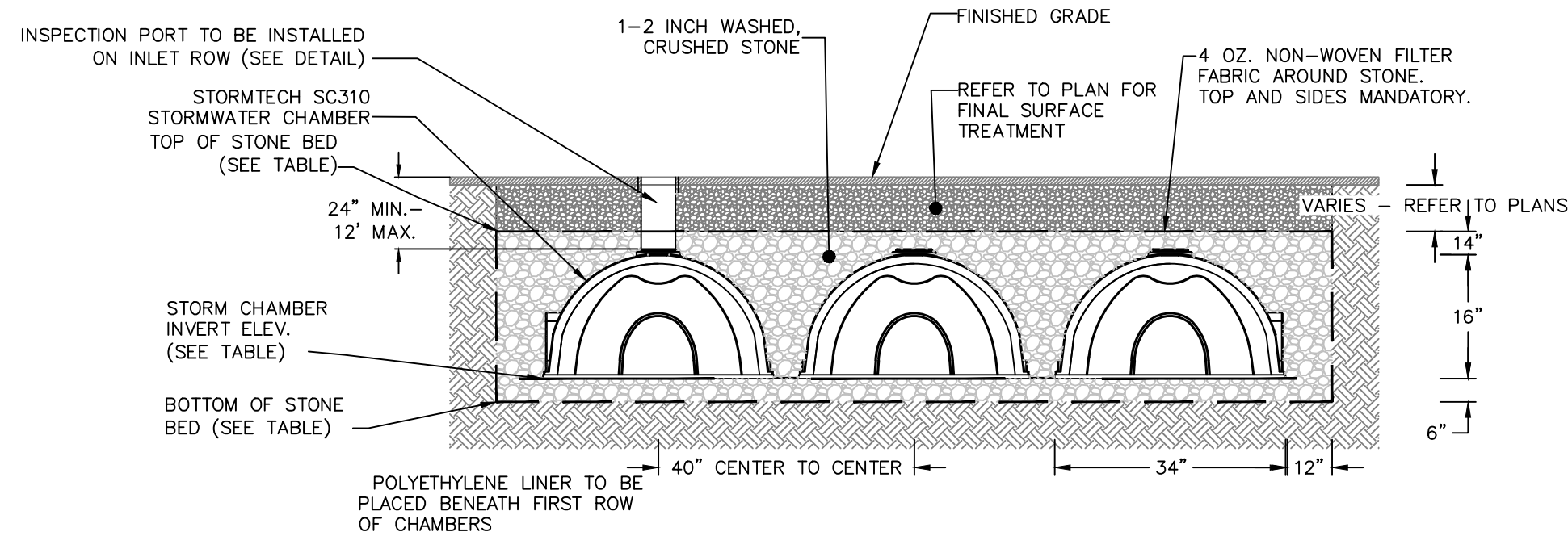
CLEANOUT DETAIL
NOT TO SCALE



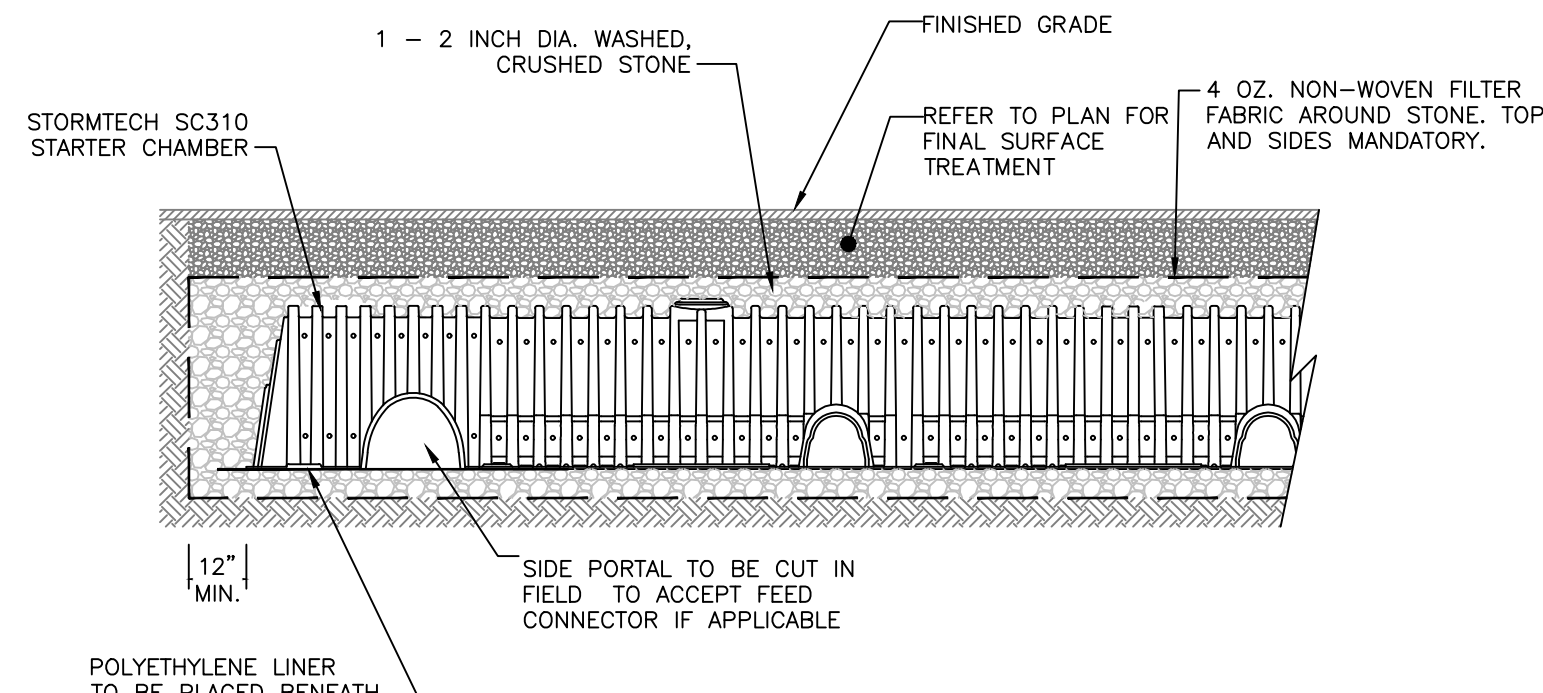
NOTES:

1. CONCRETE COLLAR TO BE PROVIDED IN AREAS THAT ARE NOT PAVED. THE COLLAR SHALL BE 6" FROM THE COVER AND SHALL EXTEND 6" BELOW FINAL GRADE.
2. CURB STOP TO BE COMPRESSION TYPE BY MUELLER.
3. AREA AROUND CURB BOX TO BE BACKFILLED WITH GRAVELLY MATERIAL.

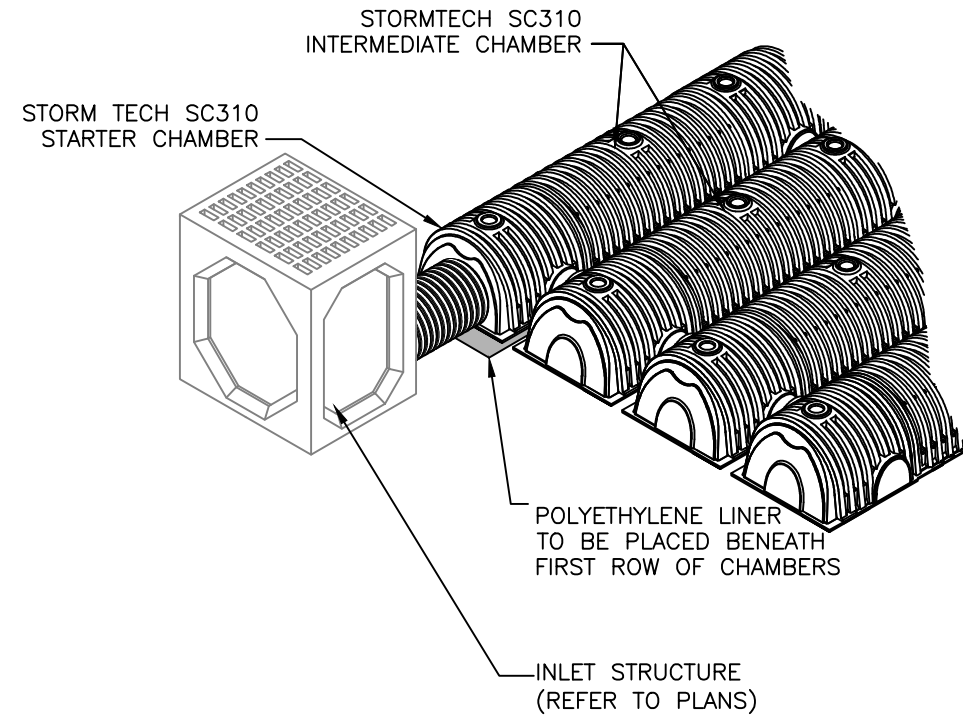
WATER SHUT-OFF VALVE DETAIL
NOT TO SCALE



SECTION VIEW



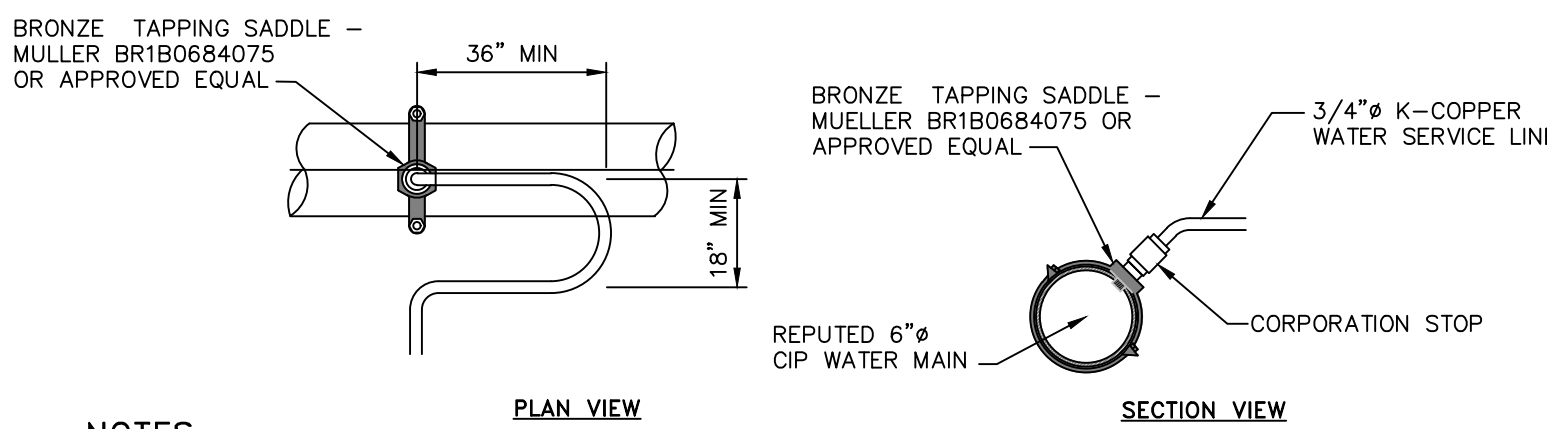
UNDERGROUND DETENTION SYSTEM DETAIL
NOT TO SCALE



NOTES:

1. STORMTECH SC310 CHAMBERS BY STORMTECH, INC. OF ROCKY HILL, CT. ALL CHAMBERS SHALL BE INSTALLED IN ACCORDANCE WITH STORMTECH INC.'S CURRENT RECOMMENDED INSTALLATION GUIDELINES.
2. THE BED OF THE SYSTEM FOOTPRINT SHALL BE LAID NEARLY LEVEL.
3. THE CONTRACTOR SHALL NOTIFY THE DESIGN ENGINEER IF SUBSURFACE CONDITIONS IN THE AREAS OF THE INFILTRATOR TRENCHES IS NOT CONSISTENT WITH THE TEST PIT OR PERCOLATION DATA (E.G. GROUNDWATER OR BEDROCK ENCOUNTERED, SOIL PROPERTIES ARE NOT CONSISTENT, ETC.).

SYSTEM ID	BOTTOM OF STONE BED ELEVATION	CHAMBER INVERT	TOP OF STONE BED ELEVATION	STONE BED FOOTPRINT
LOT 2	213.0	213.5	217.0	424 S.F.



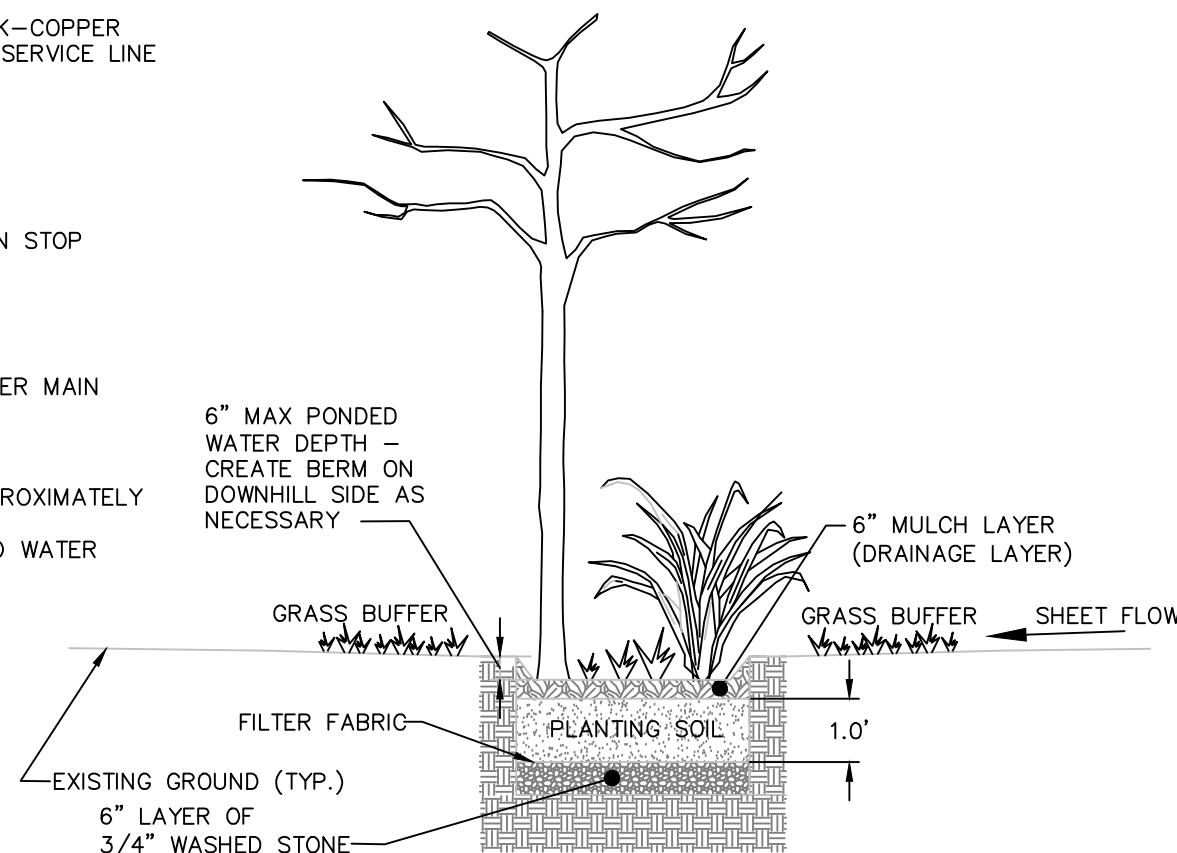
PLAN VIEW

SECTION VIEW

NOTES:

1. A MINIMUM 5' COVER SHALL BE PROVIDED ON THE WATER SERVICE LINE (CONDITIONED ON ACTUAL WATER MAIN DEPTH).
2. CORPORATION STOP TO BE COMPRESSION TYPE BY MUELLER.
3. WATER SERVICE LINE TO HAVE A 'GOOSENECK' NEAR CORPORATION STOP.
4. CORPORATION STOP TO BE INSTALLED IN THE UPPER HALF OF THE WATER MAIN AT AN ANGLE OF APPROXIMATELY 45° FROM HORIZONTAL.
5. THE CONTRACTOR SHALL INSTALL A FULL BODIED STAINLESS STEEL TAPPING SLEEVE AT THE PROPOSED WATER SERVICE LOCATION.

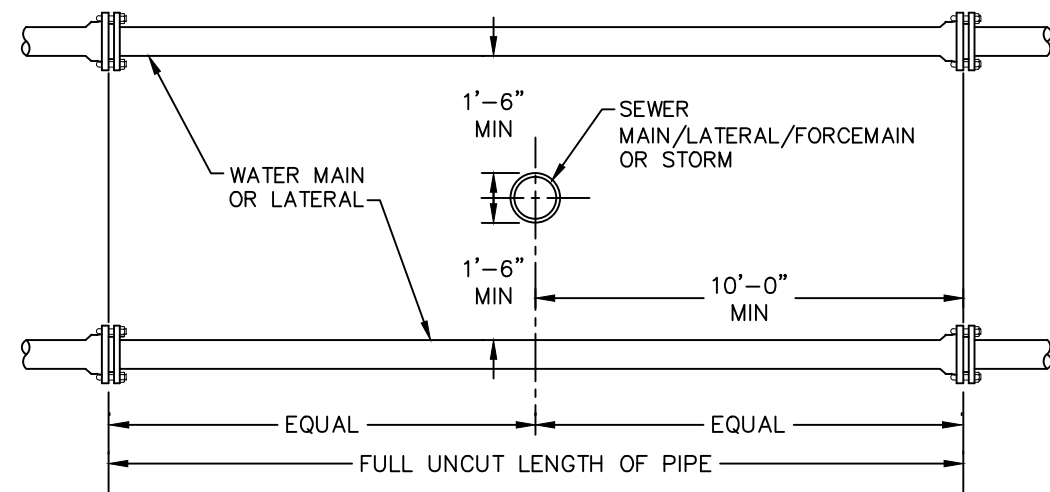
WATER SERVICE CONNECTION DETAIL
NOT TO SCALE



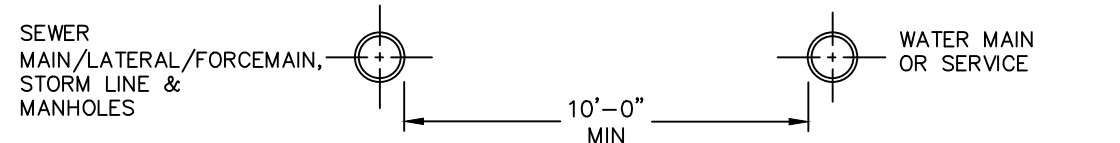
NOTES:

1. RAIN GARDEN TO HAVE A MINIMUM FOOTPRINT OF 60 SQUARE FEET WITH 10:1 SIDE SLOPES AT 0.5' DEEP; 1.0' SOIL MEDIA DEPTH; 0.5' DRAINAGE LAYER DEPTH; AND 0.5' PONDING DEPTH.
2. DIRECT ROOF LEADER DISCHARGE TO RAIN GARDEN.
3. PLANTS SHALL BE PLACED IN AREA SHOWN ON THE PLAN.

TYPICAL RAIN GARDEN DETAIL
NOT TO SCALE



VERTICAL SEPARATION



HORIZONTAL SEPARATION

NOTE:

NO DEVIATION IN THE SEPARATION REQUIREMENTS WILL BE PERMITTED WITHOUT THE EXPRESS APPROVAL OF THE DUTCHESS COUNTY DEPARTMENT OF HEALTH AND THE CITY OF BEACON. CONCRETE ENCASEMENT OF WATERLINE OR OFFSETTING OF WATERLINE SHALL BE REQUIRED WHERE SEPARATION DISTANCES CANNOT BE MAINTAINED.

WATER LINE SEPARATION DETAIL
NOT TO SCALE



DRAWN BY: AG		CHECKED BY: DGK	JOB NO.: 2018:014
REVISIONS:			
NO.	DATE	DESCRIPTION	BY
1	07/31/18	REVISED LAYOUT CONSULTANTS COMMENTS	AG

CONSTRUCTION DETAILS 32 ALICE ST. SUBDIVISION

32 ALICE STREET
CITY OF BEACON
DUTCHESS COUNTY, NEW YORK
TAX ID: 6054-47-320616
SCALE: 1" = 20'
JUNE 26, 2018



HUDSON LAND DESIGN
PROFESSIONAL ENGINEERING P.C.

174 MAIN STREET
BEACON, NEW YORK 12508
PH: 845-440-6926 F: 845-440-6637



JON D. BODENDORF, P.E.
NYS LICENSE NO. 076245
DANIEL G. KOEHLER, P.E.
NYS LICENSE NO. 082716

SHEET: 4 OF 4