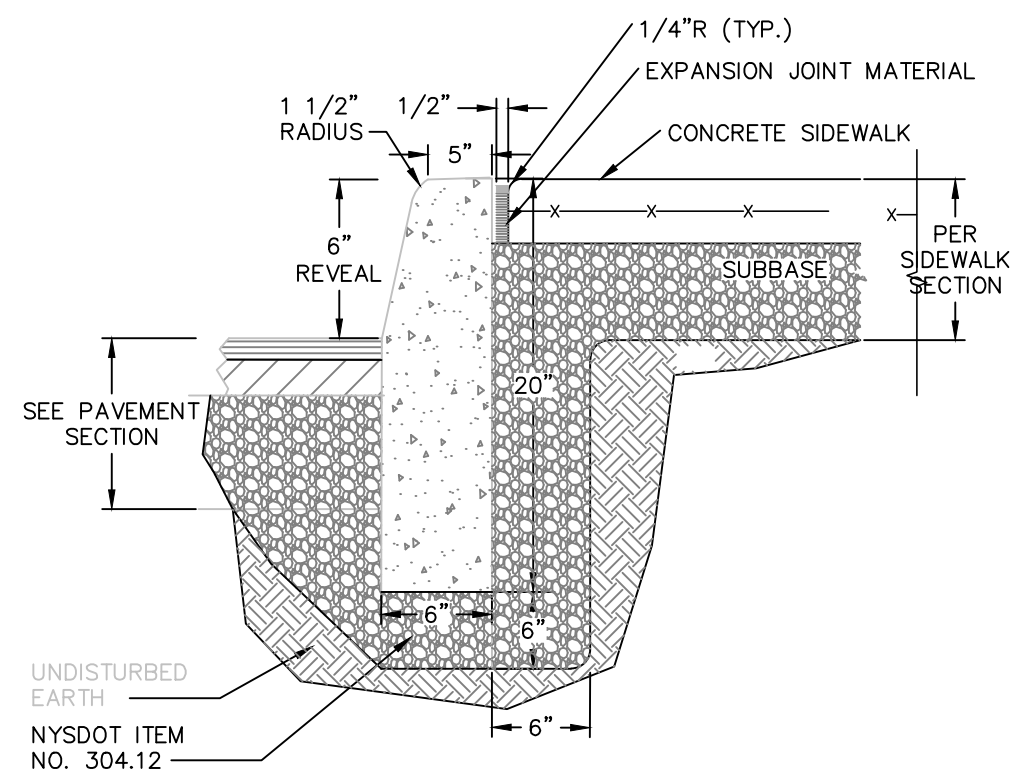


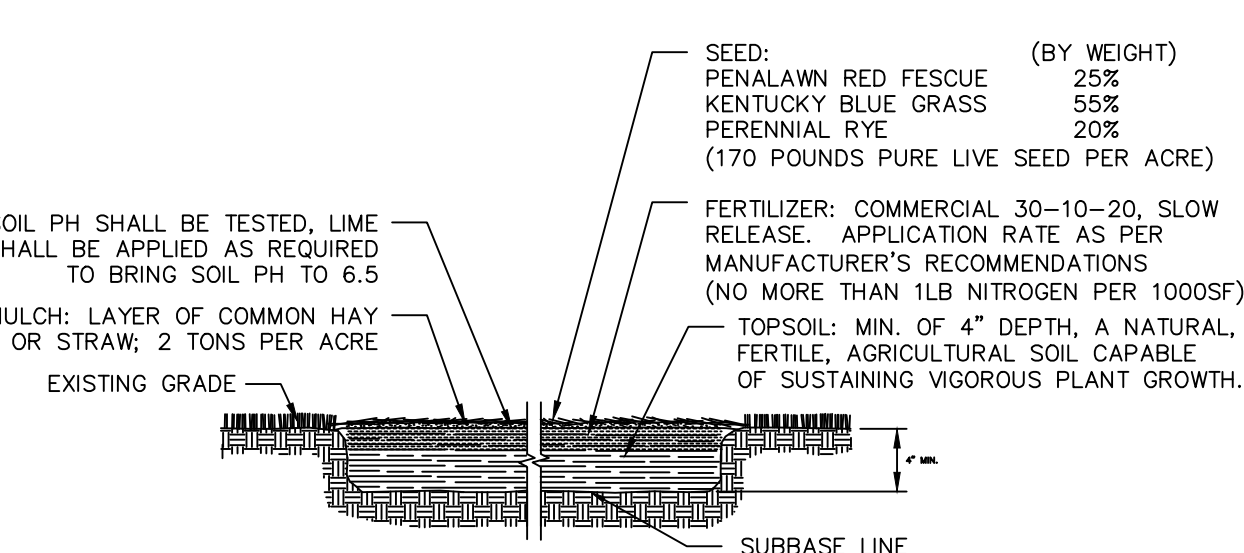
- LEGEND**
- (A) 1.5" ASPHALT CONCRETE TOP COURSE- NYSDOT TYPE F1  
(B) 3.0" ASPHALT CONCRETE BINDER COURSE- NYSDOT TYPE F9  
(C) 3.0" ASPHALT BASE COURSE- NYSDOT TYPE F9
- NOTES:**
1. SAW CUT MIN. 18" BEYOND EXCAVATION WITH SMOOTH EDGES. 18" JOINT BETWEEN EXISTING AND NEW TOP COURSE TO BE MILLED. JOINT TO BE SEALED WITH POLYMER MODIFIED SEALER.
  2. FURNISH, PLACE, AND COMPACT SUBBASE.
  3. TACK COAT IN ACCORDANCE WITH NYSDOT STANDARD SPEC.
  4. FURNISH AND PLACE ASPHALT CONCRETE PAVEMENT AS SPECIFIED.

### PAVEMENT RESTORATION DETAIL NOT TO SCALE

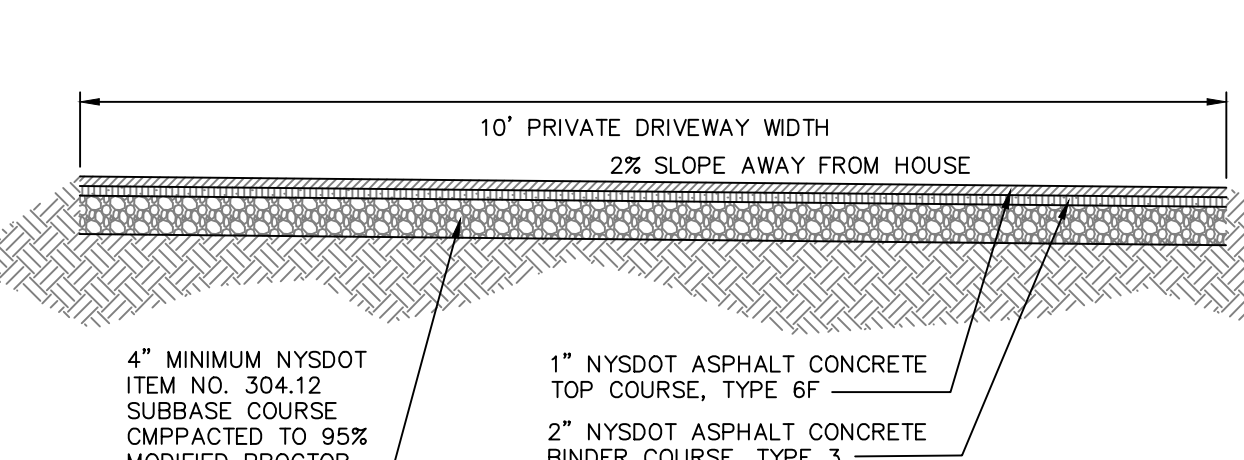


- NOTES:**
1. CONCRETE CURB SHALL BE 4,000 PSI CAST-IN-PLACE, AND IN ACCORDANCE WITH NYSDOT STANDARD SPECIFICATION SECTION 609.
  2. EXPANSION JOINTS OF 1/2" CELLULOSE OR SIMILAR MATERIAL SHALL BE PLACED AT 10 FOOT INTERVALS.
  3. FOR MOUNTABLE CURBS ABUTTING SIDEWALK OR OTHER HARDSCAPE, REFER TO "ABUTTING SIDEWALK" DETAIL.
  4. CONCRETE SHALL BE SEALED WITH A SALT RESISTANT SEALER.

### CAST-IN-PLACE CONCRETE CURB DETAIL NOT TO SCALE



### TOPSOIL SEED, FERTILIZER AND MULCH DETAIL NOT TO SCALE

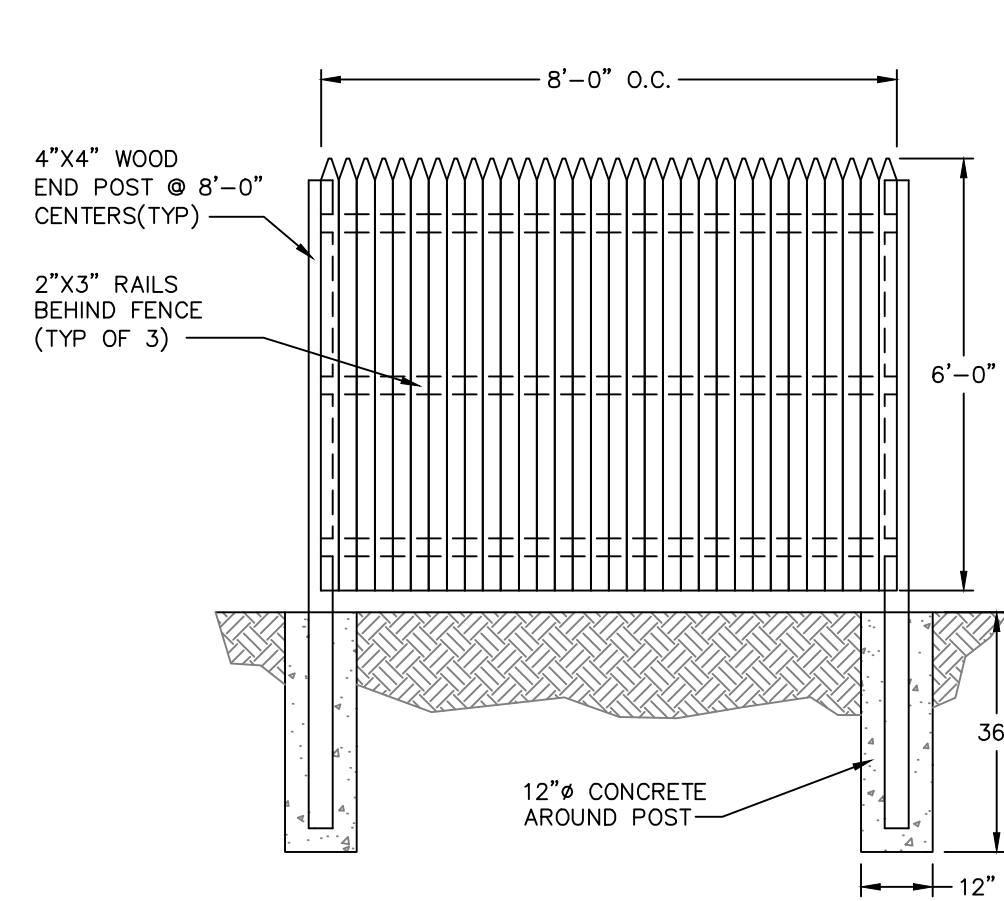


### PAVED DRIVEWAY SECTION DETAIL NOT TO SCALE

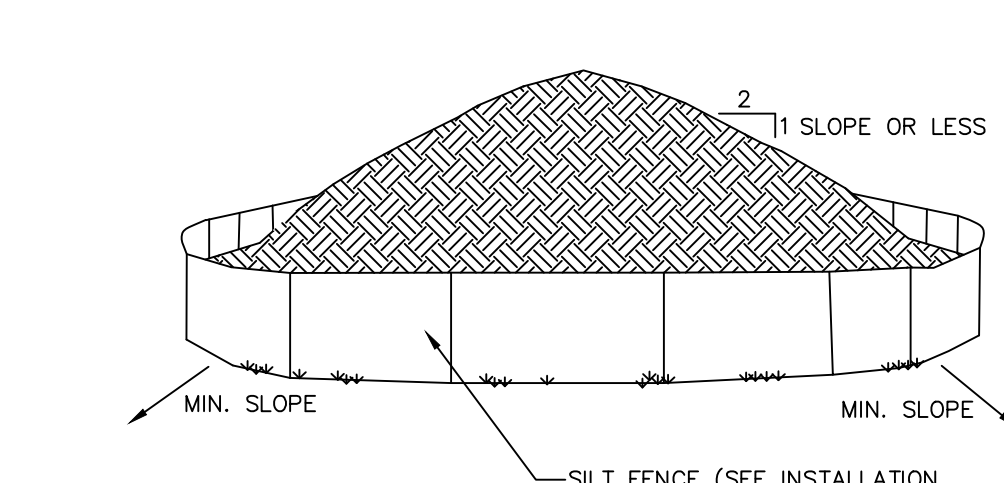
**OWNER'S CONSENT:**

THE UNDERSIGNED OWNER OF THE PROPERTY HEREON STATES THAT HE IS FAMILIAR WITH THIS MAP, ITS CONTENTS AND ITS LEGENDS AND HEREBY CONSENTS TO ALL SAID TERMS AND CONDITIONS AS STATED HEREON.

GARY JOSEPH OR TIM OWEN \_\_\_\_\_ DATE \_\_\_\_\_

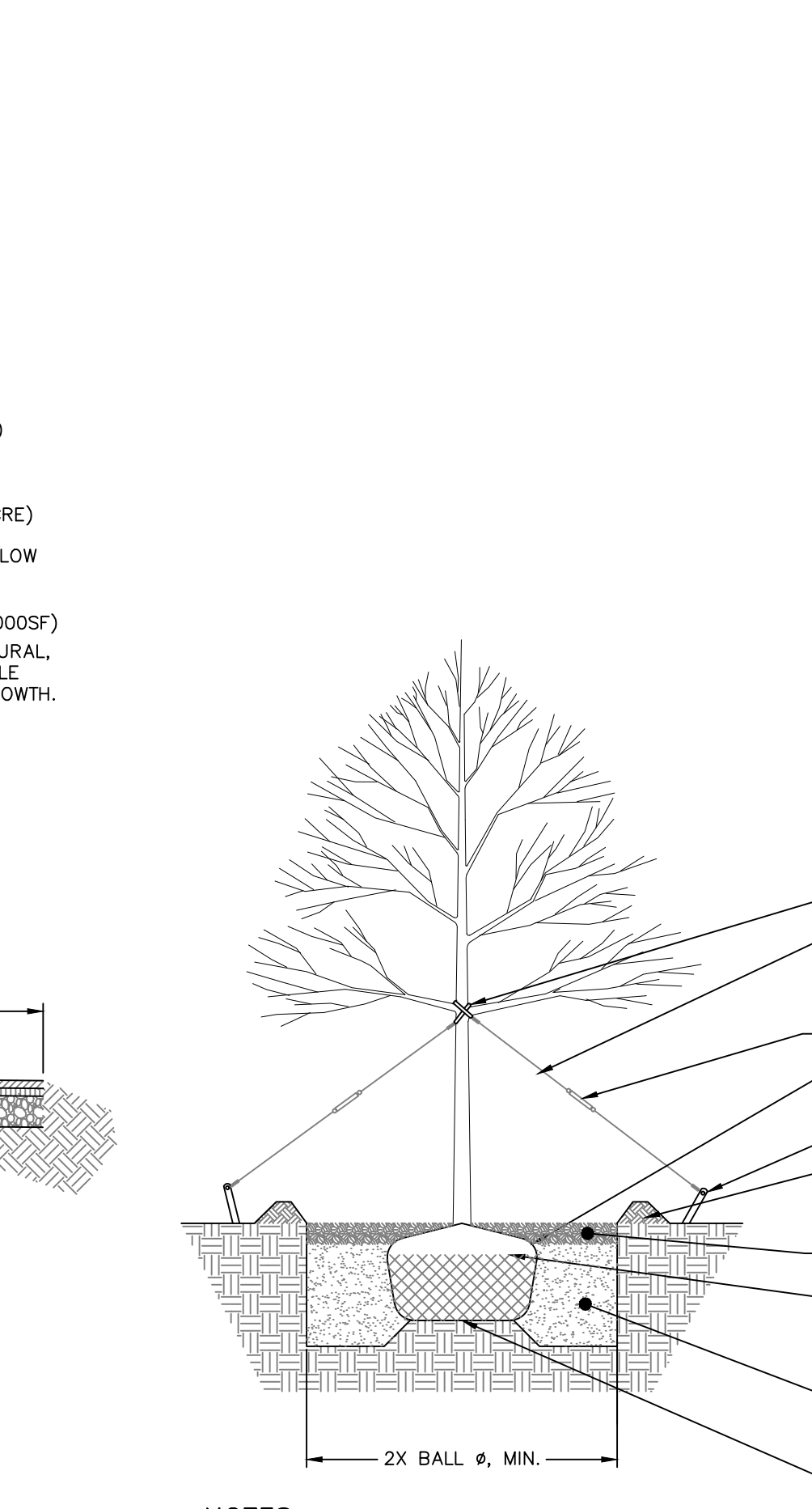


### WOOD STOCKADE FENCE DETAIL NOT TO SCALE



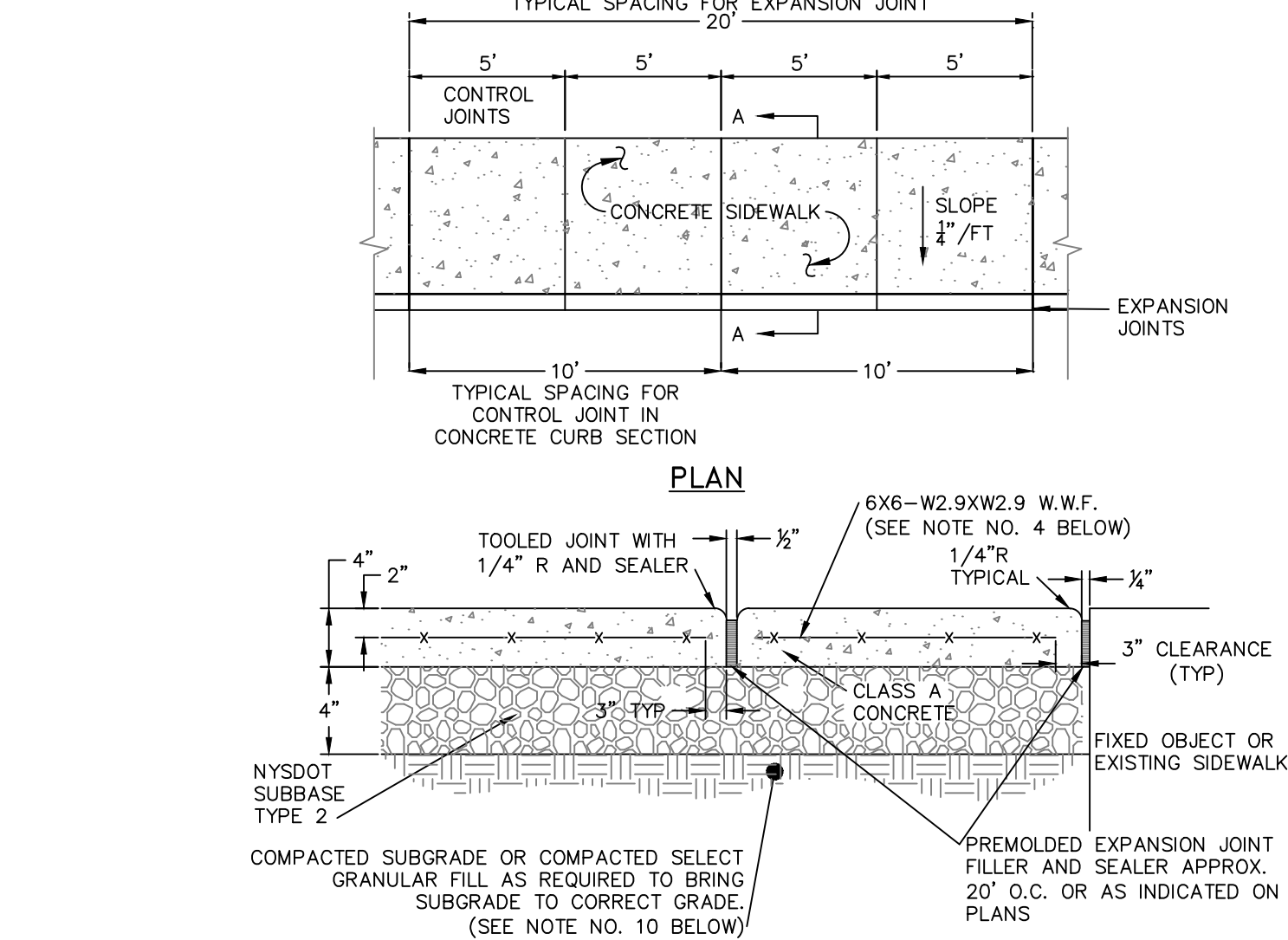
- NOTES:**
1. AREA CHOSEN FOR STOCKPILING OPERATIONS SHALL BE DRY AND STABLE.
  2. EACH PILE SHALL BE SURROUNDED WITH SILT FENCING, THEN STABILIZED WITH VEGETATION OR COVERED.

### TEMPORARY SOIL STOCKPILE DETAIL NOT TO SCALE



- NOTES:**
1. PROPOSED TREES TO BE RED MAPLE. REFER TO SHEET 2 PLANS FOR LOCATIONS.

### TREE PLANTING DETAIL NOT TO SCALE



### EXPANSION JOINT

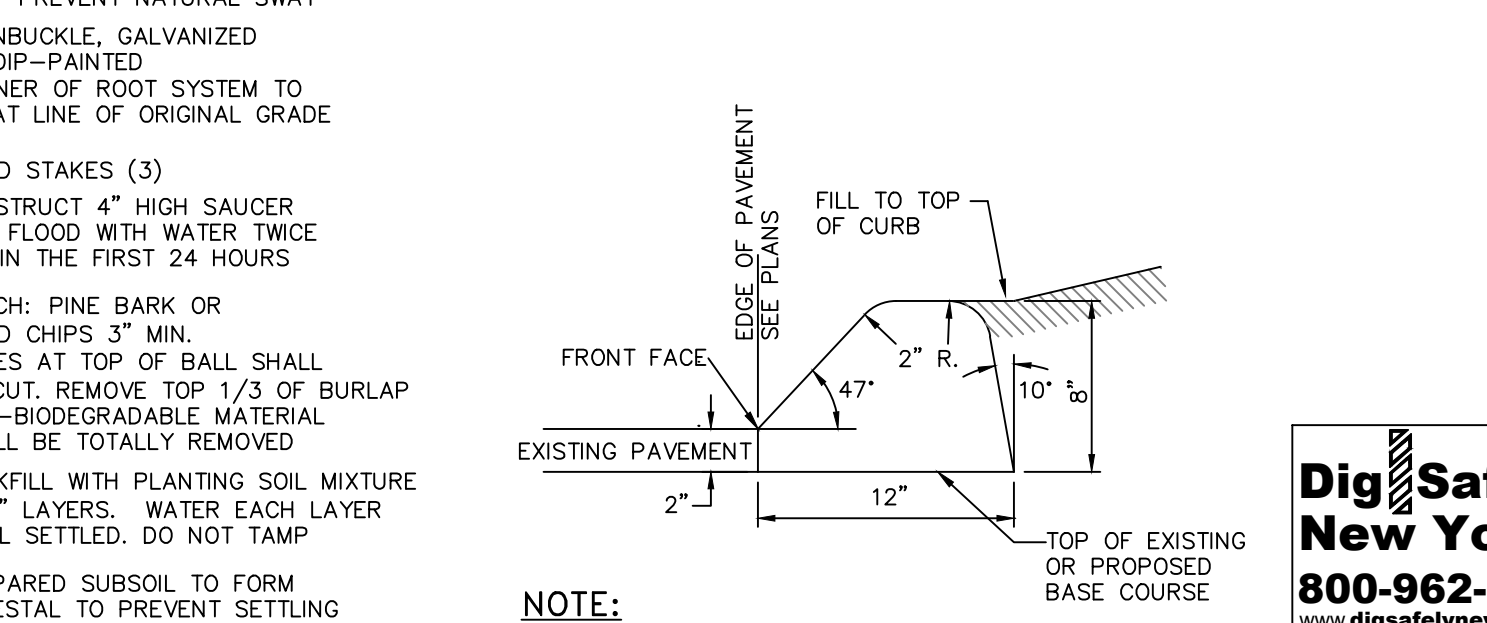
- NOTES:**
1. 10' SPACING OF CONTROL JOINTS SHALL BE USED FOR CAST IN PLACE CONCRETE CURBS.
  2. MATERIAL AND METHODS OF CONSTRUCTION SHALL BE IN CONFORMANCE WITH THE NEW YORK STATE DEPARTMENT OF TRANSPORTATION (NYSDOT) STANDARD SPECIFICATIONS FOR CONSTRUCTION AND MATERIALS, DATED JANUARY 2, 2002, AND ALL ADDENDA THERETO; THE ONLY EXCEPTION BEING THAT THE WORK OF THIS CONTRACT SHALL BE MEASURED IN ENGLISH UNITS.
  3. ALL CONCRETE SHALL BE 3,500 PSI CLASS A CONCRETE. CONCRETE MATERIALS, PLACEMENT, AND CONSTRUCTION SHALL CONFORM WITH SECTION 500 OF THE ABOVE REFERENCED NYSDOT STANDARD SPECIFICATIONS.
  4. REINFORCING STEEL FOR CONCRETE SHALL CONFORM WITH SECTION 556 - REINFORCING STEEL FOR CONCRETE STRUCTURES OF THE ABOVE REFERENCED NYSDOT STANDARD SPECIFICATIONS.
  5. ALL EXPOSED SURFACED SHALL HAVE A BROOM TEXTURED FINISH.
  6. EXPANSION JOINTS SHALL BE LOCATED A MAXIMUM OF 20' ON CENTER, OR AS INDICATED ON PLANS.
  7. JOINTS SHALL NOT BE SAW CUT.
  8. EXPOSED CONCRETE SURFACES SHALL BE TREATED WITH "SUREBOND"/"SAFEbond" SB-7000 INTENSIFIER BRIGHT PROTECTOR AND SIDEWALK SEALER, OR EQUAL. RATE AND METHOD OF APPLICATION SHALL BE IN ACCORDANCE WITH MANUFACTURE'S RECOMMENDATIONS.
  9. SUBBASE MATERIAL SHALL CONFORM WITH SECTION 304 OF THE ABOVE REFERENCED NYSDOT STANDARD.
  10. WHERE IT IS NECESSARY TO PLACE FILL FOR PURPOSE OF BRINGING THE SUBGRADE ELEVATION UP TO A SPECIFIED GRADE, THE FILL MATERIAL PLACED SHALL BE IN CONFORMANCE WITH SECTION 203-EXCAVATION AND EMBANKMENT OF THE ABOVE REFERENCED NYSDOT STANDARD SPECIFICATIONS.
  11. ALL WORK SHALL CONFORM WITH SECTION 608-SIDEWALK, DRIVEWAYS, AND BICYCLE PATHS OF THE ABOVE REFERENCED NYSDOT STANDARD SPECIFICATIONS.
  12. CONCRETE SHALL BE SEALED WITH A SALT RESISTANT SEALER.

### CONCRETE SIDEWALK DETAIL NOT TO SCALE



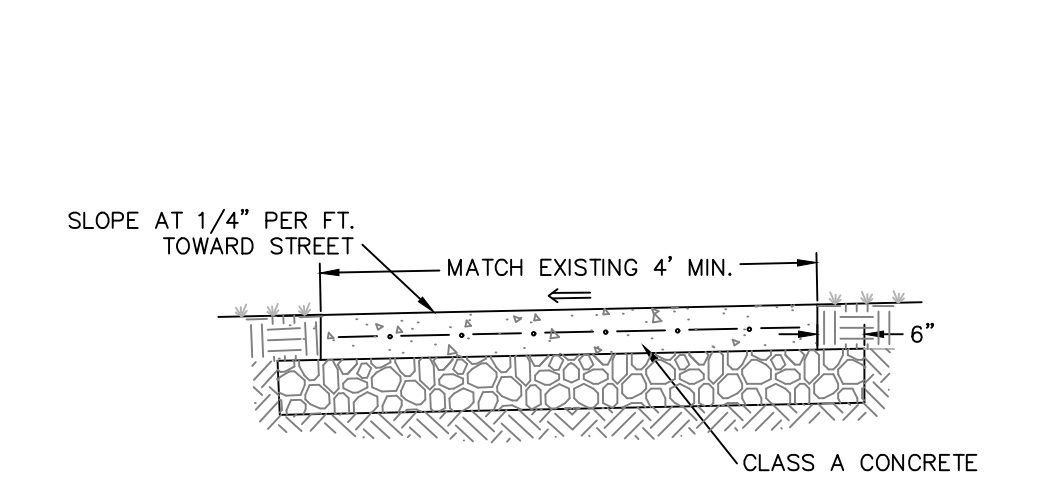
- NOTES:**
1. FILTER CLOTH TO BE FASTENED SECURELY TO WOVEN WIRE FENCE WITH TIES SPACED EVERY 24" AT TOP AND MID SECTION.
  2. WHEN TWO SECTIONS OF FILTER CLOTH ADJOIN EACH OTHER THEY SHALL BE OVER-LAPPED BY SIX INCHES AND FOLDED. FILTER CLOTH SHALL BE EITHER FILTER X, MIRAFI 100X, STABILINKA T140N OR APPROVED EQUAL.
  3. PREFABRICATED UNITS SHALL BE GEOTAB, ENVIROFENCE OR APPROVED EQUAL.
  4. MAINTENANCE SHALL BE PERFORMED AS NEEDED AND MATERIAL REMOVED WHEN "BULGES" DEVELOP IN THE SILT FENCE.

### SILT FENCE DETAIL NOT TO SCALE

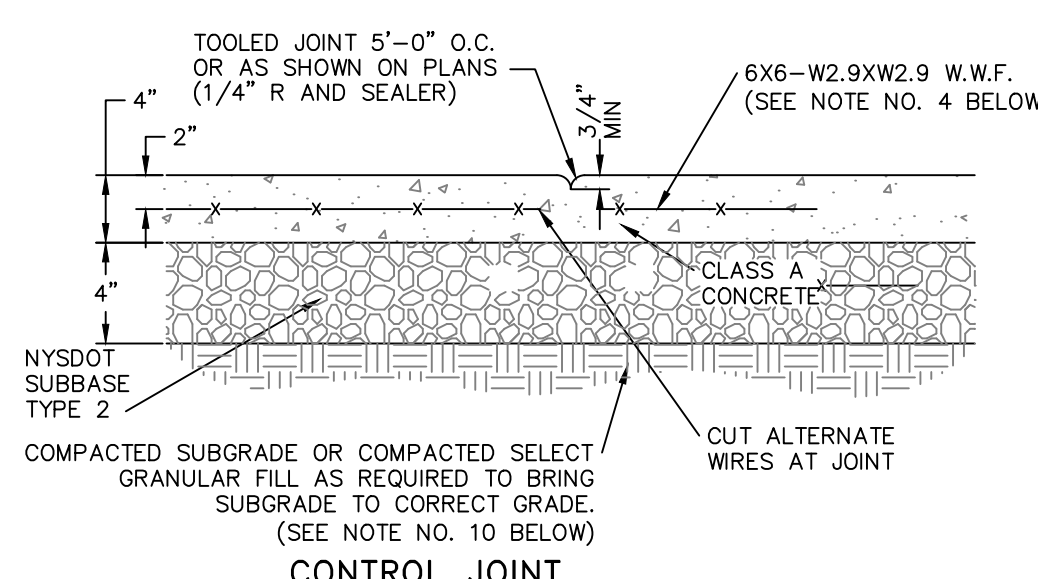


- NOTE:**
- DIMENSIONS SHOWN ARE STANDARD. ADJUSTMENTS TO THE ABOVE DIMENSIONS SHALL BE MADE TO MATCH EXISTING ASPHALT CURB.

### ASPHALT CURB DETAIL NOT TO SCALE



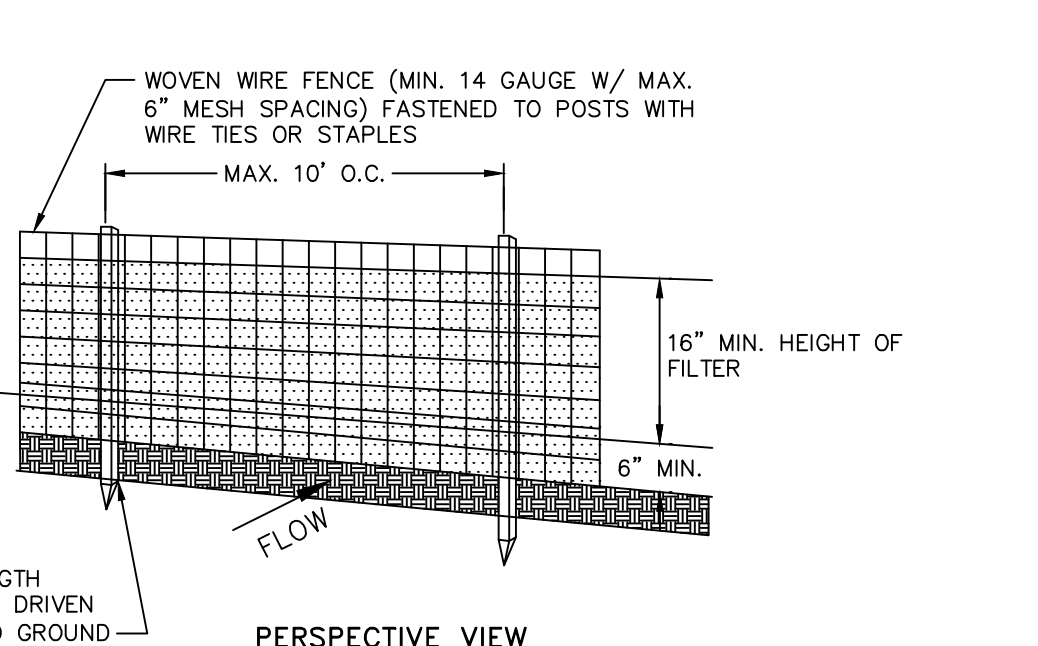
### SECTION A-A



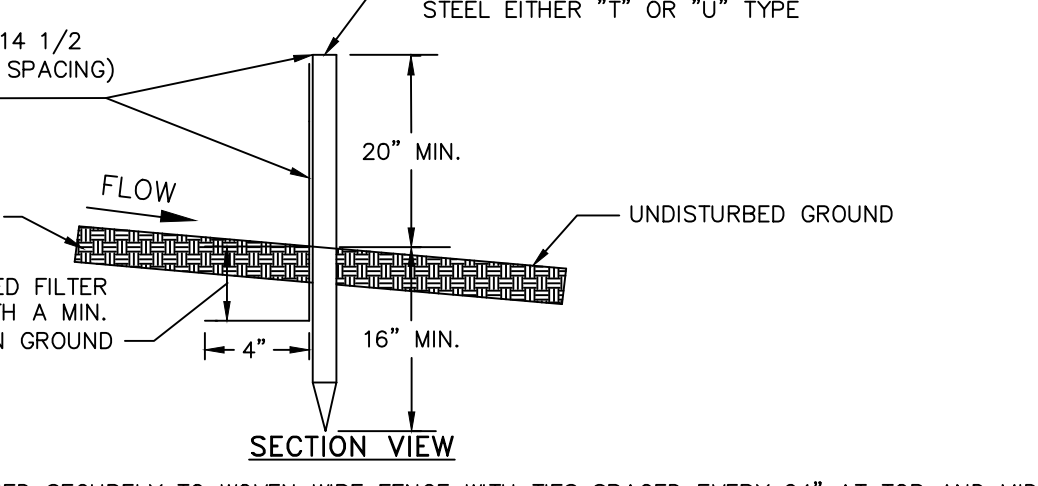
### CONTROL JOINT

- NOTES:**
1. 10' SPACING OF CONTROL JOINTS SHALL BE USED FOR CAST IN PLACE CONCRETE CURBS.
  2. MATERIAL AND METHODS OF CONSTRUCTION SHALL BE IN CONFORMANCE WITH THE NEW YORK STATE DEPARTMENT OF TRANSPORTATION (NYSDOT) STANDARD SPECIFICATIONS FOR CONSTRUCTION AND MATERIALS, DATED JANUARY 2, 2002, AND ALL ADDENDA THERETO; THE ONLY EXCEPTION BEING THAT THE WORK OF THIS CONTRACT SHALL BE MEASURED IN ENGLISH UNITS.
  3. ALL CONCRETE SHALL BE 3,500 PSI CLASS A CONCRETE. CONCRETE MATERIALS, PLACEMENT, AND CONSTRUCTION SHALL CONFORM WITH SECTION 500 OF THE ABOVE REFERENCED NYSDOT STANDARD SPECIFICATIONS.
  4. REINFORCING STEEL FOR CONCRETE SHALL CONFORM WITH SECTION 556 - REINFORCING STEEL FOR CONCRETE STRUCTURES OF THE ABOVE REFERENCED NYSDOT STANDARD SPECIFICATIONS.
  5. ALL EXPOSED SURFACED SHALL HAVE A BROOM TEXTURED FINISH.
  6. EXPANSION JOINTS SHALL BE LOCATED A MAXIMUM OF 20' ON CENTER, OR AS INDICATED ON PLANS.
  7. JOINTS SHALL NOT BE SAW CUT.
  8. EXPOSED CONCRETE SURFACES SHALL BE TREATED WITH "SUREBOND"/"SAFEbond" SB-7000 INTENSIFIER BRIGHT PROTECTOR AND SIDEWALK SEALER, OR EQUAL. RATE AND METHOD OF APPLICATION SHALL BE IN ACCORDANCE WITH MANUFACTURE'S RECOMMENDATIONS.
  9. SUBBASE MATERIAL SHALL CONFORM WITH SECTION 304 OF THE ABOVE REFERENCED NYSDOT STANDARD.
  10. WHERE IT IS NECESSARY TO PLACE FILL FOR PURPOSE OF BRINGING THE SUBGRADE ELEVATION UP TO A SPECIFIED GRADE, THE FILL MATERIAL PLACED SHALL BE IN CONFORMANCE WITH SECTION 203-EXCAVATION AND EMBANKMENT OF THE ABOVE REFERENCED NYSDOT STANDARD SPECIFICATIONS.
  11. ALL WORK SHALL CONFORM WITH SECTION 608-SIDEWALK, DRIVEWAYS, AND BICYCLE PATHS OF THE ABOVE REFERENCED NYSDOT STANDARD SPECIFICATIONS.
  12. CONCRETE SHALL BE SEALED WITH A SALT RESISTANT SEALER.

### CONCRETE SIDEWALK DETAIL NOT TO SCALE



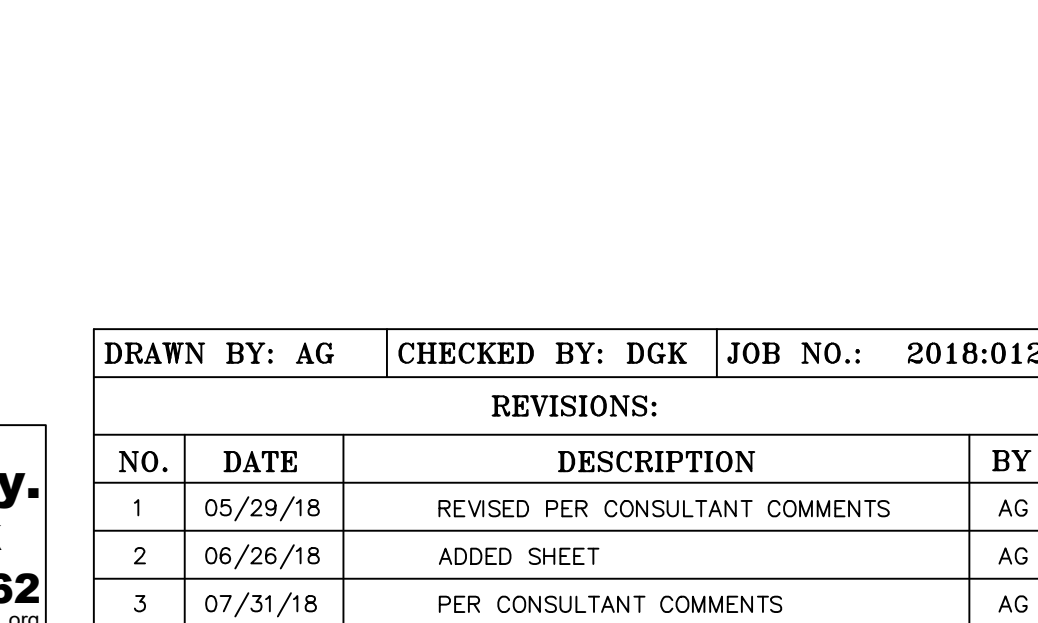
### PERSPECTIVE VIEW



### SECTION VIEW

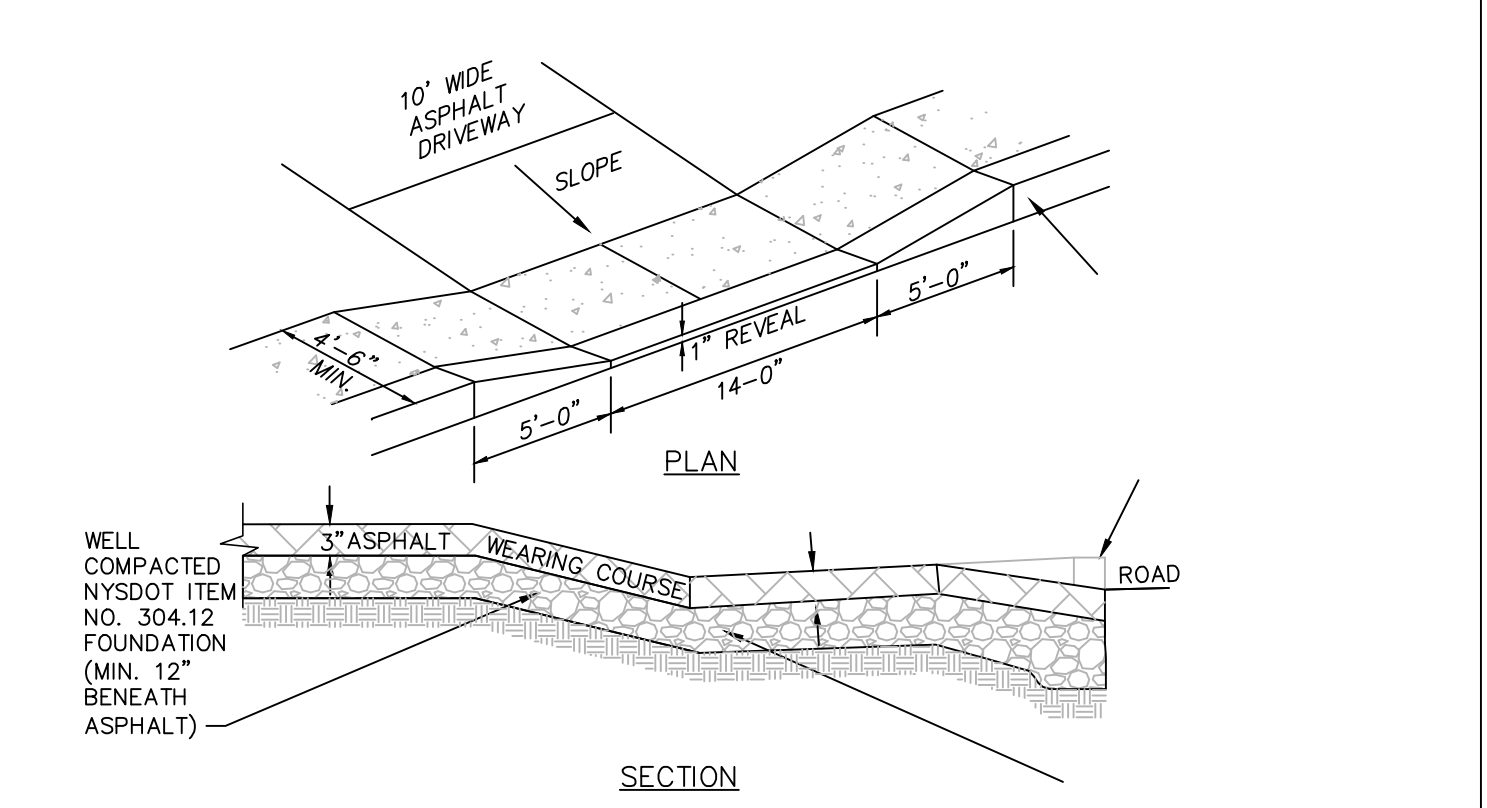
- NOTES:**
1. FILTER CLOTH TO BE FASTENED SECURELY TO WOVEN WIRE FENCE WITH TIES SPACED EVERY 24" AT TOP AND MID SECTION.
  2. WHEN TWO SECTIONS OF FILTER CLOTH ADJOIN EACH OTHER THEY SHALL BE OVER-LAPPED BY SIX INCHES AND FOLDED. FILTER CLOTH SHALL BE EITHER FILTER X, MIRAFI 100X, STABILINKA T140N OR APPROVED EQUAL.
  3. PREFABRICATED UNITS SHALL BE GEOTAB, ENVIROFENCE OR APPROVED EQUAL.
  4. MAINTENANCE SHALL BE PERFORMED AS NEEDED AND MATERIAL REMOVED WHEN "BULGES" DEVELOP IN THE SILT FENCE.

### SILT FENCE DETAIL NOT TO SCALE



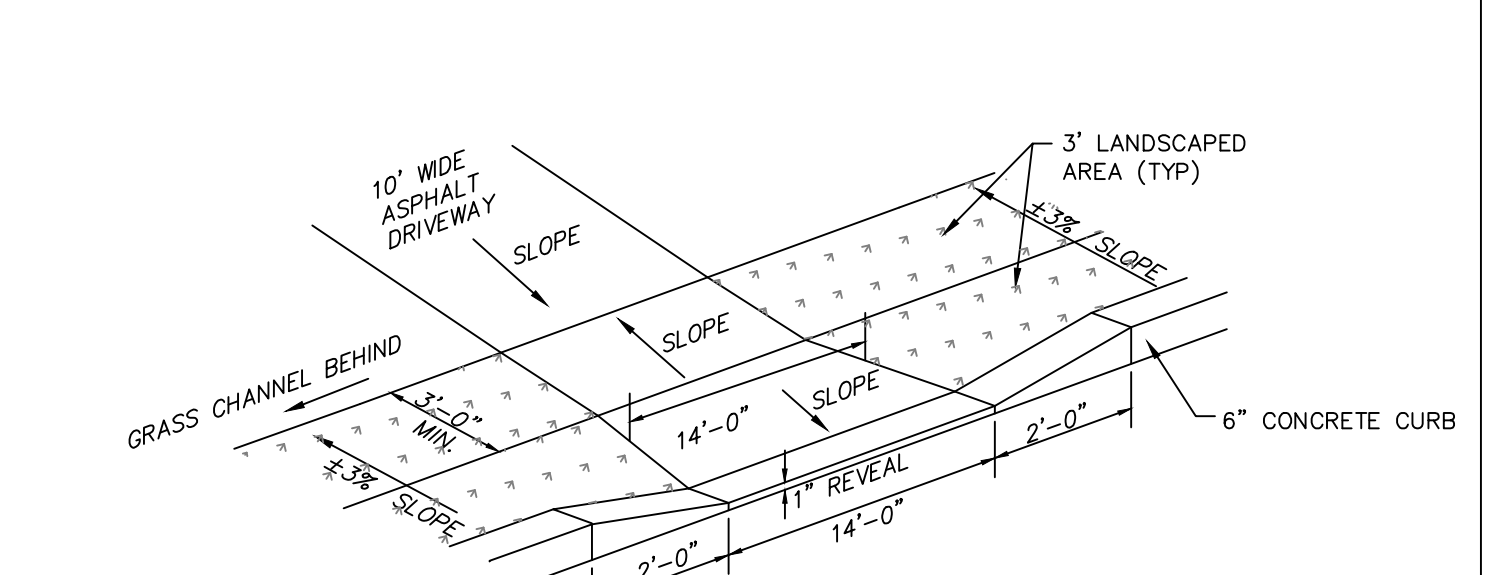
- NOTE:**
- DIMENSIONS SHOWN ARE STANDARD. ADJUSTMENTS TO THE ABOVE DIMENSIONS SHALL BE MADE TO MATCH EXISTING ASPHALT CURB.

### ASPHALT CURB DETAIL NOT TO SCALE

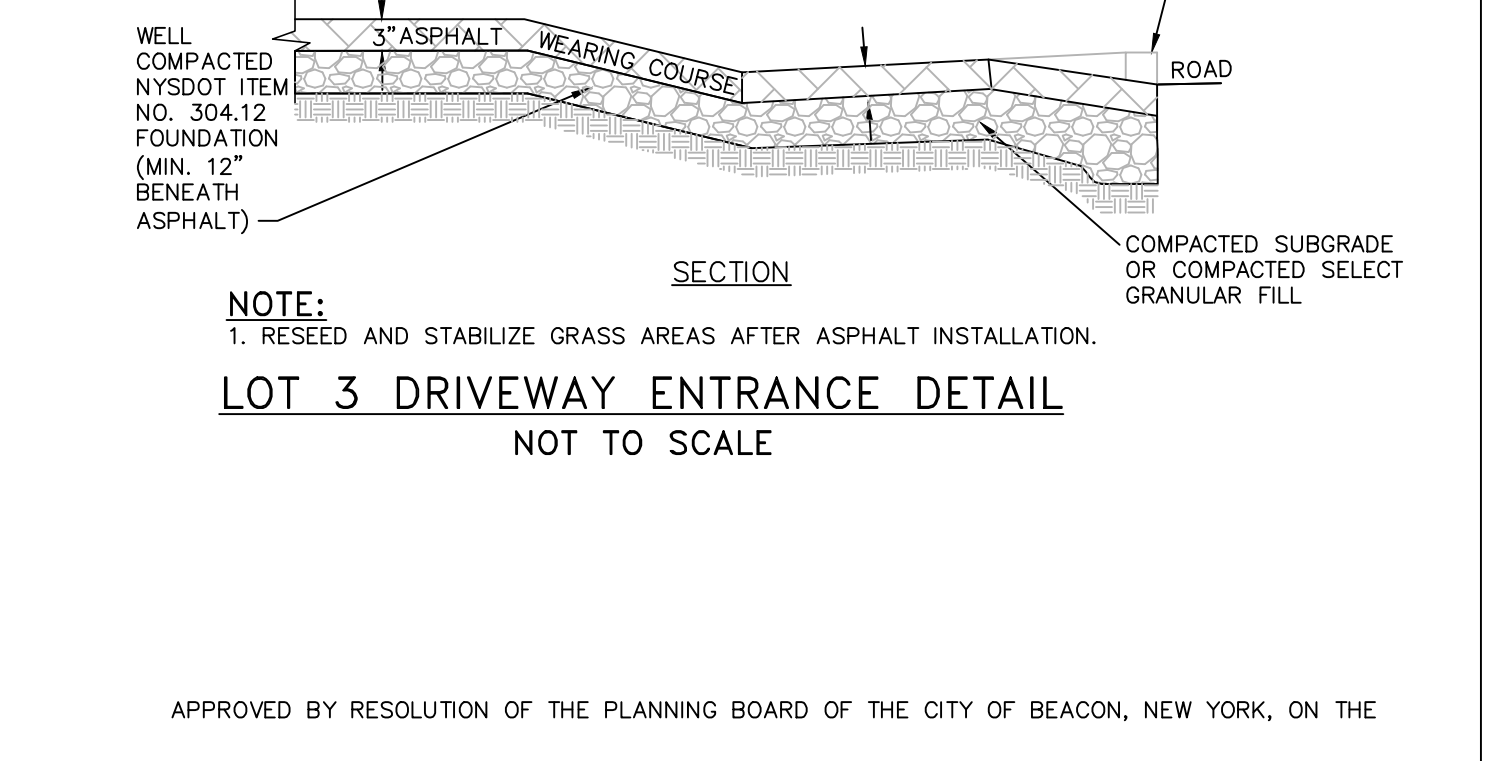


- NOTE:**
1. RESEED AND STABILIZE GRASS AREAS AFTER ASPHALT AND CONCRETE INSTALLATION.

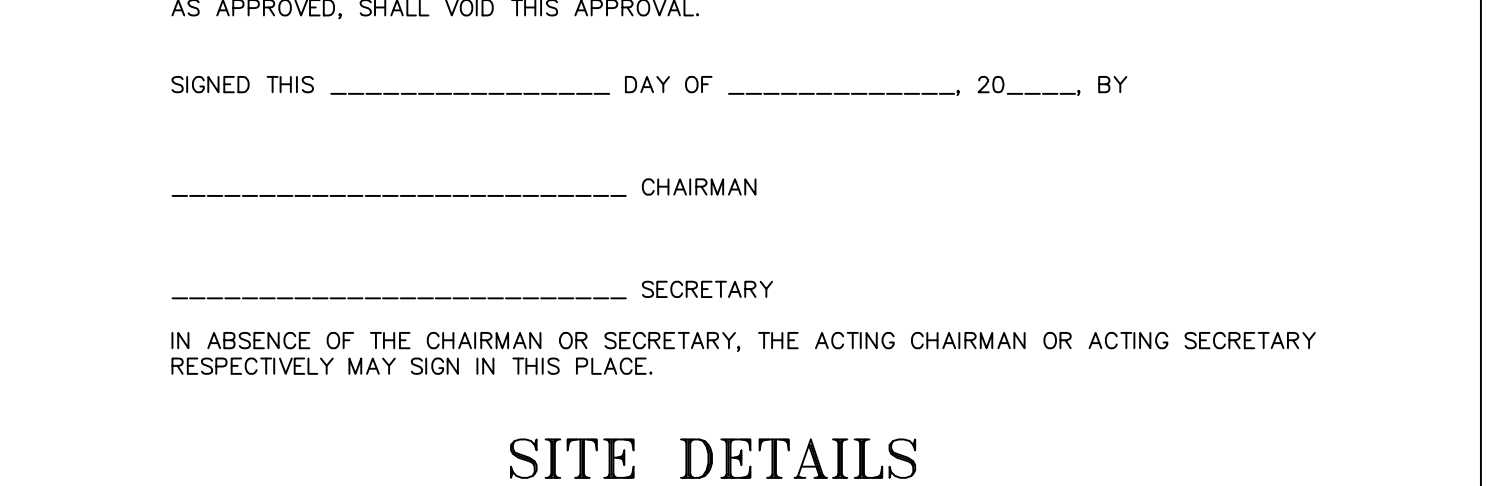
### LOT 2 DRIVEWAY ENTRANCE DETAIL NOT TO SCALE



### LOT 3 DRIVEWAY ENTRANCE DETAIL NOT TO SCALE



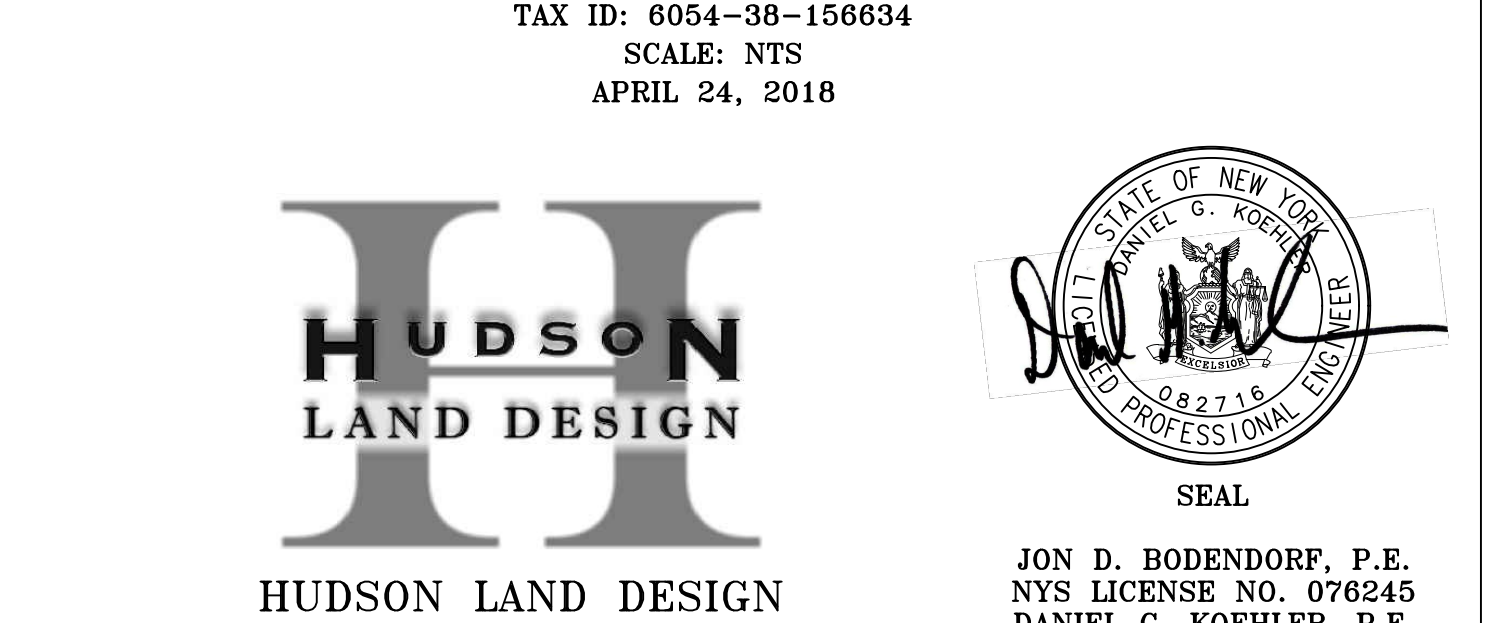
### PERSPECTIVE VIEW



### SECTION VIEW

- NOTES:**
1. RESEED AND STABILIZE GRASS AREAS AFTER ASPHALT INSTALLATION.

### LOT 3 DRIVEWAY ENTRANCE DETAIL NOT TO SCALE



- NOTE:**
- DIMENSIONS SHOWN ARE STANDARD. ADJUSTMENTS TO THE ABOVE DIMENSIONS SHALL BE MADE TO MATCH EXISTING ASPHALT CURB.

### ASPHALT CURB DETAIL NOT TO SCALE

## SITE DETAILS 38 ST. LUKES SUBDIVISION

38 ST. LUKES PLACE  
CITY OF BEACON  
DUTCHESS COUNTY, NEW YORK  
TAX ID: 6054-38-156634  
SCALE: NTS  
APRIL 24, 2018

**HUDSON LAND DESIGN**

HUDSON LAND DESIGN  
PROFESSIONAL ENGINEERING P.C.  
174 MAIN STREET  
BEACON, NEW YORK 12508  
PH: 845-440-6926 F: 845-440-6637

**SEAL**

JON D. BODENDORF, P.E.  
NYS LICENSE NO. 076245  
DANIEL G. KOEHLER, P.E.  
NYS LICENSE NO. 082716

**SHEET: 5 OF 5**