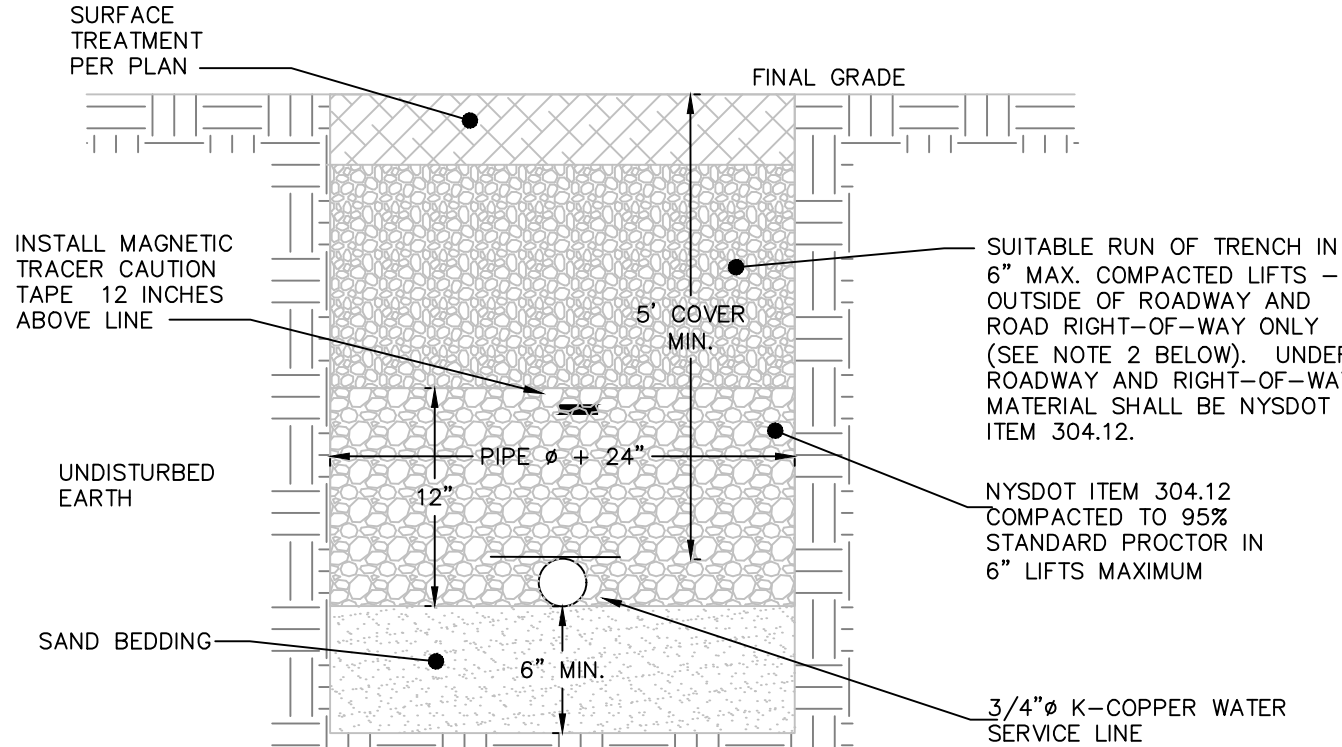


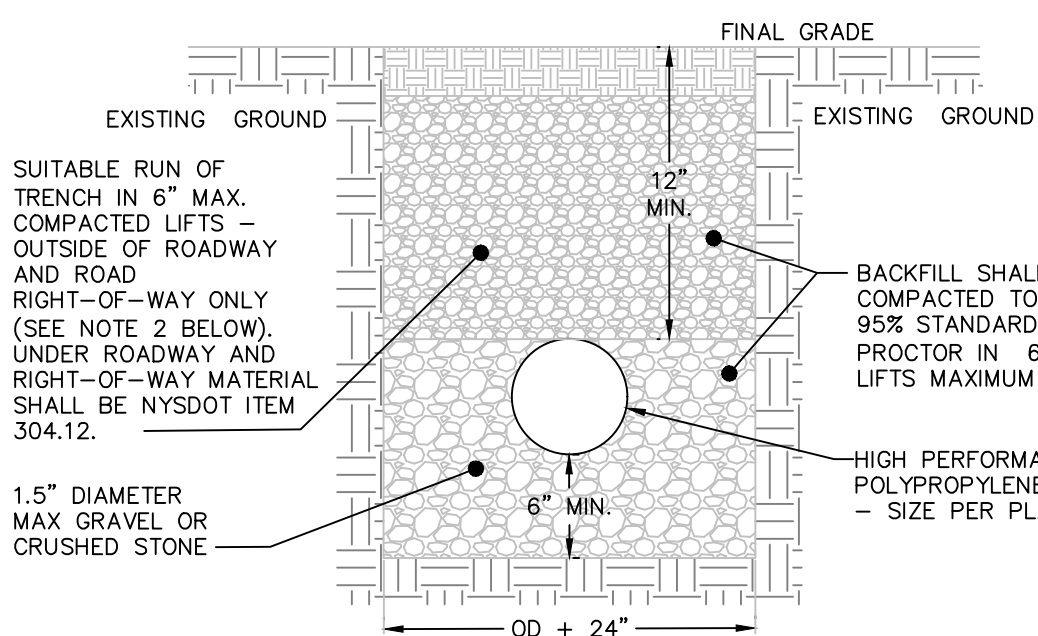
- NOTES:**
1. A MINIMUM 5' COVER SHALL BE PROVIDED ON THE WATER SERVICE LINE (CONDITIONED ON ACTUAL WATER MAIN DEPTH).
 2. CORPORATION STOP TO BE COMPRESSION TYPE BY MUELLER.
 3. WATER SERVICE LINE TO HAVE A "GOOSENECK" NEAR CORPORATION STOP.
 4. CORPORATION STOP TO BE INSTALLED IN THE UPPER HALF OF THE WATER MAIN AT AN ANGLE OF APPROXIMATELY 45° FROM HORIZONTAL.
 5. THE CONTRACTOR SHALL INSTALL A FULL BODIED STAINLESS STEEL TAPPING SLEEVE AT THE PROPOSED WATER SERVICE LOCATION.

WATER SERVICE CONNECTION DETAIL NOT TO SCALE



- NOTES:**
1. EXCAVATION AND TRENCHING SHALL MEET ALL OSHA REQUIREMENTS.
 2. SUITABLE RUN OF TRENCH SHALL NOT INCLUDE FROZEN MATERIALS, DEBRIS, ORGANIC MATERIALS, ENLOGATED PARTICLES, LARGE STONES OR OTHER UNSUITABLE MATERIALS. IF THE RUN OF TRENCH MATERIAL IS FOUND TO BE UNSUITABLE, A SUITABLE BACKFILL MATERIAL SHALL BE IMPORTED AND USED.
 3. IN AREAS WHERE 5' COVER REQUIREMENT CANNOT BE MET, THE CONTRACTOR SHALL PROVIDE PIPE INSULATION TO PREVENT FREEZING.
 4. IF WATER SERVICE AND SEWER SERVICE LINE CROSSINGS ARE NEEDED, PROVIDE 18\"/>

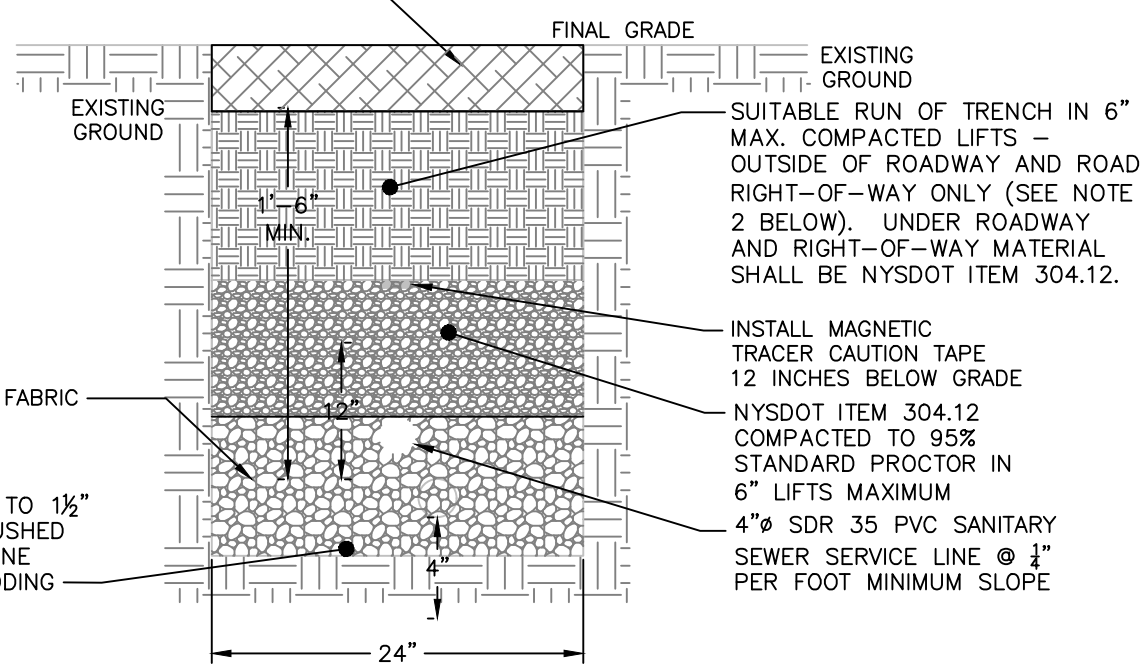
WATER SERVICE LINE TRENCH DETAIL NOT TO SCALE



- NOTES:**
1. EXCAVATION AND TRENCHING SHALL MEET ALL OSHA REQUIREMENTS.

STORM LINE TRENCH DETAIL NOT TO SCALE

SEE PAVEMENT SECTION, OR IN GRASSED AREAS, COMPLETE BACKFILL WITH A MINIMUM OF 3\"/>



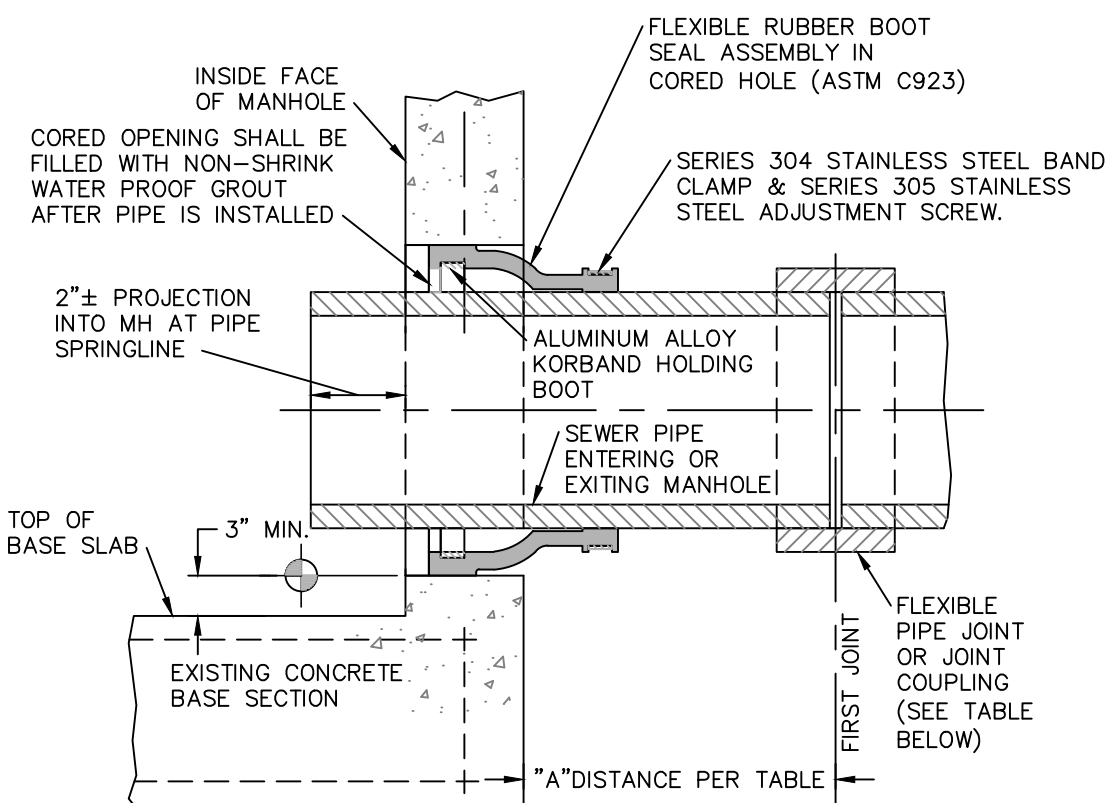
- NOTES:**
1. EXCAVATION AND TRENCHING SHALL MEET ALL OSHA REQUIREMENTS.
 2. SUITABLE RUN OF TRENCH SHALL NOT INCLUDE FROZEN MATERIALS, DEBRIS, ORGANIC MATERIALS, LARGE STONES OR OTHER UNSUITABLE MATERIALS. IF THE RUN OF TRENCH MATERIAL IS FOUND TO BE UNSUITABLE, A SUITABLE BACKFILL MATERIAL SHALL BE IMPORTED AND USED.

SANITARY SEWER SERVICE LINE TRENCH DETAIL NOT TO SCALE

OWNER'S CONSENT:

THE UNDERSIGNED OWNER OF THE PROPERTY HEREON STATES THAT HE IS FAMILIAR WITH THIS MAP, ITS CONTENTS AND ITS LEGENDS AND HEREBY CONSENTS TO ALL SAID TERMS AND CONDITIONS AS STATED HEREON.

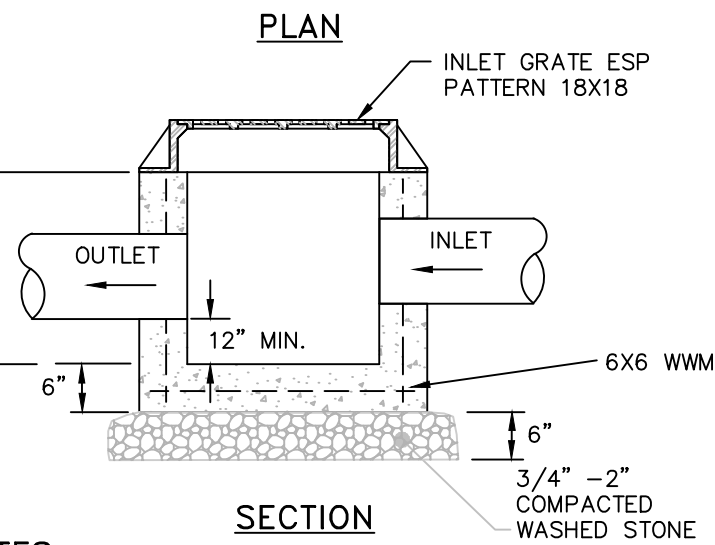
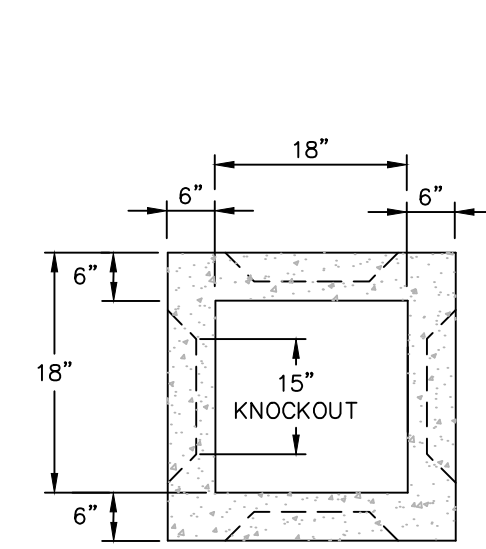
GARY JOSEPH OR TIM OWEN _____ DATE _____



SEWER PIPE TYPE	FLEXIBLE JOINT TYPE IN & OUT	"A" DISTANCE (FEET)
DUCTILE IRON	STD RUBBER GASKET PIPE JOINT ONLY	10' MAX
PVC	STD RUBBER GASKET PIPE JOINT ONLY	3' MAX

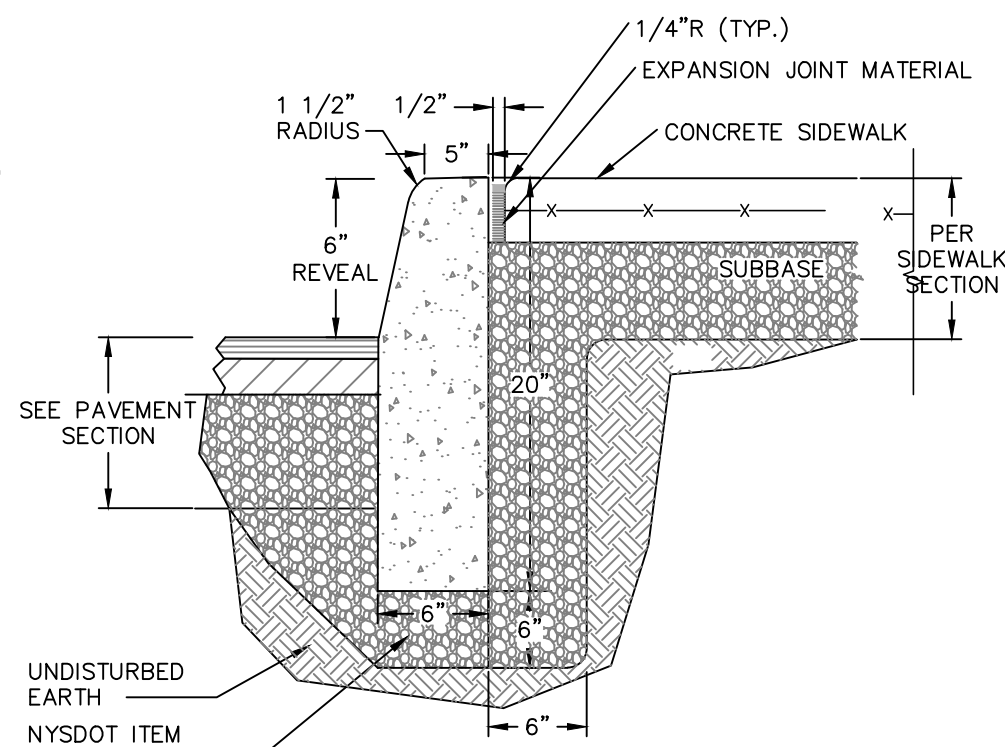
NOTE:
REFERENCE MANHOLE DETAIL(S) FOR REQUIRED INVERT CHANNEL CONFIGURATION.

CORED HOLE AND INSERTED BOOT DETAIL NOT TO SCALE



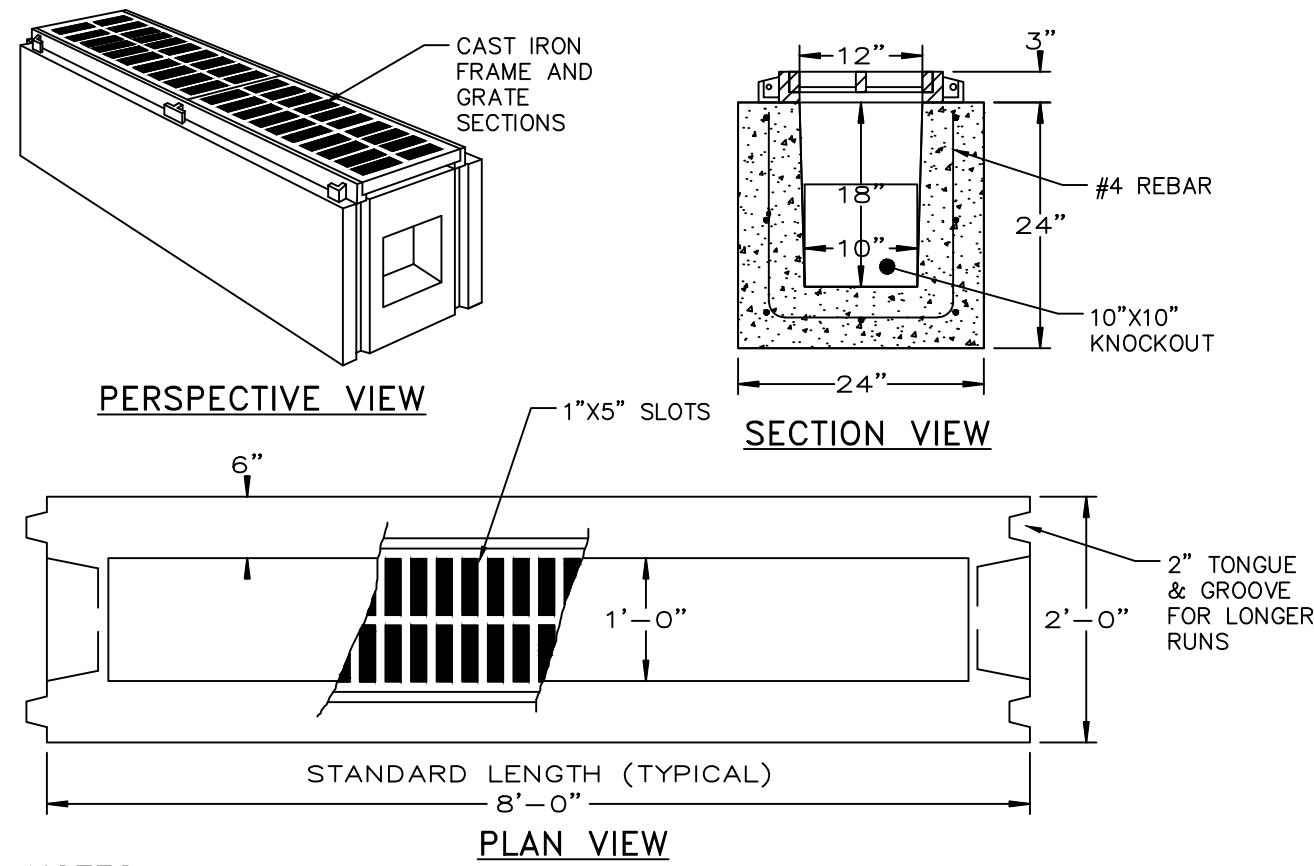
- NOTES:**
1. YARD INLET BASINS SHALL BE PRE CAST REINFORCED CONCRETE SHALL HAVE A MINIMUM 28-DAY COMPRESSIVE STRENGTH OF 4,000 PSI AND SHALL BE IN CONFORMANCE WITH ASTM 478-68. WALLS AND BASE SHALL BE ONE PIECE CONSTRUCTION. YARD INLET BASIN SHOWN BY EXPANDED SUPPLY PRODUCTS (ESP), 3330 ROUTE 9, COLD SPRING, NY (845) 265-3771.
 2. BACK FILL USING SELECT MATERIAL, COMPACTED IN 6\"/>

PRE-CAST CONCRETE YARD INLET DETAIL NOT TO SCALE



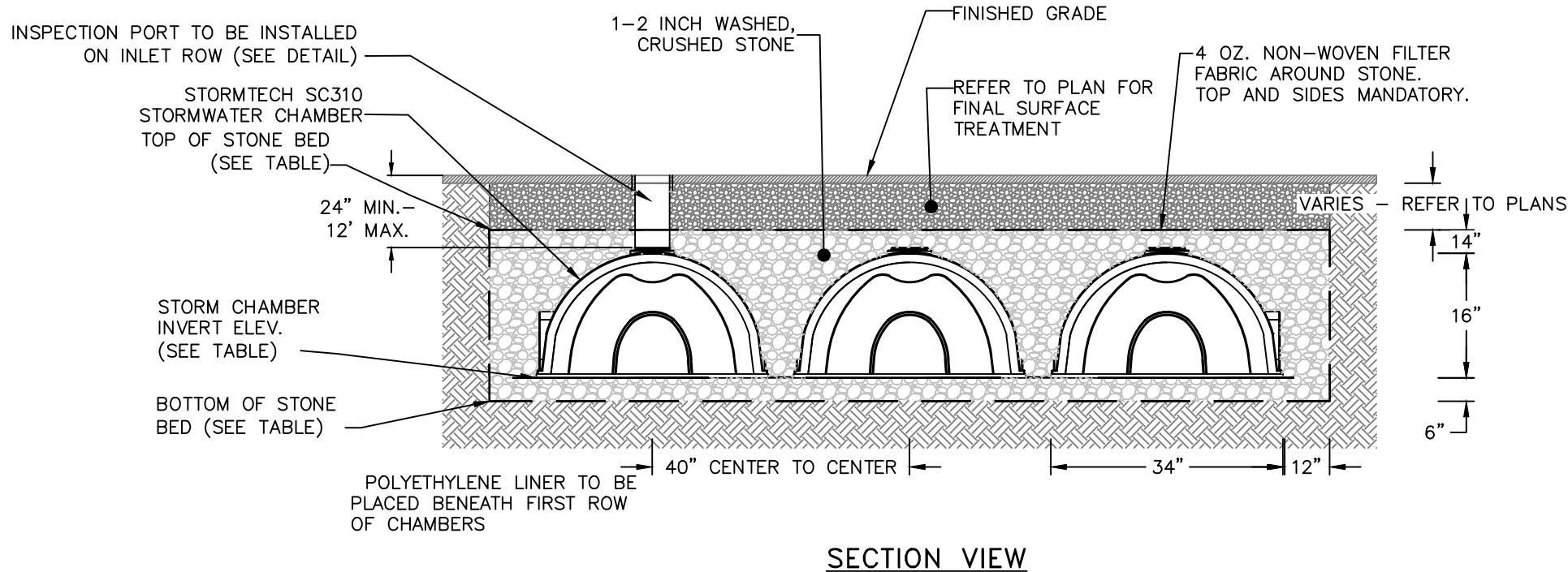
- NOTES:**
1. CONCRETE CURB SHALL BE 4,000 PSI CAST-IN-PLACE, AND IN ACCORDANCE WITH NYSDOT STANDARD SPECIFICATION SECTION 609.
 2. EXPANSION JOINTS OF 1/2\"/>

CAST-IN-PLACE CONCRETE CURB DETAIL NOT TO SCALE

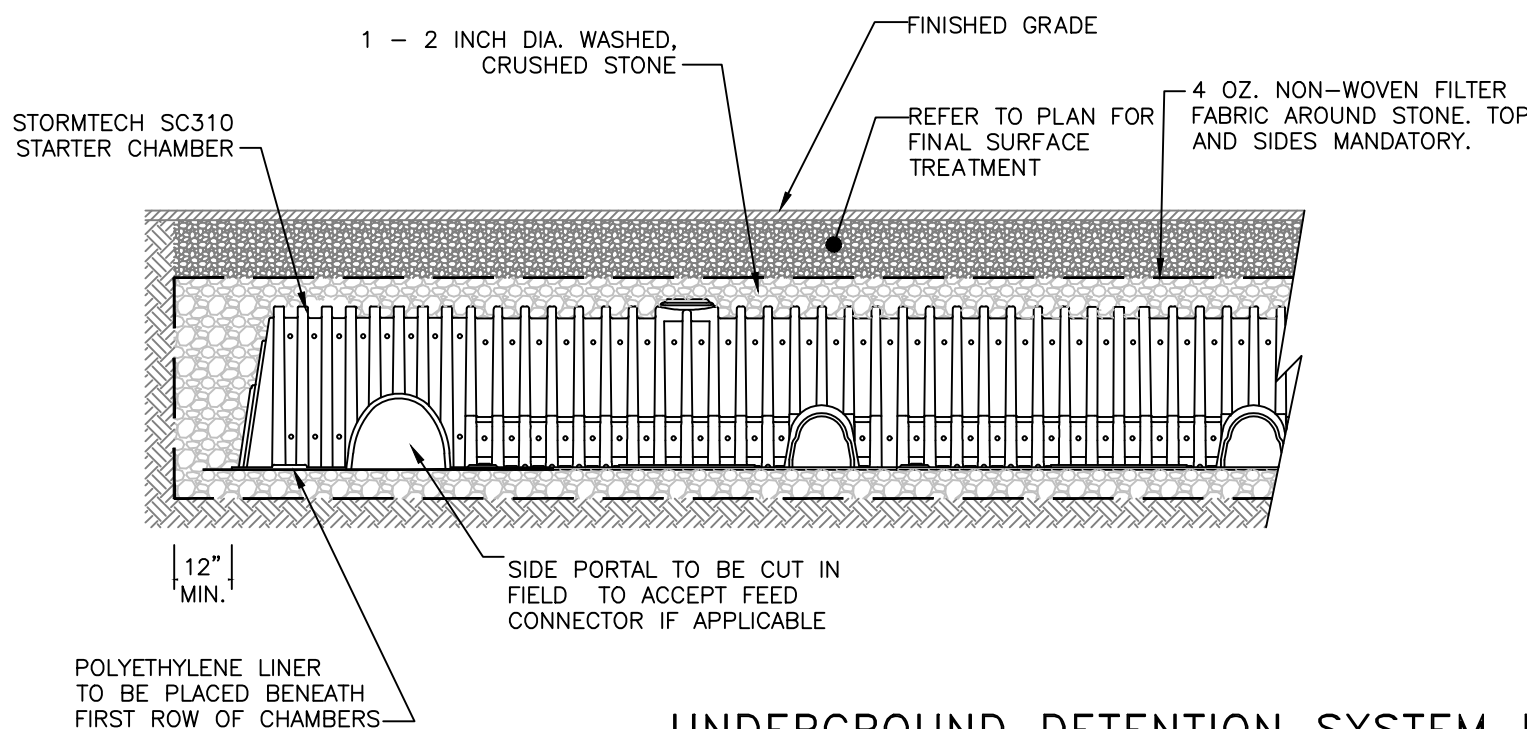


- NOTES:**
1. MATERIALS AND METHODS OF CONSTRUCTION SHALL BE IN CONFORMANCE WITH THE NEW YORK STATE DEPARTMENT OF TRANSPORTATION (NYSDOT) STANDARD SPECIFICATIONS FOR CONSTRUCTION AND MATERIALS, LATEST EDITION, AND ALL ADDENDA THERETO.
 2. REFER ALSO TO NYSDOT STANDARD SHEET 604-01.
 3. MINIMUM LOAD RATING TO BE H-20.

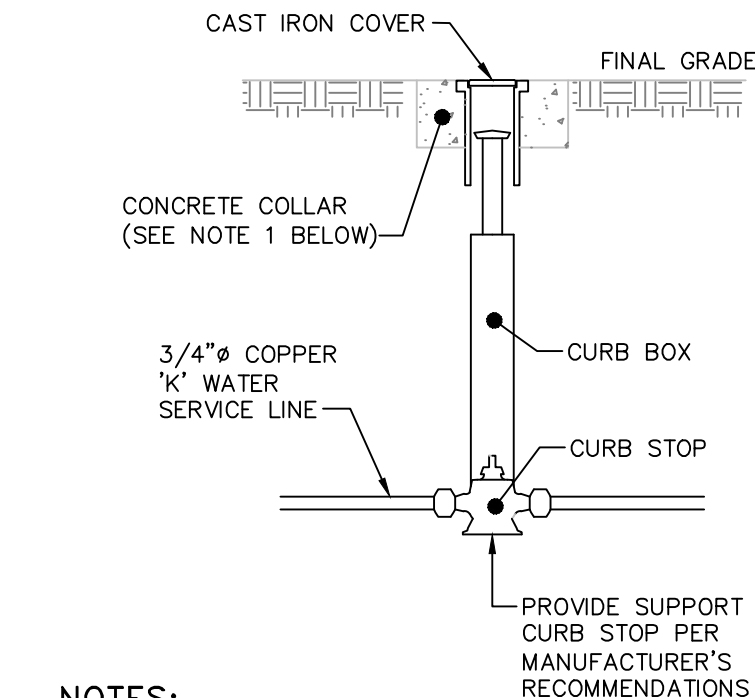
TRENCH DRAIN DETAIL NOT TO SCALE



SECTION VIEW

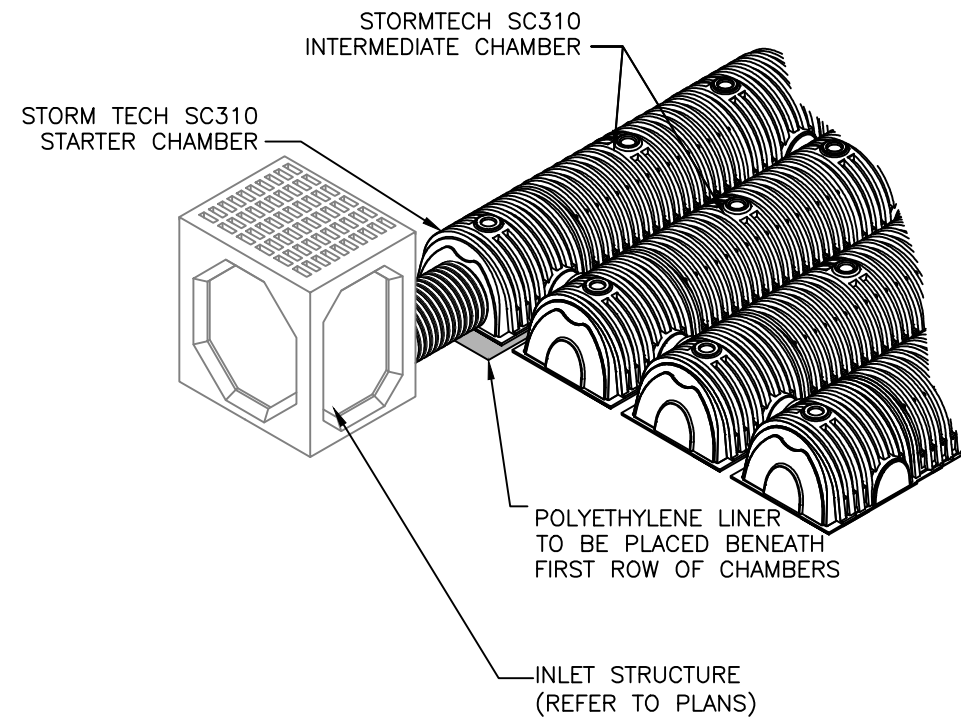


UNDERGROUND DETENTION SYSTEM DETAIL NOT TO SCALE



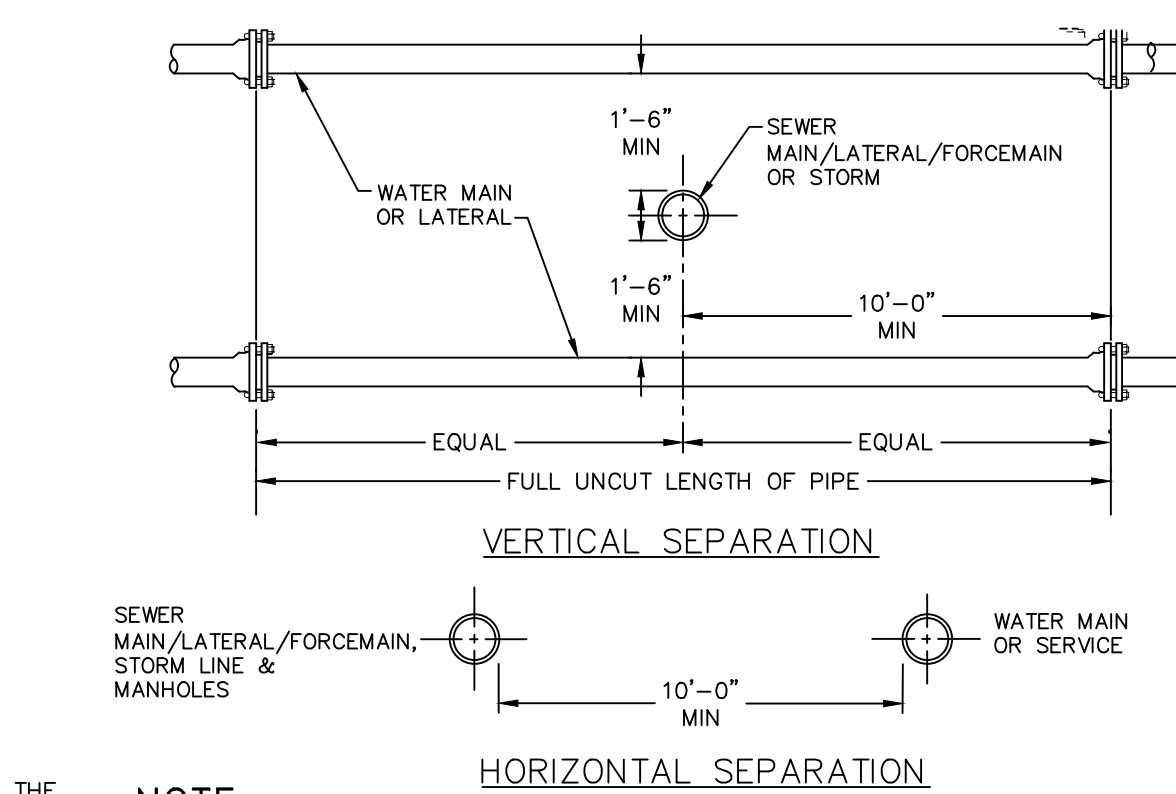
- NOTES:**
1. CONCRETE COLLAR TO BE PROVIDED IN AREAS THAT ARE NOT PAVED. THE COLLAR SHALL BE 6\"/>

WATER SHUT-OFF VALVE DETAIL NOT TO SCALE



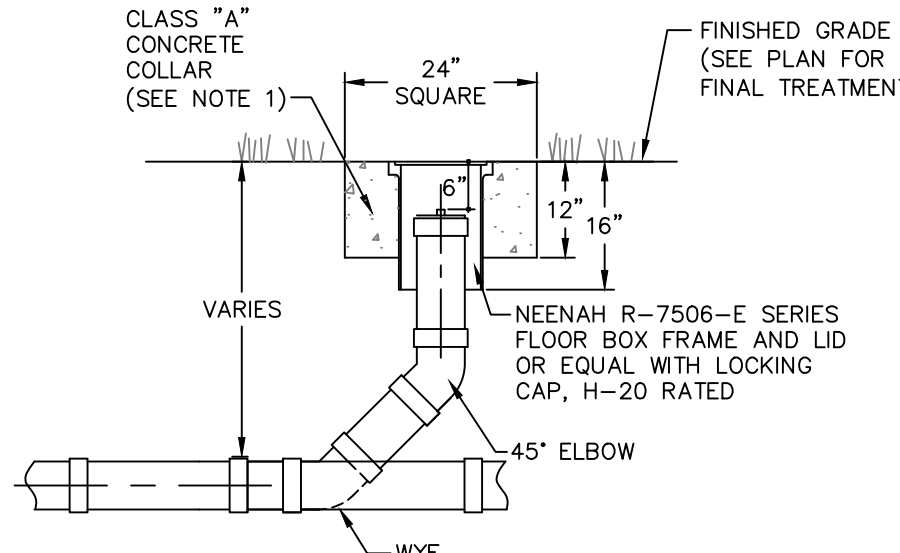
- NOTES:**
1. STORMTECH SC310 CHAMBERS BY STORMTECH, INC. OF ROCKY HILL, CT. ALL CHAMBERS SHALL BE INSTALLED IN ACCORDANCE WITH STORMTECH INC.'S CURRENTLY RECOMMENDED INSTALLATION GUIDELINES.
 2. THE BED OF THE SYSTEM FOOTPRINT SHALL BE LAID NEARLY LEVEL.
 3. THE CONTRACTOR SHALL NOTIFY THE DESIGN ENGINEER IF SUBSURFACE CONDITIONS IN THE AREAS OF THE INFILTRATOR TRENCHES IS NOT CONSISTENT WITH THE TEST PIT OR PERCOLATION DATA (E.G. GROUNDWATER OR BEDROCK ENCOUNTERED, SOIL PROPERTIES ARE NOT CONSISTENT, ETC.).

SYSTEM ID	BOTTOM OF STONE BED ELEVATION	CHAMBER INVERT	TOP OF STONE BED ELEVATION	STONE BED FOOTPRINT
LOT 2	138.7	139.2	141.7	186 S.F.
LOT 3	137.5	138.0	140.5	295 S.F.



- NOTE:**
- NO DEVIATION IN THE SEPARATION REQUIREMENTS WILL BE PERMITTED WITHOUT THE EXPRESS APPROVAL OF THE DUTCHESS COUNTY DEPARTMENT OF HEALTH AND THE CITY OF BEACON. CONCRETE ENCASEMENT OF WATERLINE OR OFFSETTING OF WATERLINE SHALL BE REQUIRED WHERE SEPARATION DISTANCES CANNOT BE MAINTAINED.

WATER LINE SEPARATION DETAIL NOT TO SCALE



- NOTES:**
1. CONCRETE COLLAR TO BE PROVIDED IN AREAS THAT ARE NOT PAVED. THE COLLAR SHALL BE 6\"/>

CLEANOUT DETAIL NOT TO SCALE

APPROVED BY RESOLUTION OF THE PLANNING BOARD OF THE CITY OF BEACON, NEW YORK, ON THE _____ DAY OF _____, 20____, SUBJECT TO ALL REQUIREMENTS AND CONDITIONS OF SAID RESOLUTION. ANY CHANGE, ERASURE, MODIFICATION OR REVISION OF THIS PLAT, AS APPROVED, SHALL VOID THIS APPROVAL.

SIGNED THIS _____ DAY OF _____, 20____, BY _____

CHAIRMAN

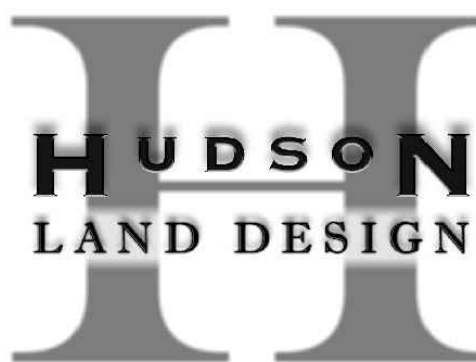
SECRETARY

IN ABSENCE OF THE CHAIRMAN OR SECRETARY, THE ACTING CHAIRMAN OR ACTING SECRETARY RESPECTIVELY MAY SIGN IN THIS PLACE.

DETAILS

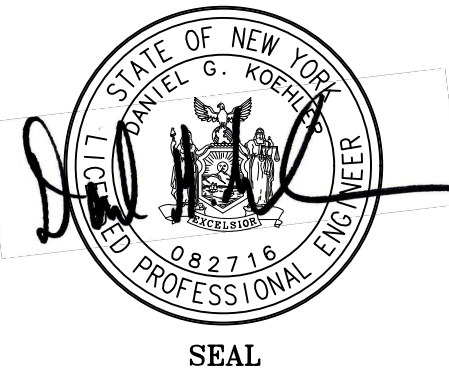
38 ST. LUKES SUBDIVISION

38 ST. LUKES PLACE
CITY OF BEACON
DUTCHESS COUNTY, NEW YORK
TAX ID: 6054-38-156634
SCALE: NTS
APRIL 24, 2018



HUDSON LAND DESIGN
PROFESSIONAL ENGINEERING P.C.

174 MAIN STREET
BEACON, NEW YORK 12508
PH: 845-440-6926 F: 845-440-6637



JON D. BODENDORF, P.E.
NYS LICENSE NO. 076245
DANIEL G. KOEHLER, P.E.
NYS LICENSE NO. 082716

SHEET: 4 OF 5

DRAWN BY: AG CHECKED BY: DGK JOB NO.: 2018-012

REVISIONS:			
NO.	DATE	DESCRIPTION	BY
1	05/29/18	REVISED PER CONSULTANT COMMENTS	AG
2	06/26/18	PER CONSULTANTS COMMENTS	AG
3	07/31/18	PER CONSULTANT COMMENTS	AG

Dig Safely.
New York
800-962-7962
www.digsafelynewyork.org

- ☐ Call Before You Dig
☐ Wait The Required Time
☐ Confirm Utility Response
☐ Respect the Marks
☐ Dig With Care