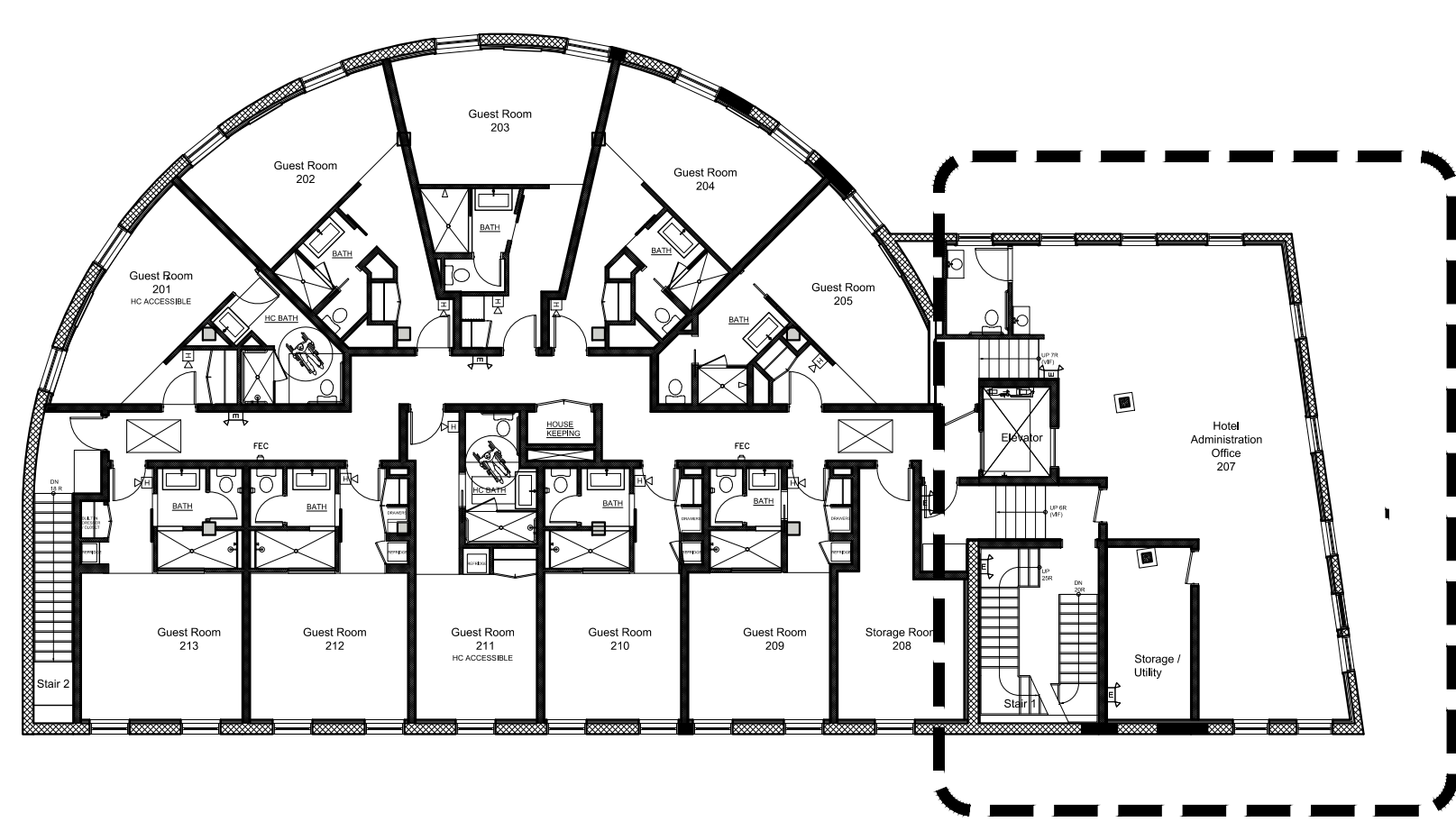


Upper Level Plan

1/8" = 1'-0"

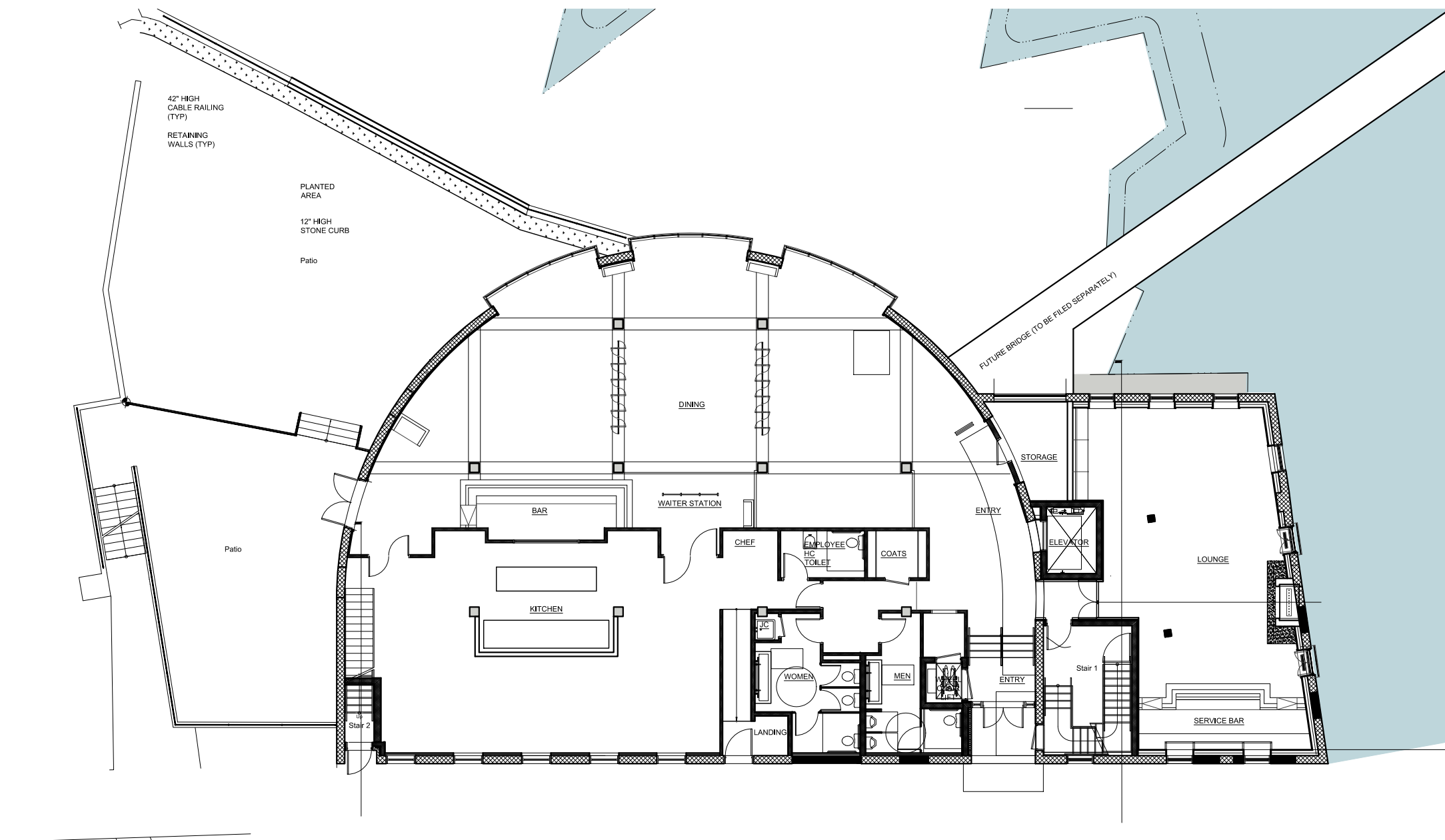


2nd Floor Plan

1/8" = 1'-0"

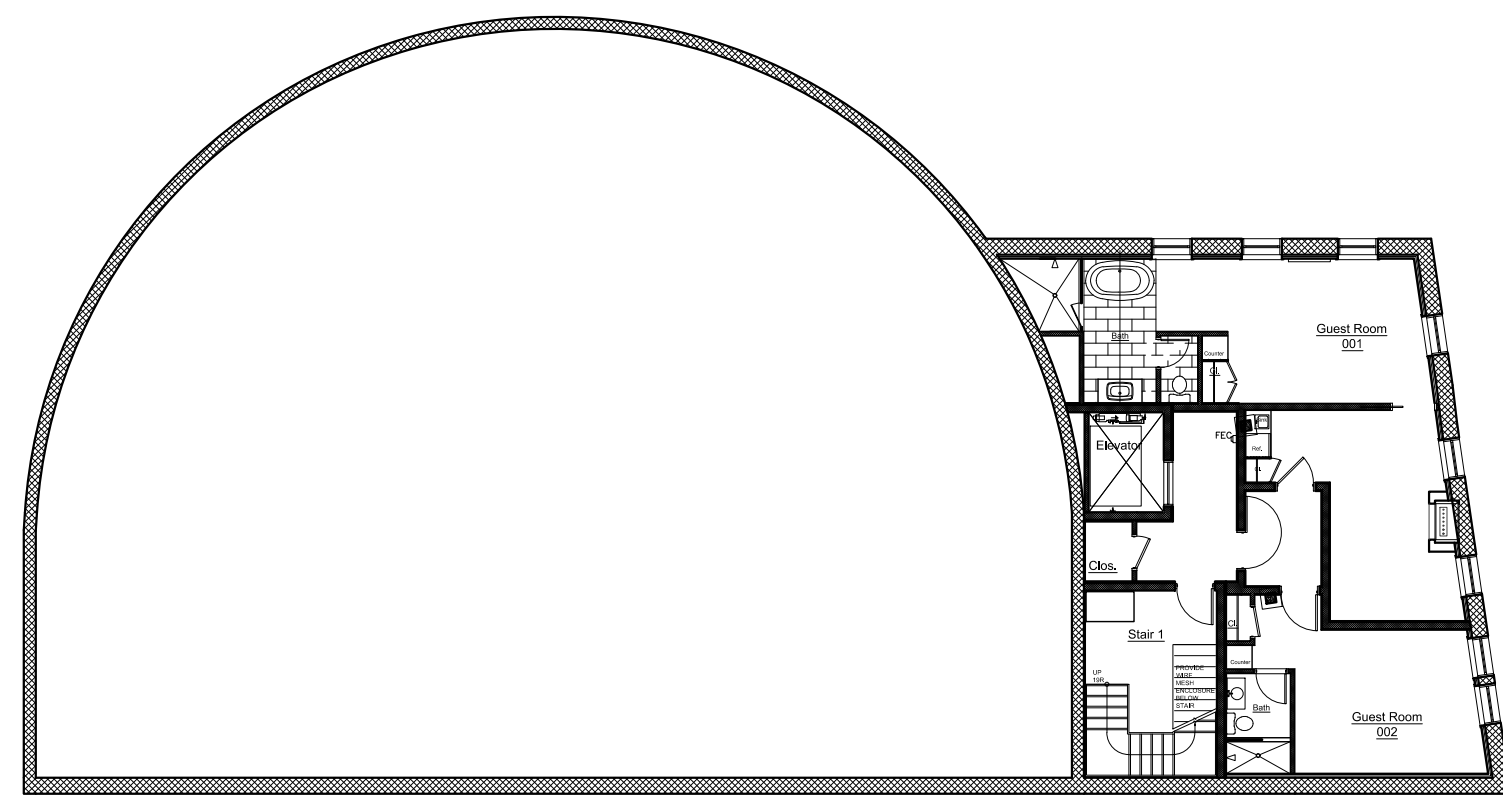
AMENDMENT SCOPE OF WORK:

REPLACE PRIVATE DINING ROOM  
WITH HOTEL ADMINISTRATION  
OFFICE SPACE



1st Floor Plan

1/8" = 1'-0"



Lower Level Plan

1/8" = 1'-0"



Elevation: South

1/8" = 1'-0"

NEW DOUBLE INSULATED DOUBLE HUNG  
WINDOWS - PELLA OR APPROVED EQUAL -  
COLOR: FOREST GREEN



Elevation: East

1/8" = 1'-0"

NEW DOUBLE INSULATED CASEMENT WINDOWS  
AT CLERESTORY - PELLA OR APPROVED EQUAL -  
COLOR: FOREST GREEN

STAINLESS STEEL CABLE RAIL

NEW PAINTED HM DOOR  
TO FIRE STAIR



Elevation: West

1/8" = 1'-0"

STAINLESS STEEL CABLE RAIL

STONE RETAINING WALL

NEW DOUBLE INSULATED CASEMENT WINDOWS  
AT CLERESTORY - PELLA OR APPROVED EQUAL -  
COLOR: FOREST GREEN

NOTE: THESE ELEVATIONS HAVE BEEN  
REVIEWED AND APPROVED BY THE  
PLANNING BOARD IN A PREVIOUS  
SUBMITTAL. THEY ARE INCLUDED HERE  
FOR REFERENCE ONLY



Elevation: North

1/8" = 1'-0"

REPAIR, REPOINT, AND POWER WASH EXISTING  
BRICK. INFILL ABANDONED OPENINGS TO  
MATCH EXISTING BRICK WALL WITH NO VISIBLE  
SEAMS (TYPICAL)

PAINTED STEEL SURROUND AT NEW MASONRY  
OPENING

APPROVED BY RESOLUTION OF THE PLANNING BOARD OF THE CITY OF BEACON, NEW YORK, ON THE  
DAY OF \_\_\_\_\_, 20\_\_\_\_, SUBJECT TO ALL REQUIREMENTS AND  
CONDITIONS OF SAID RESOLUTION. ANY CHANGE, ERASURE, MODIFICATION OR REVISION OF THIS PLAT,  
AS APPROVED, SHALL VOID THIS APPROVAL.

SIGNED THIS \_\_\_\_\_ DAY OF \_\_\_\_\_, 20\_\_\_\_, BY \_\_\_\_\_

CHAIRMAN

SECRETARY

IN ABSENCE OF THE CHAIRMAN OR SECRETARY, THE ACTING CHAIRMAN OR ACTING SECRETARY  
RESPECTIVELY MAY SIGN IN THIS PLACE.

REVISIONS:			
NO.	DATE	DESCRIPTION	BY
1	02/23/10	REVISED PER PLANNING BOARD COMMENTS	AJS
2	03/30/10	REVISED PER PLANNING BOARD COMMENTS	AJS
3	05/25/10	REVISED PER PLANNING BOARD COMMENTS	AJS
4	11/30/10	REVISED PER OWNER CHANGES	AJS
5	12/24/12	REVISED PER OWNER CHANGES	AJS
6	1/29/13	REVISED PER PLANNING BOARD COMMENTS	AJS
7	2/27/18	AMENDMENT TO SITE PLAN	AJS

Amendment to Special Use Permit  
Round House Hotel Building

Sheet 7 of 19

Round House at Beacon Falls

Beacon, New York  
Scale: As Noted  
January 26, 2010

Owner:  
10 Leonard Street, LLC  
179 Main Street  
Beacon, New York 12508

Architect:  
Aryeh Siegel, Architect  
514 Main Street  
Beacon, New York 12508

Site / Civil Engineer:  
Hudson Land Design  
176 Main Street  
Beacon, New York 12508

Landscape Design:  
Naomi Sachs Design  
55 South Street  
Beacon, New York 12508

Surveyor:  
Badey & Watson  
3063 Route 9  
Cold Spring, New York 10516