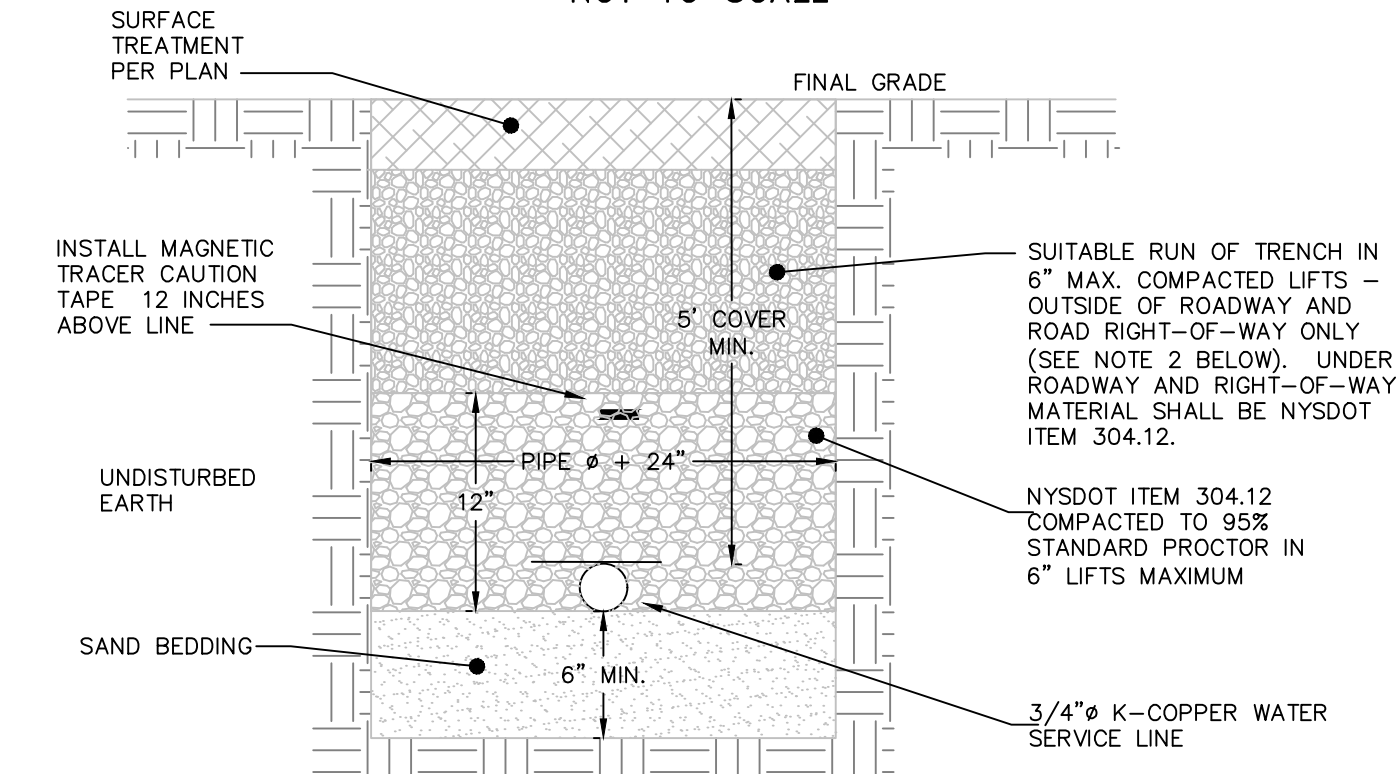


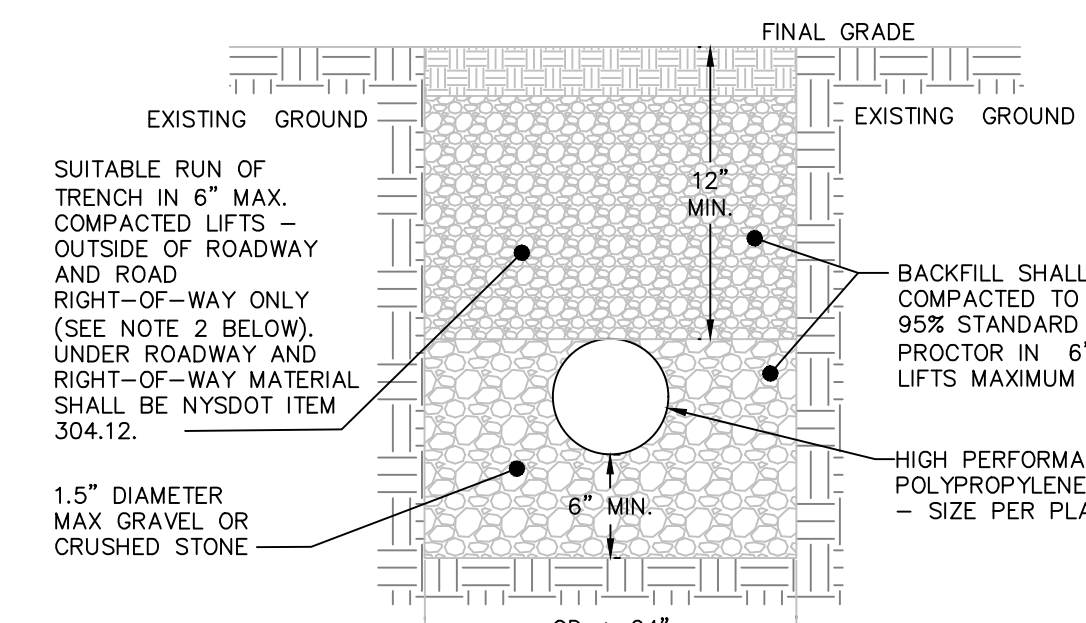
NOTES:
 1. A MINIMUM 5' COVER SHALL BE PROVIDED ON THE WATER SERVICE LINE (CONDITIONED ON ACTUAL WATER MAIN DEPTH).
 2. CORPORATION STOP TO BE COMPRESSION TYPE BY MUELLER.
 3. WATER SERVICE LINE TO HAVE A 'GOOSENECK' NEAR CORPORATION STOP.
 4. CORPORATION STOP TO BE INSTALLED IN THE UPPER HALF OF THE WATER MAIN AT AN ANGLE OF APPROXIMATELY 45° FROM HORIZONTAL.
 5. THE CONTRACTOR SHALL INSTALL A FULL BODIED STAINLESS STEEL TAPPING SLEEVE AT THE PROPOSED WATER SERVICE LOCATION.

WATER SERVICE CONNECTION DETAIL
NOT TO SCALE



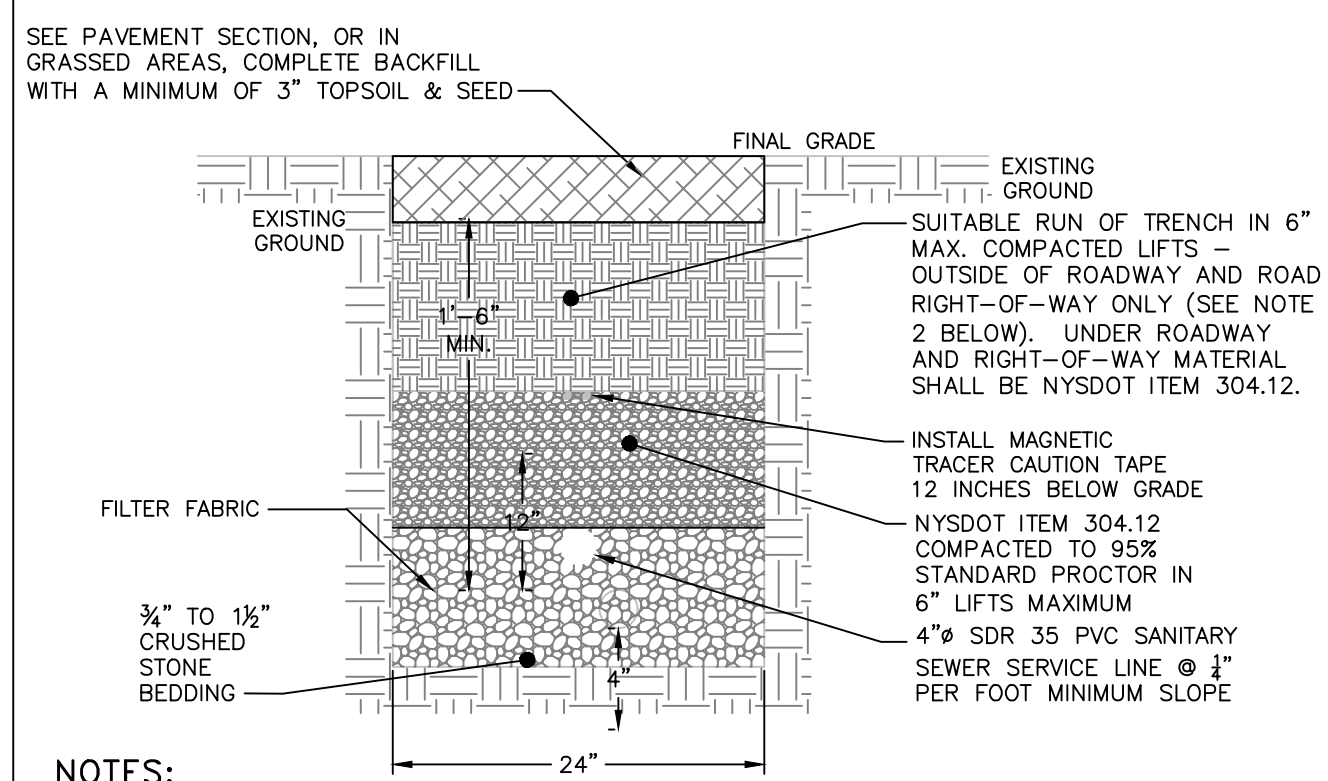
NOTES:
 1. EXCAVATION AND TRENCHING SHALL MEET ALL OSHA REQUIREMENTS.
 2. SUITABLE RUN OF TRENCH SHALL NOT INCLUDE FROZEN MATERIALS, DEBRIS, ORGANIC MATERIALS, ENLOGATED PARTICLES, LARGE STONES OR OTHER UNSUITABLE MATERIALS. IF THE RUN OF TRENCH MATERIAL IS FOUND TO BE UNSUITABLE, A SUITABLE BACKFILL MATERIAL SHALL BE IMPORTED AND USED.
 3. IN AREAS WHERE 6' COVER REQUIREMENT CANNOT BE MET, THE CONTRACTOR SHALL PROVIDE PIPE INSULATION TO PREVENT FREEZING.
 4. IF WATER SERVICE AND SEWER SERVICE LINE CROSSINGS ARE NEEDED, PROVIDE 18" OF VERTICAL SEPARATION.

WATER SERVICE LINE TRENCH DETAIL
NOT TO SCALE



NOTES:
 1. EXCAVATION AND TRENCHING SHALL MEET ALL OSHA REQUIREMENTS.

STORM LINE TRENCH DETAIL
NOT TO SCALE



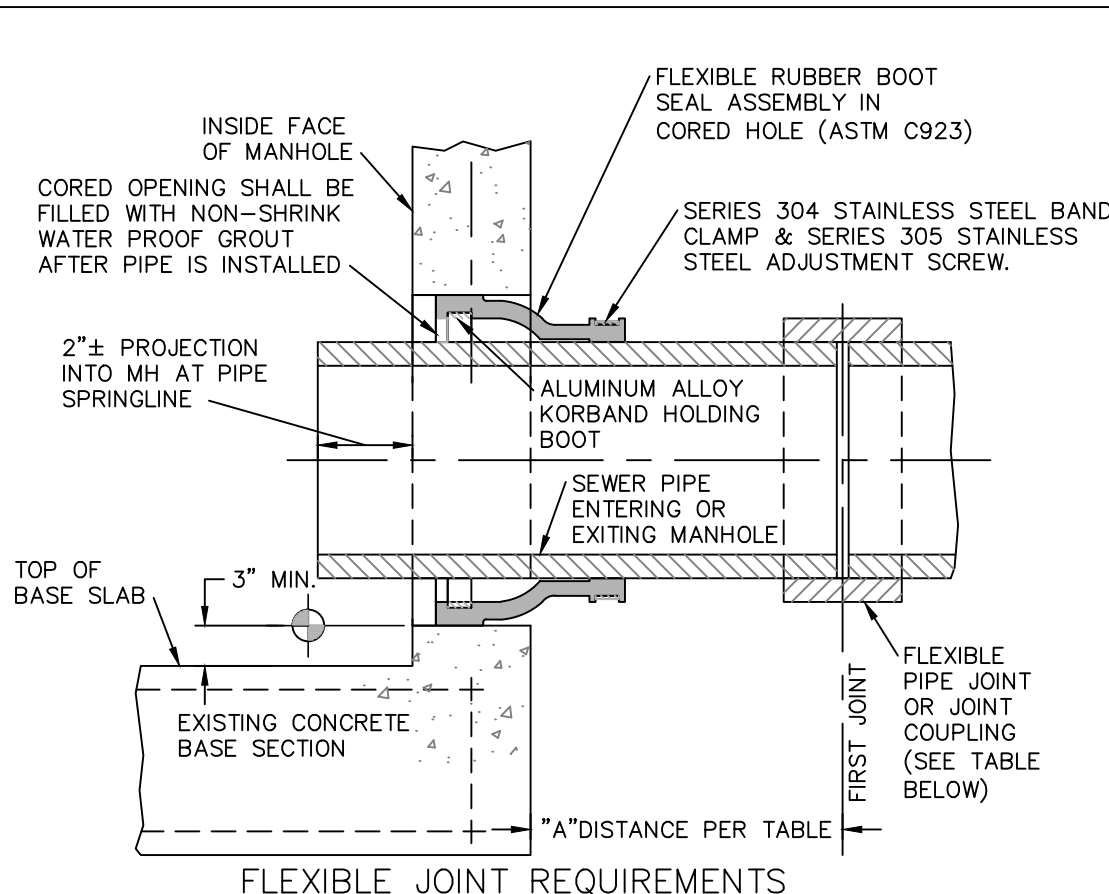
NOTES:
 1. EXCAVATION AND TRENCHING SHALL MEET ALL OSHA REQUIREMENTS.
 2. SUITABLE RUN OF TRENCH SHALL NOT INCLUDE FROZEN MATERIALS, DEBRIS, ORGANIC MATERIALS, LARGE STONES OR OTHER UNSUITABLE MATERIALS. IF THE RUN OF TRENCH MATERIAL IS FOUND TO BE UNSUITABLE, A SUITABLE BACKFILL MATERIAL SHALL BE IMPORTED AND USED.

SANITARY SEWER SERVICE LINE TRENCH DETAIL
NOT TO SCALE

OWNER'S CONSENT:

THE UNDERSIGNED OWNER OF THE PROPERTY HEREON STATES THAT HE IS FAMILIAR WITH THIS MAP, ITS CONTENTS AND ITS LEGENDS AND HEREBY CONSENTS TO ALL SAID TERMS AND CONDITIONS AS STATED HEREON.

GARY JOSEPH OR TIM OWEN _____ DATE _____

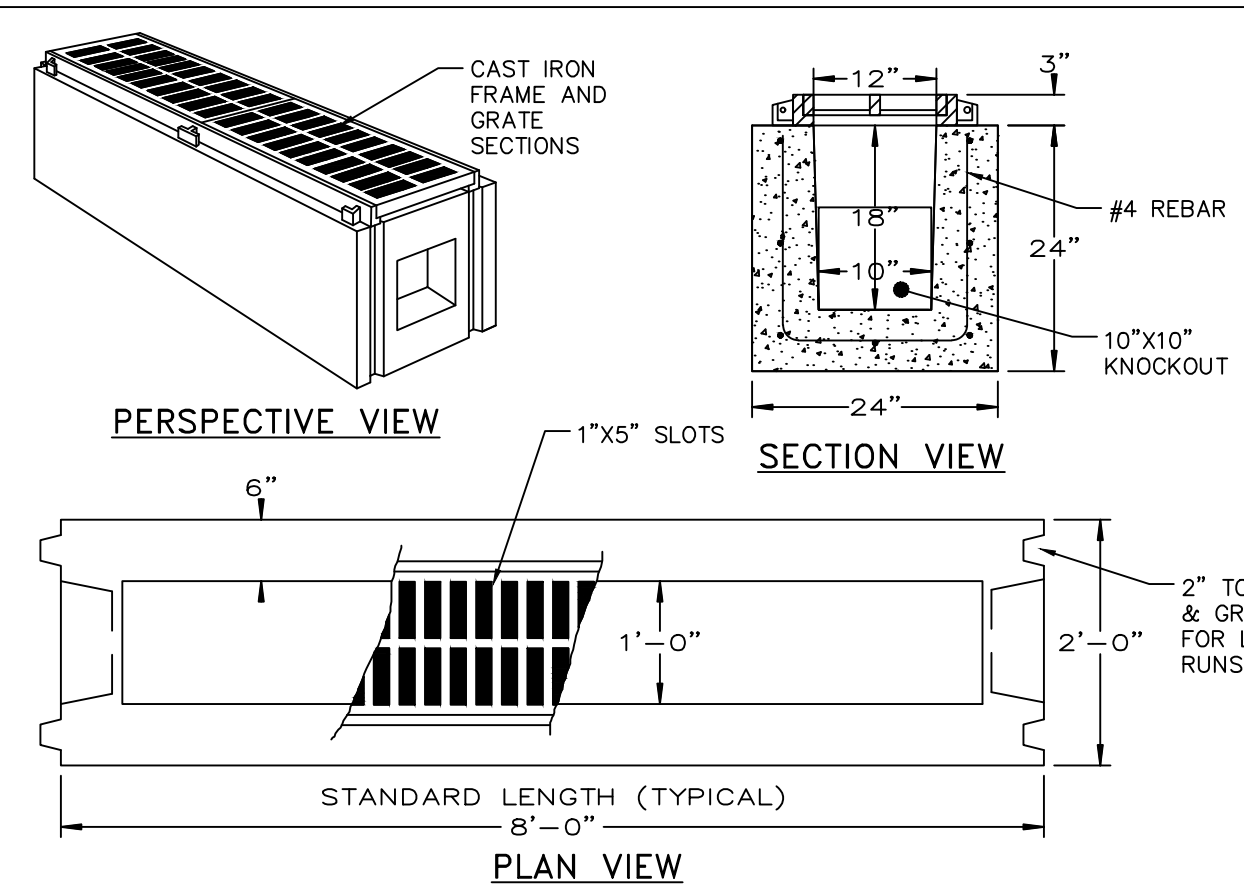


FLEXIBLE JOINT REQUIREMENTS

SEWER PIPE TYPE	FLEXIBLE JOINT TYPE IN & OUT	"A" DISTANCE (FEET)
DUCTILE IRON	STD RUBBER GASKET PIPE JOINT ONLY	10' MAX
PVC	STD RUBBER GASKET PIPE JOINT ONLY	3' MAX

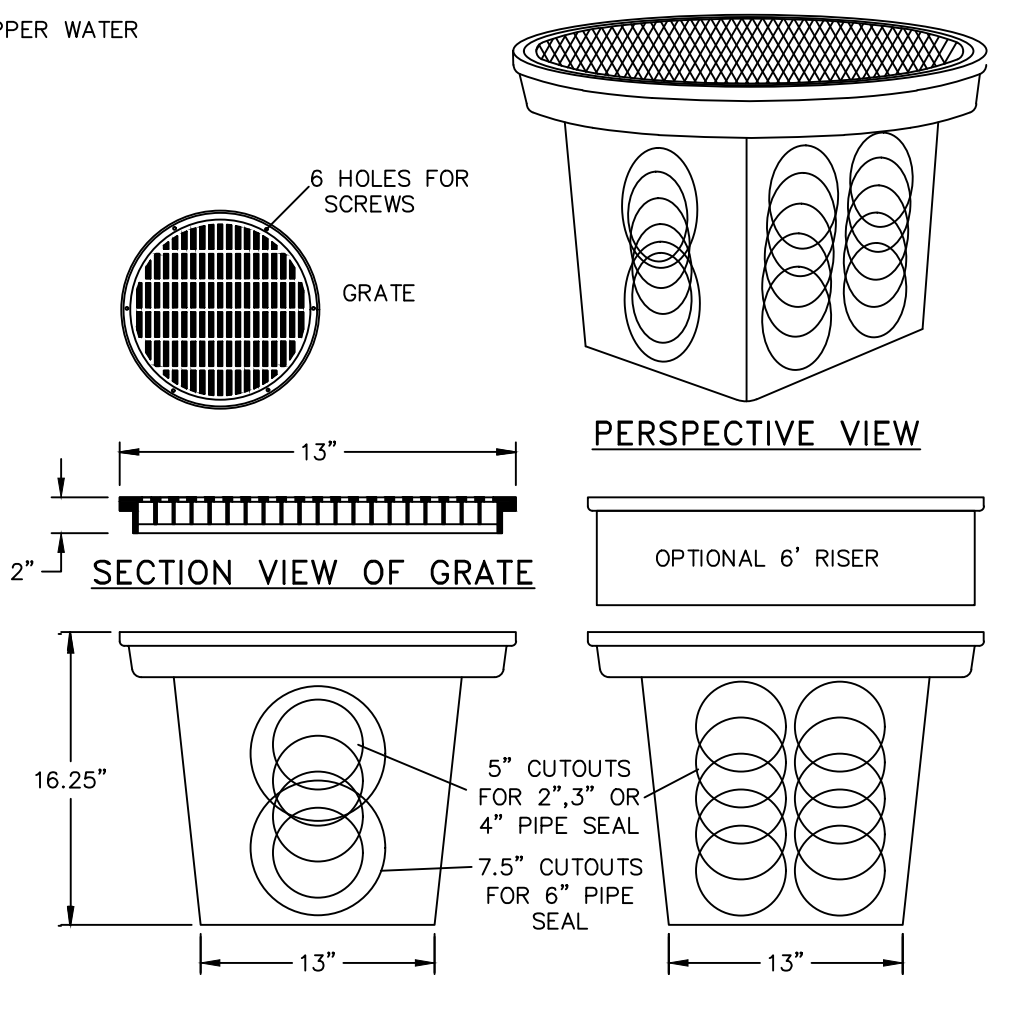
NOTE:
 REFERENCE MANHOLE DETAIL(S) FOR REQUIRED INVERT CHANNEL CONFIGURATION.

CORED HOLE AND INSERTED BOOT DETAIL
NOT TO SCALE



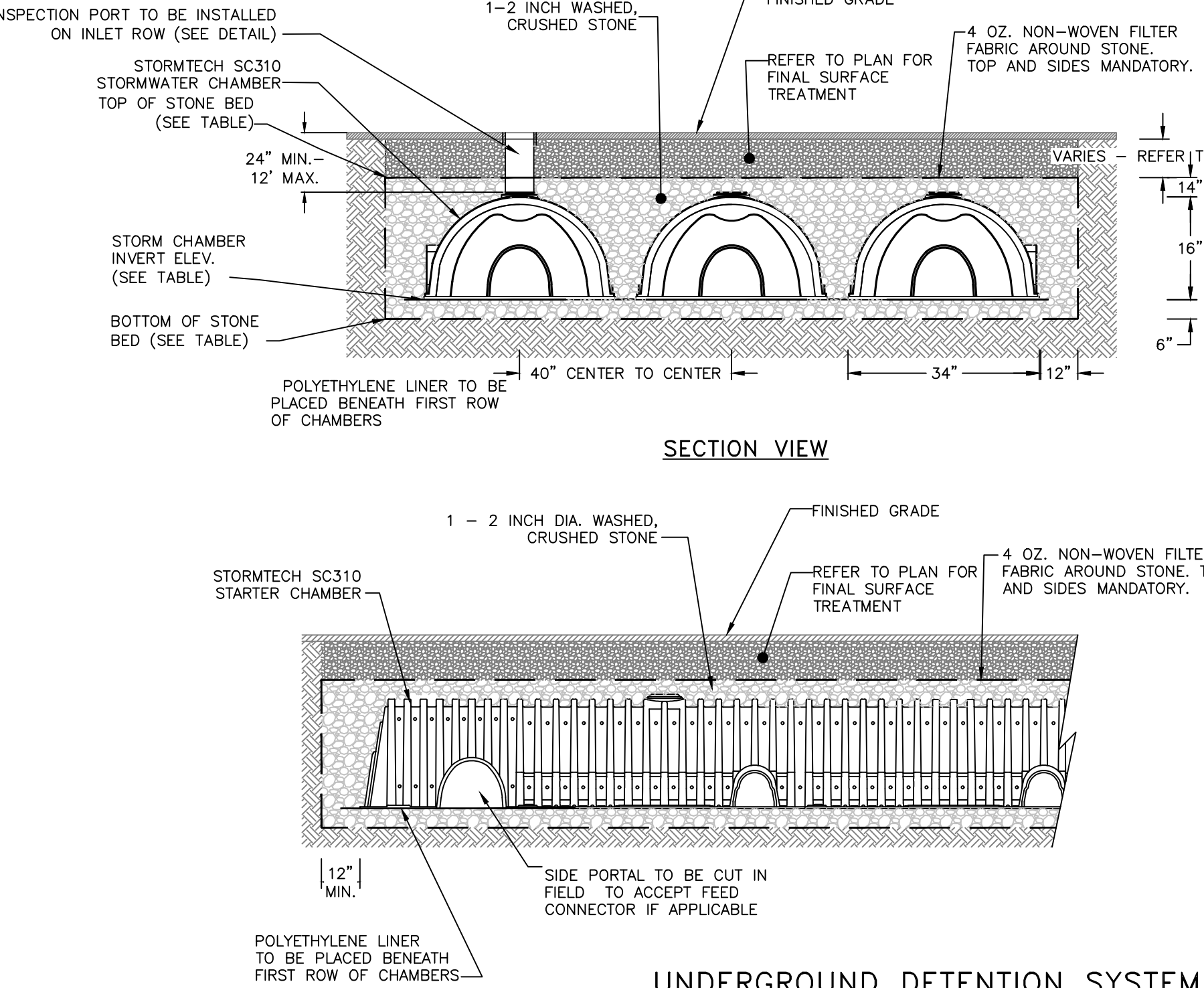
NOTES:
 1. MATERIALS AND METHODS OF CONSTRUCTION SHALL BE IN CONFORMANCE WITH THE NEW YORK STATE DEPARTMENT OF TRANSPORTATION (NYS DOT) STANDARD SPECIFICATIONS FOR CONSTRUCTION AND MATERIALS, LATEST EDITION, AND ALL ADDENDA THERETO.
 2. REFER ALSO TO NYS DOT STANDARD SHEET 604-01.
 3. MINIMUM LOAD RATING TO BE H-20.

TRENCH DRAIN DETAIL
NOT TO SCALE

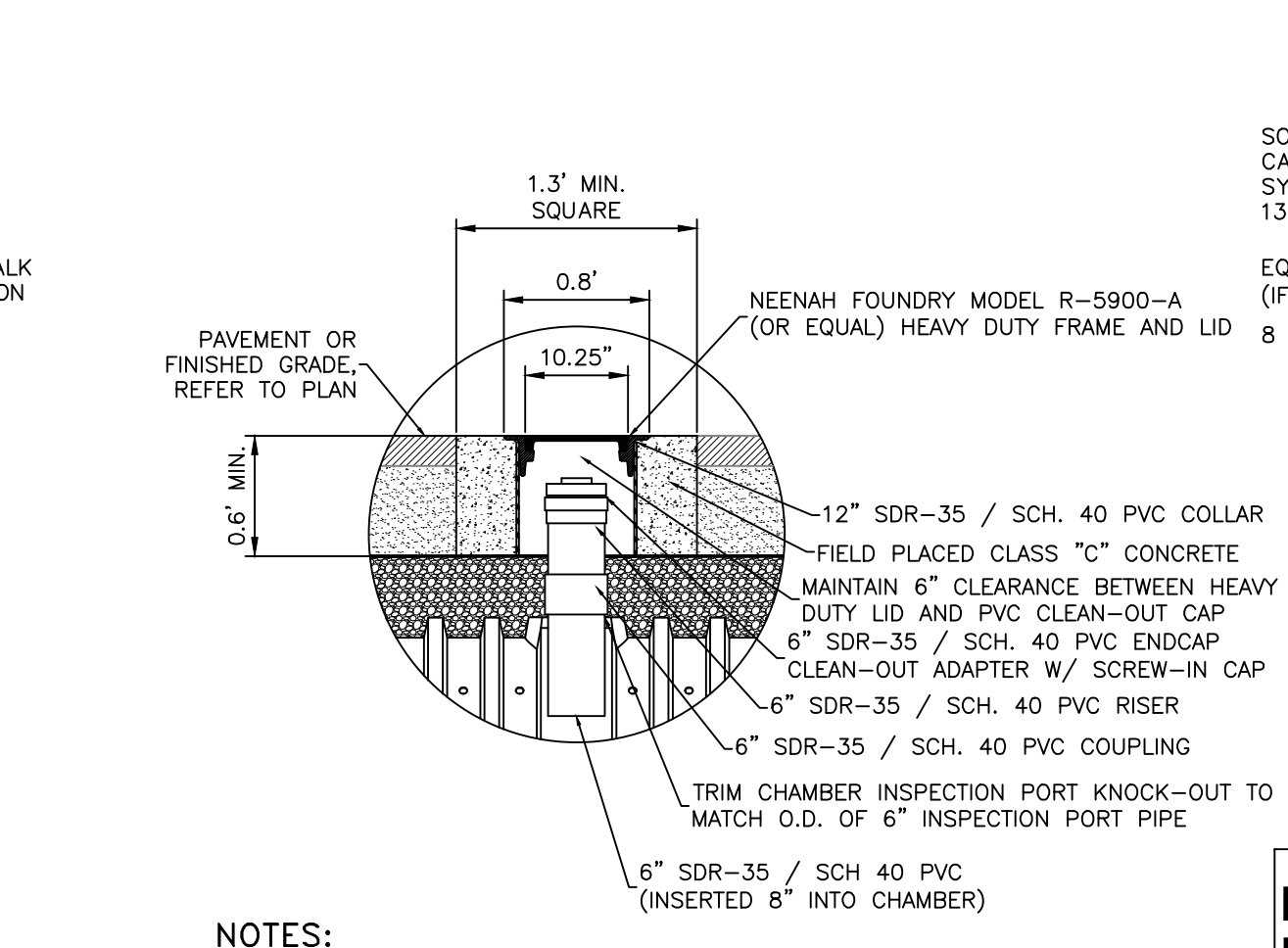


NOTES:
 1. YARD DRAIN TO BE MODEL DB-POLY20DIA FROM WOODARDS CONCRETE PRODUCTS, 629 LYBOLT ROAD BULLVILLE, NY 10915.

POLYETHYLENE YARD DRAIN DETAIL
NOT TO SCALE

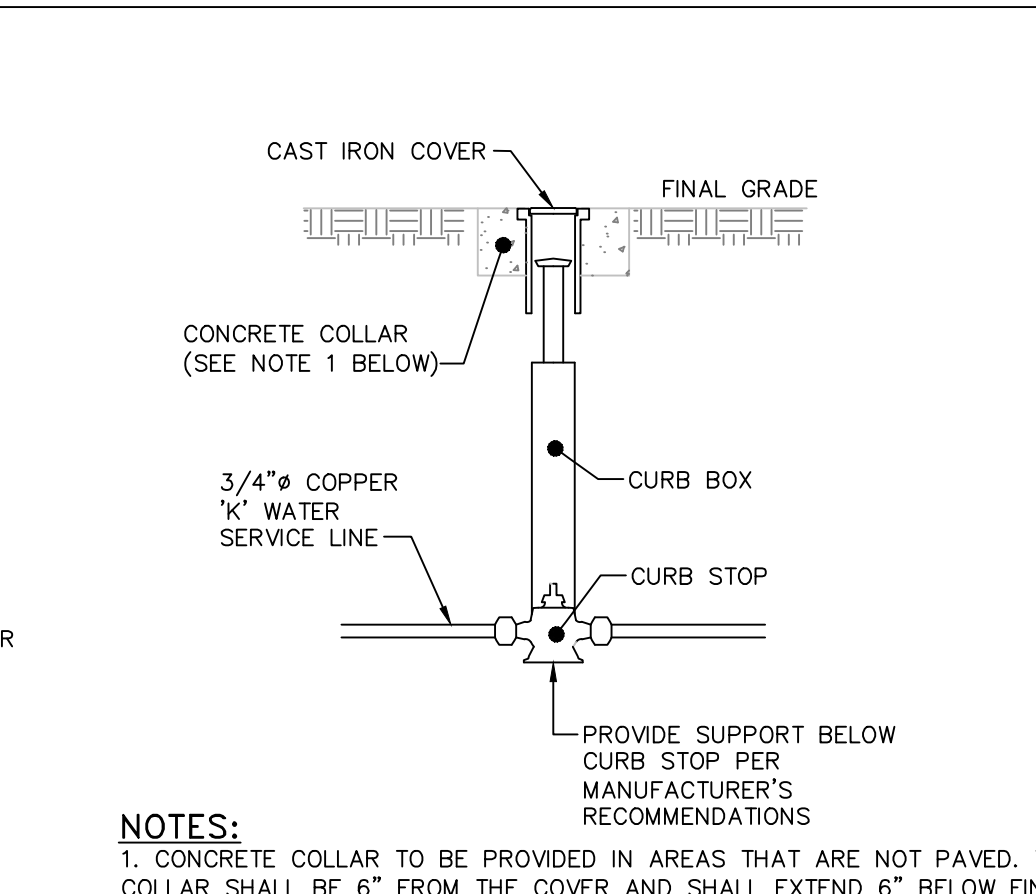


UNDERGROUND DETENTION SYSTEM DETAIL
NOT TO SCALE



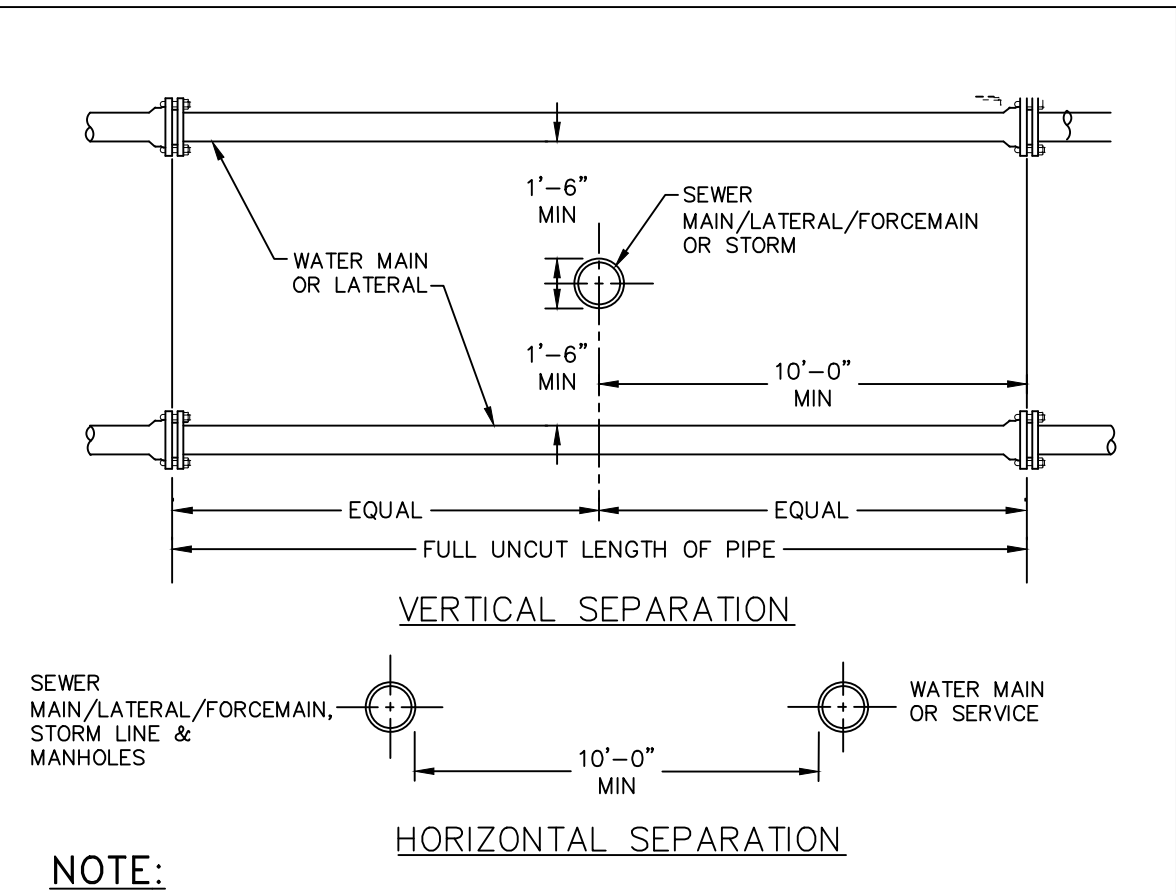
NOTES:
 1. PROVIDE AN INSPECTION PORT FOR THE INITIAL AND FINAL CHAMBER OF EACH ROW, AND FOR ROWS WITH MORE THAN 10 CHAMBERS, ONE IN AN INTERMEDIATE CHAMBER.

UNDERGROUND DETENTION SYSTEM INSPECTION PORT DETAIL
NOT TO SCALE



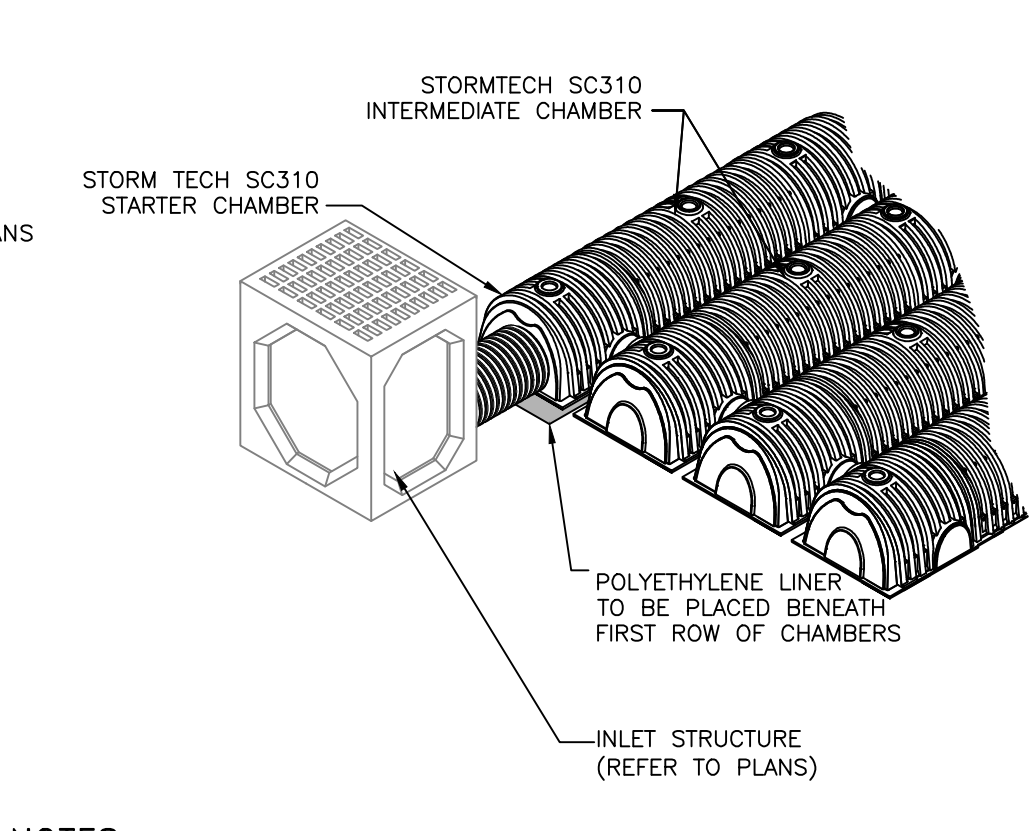
NOTES:
 1. CONCRETE COLLAR TO BE PROVIDED IN AREAS THAT ARE NOT PAVED. THE COLLAR SHALL BE 6" FROM THE COVER AND SHALL EXTEND 6" BELOW FINAL GRADE.
 2. CURB STOP TO BE COMPRESSION TYPE BY MUELLER.
 3. AREA AROUND CURB BOX TO BE BACKFILLED WITH GRAVELLY MATERIAL.

WATER SHUT-OFF VALVE DETAIL
NOT TO SCALE



NOTE:
 NO DEVIATION IN THE SEPARATION REQUIREMENTS WILL BE PERMITTED WITHOUT THE EXPRESS APPROVAL OF THE DUTCHESS COUNTY DEPARTMENT OF HEALTH AND THE CITY OF BEACON. CONCRETE ENCASEMENT OF WATERLINE OR OFFSETTING OF WATERLINE SHALL BE REQUIRED WHERE SEPARATION DISTANCES CANNOT BE MAINTAINED.

WATER LINE SEPARATION DETAIL
NOT TO SCALE



NOTES:
 1. CONCRETE COLLAR TO BE PROVIDED IN AREAS THAT ARE NOT PAVED. THE COLLAR SHALL BE 6" FROM THE COVER AND SHALL EXTEND 6" BELOW FINAL GRADE.

CLEANOUT DETAIL
NOT TO SCALE

SYSTEM ID	BOTTOM OF STONE BED ELEVATION	CHAMBER INVERT	TOP OF STONE BED ELEVATION	STONE BED FOOTPRINT
LOT 2	138.7	139.2	141.7	186 S.F.
LOT 3	137.5	138.0	140.5	295 S.F.

NOTES:
 1. STORMTECH SC310 CHAMBERS BY STORMTECH, INC. OF ROCKY HILL, CT. ALL CHAMBERS SHALL BE INSTALLED IN ACCORDANCE WITH STORMTECH INC.'S CURRENT RECOMMENDED INSTALLATION GUIDELINES.
 2. THE BED OF THE SYSTEM FOOTPRINT SHALL BE LAID NEARLY LEVEL.
 3. THE CONTRACTOR SHALL NOTIFY THE DESIGN ENGINEER IF SUBSURFACE CONDITIONS IN THE AREAS OF THE INFILTRATOR TRENCHES IS NOT CONSISTENT WITH THE TEST PIT OR PERCOLATION DATA (E.G. GROUNDWATER OR BEDROCK ENCOUNTERED, SOIL PROPERTIES ARE NOT CONSISTENT, ETC.).

UNDERGROUND DETENTION SYSTEM DETAIL
NOT TO SCALE

APPROVED BY RESOLUTION OF THE PLANNING BOARD OF THE CITY OF BEACON, NEW YORK, ON THE _____ DAY OF _____, 20____, SUBJECT TO ALL REQUIREMENTS AND CONDITIONS OF SAID RESOLUTION. ANY CHANGE, ERASURE, MODIFICATION OR REVISION OF THIS PLAN, AS APPROVED, SHALL VOID THIS APPROVAL.

SIGNED THIS _____ DAY OF _____, 20____ BY _____ CHAIRMAN

_____ SECRETARY

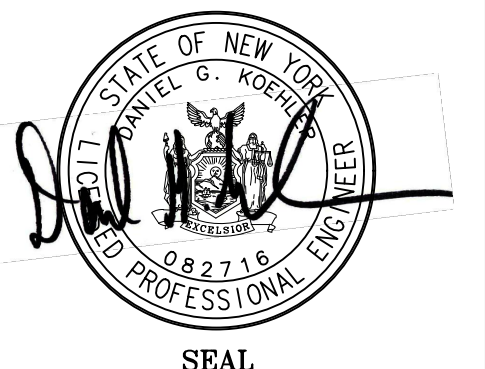
IN ABSENCE OF THE CHAIRMAN OR SECRETARY, THE ACTING CHAIRMAN OR ACTING SECRETARY RESPECTIVELY MAY SIGN IN THIS PLACE.

DETAILS
38 ST. LUKES SUBDIVISION

38 ST. LUKES PLACE
 CITY OF BEACON
 DUTCHESS COUNTY, NEW YORK
 TAX ID: 6054-38-156634
 SCALE: NTS
 APRIL 24, 2018



HUDSON LAND DESIGN
 PROFESSIONAL ENGINEERING P.C.
 174 MAIN STREET
 BEACON, NEW YORK 12508
 PH: 845-440-6926 F: 845-440-6637



JON D. BODENDORF, P.E.
 NYS LICENSE NO. 076245
 DANIEL G. KOHLER, P.E.
 NYS LICENSE NO. 082716

SHEET: 4 OF 5

NO.	DATE	DESCRIPTION	BY
1	05/29/18	REVISED PER CONSULTANT COMMENTS	AG
2	06/26/18	PER CONSULTANTS COMMENTS	AG

Dig Safely
 New York
 800-962-7962
 www.digsafelynewyork.org

- Call Before You Dig
- Wait The Required Time
- Confirm Utility Response
- Respect the Marks
- Dig With Care