

TRELLIS  
PAINTED METAL RAILING

DOUBLE GLAZED  
INSULATED WINDOWS

42" HIGH TEMPERED  
GLASS RAILING IN  
FRONT OF DOUBLE  
FRENCH DOORS

METAL CANOPY AT  
ENTRANCE

TRELLIS WITH PLANTING

CONCRETE FOUNDATION  
WALLS



**Building Elevation: Building #3, 6**

1/16" = 1'-0"

TRELLIS  
PAINTED METAL RAILING

DOUBLE GLAZED  
INSULATED WINDOWS

42" HIGH TEMPERED  
GLASS RAILING IN  
FRONT OF DOUBLE  
FRENCH DOORS

METAL CANOPY AT  
ENTRANCE

CONCRETE FOUNDATION  
WALLS



**Building Elevation: Building #3, 6**

1/16" = 1'-0"

STANDING SEAM  
GALVANIZED METAL  
ROOF

DOUBLE GLAZED  
INSULATED WINDOWS

42" HIGH TEMPERED  
GLASS RAILING IN  
FRONT OF DOUBLE  
FRENCH DOORS

FRENCH DOORS AT  
COMMON SPACE

CONCRETE FOUNDATION  
WALLS



**Building Elevation: Building #4**

1/16" = 1'-0"



**Building Elevation: Building #4**

1/16" = 1'-0"

STANDING SEAM  
GALVANIZED METAL  
ROOF

DOUBLE GLAZED  
INSULATED WINDOWS

42" HIGH TEMPERED  
GLASS RAILING IN  
FRONT OF DOUBLE  
FRENCH DOORS

CONCRETE FOUNDATION  
WALLS



**Building Elevation: Typical Gable Roof Building # 1, 2, 5, 7**

1/16" = 1'-0"

STANDING SEAM  
GALVANIZED METAL  
ROOF

DOUBLE GLAZED  
INSULATED WINDOWS

42" HIGH TEMPERED  
GLASS RAILING IN  
FRONT OF DOUBLE  
FRENCH DOORS

CONCRETE FOUNDATION  
WALLS



**Building Elevation: Typical Gable Roof Building # 1, 2, 5, 7**

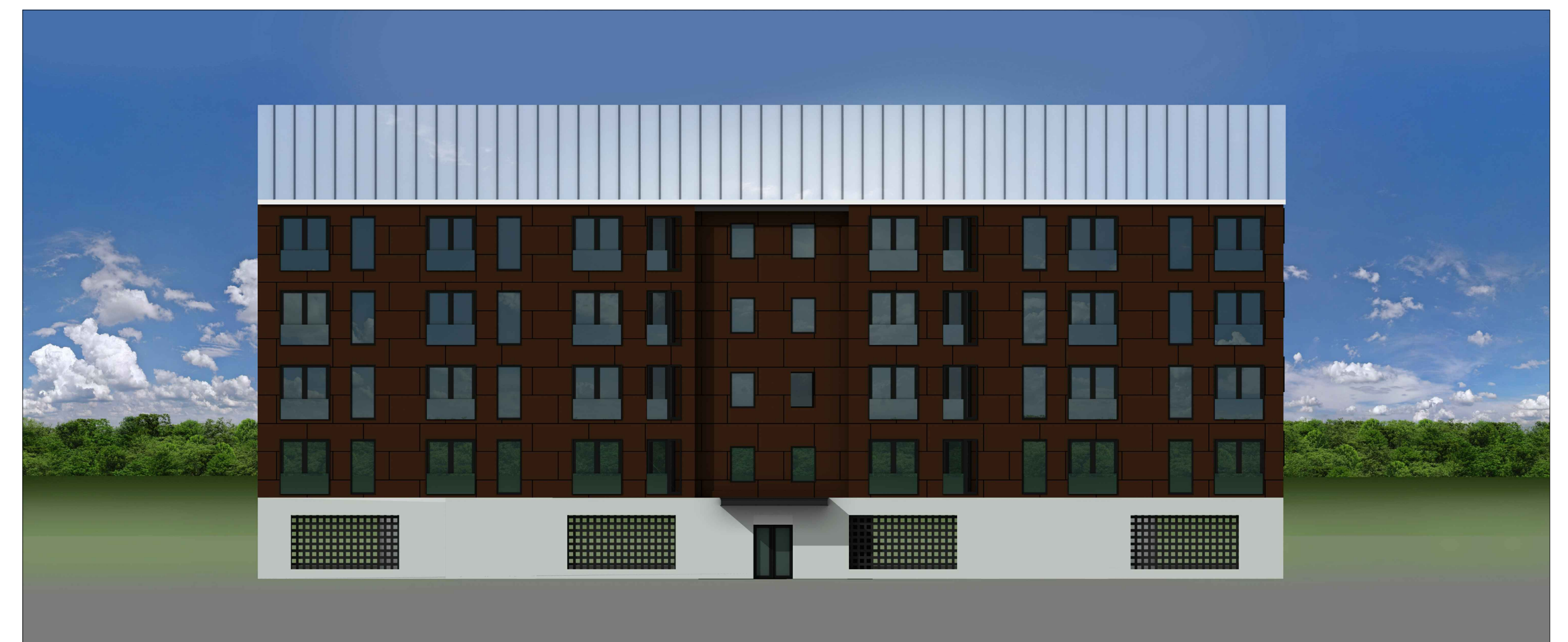
1/16" = 1'-0"

STANDING SEAM  
GALVANIZED METAL  
ROOF

DOUBLE GLAZED  
INSULATED WINDOWS

42" HIGH TEMPERED  
GLASS RAILING IN  
FRONT OF DOUBLE  
FRENCH DOORS

CONCRETE FOUNDATION  
WALLS



**Building Elevation: Typical Gable Roof Building Over Podium # 1, 2, 5, 7**

STANDING SEAM  
GALVANIZED METAL  
ROOF

DOUBLE GLAZED  
INSULATED WINDOWS

42" HIGH TEMPERED  
GLASS RAILING IN  
FRONT OF DOUBLE  
FRENCH DOORS

CONCRETE FOUNDATION  
WALLS



**Building Elevation: Typical Gable Roof Building Over Podium #1, 2, 5, 7**

1/16" = 1'-0"

NOTE: THESE BUILDING ELEVATIONS ARE COMPOSITE DRAWINGS INTENDED TO SHOW THE DESIGN OF THE BUILDINGS IN VARIOUS CONFIGURATIONS. THESE ELEVATIONS ARE INTENDED TO AID THE ARCHITECTURAL REVIEW BOARD IN EVALUATING THE DESIGN.

APPROVED BY RESOLUTION OF THE PLANNING BOARD OF THE CITY OF BEACON, NEW YORK, ON THE \_\_\_\_\_ DAY OF \_\_\_\_\_, 20\_\_\_\_ SUBJECT TO ALL REQUIREMENTS AND CONDITIONS OF SAID RESOLUTION. ANY CHANGE, ERASURE, MODIFICATION OR REVISION OF THIS PLAN, AS APPROVED, SHALL VOID THIS APPROVAL.

SIGNED THIS \_\_\_\_\_ DAY OF \_\_\_\_\_, 20\_\_\_\_ BY \_\_\_\_\_

\_\_\_\_\_  
CHAIRMAN

\_\_\_\_\_  
SECRETARY

IN ABSENCE OF THE CHAIRMAN OR SECRETARY, THE ACTING CHAIRMAN OR ACTING SECRETARY RESPECTIVELY MAY SIGN IN THIS PLACE.

NO.	DATE	DESCRIPTION	BY
1	02/28/17	REVISED PER PLANNING BOARD COMMENTS	AJS
2	03/28/17	REVISED PER PLANNING BOARD COMMENTS	AJS
3	04/25/17	REVISED PER PLANNING BOARD COMMENTS	AJS
4	05/30/17	NO CHANGE	AJS
5	07/25/17	NO CHANGE	AJS
6	08/28/17	REVISED PER PLANNING BOARD COMMENTS	AJS
7	09/28/17	REVISED PER PLANNING BOARD COMMENTS	AJS
8	10/31/17	REVISED PER PLANNING BOARD COMMENTS	AJS
9	11/28/17	NO CHANGE	AJS
10	01/30/18	NO CHANGE	AJS
11	05/11/18	NO CHANGE	AJS
12	05/18/18	NO CHANGE	AJS
13	05/28/18	NO CHANGE	AJS