

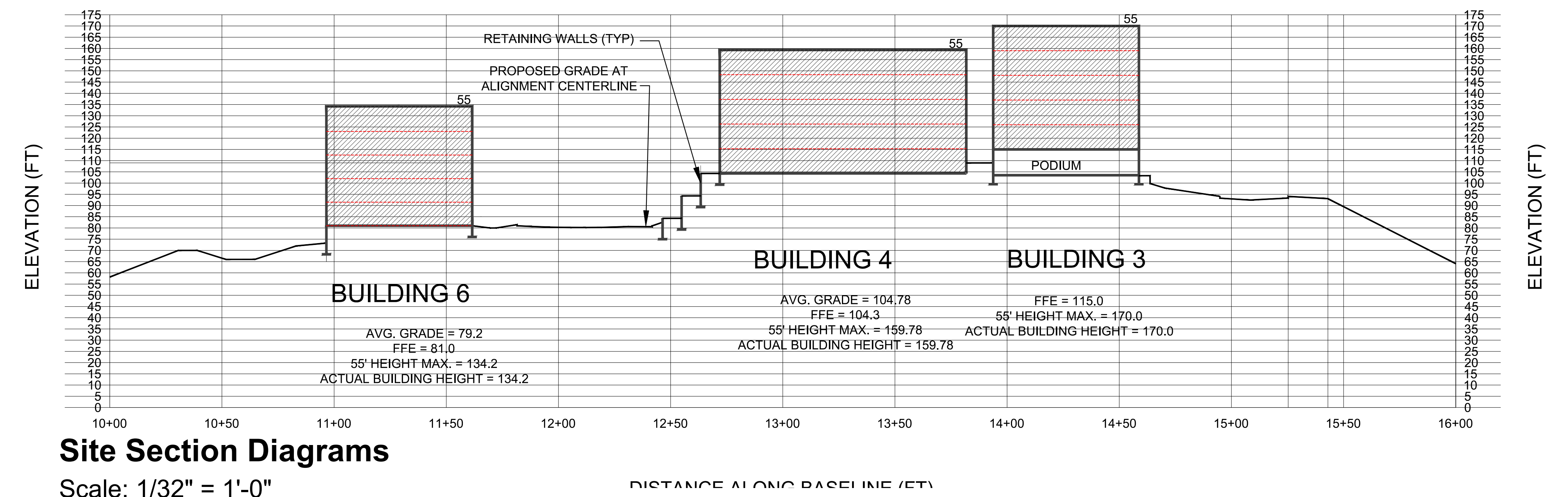
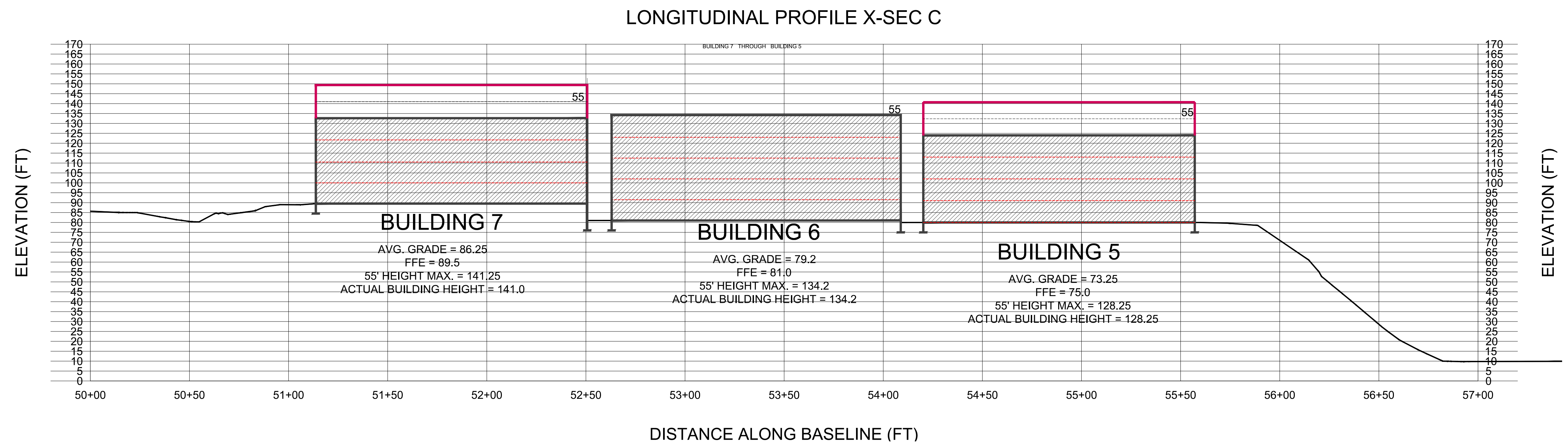
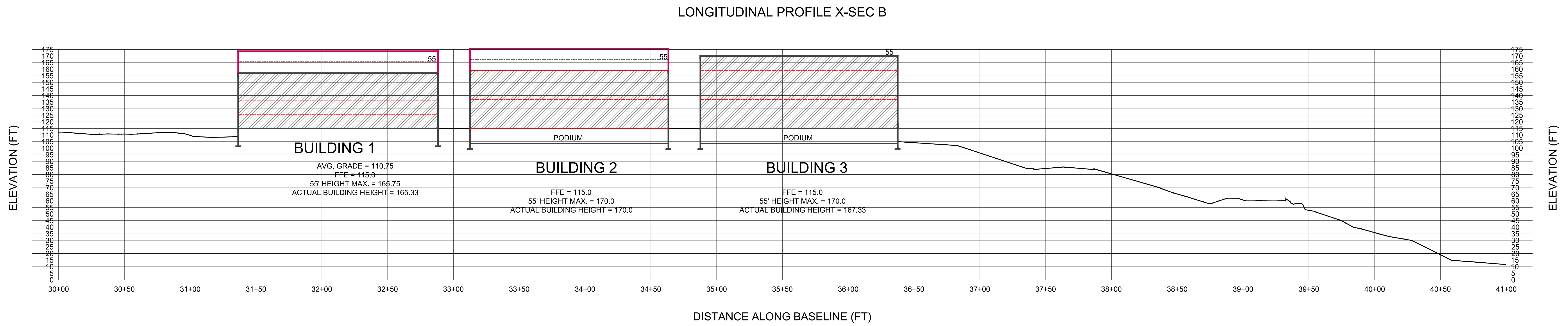
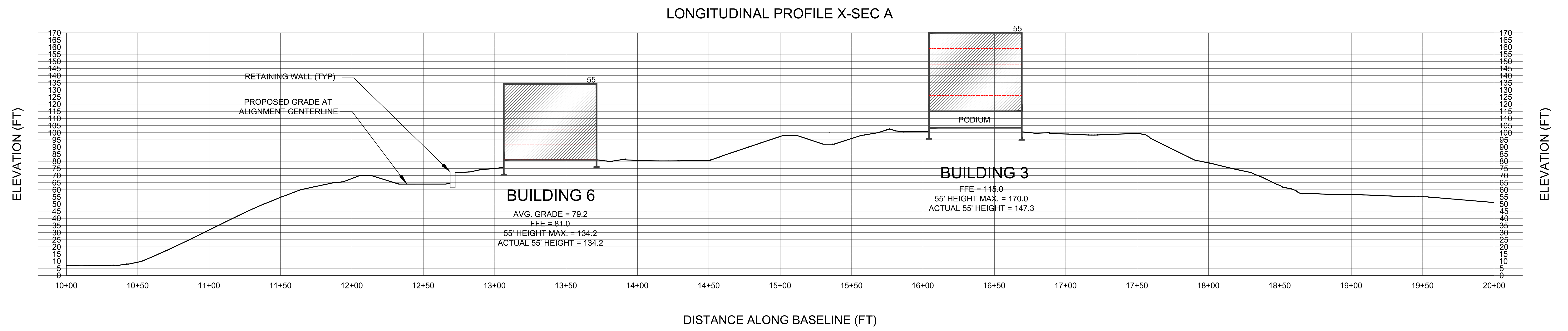
APPROVED BY RESOLUTION OF THE PLANNING BOARD OF THE CITY OF BEACON, NEW YORK, ON THE \_\_\_\_\_ DAY OF \_\_\_\_\_, 20\_\_\_\_ SUBJECT TO ALL REQUIREMENTS AND CONDITIONS OF SAID RESOLUTION. ANY CHANGE, ERASURE, MODIFICATION OR REVISION OF THIS PLAT, AS APPROVED, SHALL VOID THIS APPROVAL.

SIGNED THIS \_\_\_\_\_ DAY OF \_\_\_\_\_, 20\_\_\_\_ BY \_\_\_\_\_ CHAIRMAN

\_\_\_\_\_  
SECRETARY

IN ABSENCE OF THE CHAIRMAN OR SECRETARY, THE ACTING CHAIRMAN OR ACTING SECRETARY RESPECTIVELY MAY SIGN IN THIS PLACE.

NO.	DATE	DESCRIPTION	BY
1	02/28/17	REVISED PER PLANNING BOARD COMMENTS	AJS
2	03/28/17	REVISED PER PLANNING BOARD COMMENTS	AJS
3	04/25/17	REVISED PER PLANNING BOARD COMMENTS	AJS
4	05/30/17	NO CHANGE	AJS
5	07/25/17	NO CHANGE	AJS
6	08/29/17	REVISED PER PLANNING BOARD COMMENTS	AJS
7	09/26/17	REVISED PER PLANNING BOARD COMMENTS	AJS
8	10/31/17	REVISED PER PLANNING BOARD COMMENTS	AJS
9	11/28/17	NO CHANGE	AJS
10	01/30/18	NO CHANGE	AJS
11	06/11/18	NO CHANGE	AJS
12	06/18/18	NO CHANGE	AJS
13	06/26/18	NO CHANGE	AJS



- NOTES:
1. MAXIMUM BUILDING HEIGHT IS 55'-0"
  2. FLAT ROOF BUILDINGS ARE MEASURED TO THE TOP OF THE ROOF SURFACE
  3. GABLE ROOF BUILDINGS ARE MEASURED TO THE MID POINT BETWEEN THE ROOF RIDGE AND THE EAVES
  4. BUILDINGS ARE MEASURED FROM THE AVERAGE GRADE AROUND THE BUILDING, EXCEPT FOR BUILDINGS WITH PODIUM PARKING BELOW (SEE NOTE 4)
  5. BUILDINGS WITH PODIUM PARKING BELOW ARE MEASURED FROM THE TOP OF THE 1ST FLOOR FINISHED FLOOR ELEVATION, AND NOT THE AVERAGE GRADE
  6. BUILDING FLOOR TO FLOOR HEIGHT IS GENERALLY 11'-0", WITH SOME EXCEPTIONS WHERE A SLIGHTLY LOWER FLOOR TO FLOOR HEIGHT IS REQUIRED TO COMPLY WITH THE 55'-0" MAXIMUM BUILDING HEIGHT.

