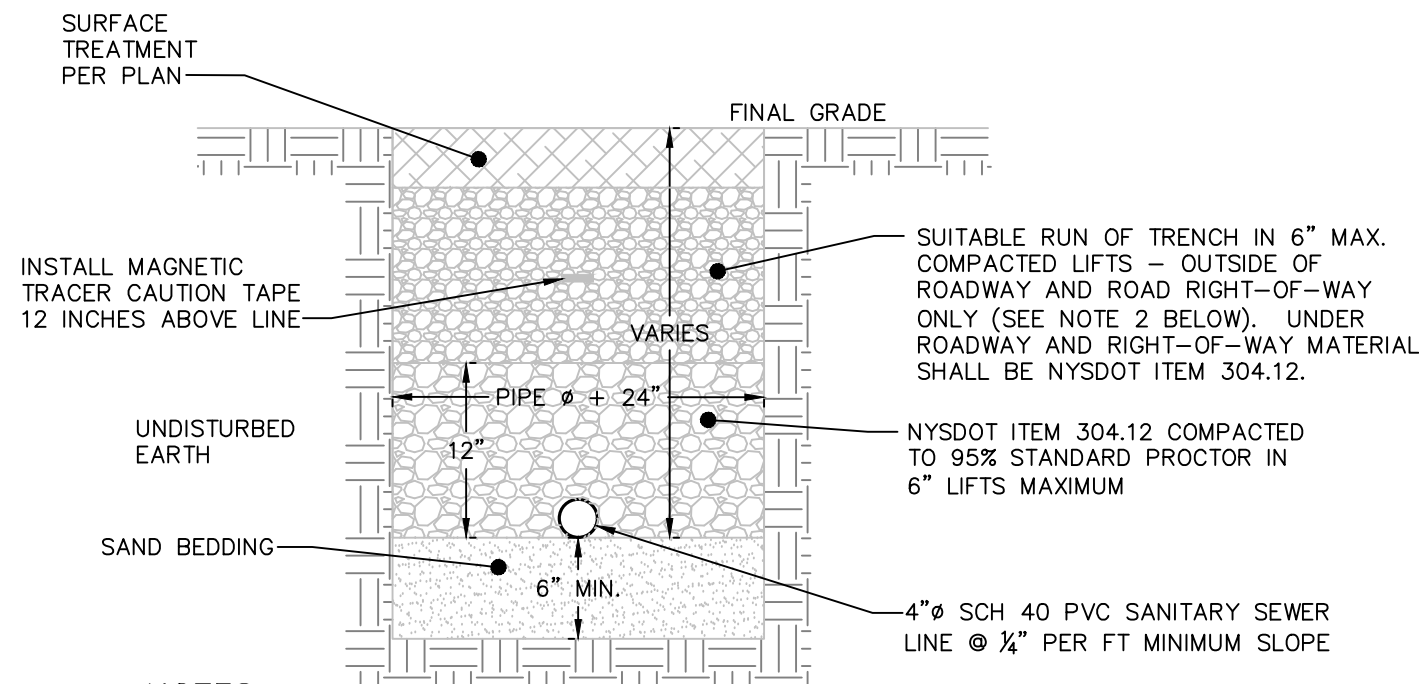
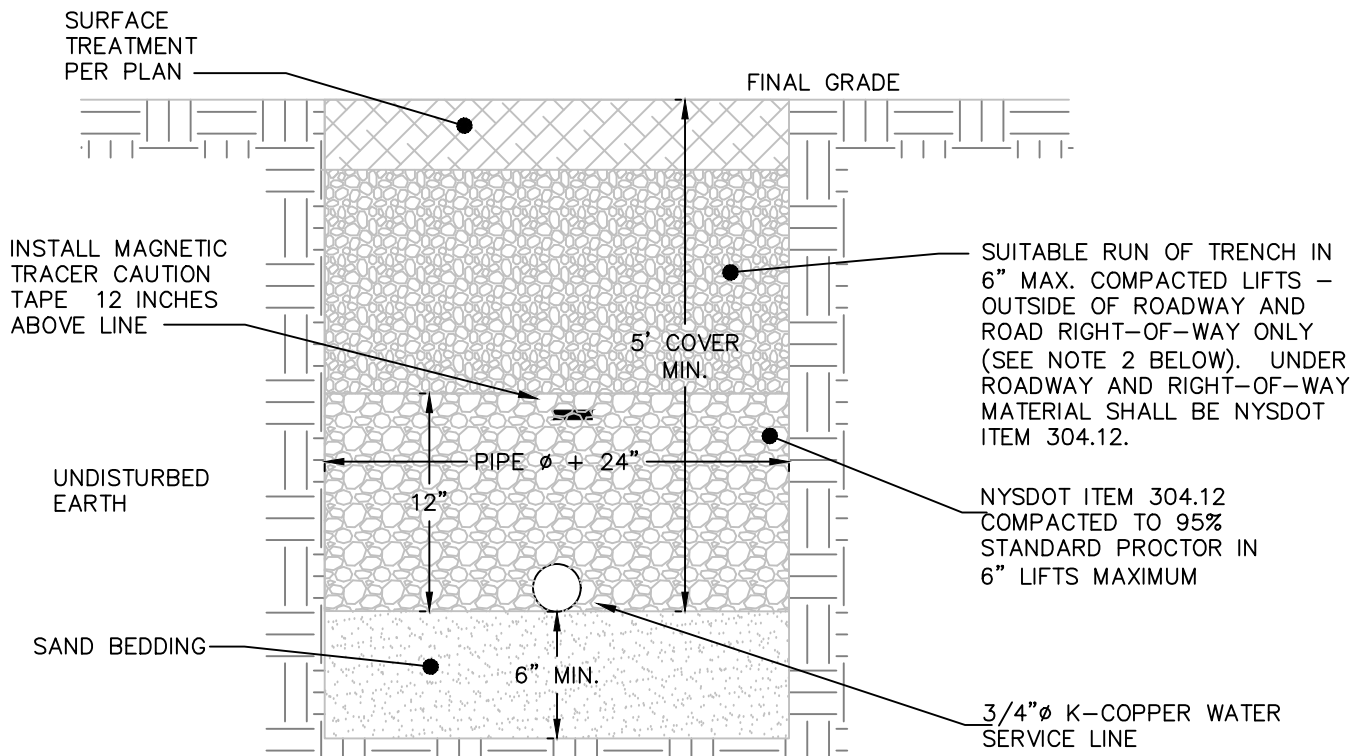


PAVED DRIVEWAY SECTION DETAIL  
NOT TO SCALE



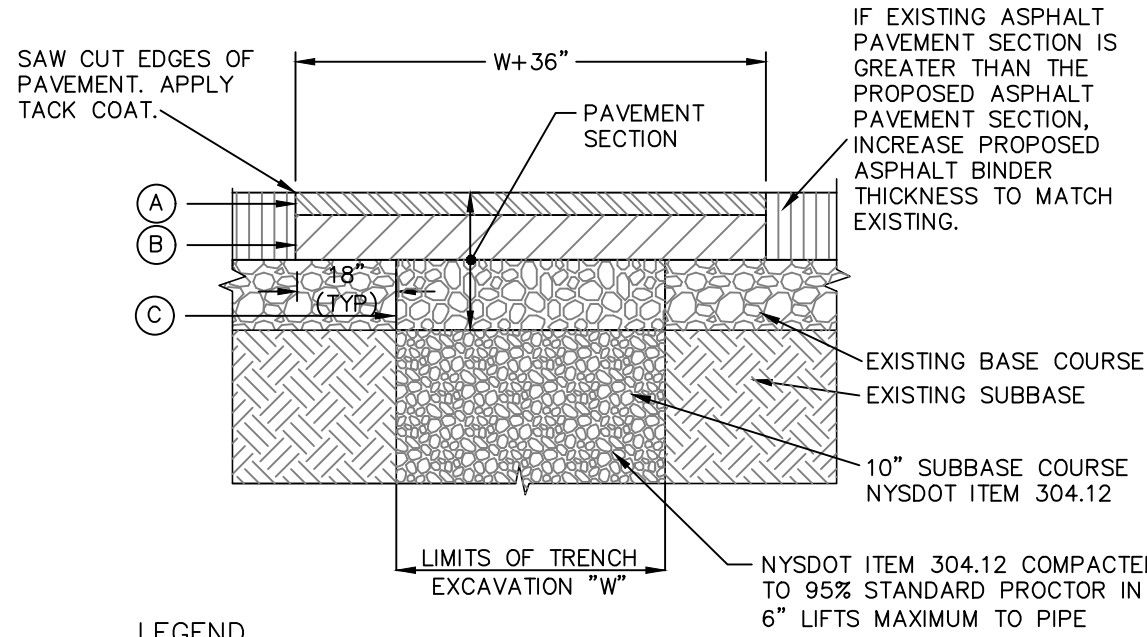
NOTES:  
1. EXCAVATION AND TRENCHING SHALL MEET ALL OSHA REQUIREMENTS.  
2. SUITABLE RUN OF TRENCH SHALL NOT INCLUDE FROZEN MATERIALS, DEBRIS, ORGANIC MATERIALS, LARGE STONES OR OTHER UNSUITABLE MATERIALS. IF THE RUN OF TRENCH MATERIAL IS FOUND TO BE UNSUITABLE, A SUITABLE BACKFILL MATERIAL SHALL BE IMPORTED AND USED.

SANITARY SEWER SERVICE TRENCH DETAIL  
NOT TO SCALE



NOTES:  
1. EXCAVATION AND TRENCHING SHALL MEET ALL OSHA REQUIREMENTS.  
2. SUITABLE RUN OF TRENCH SHALL NOT INCLUDE FROZEN MATERIALS, DEBRIS, ORGANIC MATERIALS, ENLOGATED PARTICLES, LARGE STONES OR OTHER UNSUITABLE MATERIALS. IF THE RUN OF TRENCH MATERIAL IS FOUND TO BE UNSUITABLE, A SUITABLE BACKFILL MATERIAL SHALL BE IMPORTED AND USED.  
3. IN AREAS WHERE 5' COVER REQUIREMENT CANNOT BE MET, THE CONTRACTOR SHALL PROVIDE PIPE INSULATION TO PREVENT FREEZING.  
4. IF WATER SERVICE AND SEWER SERVICE LINE CROSSINGS ARE NEEDED, PROVIDE 18\"/>

WATER SERVICE LINE TRENCH DETAIL  
NOT TO SCALE

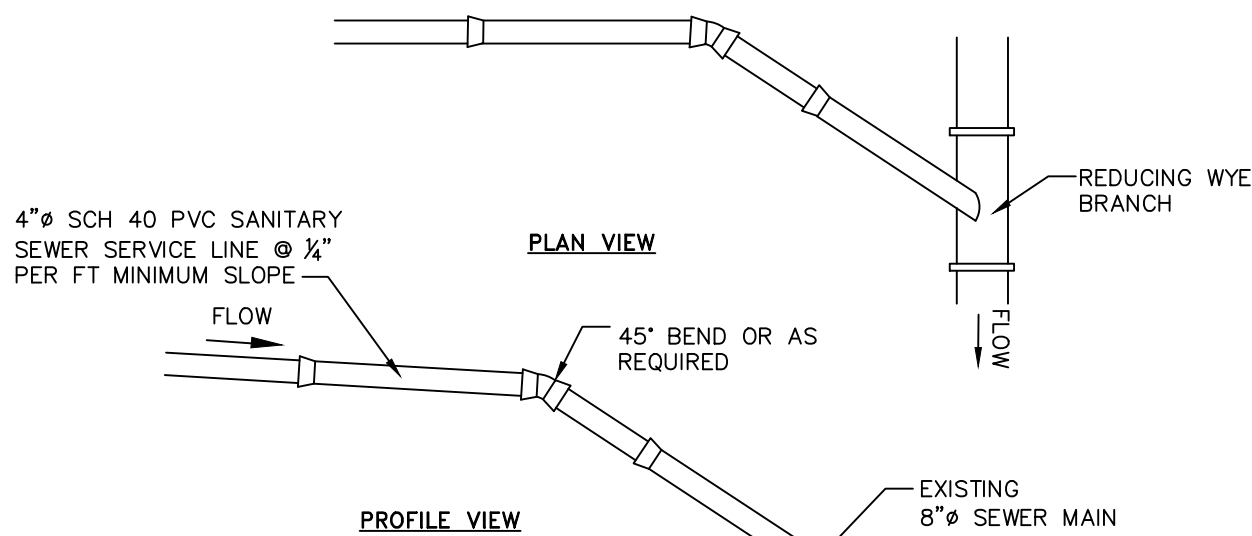


LEGEND  
(A) 1.5\"/>

NOTES:

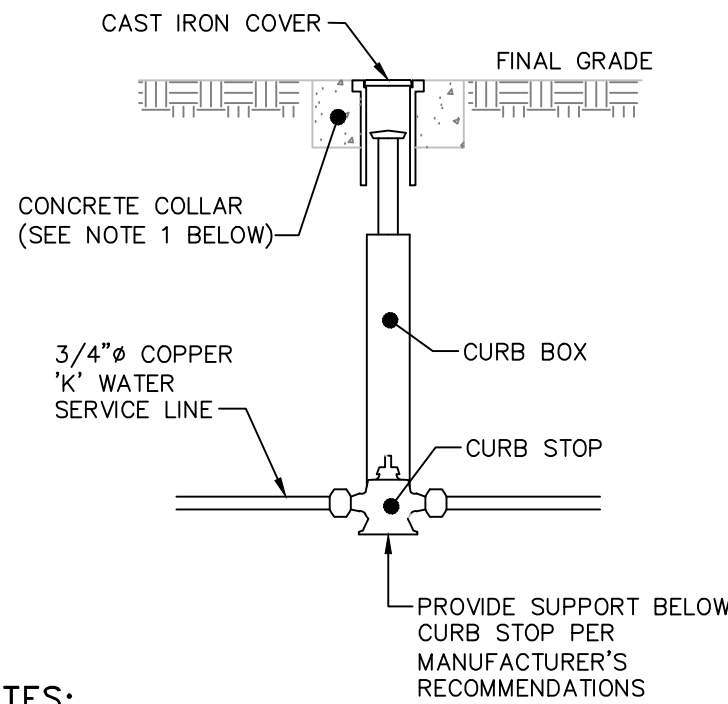
1. SAW CUT MIN. 18\"/>

PAVEMENT RESTORATION DETAIL  
NOT TO SCALE



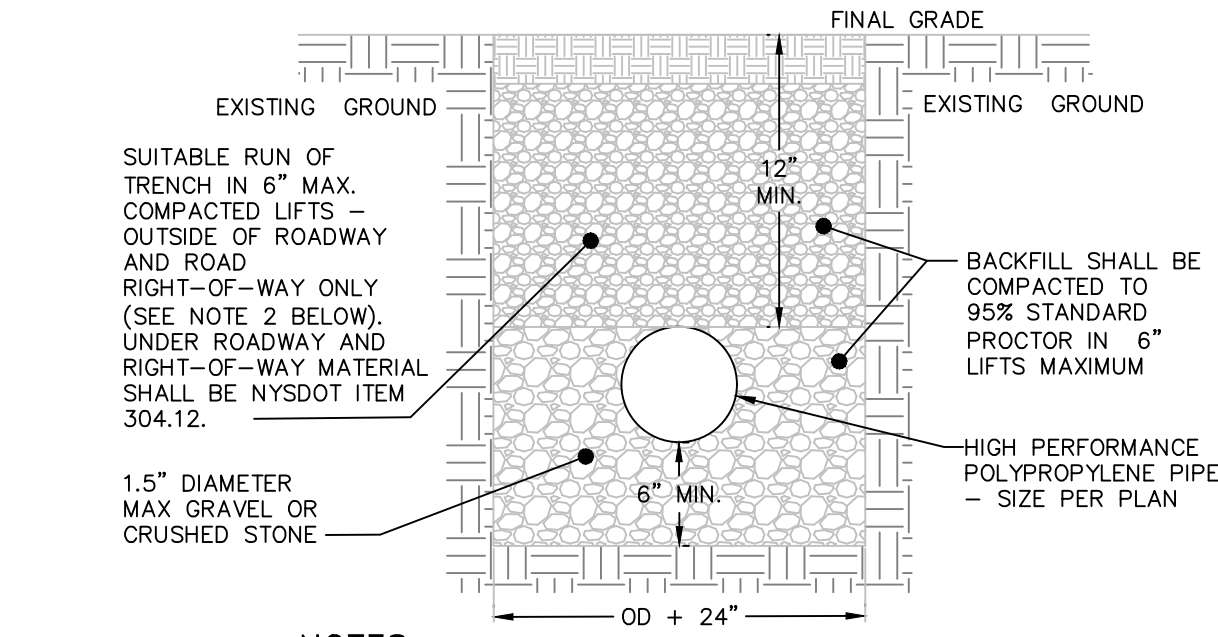
NOTES:  
1. EXCAVATION AND TRENCHING SHALL MEET ALL OSHA REQUIREMENTS.  
2. SUITABLE RUN OF TRENCH SHALL NOT INCLUDE FROZEN MATERIALS, DEBRIS, ORGANIC MATERIALS, LARGE STONES OR OTHER UNSUITABLE MATERIALS. IF THE RUN OF TRENCH MATERIAL IS FOUND TO BE UNSUITABLE, A SUITABLE BACKFILL MATERIAL SHALL BE IMPORTED AND USED.  
3. TAPPING SADDLE FOR CONNECTION OF THE PROPOSED SERVICE LINE TO THE EXISTING SEWER MAIN TO BE A 4\"/>

SANITARY SEWER SERVICE CONNECTION DETAIL  
NOT TO SCALE



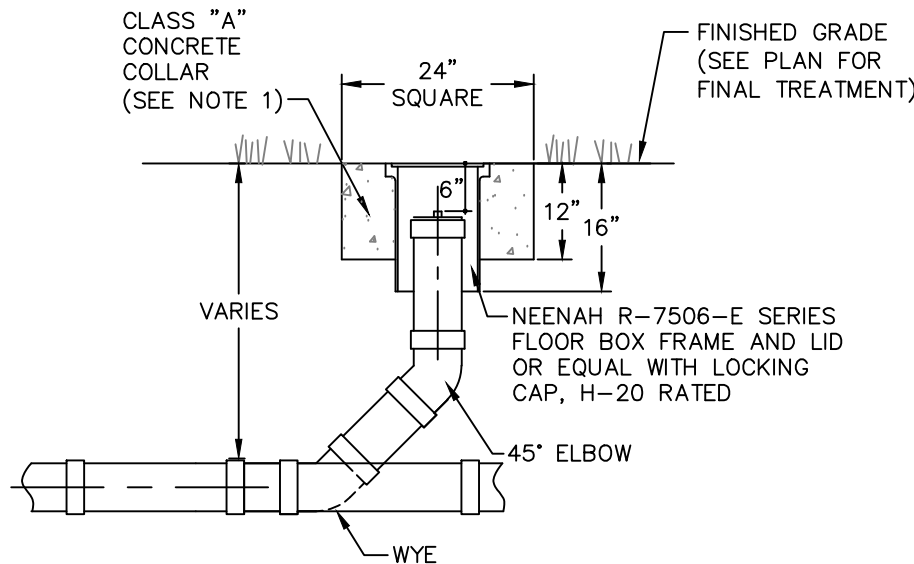
NOTES:  
1. CONCRETE COLLAR TO BE PROVIDED IN AREAS THAT ARE NOT PAVED. THE COLLAR SHALL BE 6\"/>

WATER SHUT-OFF VALVE DETAIL  
NOT TO SCALE



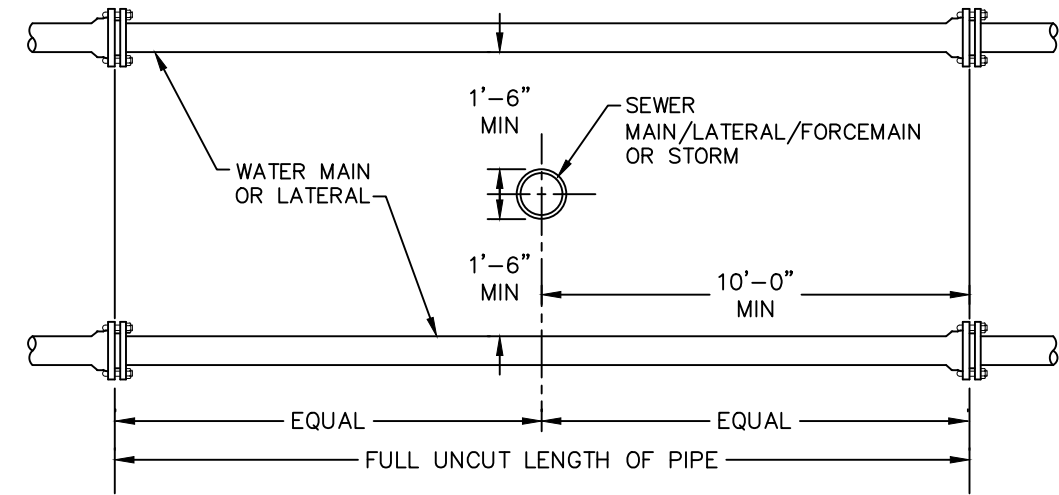
NOTES:  
1. EXCAVATION AND TRENCHING SHALL MEET ALL OSHA REQUIREMENTS.

STORM LINE TRENCH DETAIL  
NOT TO SCALE

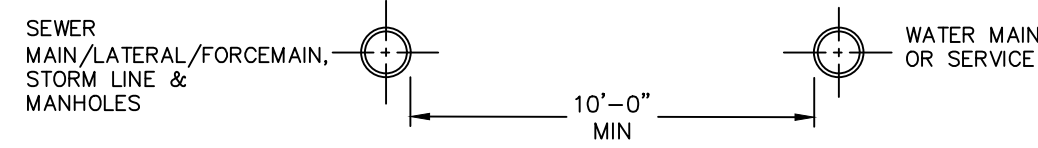


NOTES:  
1. CONCRETE COLLAR TO BE PROVIDED IN AREAS THAT ARE NOT PAVED. THE COLLAR SHALL BE 6\"/>

CLEANOUT DETAIL  
NOT TO SCALE



VERTICAL SEPARATION

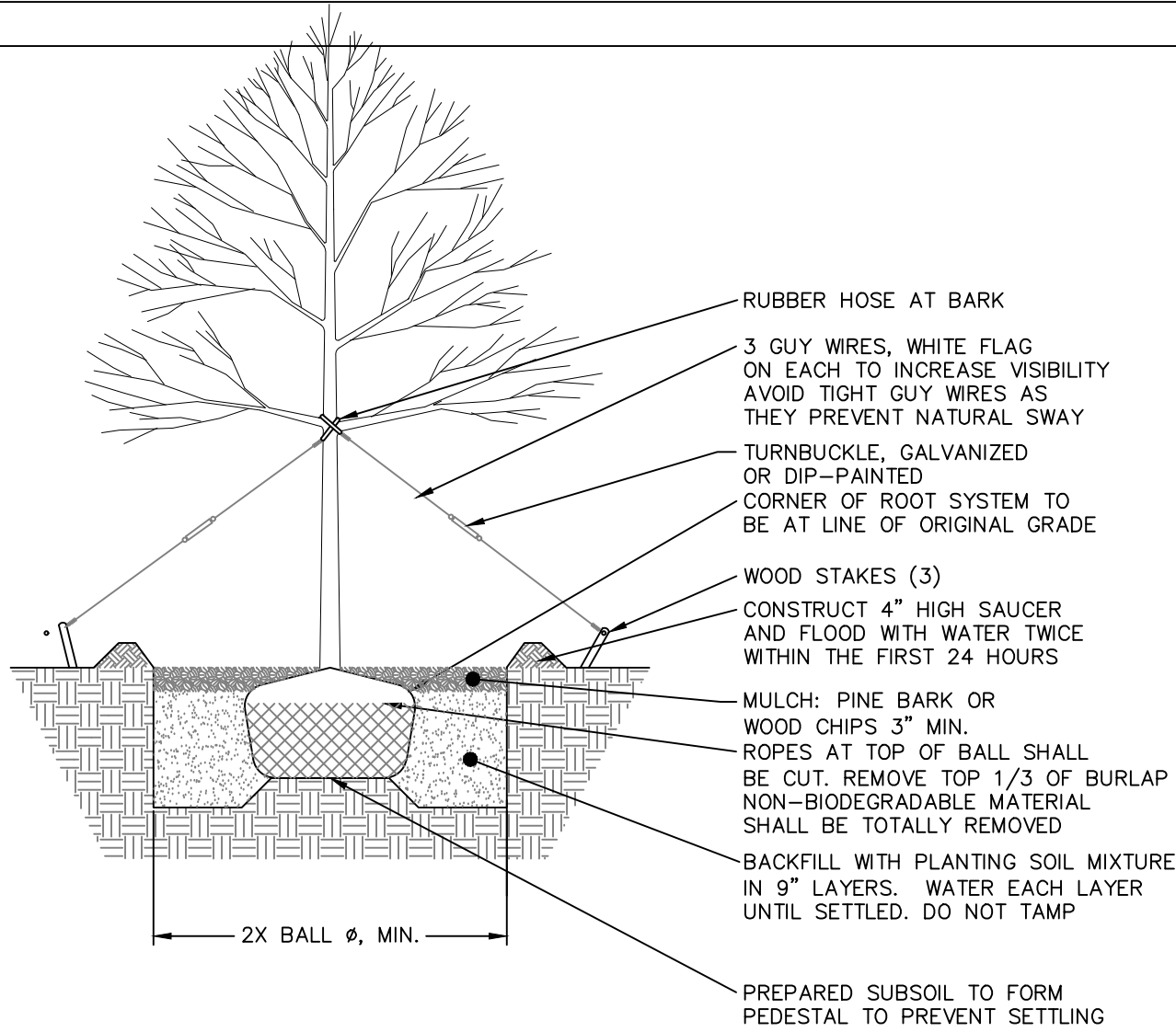


HORIZONTAL SEPARATION

NOTE:

NO DEVIATION IN THE SEPARATION REQUIREMENTS WILL BE PERMITTED WITHOUT THE EXPRESS APPROVAL OF THE DUTCHESS COUNTY DEPARTMENT OF HEALTH AND THE CITY OF BEACON. CONCRETE ENCASEMENT OF WATERLINE OR OFFSETTING OF WATERLINE SHALL BE REQUIRED WHERE SEPARATION DISTANCES CANNOT BE MAINTAINED.

WATER LINE SEPARATION DETAIL  
NOT TO SCALE



NOTES:  
1. PROPOSED TREES TO BE PER PLANS. REFER TO SHEET 2 FOR LOCATIONS.

TREE PLANTING DETAIL  
NOT TO SCALE

APPROVED BY RESOLUTION OF THE PLANNING BOARD OF THE CITY OF BEACON, NEW YORK, ON THE

\_\_\_\_\_ DAY OF \_\_\_\_\_, 20\_\_\_\_, SUBJECT TO ALL REQUIREMENTS AND CONDITIONS OF SAID RESOLUTION. ANY CHANGE, ERASURE, MODIFICATION OR REVISION OF THIS PLAT, AS APPROVED, SHALL VOID THIS APPROVAL.

SIGNED THIS \_\_\_\_\_ DAY OF \_\_\_\_\_, 20\_\_\_\_, BY

\_\_\_\_\_ CHAIRMAN

\_\_\_\_\_ SECRETARY

IN ABSENCE OF THE CHAIRMAN OR SECRETARY, THE ACTING CHAIRMAN OR ACTING SECRETARY RESPECTIVELY MAY SIGN IN THIS PLACE.

## CONSTRUCTION DETAILS 32 ALICE ST. SUBDIVISION

32 ALICE STREET  
CITY OF BEACON  
DUTCHESS COUNTY, NEW YORK  
TAX ID: 6054-47-320616  
SCALE: 1" = 20'  
JUNE 26, 2018



HUDSON LAND DESIGN  
PROFESSIONAL ENGINEERING P.C.

174 MAIN STREET  
BEACON, NEW YORK 12508  
PH: 845-440-6926 F: 845-440-6637



SEAL

JON D. BODENDORF, P.E.  
NYS LICENSE NO. 076245  
DANIEL G. KOEHLER, P.E.  
NYS LICENSE NO. 082716

SHEET: 4 OF 4



DRAWN BY: AG		CHECKED BY: DGK	JOB NO.: 2018:014
REVISIONS:			
NO.	DATE	DESCRIPTION	BY