

PLANNING BOARD APPROVAL

Approved by the Planning Board of the City of Beacon, Dutchess County, N.Y. by resolution dated _____.

Signed this ____ day of _____, 20__.

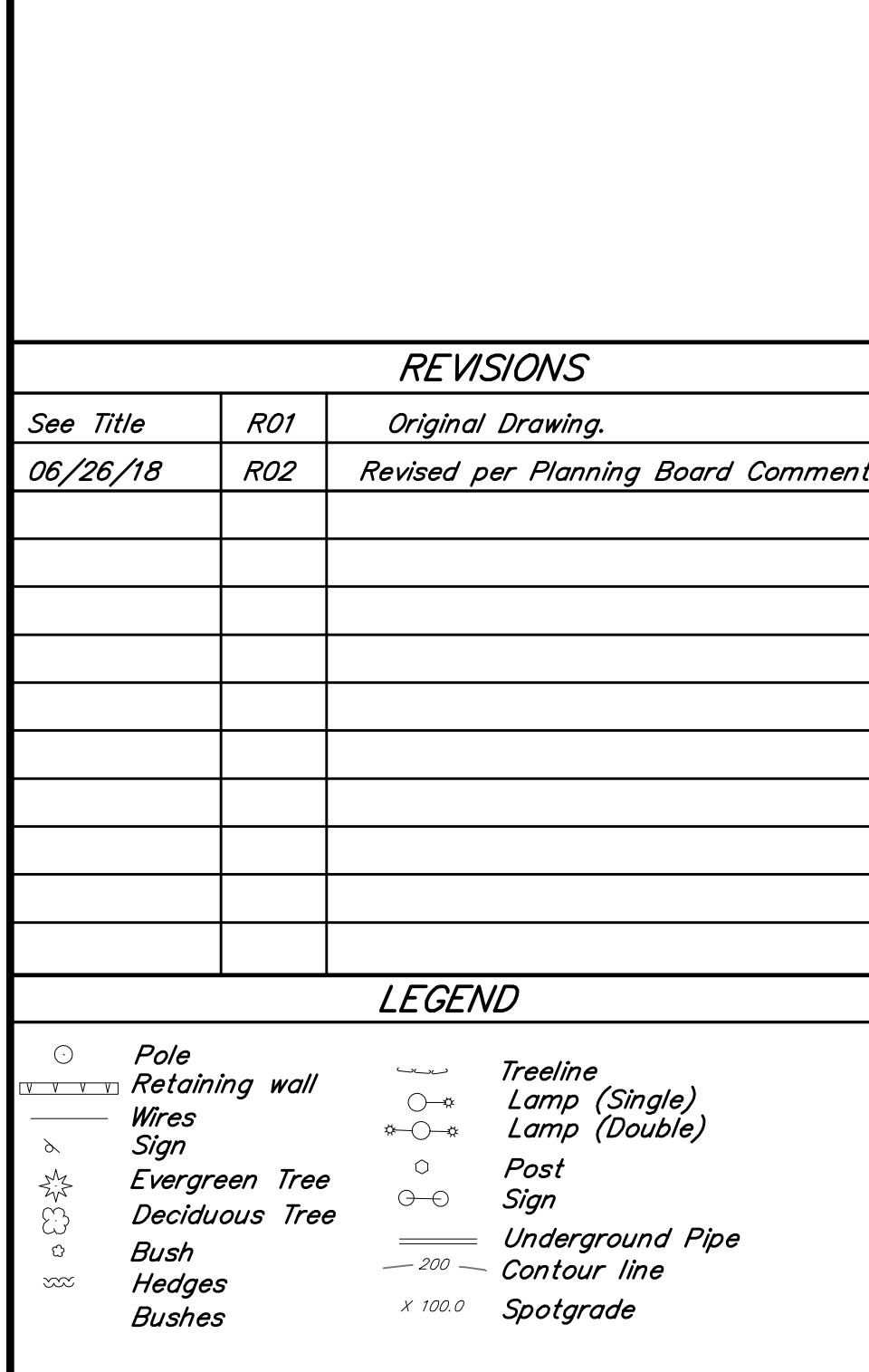
Chair of the Planning Board

NOTES

- Unauthorized alteration or addition to a document prepared by a licensed Land Surveyor or licensed Professional Engineer is a violation of Section 2209, Sub-Division 2 of the New York State Education Law.
- The topographic data herein was compiled photographically from digital aerial photographs, dated April 2003, with 2 inch pixels. The compilation scale was 1 inch to 550 feet.
- The area, meridian, distances and coordinate values shown herein refer to the New York Coordinate System, East Zone (NAD 83), expressed in feet. The distances shown on this map are grid distances. They have been scaled by a grid factor (scale factor x sea level factor) of 0.9999952. To obtain ground distances divide the distances on this map by the grid factor. To obtain ground area divide the area on this map by the square of the grid factor.
- The vertical datum herein is North American Vertical Datum of 1988 (NAVD 1988).

REVISIONS

See Title	Revised by	Original Drawing
06/26/18	R01	Original Drawing
	R02	Revised per Planning Board Comment

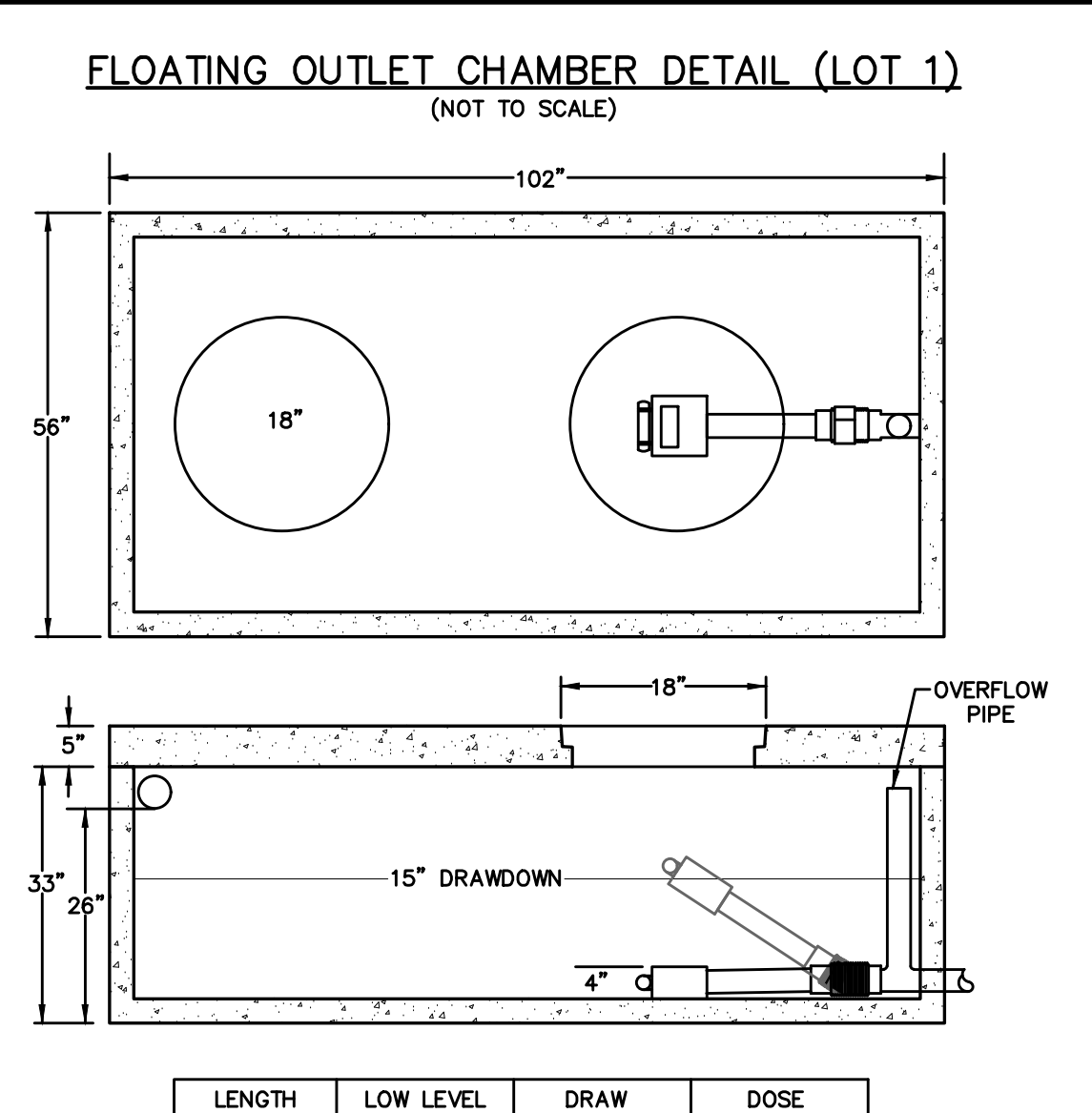
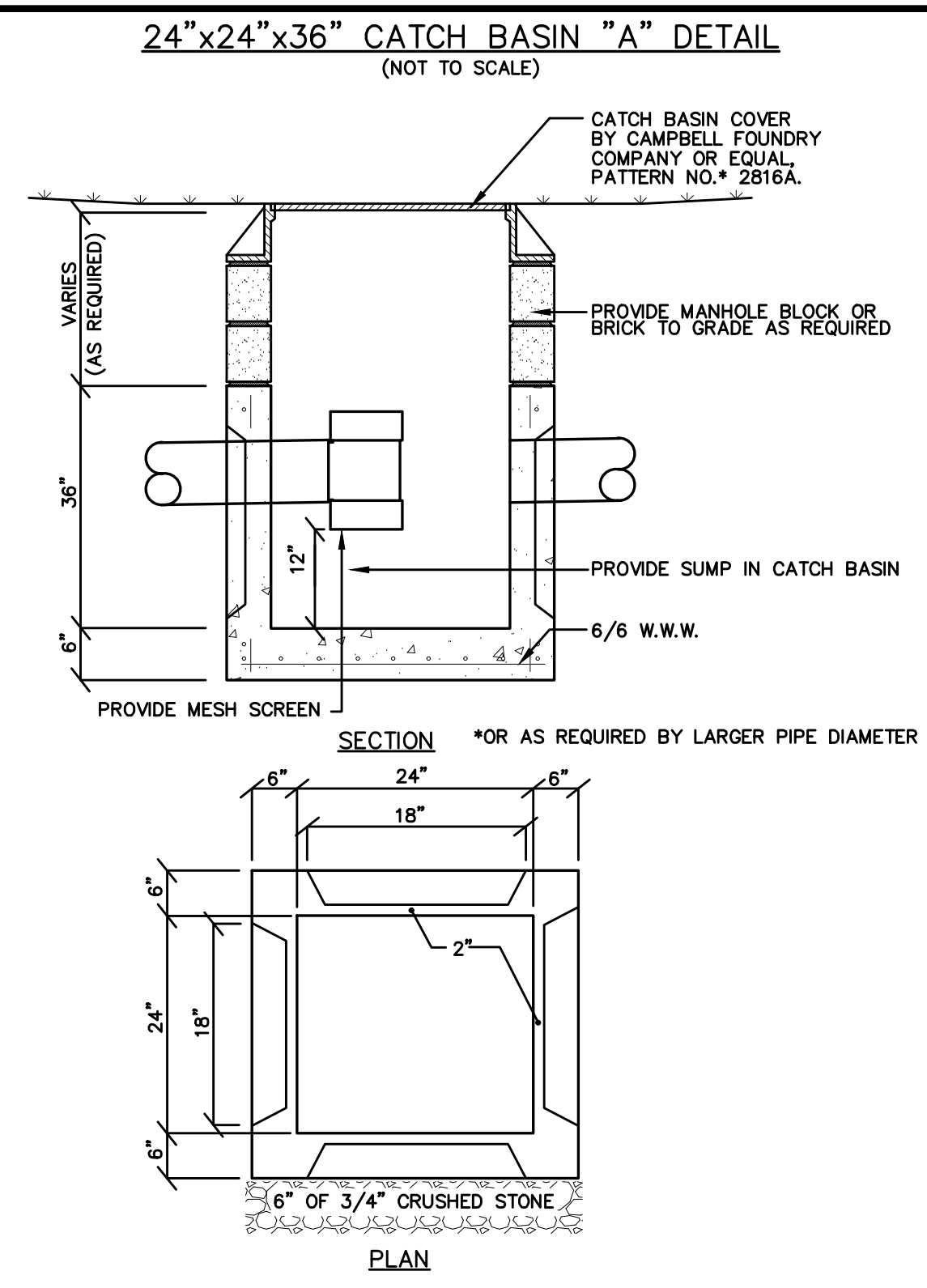


ENGINEER

BADLEY & WATSON
Surveying & Engineering, P.C.

3563 Route 9
Cold Spring, NY 10516
www.Badley-Watson.com

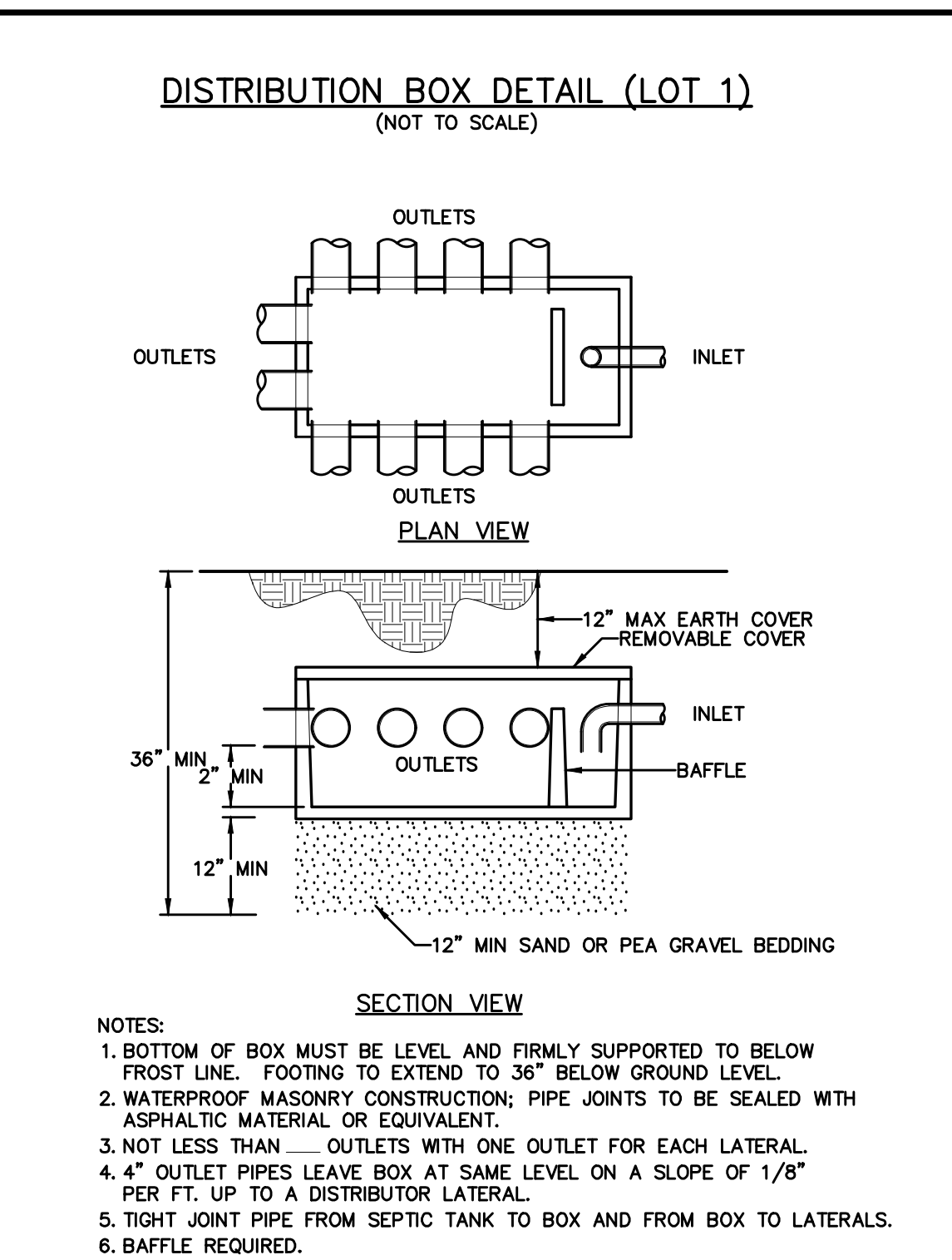
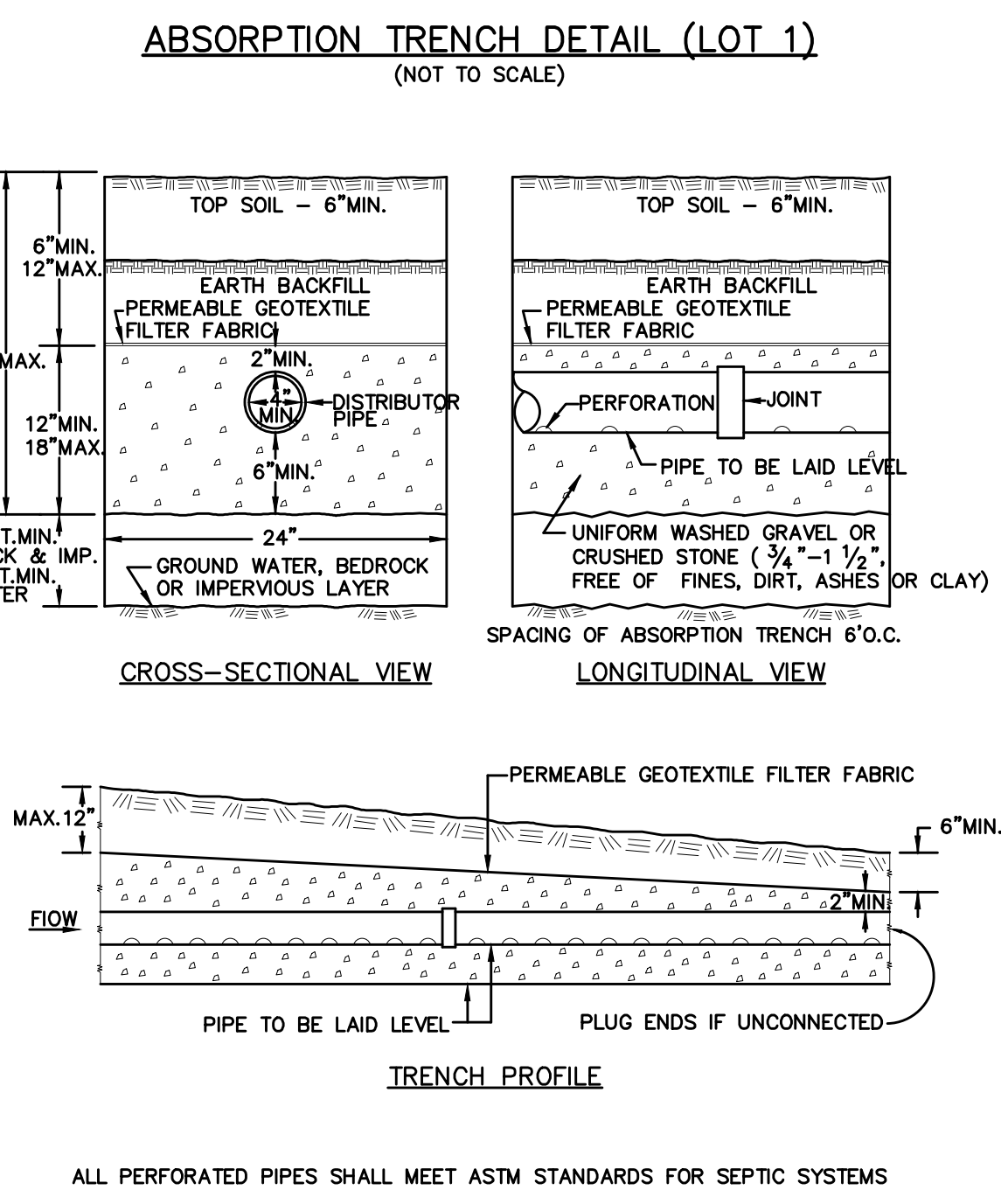
845.265.9317
845.265.4438 (Fax)
877.3.141.991 (Toll Free)



SPECIFICATIONS:

- CONCRETE MINIMUM STRENGTH: 4,000 PSI @ 28 DAYS
- STEEL REINFORCEMENT PER ASTM A36 - 1/2" x 12"
- CAPABLE OF WITHSTANDING H=20 WHEEL LOADING OF 20,000 LBS.

AS MANUFACTURED BY MID-HUDSON CONCRETE PRODUCTS, INC.

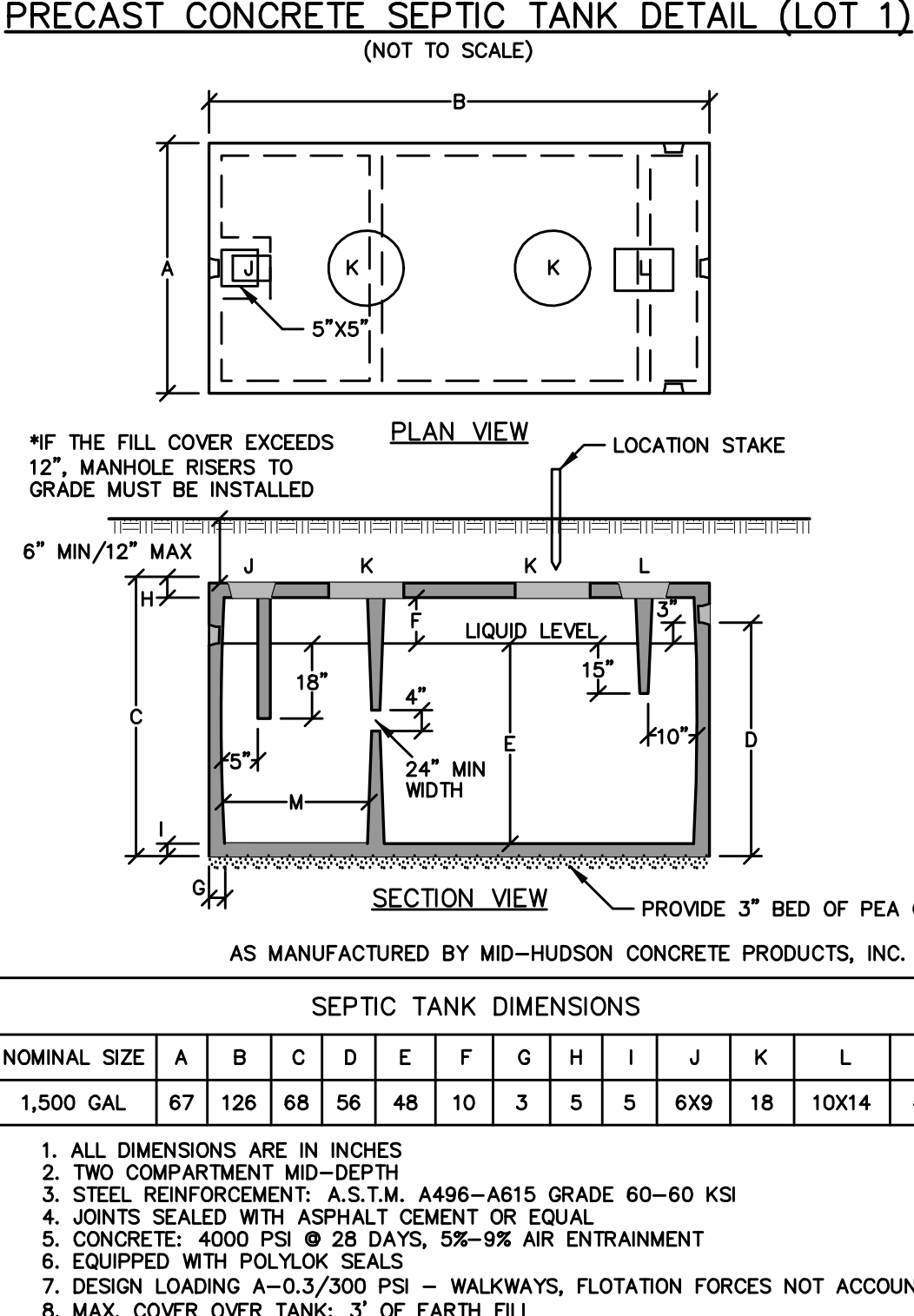
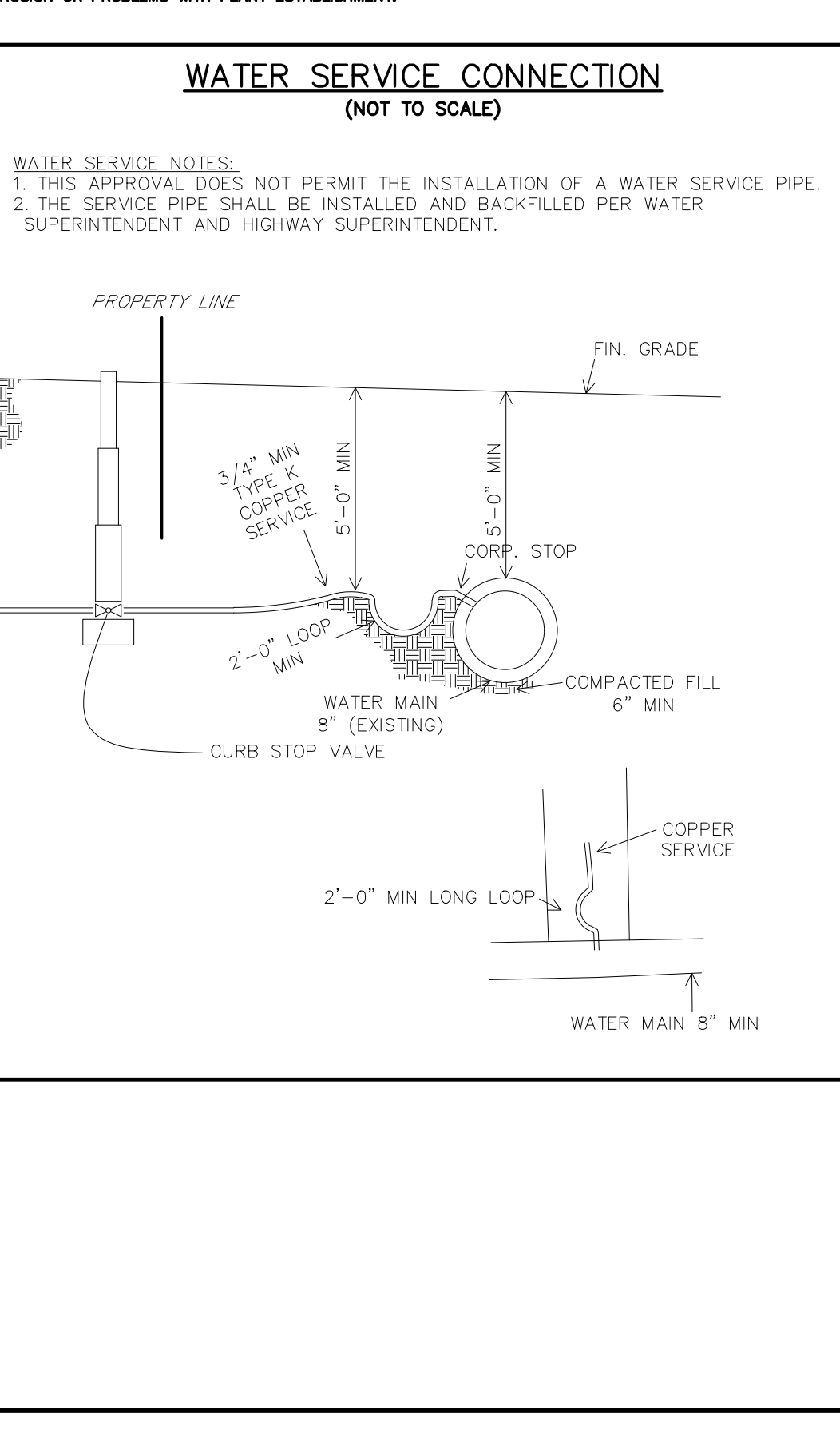
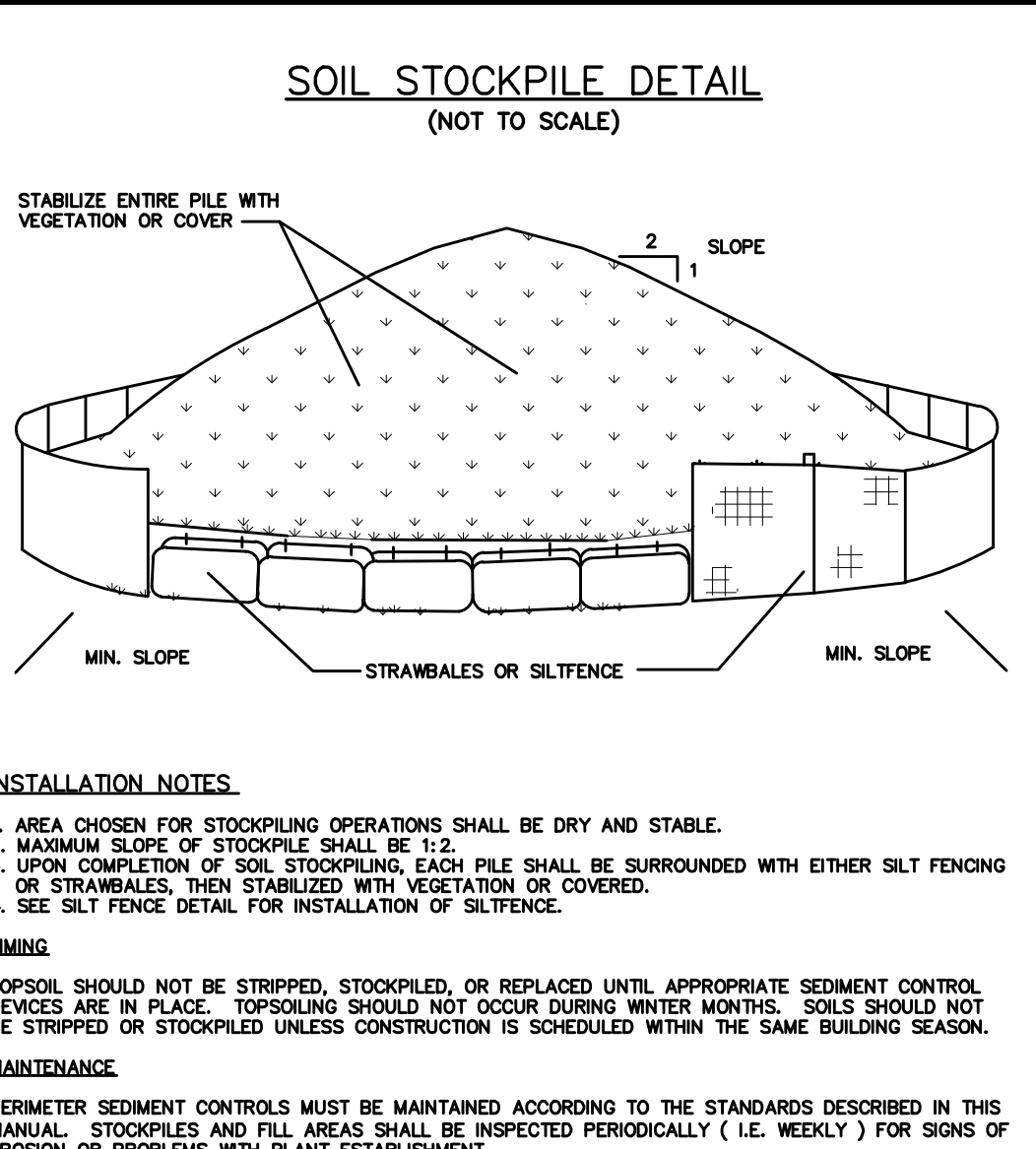
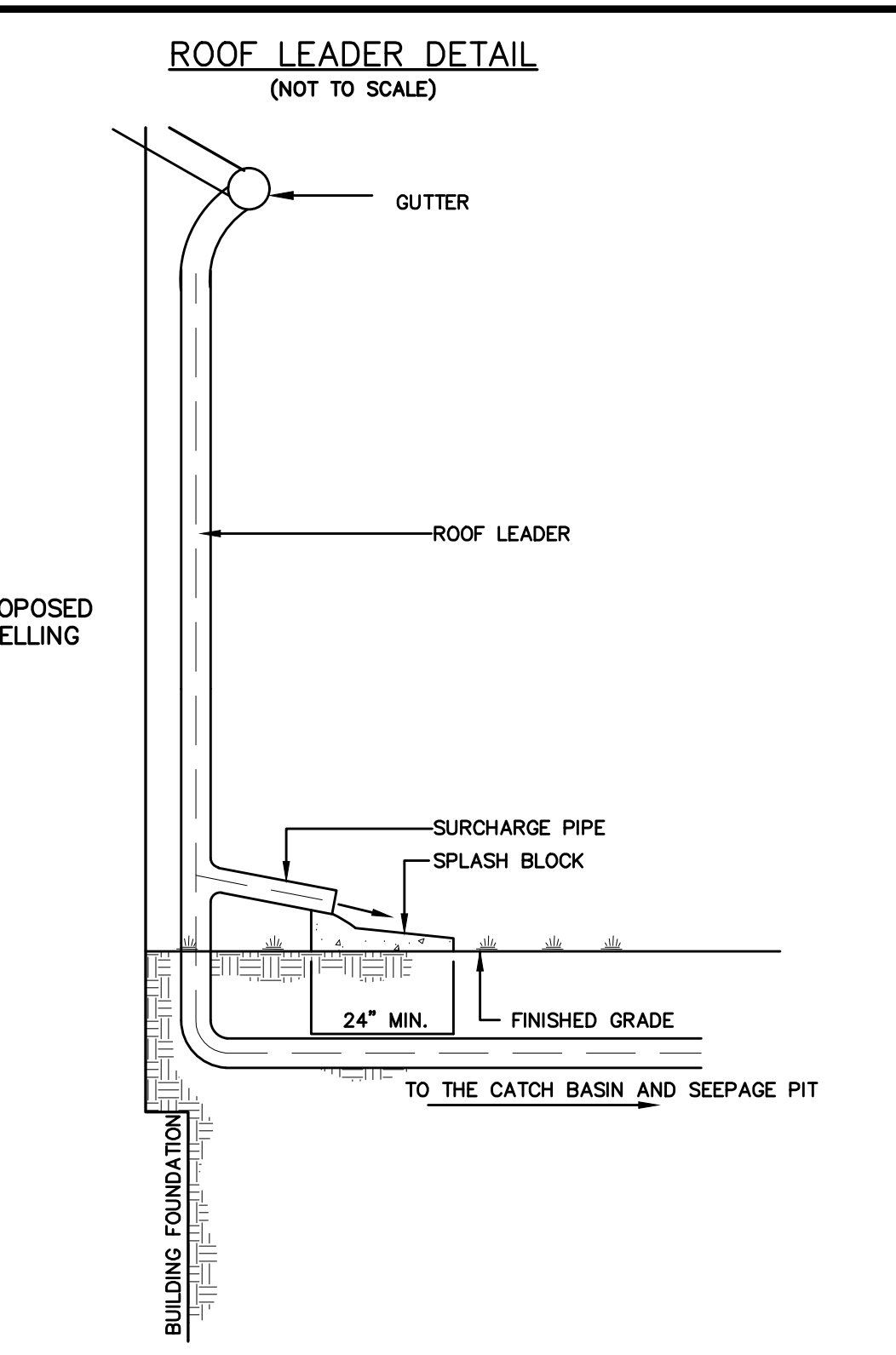


ENGINEER

BADLEY & WATSON
Surveying & Engineering, P.C.

3563 Route 9
Cold Spring, NY 10516
www.Badley-Watson.com

845.265.9317
845.265.4438 (Fax)
877.3.141.991 (Toll Free)



ENGINEER

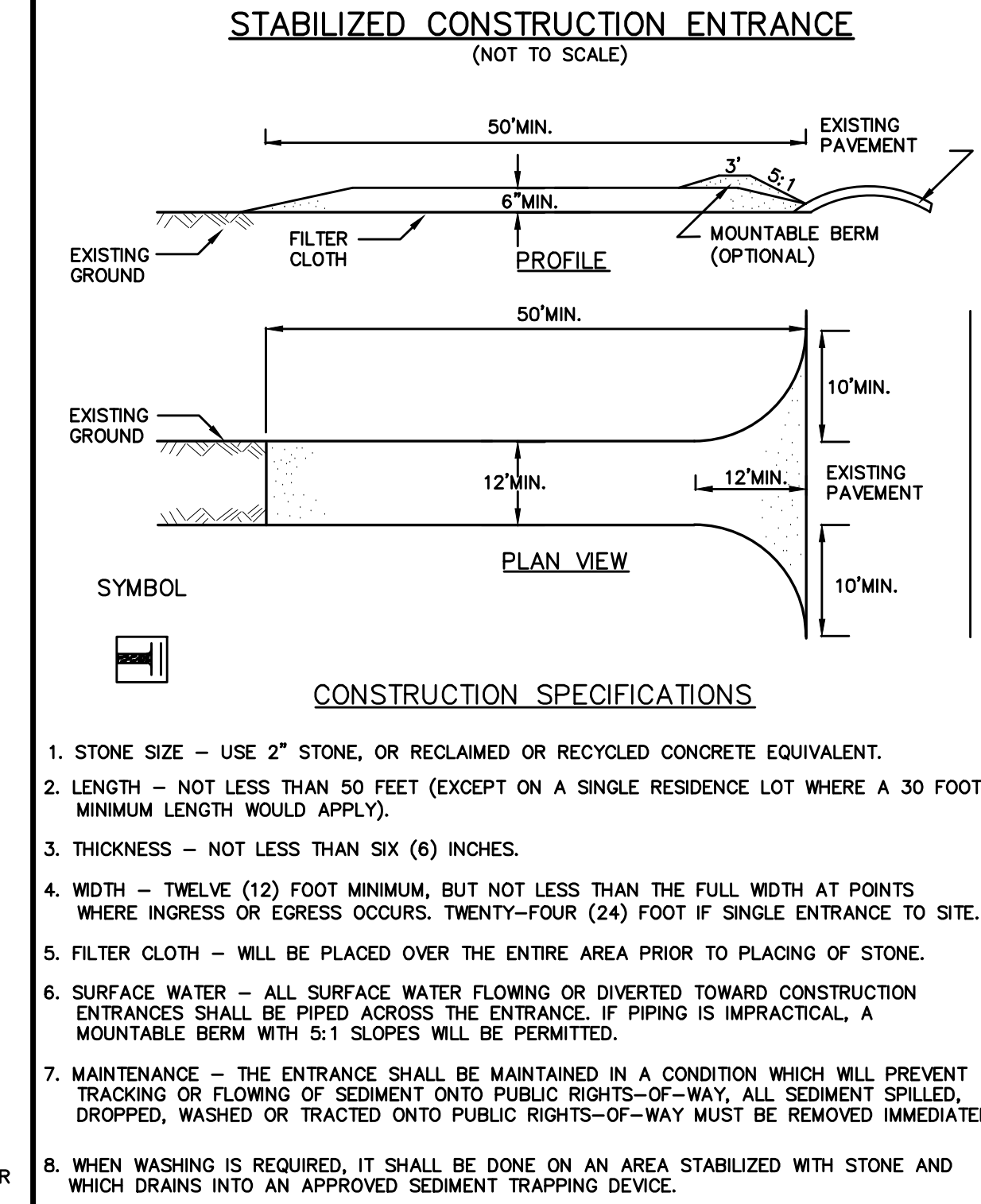
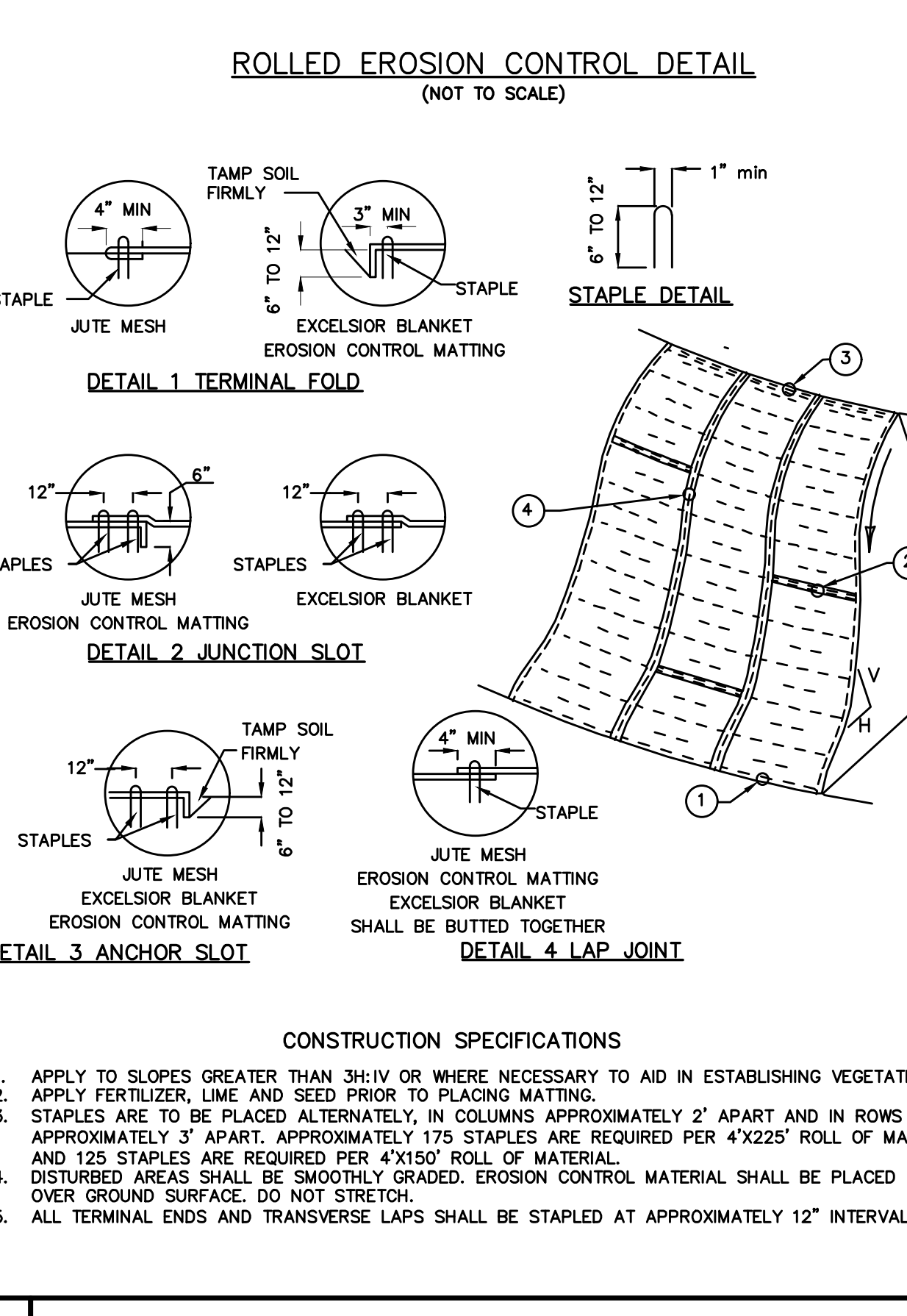
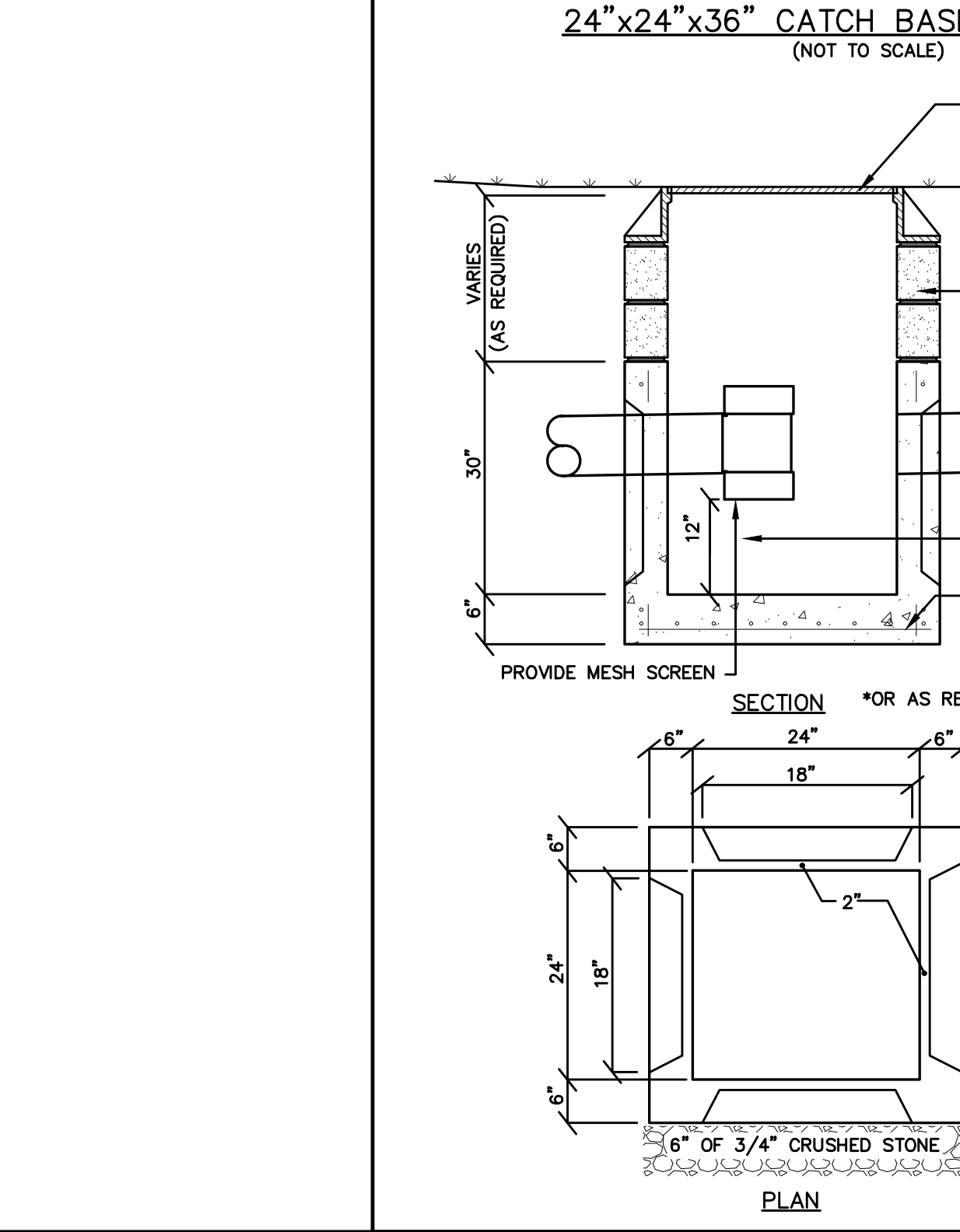
BADLEY & WATSON
Surveying & Engineering, P.C.

3563 Route 9
Cold Spring, NY 10516
www.Badley-Watson.com

845.265.9317
845.265.4438 (Fax)
877.3.141.991 (Toll Free)

LOT 1 CONSTRUCTION NOTES FOR SUBSURFACE SEWAGE TREATMENT SYSTEMS SERVING SINGLE-FAMILY RESIDENCES

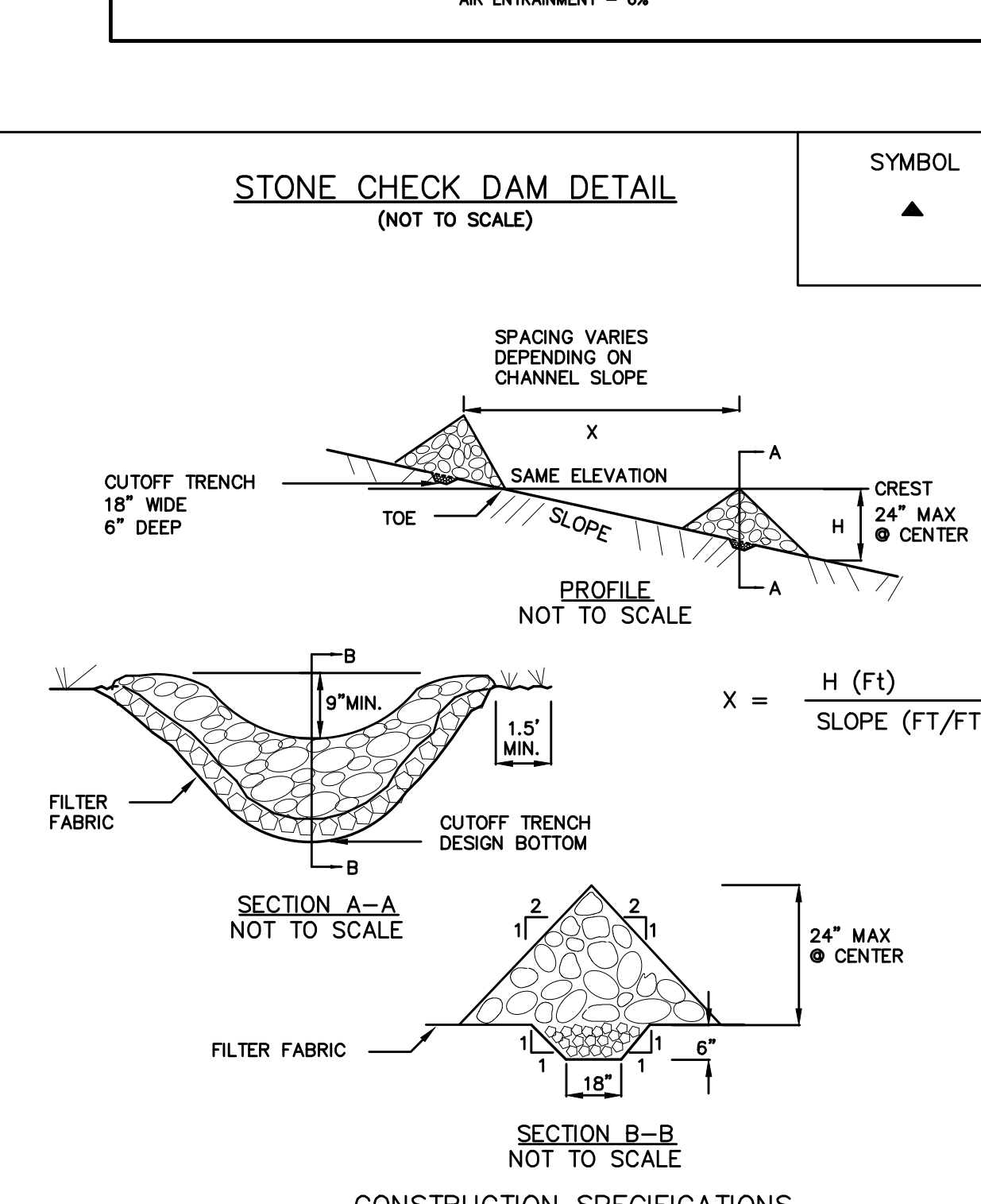
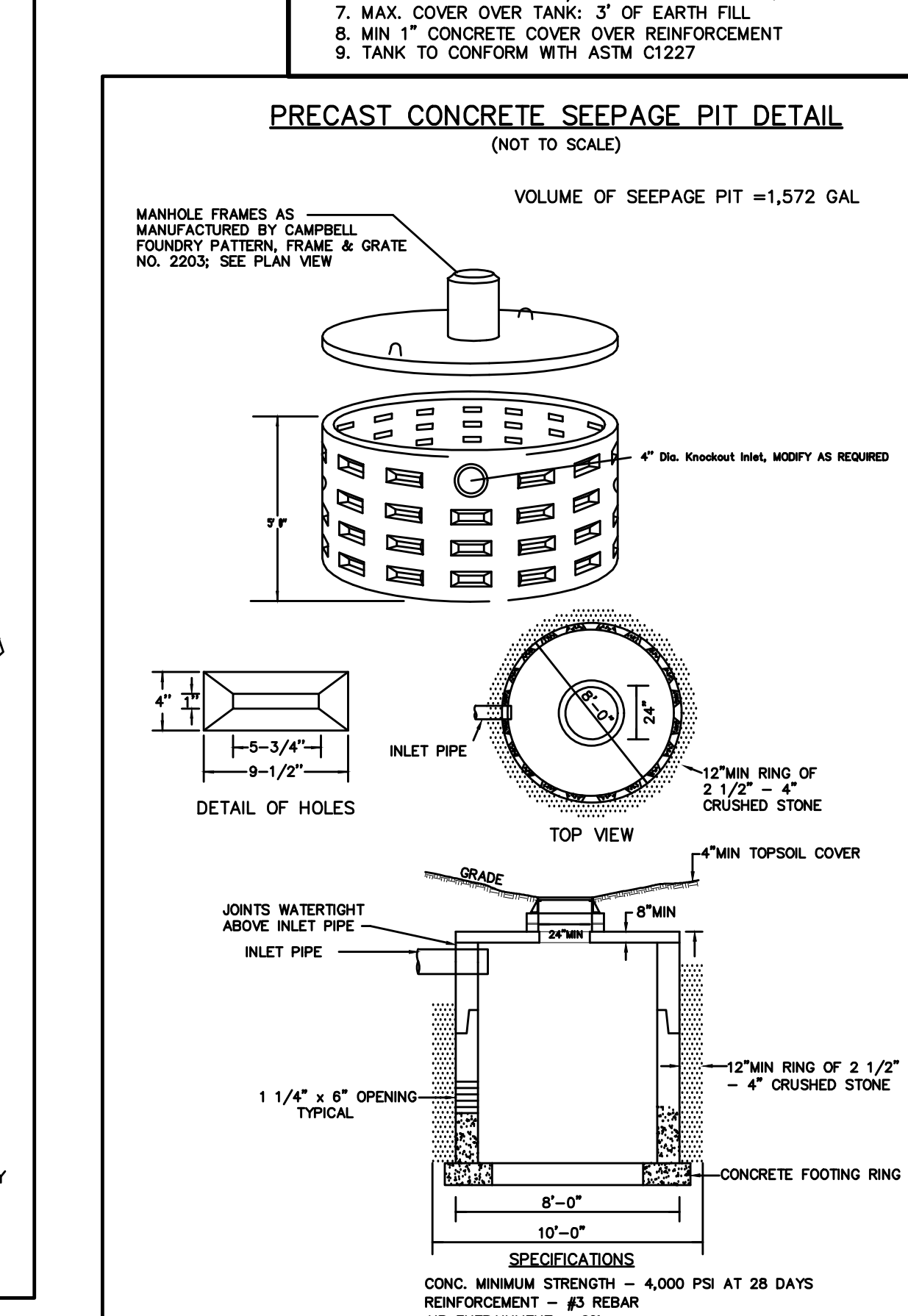
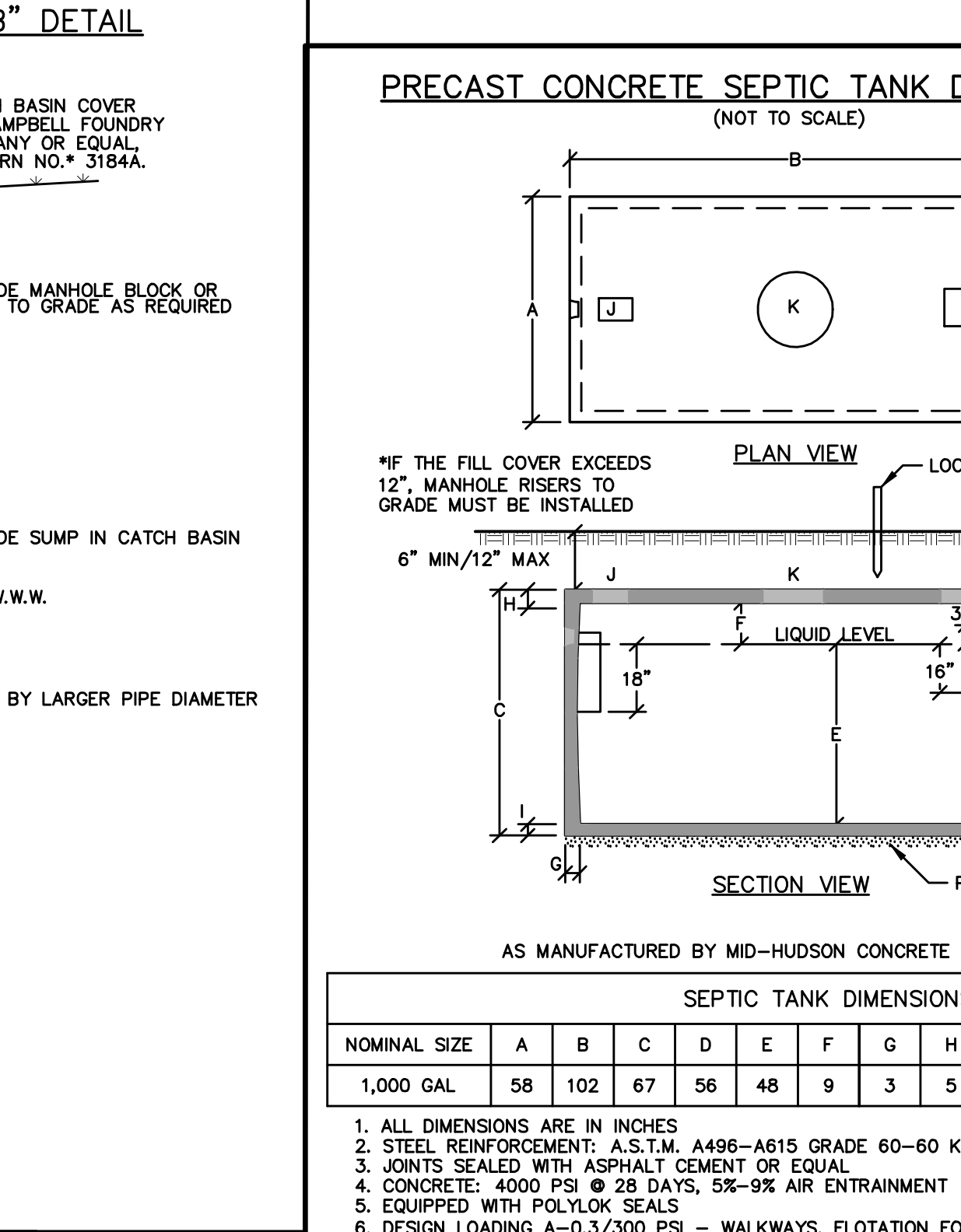
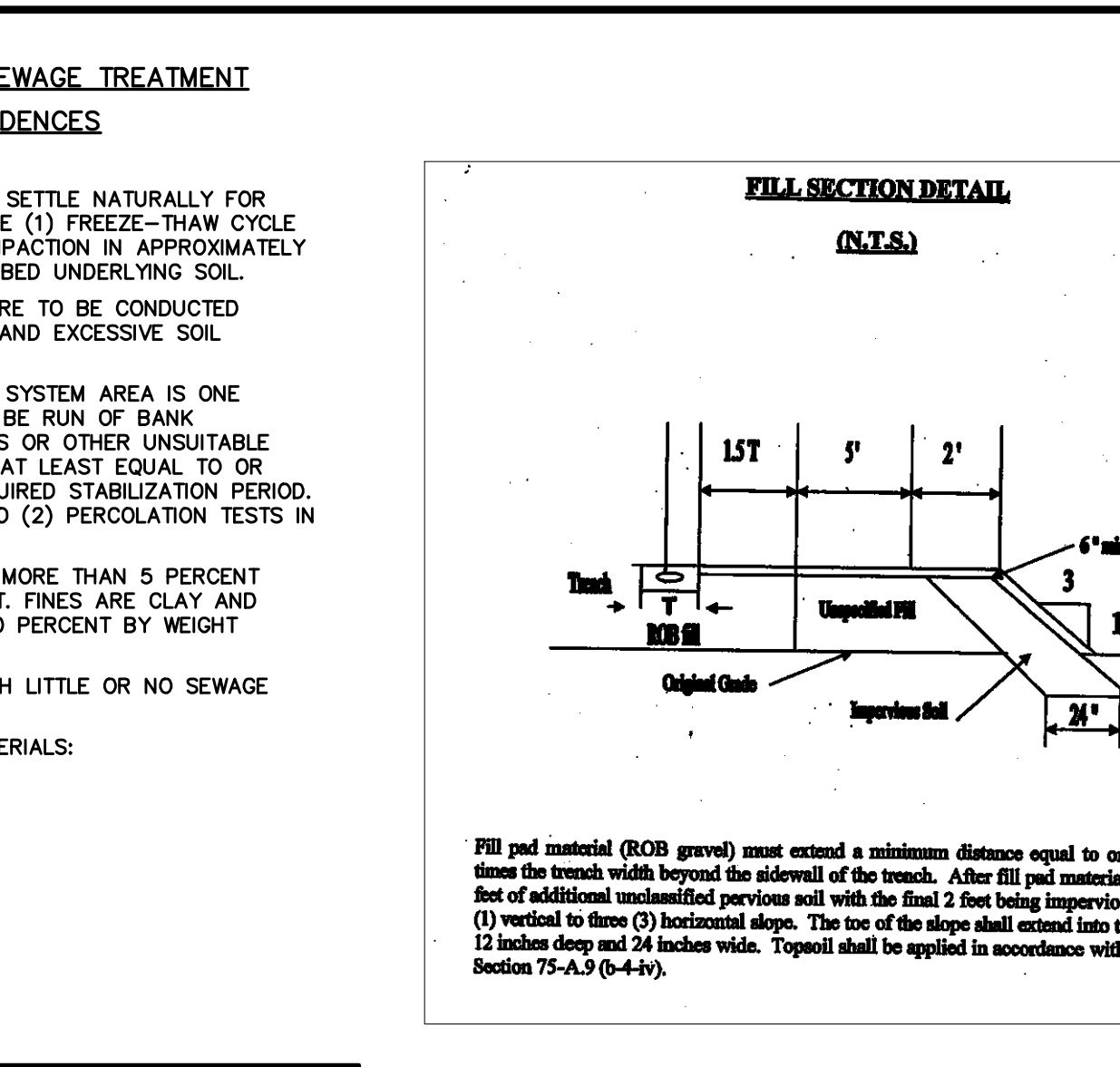
- FILL MUST BE STABILIZED BY ALLOWING THE FILL MATERIAL TO SETTLE NATURALLY FOR A PERIOD OF AT LEAST 6 MONTHS AND INCLUDE AT LEAST ONE (1) FREEZE-THAW CYCLE OR FILL STABILIZATION MAY BE ACHIEVED BY MECHANICAL COMPACTION IN APPROXIMATELY 6 INCH LIFTS TO THE APPROXIMATE DENSITY OF THE UNDISTURBED UNDERLYING SOIL.
- SITE MODIFICATION ACTIVITIES INVOLVING PLACEMENT OF FILL ARE TO BE CONDUCTED DURING RELATIVELY DRY PERIODS TO MINIMIZE SOIL SMEARING AND EXCESSIVE SOIL COMPACTION.
- THE REQUIRED DEPTH OF FILL WITHIN THE SEWAGE TREATMENT SYSTEM AREA IS ONE FOOT WHICH APPROXIMATES TO 130 CUBIC YARDS. FILL SHALL BE RUN OF BANK GRAVEL, SUITABLE FOR SEWAGE ABSORPTION, BE FREE OF FINES OR OTHER UNSUITABLE MATERIAL AND SHALL HAVE AN IN-PLACE PERCOLATION RATE AT LEAST EQUAL TO OR FASTER THAN THE NATURAL UNDERLYING SOIL AFTER THE REQUIRED STABILIZATION PERIOD. THE DESIGN PROFESSIONAL SHALL PERFORM A MINIMUM OF TWO (2) PERCOLATION TESTS IN THE FILL AFTER STABILIZATION IS ACHIEVED.
- FILL SUITABLE FOR SEWAGE ABSORPTION SHOULD CONTAIN NO MORE THAN 5 PERCENT AND PREFERABLY NO MORE THAN 2 PERCENT FINES BY WEIGHT. FINES ARE CLAY AND SILT PARTICLES THAT PASS A #200 SIEVE. NO MORE THAN 10 PERCENT BY WEIGHT OF THE FILL MATERIAL SHOULD PASS A #100 SIEVE.
- THE IMPERVIOUS FILL SHALL BE A DENSE CLAY TYPE SOIL WITH LITTLE OR NO SEWAGE ABSORPTION CAPACITY.
- THIS IS AN ESTIMATE OF MATERIAL IN PLACE, VOLUME OF MATERIALS:
(THIS IS AN ESTIMATE OF FILL IN PLACE)
R.O.B. FILL 130 CY
UNDISTURBED FILL 0 CY
IMPERVIOUS SOIL 20 CY
TOP SOIL 20 CY



OWNER'S APPROVAL

The undersigned, owner of the property hereon, states that they are familiar with this map, its contents and its legends and hereby consents to the filing of this map.

Signed this ____ day of _____, 20__.

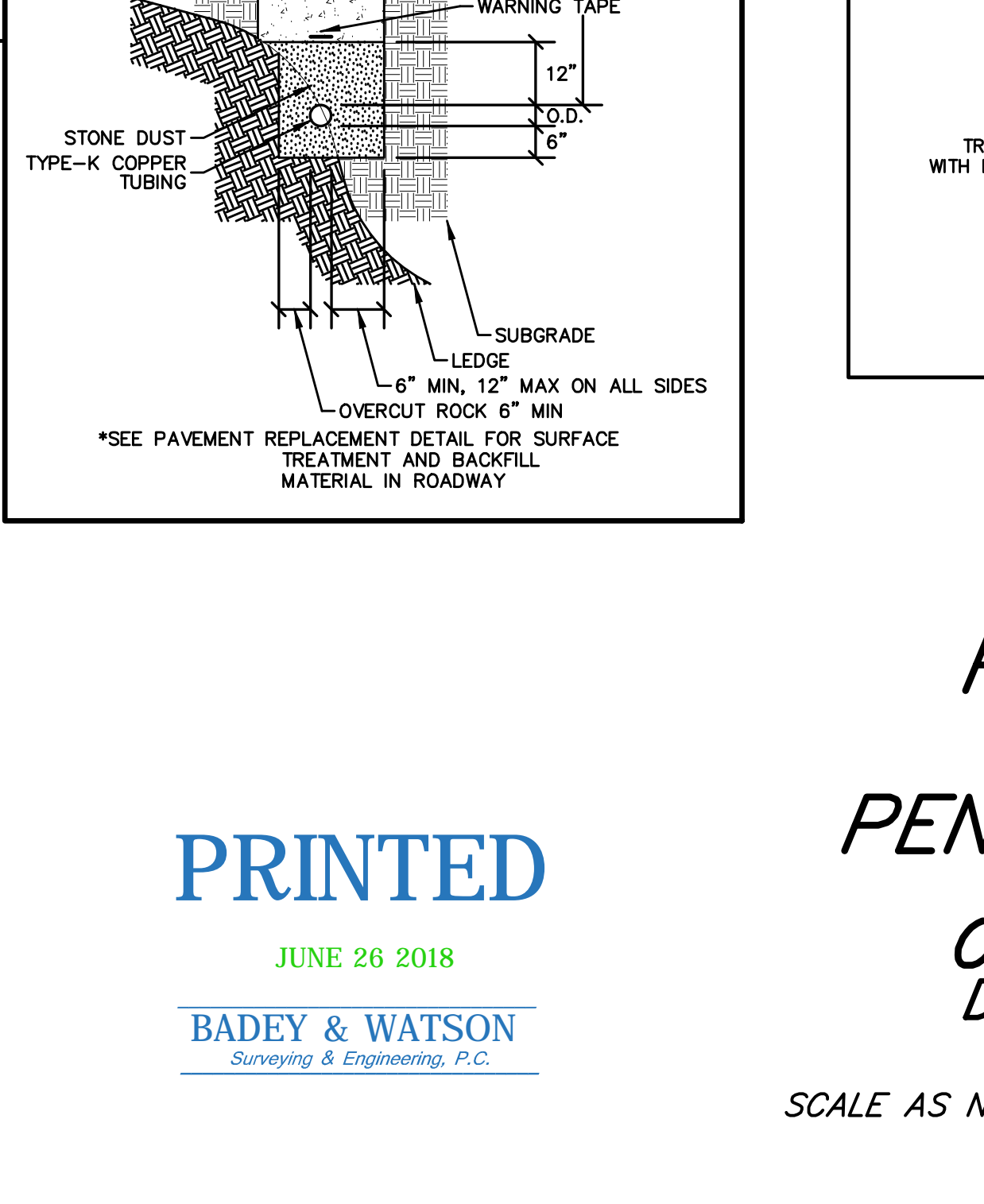
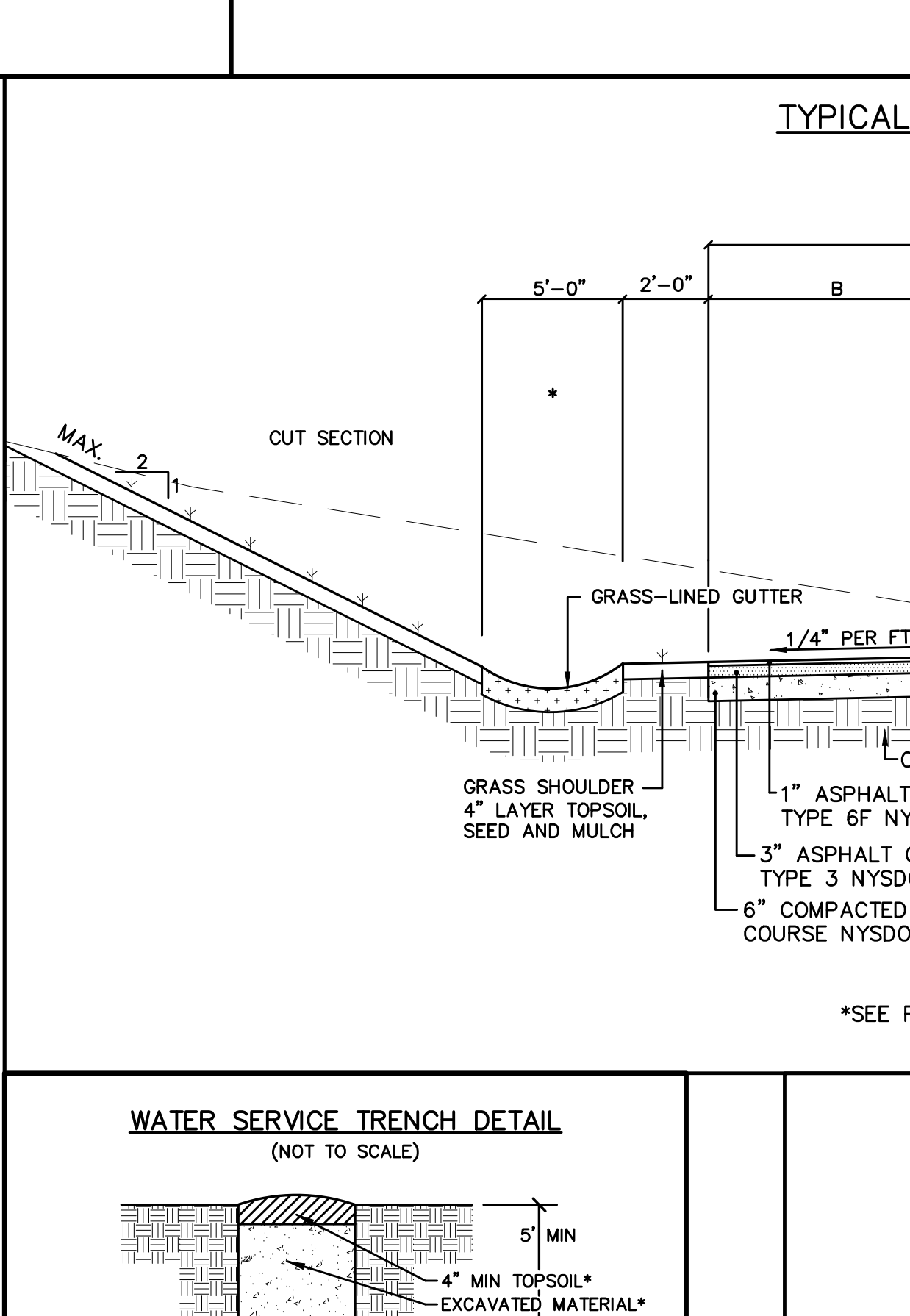
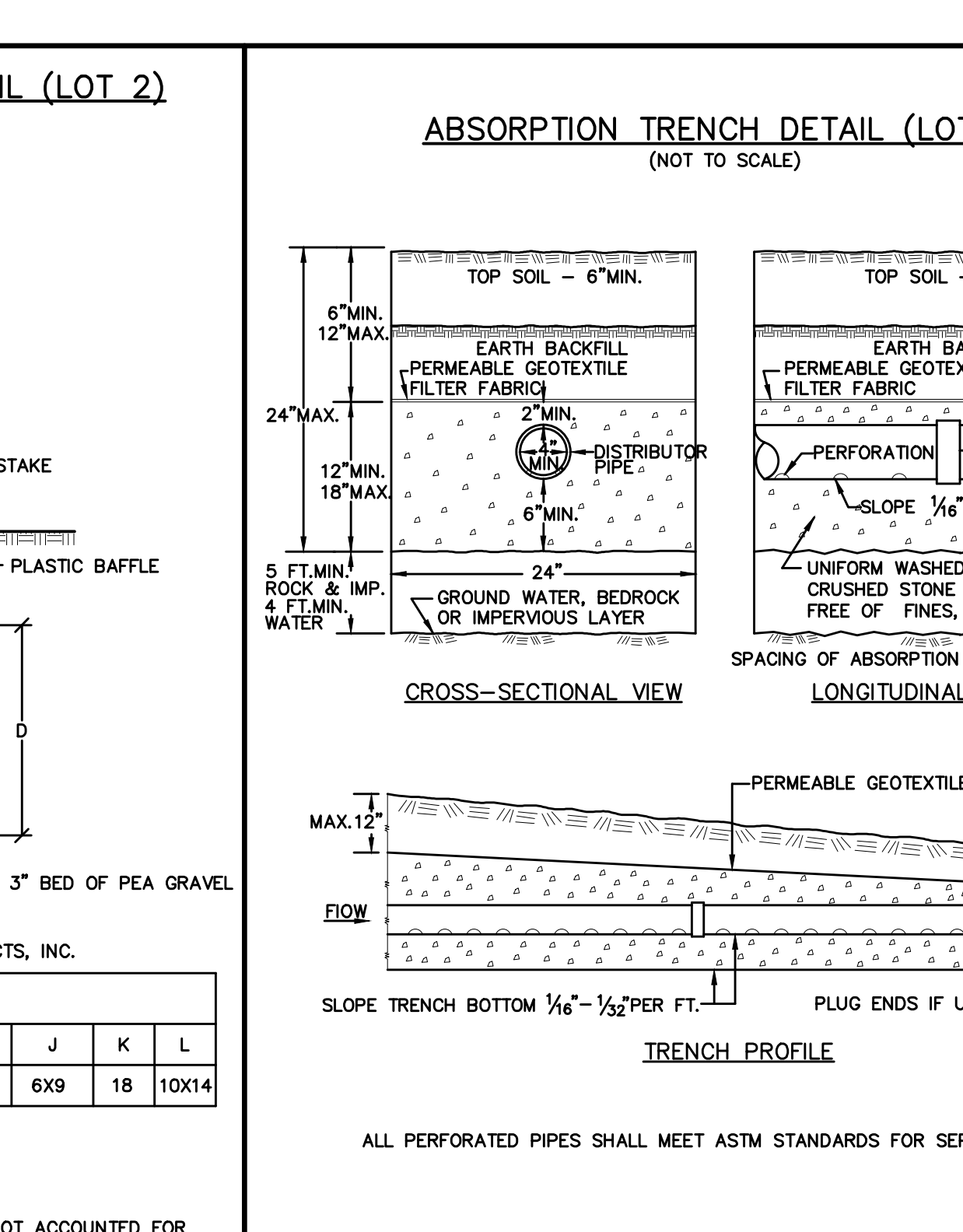
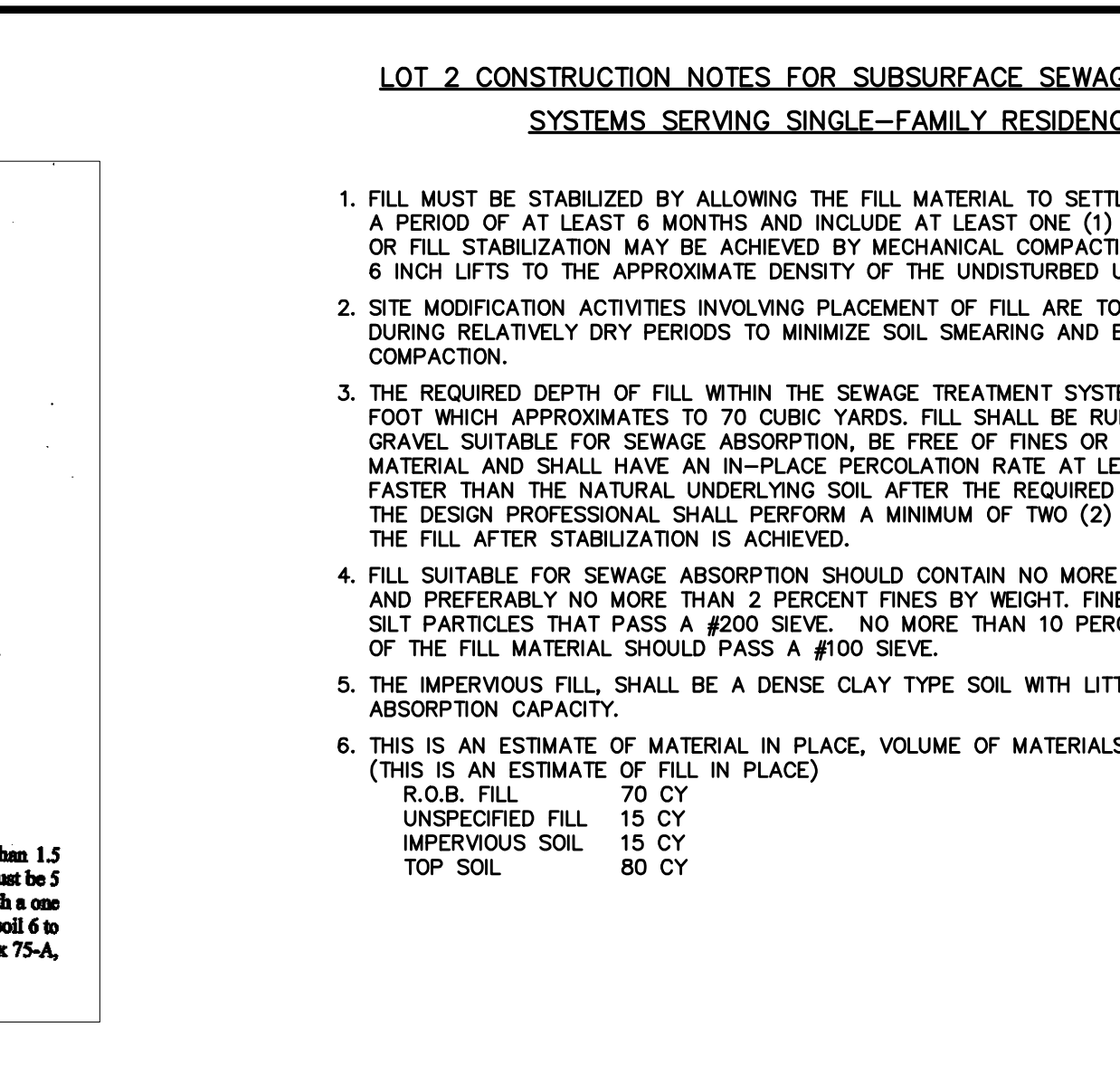


PROPERTY DATA

Tax Map Designation:
6054-02-53593

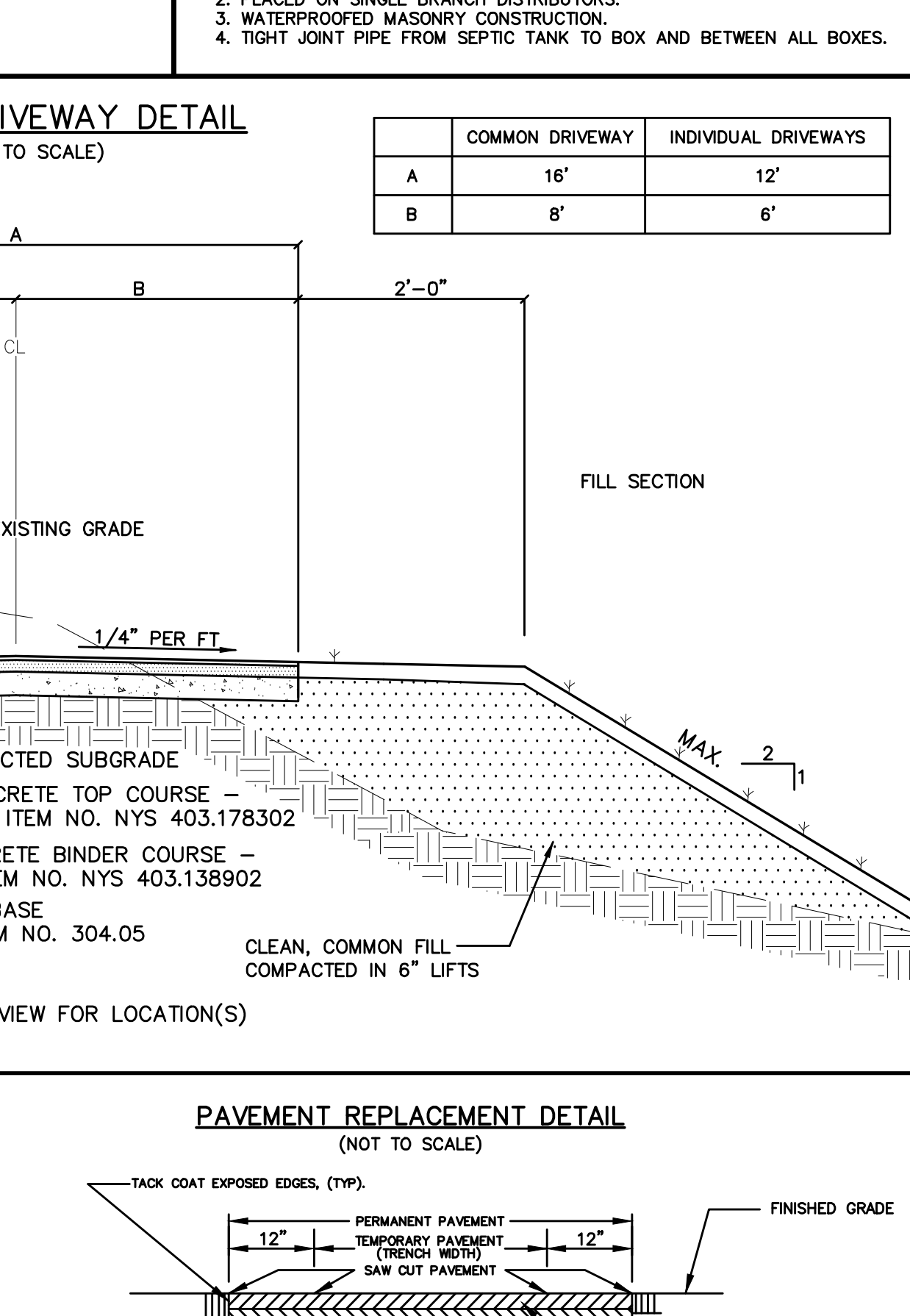
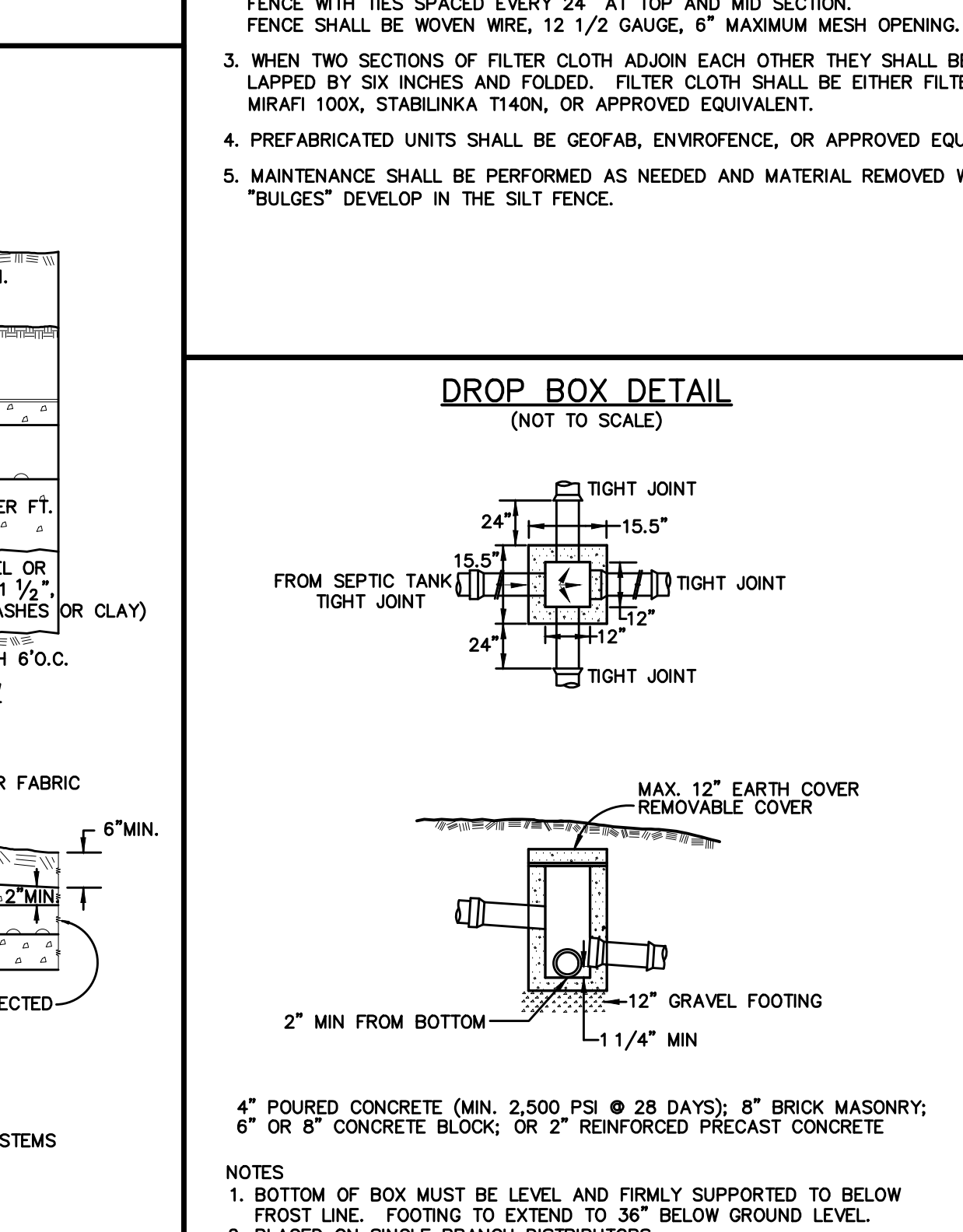
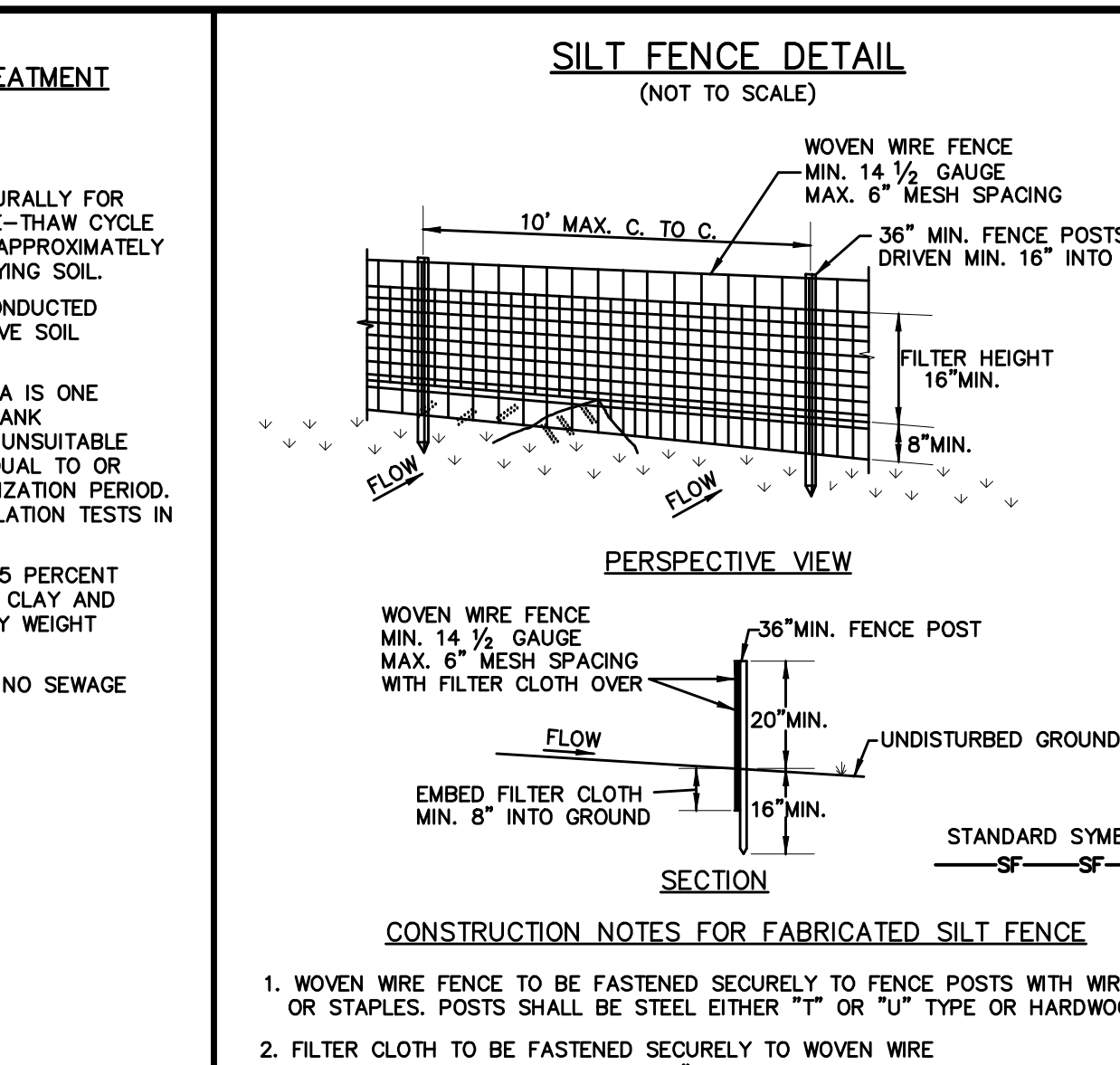
Zoning:
District: R1-80

Total Area: 5.527 AC



WARNING STAMP

ALTERATION OF THIS DOCUMENT, IN ANY WAY, BY ANY PERSON NOT UNDER THE DIRECTION OF A LICENSED PROFESSIONAL ENGINEER OR LAND SURVEYOR, AS APPROPRIATE, IS A VIOLATION OF THE EDUCATION LAW OF THE STATE OF NEW YORK.



SHEET 2 OF 3

DETAILS

PRELIMINARY

SUBDIVISION PLAT

FOR

PENELOPE HEDGES

SITUATE IN THE

CITY OF BEACON

DUTCHESS COUNTY

NEW YORK

SCALE AS NOTED

APRIL 19, 2018

I hereby certify that this subdivision plat was prepared by me, and was made from an actual survey completed by me in May of 2014. For latest issue date see revision box.

Gary LaTour, L.S.

PRELIMINARY

by

NEW YORK STATE LICENSED LAND SURVEYOR

LICENSE NO. 49457

FILE NO. 83-9177