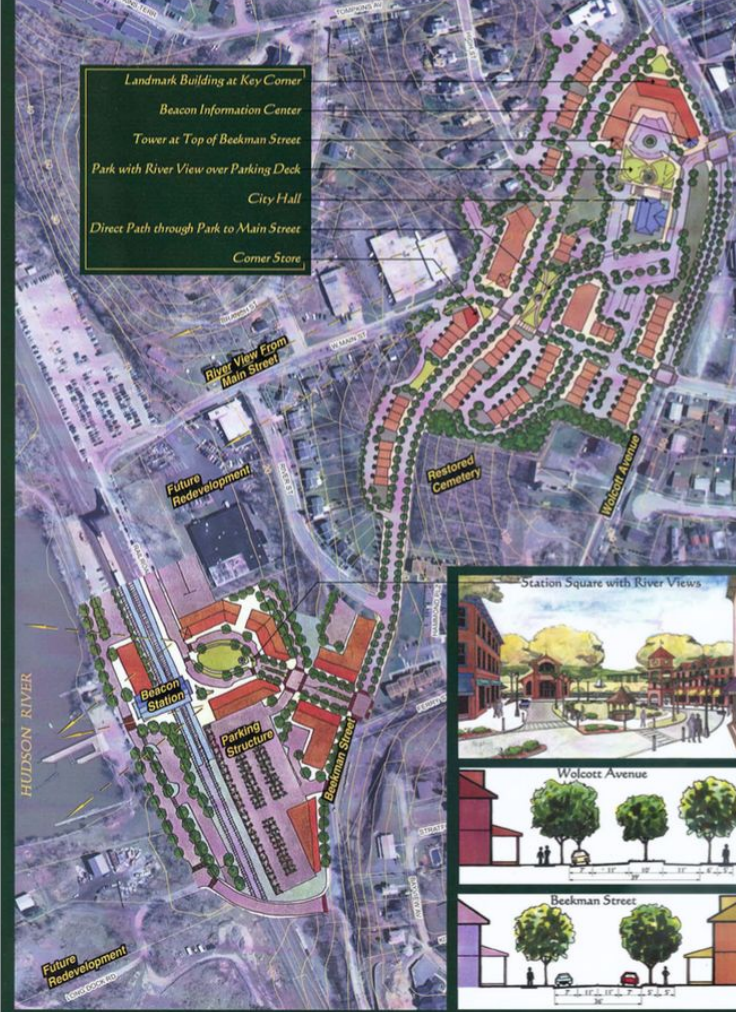
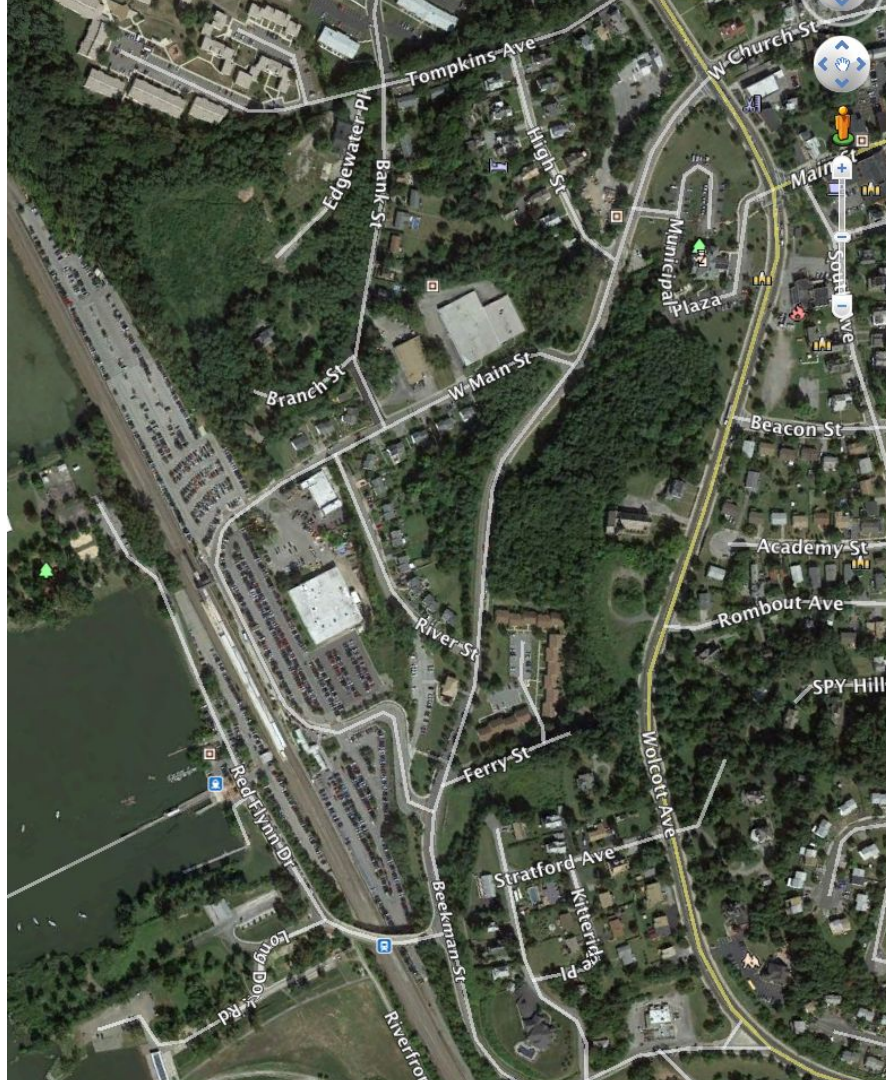


# Team Dutchess Mentors

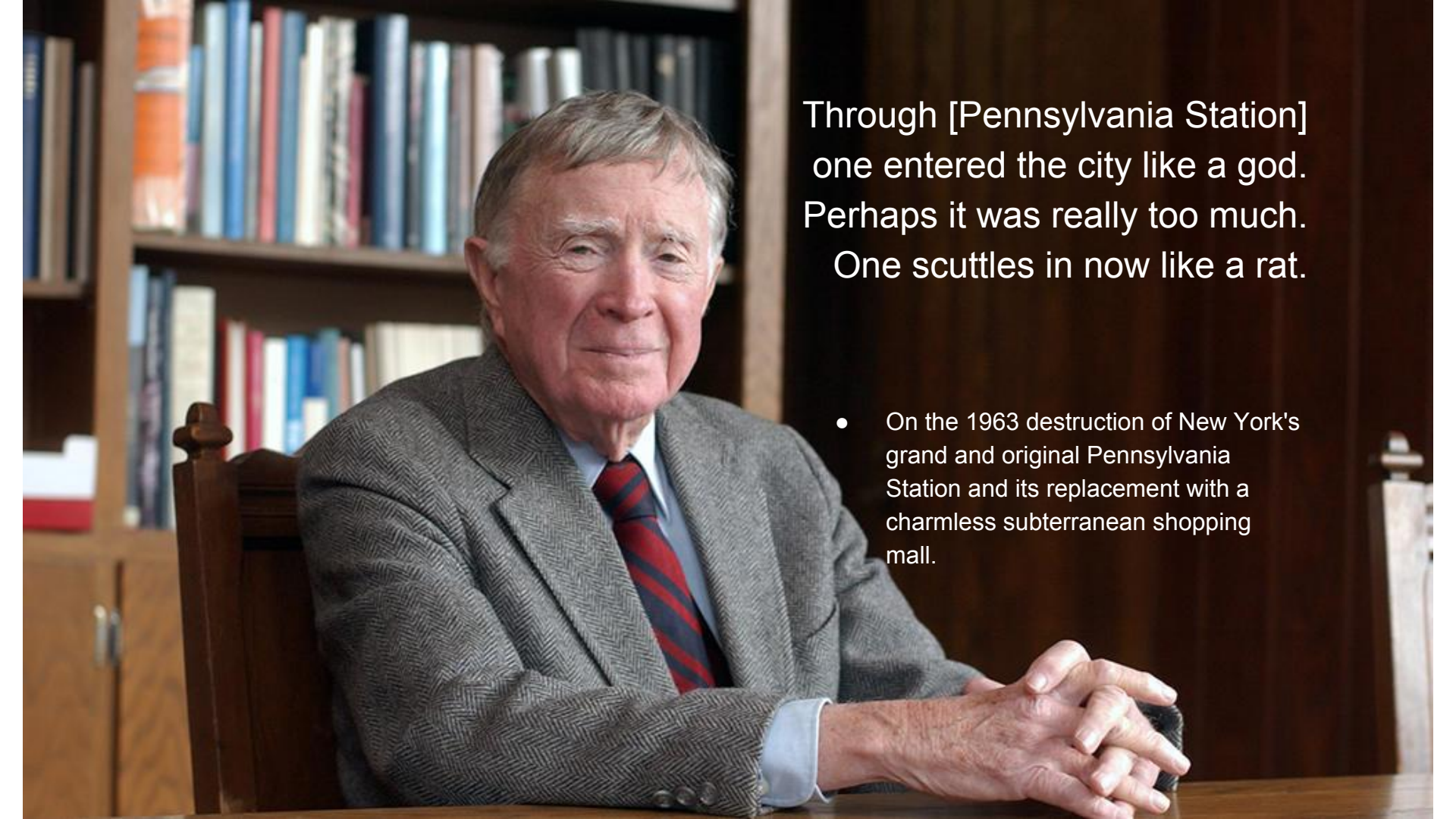
Michael R. Berta	AIA	David Freeman	AIA
Larry Boudreau	RLA	Di W. George	Architect Intern
J.C. Calderón	AIA	James Rhodes	FAIA
George Cronk	PE	Antony Tseng	EIT
Dexter Douglass	Architect Intern	Stephen A. Whalen	RA



Connecting Beacon's Main Street with the Hudson River and Railroad Station







Through [Pennsylvania Station]  
one entered the city like a god.  
Perhaps it was really too much.  
One scuttles in now like a rat.

- On the 1963 destruction of New York's grand and original Pennsylvania Station and its replacement with a charmless subterranean shopping mall.















Welcome to Metro-North  
On-Board fares are higher. Please purchase  
your tickets before boarding the train.



To All Trains

COFFEE  
STUFF  
ON PLATFORM  
NEARBY

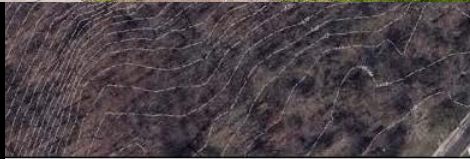
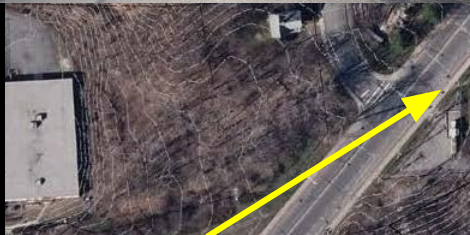
Attention To Boardwalk:  
On Board there are signs. Please position  
your coffee where boarding the train.

MTA  
NEWSPAPER  
NEWSPAPER  
BOTTLES  
& CANS  
TRASH

Boardwalk  
Cross  
Exit

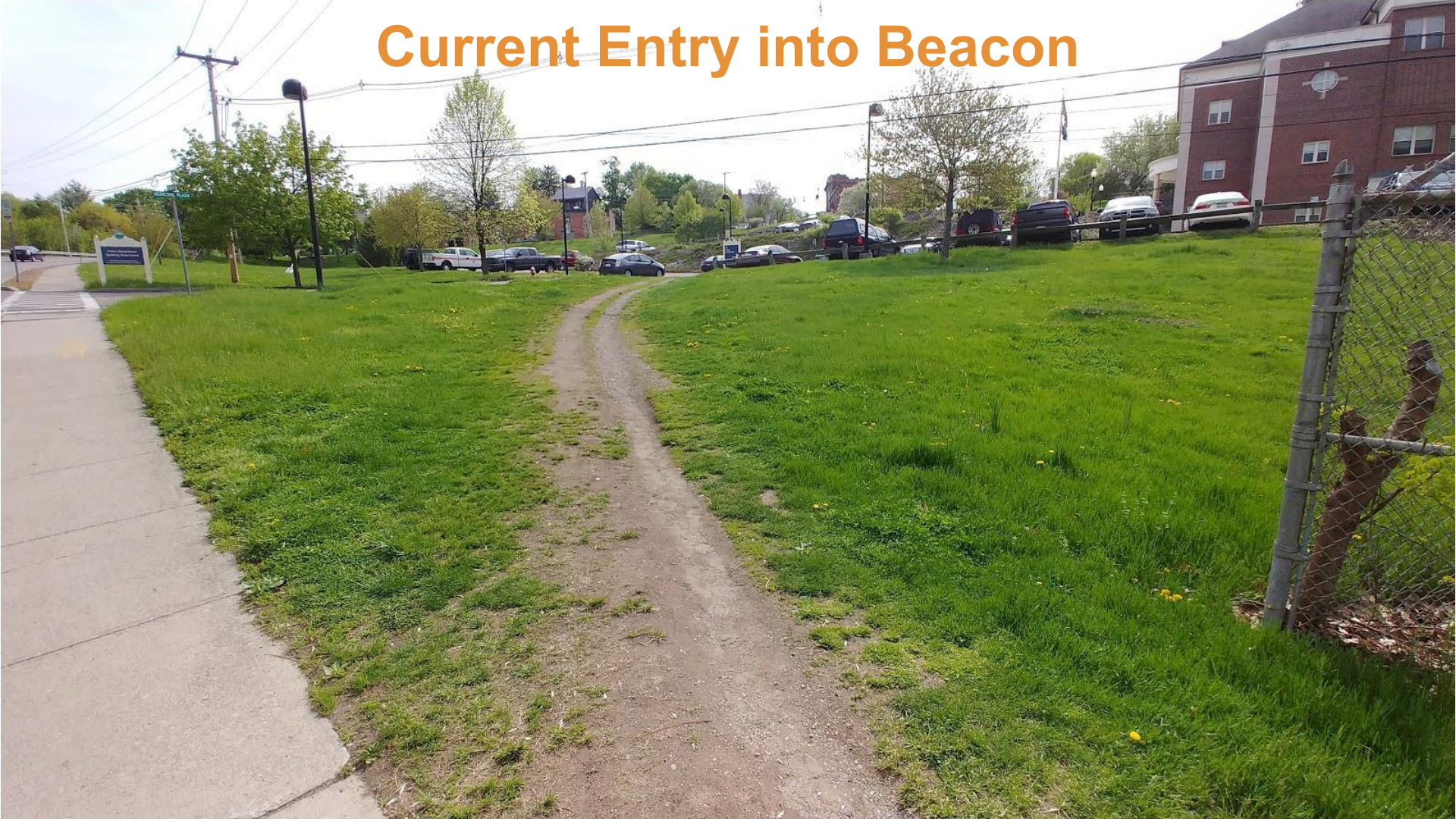








# Current Entry into Beacon





# Current Ascent to Main Street



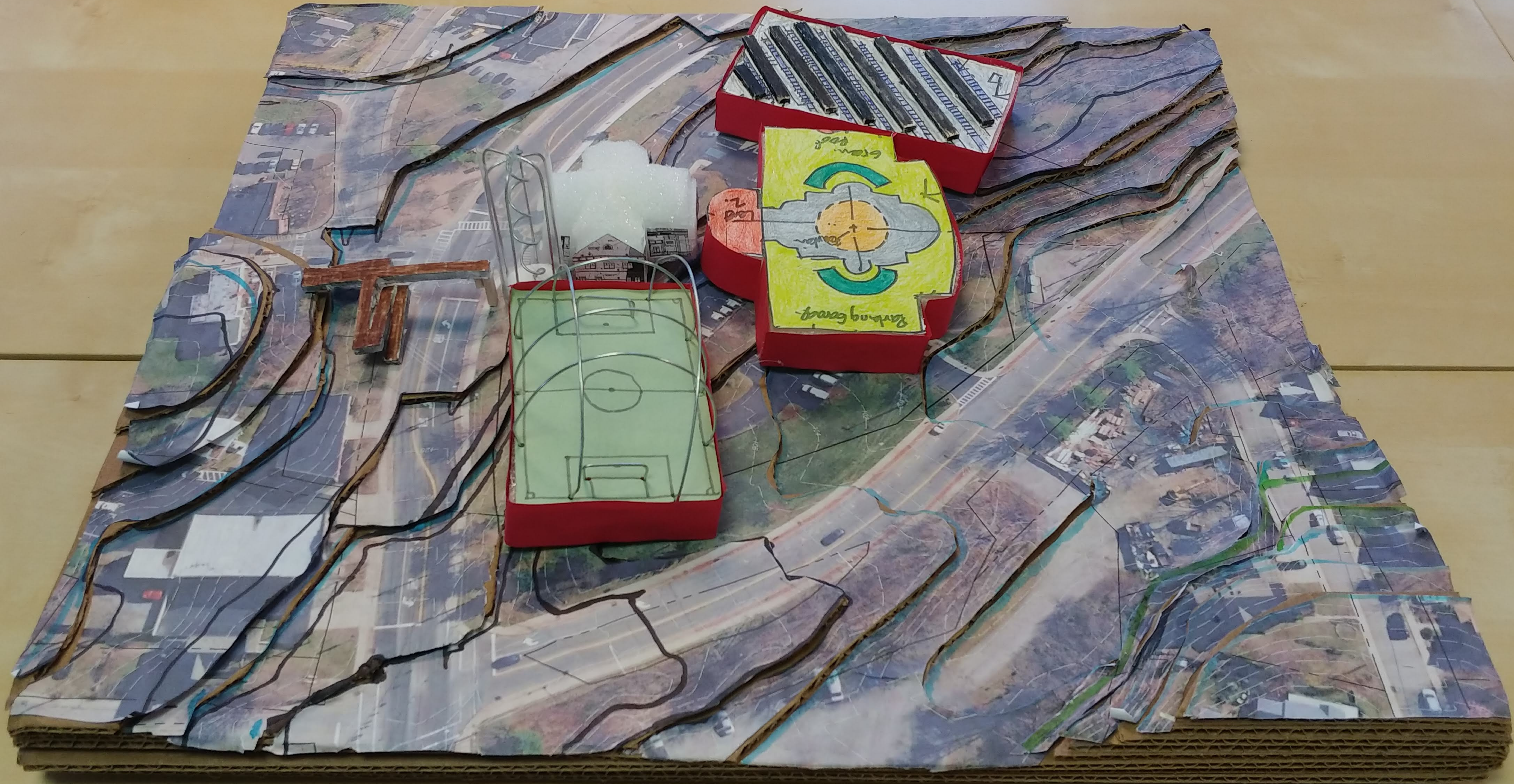
# Team Dutchess Mentors

Michael R. Berta	AIA	David Freeman	AIA
Larry Boudreau	RLA	Di W. George	Architect Intern
J.C. Calderón	AIA	James Rhodes	FAIA
George Cronk	PE	Antony Tseng	EIT
Dexter Douglass	Architect Intern	Stephen A. Whalen	RA





















# Visual Connections

Visual Connections

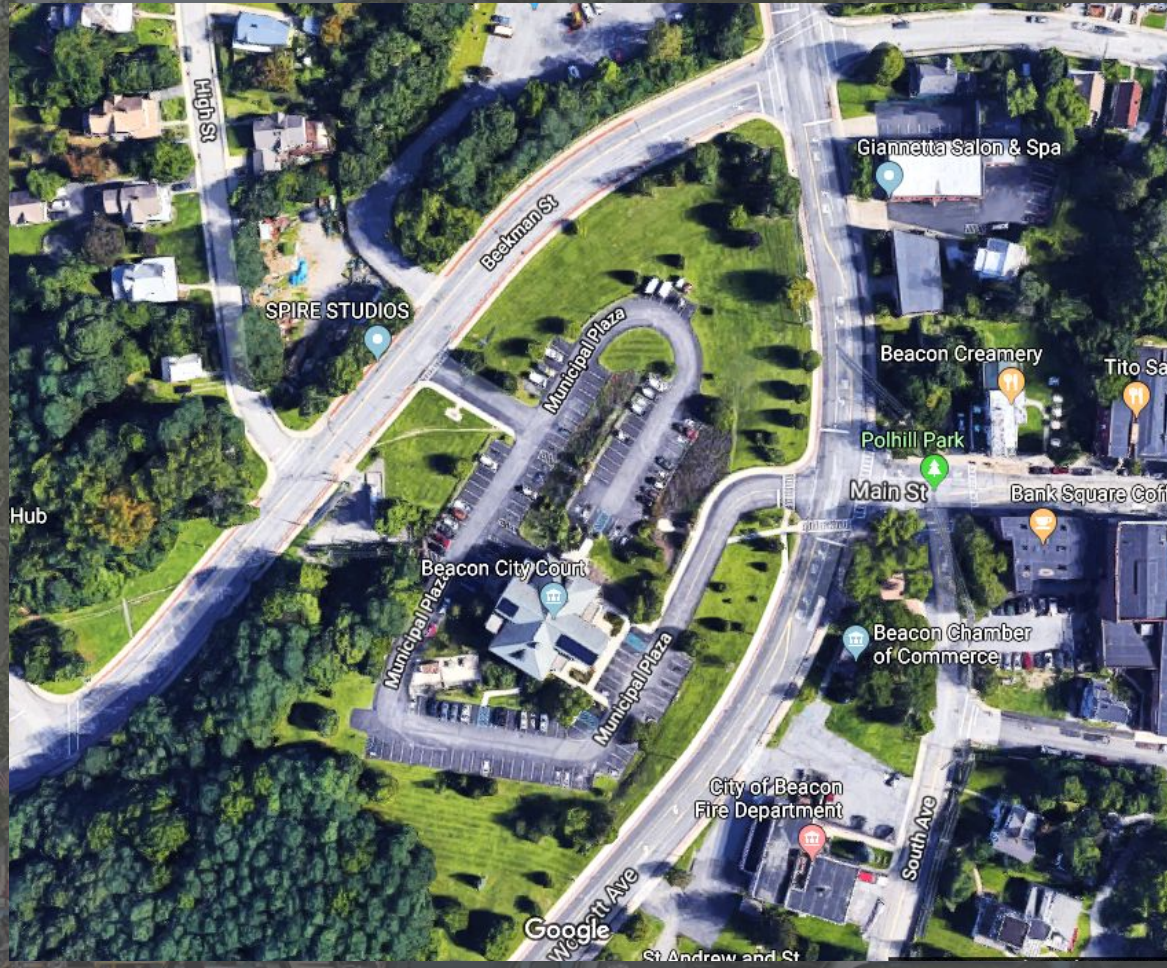
Team Tower

Daanyaal Haris / Nickino Haris / Russell Hecker



# Existing Conditions

- Current parking issue
- Room to expand









A background image of a street scene with trees and buildings. The image is slightly faded to allow the text to be read. It shows a street with parked cars, a bus, and a train in the distance. There are trees lining the street and buildings on the left side. A 'NO TURN ON RED' sign is visible on the right.

# Site Proposal

- City Hall moved northeast directly in line with Main Street
- Gym/athletic complex
  - Has own level of parking with athletic field on top
- Multiple opportunities to park
  - No parking is visible
  - Helps to clear up Main Street parking issue
  - One set of parking is covered by park, another by solar panels

- 
- A background image of a street scene with trees and buildings. The image is slightly faded to allow the text to be read. It shows a street with cars, a bus, and a train in the distance. There are trees and buildings on either side of the street. A 'NO TURN ON RED' sign is visible on the right.
- # Site Proposal
- City Hall moved northeast directly in line with Main Street
  - Gym/athletic complex
    - Has own level of parking with athletic field on top
  - Multiple opportunities to park
    - No parking is visible
    - Helps to clear up Main Street parking issue
    - One set of parking is covered by park, another by solar panels



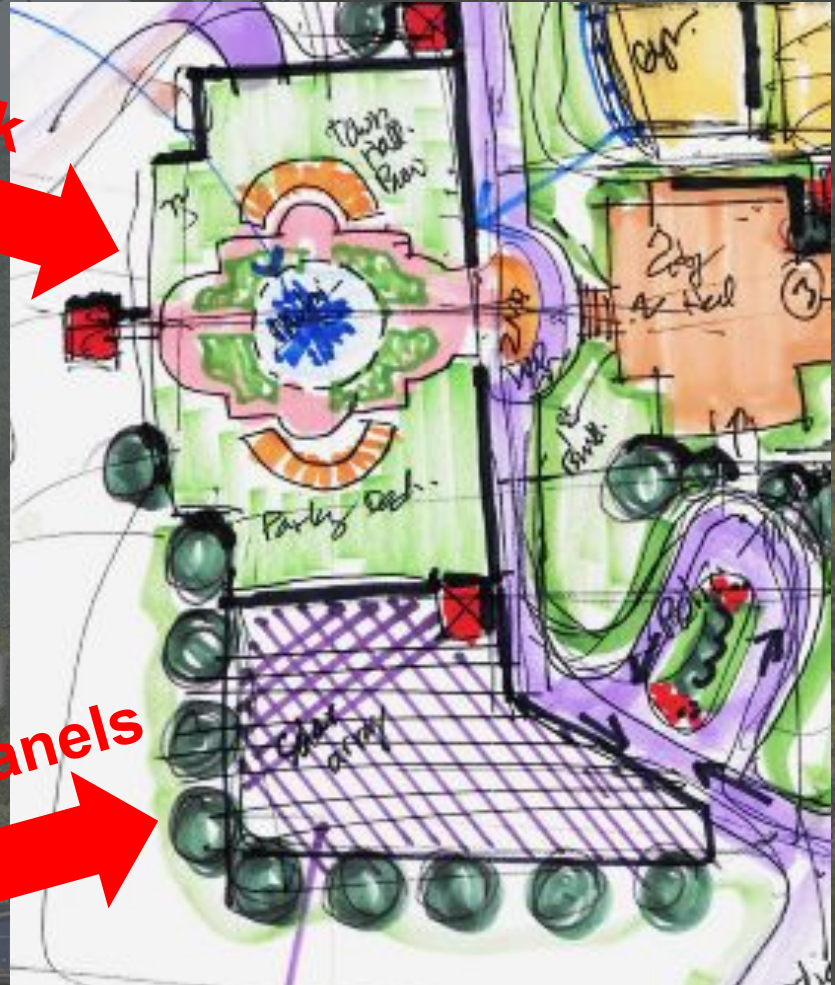


# PARKING

- The amount of cars that park on Main street is reduced by the addition of parking garages
- The location of the parking lot next to the gym makes it more accessible to the attendants
- Free parking

Solar Panels

Park





# Parking Garage Inspiration

## Culinary Institute of America


- One of our major aspects on the site is a garden type attraction that also serves as underground parking
- Inspired by the Culinary Institute of America




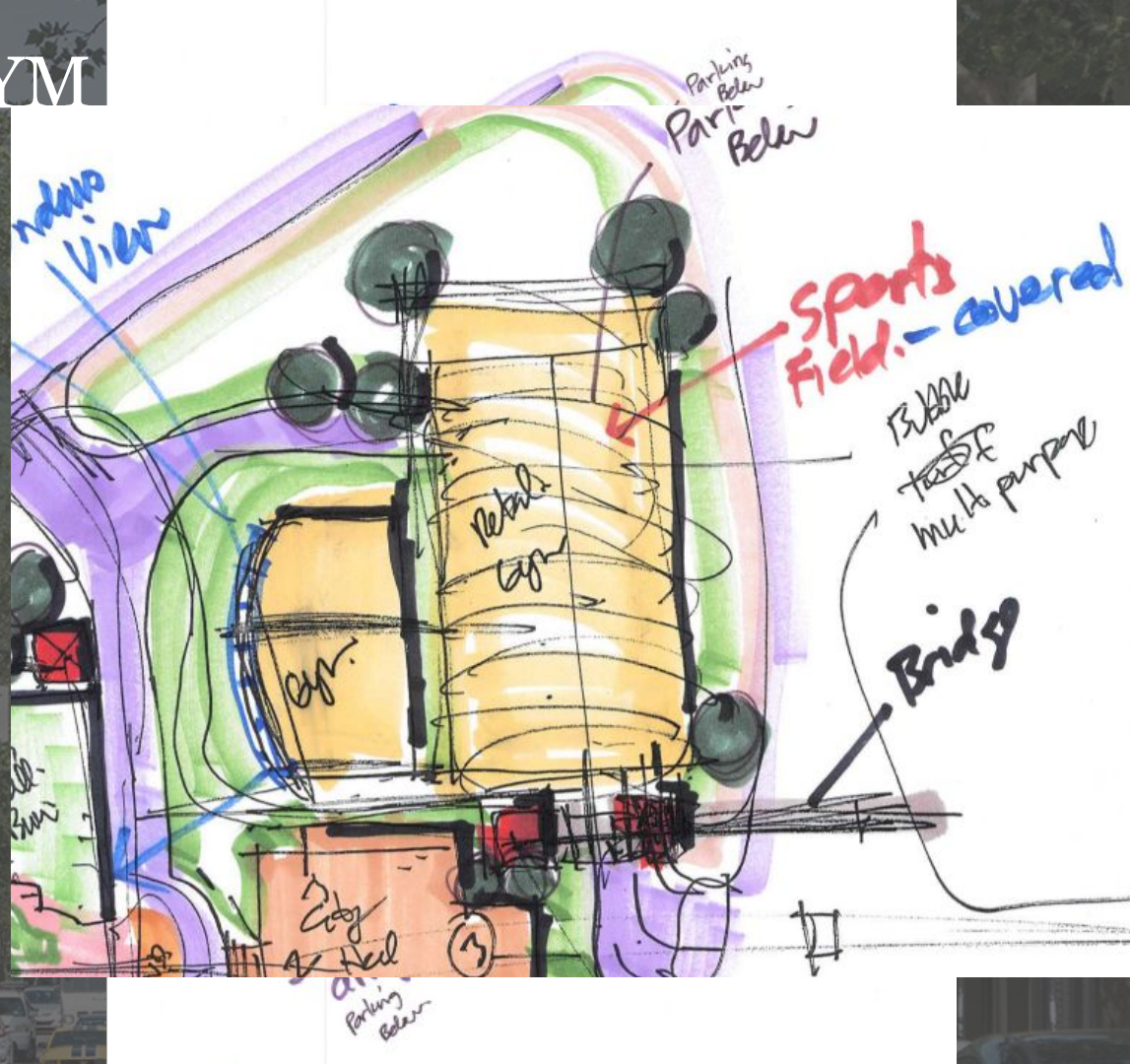


# ATHLETIC FIELD/GYM

- The athletic field/gym was added because of the fact there are currently not any gyms in Beacon; the nearest is in Fishkill.
- First floor of gym houses general workout equipment
- Second floor has concave windows which reveal sweeping view of river
- Athletic field has parking garage below



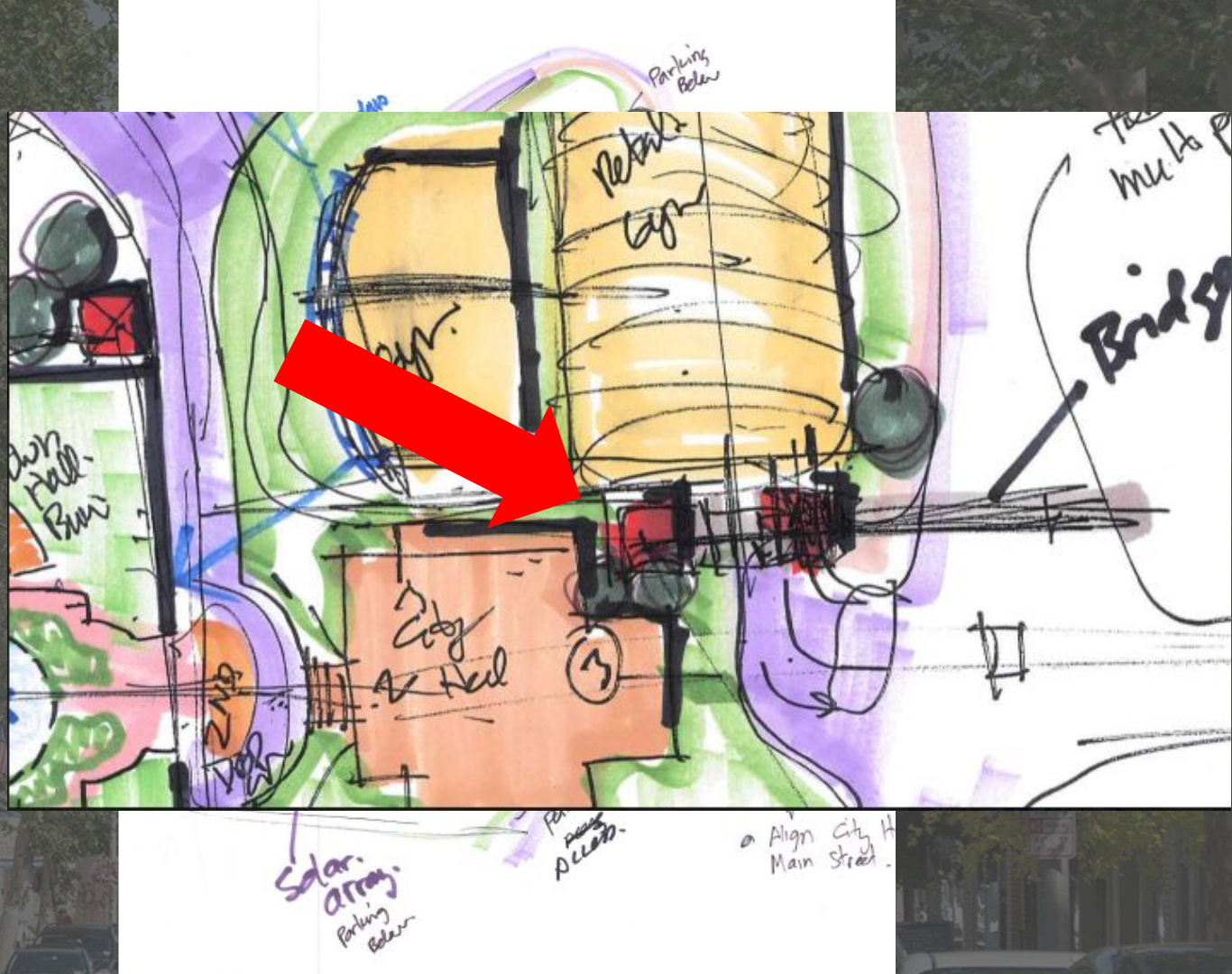
- # ATHLETIC FIELD/GYM
- The athletic field/gym was added because of the fact there are currently not any gyms in Beacon; the nearest is in Fishkill.
  - First floor of gym houses general workout equipment
  - Second floor has concave windows which reveal sweeping view of river
  - Athletic field has parking garage below
- 





# TOWER

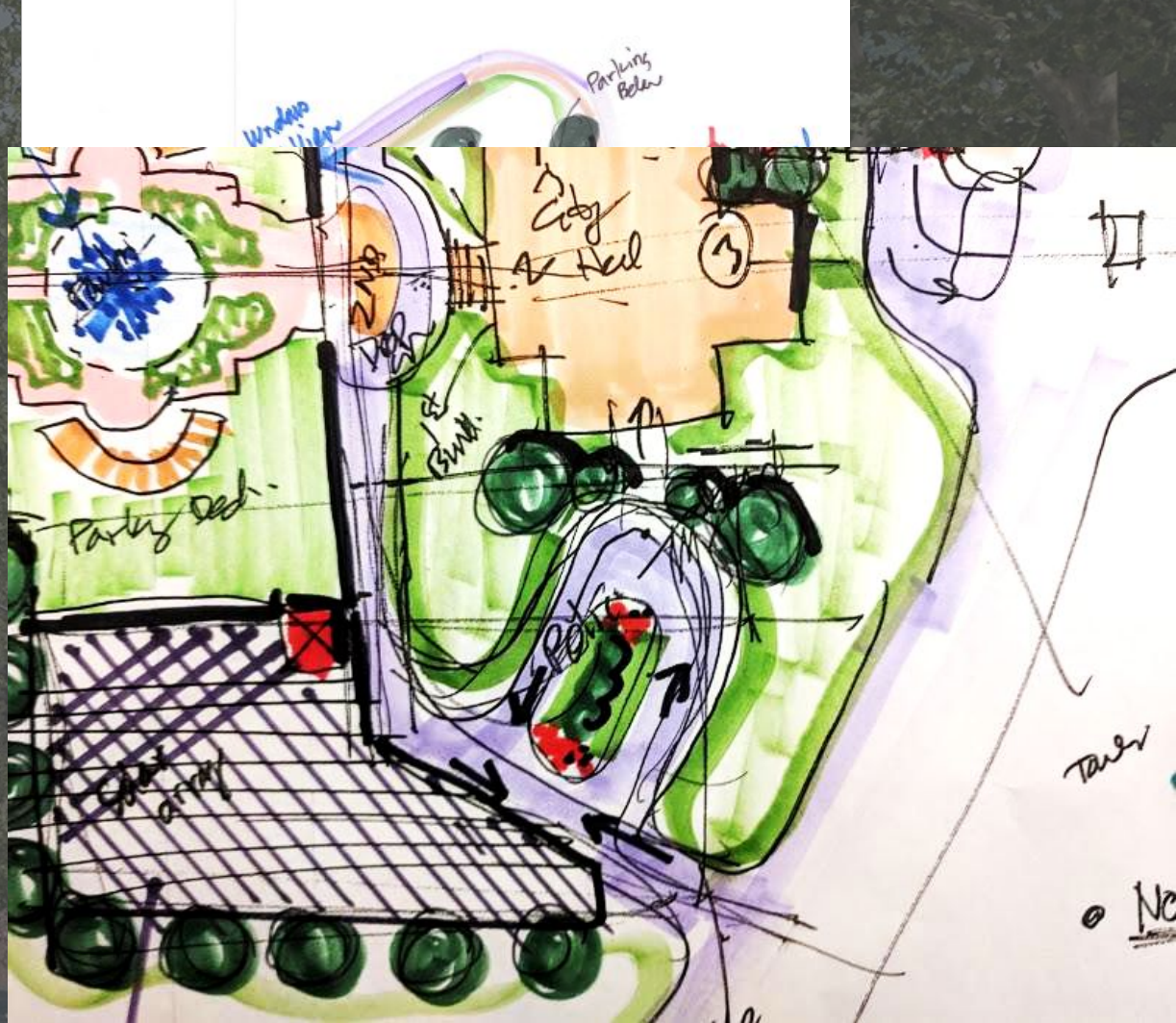
- Bridge across road provides direct access
- Elevator integrated within
- Three stories tall
- Displays 360° view of Beacon and surrounding area





# ROUNDAABOUT

- Functions as drop off area for second floor of police station





# In Summary...

- Gym and athletic complex are added further the entertainment opportunities in Beacon
- Parking facilities are included to help ease the parking conundrum
- Tower provides complete view of all Beacon has to offer
- City Hall is moved to a more logical place based on these changes







SmartSolutions



George Stojakovic Noah Montross Christian Farley

**Beacon Connections**

ACE Program Dutchess County



# Program Goals

**Objective: Improve quality of living and attract tourism in the city area**

- Pedestrian themed site for **various uses** including recreational and public access
- Establish meaningful **connection from Beacon Main Street to the Waterfront and train station**
- Have additional public accessible space including 120 spots in the proposed parking garage which would **improve the parking demand of the city**
- Add value to existing City Hall structure to enhance its functionality and overall appearance
- Entertainment and activities that are open to the public year around

Primary team functions

Management, Engineering, and Architectural roles contributed to ideas on project



---

## Concept idea

This map represents the current layout of the site in Beacon which we used to explore ideas to further develop our concept

The following slides reflect the proposal that our team generated as the most attractive approach of the area

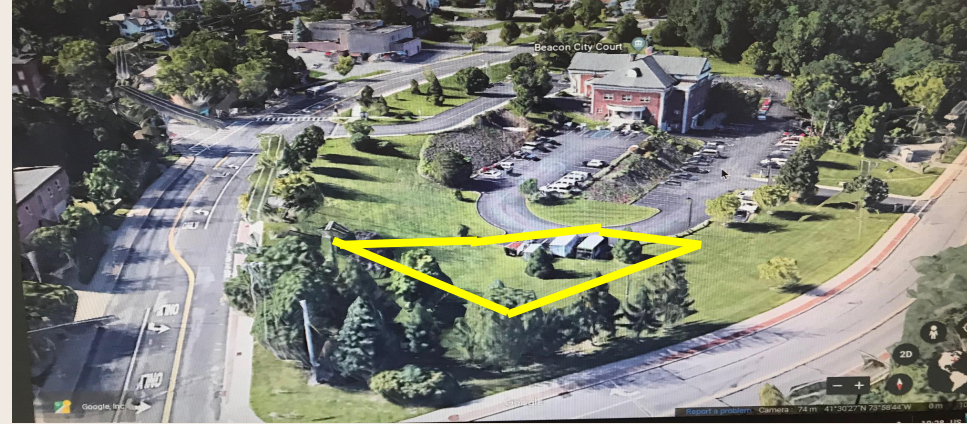




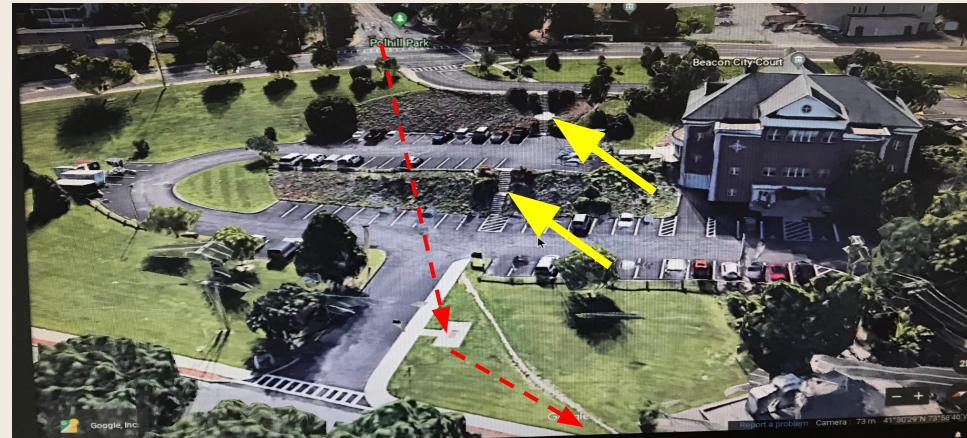
## Current Conditions of Site

- Unattractive pedestrian accessible area  
*-Poor walkway, connection*
- Steep elevation gradient  
*-Placement of certain project additions are crucial (amphitheater)*
- Lack of parking space
- Potential for enhanced developments
- Integration of Town Hall/ Police Station

Amphitheater arena and grade



Existing connection and stairway



# Site Plan Proposal





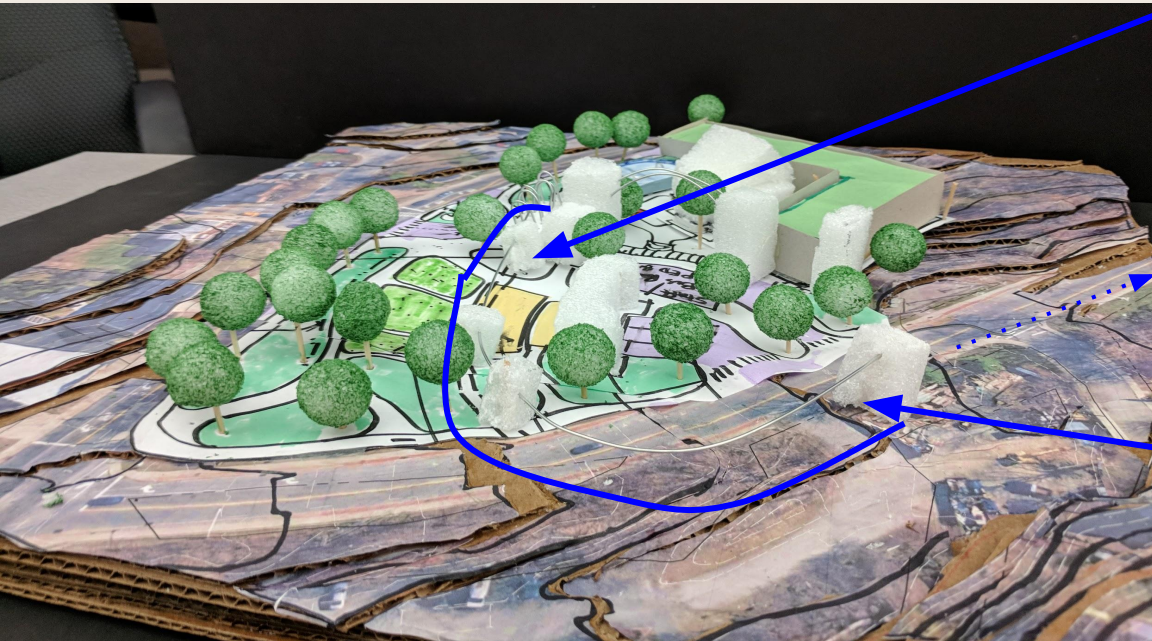
# 3 Primary Elements- Parking Garage/ Bridge



- The Parking deck would have **3 levels** with the natural gradient providing accessibility for *visitors, staff, police department, and handicapped*
- The first and second levels will have different entrances where it would benefit community and police **parking**
- The **bridge** and the **park (green roof)** on third level complements vibrant atmosphere  
*-would attract tourism to go to this symbolic place to get the picturesque riverfront view*



# 3 Primary Elements- Tram



- Inspired by the **JFK Airtrain**
- Visitors can travel directly from the **train station** to the **presented site** and cross to **Main Street**.
- The tram would *link to the parks* in the area and the *DIA art museum* in an incredible round trip of Beacon for a **strengthened connection**



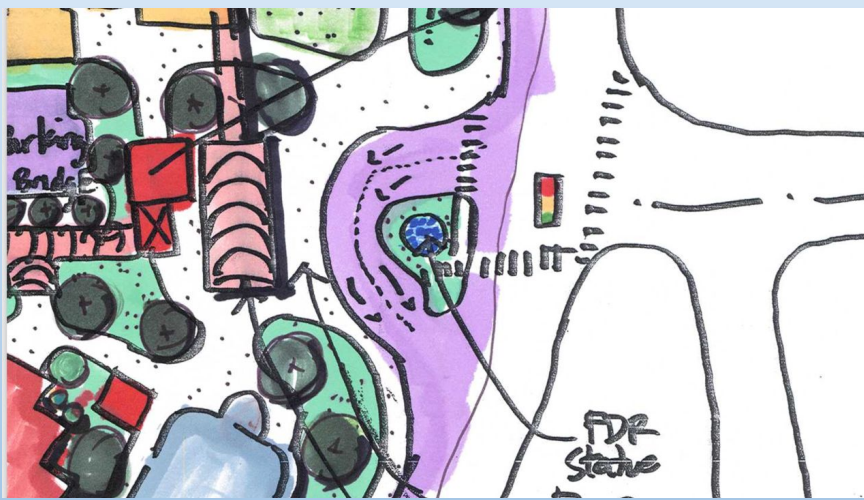
### 3 Primary Elements- Amphitheater

- The Bethel Woods Center for the Arts inspired the creation of the amphitheater (right)
- **Lawn seating, covered area** inside to protect against the weather, **performance stage**
- Concerts, public speaking, and other events held accessible for the hundreds of people attending
- Additional space for the haulers and trucks backstage for the equipment supplies for necessary accommodations



- Furthermore, the picture to the left illustrates general idea of the seating in the facility and overall layout  
*In general the amphitheater would be beneficial because not only would local residents want to come, but tourists around nation would be interested in joining these various events*





## Other Elements

This sketch contains a **drive through** for dropping off passengers efficiently. It would not disrupt the flow of traffic; and there would be a **statue** to represent a symbol of past Beacon history

The above portion further explores the path resembling **sidewalks**, more of the **amphitheater** section, and additional landscape features like **benches** and **restrooms**.



## Other Elements Continued

The *inspiration* is from the **Rockefeller Center**.

**Recreational area** purpose is it serves as a **multi seasonal** public space

- Winter Ice rink

- Summertime farmer's market/ art exhibit

Additionally **2 glass elevators** facing the Hudson River for greater landscape visibility

These elevators would serve to attract tourism and offer **incredible view**

**Gardens, trees, benches, sidewalks**, are aspects of scenic landscaping.





Our model would overall provide Visitors with unique experience regardless if they spend the whole day in the Beacon area or are just passing through to the station

*“In order to design buildings with a sensuous connection to life one must think in a way that goes far beyond form and construction” -Peter Zumthor*







# **The Vue Team Vista**

**Almaas Ali, Eric Ostrow, Autumn Lennon  
ACE Mentorship Beacon**



# Existing Conditions and Goals



- ❑ This area has very steep grades, making it difficult to do anything with the area.

## Goals:

1. Create either a visual or physical connection to the river from main street.
1. Implement facilities that everyone can use and enjoy.



Glass bridge  
over 9-D

The Vista

The Vue

Parking

Raised walkway  
over Beekman  
Street

Seating

Amphitheater

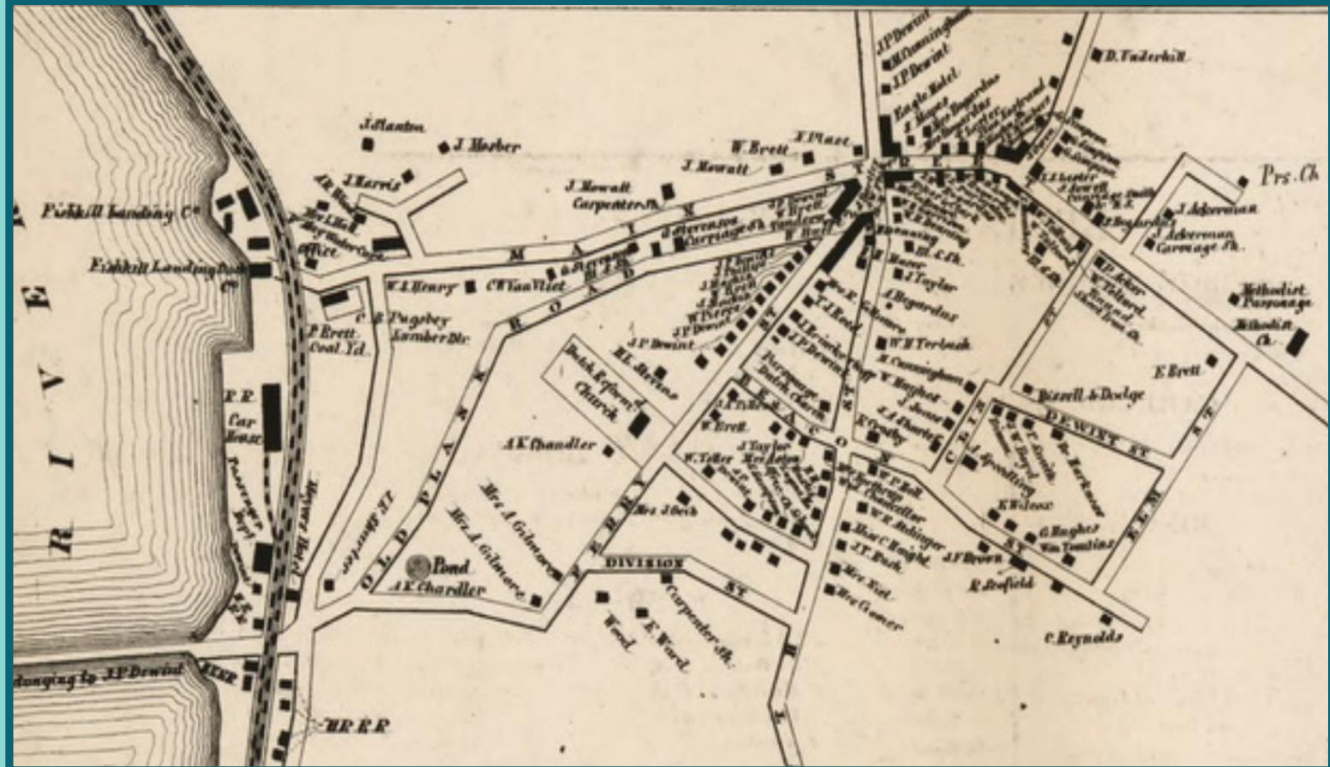




# History of this area-5 Corners

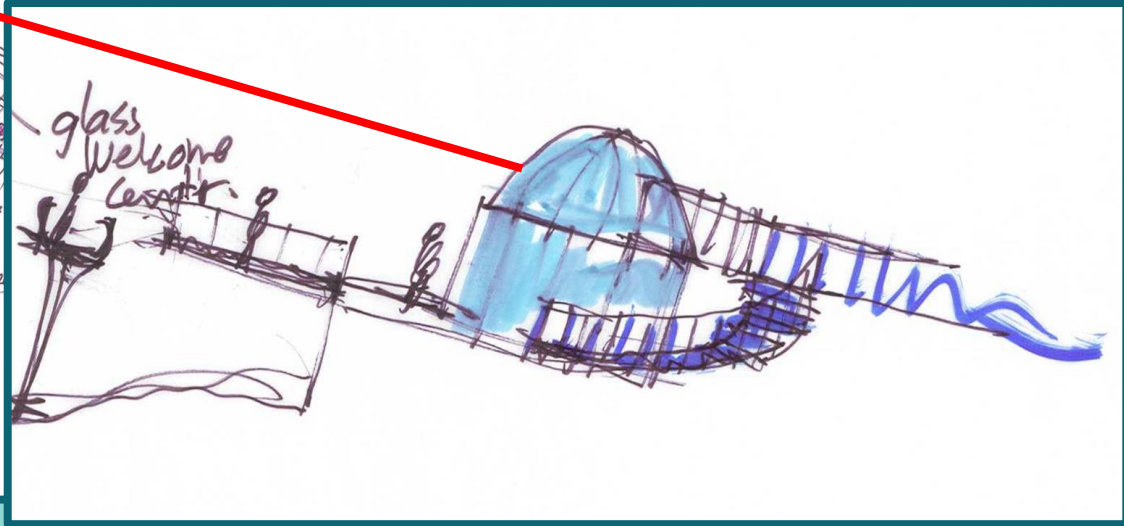
-Originally this area was a very special place, where FDR stopped and gave a speech.

-Our design makes this area into a special place once again, by creating “The Vista”





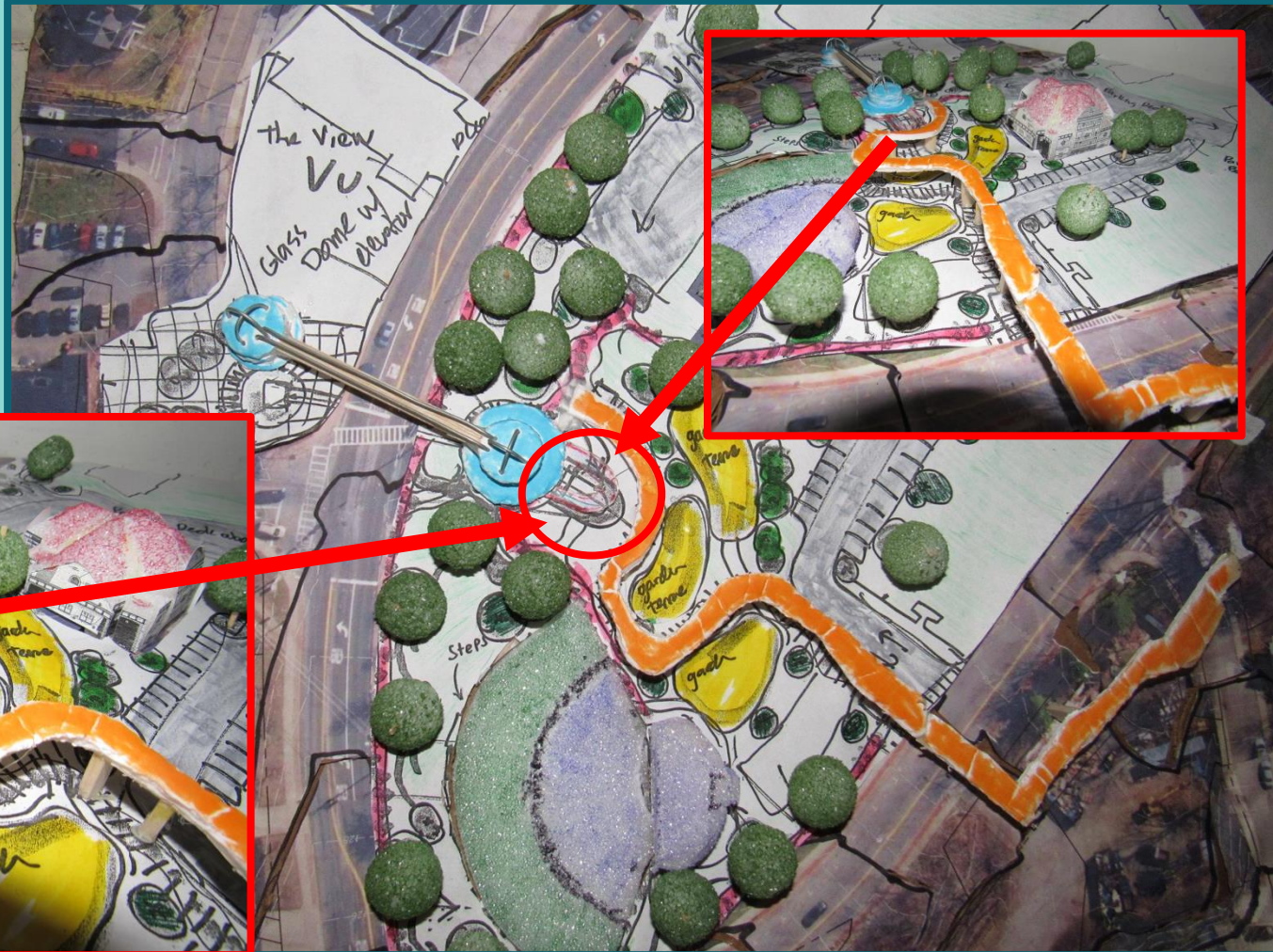
- main focal point
- a destination to get to





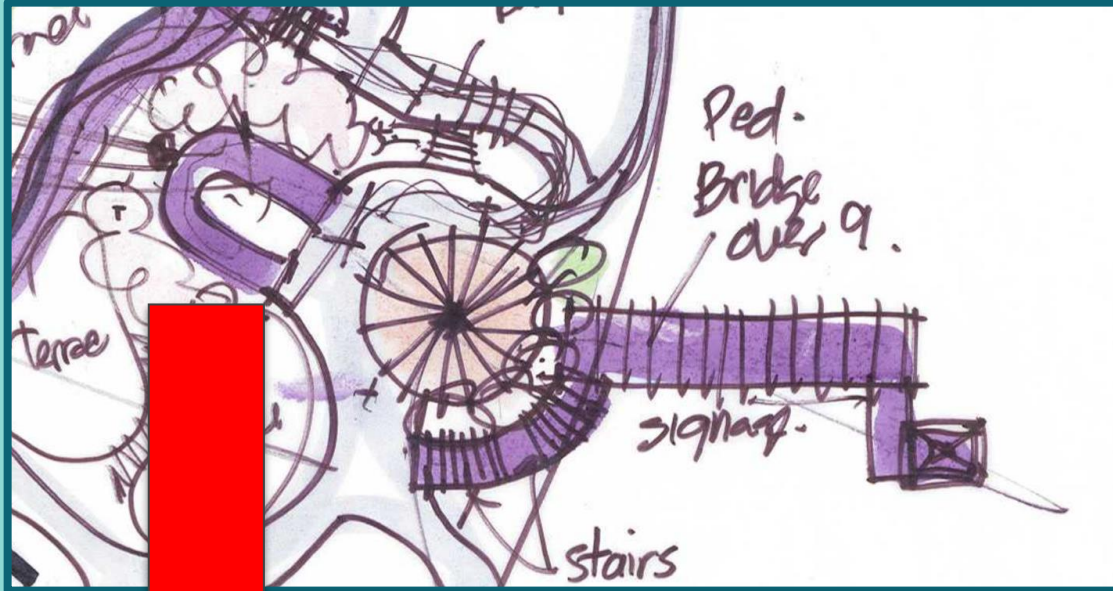
# The Vue

- makes visual connection to river
- provides elevated view of the scenery





# Inspiration/Precedent for “the Vue”



Grand Canyon



Our Plan









# In Conclusion

- ❑ Our plan's three focal points The Vue, The Vista and The Amphitheatre has taken the original site and made both visual and physical connections from Main Street to the Hudson River.
- ❑ Our plan also creates fun opportunities for people coming from the city and people that live in Beacon can enjoy.

**The View  
Team Vista  
Almaas Ali  
Eric Ostrow  
Autumn Lennon  
ACE Mentorship  
Beacon**