

Proposed South Avenue Bridge

Presented to:

Beacon City Council

February 26, 2018

This document was prepared for the New York State Department with funds provided under Title 11 of the Environmental Protection fund.



Original Bridge 1/07



This document was prepared for the New York State Department with funds provided under Title 11 of the Environmental Protection fund.

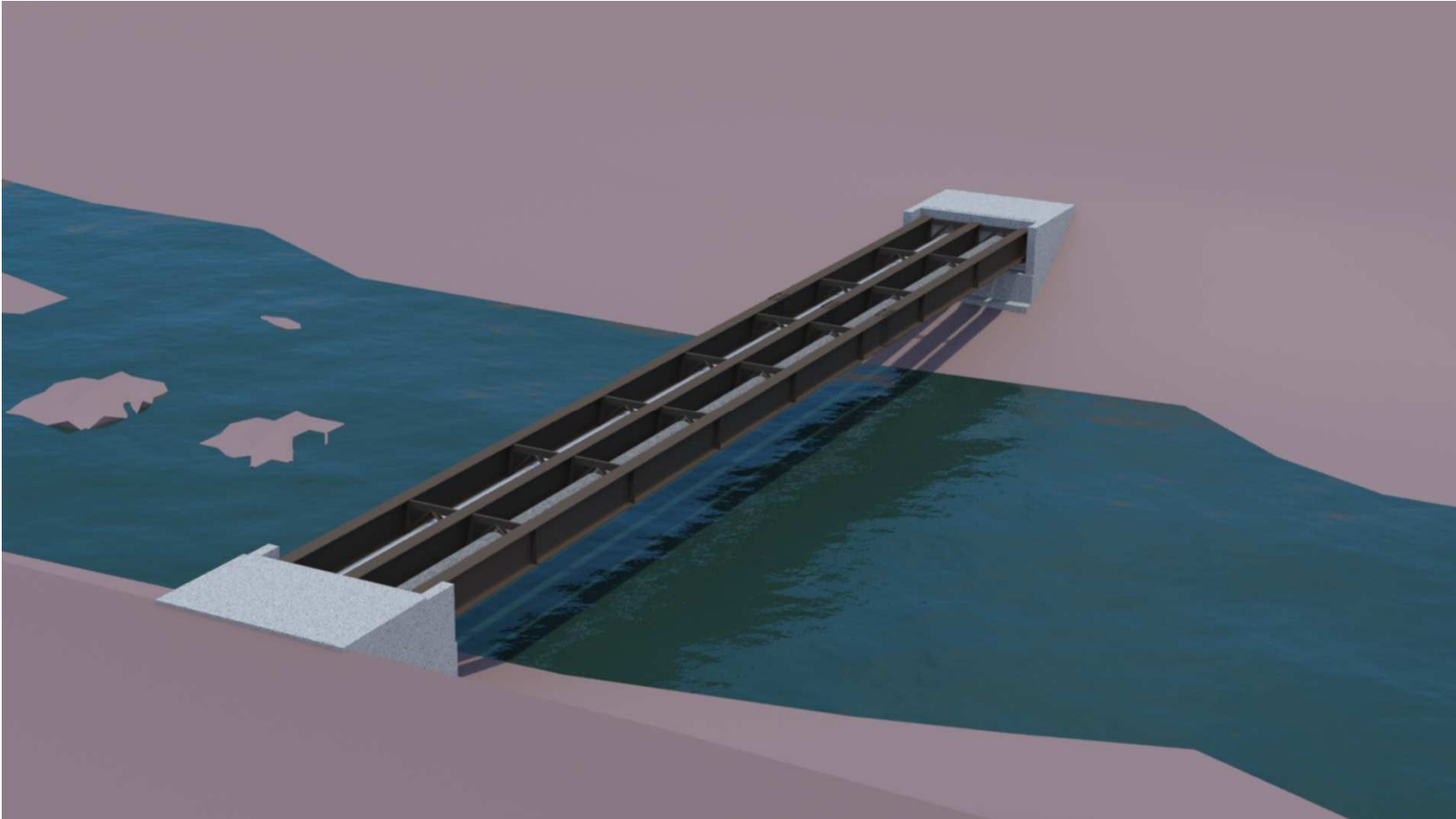
Present Configuration



This document was prepared for the New York State Department with funds provided under Title 11 of the Environmental Protection fund.



Present Configuration



This document was prepared for the New York State Department with funds provided under Title 11 of the Environmental Protection fund.

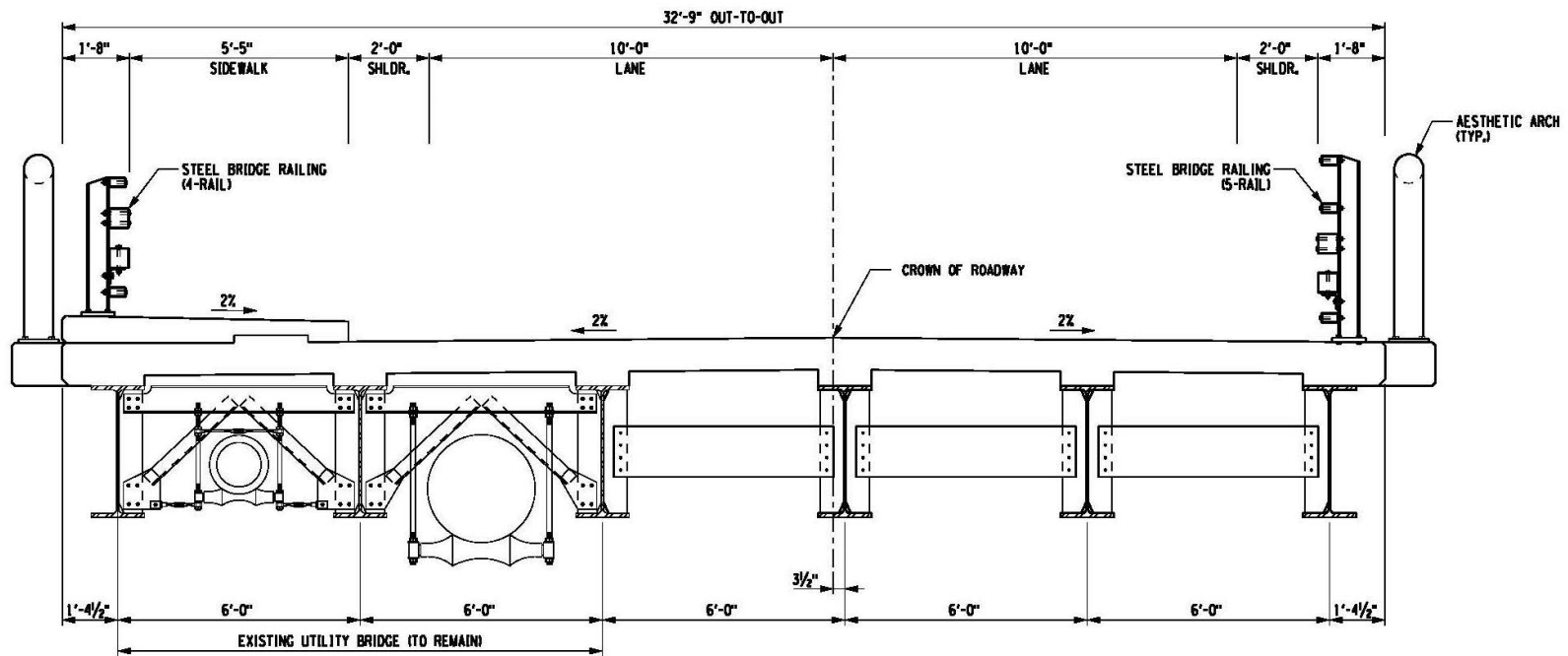
South Avenue Bridge

- Original Concept Design Parameters
 - Two Lane Bridge
 - Pedestrian Sidewalk
 - Bicycles to Share Roadway
 - South Avenue is a Designated Scenic Road
 - 10' lanes
 - 2' shoulders
 - Urban Street Design Speed (20-30 mph)

This document was prepared for the New York State Department with funds provided under Title 11 of the Environmental Protection fund.



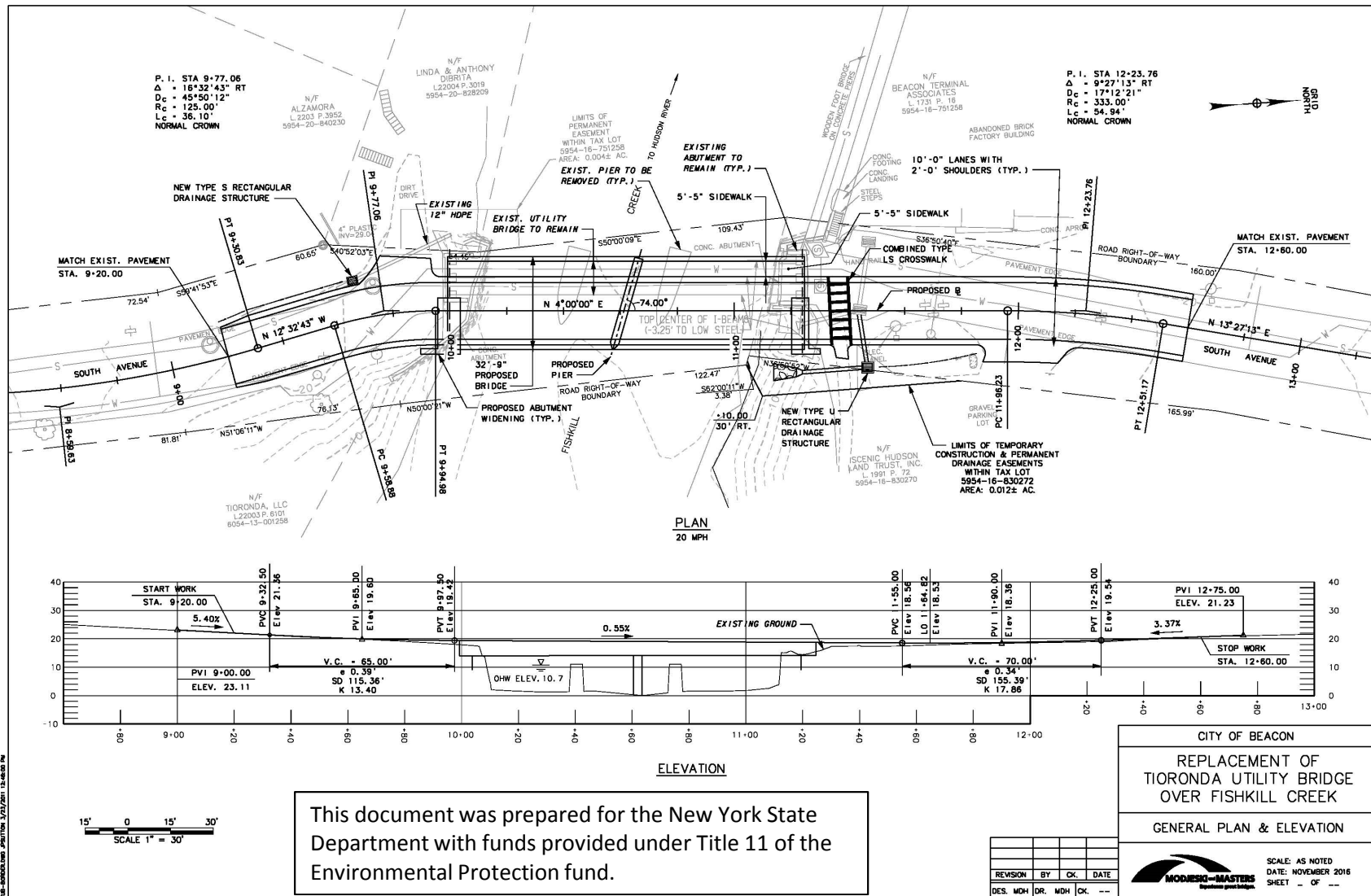
Original Proposal (Section)



TYPICAL SECTION
LOOKING AHEAD STATION
SCALE 1/4" = 1'-0"

This document was prepared for the New York State Department with funds provided under Title 11 of the Environmental Protection fund.

Original Proposal (Plan)

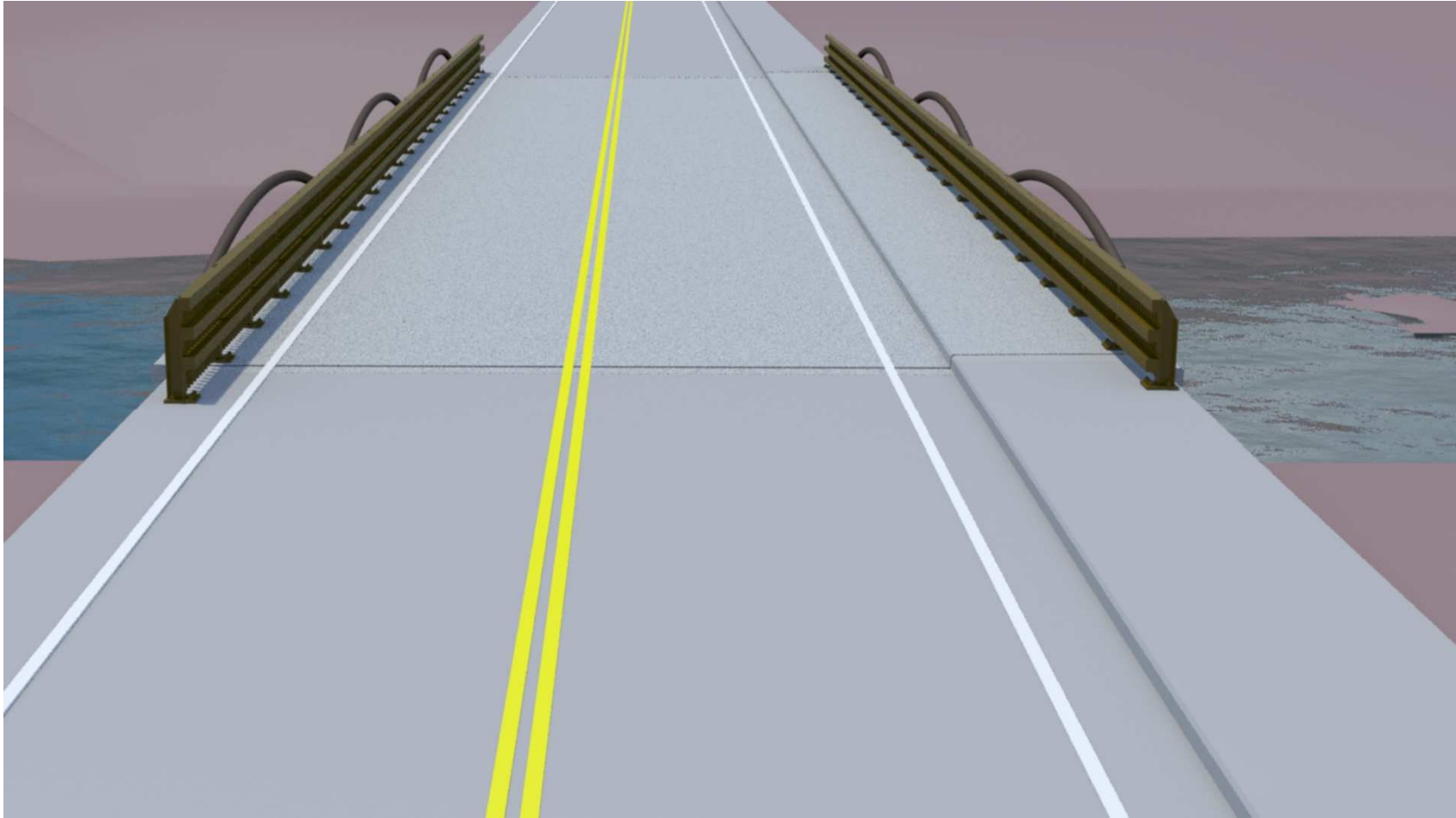


Original Proposal (Visualization)



This document was prepared for the New York State Department with funds provided under Title 11 of the Environmental Protection fund.

Original Proposal (Visualization)



This document was prepared for the New York State Department with funds provided under Title 11 of the Environmental Protection fund.

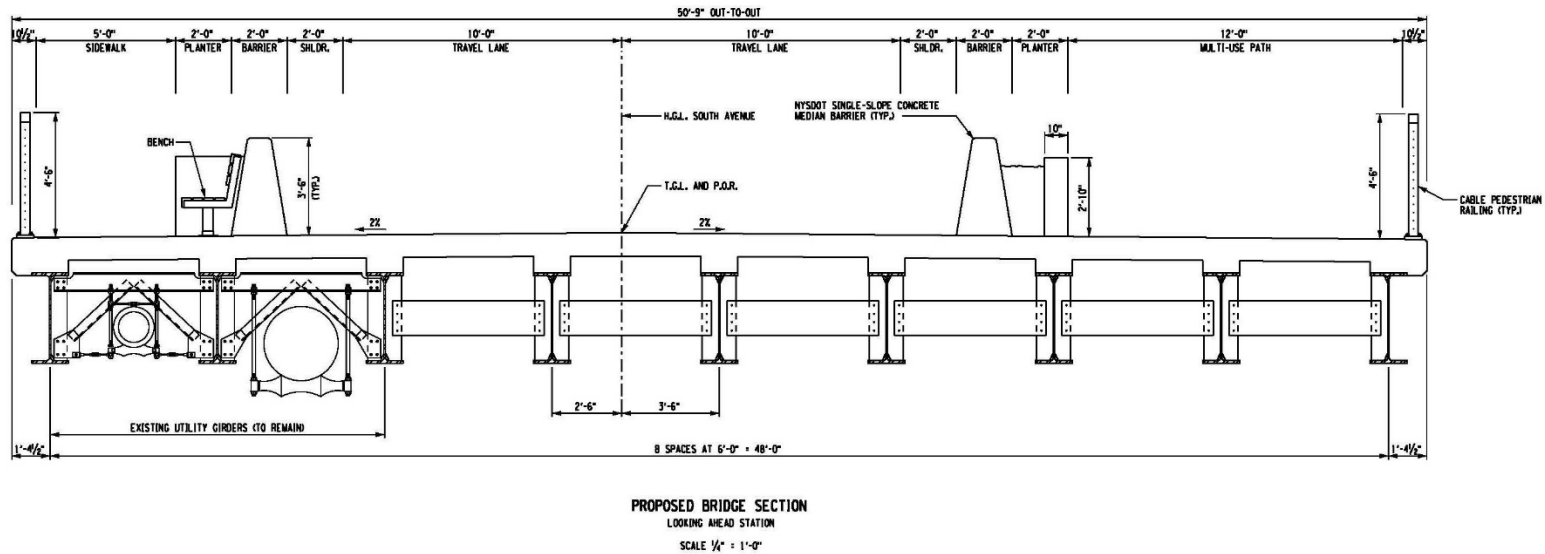


Alternative




This document was prepared for the New York State Department with funds provided under Title 11 of the Environmental Protection fund.

Second Iteration (Section)

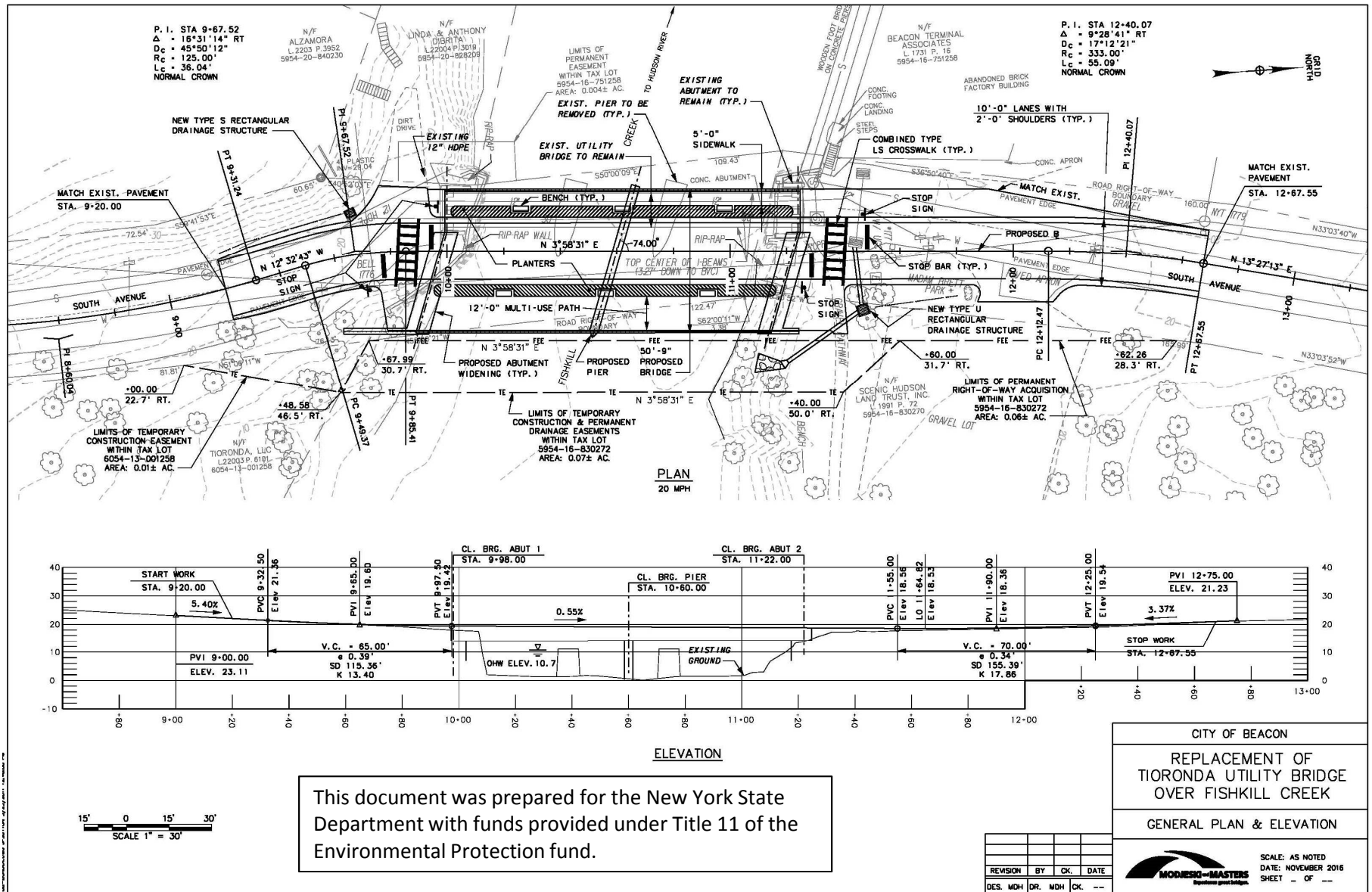


This document was prepared for the New York State Department with funds provided under Title 11 of the Environmental Protection fund.

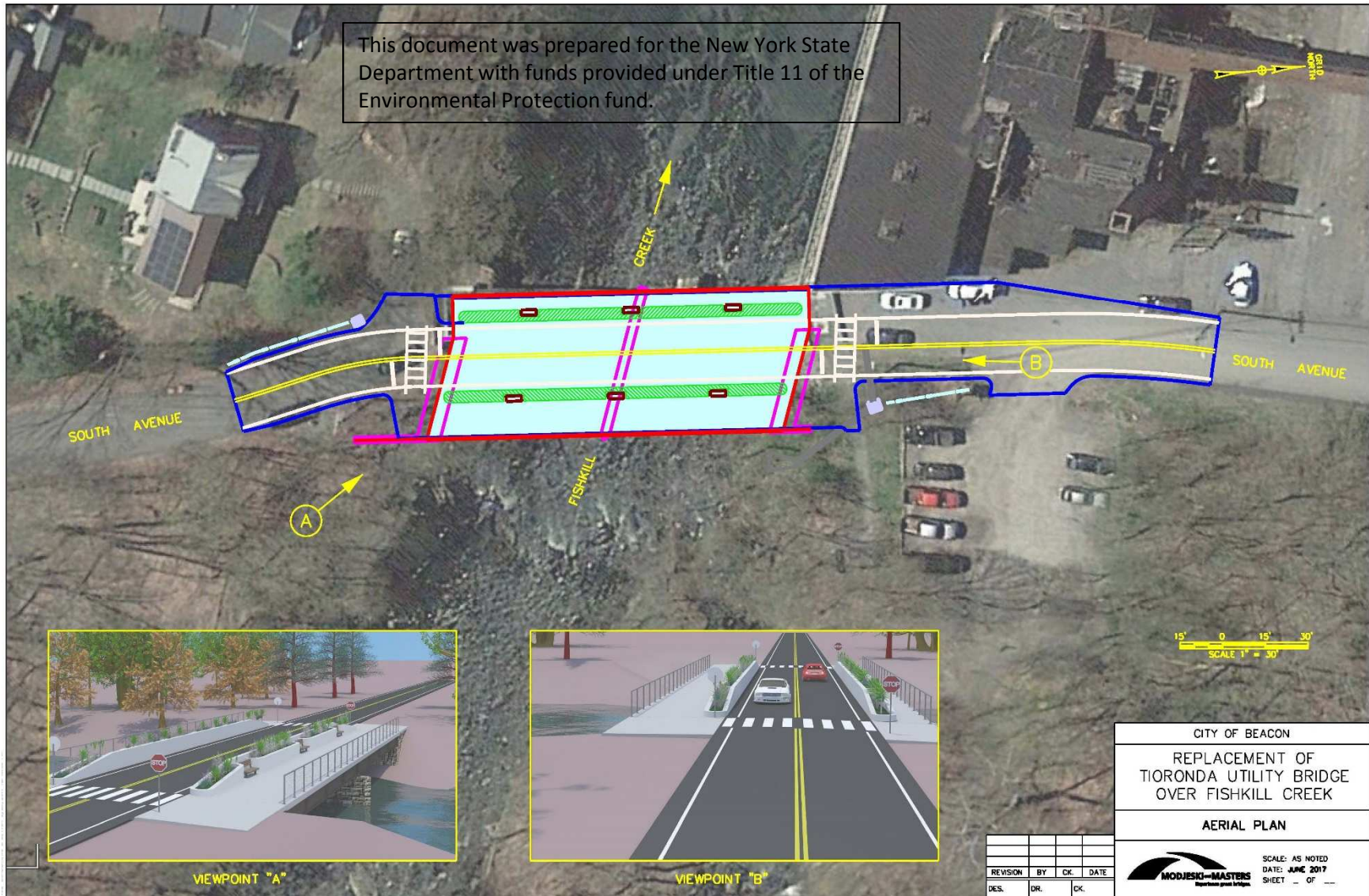
REVISION	BY	CK	DATE
DES.	DR.	CK.	

CITY OF BEACON
REPLACEMENT OF SOUTH AVENUE BRIDGE OVER FISHKILL CREEK
TYPICAL SECTION - ALT. 5
 SCALE: AS NOTED DATE: APRIL 2017 SHEET - OF -

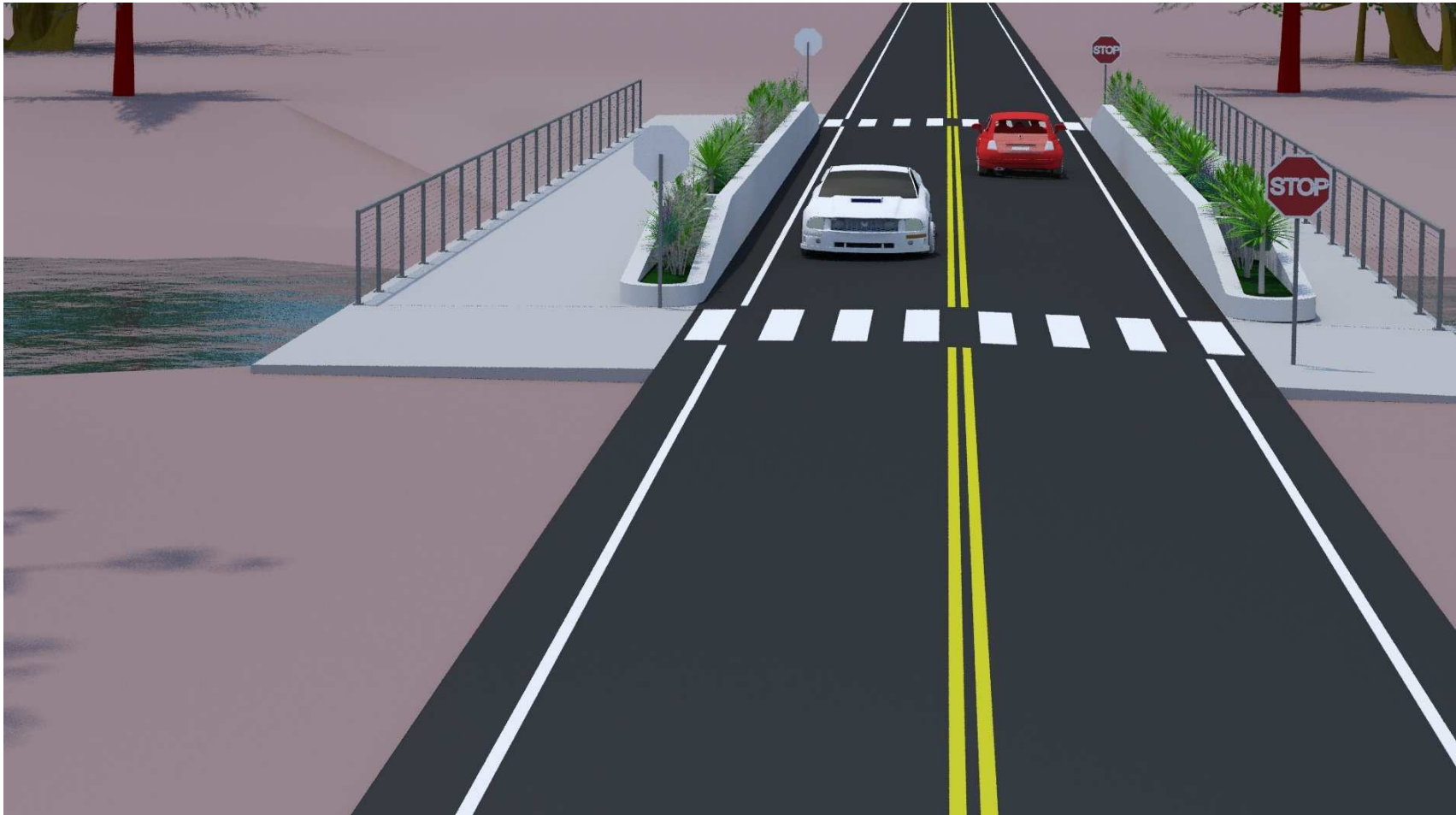
Second Iteration (Plan View)



Second Iteration (Plan View)



Second Iteration (Visualization)



This document was prepared for the New York State Department with funds provided under Title 11 of the Environmental Protection fund.

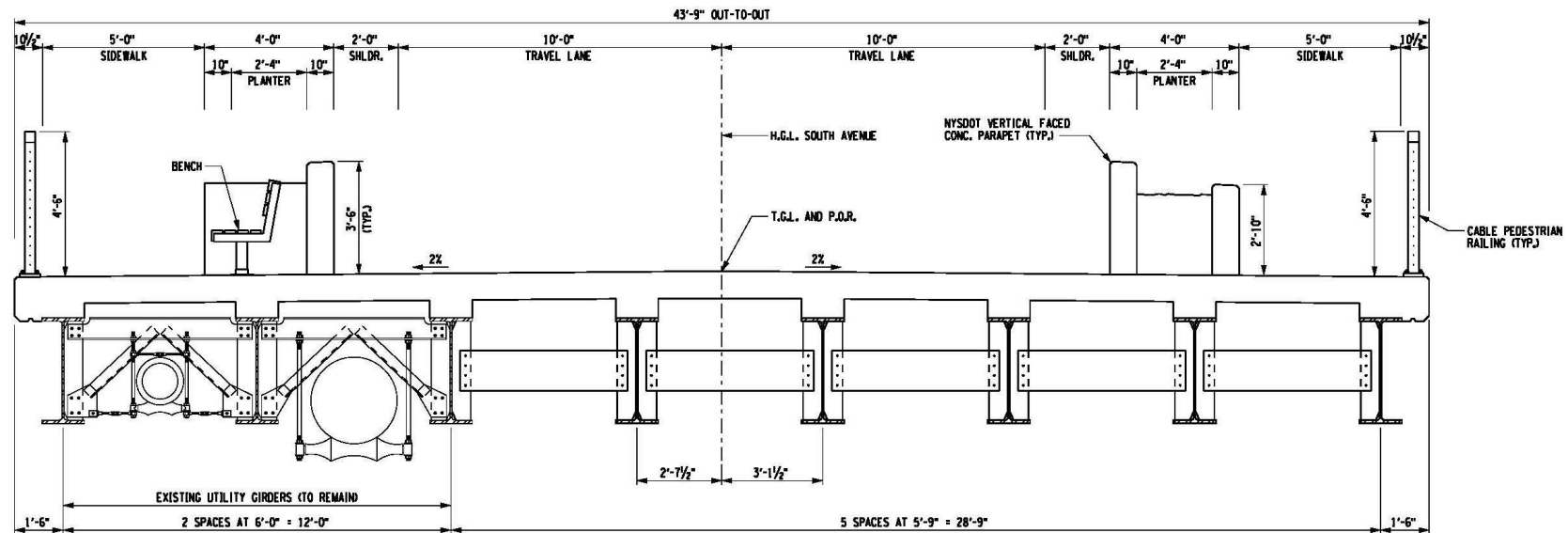
Second Iteration (Visualization)



This document was prepared for the New York State Department with funds provided under Title 11 of the Environmental Protection fund.



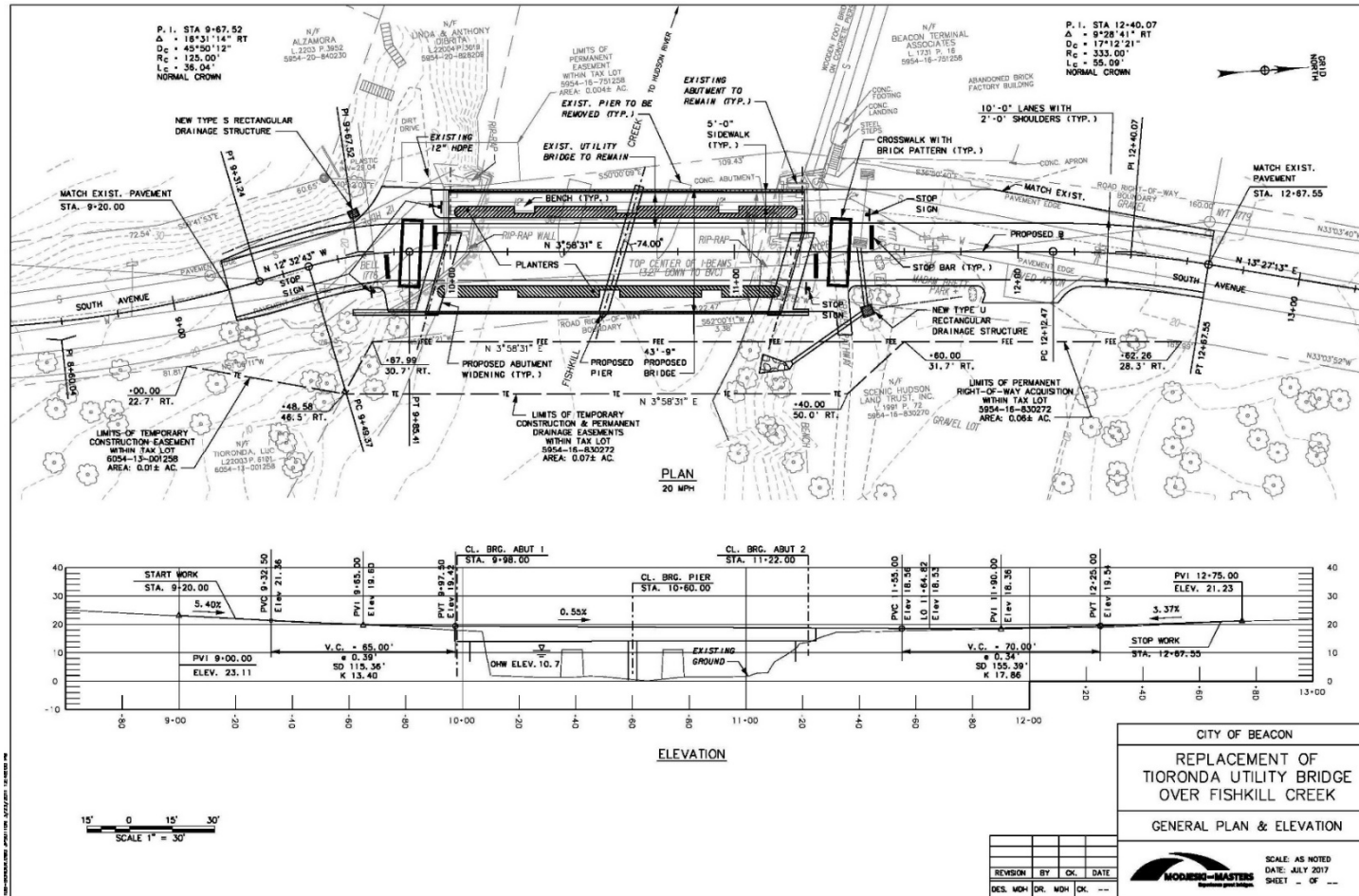
7-31-17 Iteration (Section)



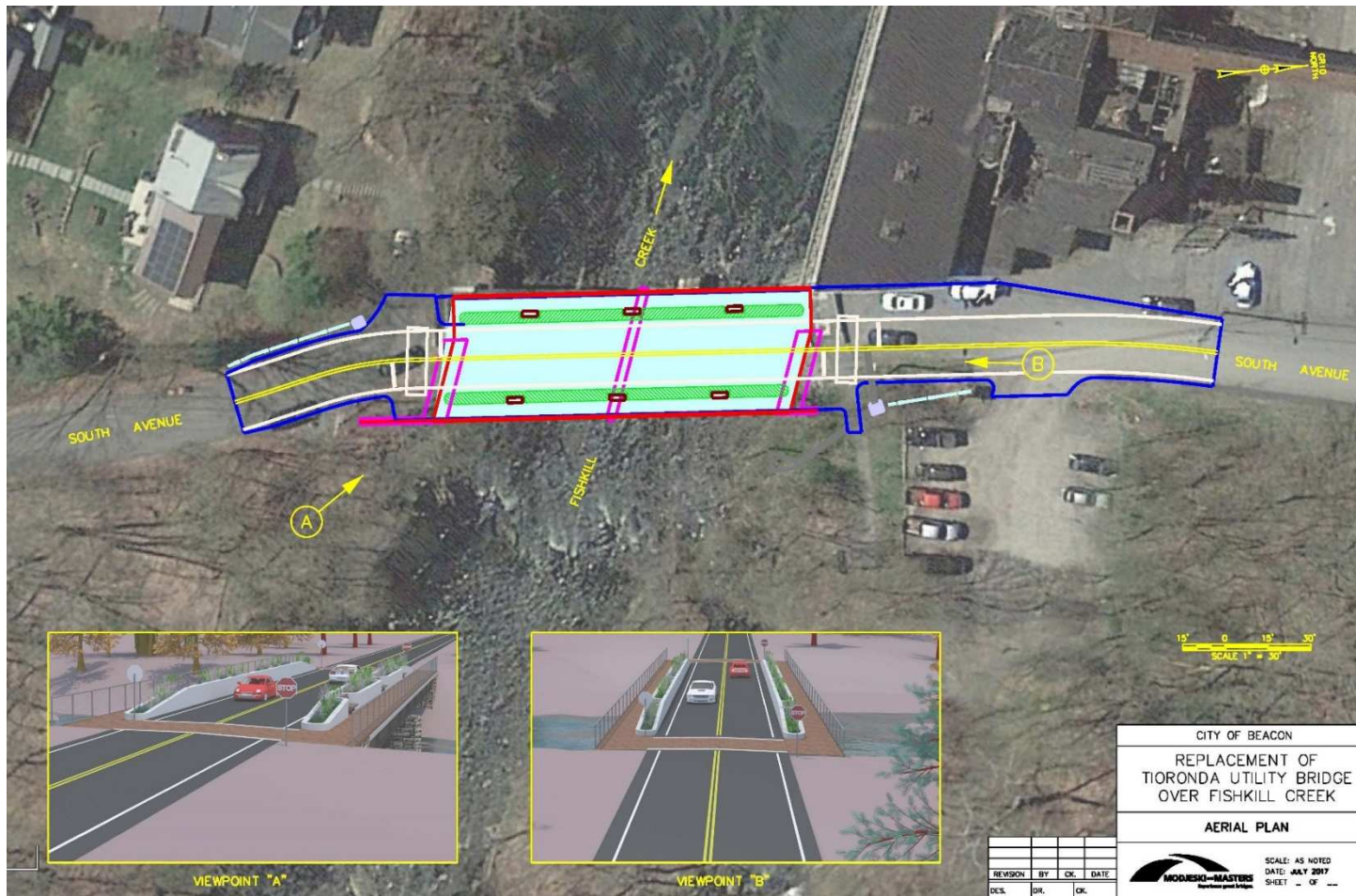
PROPOSED BRIDGE SECTION
LOOKING AHEAD STATION
SCALE 1/4" = 1'-0"

This document was prepared for the New York State Department with funds provided under Title 11 of the Environmental Protection fund.

7-31-17 Iteration (Plan View)



7-31-17 Iteration (Aerial)



This document was prepared for the New York State Department with funds provided under Title 11 of the Environmental Protection fund.

7-31-17 Iteration (Visualization)



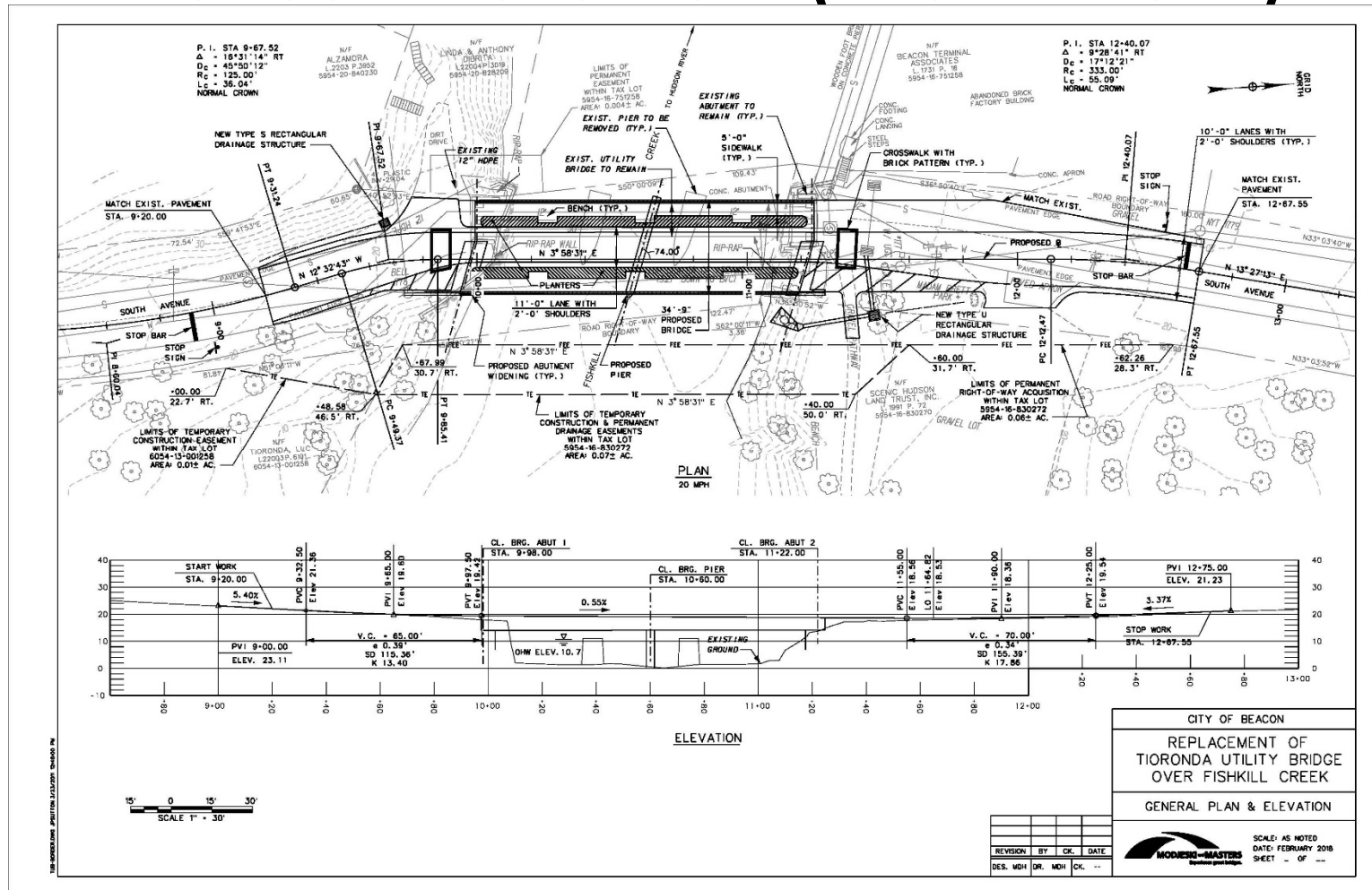
This document was prepared for the New York State Department with funds provided under Title 11 of the Environmental Protection fund.

7-31-17 Iteration (Visualization)

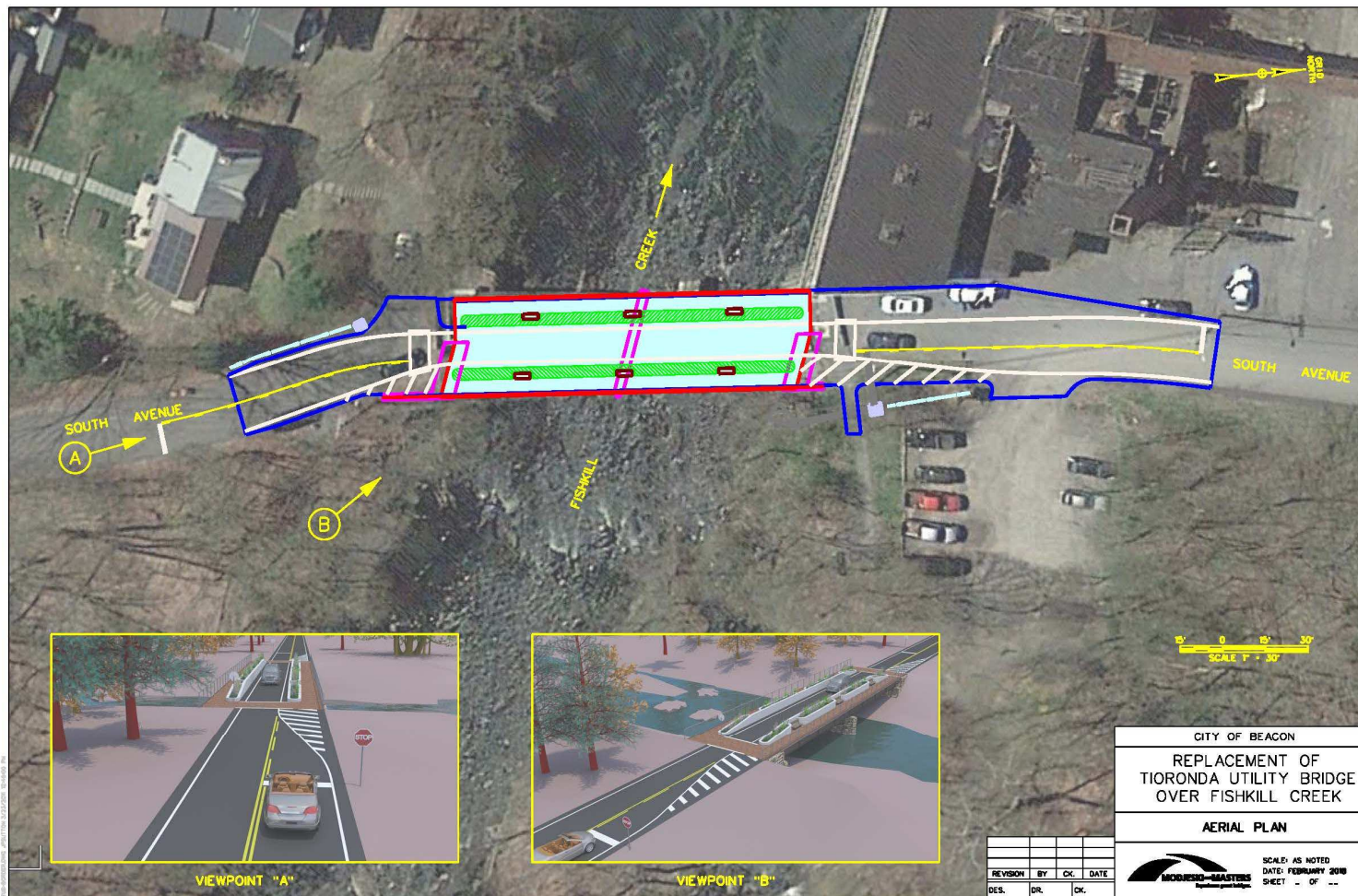


This document was prepared for the New York State Department with funds provided under Title 11 of the Environmental Protection fund.

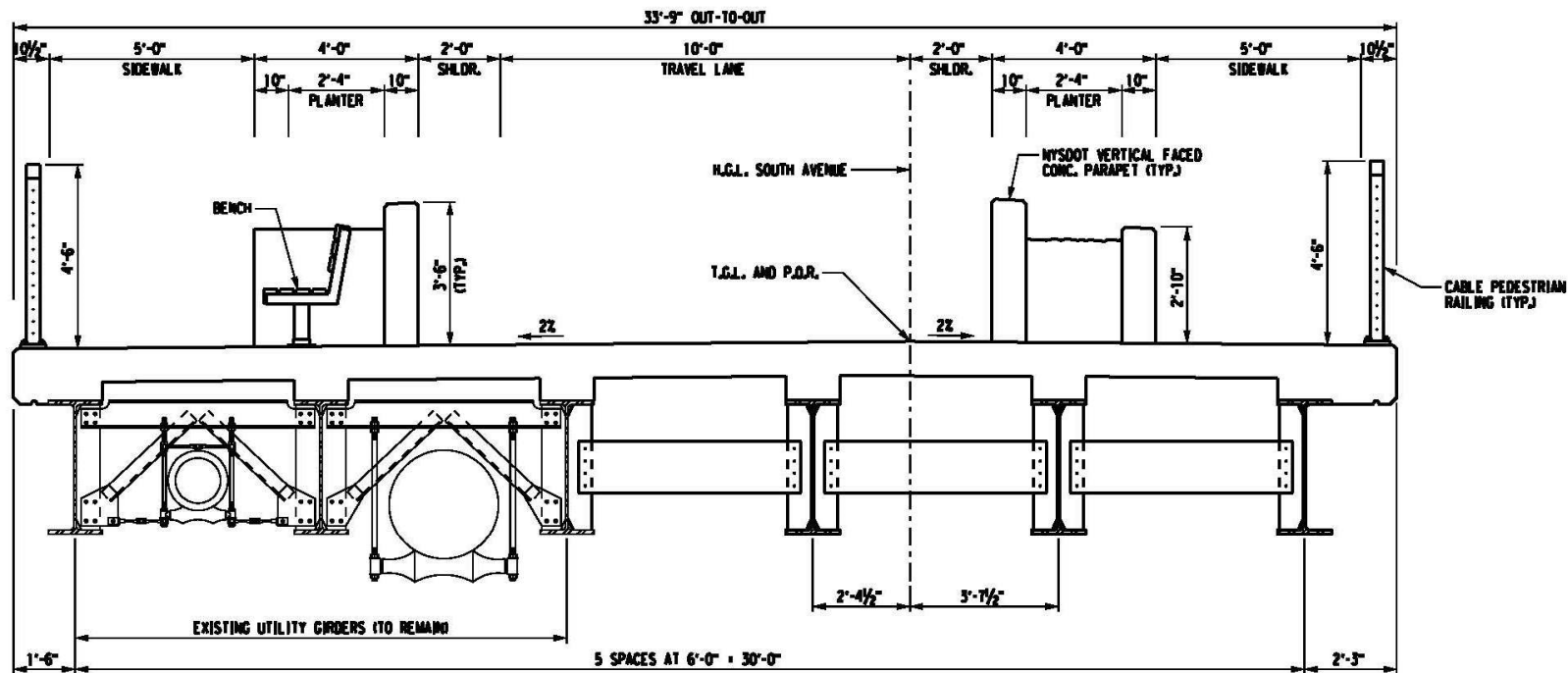
Latest Iteration (Plan View)



Latest Iteration (Aerial)



Latest Iteration (Visualization)

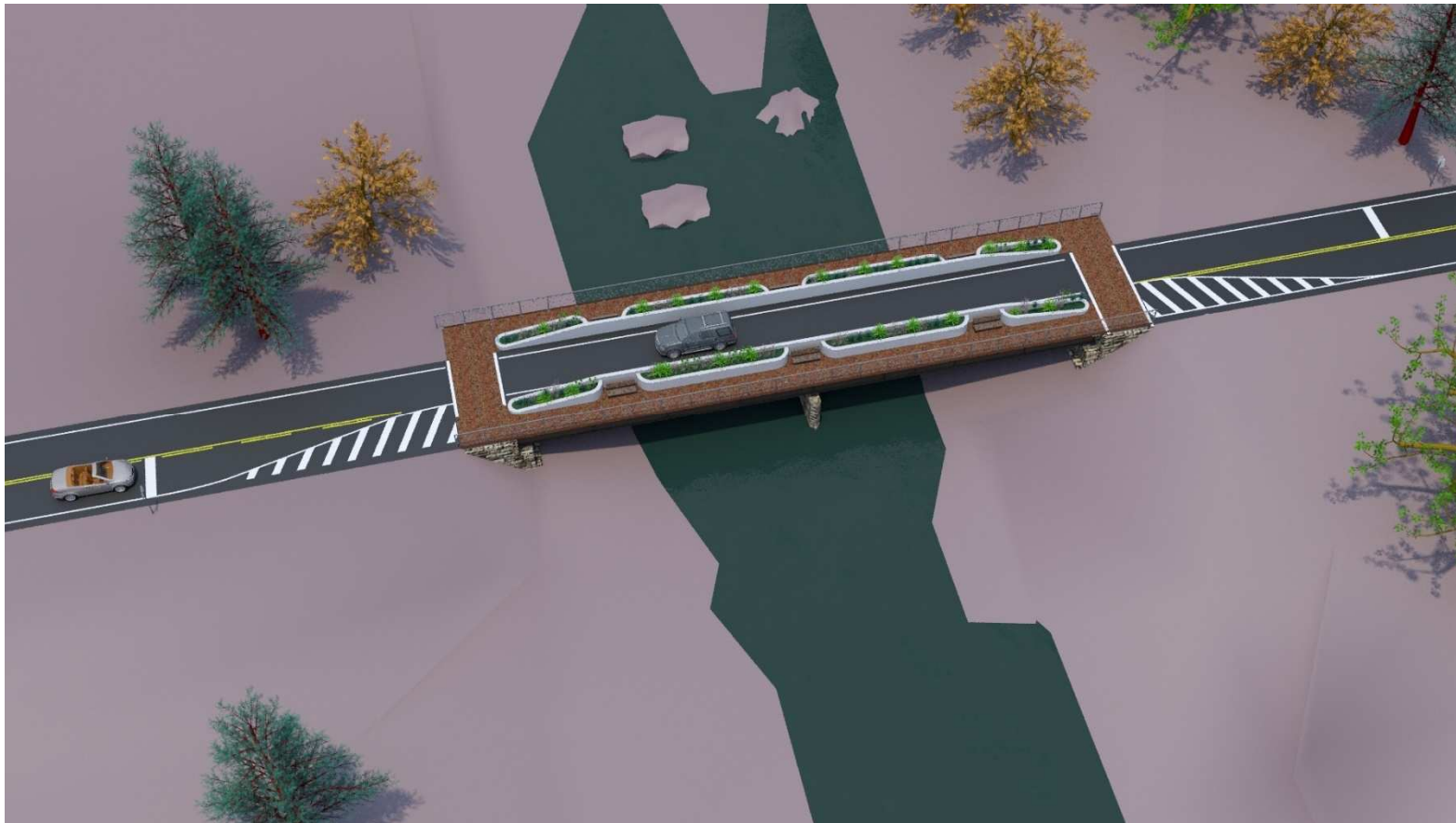


PROPOSED BRIDGE SECTION
 LOOKING AHEAD STATION
 SCALE 1/4" = 1'-0"

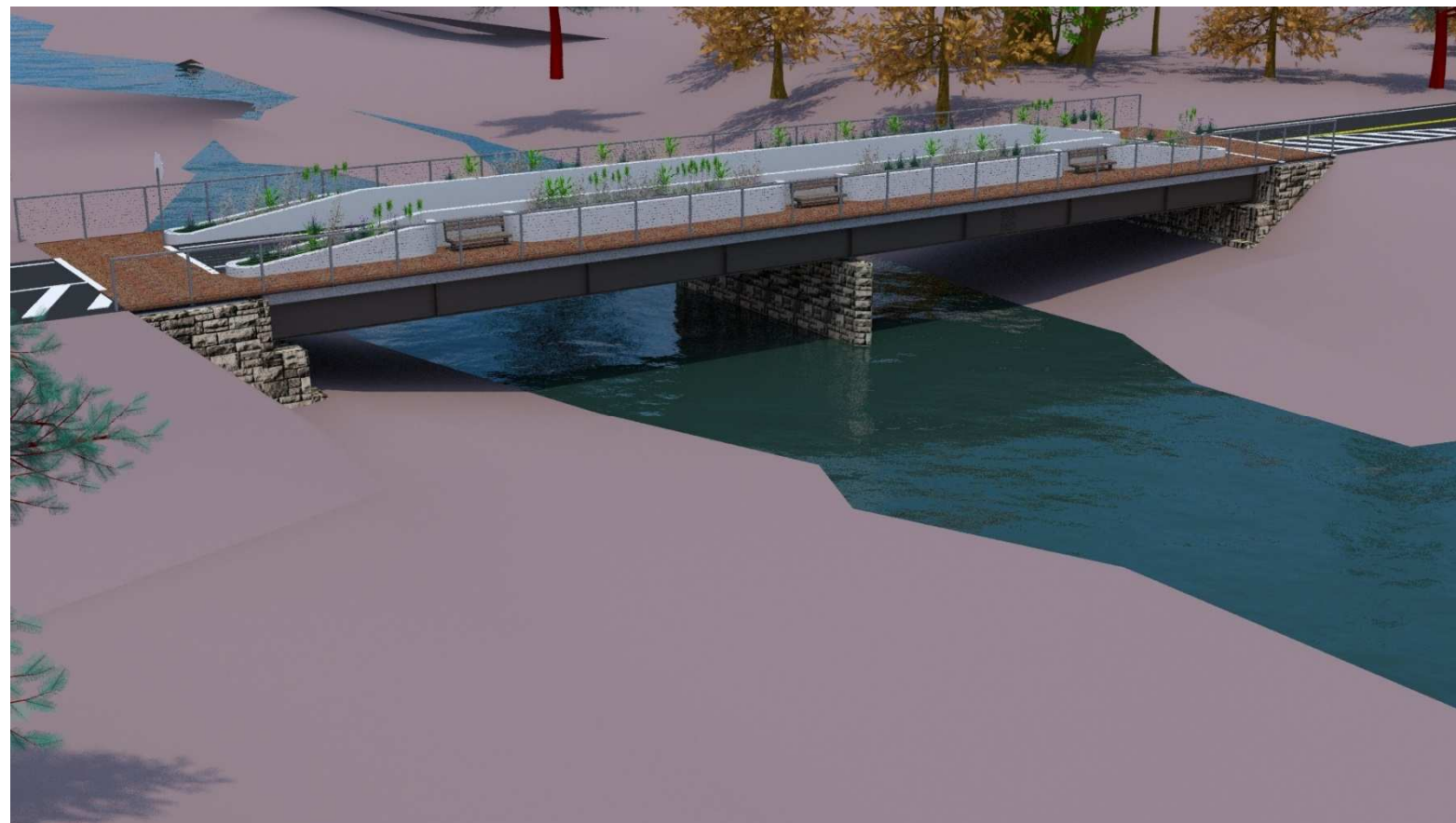
Latest Iteration (Visualization)



Latest Iteration (Visualization)



Latest Iteration (Visualization)



Latest Iteration (Visualization)



A scenic photograph of a river flowing through a forest with vibrant autumn foliage. A bridge spans the river, and the water reflects the surrounding trees. The text "Thank You!" is overlaid in the center.

Thank You!

Questions?

A partial view of a logo, showing a dark blue curved shape on a white background.