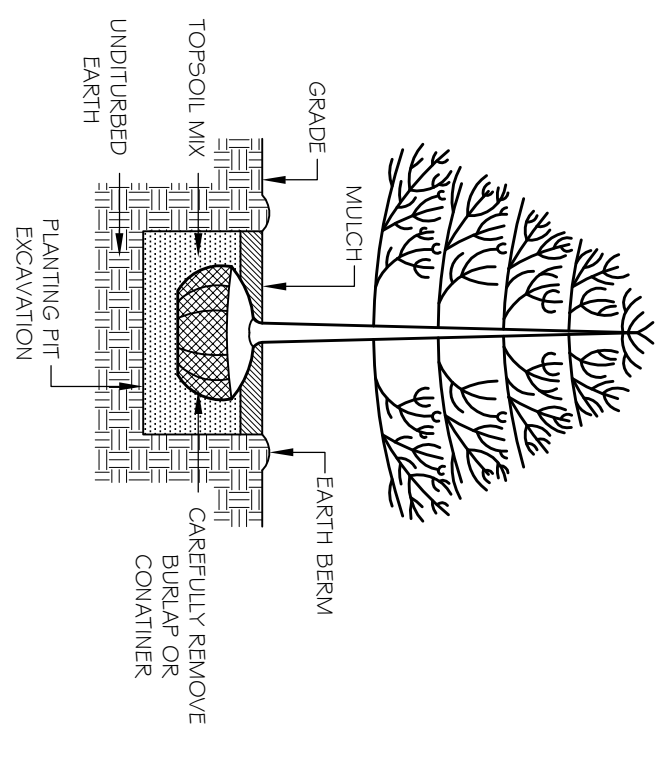


- CATCH BASIN NOTES:
1. SEE SITE UTILITY PLAN FOR GENERAL NOTES, SETS, DIMENSIONS, DEPTHS, AND FRAMES & GRATES FOR ALL CATCH BASINS.
 2. THE ENDS OF ALL PIPE PENETRATIONS INTO CATCH BASINS ARE TO BE CUT SQUARE AND THE ENDS OF ALL PIPES TO BE FLARED.
 3. PLACE AROUND INTERIOR AND EXTERIOR OF ALL PIPE PENETRATIONS.
 4. PLACE CATCH BASIN ON MIN. 6" CRUSHED STONE BEDDING.
 5. PROVIDE MINIMUM OF 12" SLUMP AT BOTTOM OF ALL CATCH BASINS.
 6. PROVIDE MINIMUM OF 12" SLUMP BETWEEN INLET AND OUTLET INVERT UNLESS OTHERWISE NOTED ON PLAN.

CATCH BASIN DETAIL

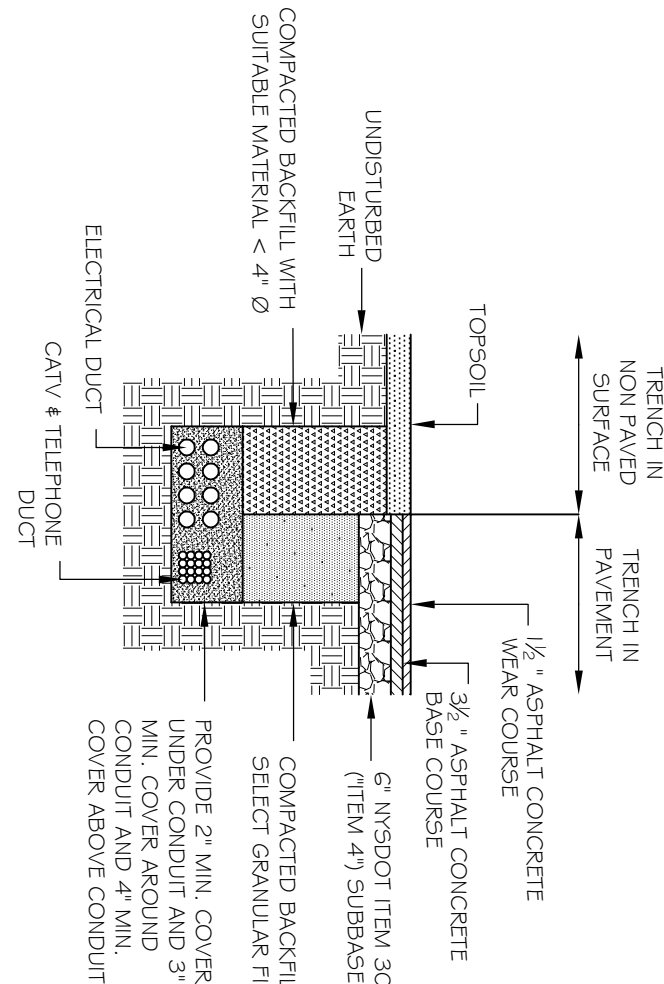
N.T.S



- GENERAL PLANTING NOTES:
1. TRIM OR REMOVE ANY DAMAGED, DISHEALED, BROKEN OR WEAK BRANCHES IMMEDIATELY AFTER PLANTING.
 2. PLANTING PIT EXCAVATION TO BE 2X WIDTH OF ROOT BALL IN SOIL AND 3X WIDTH OF ROOT BALL IN ROCK.
 3. MULCH WITH SOIL SURFACE OR 1" 2" ABOVE SOIL SURFACE. DO NOT COVER TOP OF ROOT BALL WITH SOIL.
 4. TOPSOIL MIX TO BE 2 PARTS TOPSOIL TO ONE PART ORGANIC MULCH.
 5. WATER PLANTS THOROUGHLY AFTER INSTALLATION.
 6. WATER PLANTS THOROUGHLY AFTER INSTALLATION.
 7. STAKE TREES ONLY IF NECESSARY. STAKING IS NOT REQUIRED, BUT IF INSTALLED STAKING MUST BE REMOVED NO LATER THAN ONE YEAR AFTER PLANTING.

TREE & SHRUB PLANTING DETAIL
B&B OR CONTAINER PLANTS

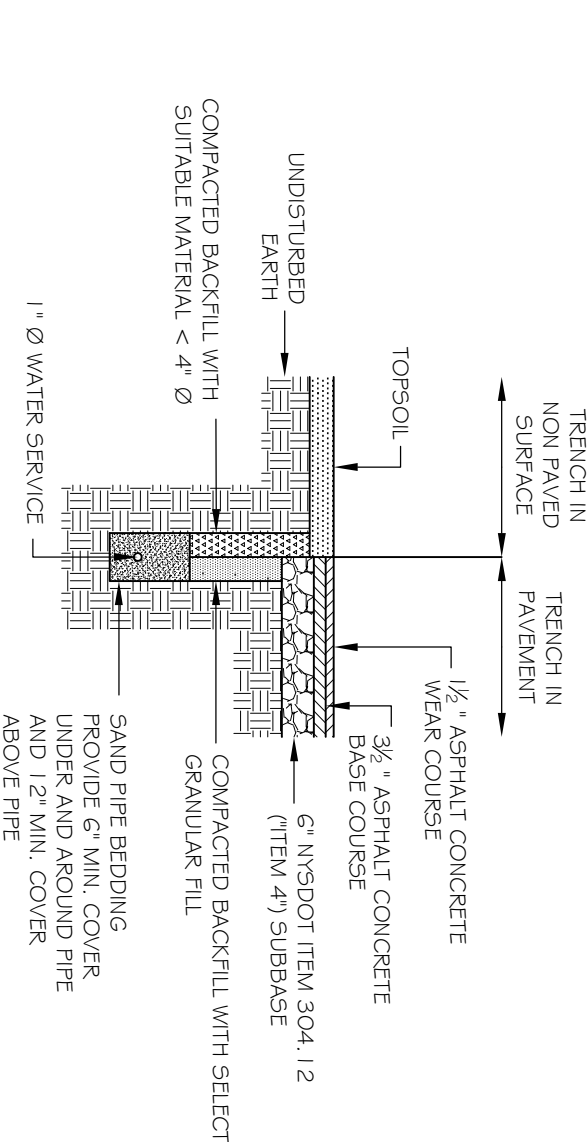
N.T.S



ALL UNDERGROUND CONDUIT INSTALLATIONS INCLUDING COVER REQUIREMENTS, GROUNDING, AND PROTECTION SHALL BE IN ACCORDANCE WITH THE NATIONAL ELECTRICAL CODE, 2009 EDITION OF THE NFPA 70 CODE FOR STREETS AND HIGHWAYS, AND ANY OTHER UTILITY COMPANY REQUIREMENTS.

TYPICAL UTILITY TRENCH

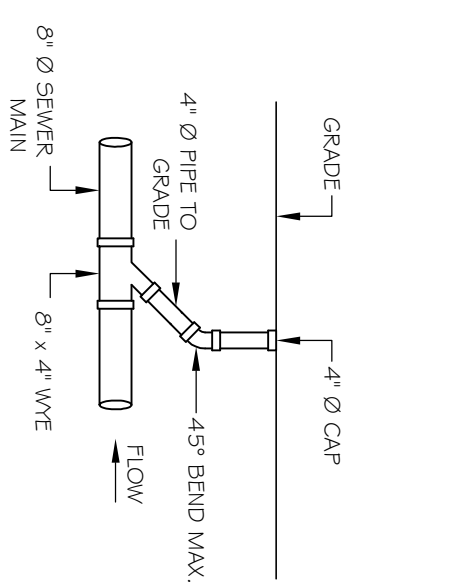
N.T.S



NOTE: ALL BACKFILL MATERIAL USED IN THE CITY OF BEACON ROAD RIGHT OF WAY TO BE INSPOOT ITEM NO. 304.1/2

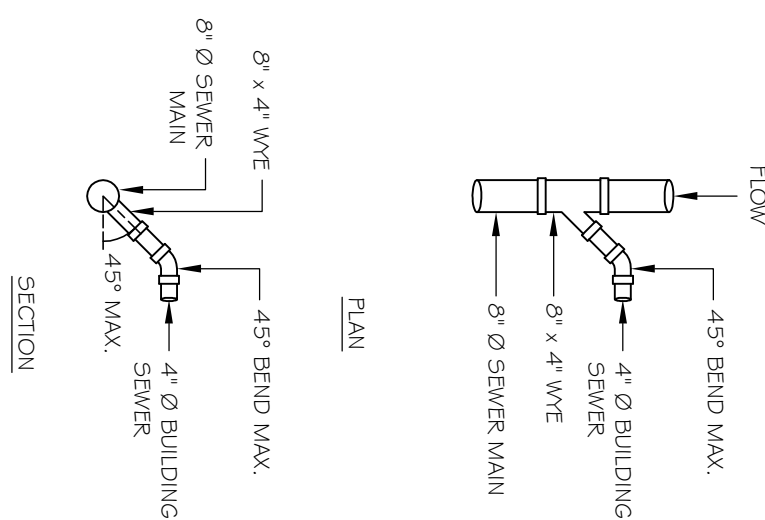
TYPICAL WATER SERVICE TRENCH

N.T.S



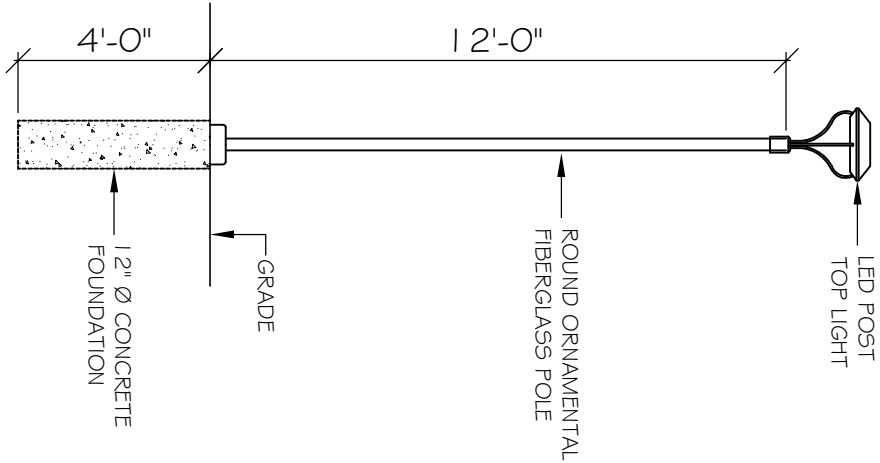
TYPICAL SEWER CLEAN OUT DETAIL

N.T.S



TYPICAL SEWER SERVICE DETAIL

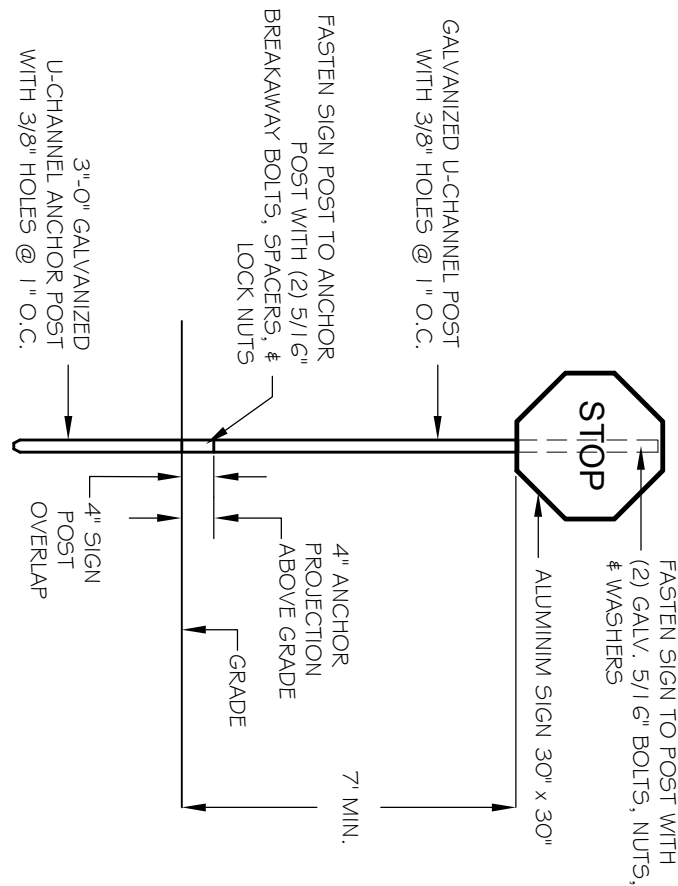
N.T.S



NOTE: ALL POST LIGHTS TO BE MOORE & LIGHTSOUND, AS MANUFACTURED BY MOORE & LIGHTSOUND, 1000 WILSON AVENUE, SUITE 100, BEACON, NY 12508. POST LIGHT PROVIDED DARK SKY DESIGN. DAWN PHOTOCONTROL.

TYPICAL POST LIGHT DETAIL

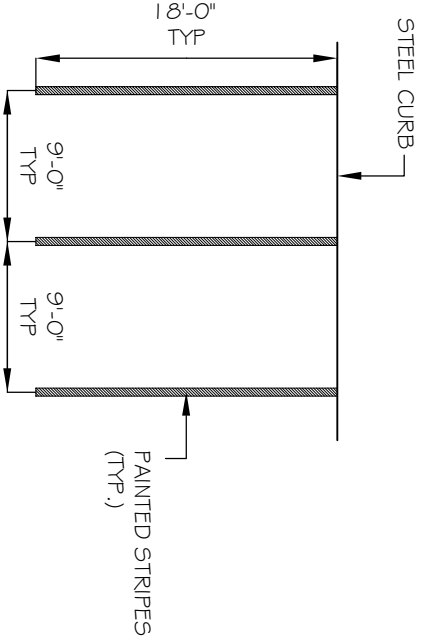
N.T.S



STOP SIGN TO BE TYPE A-1, STOP SIGN IN CONFORMANCE WITH THE 2009 EDITION OF THE NFPA 70 CODE FOR STREETS AND HIGHWAYS

STOP SIGN DETAIL

N.T.S



PARKING LOT STRIPING NOTE:
ALL PARKING STRIPES TO BE 4\"/>

TYPICAL PARKING STRIPING DETAIL

N.T.S