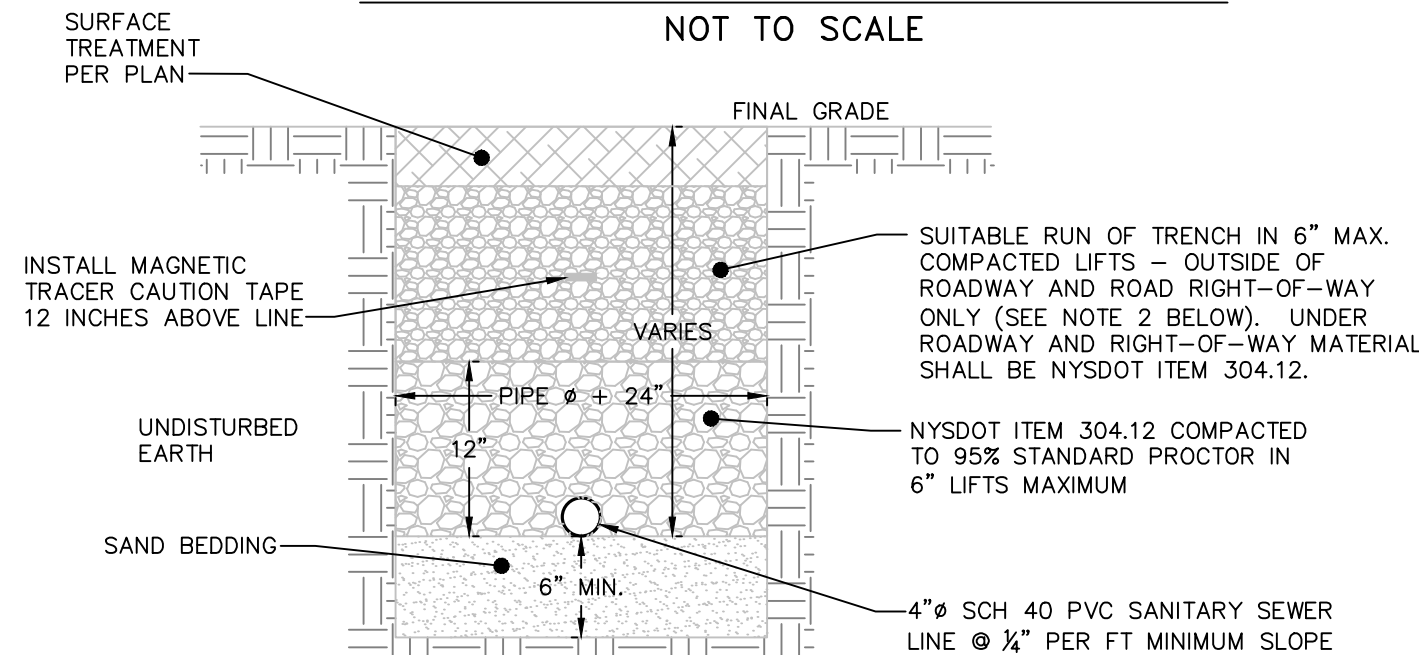


- NOTES:**
1. A MINIMUM 5' COVER SHALL BE PROVIDED ON THE WATER SERVICE LINE (CONDITIONED ON ACTUAL WATER MAIN DEPTH).
  2. CORPORATION STOP TO BE COMPRESSION TYPE BY MUELLER.
  3. WATER SERVICE LINE TO HAVE A 'GOOSENECK' NEAR CORPORATION STOP.
  4. CORPORATION STOP TO BE INSTALLED IN THE UPPER HALF OF THE WATER MAIN AT AN ANGLE OF APPROXIMATELY 45° FROM HORIZONTAL.
  5. THE CONTRACTOR SHALL INSTALL A FULL BODIED STAINLESS STEEL TAPPING SLEEVE AT THE PROPOSED WATER SERVICE LOCATION.

### WATER SERVICE CONNECTION DETAIL

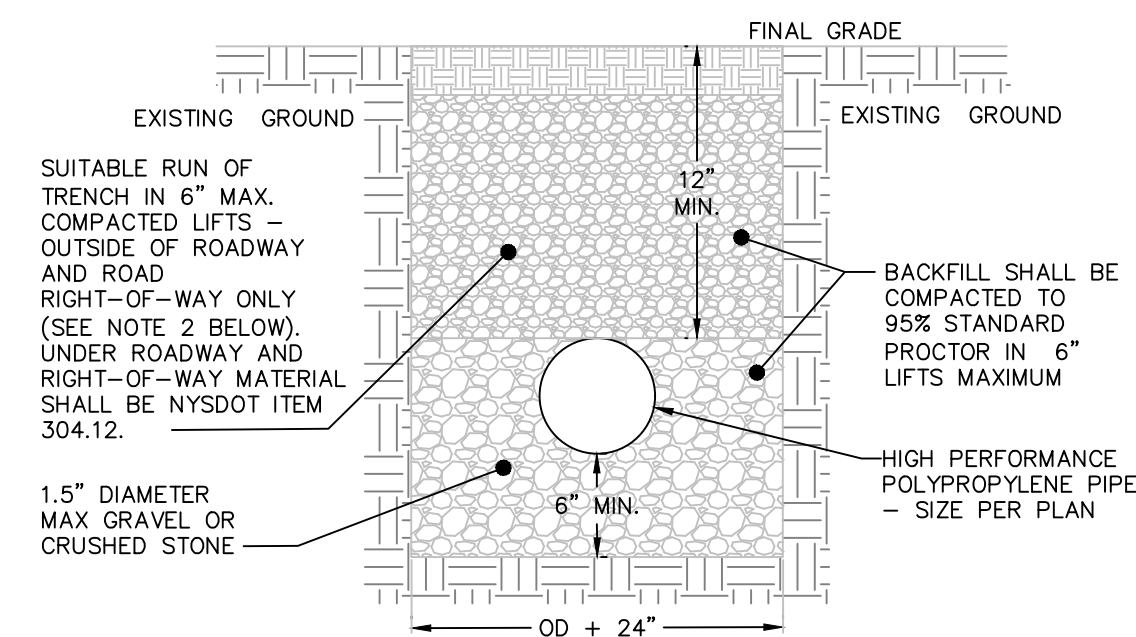
NOT TO SCALE



- NOTES:**
1. EXCAVATION AND TRENCHING SHALL MEET ALL OSHA REQUIREMENTS.
  2. SUITABLE RUN OF TRENCH SHALL NOT INCLUDE FROZEN MATERIALS, DEBRIS, ORGANIC MATERIALS, LARGE STONES OR OTHER UNSUITABLE MATERIALS. IF THE RUN OF TRENCH MATERIAL IS FOUND TO BE UNSUITABLE, A SUITABLE BACKFILL MATERIAL SHALL BE IMPORTED AND USED.

### SANITARY SEWER SERVICE TRENCH DETAIL

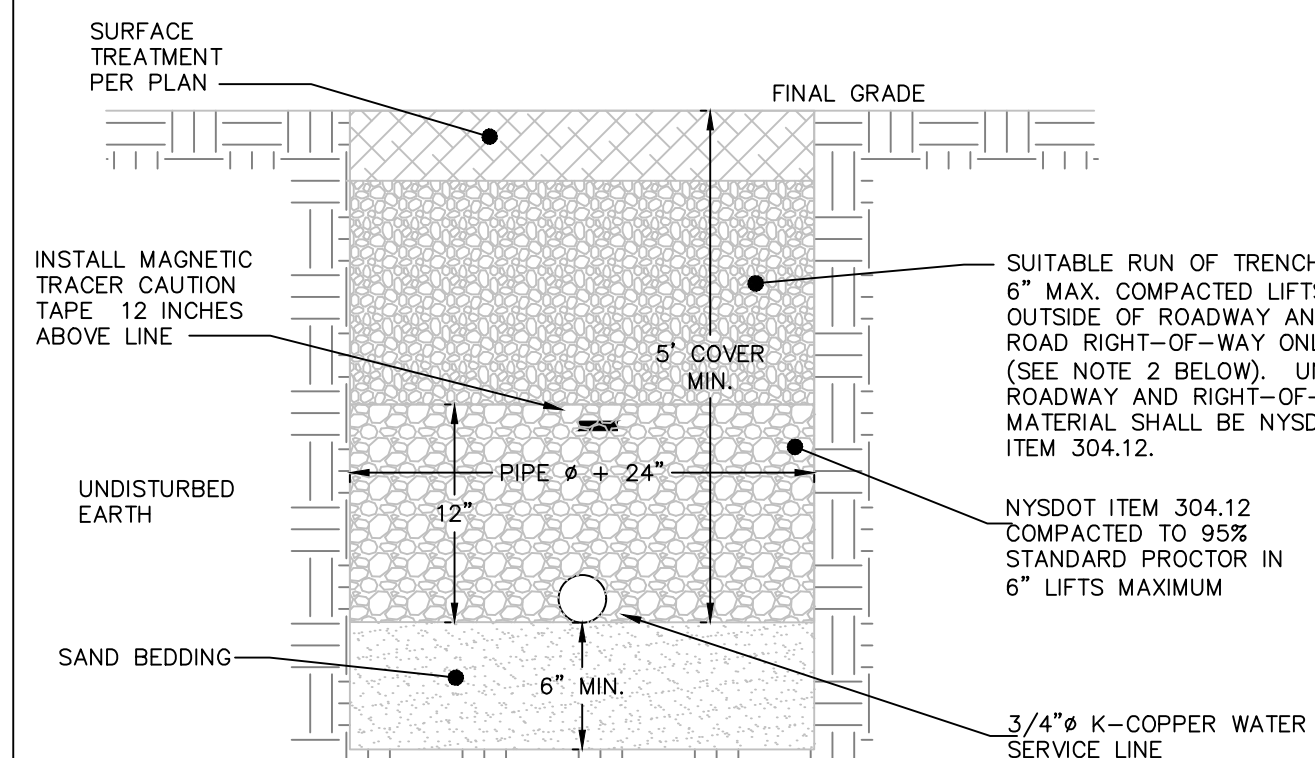
NOT TO SCALE



- NOTES:**
1. EXCAVATION AND TRENCHING SHALL MEET ALL OSHA REQUIREMENTS.

### STORM LINE TRENCH DETAIL

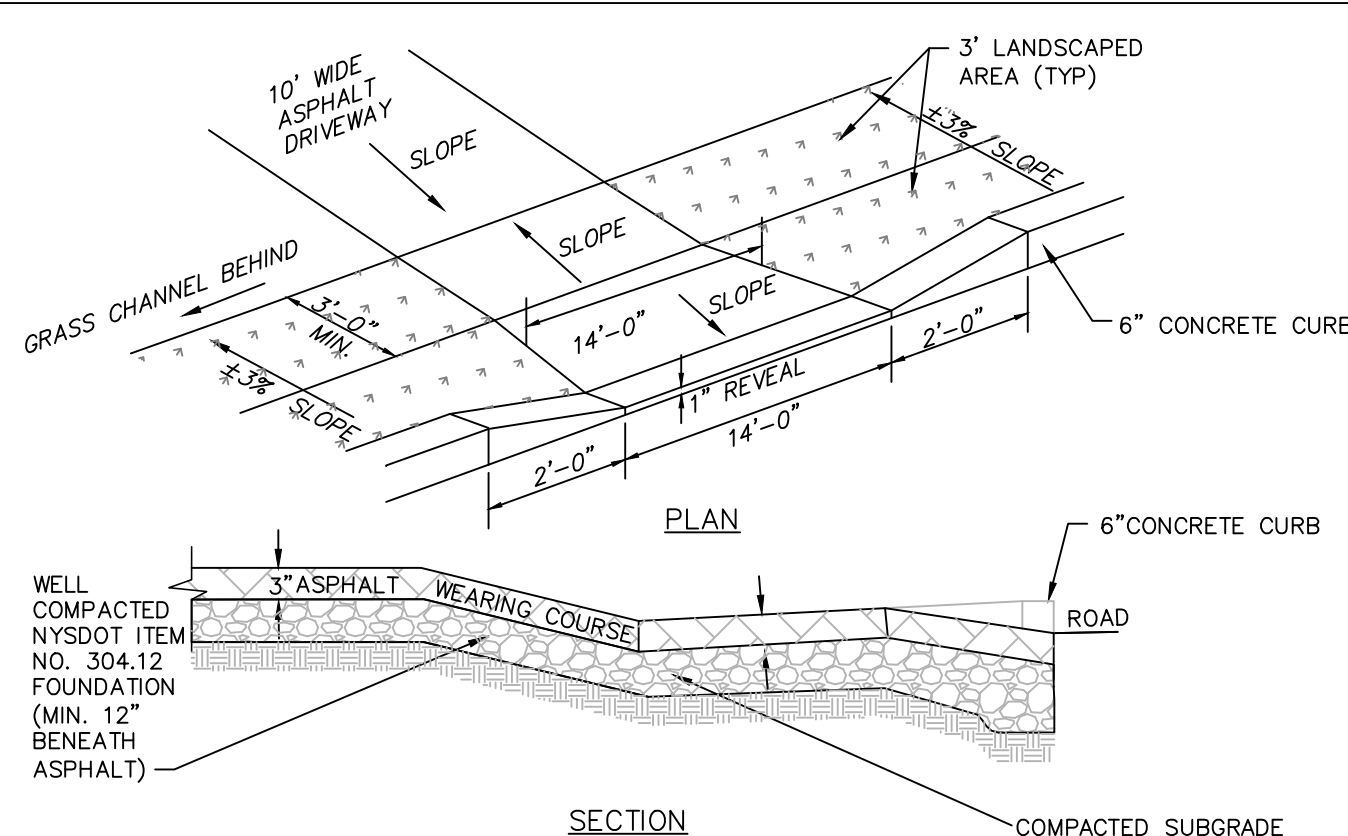
NOT TO SCALE



- NOTES:**
1. EXCAVATION AND TRENCHING SHALL MEET ALL OSHA REQUIREMENTS.
  2. SUITABLE RUN OF TRENCH SHALL NOT INCLUDE FROZEN MATERIALS, DEBRIS, ORGANIC MATERIALS, ENLOGATED PARTICLES, LARGE STONES OR OTHER UNSUITABLE MATERIALS. IF THE RUN OF TRENCH MATERIAL IS FOUND TO BE UNSUITABLE, A SUITABLE BACKFILL MATERIAL SHALL BE IMPORTED AND USED.
  3. IN AREAS WHERE 5' COVER REQUIREMENT CANNOT BE MET, THE CONTRACTOR SHALL PROVIDE PIPE INSULATION TO PREVENT FREEZING.
  4. IF WATER SERVICE AND SEWER SERVICE LINE CROSSINGS ARE NEEDED, PROVIDE 18" OF VERTICAL SEPARATION

### WATER SERVICE LINE TRENCH DETAIL

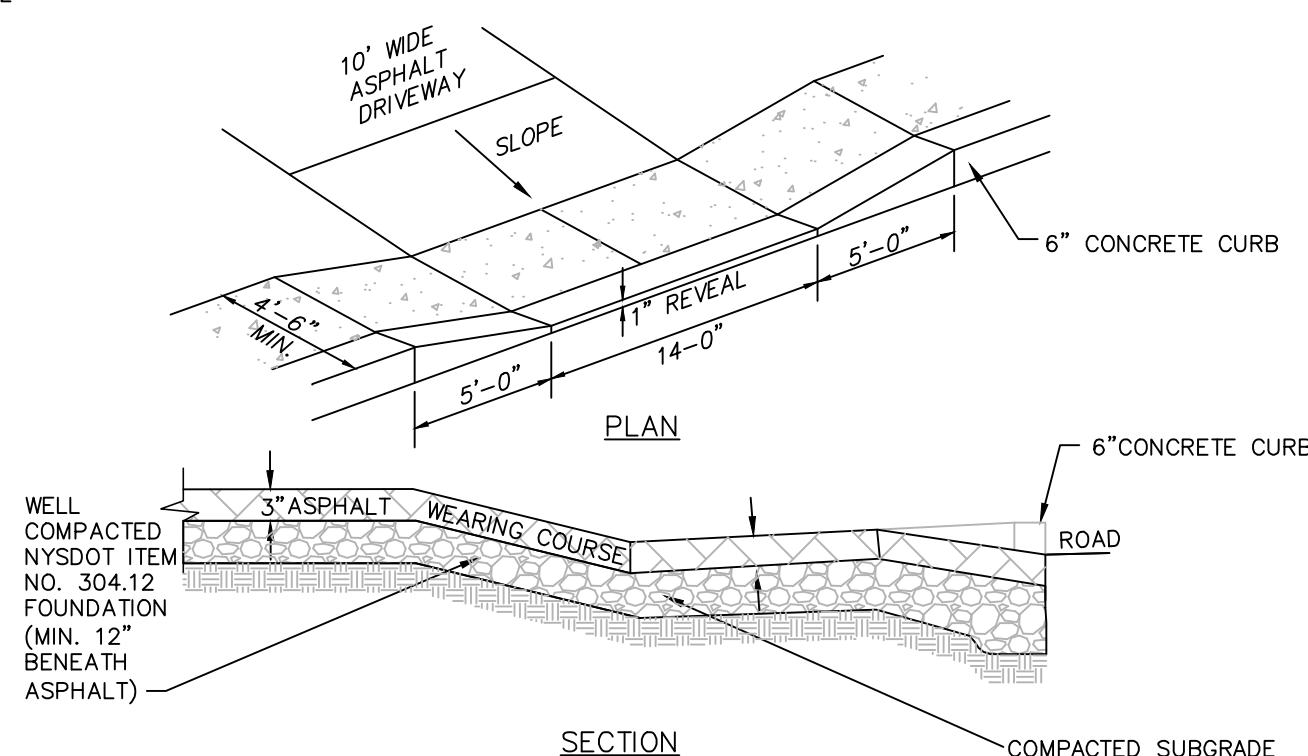
NOT TO SCALE



- NOTE:**
1. RESEED AND STABILIZE GRASS AREAS AFTER ASPHALT INSTALLATION.

### LOT 3 DRIVEWAY ENTRANCE DETAIL

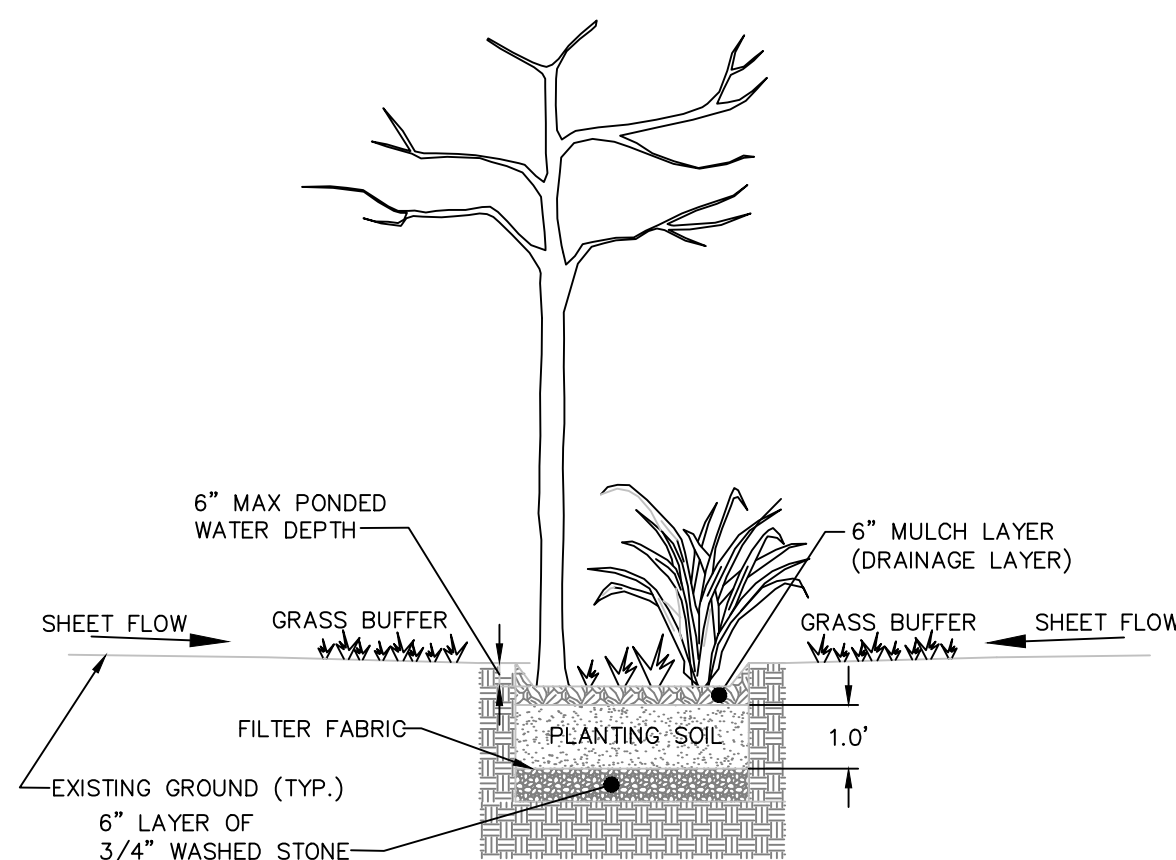
NOT TO SCALE



- NOTE:**
1. RESEED AND STABILIZE GRASS AREAS AFTER ASPHALT INSTALLATION.

### LOT 2 DRIVEWAY ENTRANCE DETAIL

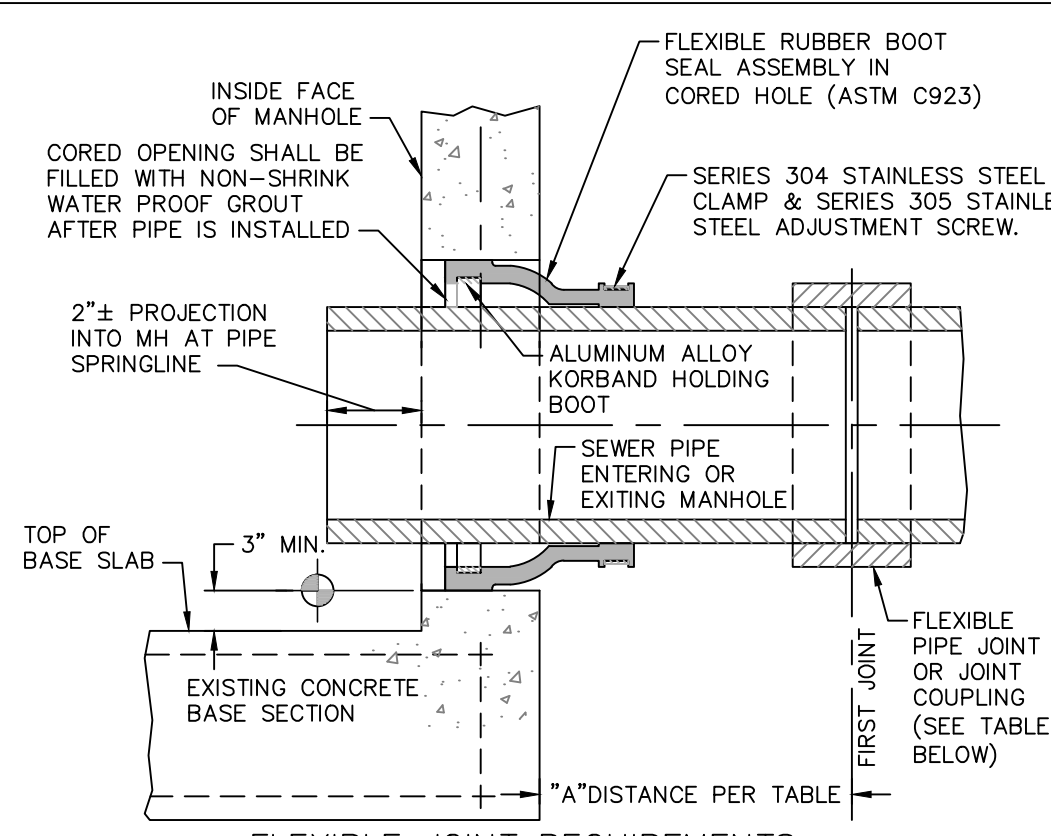
NOT TO SCALE



- NOTES:**
1. RAIN GARDEN TO HAVE A MINIMUM FOOTPRINT OF 60 SQUARE FEET WITH 10:1 SIDE SLOPES AT 0.5' DEEP; 1.0' SOIL MEDIA DEPTH; 0.5' DRAINAGE LAYER DEPTH; AND 0.5' PONDING DEPTH.
  2. DIRECT ROOF LEADER DISCHARGE TO RAIN GARDEN.
  3. PLANTS SHALL BE PLACED IN AREA SHOWN ON THE PLAN.

### TYPICAL RAIN GARDEN DETAIL

NOT TO SCALE

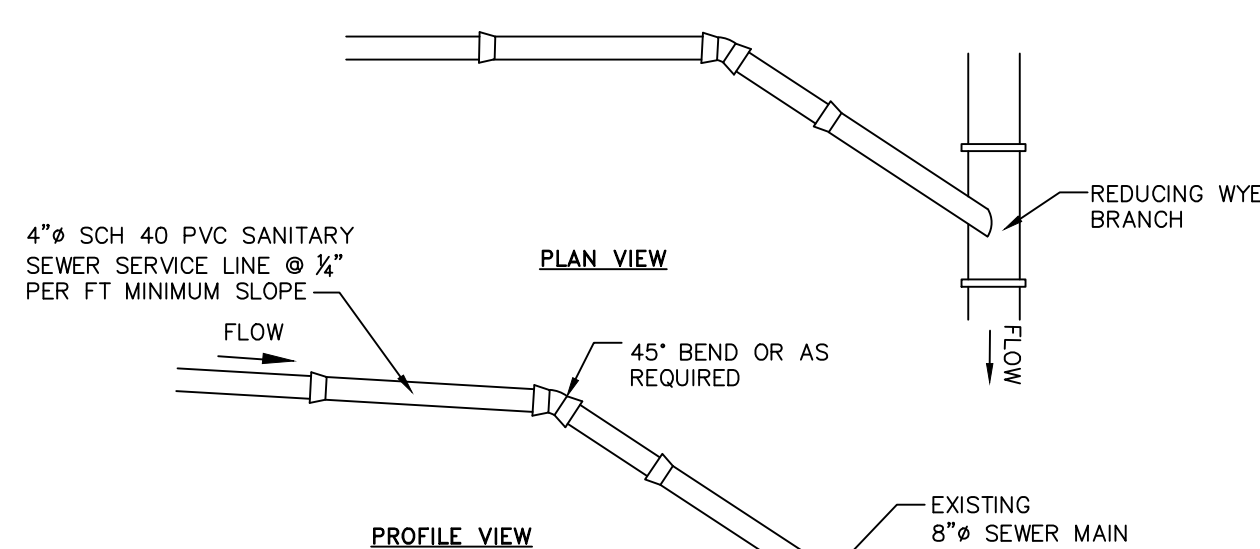


SEWER PIPE TYPE	FLEXIBLE JOINT TYPE IN & OUT	"A" DISTANCE (FEET)
DUCTILE IRON	STD RUBBER GASKET PIPE JOINT ONLY	10' MAX
PVC	STD RUBBER GASKET PIPE JOINT ONLY	3' MAX

- NOTE:**
- REFERENCE MANHOLE DETAIL(S) FOR REQUIRED INVERT CHANNEL CONFIGURATION.

### CORED HOLE AND INSERTED BOOT DETAIL

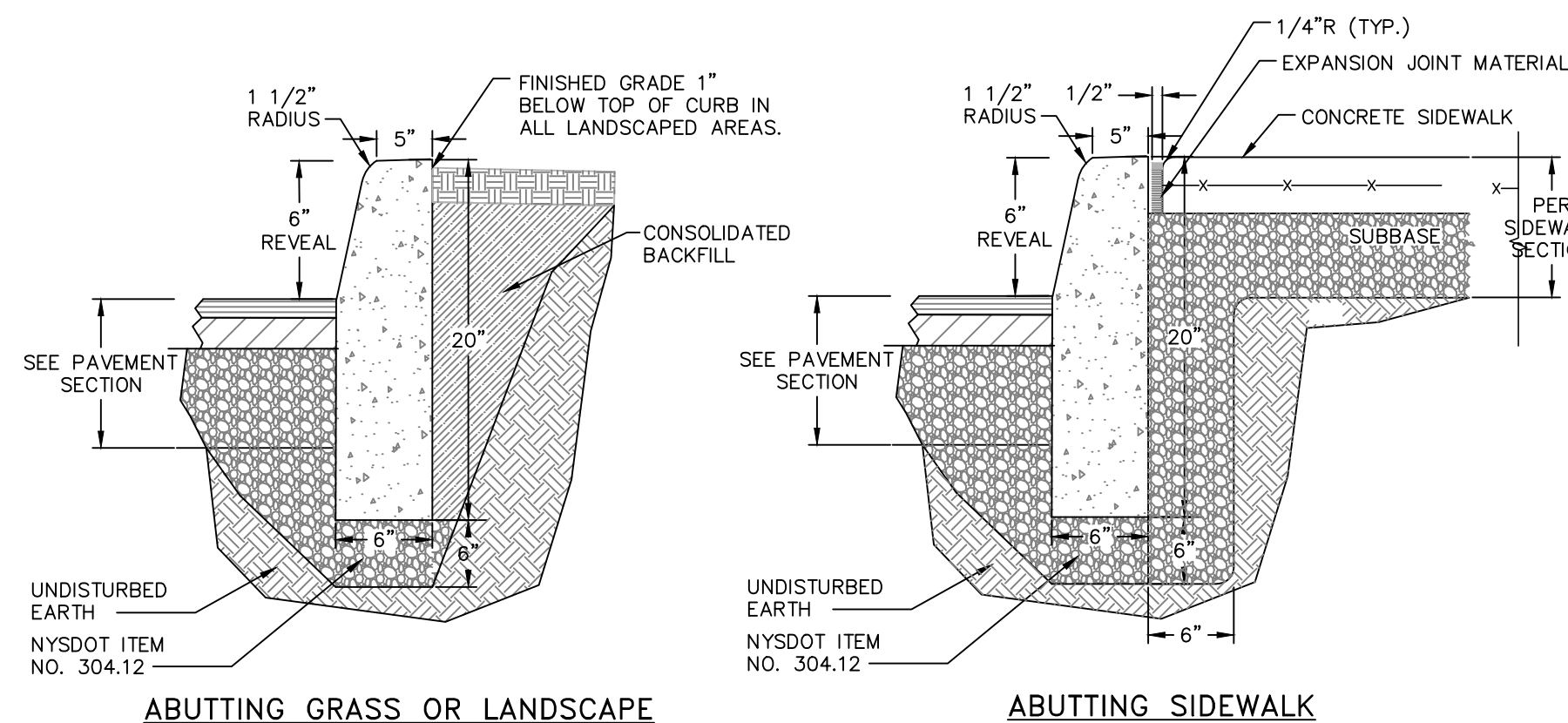
NOT TO SCALE



- NOTES:**
1. EXCAVATION AND TRENCHING SHALL MEET ALL OSHA REQUIREMENTS.
  2. SUITABLE RUN OF TRENCH SHALL NOT INCLUDE FROZEN MATERIALS, DEBRIS, ORGANIC MATERIALS, LARGE STONES OR OTHER UNSUITABLE MATERIALS. IF THE RUN OF TRENCH MATERIAL IS FOUND TO BE UNSUITABLE, A SUITABLE BACKFILL MATERIAL SHALL BE IMPORTED AND USED.
  3. TAPPING SADDLE FOR CONNECTION OF THE PROPOSED SERVICE LINE TO THE EXISTING SEWER MAIN TO BE A 4" PREDCO HUB TAP SADDLE – MODEL #HTS4/E.

### SANITARY SEWER SERVICE CONNECTION DETAIL

NOT TO SCALE



- NOTES:**
1. CONCRETE CURB SHALL BE 4,000 PSI CAST-IN-PLACE, AND IN ACCORDANCE WITH NYSOT STANDARD SPECIFICATION SECTION 609.
  2. EXPANSION JOINTS OF 1/2" CELLULOSE OR SIMILAR MATERIAL SHALL BE PLACED AT 10 FOOT INTERVALS.
  3. FOR MOUNTABLE CURBS ABUTTING SIDEWALK OR OTHER HARDSCAPE, REFER TO "ABUTTING SIDEWALK" DETAIL.
  4. CONCRETE SHALL BE SEALED WITH A SALT RESISTANT SEALER.

### CAST-IN-PLACE CONCRETE CURB DETAIL

NOT TO SCALE

DRAWN BY: AG		CHECKED BY: DGK	JOB NO.: 2018-012
REVISIONS:			
NO.	DATE	DESCRIPTION	BY

**Dig Safely. New York**

**800-962-7962**

[www.digsafelynewyork.org](http://www.digsafelynewyork.org)

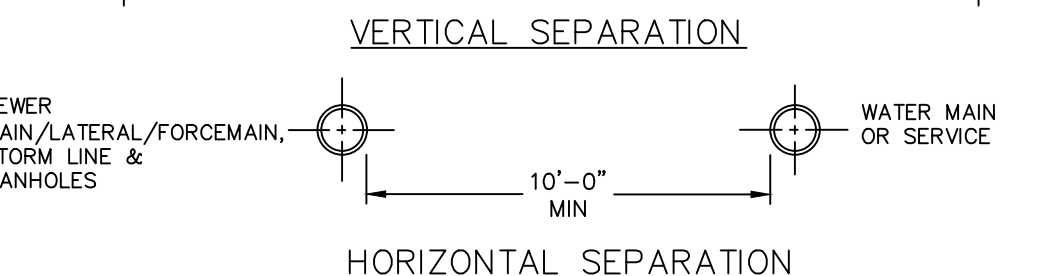
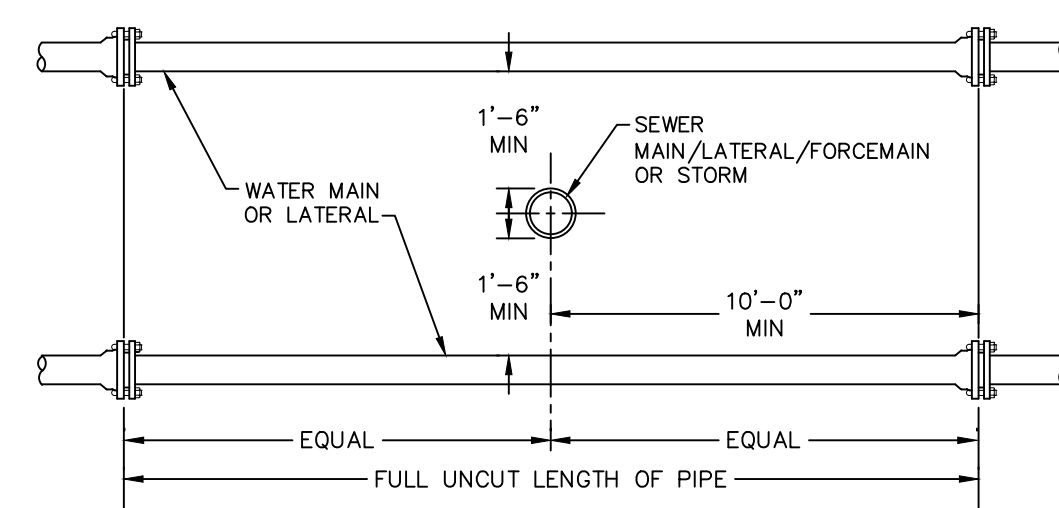
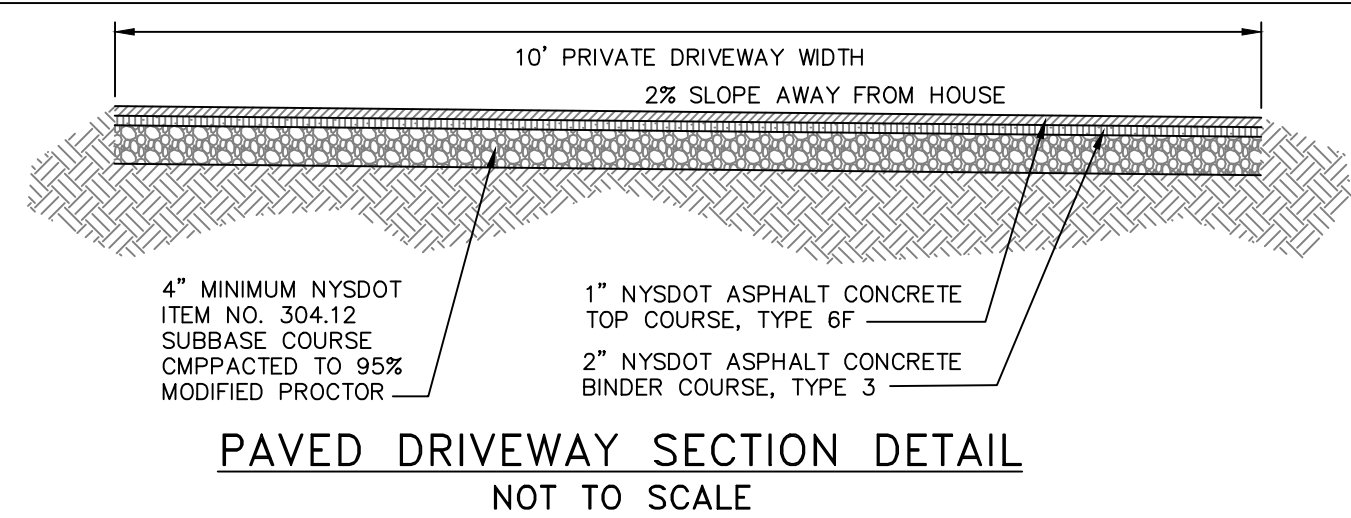
☐ Call Before You Dig

☐ Wait The Required Time

☐ Confirm Utility Response

☐ Respect the Marks

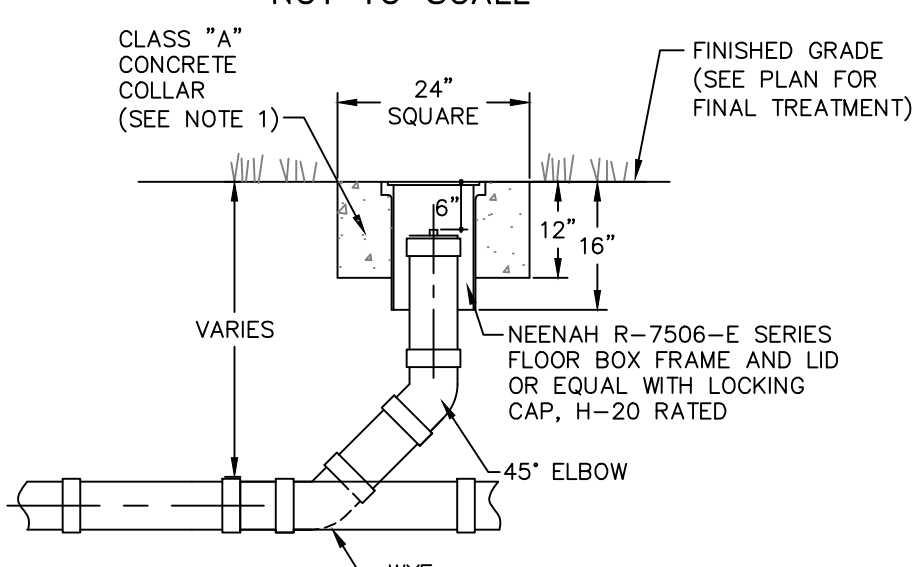
☐ Dig With Care



- NOTE:**
- NO DEVIATION IN THE SEPARATION REQUIREMENTS WILL BE PERMITTED WITHOUT THE EXPRESS APPROVAL OF THE DUTCHESS COUNTY DEPARTMENT OF HEALTH AND THE CITY OF BEACON. CONCRETE ENCASMENT OF WATERLINE OR OFFSETTING OF WATERLINE SHALL BE REQUIRED WHERE SEPARATION DISTANCES CANNOT BE MAINTAINED.

### WATER LINE SEPARATION DETAIL

NOT TO SCALE



- NOTES:**
1. CONCRETE COLLAR TO BE PROVIDED IN AREAS THAT ARE NOT PAVED. THE COLLAR SHALL BE 6" FROM THE COVER AND SHALL EXTEND 6" BELOW FINAL GRADE.

### CLEANOUT DETAIL

NOT TO SCALE

APPROVED BY RESOLUTION OF THE PLANNING BOARD OF THE CITY OF BEACON, NEW YORK, ON THE \_\_\_\_\_ DAY OF \_\_\_\_\_, 20\_\_\_\_, SUBJECT TO ALL REQUIREMENTS AND CONDITIONS OF SAID RESOLUTION. ANY CHANGE, ERASURE, MODIFICATION OR REVISION OF THIS PLAT, AS APPROVED, SHALL VOID THIS APPROVAL.

SIGNED THIS \_\_\_\_\_ DAY OF \_\_\_\_\_, 20\_\_\_\_, BY \_\_\_\_\_

\_\_\_\_\_ CHAIRMAN

\_\_\_\_\_ SECRETARY

IN ABSENCE OF THE CHAIRMAN OR SECRETARY, THE ACTING CHAIRMAN OR ACTING SECRETARY RESPECTIVELY MAY SIGN IN THIS PLACE.

## DETAILS

# 38 ST. LUKES SUBDIVISION

38 ST. LUKES PLACE  
CITY OF BEACON  
DUTCHESS COUNTY, NEW YORK  
TAX ID: 6054-38-156634  
SCALE: NTS  
APRIL 24, 2018



HUDSON LAND DESIGN  
PROFESSIONAL ENGINEERING P.C.

174 MAIN STREET  
BEACON, NEW YORK 12508  
PH: 845-440-6926 F: 845-440-6637



JON D. BODENDORF, P.E.  
NYS LICENSE NO. 076245  
DANIEL G. KOEHLER, P.E.  
NYS LICENSE NO. 082716

SHEET: 4 OF 4