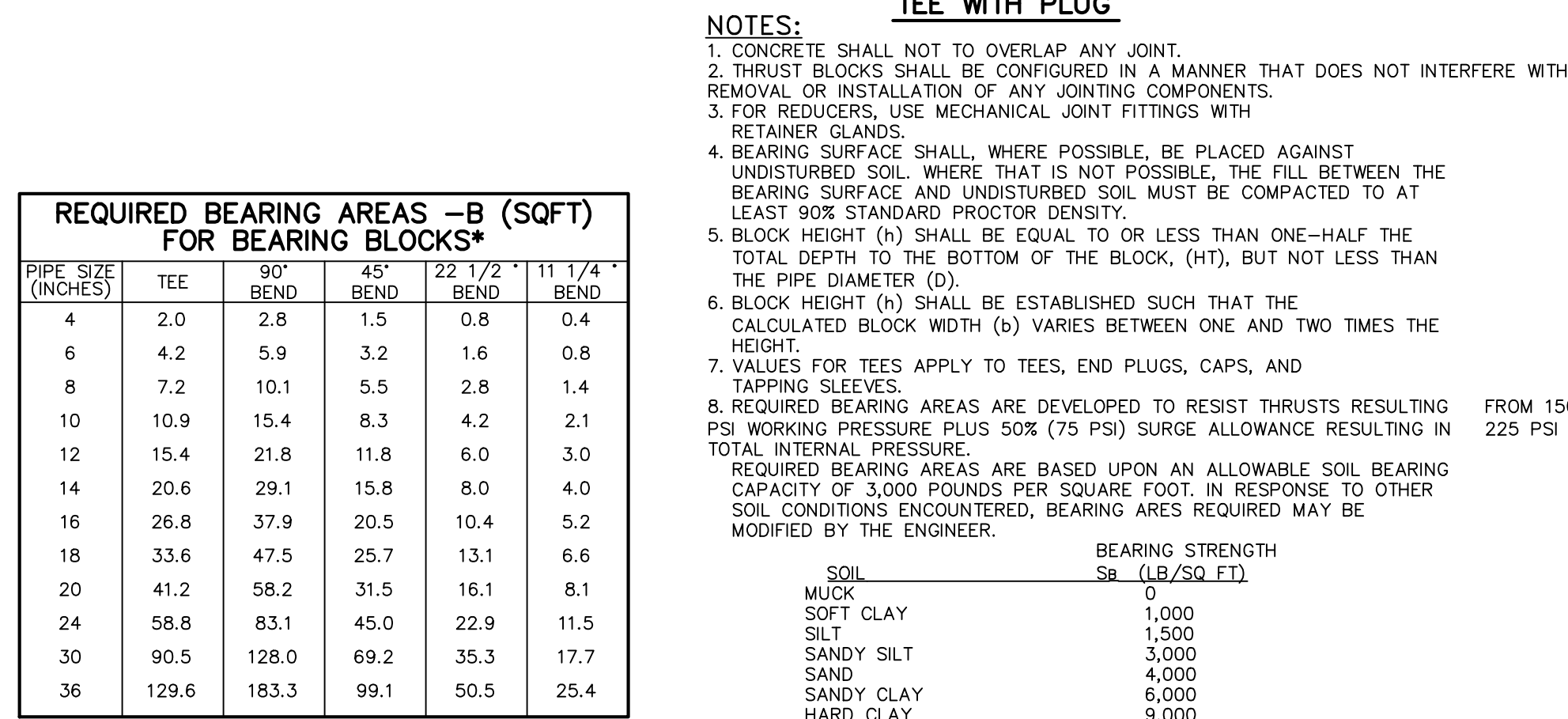
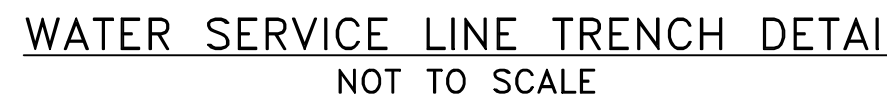
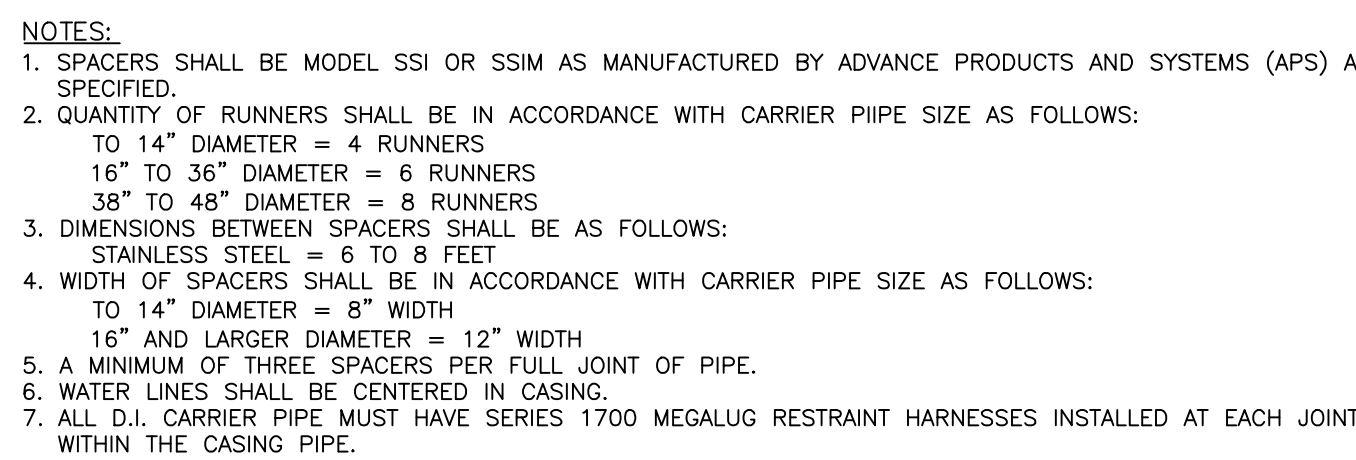


Diagram illustrating the installation of a storm sewer. The diagram shows a cross-section of the ground with a storm sewer pipe installed. The pipe is labeled "STORM SEWER OR STORM SEWER" and is shown with a "45° ELBOW (TYP.)" and a "PIPE BEDDING" layer. The pipe is surrounded by "COMPACTED SUBGRADE" and "CONCRETE THURST BLOCK BENEATH ELBOW WITH RODDING". The pipe is also shown with a "SUITABLE RUN OF PIPE IN 6' MAX. COMPACTED LIFTS" and a "PAVEMENT SECTION (SEE NOTE 4)". The diagram includes labels for "RIGHT-OF-WAY ONLY" and "RIGHT-OF-WAY ENTIRE FRENCH TO PIPE CROWN MATERIAL SHALL BE NYDROT ITEM 304.14".

WATER LINE OFFSET DETAIL
NOT TO SCALE



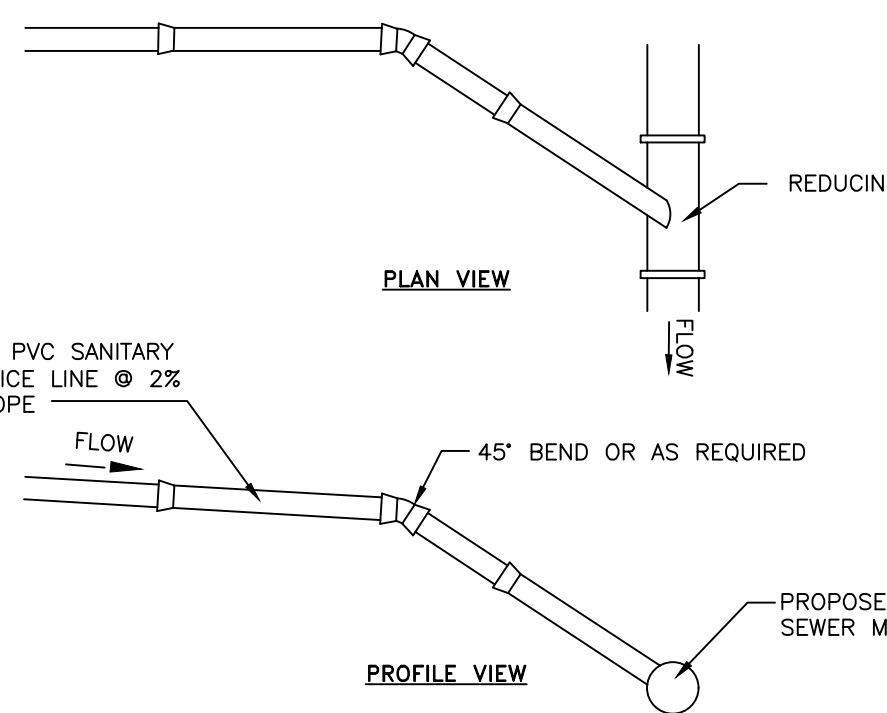
FLUSH HYDRANT
NOT TO SCALE



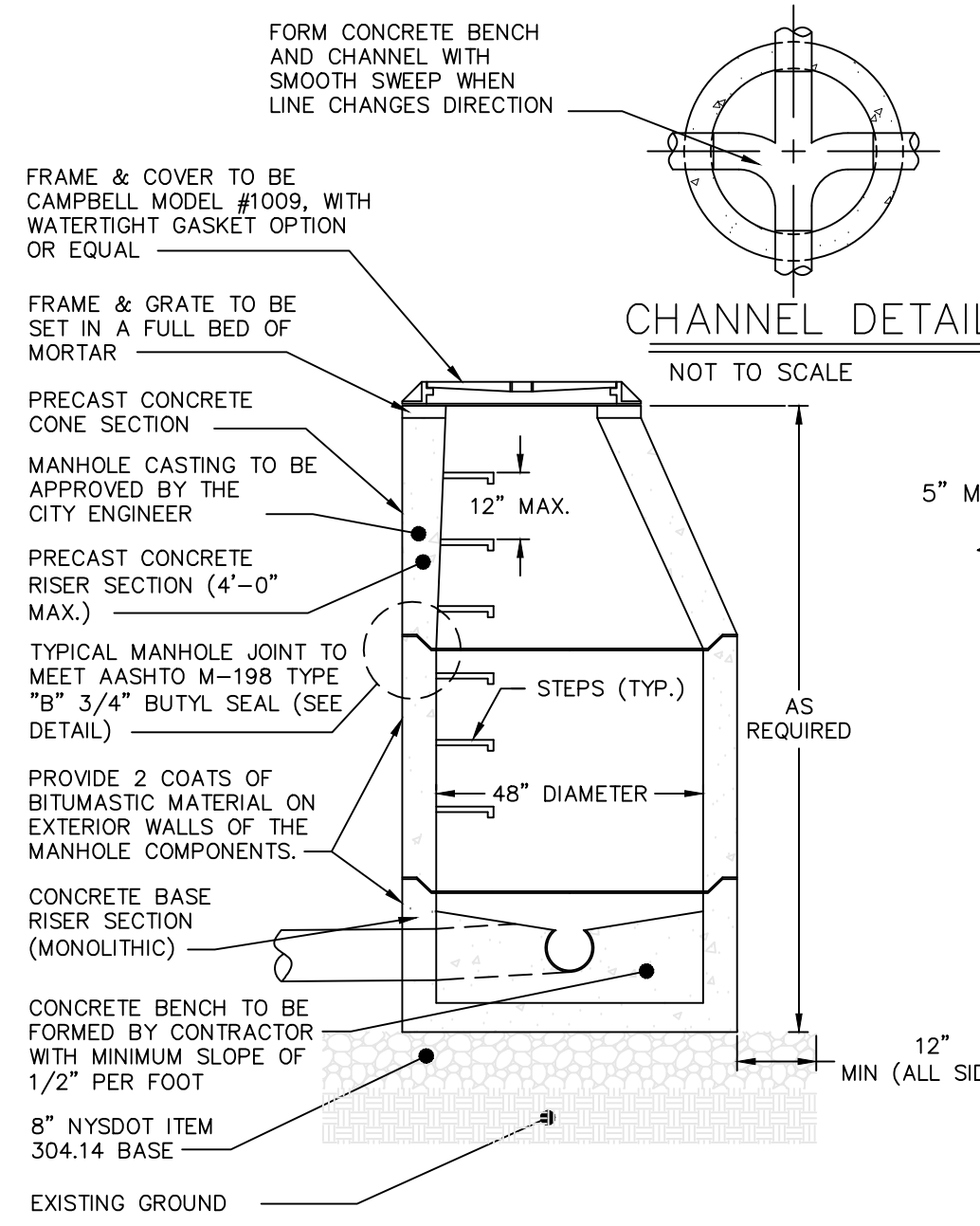
WATER SERVICE CONNECTION DETAIL
NOT TO SCALE

[illegible]

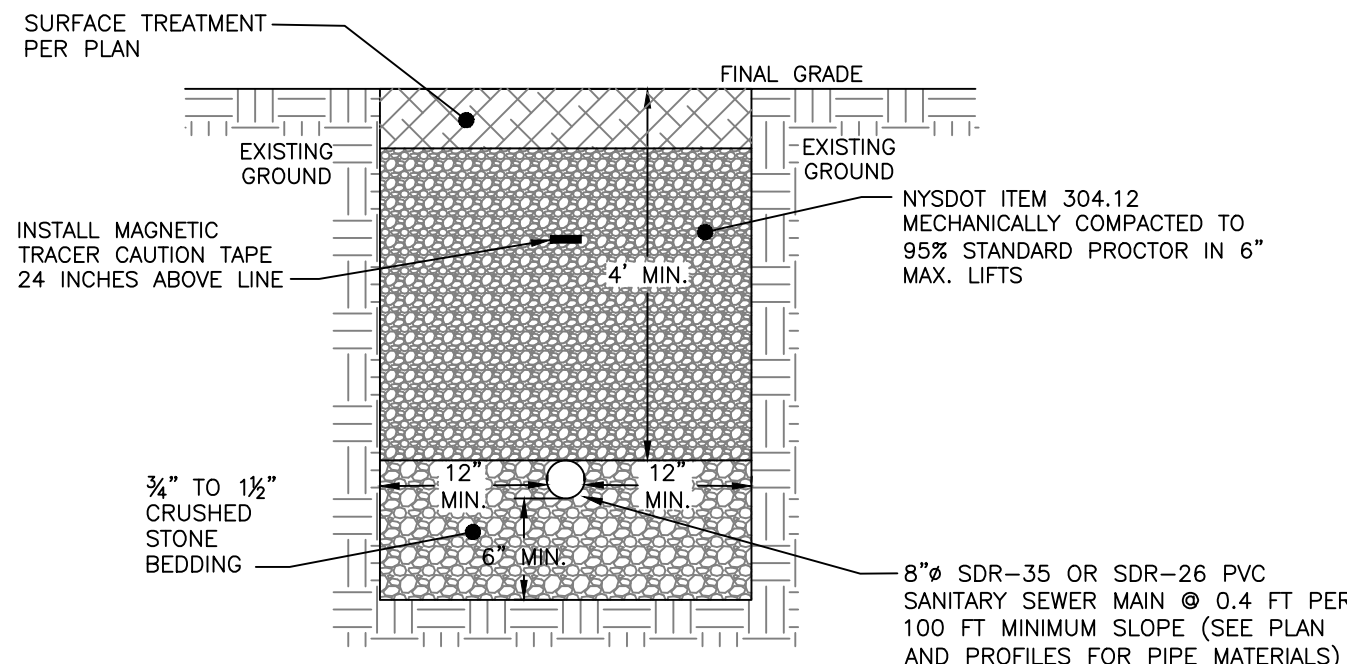
SANITARY SEWER SERVICE LINE TRENCH DETAIL
NOT TO SCALE



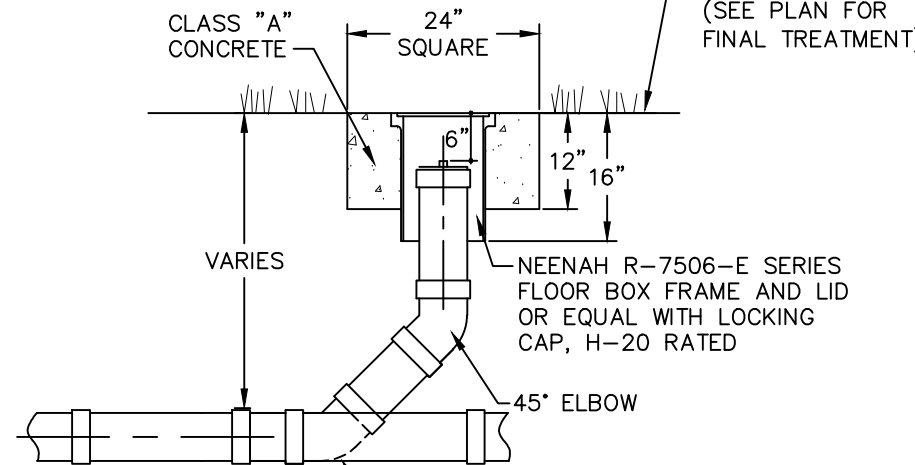
SANITARY SEWER SERVICE CONNECTION DETAIL
NOT TO SCALE



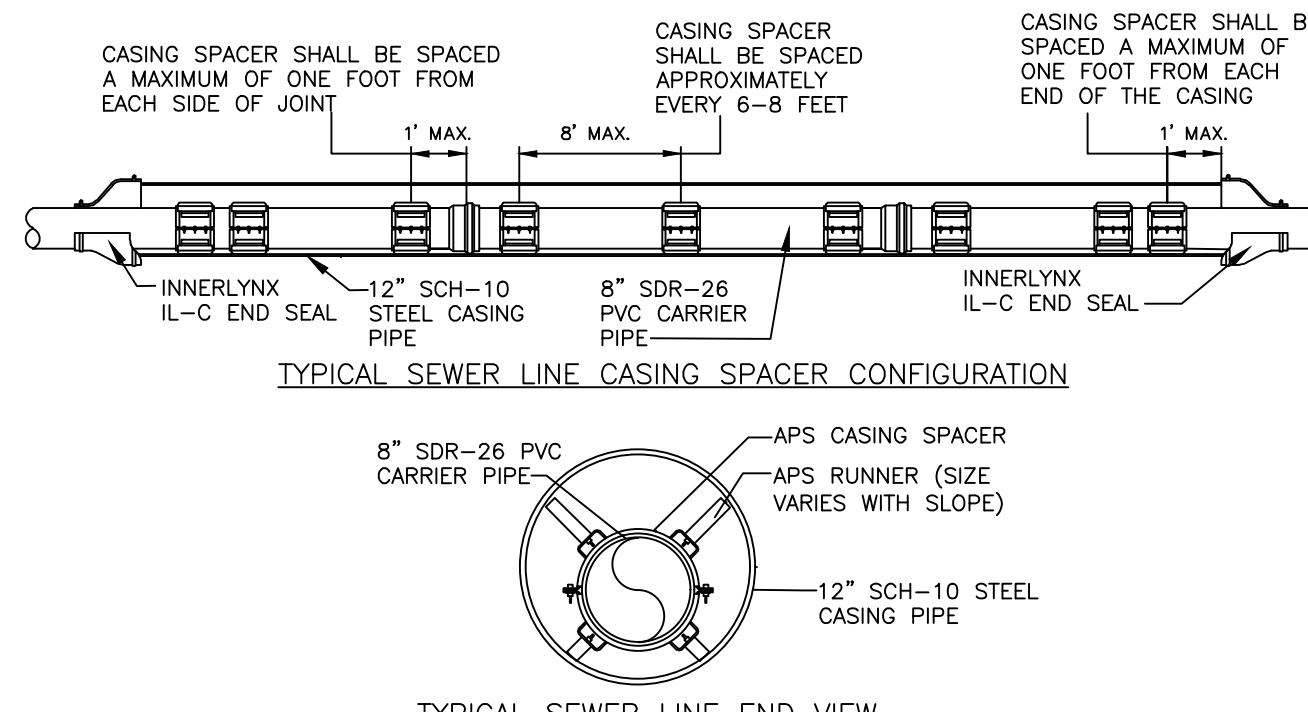
PRE-CAST CONCRETE SANITARY MANHOLE DETAIL
NOT TO SCALE



SANITARY SEWER MAIN TRENCH DETAIL
NOT TO SCALE



CLEANOUT DETAIL
NOT TO SCALE



SEWER LINE ENCASEMENT DETAIL
NOT TO SCALE

SEAL

ODENDORF, P.E.
NSE NO. 076245
KOEHLER, P.E.
NSE NO. 082716

Sheet 15 of 15

River Ridge Townhouses

Beacon, New York
Scale: As Noted
July 25, 2017

Surveyor:
TEC Land Surveying, P.C.
15C Tioronda Avenue
Beacon, New York 12508