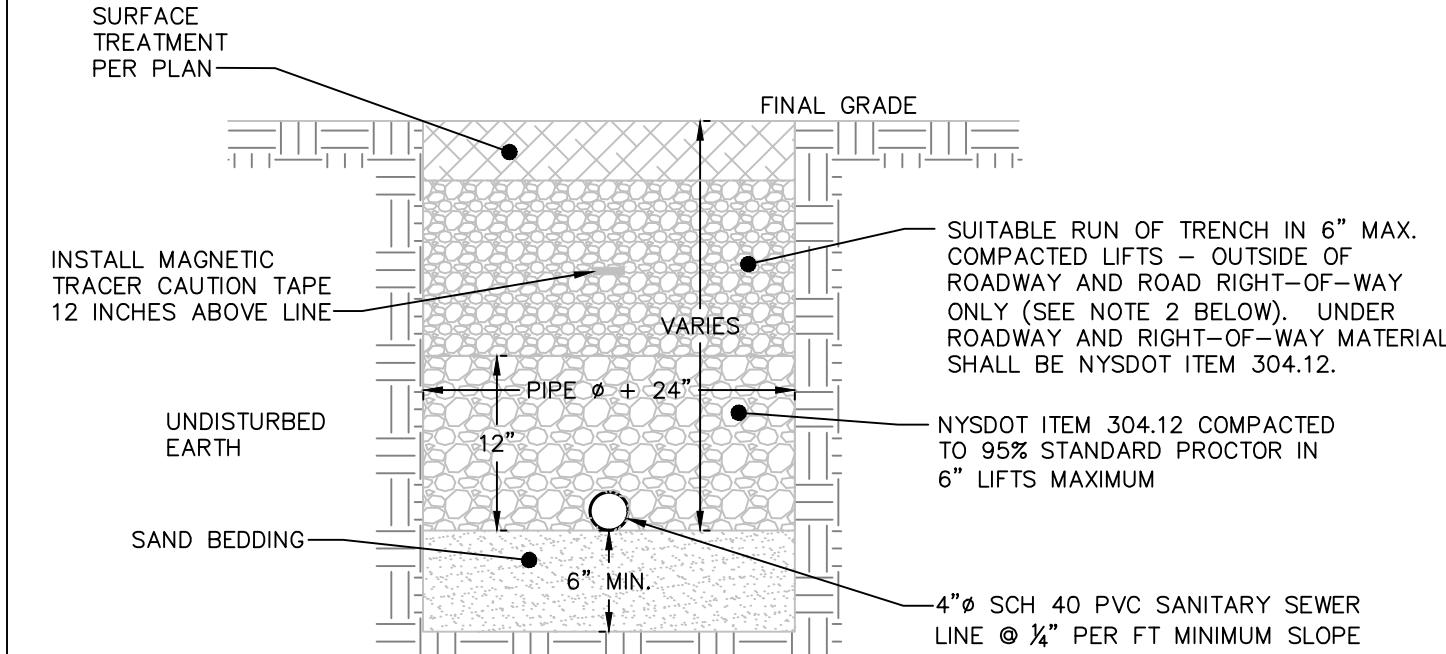


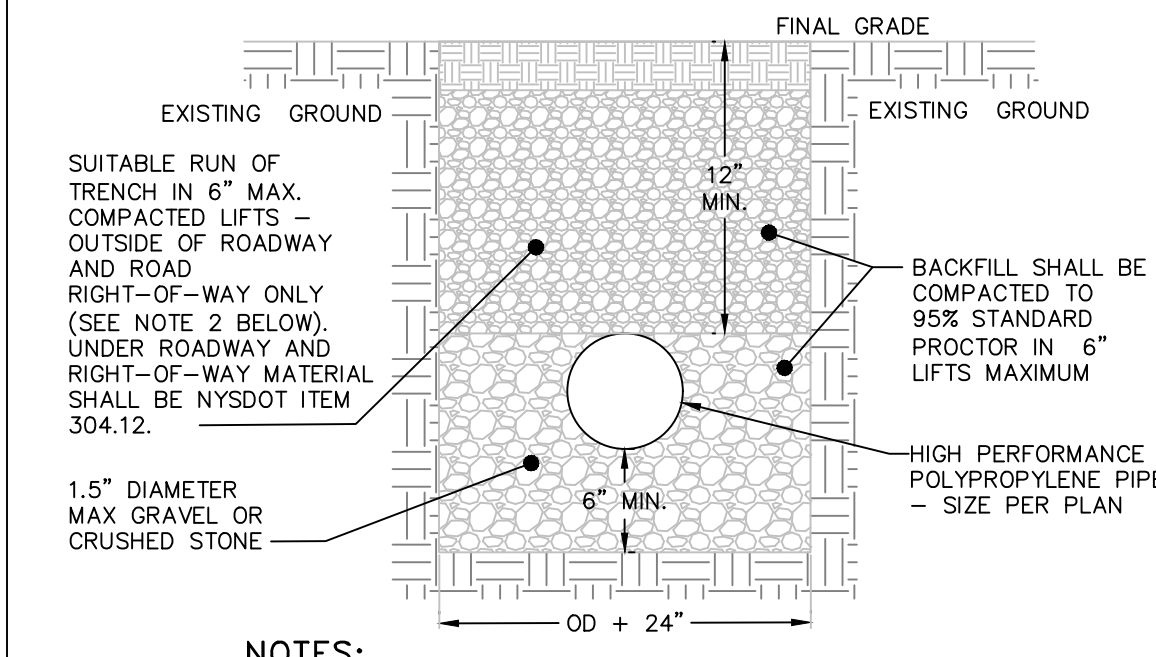
- NOTES:**
1. A MINIMUM 5' COVER SHALL BE PROVIDED ON THE WATER SERVICE LINE (CONDITIONED ON ACTUAL WATER MAIN DEPTH).
 2. CORPORATION STOP TO BE COMPRESSION TYPE BY MUELLER.
 3. WATER SERVICE LINE TO HAVE A "GOOSENECK" NEAR CORPORATION STOP.
 4. CORPORATION STOP TO BE INSTALLED IN THE UPPER HALF OF THE WATER MAIN AT AN ANGLE OF APPROXIMATELY 45° FROM HORIZONTAL.
 5. THE CONTRACTOR SHALL INSTALL A FULL BODIED STAINLESS STEEL TAPPING SLEEVE AT THE PROPOSED WATER SERVICE LOCATION.

WATER SERVICE CONNECTION DETAIL
NOT TO SCALE



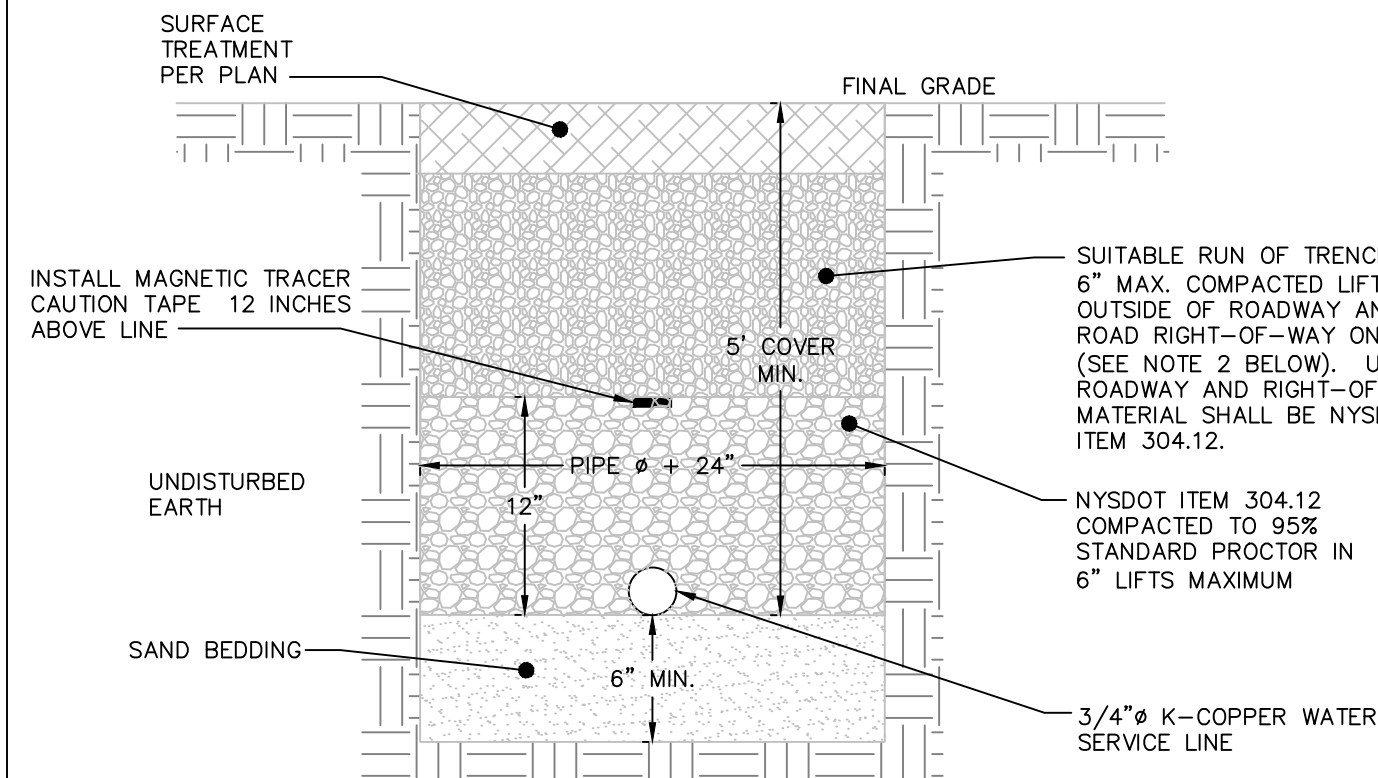
- NOTES:**
1. EXCAVATION AND TRENCHING SHALL MEET ALL OSHA REQUIREMENTS.
 2. SUITABLE RUN OF TRENCH SHALL NOT INCLUDE FROZEN MATERIALS, DEBRIS, ORGANIC MATERIALS, LARGE STONES OR OTHER UNSUITABLE MATERIALS. IF THE RUN OF TRENCH MATERIAL IS FOUND TO BE UNSUITABLE, A SUITABLE BACKFILL MATERIAL SHALL BE IMPORTED AND USED.

SANITARY SEWER SERVICE TRENCH DETAIL
NOT TO SCALE



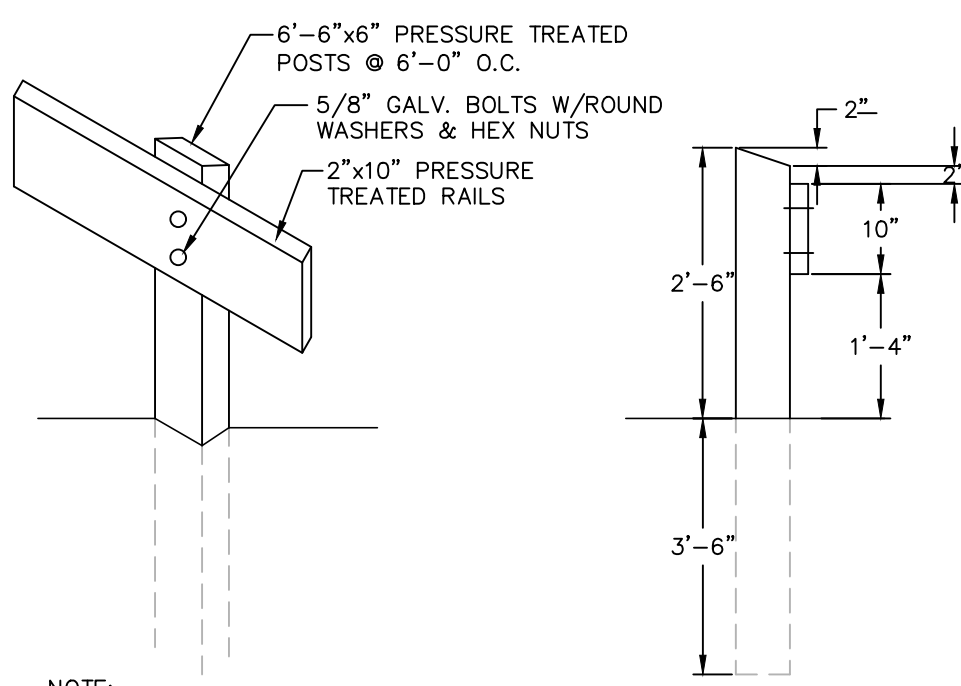
- NOTES:**
1. EXCAVATION AND TRENCHING SHALL MEET ALL OSHA REQUIREMENTS.

STORM LINE TRENCH DETAIL
NOT TO SCALE



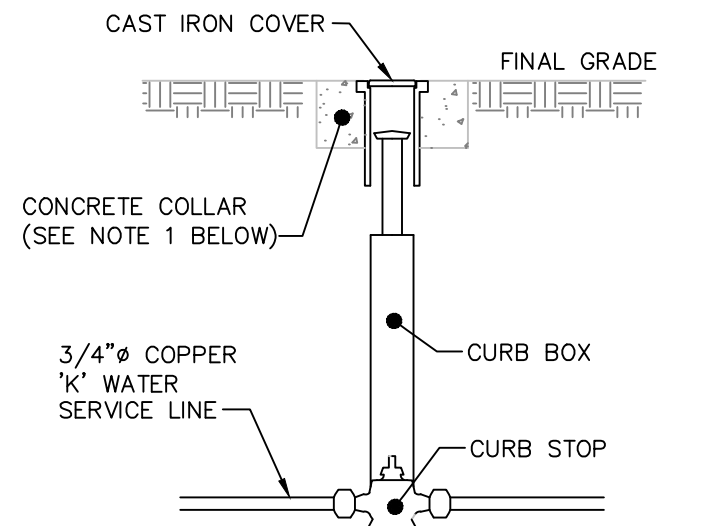
- NOTES:**
1. EXCAVATION AND TRENCHING SHALL MEET ALL OSHA REQUIREMENTS.
 2. SUITABLE RUN OF TRENCH SHALL NOT INCLUDE FROZEN MATERIALS, DEBRIS, ORGANIC MATERIALS, ENLARGED PARTICLES, LARGE STONES OR OTHER UNSUITABLE MATERIALS. IF THE RUN OF TRENCH MATERIAL IS FOUND TO BE UNSUITABLE, A SUITABLE BACKFILL MATERIAL SHALL BE IMPORTED AND USED.
 3. IN AREAS WHERE 5' COVER REQUIREMENT CANNOT BE MET, THE CONTRACTOR SHALL PROVIDE PIPE INSULATION TO PREVENT FREEZING.
 4. IF WATER SERVICE AND SEWER SERVICE LINE CROSSINGS ARE NEEDED, PROVIDE 18" OF VERTICAL SEPARATION

WATER SERVICE LINE TRENCH DETAIL
NOT TO SCALE



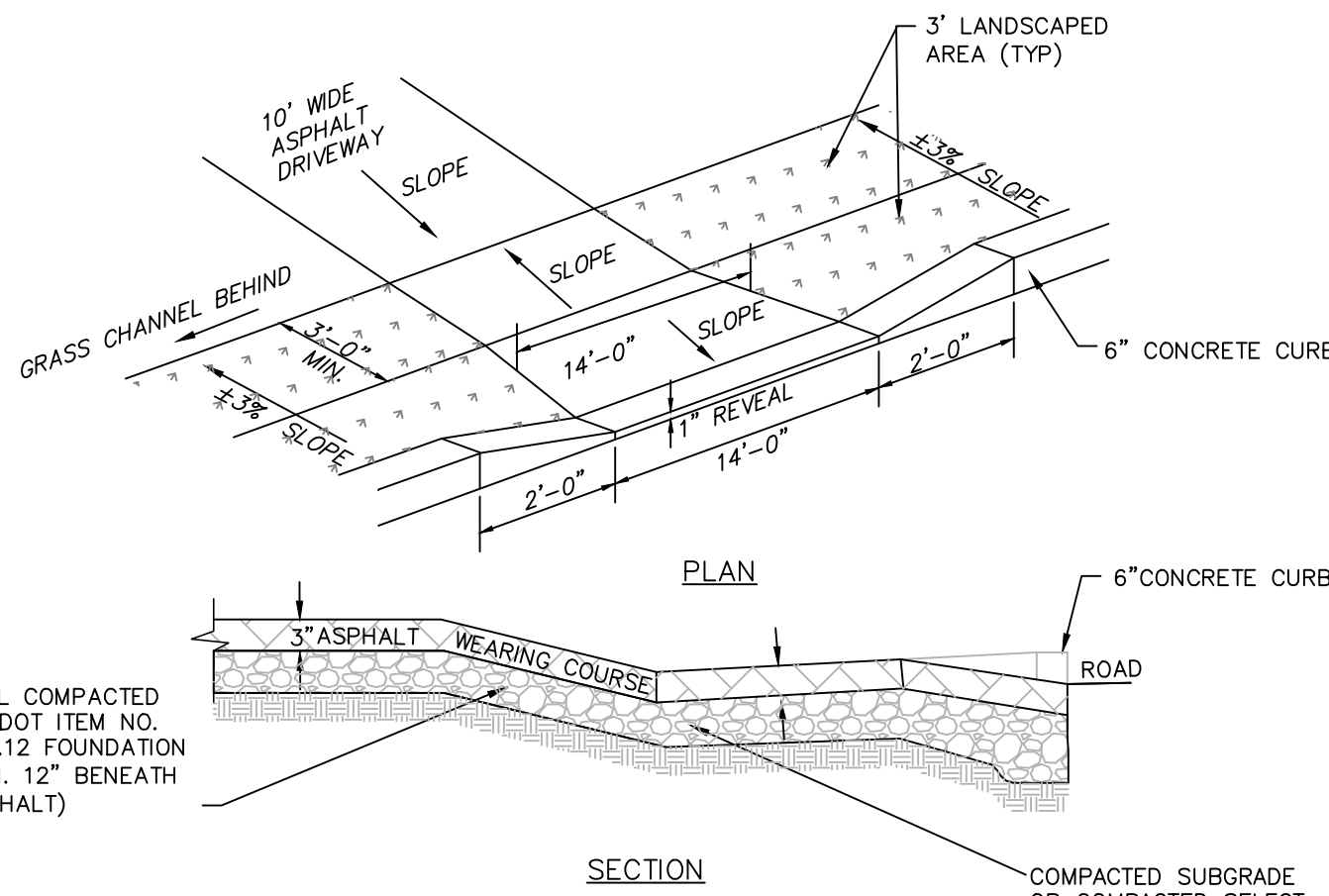
- NOTE:**
1. RAIL TO BE STAINED WITH AN EXTERIOR GRADE STAIN. COLOR TO MATCH BUILDING FACADES.

TIMBER GUIDERAIL DETAIL
NOT TO SCALE



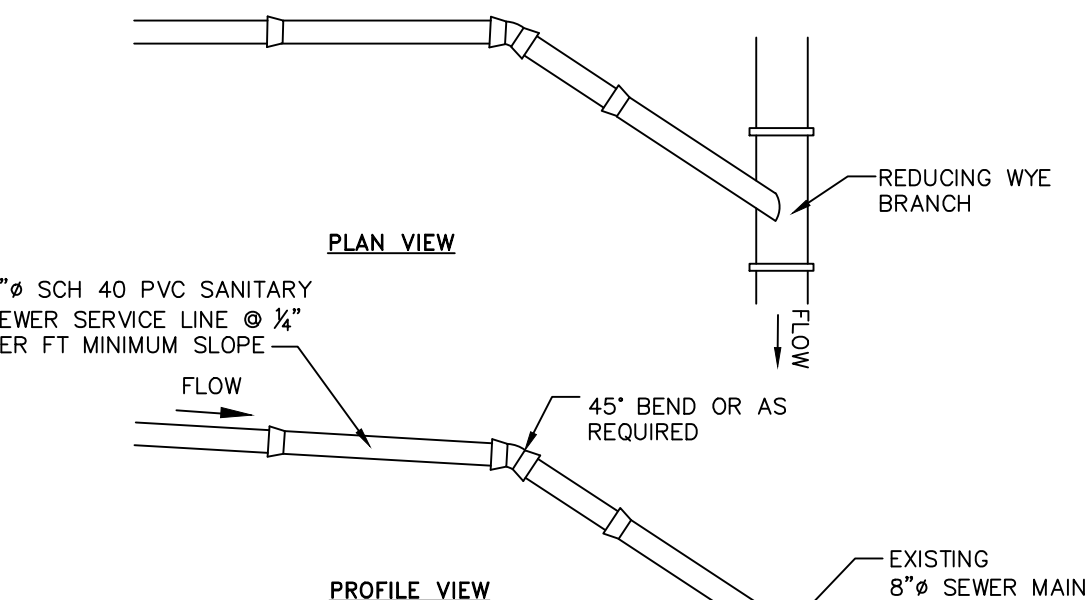
- NOTES:**
1. CONCRETE COLLAR TO BE PROVIDED IN AREAS THAT ARE NOT PAVED. THE COLLAR SHALL BE 6" FROM THE COVER AND SHALL EXTEND 6" BELOW FINAL GRADE.
 2. CURB STOP TO BE COMPRESSION TYPE BY MUELLER.
 3. AREA AROUND CURB BOX TO BE BACKFILLED WITH GRAVELLY MATERIAL.

WATER SHUT-OFF VALVE DETAIL
NOT TO SCALE



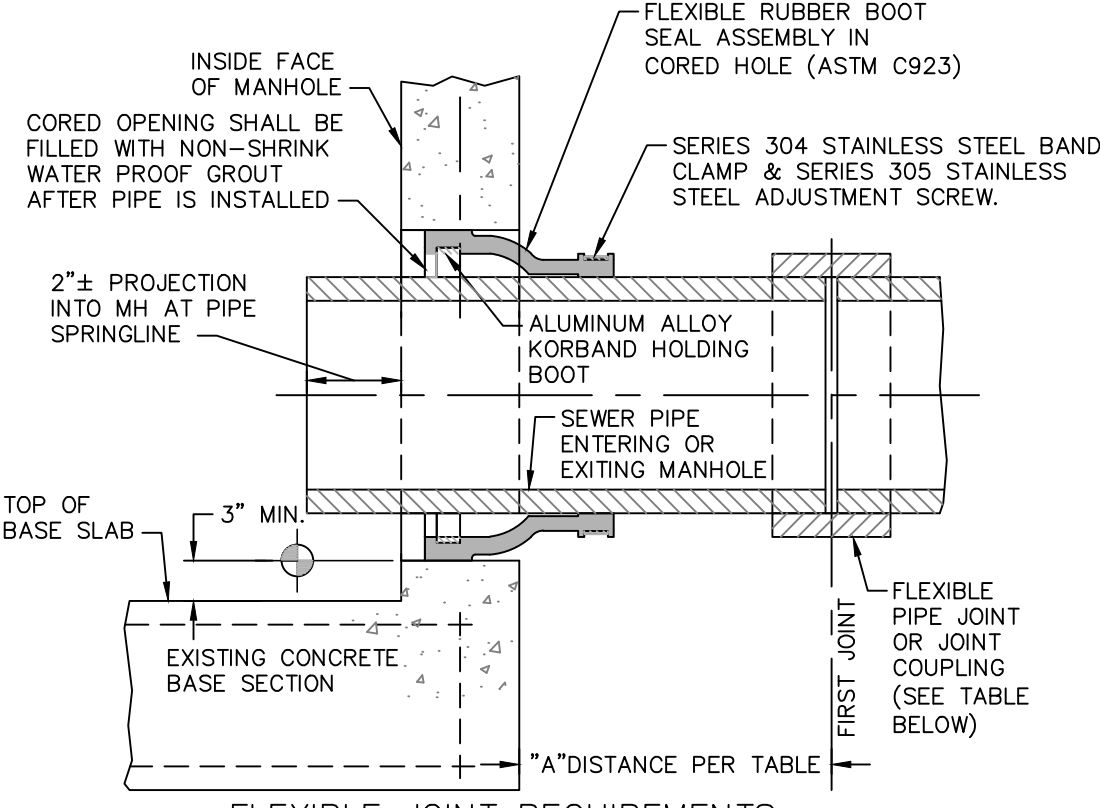
- NOTE:**
1. RESEED AND STABILIZE GRASS AREAS AFTER ASPHALT INSTALLATION.

DRIVEWAY ENTRANCE DETAIL
NOT TO SCALE



- NOTES:**
1. EXCAVATION AND TRENCHING SHALL MEET ALL OSHA REQUIREMENTS.
 2. SUITABLE RUN OF TRENCH SHALL NOT INCLUDE FROZEN MATERIALS, DEBRIS, ORGANIC MATERIALS, LARGE STONES OR OTHER UNSUITABLE MATERIALS. IF THE RUN OF TRENCH MATERIAL IS FOUND TO BE UNSUITABLE, A SUITABLE BACKFILL MATERIAL SHALL BE IMPORTED AND USED.
 3. TAPPING SADDLE FOR CONNECTION OF THE PROPOSED SERVICE LINE TO THE EXISTING SEWER MAIN TO BE A 4" PREDCO HUB TAP SADDLE – MODEL #HTS4/E.

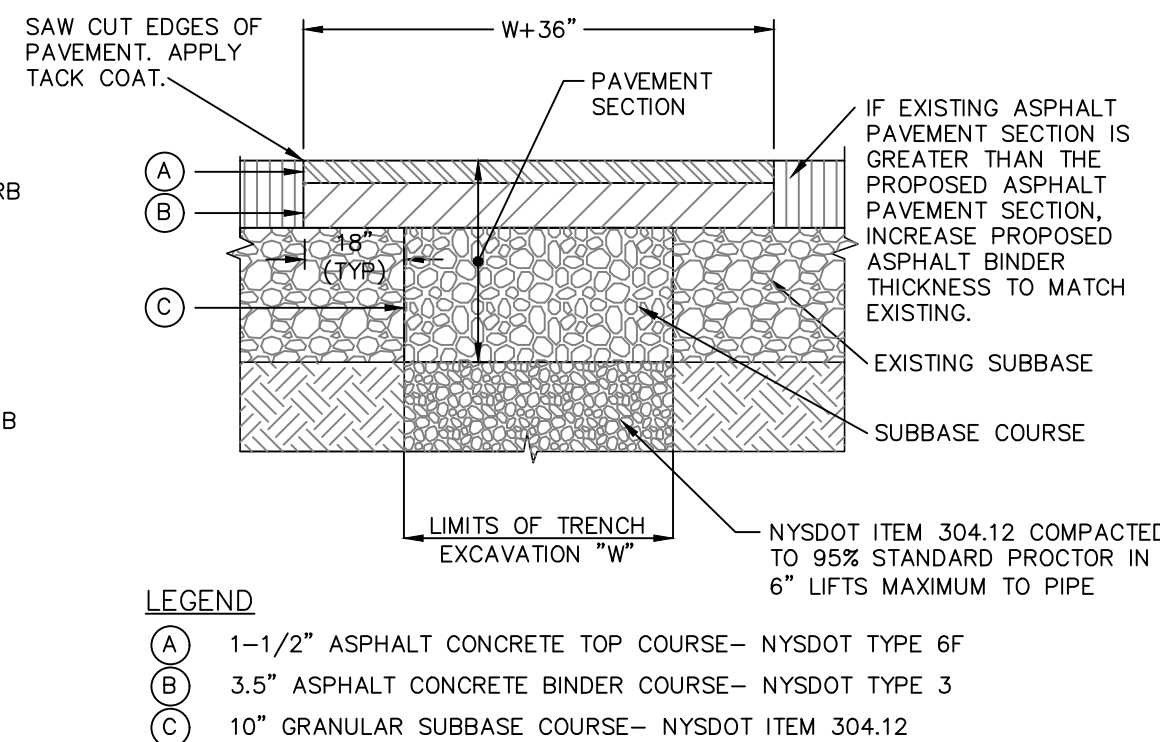
SANITARY SEWER SERVICE CONNECTION DETAIL
NOT TO SCALE



SEWER PIPE TYPE	FLEXIBLE JOINT TYPE IN & OUT	"A" DISTANCE (FEET)
DUCTILE IRON	STD RUBBER GASKET PIPE JOINT ONLY	10' MAX
PVC	STD RUBBER GASKET PIPE JOINT ONLY	3' MAX

- NOTE:**
- REFERENCE MANHOLE DETAIL(S) FOR REQUIRED INVERT CHANNEL CONFIGURATION.

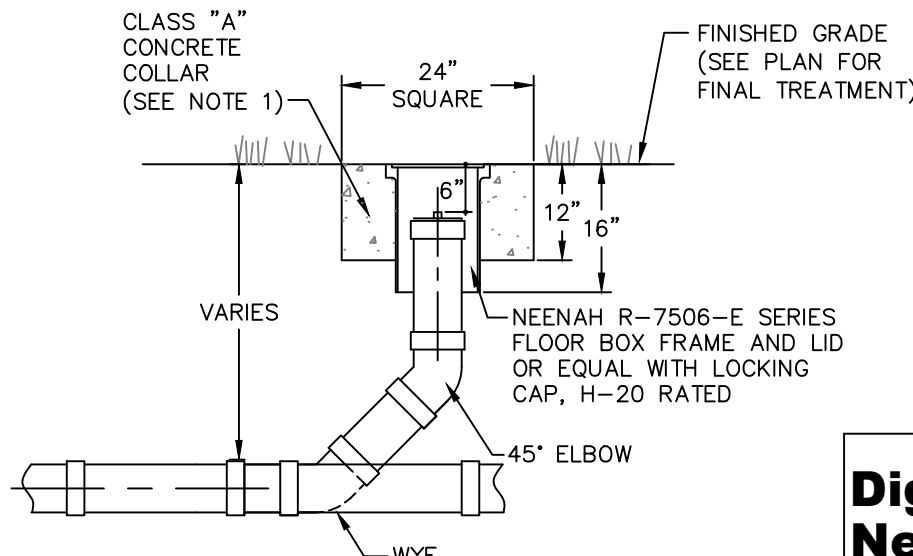
CORED HOLE AND INSERTED BOOT DETAIL
NOT TO SCALE



- LEGEND**
- 1-1/2" ASPHALT CONCRETE TOP COURSE – NYSDOT TYPE 6F
 - 3.5" ASPHALT CONCRETE BINDER COURSE – NYSDOT TYPE 3
 - 10" GRANULAR SUBBASE COURSE – NYSDOT ITEM 304.12

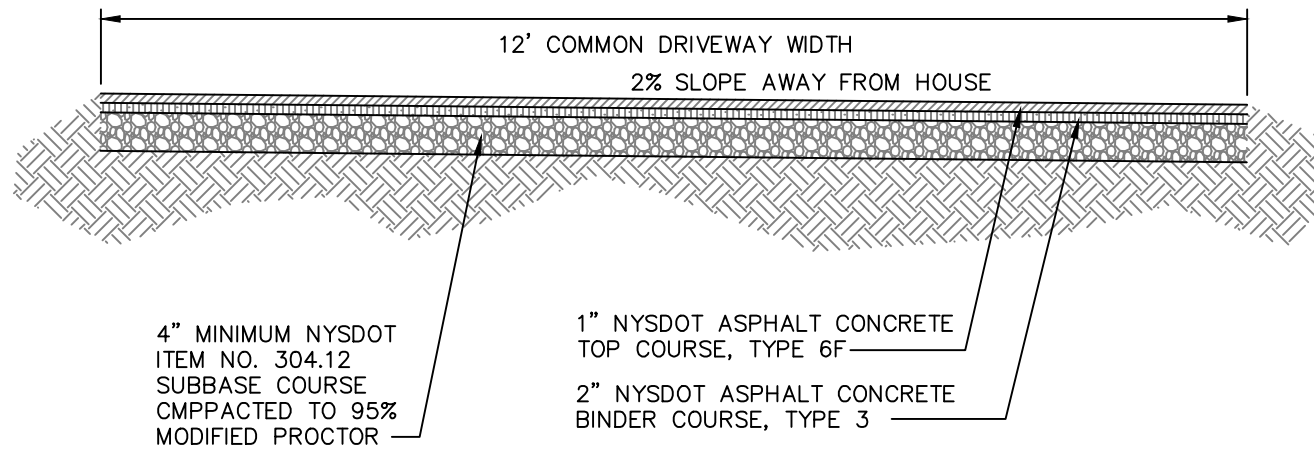
- NOTES:**
1. SAW CUT MIN. 18" BEYOND EXCAVATION WITH SMOOTH EDGES. 18" JOINT BETWEEN EXISTING AND NEW TOP COURSE TO BE MILLED. JOINT TO BE SEALED WITH POLYMER MODIFIED SEALER.
 2. FURNISH, PLACE, AND COMPACT SUBBASE.
 3. TACK COAT IN ACCORDANCE WITH NYSDOT STANDARD SPEC.
 4. FURNISH AND PLACE ASPHALT CONCRETE PAVEMENT AS SPECIFIED.

PAVEMENT RESTORATION DETAIL
NOT TO SCALE

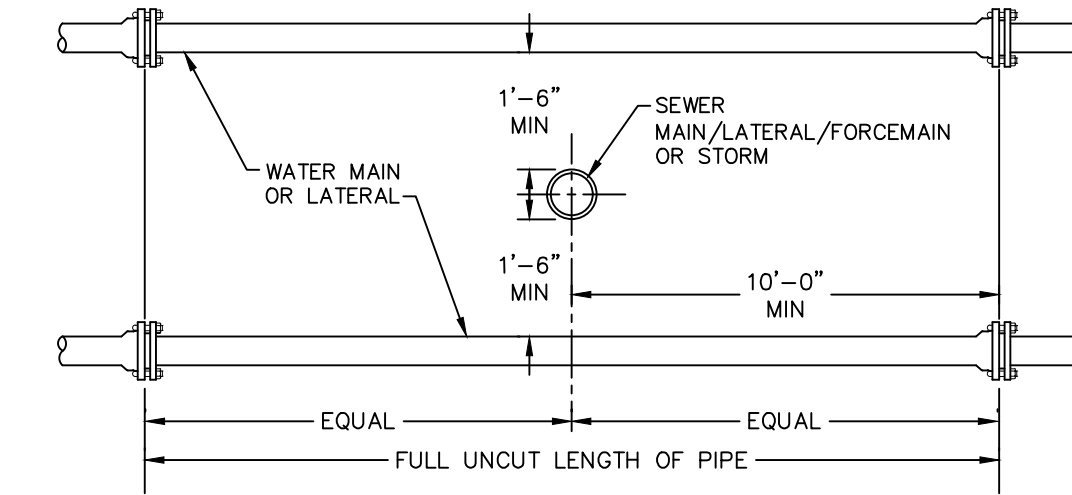


- NOTES:**
1. CONCRETE COLLAR TO BE PROVIDED IN AREAS THAT ARE NOT PAVED. THE COLLAR SHALL BE 6" FROM THE COVER AND SHALL EXTEND 6" BELOW FINAL GRADE.

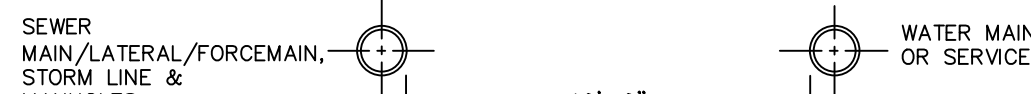
CLEANOUT DETAIL
NOT TO SCALE



PAVED COMMON DRIVEWAY SECTION DETAIL
NOT TO SCALE



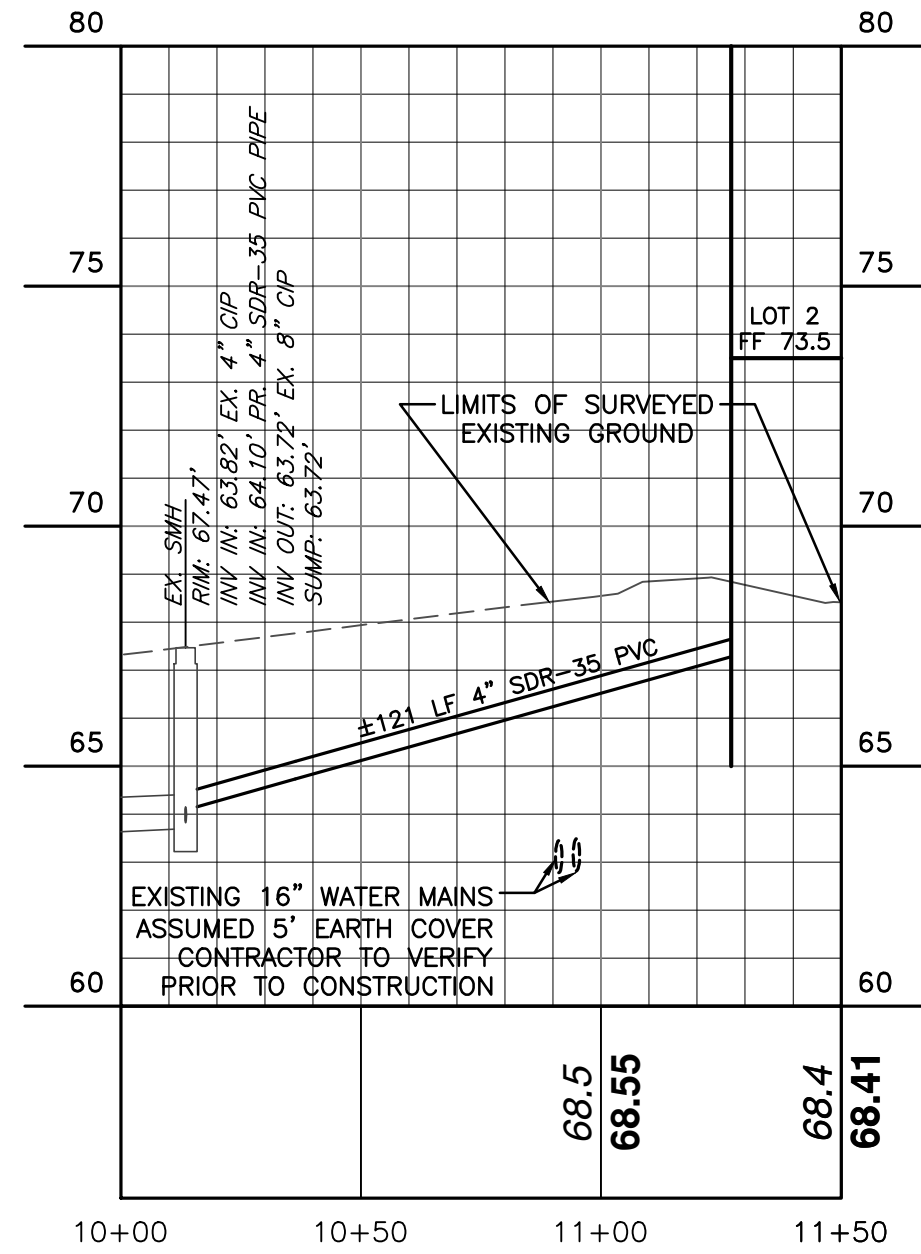
VERTICAL SEPARATION



HORIZONTAL SEPARATION

- NOTE:**
1. NO DEVIATION IN THE SEPARATION REQUIREMENTS WILL BE PERMITTED WITHOUT THE EXPRESS APPROVAL OF THE DUTCHESS COUNTY DEPARTMENT OF HEALTH AND THE CITY OF BEACON. CONCRETE ENCASUREMENT OF WATERLINE OR OFFSETTING OF WATERLINE SHALL BE REQUIRED WHERE SEPARATION DISTANCES CANNOT BE MAINTAINED.

WATER LINE SEPARATION DETAIL
NOT TO SCALE

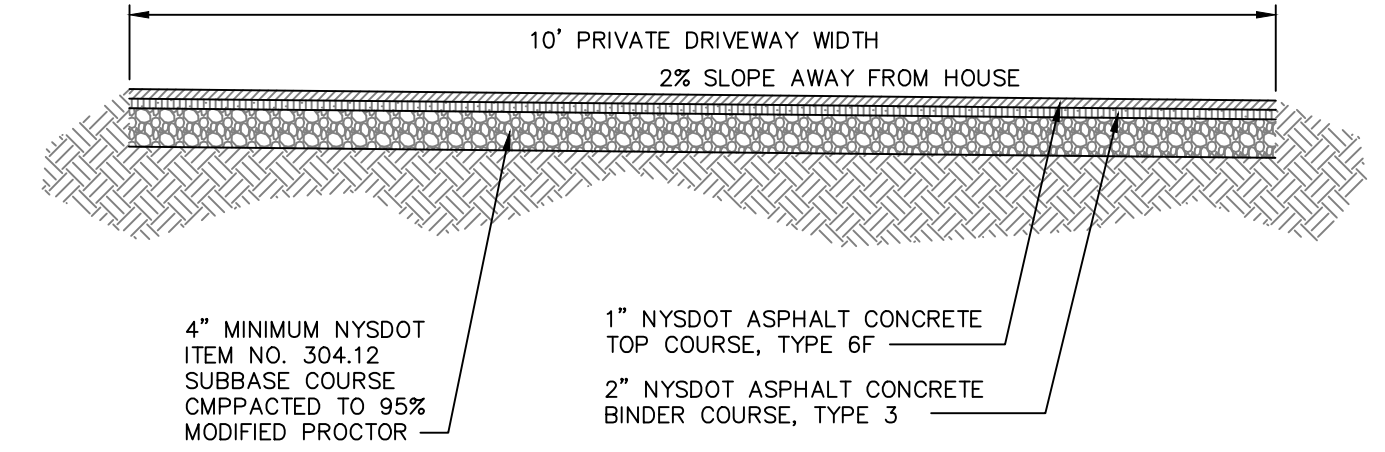


LOT 2: SEWER SERVICE LATERAL PROFILE
1:40 H
1:4 V

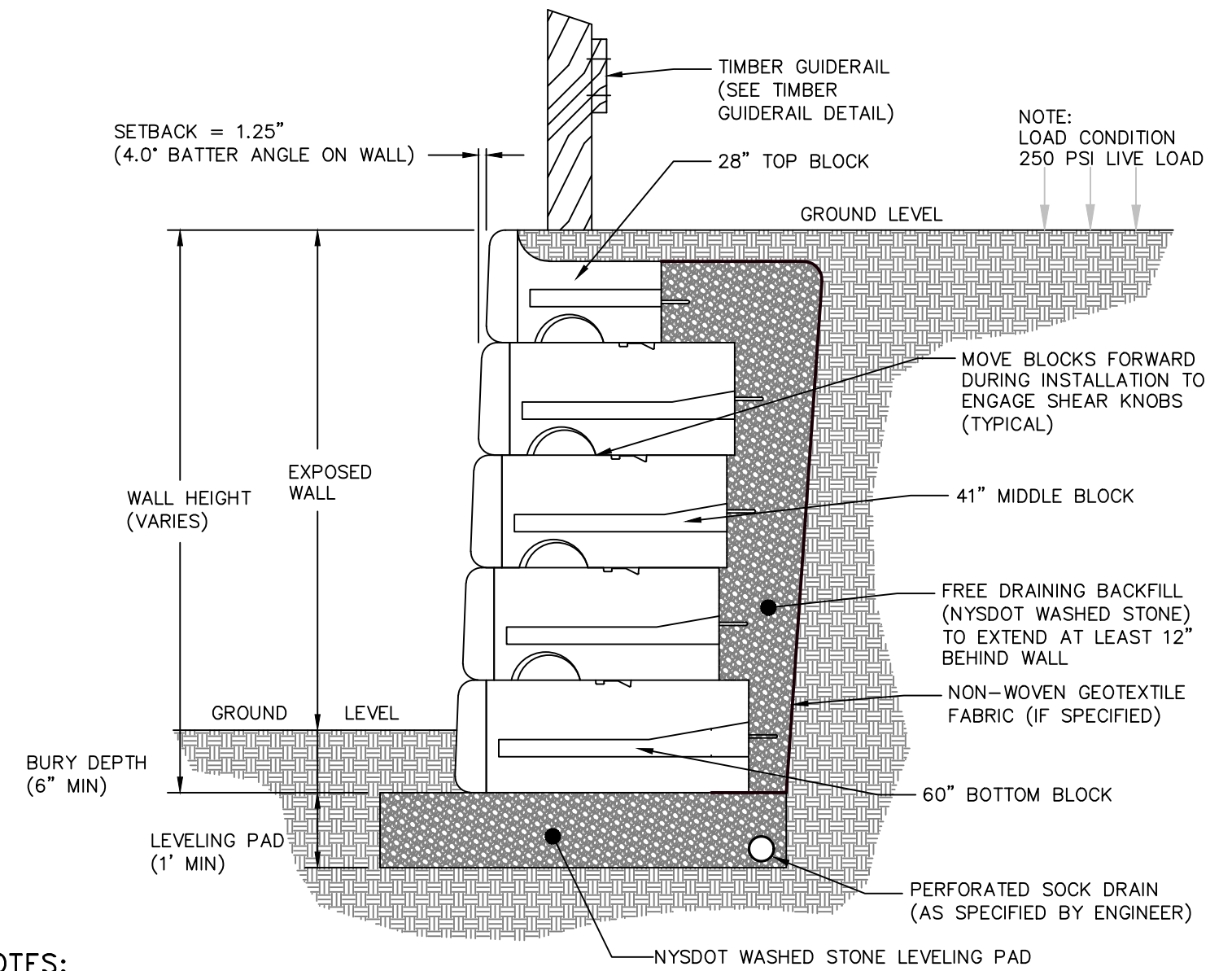
NO.	DATE	DESCRIPTION	BY
1	01/30/18	REVISED LAYOUT PER UPDATED SURVEY	AG
2	02/27/18	REVISED PER CONSULTANT COMMENTS	AG

Dig Safely.
New York
800-962-7962
www.digsafelynewyork.org

☐ Call Before You Dig
☐ Wait The Required Time
☐ Confirm Utility Response
☐ Respect the Marks
☐ Dig With Care



PAVED DRIVEWAY FOR LOT 2 SECTION DETAIL
NOT TO SCALE



- NOTES:**
1. RETAINING WALL MANUFACTURED BY REDI-ROCK OR APPROVED EQUAL.
 2. MANUFACTURER TO PROVIDE FINAL ENGINEERING CALCULATIONS AND DETAILS TO THE OWNER FOR REVIEW BY THE OWNERS ENGINEER.
 3. SEE MANUFACTURER'S DETAILS AND INSTALLATION GUIDELINES FOR FURTHER REQUIREMENTS.

TYPICAL REDI-ROCK GRAVITY WALL WITH 41" BLOCKS
NOT TO SCALE

APPROVED BY RESOLUTION OF THE PLANNING BOARD OF THE CITY OF BEACON, NEW YORK, ON THE _____ DAY OF _____, 20____, SUBJECT TO ALL REQUIREMENTS AND CONDITIONS OF SAID RESOLUTION, ANY CHANGE, ERASURE, MODIFICATION OR REVISION OF THIS PLAT, AS APPROVED, SHALL VOID THIS APPROVAL.

SIGNED THIS _____ DAY OF _____, 20____, BY _____

_____ CHAIRMAN

_____ SECRETARY

IN ABSENCE OF THE CHAIRMAN OR SECRETARY, THE ACTING CHAIRMAN OR ACTING SECRETARY RESPECTIVELY MAY SIGN IN THIS PLACE.

DETAILS FAIRVIEW SUBDIVISION

446 WASHINGTON AVE
CITY OF BEACON
DUTCHESS COUNTY, NEW YORK
TAX ID: 6055-82-656107 & 6055-82-645105
SCALE: 1" = 20'
DECEMBER 26, 2017

**HUDSON
LAND DESIGN**

HUDSON LAND DESIGN
PROFESSIONAL ENGINEERING P.C.

174 MAIN STREET
BEACON, NEW YORK 12508
PH: 845-440-6926 F: 845-440-6637



JON D. BODENDORF, P.E.
NYS LICENSE NO. 076245
DANIEL G. KOEHLER, P.E.
NYS LICENSE NO. 082716

SHEET: 4 OF 4