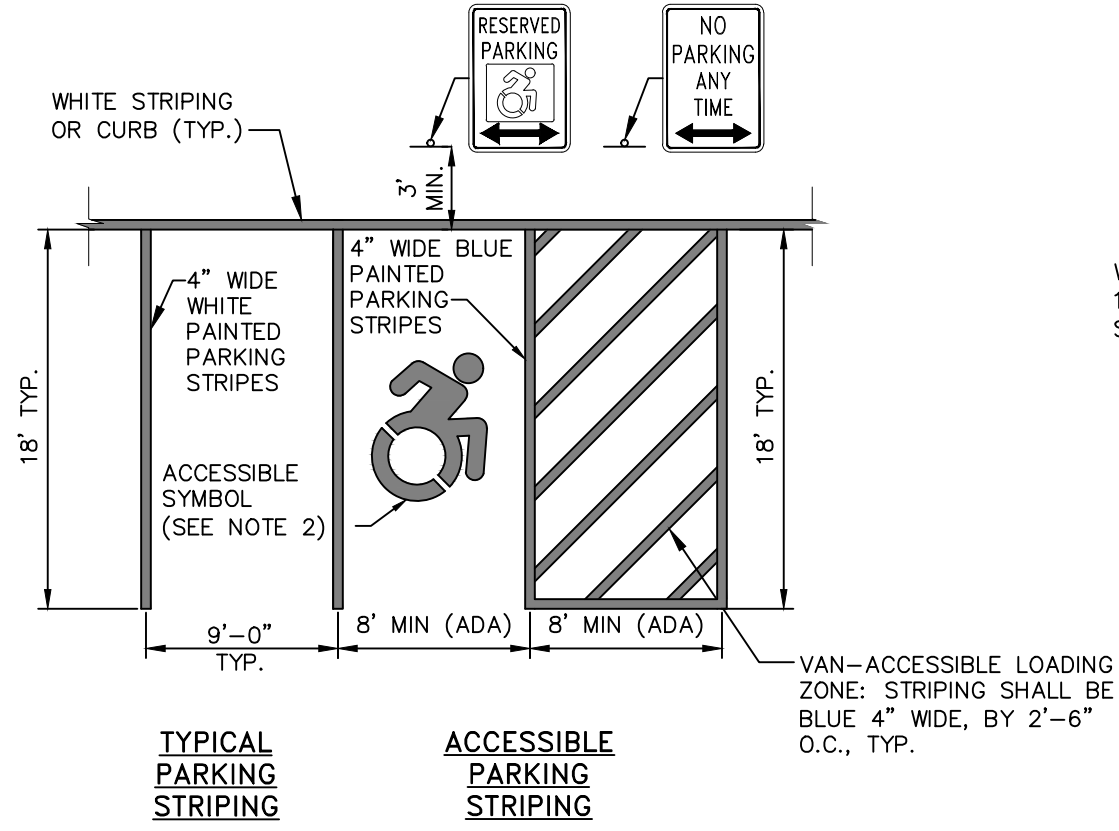
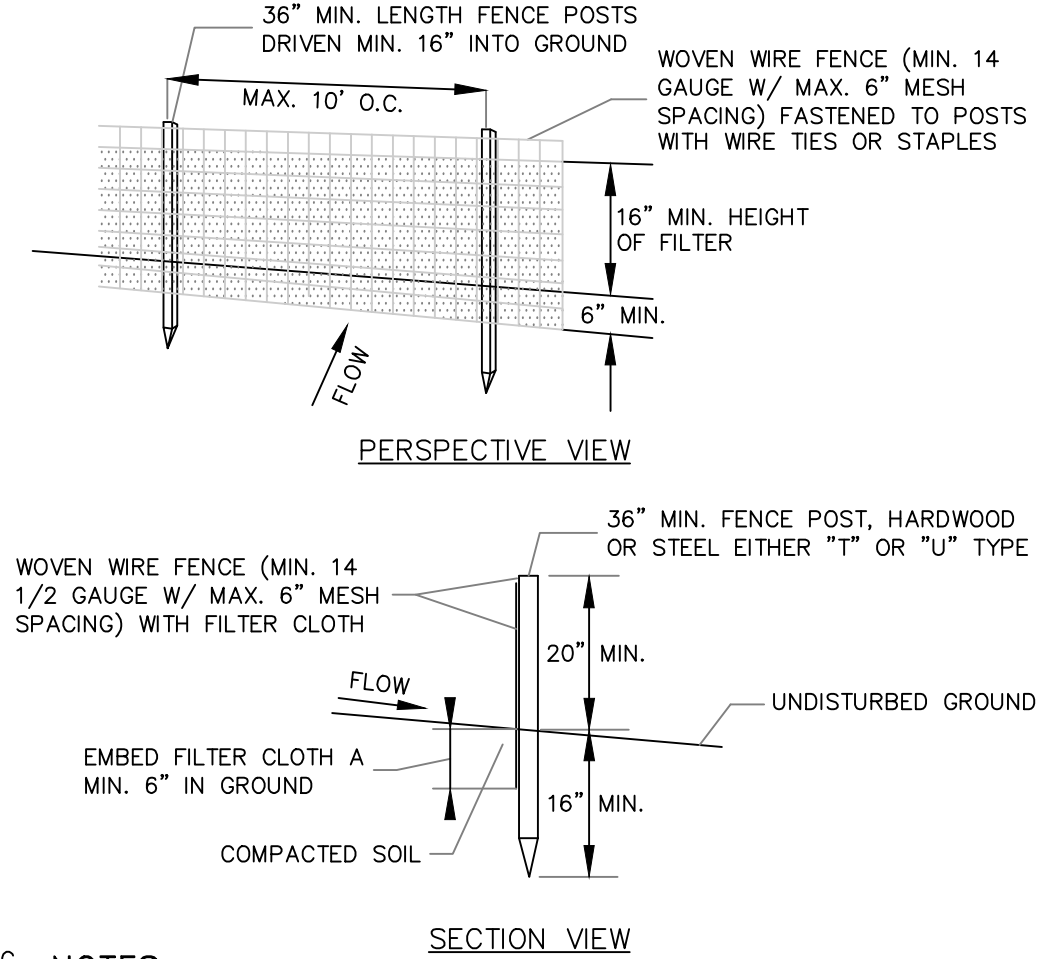


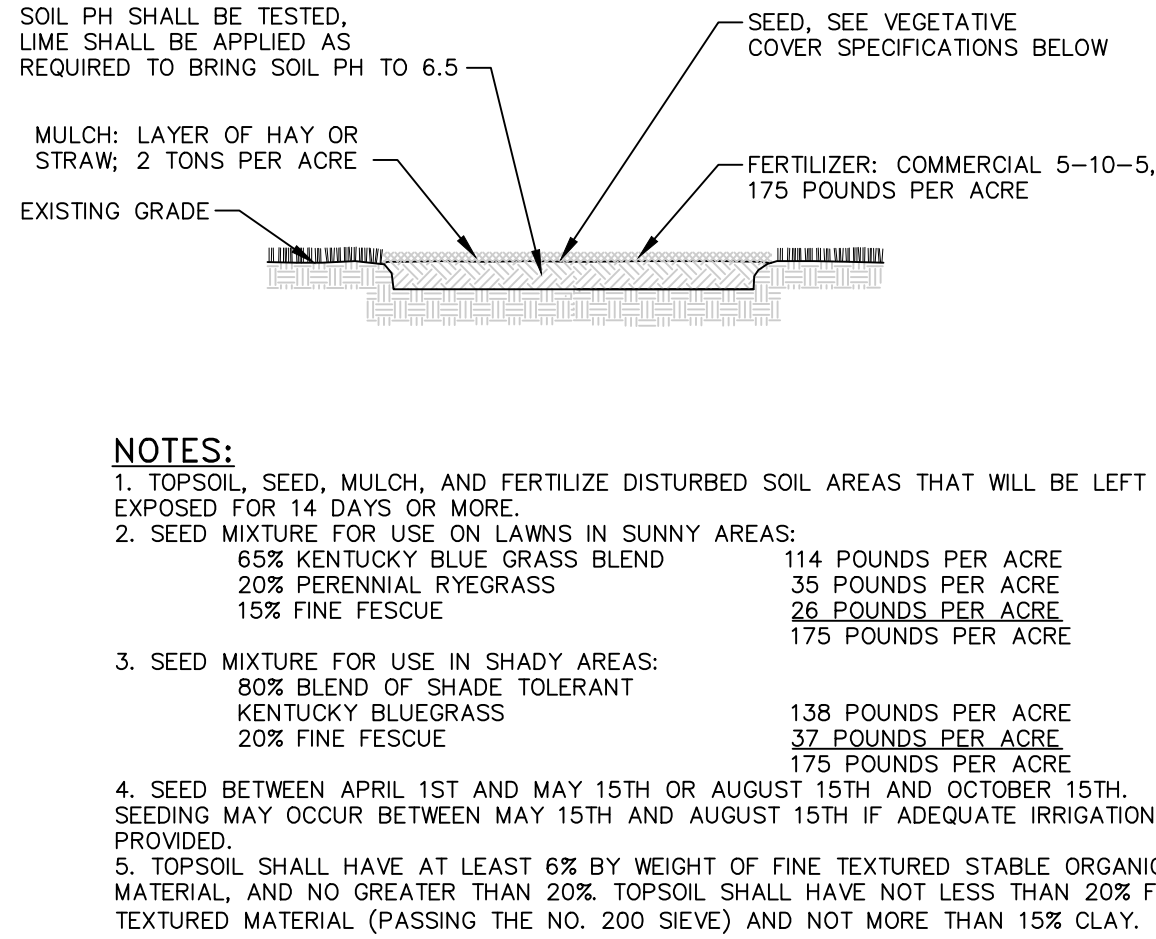
PAVEMENT SECTION DETAIL  
NOT TO SCALE



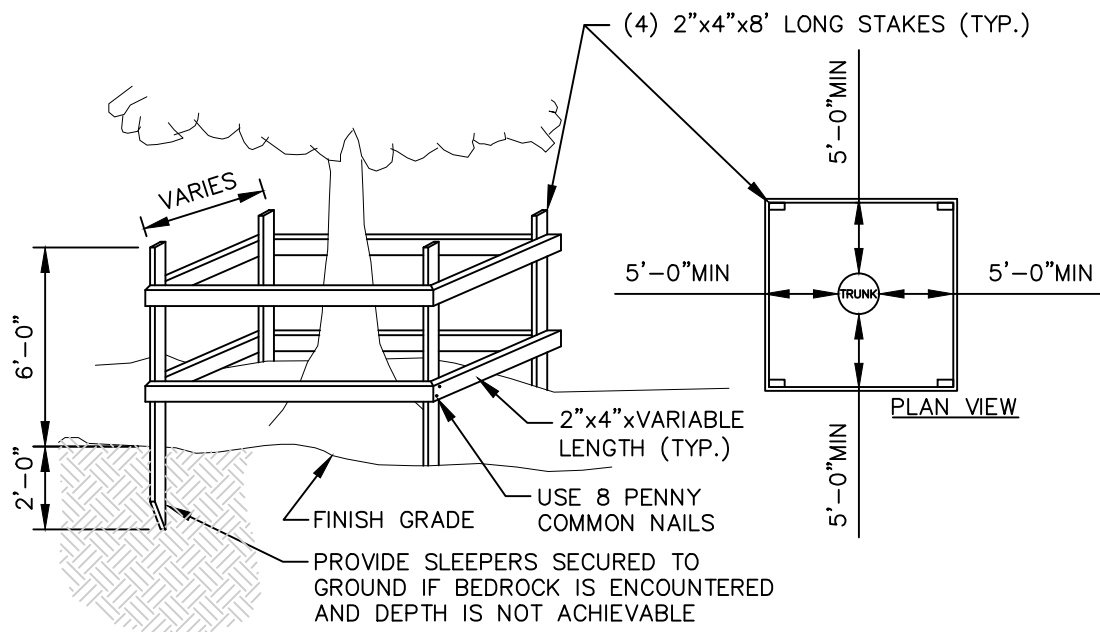
PARKING AND STRIPING DETAIL  
NOT TO SCALE



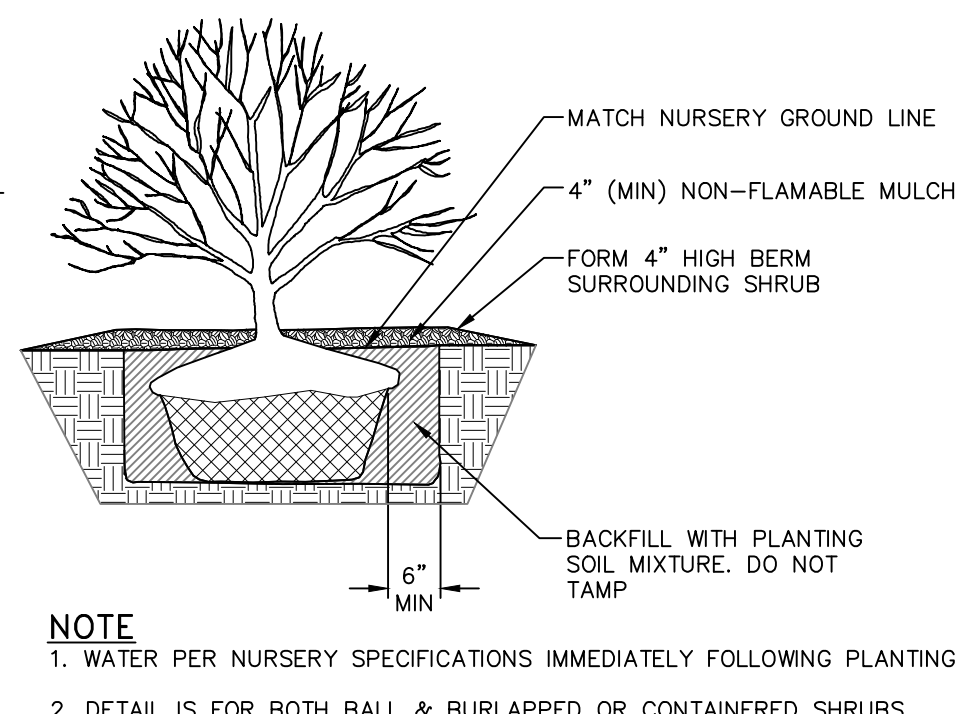
SILT FENCE DETAIL  
NOT TO SCALE



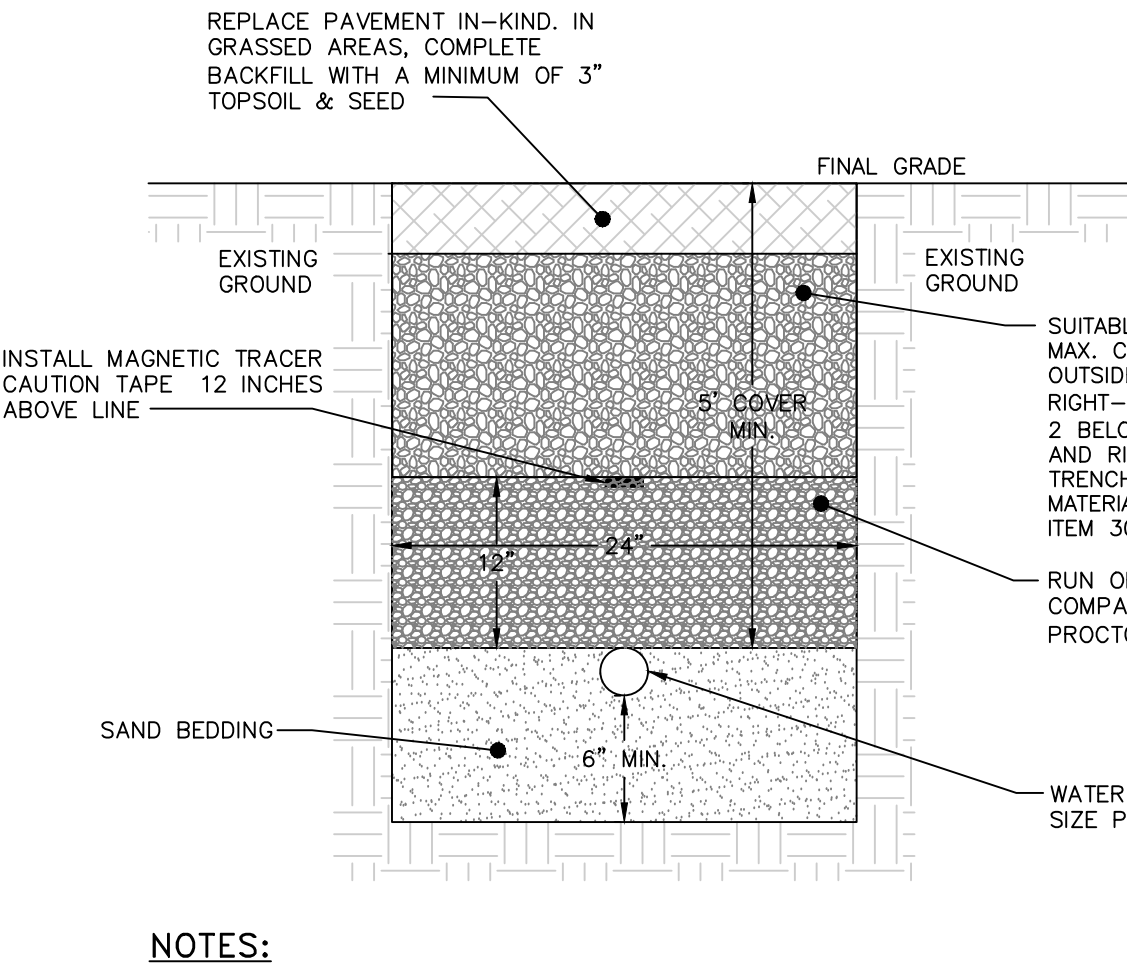
TOPSOIL, SEED AND MULCH DETAIL  
NOT TO SCALE



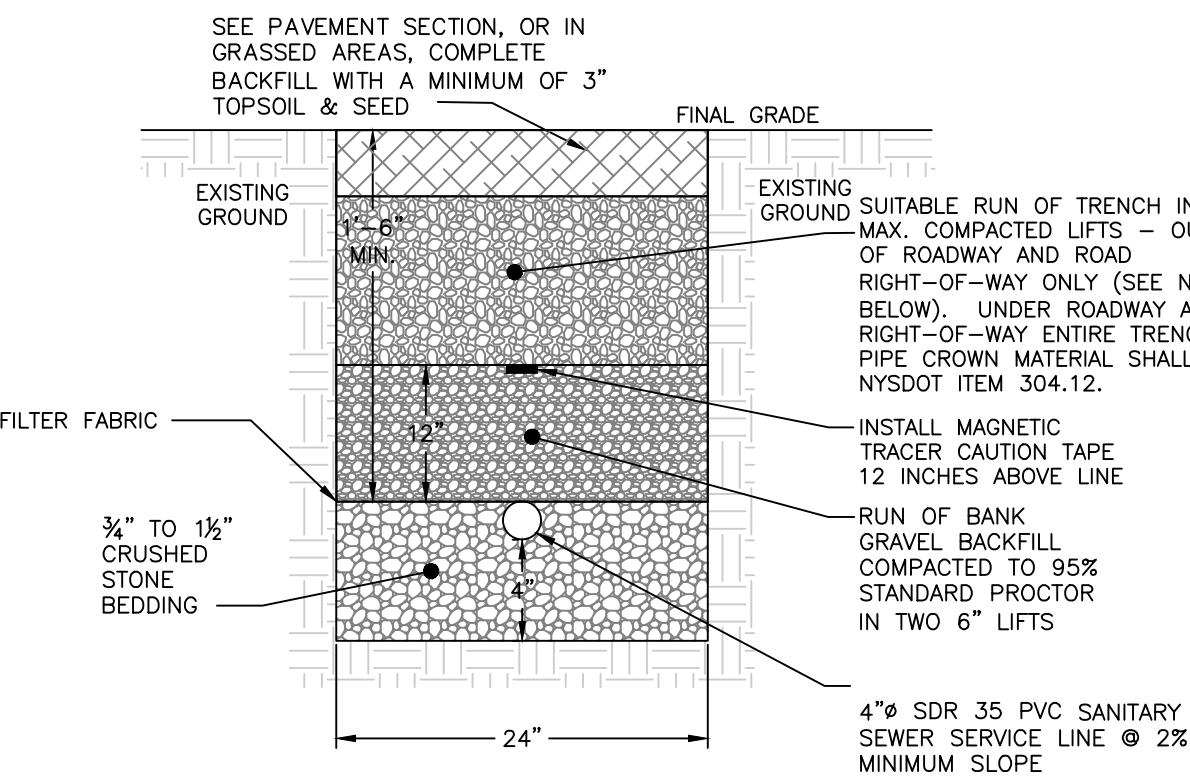
TEMPORARY TREE PROTECTION DETAIL  
NOT TO SCALE



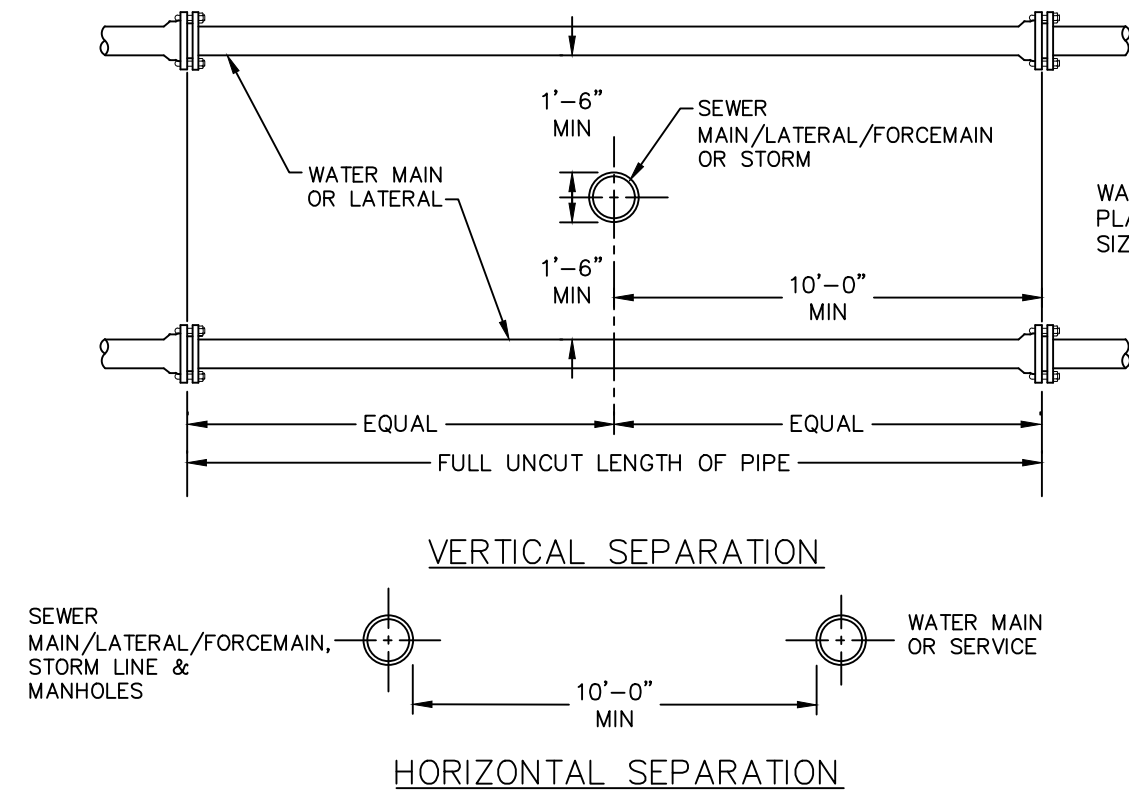
SHRUB PLANTING DETAIL  
NOT TO SCALE



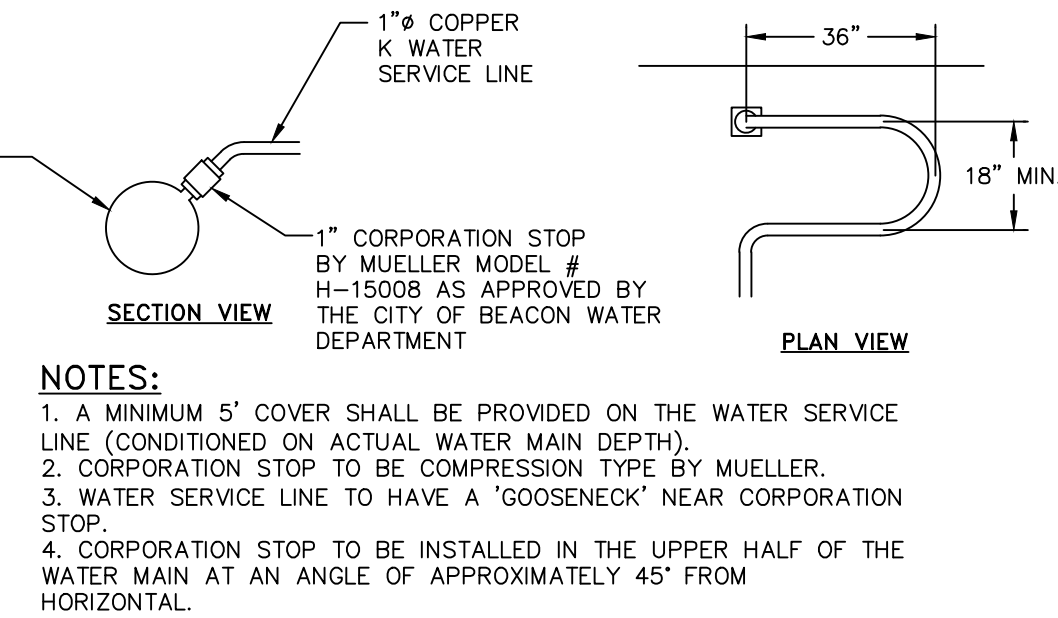
WATER SERVICE LINE TRENCH DETAIL  
NOT TO SCALE



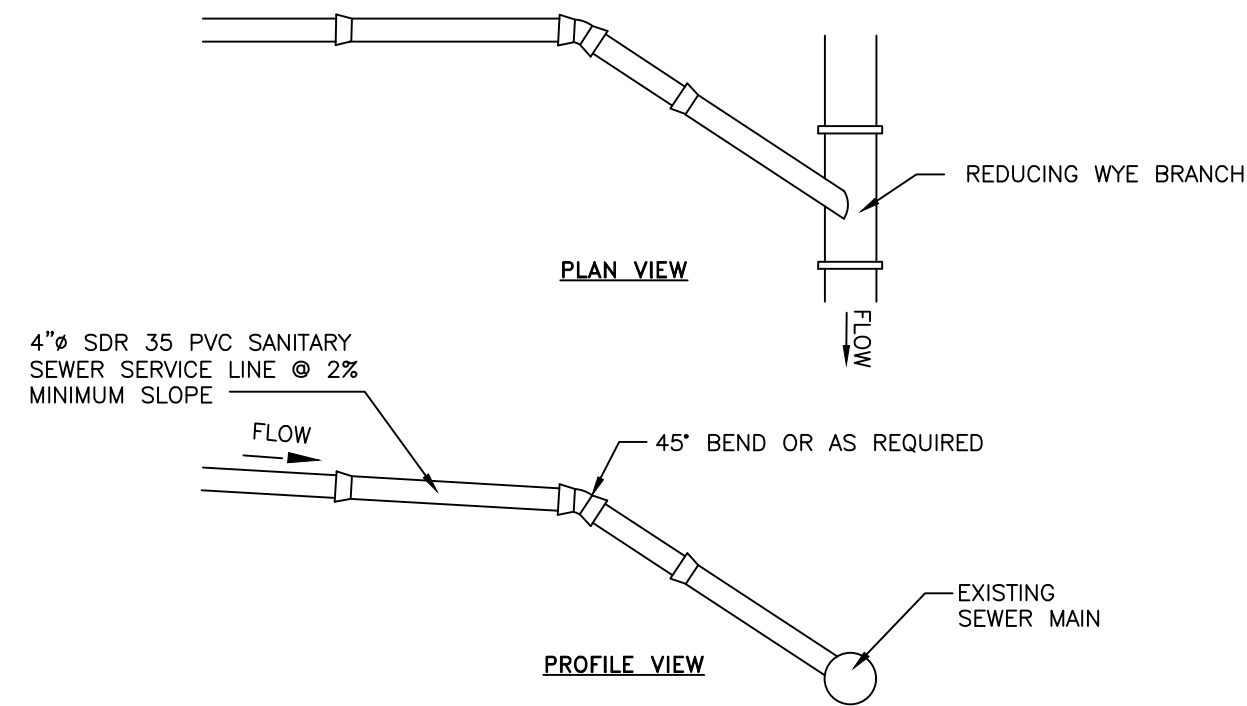
SANITARY SEWER SERVICE LINE TRENCH DETAIL  
NOT TO SCALE



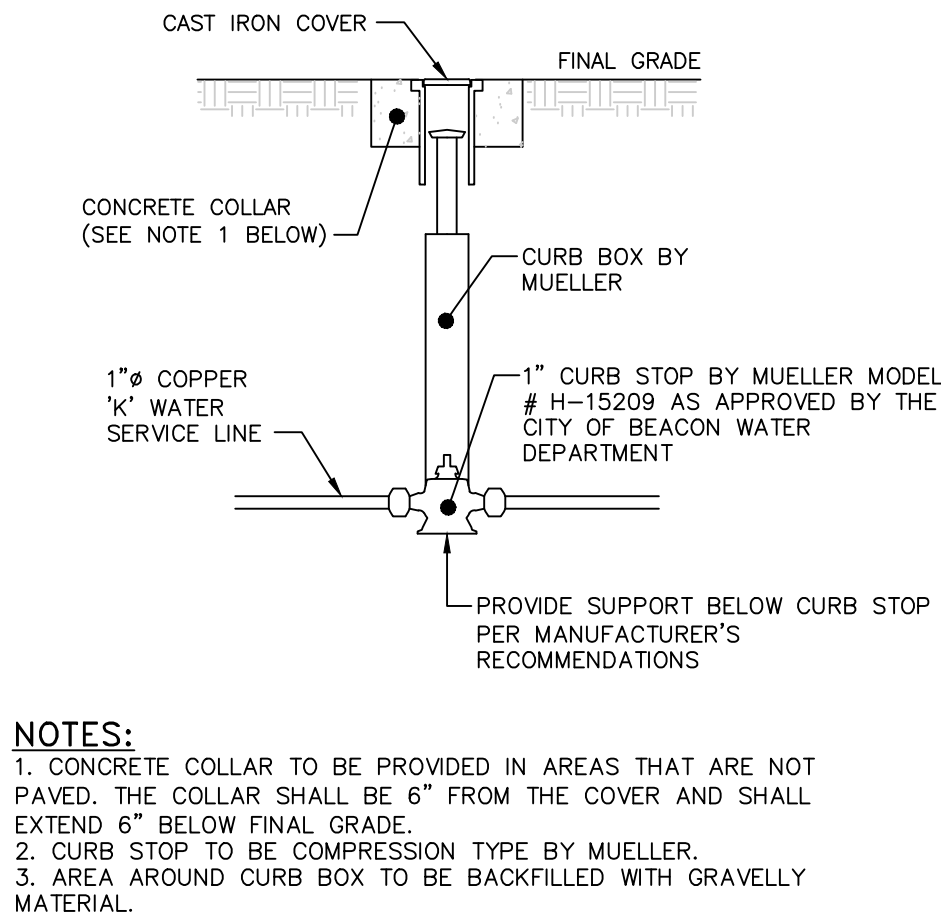
WATER LINE SEPARATION DETAIL  
NOT TO SCALE



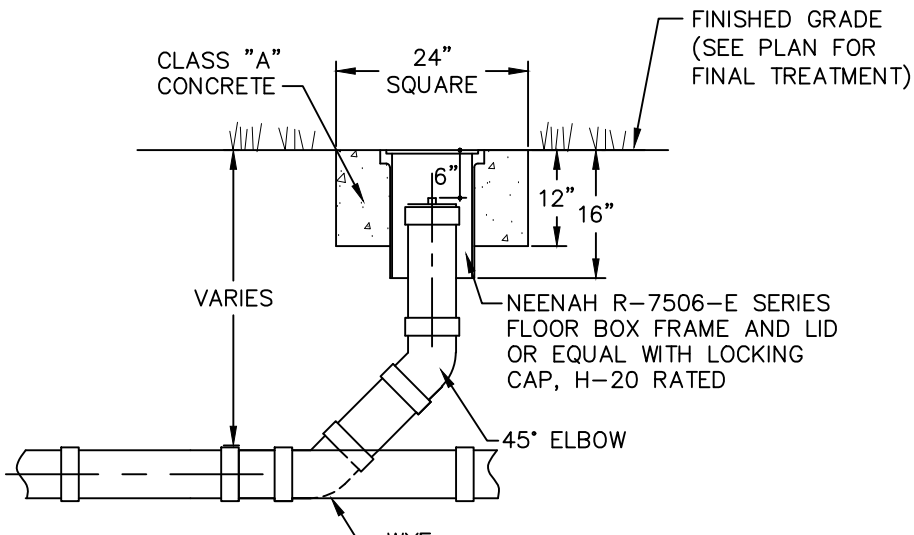
WATER SERVICE CONNECTION DETAIL  
NOT TO SCALE



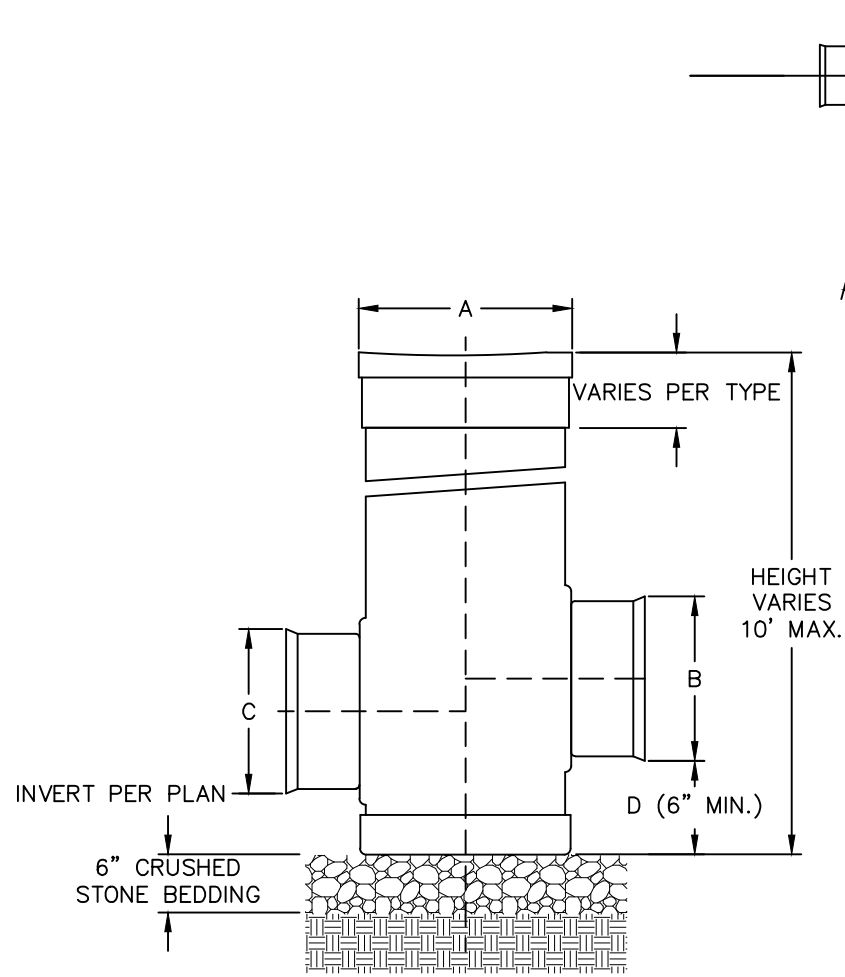
SANITARY SEWER SERVICE CONNECTION DETAIL  
NOT TO SCALE



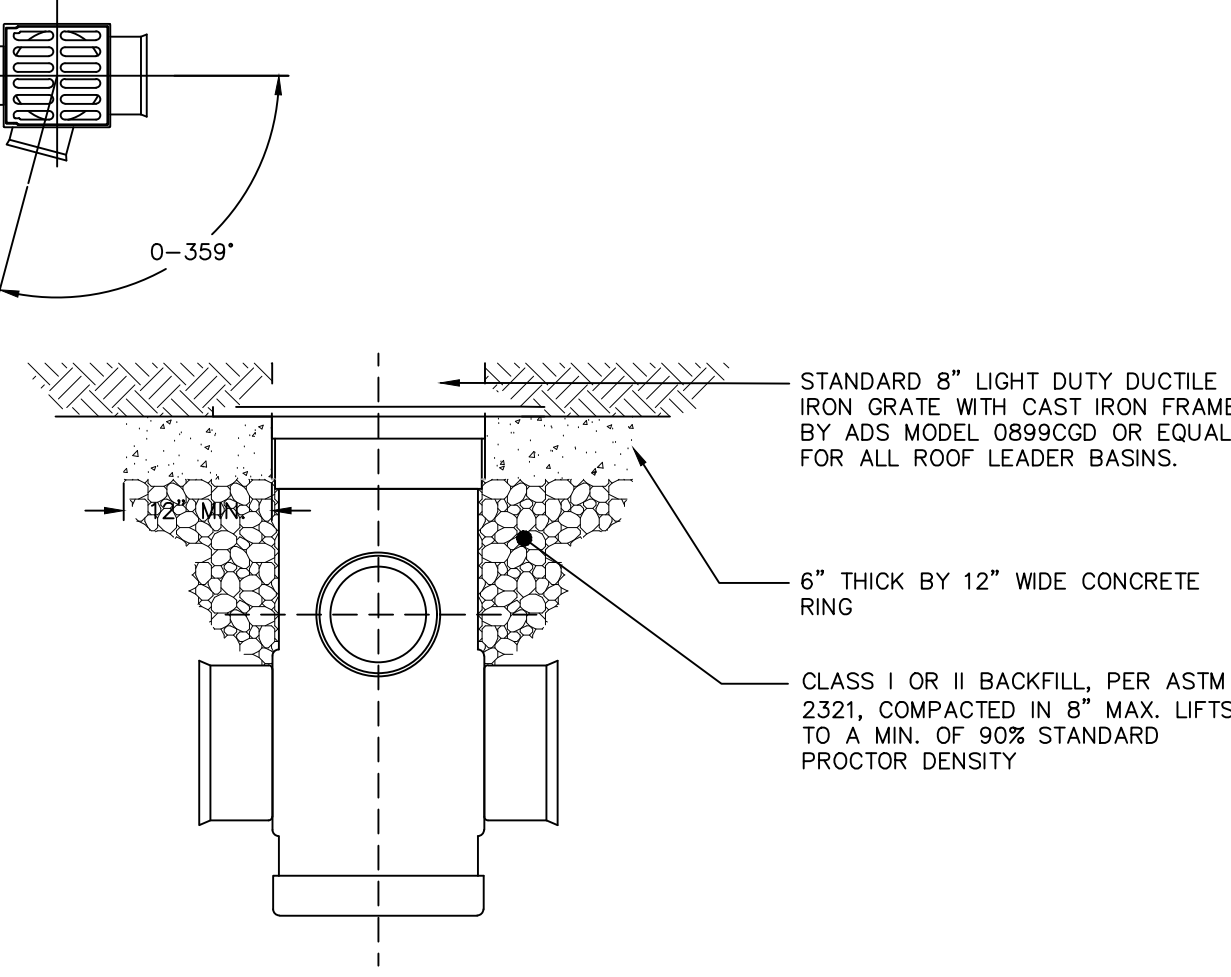
WATER SHUT-OFF VALVE DETAIL  
NOT TO SCALE



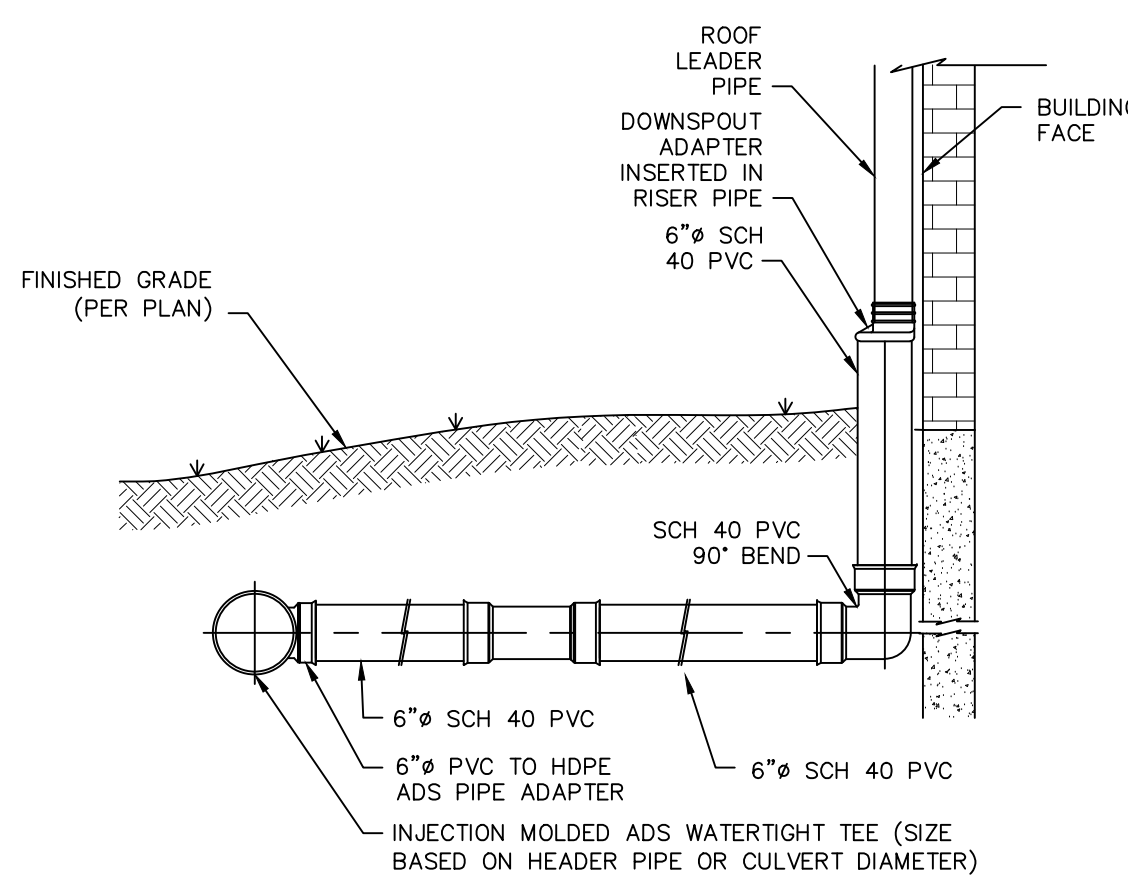
CLEANOUT DETAIL  
NOT TO SCALE



ROOF LEADER IN-LINE DRAIN DETAIL  
NOT TO SCALE



ROOF LEADER CONNECTION DETAIL  
NOT TO SCALE



STORMWATER PIPE IN TRENCH DETAIL  
NOT TO SCALE

# Special Use Permit Application

## Sheet 5 of 5 - Construction Details

Owner:  
**North Avenue Properties, LLC**  
1181 North Avenue  
Beacon, New York 12508

Architect:  
**Aryeh Siegel, Architect**  
514 Main Street  
Beacon, New York 12508

Site / Civil Engineer:  
**Hudson Land Design**  
174 Main Street  
Beacon, New York 12508

Surveyor:  
**John J. Post, Jr.**  
PO Box 827  
Stone Ridge, New York 12484

Landscape Designer:  
**Landscape Restorations**  
P.O. Box 286  
Beacon, New York 12508

**Office Building - 1181 North Avenue**  
Beacon, New York  
Scale: As Noted  
February 27, 2018