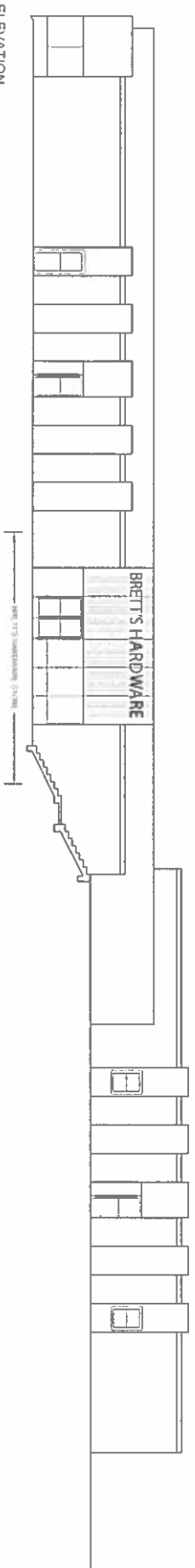
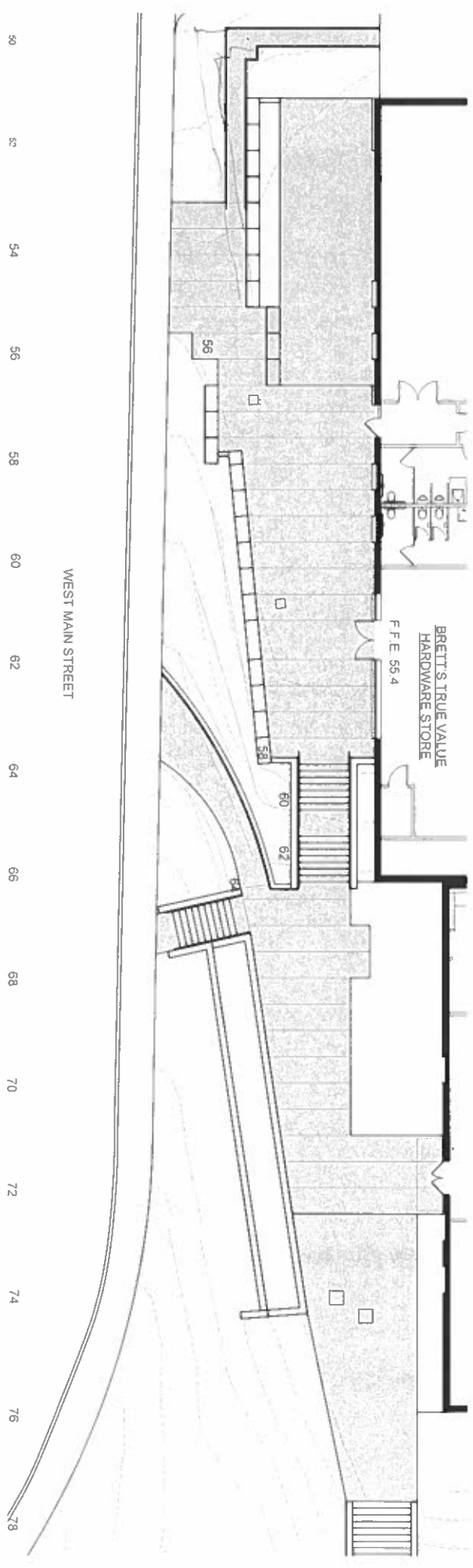


1 SOUTH ELEVATION

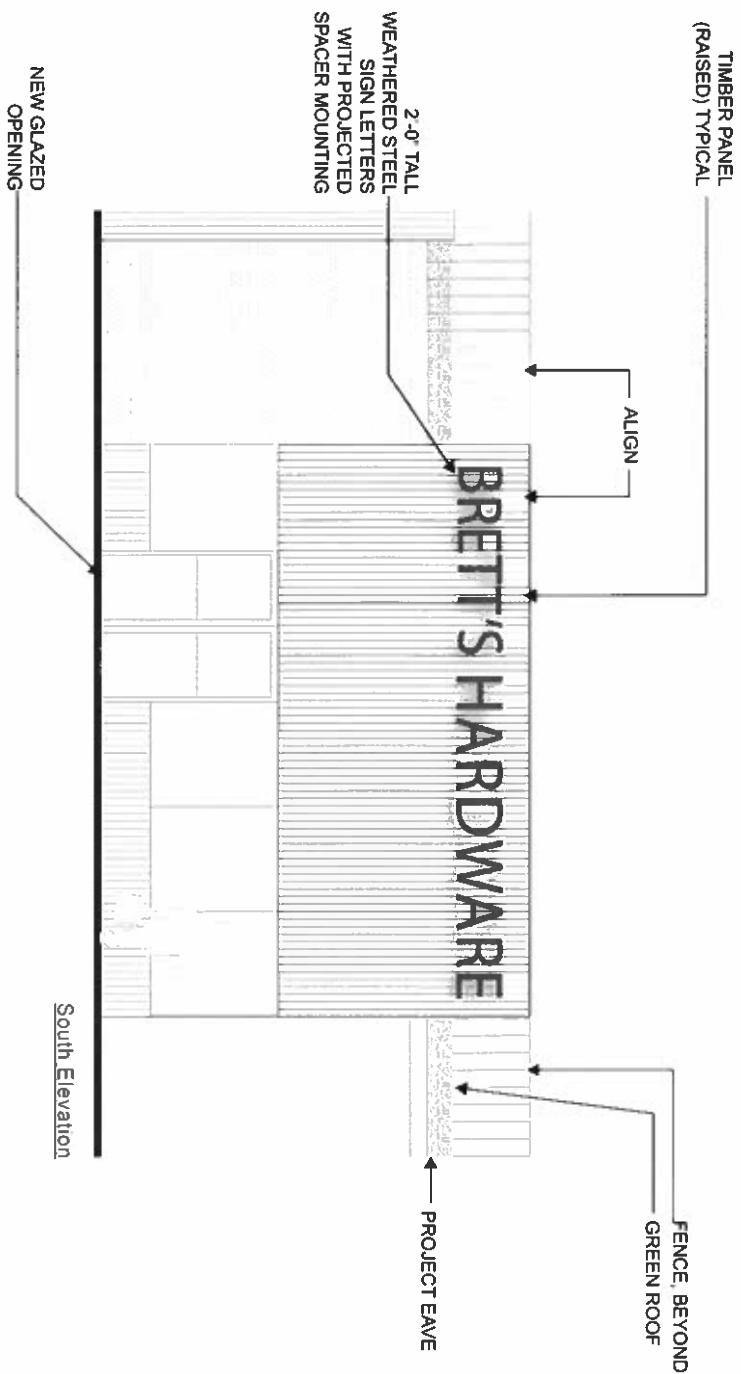


2 SITE PLAN



ALLOWABLE SIGNAGE CRITERIA  
 FOR 70'-0" LF STREET FACING  
 ALLOWABLE SIGNAGE AREA = 70 SF  
 MAX ALLOWABLE HEIGHT = 2'-0"  
 SIGN MUST BE BELOW PROJECT EAVES

PROPOSED SIGNAGE  
 ACTUAL SIGN AREA = 50 SF  
 ACTUAL SIGN HEIGHT = 2'-0"  
 SIGNAGE LOCATION = ABOVE EAVE



## EXISTING STREET VIEWS



VIEW LOOKING NORTHEAST ON WEST MAIN STREET



VIEW LOOKING NORTHEAST ON WEST MAIN STREET



VIEW LOOKING NORTHWEST ON WEST MAIN STREET



VIEW LOOKING NORTHWEST ON WEST MAIN STREET