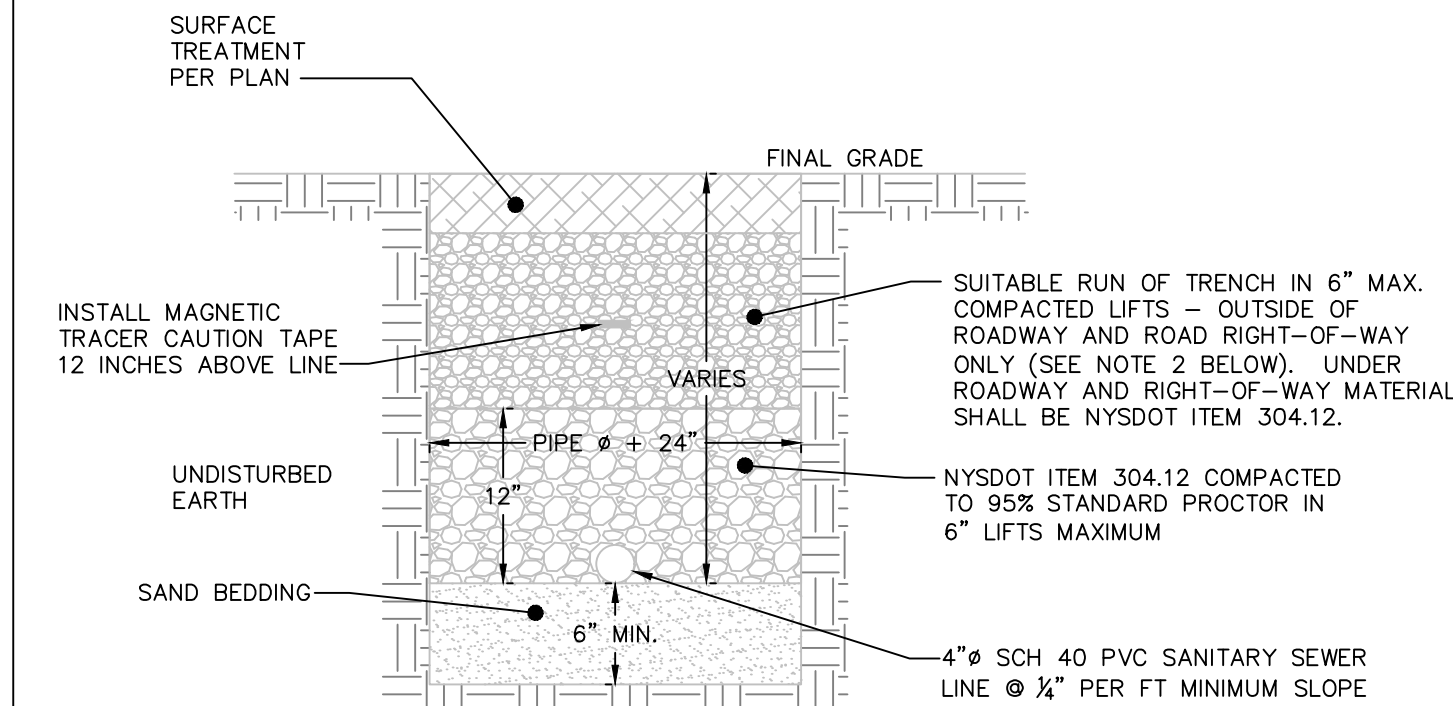
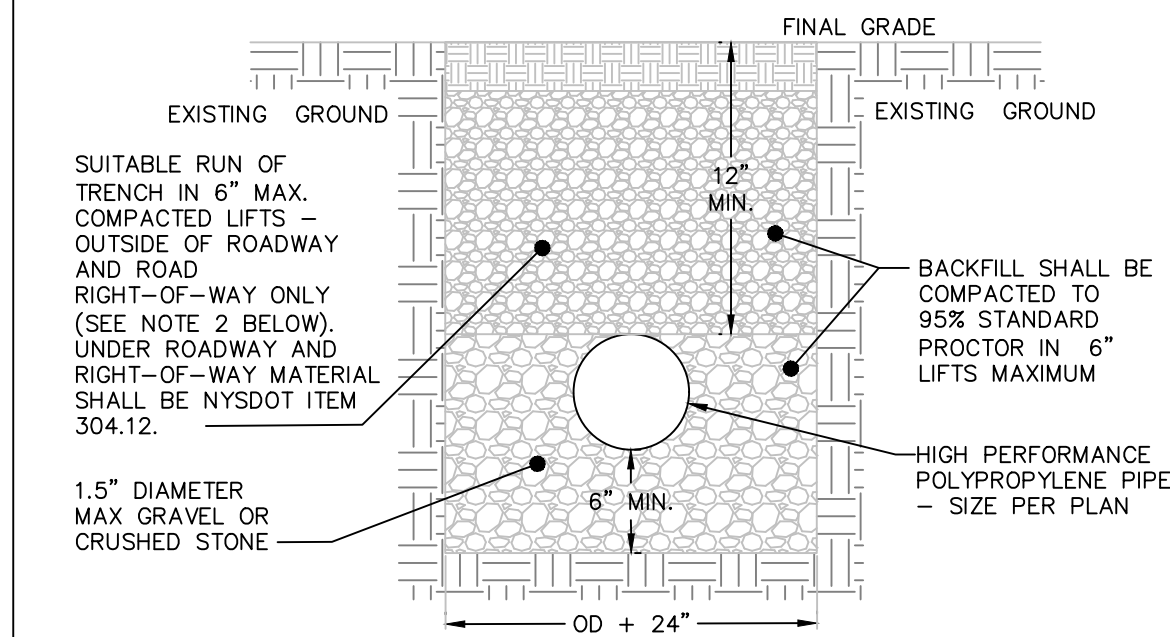


**PAVED DRIVEWAY SECTION DETAIL**  
NOT TO SCALE



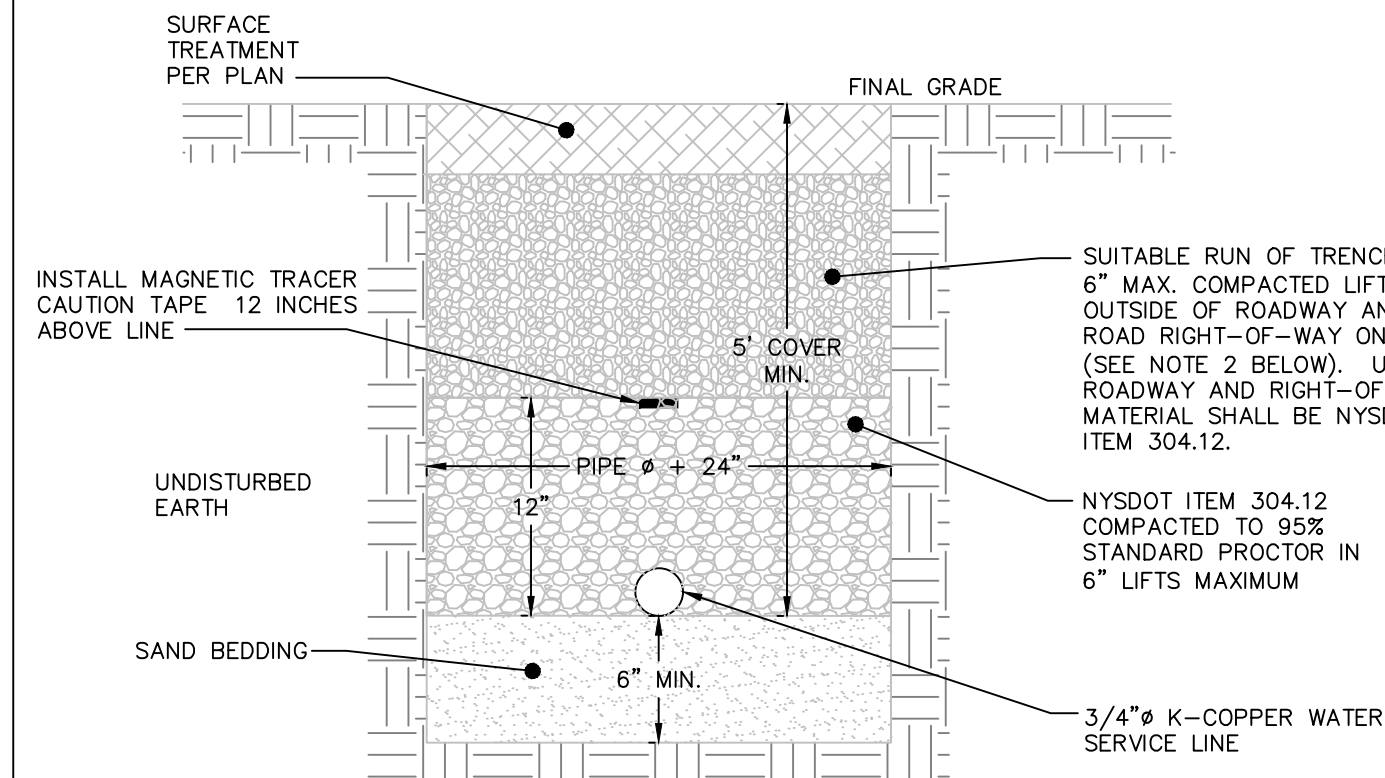
- NOTES:**
1. EXCAVATION AND TRENCHING SHALL MEET ALL OSHA REQUIREMENTS.
  2. SUITABLE RUN OF TRENCH SHALL NOT INCLUDE FROZEN MATERIALS, DEBRIS, ORGANIC MATERIALS, LARGE STONES OR OTHER UNSUITABLE MATERIALS. IF THE RUN OF TRENCH MATERIAL IS FOUND TO BE UNSUITABLE, A SUITABLE BACKFILL MATERIAL SHALL BE IMPORTED AND USED.

**SANITARY SEWER SERVICE TRENCH DETAIL**  
NOT TO SCALE



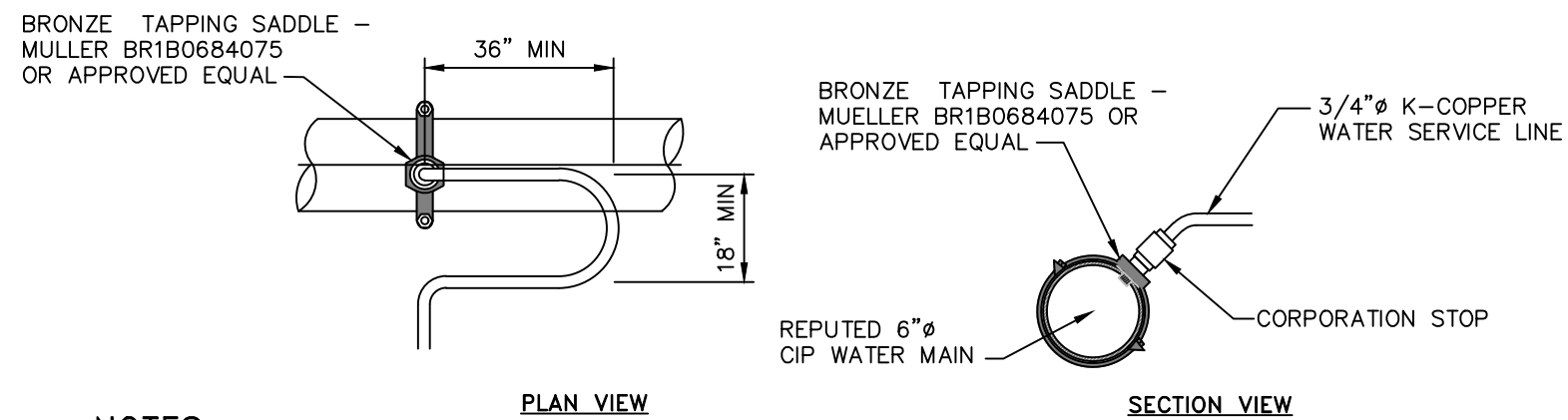
- NOTES:**
1. EXCAVATION AND TRENCHING SHALL MEET ALL OSHA REQUIREMENTS.

**STORM LINE TRENCH DETAIL**  
NOT TO SCALE



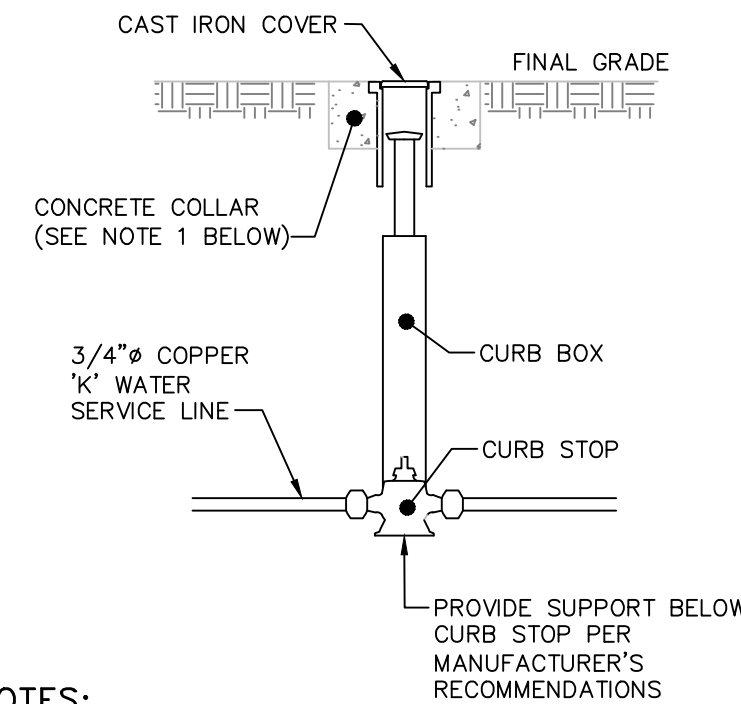
- NOTES:**
1. EXCAVATION AND TRENCHING SHALL MEET ALL OSHA REQUIREMENTS.
  2. SUITABLE RUN OF TRENCH SHALL NOT INCLUDE FROZEN MATERIALS, DEBRIS, ORGANIC MATERIALS, ENLARGED PARTICLES, LARGE STONES OR OTHER UNSUITABLE MATERIALS. IF THE RUN OF TRENCH MATERIAL IS FOUND TO BE UNSUITABLE, A SUITABLE BACKFILL MATERIAL SHALL BE IMPORTED AND USED.
  3. IN AREAS WHERE 5' COVER REQUIREMENT CANNOT BE MET, THE CONTRACTOR SHALL PROVIDE PIPE INSULATION TO PREVENT FREEZING.
  4. IF WATER SERVICE AND SEWER SERVICE LINE CROSSINGS ARE NEEDED, PROVIDE 18\"/>

**WATER SERVICE LINE TRENCH DETAIL**  
NOT TO SCALE



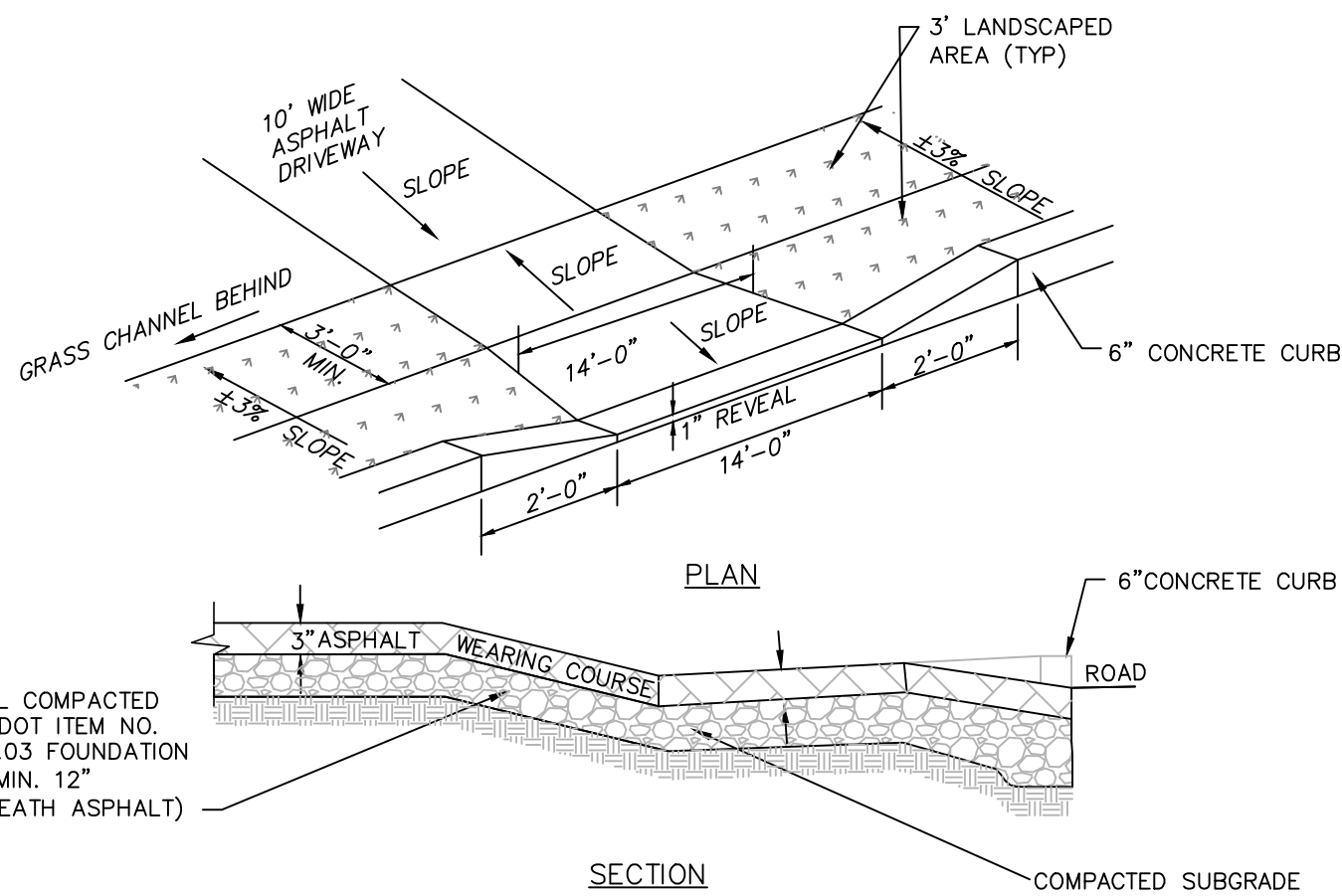
- NOTES:**
1. A MINIMUM 5' COVER SHALL BE PROVIDED ON THE WATER SERVICE LINE (CONDITIONED ON ACTUAL WATER MAIN DEPTH).
  2. CORPORATION STOP TO BE COMPRESSION TYPE BY MUELLER.
  3. WATER SERVICE LINE TO HAVE A 'GOOSENECK' NEAR CORPORATION STOP.
  4. CORPORATION STOP TO BE INSTALLED IN THE UPPER HALF OF THE WATER MAIN AT AN ANGLE OF APPROXIMATELY 45\"/>

**WATER SERVICE CONNECTION DETAIL**  
NOT TO SCALE



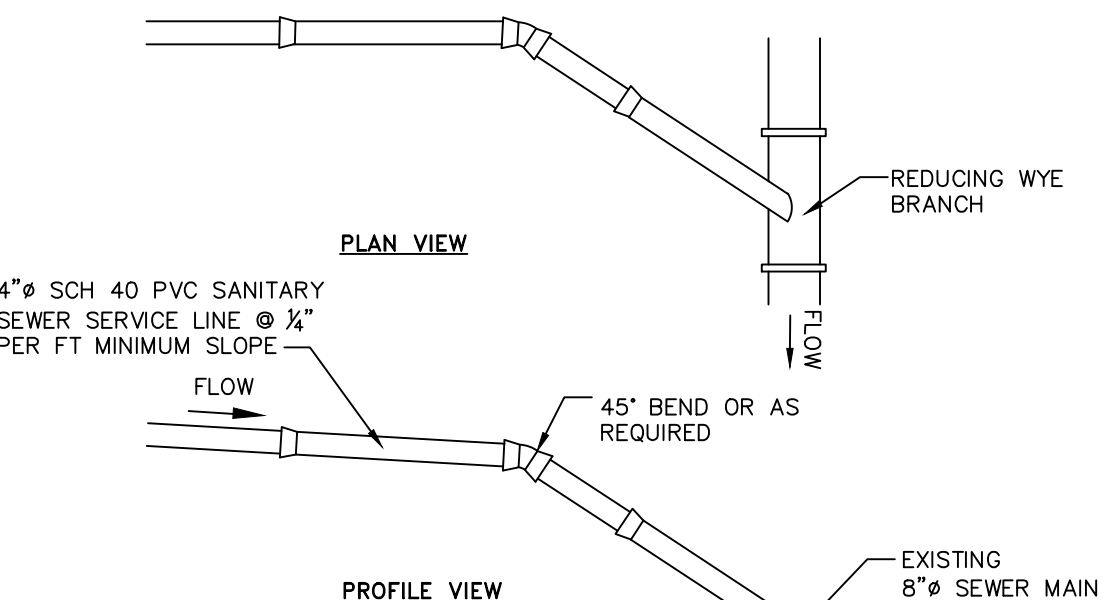
- NOTES:**
1. CONCRETE COLLAR TO BE PROVIDED IN AREAS THAT ARE NOT PAVED. THE COLLAR SHALL BE 6\"/>

**WATER SHUT-OFF VALVE DETAIL**  
NOT TO SCALE



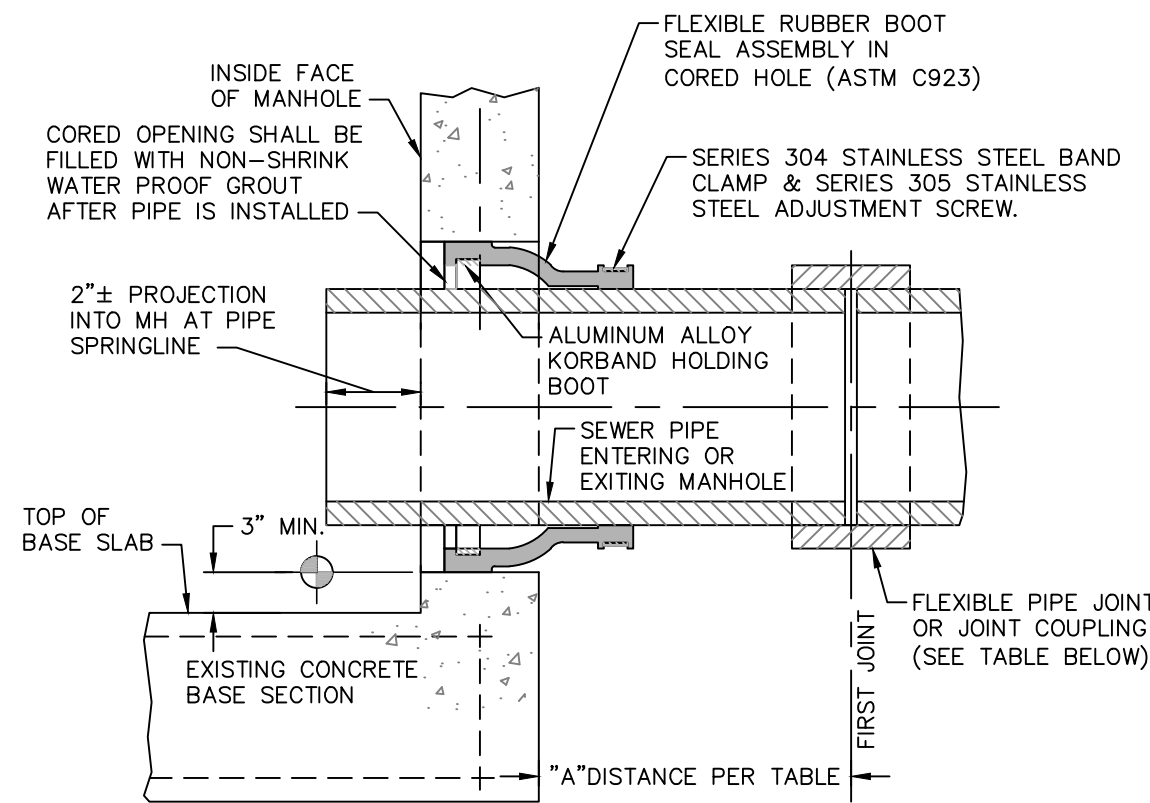
- NOTE:**
1. RESEED AND STABILIZE GRASS AREAS AFTER ASPHALT INSTALLATION.

**DRIVEWAY ENTRANCE DETAIL**  
NOT TO SCALE



- NOTES:**
1. EXCAVATION AND TRENCHING SHALL MEET ALL OSHA REQUIREMENTS.
  2. SUITABLE RUN OF TRENCH SHALL NOT INCLUDE FROZEN MATERIALS, DEBRIS, ORGANIC MATERIALS, LARGE STONES OR OTHER UNSUITABLE MATERIALS. IF THE RUN OF TRENCH MATERIAL IS FOUND TO BE UNSUITABLE, A SUITABLE BACKFILL MATERIAL SHALL BE IMPORTED AND USED.
  3. TAPPING SADDLE FOR CONNECTION OF THE PROPOSED SERVICE LINE TO THE EXISTING SEWER MAIN TO BE A 4\"/>

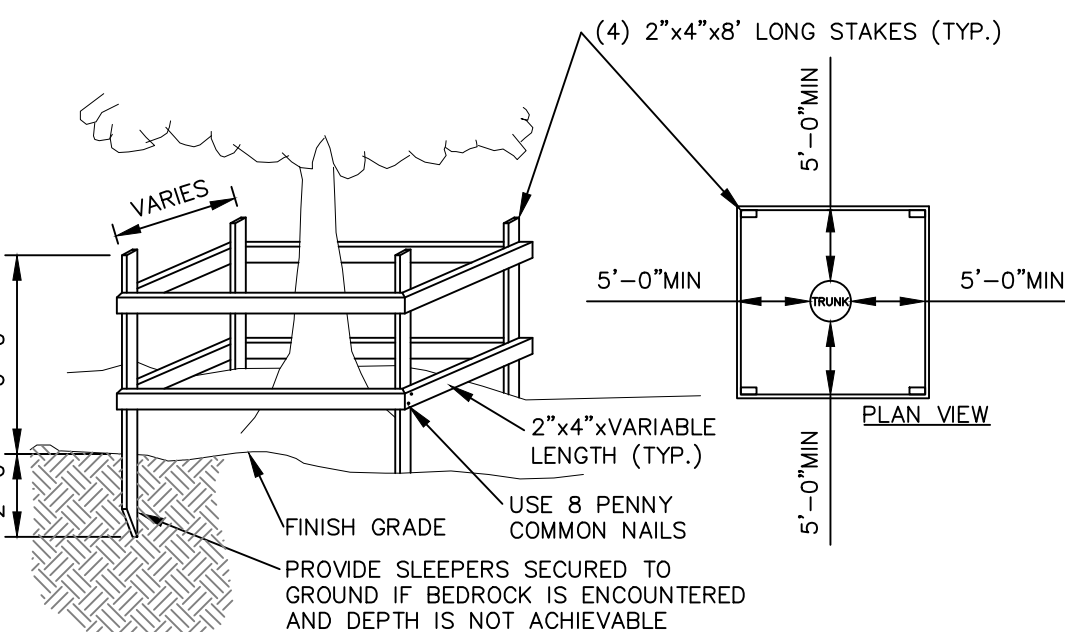
**SANITARY SEWER SERVICE CONNECTION DETAIL**  
NOT TO SCALE



SEWER PIPE TYPE	FLEXIBLE JOINT TYPE IN & OUT	'A' DISTANCE (FEET)
DUCTILE IRON	STD RUBBER GASKET PIPE JOINT ONLY	10' MAX
PVC	STD RUBBER GASKET PIPE JOINT ONLY	3' MAX

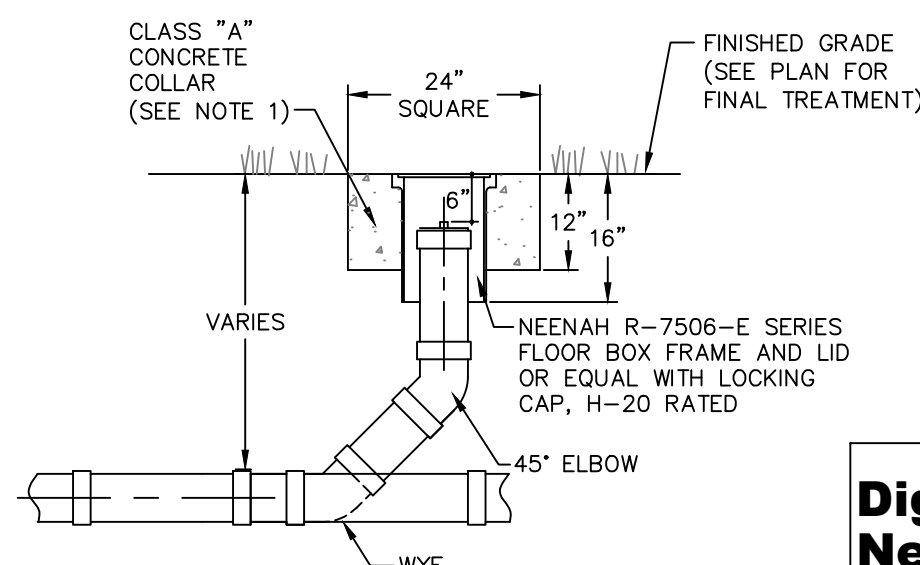
- NOTE:**
- REFERENCE MANHOLE DETAIL(S) FOR REQUIRED INVERT CHANNEL CONFIGURATION.

**CORED HOLE AND  
INSERTED BOOT DETAIL**  
NOT TO SCALE



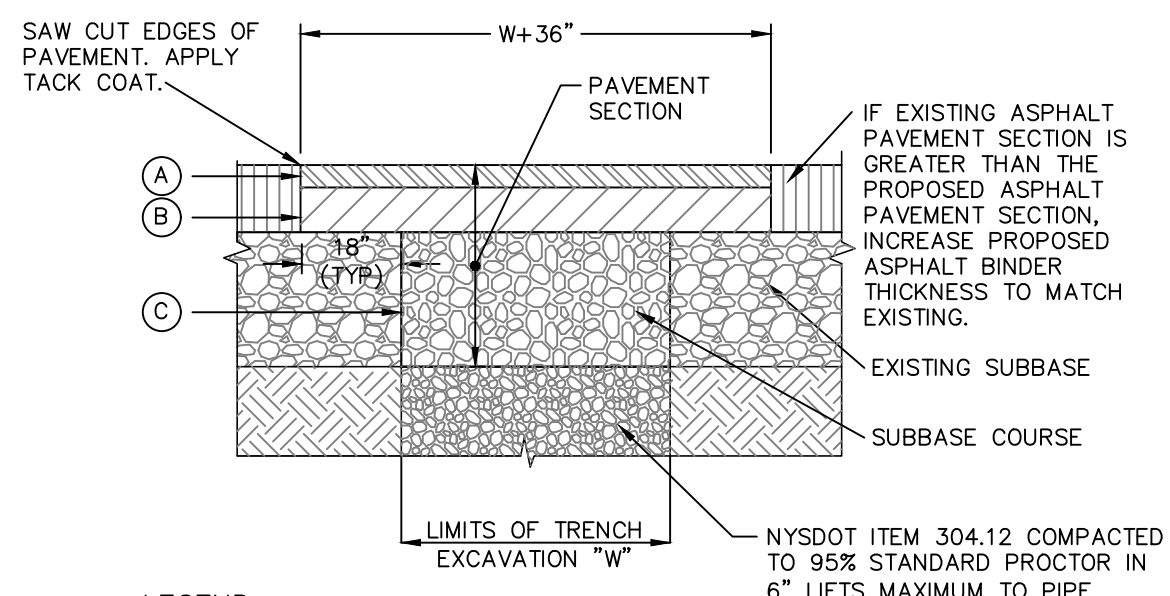
- NOTES:**
1. REFER TO THE PLANS FOR TREES TO REMAIN. NOT ALL TREES TO REMAIN REQUIRE PROTECTION. TREE PROTECTION TO BE UTILIZED ON TREES WHERE CONSTRUCTION TRAFFIC WOULD COMPACT THE ROOT ZONE OF THE TREE.

**TEMPORARY TREE PROTECTION DETAIL**  
NOT TO SCALE



- NOTES:**
1. CONCRETE COLLAR TO BE PROVIDED IN AREAS THAT ARE NOT PAVED. THE COLLAR SHALL BE 6\"/>

**CLEANOUT DETAIL**  
NOT TO SCALE



- LEGEND**
- 1-1/2\"/>

**NOTES:**

1. SAW CUT MIN. 18\"/>

**PAVEMENT RESTORATION DETAIL**  
NOT TO SCALE

DRAWN BY: CMB CHECKED BY: DGK JOB NO.: 2017-038			
REVISIONS:			
NO.	DATE	DESCRIPTION	BY

APPROVED BY RESOLUTION OF THE PLANNING BOARD OF THE CITY OF BEACON, NEW YORK, ON THE \_\_\_\_\_ DAY OF \_\_\_\_\_, 20\_\_\_\_, SUBJECT TO ALL REQUIREMENTS AND CONDITIONS OF SAID RESOLUTION. ANY CHANGE, ERASURE, MODIFICATION OR REVISION OF THIS PLAT, AS APPROVED, SHALL VOID THIS APPROVAL.

SIGNED THIS \_\_\_\_\_ DAY OF \_\_\_\_\_, 20\_\_\_\_, BY \_\_\_\_\_

\_\_\_\_\_ CHAIRMAN

\_\_\_\_\_ SECRETARY

IN ABSENCE OF THE CHAIRMAN OR SECRETARY, THE ACTING CHAIRMAN OR ACTING SECRETARY RESPECTIVELY MAY SIGN IN THIS PLACE.

## DETAILS FAIRVIEW SUBDIVISION

446 WASHINGTON AVE  
CITY OF BEACON  
DUTCHESS COUNTY, NEW YORK  
TAX ID: 6055-82-656107 & 6055-82-645105  
SCALE: 1" = 20'  
DECEMBER 26, 2017

**HUDSON LAND DESIGN**  
HUDSON LAND DESIGN  
PROFESSIONAL ENGINEERING P.C.  
174 MAIN STREET  
BEACON, NEW YORK 12508  
PH: 845-440-6926 F: 845-440-6637



JON D. BODENDORF, P.E.  
NYS LICENSE NO. 076245  
DANIEL G. KOEHLER, P.E.  
NYS LICENSE NO. 082716

SHEET: 4 OF 4