

32 APARTMENTS

- (4) 1 BEDROOM
- (2) 3 BEDROOM
- (2) STUDIO

8 apartments  
x 4 floors  
= 32 apartments

51 APARTMENTS

- (5) 1 BEDROOM
- (2) 2 BEDROOM
- (4) STUDIO

- (2) 2 BEDROOM
- (4) 1 BEDROOM
- (1) STUDIO

11 apartments  
x 4 floors  
= 44 apartments + 7 apartments (5th floor) = 51 apartments total

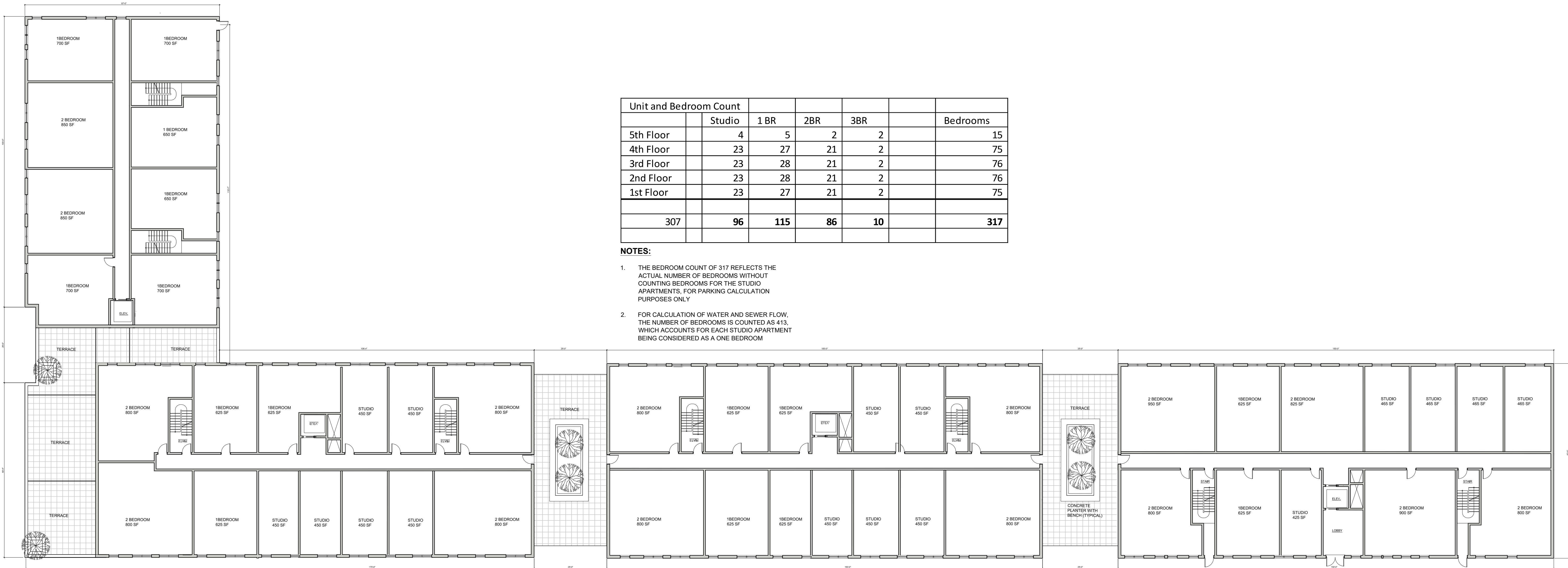
32 APARTMENTS

- (2) 1 BEDROOM
- (4) 2 BEDROOM
- (2) STUDIO

32 APARTMENTS

- (6) 1 BEDROOM
- (2) 2 BEDROOM

8 apartments  
x 4 floors  
= 32 apartments



Typical Floor Plan Diagram

Scale: 1" = 1'-0"

59 APARTMENTS

- (4) 1 BEDROOM
- (4) 2 BEDROOM
- (5) STUDIOS

- 5TH FLOOR
- (3) 2 BEDROOM
- (1) 1 BEDROOM
- (3) STUDIOS

12 apartments  
x 4 floors  
= 52 apartments + 7 apartments (5th Floor) = 59 apartments total

NOTE: INTERIOR FLOOR PLANS ARE NOT PART OF THIS APPLICATION, AND ARE INCLUDED FOR ILLUSTRATION PURPOSES AND TO DEMONSTRATE THE TOTAL NUMBER OF UNITS AND BEDROOMS PROPOSED. THE FLOOR PLANS ARE SUBJECT TO CHANGE, HOWEVER THE FINAL COUNT WILL NOT EXCEED THE APPROVED NUMBER OF UNITS AND BEDROOMS. WINDOW LOCATIONS MAY CHANGE TO CORRESPOND TO FINAL APARTMENT PLAN LAYOUTS

52 APARTMENTS

- (4) 1 BEDROOM X 4 FLOORS = 16 1BR
- (4) 2 BEDROOM X 4 FLOORS = 24 2BR
- (5) STUDIOS

13 apartments  
x 4 floors  
= 52 apartments

48 APARTMENTS

- (2) 1 BEDROOM
- (5) 2 BEDROOM
- (5) STUDIO

12 apartments  
x 4 floors  
= 48 apartments

REVISIONS:			
NO.	DATE	DESCRIPTION	BY
1	02/28/17	REVISE PER PLANNING BOARD COMMENTS	AJS
2	03/28/17	REVISE PER PLANNING BOARD COMMENTS	AJS
3	04/25/17	REVISE PER PLANNING BOARD COMMENTS	AJS
4	05/30/17	NO CHANGE	AJS
5	07/25/17	NO CHANGE	AJS
6	08/29/17	NO CHANGE	AJS
7	09/26/17	NO CHANGE	AJS
8	10/31/17	REVISE PER PLANNING BOARD COMMENTS	AJS

APPROVED BY RESOLUTION OF THE PLANNING BOARD OF THE CITY OF BEACON, NEW YORK, ON THE \_\_\_\_\_ DAY OF \_\_\_\_\_, 20\_\_\_\_, SUBJECT TO ALL REQUIREMENTS AND CONDITIONS OF SAID RESOLUTION, ANY CHANGE, ERASURE, MODIFICATION OR REVISION OF THIS PLAT, AS APPROVED, SHALL VOID THIS APPROVAL.

SIGNED THIS \_\_\_\_\_ DAY OF \_\_\_\_\_, 20\_\_\_\_, BY \_\_\_\_\_

CHAIRMAN

SECRETARY

IN ABSENCE OF THE CHAIRMAN OR SECRETARY, THE ACTING CHAIRMAN OR ACTING SECRETARY RESPECTIVELY MAY SIGN IN THIS PLACE.

Unit and Bedroom Count					
	Studio	1 BR	2BR	3BR	Bedrooms
5th Floor	4	5	2	2	15
4th Floor	23	27	21	2	75
3rd Floor	23	28	21	2	76
2nd Floor	23	28	21	2	76
1st Floor	23	27	21	2	75
307	96	115	86	10	317

NOTES:

- THE BEDROOM COUNT OF 317 REFLECTS THE ACTUAL NUMBER OF BEDROOMS WITHOUT COUNTING BEDROOMS FOR THE STUDIO APARTMENTS, FOR PARKING CALCULATION PURPOSES ONLY
- FOR CALCULATION OF WATER AND SEWER FLOW, THE NUMBER OF BEDROOMS IS COUNTED AS 415, WHICH ACCOUNTS FOR EACH STUDIO APARTMENT BEING CONSIDERED AS A ONE BEDROOM

Typical Floor Plan

Sheet 6 of 15