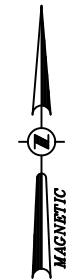


MOUNT BEACON TRAILHEAD PARKING IMPROVEMENTS

CITY OF BEACON, DUTCHESS COUNTY, NY

AUGUST 29, 2017



LOCATION MAP
SCALE: 1"=500'

RECORD OWNER:

SCENIC HUDSON LAND TRUST INC.
ONE CIVIC CENTER PLAZA, SUITE 200
POUGHKEEPSIE, NY 12601

DEVELOPER / APPLICANT:

SCENIC HUDSON LAND TRUST INC.
ONE CIVIC CENTER PLAZA, SUITE 200
POUGHKEEPSIE, NY 12601

SITE CIVIL ENGINEER AND LANDSCAPE ARCHITECT:

CHAZEN ENGINEERING, LAND SURVEYING &
LANDSCAPE ARCHITECTURE CO., D.P.C.
547 RIVER STREET, TROY, NY 12180
PHONE: (518) 273-0055

TAX MAP INFORMATION:

CITY OF BEACON
SECTION 6054, BLOCK 14, LOT 259407

AREA:

TOTAL PROJECT ACREAGE : 15.14 ACRES

BULK TABLE:

ONE FAMILY ZONING DISTRICT: R1-80 (80,000 SQ. FT. / DWELLING)

ZONING REQUIREMENTS:

	REQUIRED	PROPOSED
MINIMUM LOT AREA	80,000 SF	659,414 SF / 15.14 ACRES
MINIMUM LOT WIDTH	150 FT	625'
MINIMUM LOT DEPTH	200 FT	1,276'
MINIMUM YARDS		
FRONT	50 FT	24.5 FT (VARIANCE REQUESTED)
SIDE	30 FT	30 FT
TOTAL OF 2 SIDES	70 FT	109 FEET
REAR	50 FT	>50 FEET
MAXIMUM BUILDING HEIGHT	2 1/2 STORIES / 35 FT	NA
MINIMUM BUILDING HEIGHT	1 STORY / 12 FT	NA
MAXIMUM BUILDING COVERAGE	10%	0%
PARKING SPACES	NOT SPECIFIED	77

INDEX OF DRAWINGS				
PAGE NO.	REV	SHEET NO.	DATE	DESCRIPTION
1	1	G001	7/24/2017	TITLE SHEET
2	1	C120	7/24/2017	SITE REMOVALS PLAN
3	1	C130	7/24/2017	PARKING LOT LAYOUT PLAN
4	1	C140	7/24/2017	GRADING, DRAINAGE & EROSION/SEDIMENT CONTROL PLAN
5	1	C150	7/24/2017	LANDSCAPE PLAN
6	1	C530	7/24/2017	SITE DETAILS
7	1	C531	7/24/2017	SITE DETAILS
8	1	C550	7/24/2017	EROSION & SEDIMENT CONTROL DETAILS

**Dig Safely.
New York**
☐ Call Before You Dig
☐ Wait The Required Time
☐ Confirm Utility Response
☐ Respect The Marks
☐ Dig With Care
800-962-7962
www.digsafelynewyork.com

ISSUED FOR CLIENT REVIEW - NOT FOR CONSTRUCTION

0 1 2 3
ORIGINAL SCALE IN INCHES

ALL RIGHTS RESERVED. COPY OR REPRODUCTION OF THIS DRAWING OR DOCUMENT, OR ANY PORTION THEREOF, WITHOUT THE EXPRESS WRITTEN PERMISSION OF CHAZEN ENGINEERING, LAND SURVEYING & LANDSCAPE ARCHITECTURE CO., D.P.C. IS PROHIBITED. THIS DRAWING OR DOCUMENT IS NOT INTENDED OR REPRESENTED TO BE SUITABLE FOR ANY PURPOSE OTHER THAN THE SPECIFIC PROJECT, APPLICATION AND SITUATION FOR WHICH IT WAS INTENDED. ANY MODIFICATION OF THIS DRAWING OR DOCUMENT, OR ANY USE FOR ANY PROJECT, APPLICATION OR SITUATION OTHER THAN THAT FOR WHICH IT WAS INTENDED, WILL BE AT USER'S SOLE RISK AND WITHOUT LIABILITY TO CHAZEN ENGINEERING, LAND SURVEYING & LANDSCAPE ARCHITECTURE CO., D.P.C.

IT IS A VIOLATION OF NEW YORK STATE EDUCATION LAW FOR ANY PERSON TO ALTER THIS DRAWING OR DOCUMENT IN ANY WAY, UNLESS HE OR SHE IS ACTING UNDER THE DIRECTION OF A LICENSED DESIGN PROFESSIONAL (PROFESSIONAL ENGINEER, LAND SURVEYOR, ARCHITECT OR LANDSCAPE ARCHITECT). IF THIS DRAWING OR DOCUMENT IS ALTERED, THE ALTERING DESIGN PROFESSIONAL SHALL AFFIX TO THE DRAWING OR DOCUMENT HIS OR HER SEAL, THE NOTATION "ALTERED BY" FOLLOWED BY HIS OR HER SIGNATURE, THE DATE OF SUCH ALTERATION, AND A SPECIFIC DESCRIPTION OF THE ALTERATION.

CHAZEN ENGINEERING, LAND SURVEYING & LANDSCAPE ARCHITECTURE, CO., D.P.C.

THE
Chazen
COMPANIES®
Proud to be Employee Owned®

Office Locations:

☐ Hudson Valley Office:
21 Fox Street
Poughkeepsie, New York 12601
Phone: (845) 454-3980

☐ North Country Office:
375 Bay Road
Queensbury, New York 12804
Phone: (518) 812-0513

☒ Capital District Office:
547 River Street
Troy, New York 12180
Phone: (518) 273-0055

☐ Central NY Office:
721 East Genesee Street
Syracuse, New York 13210
Phone: (315) 251-1013

Tennessee Office:
1033 Demonbreun Street, Suite 300,
Nashville, Tennessee 37203
Phone: (615) 380-1359

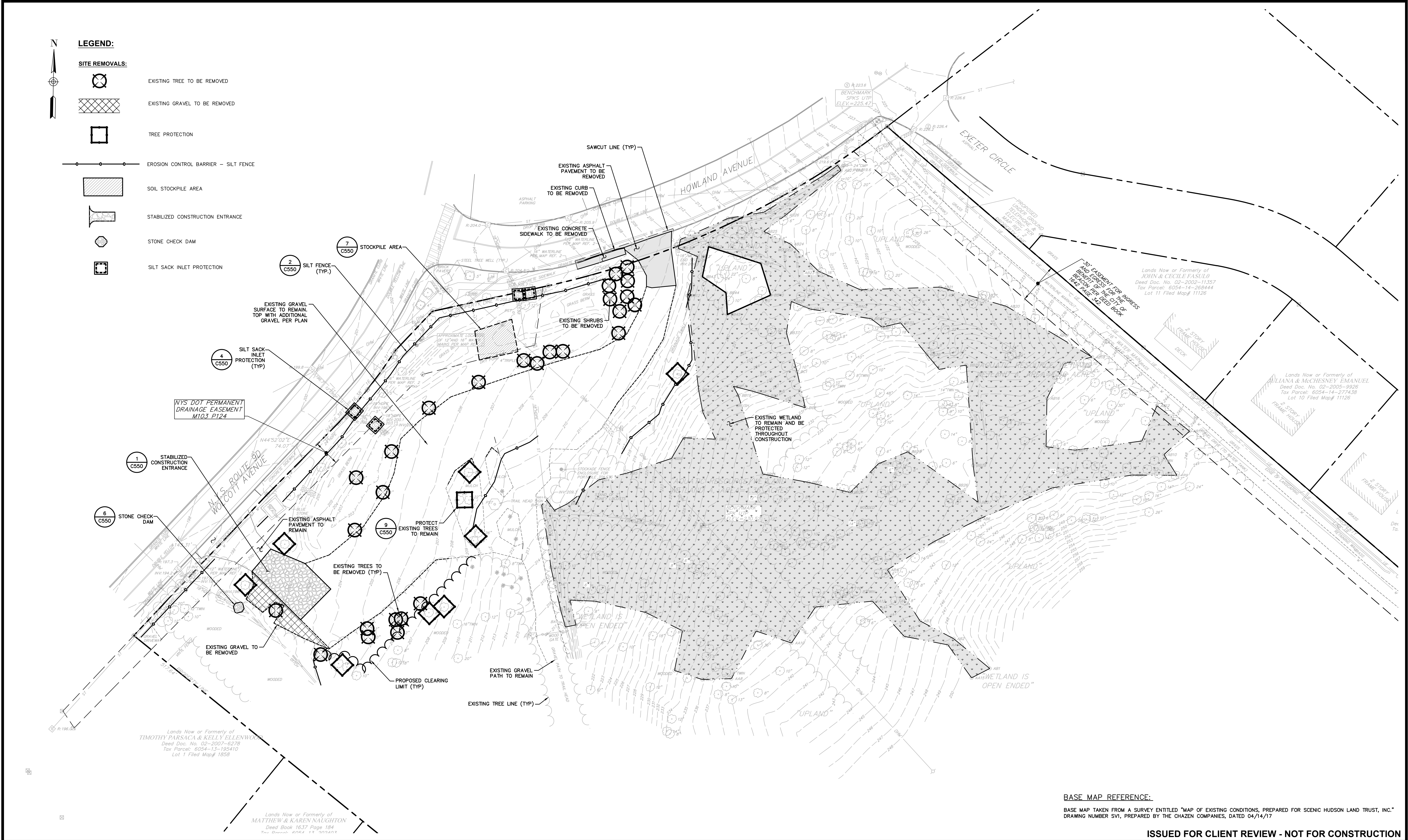
1	7/24/2017	REVISED PER CLIENT COMMENTS
rev.	date	description







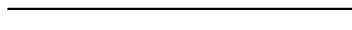
MOUNT BEACON TRAILHEAD PARKING IMPROVEMENTS

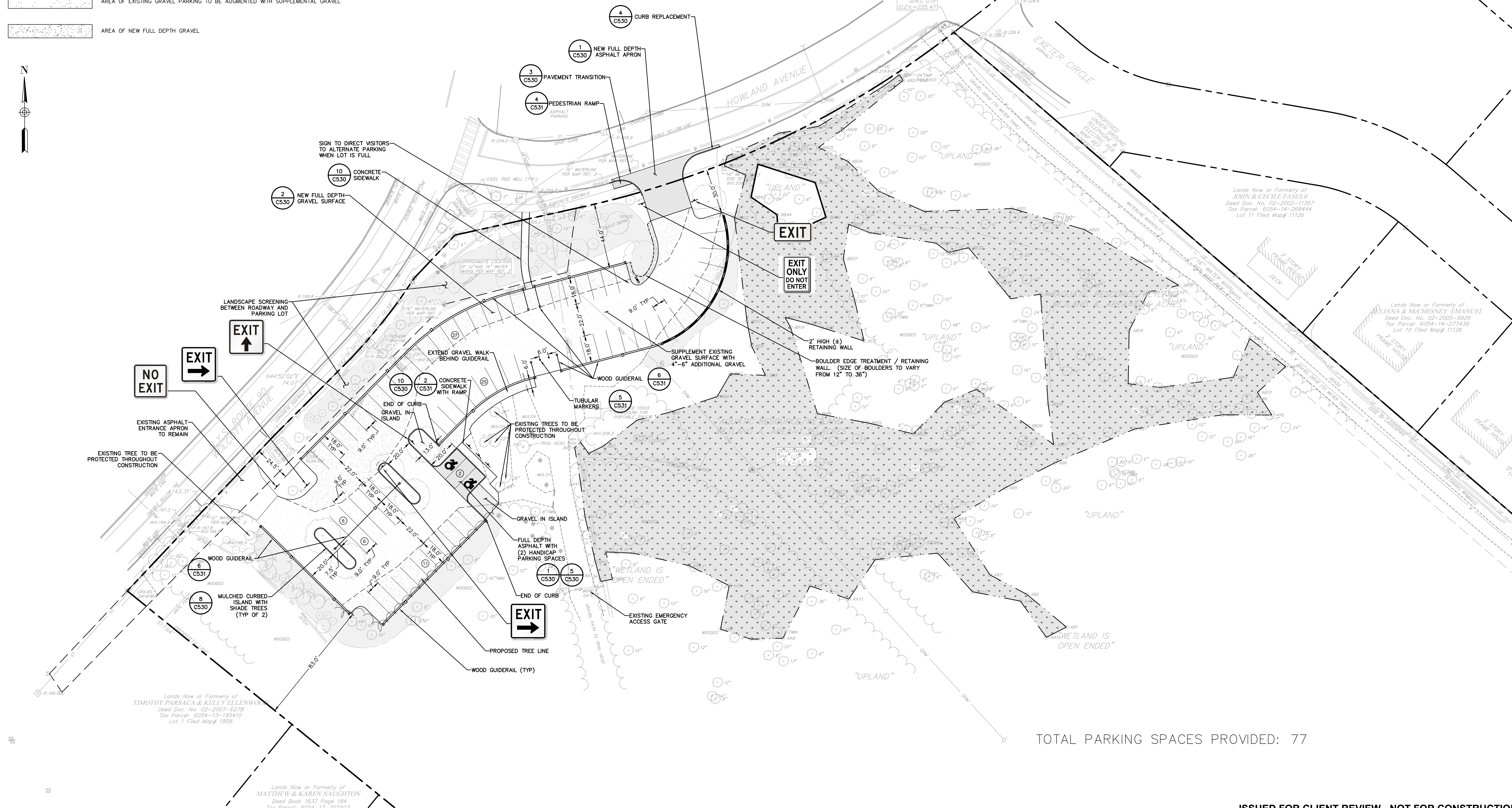
TITLE SHEET

CITY OF BEACON, DUTCHESS COUNTY, NEW YORK

designed	checked
LL	BB
date	scale
8/29/17	NA
project no.	
31725.00	
sheet no.	
G001	
1 OF 8	



	LOT LINE
	SIDEWALK
	CURB
	EDGE OF GRAVEL PARKING AREA
	EXISTING TREE LINE
	AREA OF EXISTING GRAVEL PARKING TO BE AUGMENTED WITH SUPPLEMENTAL GRAVEL
	AREA OF NEW FULL DEPTH GRAVEL



TOTAL PARKING SPACES PROVIDED: 77

ISSUED FOR CLIENT REVIEW - NOT FOR CONSTRUCTION

THE
Chazen
COMPANIES
Proud to be Employee Owned

Engineers
Land Surveyors
Planners
Environmental & Safety Professionals
Interior Architects

☐ Hudson Valley Office:
21 Fox Street
Poughkeepsie, New York 12601
Phone: (845) 454-3980

☐ North Country Office:
375 Bay Road
Queensbury, New York 12804
Phone: (518) 812-0513

Capital District Office:
547 River Street
Troy, New York 12180
Phone: (518) 273-0055

Central NY Office:
721 East Genesee Street
Syracuse, New York 13210
Phone: (315) 251-1013

Tennessee Office:
1033 Demonbreun Street, Suite 300,
Nashville, Tennessee 37203
Phone: (615) 380-1359

1	7/24/2017	REVISED PER CLIENT COMMENTS
SPIV		Medication

MOUNT BEACON TRAILHEAD PARKING IMPROVEMENTS

PARKING LOT LAYOUT PLAN

CITY OF BEACON, DUTCHESS COUNTY, NEW YORK

designed LL	checked BB
date 8/29/17	scale 1"=30'
project no. 31725.00	
sheet no. C130 3 OF 8	

Drawing Name: Z:\projects\31700-31799\31725.00 Scenic Hudson Mount Beacon Trailhead\DWG\01_C130_31725-00_SITE.dwg
Xref's Attached: XBASE_SVY_31725-00; XTB_31725-00; XLAYOUT_31725-00; XLANDSCAPE_31725-00
Date Printed: Aug 28, 2017, 2:11pm

GRADING & EROSION CONTROL:

- 210 10 FT CONTOUR
- 211 1 FT CONTOUR
- X207.74 SPOT ELEVATIONS
- DRAINAGE SWALE
- EROSION CONTROL BARRIER - SILT FENCE
- SOIL STOCKPILE AREA
- STABILIZED CONSTRUCTION ENTRANCE
- STONE CHECK DAM
- SILT SACK INLET PROTECTION



- GRADING NOTES:
- PRIOR TO SITE DISTURBANCE, CONTRACTOR TO INSTALL EROSION & SEDIMENT CONTROL MEASURES.
 - IF ROCK IS ENCOUNTERED DURING CONSTRUCTION & REMOVAL BY BLASTING IS REQUIRED, THE CONTRACTOR SHALL OBTAIN ALL NECESSARY APPROVALS AND PERMITS REQUIRED BY THE AUTHORITY HAVING JURISDICTION.
 - ALL BLASTING OPERATIONS WILL ADHERE TO NEW YORK STATE AND LOCAL AUTHORITY ORDINANCES GOVERNING THE USE OF EXPLOSIVES. THE STATE REGULATIONS ARE CONTAINED IN 12 NYCRR 39 AND INDUSTRIAL CODE RULE 753.
 - STRIP ALL TOPSOIL PRIOR TO COMMENCING EARTHWORK OPERATIONS. TOPSOIL MAY BE STORED AND REUSED IN LAWN AND PLANTING AREAS ONLY. TOPSOIL AND SEED ALL AREAS DISTURBED BY CONSTRUCTION THAT ARE TO REMAIN GREEN.
 - BOX ALL TREES AND HOUSE ALL SHRUBS AND HEDGES BEFORE PLACING EARTH AGAINST OR NEAR THEM. ORNAMENTAL TREES, SHRUBS AND HEDGES WHICH MUST BE REMOVED DURING CONSTRUCTION SHALL BE HEALED IN AND RE-PLANTED IN AS GOOD A CONDITION AS THEY WERE BEFORE THEIR REMOVAL. ANY DAMAGED TREES, SHRUBS, AND/OR HEDGES SHALL BE REPLACED AT THE CONTRACTOR'S EXPENSE.
 - ALL EARTHWORK SHALL BE SMOOTHLY AND EVENLY BLENDED INTO EXISTING CONDITIONS. NO WORK, STORAGE OR TRESPASS SHALL BE PERMITTED BEYOND THE BOUNDARIES OF ANY EASEMENT OR PROPERTY LINE.
 - REMOVE ALL VEGETATION, TREES, STUMPS, GRASSES, ORGANIC SOILS, DEBRIS AND DELETERIOUS MATERIALS WITHIN THE AREAS SLATED FOR CONSTRUCTION.
 - IF PREVIOUSLY UNKNOWN CULTURAL, ARCHEOLOGICAL, OR HISTORIC REMAINS OR ARTIFACTS ARE DISCOVERED IN THE COURSE OF CONSTRUCTION OF THIS PROJECT, THE PROJECT SPONSORS SHALL SUSPEND CONSTRUCTION OPERATIONS IN THE PERTINENT AREA AND SHALL NOTIFY THE PROJECT ENGINEER. CONSTRUCTION IN THAT AREA SHALL RESUME ONLY AFTER COMPLETION OF FEDERAL, TRIBAL, AND STATE COORDINATION TO DETERMINE WHETHER PROTECTION OR RECOVERY OF THE REMAINS IS WARRANTED, OR WHETHER THE SITE IS ELIGIBLE FOR LISTING IN THE NATIONAL REGISTER OF HISTORIC PLACES.

ISSUED FOR CLIENT REVIEW - NOT FOR CONSTRUCTION

ALL RIGHTS RESERVED. COPY OR REPRODUCTION OF THIS DRAWING OR DOCUMENT, OR ANY PORTION THEREOF, WITHOUT THE EXPRESS WRITTEN PERMISSION OF CHAZEN ENGINEERING, LAND SURVEYING & LANDSCAPE ARCHITECTURE CO., D.P.C. IS PROHIBITED. THIS DRAWING OR DOCUMENT IS NOT INTENDED OR REPRESENTED TO BE SUITABLE FOR ANY PURPOSE OTHER THAN THE SPECIFIC PROJECT, APPLICATION AND SITUATION FOR WHICH IT WAS INTENDED. ANY MODIFICATION OF THIS DRAWING OR DOCUMENT, OR ANY USE FOR ANY PROJECT, APPLICATION OR SITUATION OTHER THAN THAT FOR WHICH IT WAS INTENDED, WILL BE AT USER'S SOLE RISK AND WITHOUT LIABILITY TO CHAZEN ENGINEERING, LAND SURVEYING & LANDSCAPE ARCHITECTURE CO., D.P.C.

IT IS A VIOLATION OF NEW YORK STATE EDUCATION LAW FOR ANY PERSON TO ALTER THIS DRAWING OR DOCUMENT IN ANY WAY, UNLESS HE OR SHE IS ACTING UNDER THE DIRECTION OF A LICENSED DESIGN PROFESSIONAL (PROFESSIONAL ENGINEER, LAND SURVEYOR, ARCHITECT OR LANDSCAPE ARCHITECT). IF THIS DRAWING OR DOCUMENT IS ALTERED, THE ALTERING DESIGN PROFESSIONAL SHALL AFFIX TO THE DRAWING OR DOCUMENT HIS OR HER SEAL, THE NOTATION "ALTERED BY FOLLOWED BY HIS OR HER SIGNATURE, THE DATE OF SUCH ALTERATION, AND A SPECIFIC DESCRIPTION OF THE ALTERATION.

CHAZEN ENGINEERING, LAND SURVEYING & LANDSCAPE ARCHITECTURE, CO., D.P.C.



Office Locations:

Hudson Valley Office:
21 Fox Street
Poughkeepsie, New York 12601
Phone: (845) 454-3980

North Country Office:
375 Bay Road
Queensbury, New York 12804
Phone: (518) 812-0513

Capital District Office:
547 River Street
Troy, New York 12180
Phone: (518) 273-0055

Central NY Office:
721 East Genesee Street
Syracuse, New York 13210
Phone: (315) 251-1013

Tennessee Office:
1033 Demonbreun Street, Suite 300,
Nashville, Tennessee 37203
Phone: (615) 380-1359

1	7/24/2017	REVISED PER CLIENT COMMENTS
rev.	date	description

MOUNT BEACON TRAILHEAD PARKING IMPROVEMENTS

GRADING, DRAINAGE AND EROSION/SEDIMENT CONTROL PLAN

CITY OF BEACON, DUTCHESS COUNTY, NEW YORK

designed	checked
LL	BB
date	scale
8/29/17	1"=30'
project no.	
31725.00	
sheet no.	
C140	
4 OF 8	

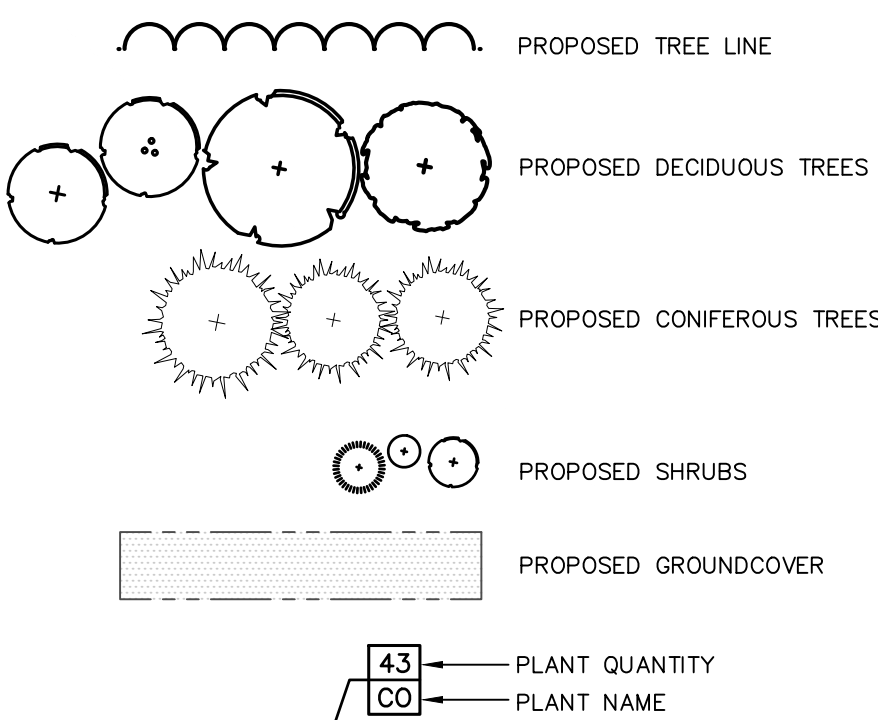


PLANT LIST

QTY	ABRV	BOTANICAL NAME	COMMON NAME	SIZE	COND	SPACING	REMARKS
TREES							
5	AR	Acer rubrum 'October Glory'	October Glory Red Maple	2 - 2.5" Cal.	B&B	As Shown	
2	BL	Betula lenta	Sweet Birch	1.75" - 2" Cal.	B&B	As Shown	
2	CL	Corpinus caroliniana	American Hornbeam	2" - 2.5" Cal.	B&B	As Shown	
1	CF	Cornus florida	Flowering Dogwood	6' - 7' Ht.	B&B	As Shown	
3	QR	Quercus rubra	Red Oak	2 - 2.5" Cal.	B&B	As Shown	
SHRUBS							
5	Am	Amelanchier canadensis	Serviceberry	30-36"	Cont.	As Shown	
16	Ca	Clethra alnifolia 'Hummingbird'	Hummingbird Summersweet	#3 Cont.	As Shown		
10	Cm	Cornus amomum	Silky Dogwood	24"-30"	Cont.	As Shown	
5	Kt	Kalmia latifolia	Mountain Laurel	30"-36"	Cont.	As Shown	
13	Va	Viburnum acerifolium	Mapleleaf Viburnum	24"-30"	Cont.	As Shown	
2	Vt	Viburnum trilobum 'Alfreda'	Alfreda Cranberry Viburnum	36"	Cont.	As Shown	

* ALL DISTURBED AREAS NOT SPECIFICALLY CALLED OUT FOR NEW IMPROVEMENTS SHALL BE TOPSOILED, SEEDED WITH LAWN SEED MIX, & MULCHED (TYP)

LANDSCAPING LEGEND:



NATURALIZED SUCCESSIONAL ZONE TO BE PLANTED WITH 'NATIVE UPLAND WILDLIFE FORAGE AND COVER MEADOW MIX' BY ERNST SEEDS (ERNMX-133) OR APPROVED EQUIVALENT.

NATURALIZED SUCCESSIONAL ZONE TO BE PLANTED WITH 'NATIVE UPLAND WILDLIFE FORAGE AND COVER MEADOW MIX' BY ERNST SEEDS (ERNMX-133) OR APPROVED EQUIVALENT.

LAWN (TYP)

LAWN (TYP)

DECIDUOUS TREE PLANTING (TYP)

NATURALIZED SUCCESSIONAL ZONE TO BE PLANTED WITH 'NATIVE UPLAND WILDLIFE FORAGE AND COVER MEADOW MIX' BY ERNST SEEDS (ERNMX-133) OR APPROVED EQUIVALENT.

CHAZEN ENGINEERING, LAND SURVEYING & LANDSCAPE ARCHITECTURE, CO., D.P.C.



Office Locations:

- Hudson Valley Office: 21 Fox Street, Poughkeepsie, New York 12601, Phone: (845) 454-3980
- North Country Office: 375 Bay Road, Queensbury, New York 12804, Phone: (518) 812-0513
- Capital District Office: 547 River Street, Troy, New York 12180, Phone: (518) 273-0055
- Central NY Office: 721 East Genesee Street, Syracuse, New York 13210, Phone: (315) 251-1013
- Tennessee Office: 1033 Demonbreun Street, Suite 300, Nashville, Tennessee 37203, Phone: (615) 380-1359

MOUNT BEACON TRAILHEAD PARKING IMPROVEMENTS

LANDSCAPE PLAN

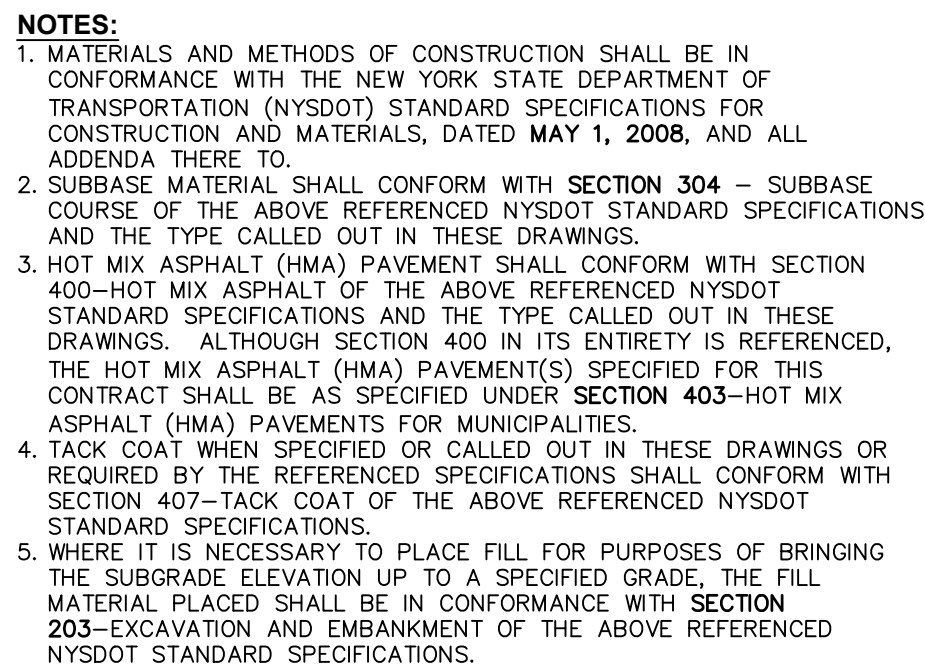
CITY OF BEACON, DUTCHESS COUNTY, NEW YORK

designed	checked
LL	BB
date	scale
8/29/17	1"=30'
project no.	31725.00
sheet no.	C150
	5 OF 8

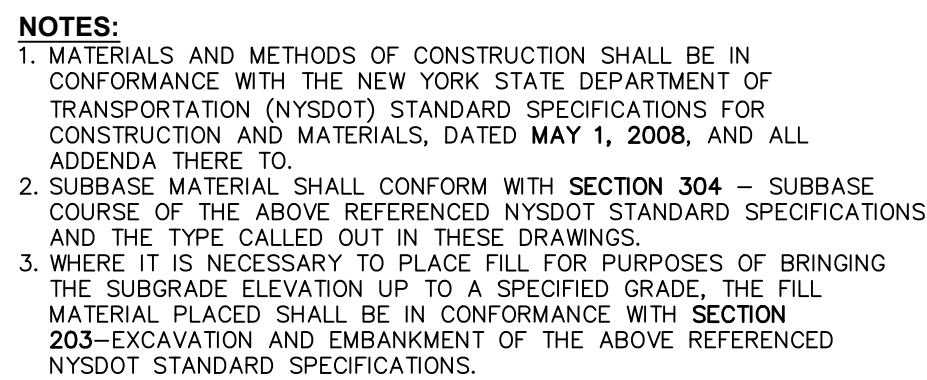
ALL RIGHTS RESERVED. COPY OR REPRODUCTION OF THIS DRAWING OR DOCUMENT, OR ANY PORTION THEREOF, WITHOUT THE EXPRESS WRITTEN PERMISSION OF CHAZEN ENGINEERING, LAND SURVEYING & LANDSCAPE ARCHITECTURE, CO., D.P.C. IS PROHIBITED. THIS DRAWING OR DOCUMENT IS NOT INTENDED OR REPRESENTED TO BE SUITABLE FOR ANY PURPOSE OTHER THAN THE SPECIFIC PROJECT, APPLICATION AND SITUATION FOR WHICH IT WAS INTENDED. ANY MODIFICATION OF THIS DRAWING OR DOCUMENT, OR ANY USE FOR ANY PROJECT, APPLICATION OR SITUATION OTHER THAN THAT FOR WHICH IT WAS INTENDED, WILL BE AT USER'S SOLE RISK AND WITHOUT LIABILITY TO CHAZEN ENGINEERING, LAND SURVEYING & LANDSCAPE ARCHITECTURE, CO., D.P.C.

IT IS A VIOLATION OF NEW YORK STATE EDUCATION LAW FOR ANY PERSON TO ALTER THIS DRAWING OR DOCUMENT IN ANY WAY, UNLESS HE OR SHE IS ACTING UNDER THE DIRECTION OF A LICENSED DESIGN PROFESSIONAL (PROFESSIONAL ENGINEER, LAND SURVEYOR, ARCHITECT OR LANDSCAPE ARCHITECT). IF THIS DRAWING OR DOCUMENT IS ALTERED, THE ALTERING DESIGN PROFESSIONAL SHALL AFFIX TO THE DRAWING OR DOCUMENT HIS OR HER SEAL, THE NOTATION "ALTERED BY" FOLLOWED BY HIS OR HER SIGNATURE, THE DATE OF SUCH ALTERATION, AND A SPECIFIC DESCRIPTION OF THE ALTERATION.





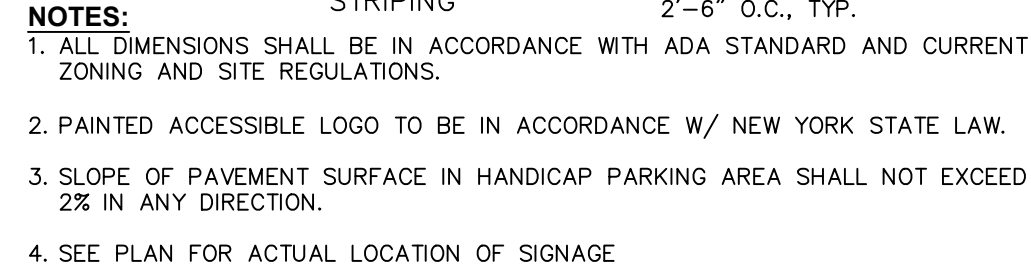
SCALE: NOT TO SCALE



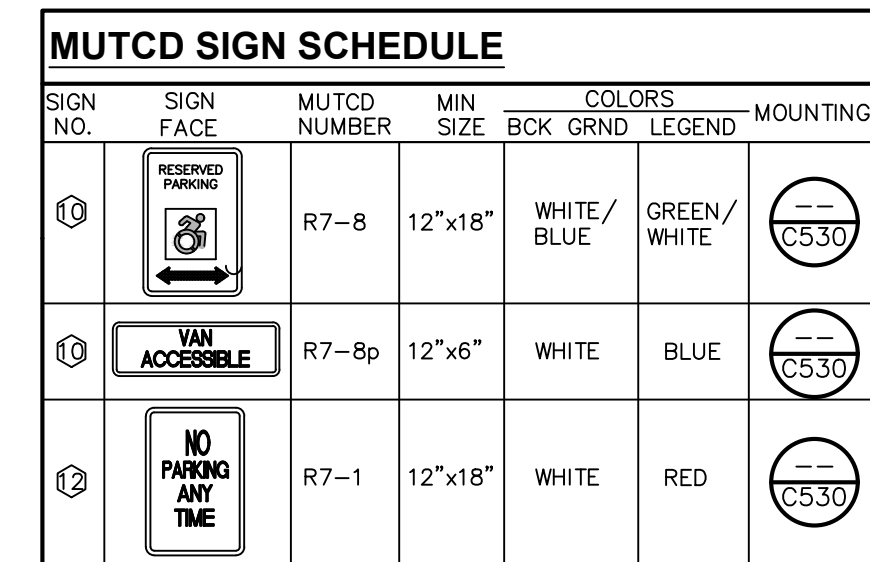
SCALE: NOT TO SCALE



SCALE: NOT TO SCALE



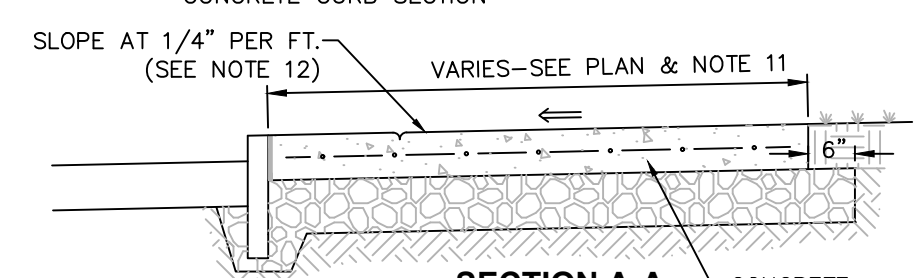
PARKING STRIPING

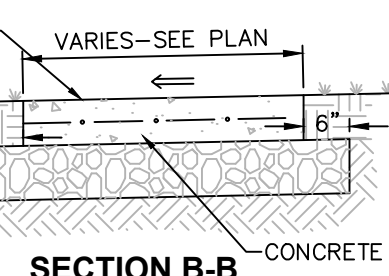


SCALE: NOT TO SCALE



SCALE: NOT TO SCALE





- NOTES:**
1. MATERIAL AND METHODS OF CONSTRUCTION SHALL BE IN CONFORMANCE WITH THE NEW YORK STATE DEPARTMENT OF TRANSPORTATION AND CONSTRUCTION SPECIFICATIONS FOR CONSTRUCTION AND MATERIALS, DATED MAY 1, 2008, AND ALL ADDENDA THERE TO.
 2. ALL CONCRETE SHALL BE 4,500 COMPRESSIVE. CONCRETE MATERIALS, PLACEMENT AND FINISHING SHALL CONFORM WITH SECTION 500 OF THE ABOVE REFERENCED NYSDOT STANDARD SPECIFICATIONS.
 3. REINFORCING STEEL FOR CONCRETE SHALL CONFORM WITH SECTION 556 REINFORCING STEEL, TENSILE, TORSION, AND WELDING OF THE ABOVE REFERENCED NYSDOT STANDARD SPECIFICATIONS AND AS SPECIFICALLY CALLED OUT IN THE DRAWINGS.
 4. ALL EXPOSED SURFACES SHALL HAVE A BROOM TEXTURED FINISH AND TOWEL POLISHED. TOWELS SHALL BE PROVIDE MAX 1/4" - 1/2" WIDE SMOOTH TROWEL FINISH AT JOINT.
 5. EXPANSION JOINTS SHALL BE LOCATED A MAXIMUM OF 20' ON CENTER, OR AS INDICATED ON PLANS.
 6. JOINTS SHALL NOT BE LOCATED AT CURB OR CHANGING CURB.
 7. EXPOSED CONCRETE SURFACES SHALL BE TREATED WITH "SEABOND"/"SEABOND" SB-7000 INTENSIFIER BRIGHT PROTECTOR AND SIDEWALK SEALER, OR EQUAL. RATE AND METHOD OF APPLICATION SHALL BE IN ACCORDANCE WITH MANUFACTURER'S RECOMMENDATIONS.
 8. SUBGRADE MATERIAL SHALL CONFORM WITH SECTION 304 OF THE ABOVE REFERENCED NYSDOT STANDARD.
 9. WHERE IT IS NECESSARY TO PLACE FILL FOR PURPOSE OF BRINGING THE SUBGRADE ELEVATION UP TO A SPECIFIED GRADE, THE FILL MATERIAL PLACED SHALL BE IN ACCORDANCE WITH SECTION 203 SUBGRADE ELEVATION AND ELEVATION OF THE ABOVE REFERENCED NYSDOT STANDARD SPECIFICATIONS.
 10. ALL WORK SHALL CONFORM WITH SECTION 608-SIDEWALK, DRIVEWAYS, AND CULVERTS OF THE ABOVE REFERENCED NYSDOT STANDARD SPECIFICATIONS.
 11. SIDEWALK WIDTH SHOWN ON THE PLANS IS TO BE MEASURED FROM THE BACK OF THE CURB.
 12. ALL UNLESS SHOWN OTHERWISE CROSS SLOPE OF 1/4" PER FT. UNLESS OTHERWISE NOTED ON PLAN.



SCALE: NOT TO SCALE



SCALE: NOT TO SCALE



SCALE: NOT TO SCALE

SCALE: NOT TO SCALE

IT IS A VIOLATION OF NEW YORK STATE EDUCATION LAW FOR ANY PERSON TO ALTER THIS DRAWING OR DOCUMENT IN ANY WAY, UNLESS HE OR SHE IS ACTING UNDER THE DIRECTION OF A LICENSED DESIGN PROFESSIONAL (PROFESSIONAL ENGINEER, PROFESSIONAL ARCHITECT OR LANDSCAPE ARCHITECT). IF THIS DRAWING OR DOCUMENT IS ALTERED, THE ALTERING DESIGN PROFESSIONAL SHALL AFFIX TO THE DRAWING OR DOCUMENT HIS OR HER SEAL, THE NOTATION "ALTERED BY" FOLLOWED BY HIS OR HER SIGNATURE, THE DATE OF SUCH ALTERATION, AND A SPECIFIC DESCRIPTION OF THE ALTERATION.

IT IS A VIOLATION OF NEW YORK STATE EDUCATION LAW FOR ANY PERSON TO ALTER THIS DRAWING OR DOCUMENT IN ANY WAY, UNLESS HE OR SHE IS ACTING UNDER THE DIRECTION OF A LICENSED DESIGN PROFESSIONAL (PROFESSIONAL ENGINEER, PROFESSIONAL ARCHITECT OR LANDSCAPE ARCHITECT). IF THIS DRAWING OR DOCUMENT IS ALTERED, THE ALTERING DESIGN PROFESSIONAL SHALL AFFIX TO THE DRAWING OR DOCUMENT HIS OR HER SEAL, THE NOTATION "ALTERED BY" FOLLOWED BY HIS OR HER SIGNATURE, THE DATE OF SUCH ALTERATION, AND A SPECIFIC DESCRIPTION OF THE ALTERATION.

THE
Chazen
COMPANIES®
"Don't let an Employee Chasten"

Office Locations:

☐ Hudson Valley Office:
21 Fox Street
Poughkeepsie, New York 12601
Phone: (845) 454-3980

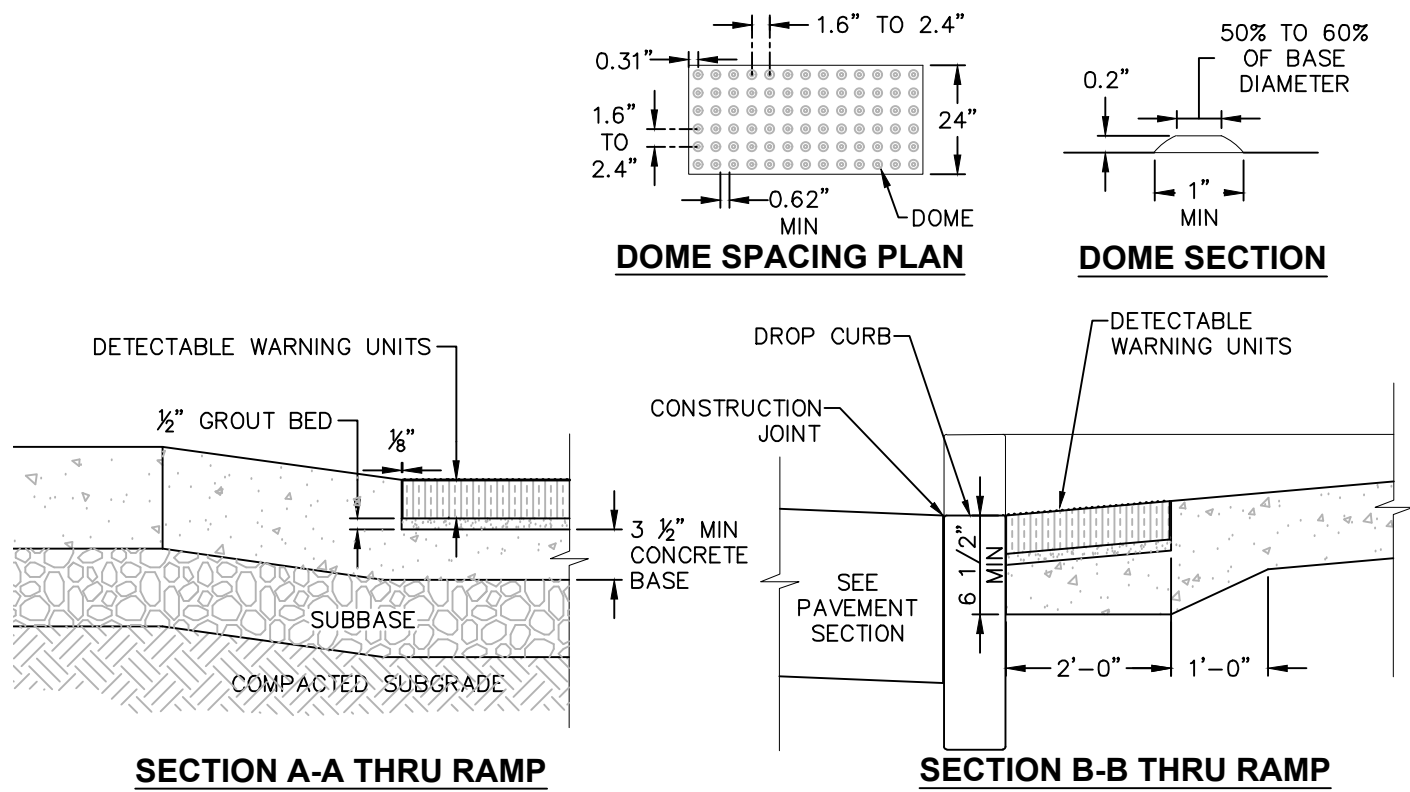
☒ Capital District Office:
547 River Street
Troy, New York 12180
Phone: (518) 273-0055

Tennessee Office:
1033 Demonbreun Street, Suite 300,
Nashville, Tennessee 37203
Phone: (615) 380-1359

1	7/24/24	REVISED PER CLIENT COMMENTS
rev.	date	description

CITY OF BEACON, DUTCHESS COUNTY, NEW YORK

designed LL	checked BB
date 8/29/17	scale AS NOT
project no. 31725.00	
sheet no. C530 6 OF 8	

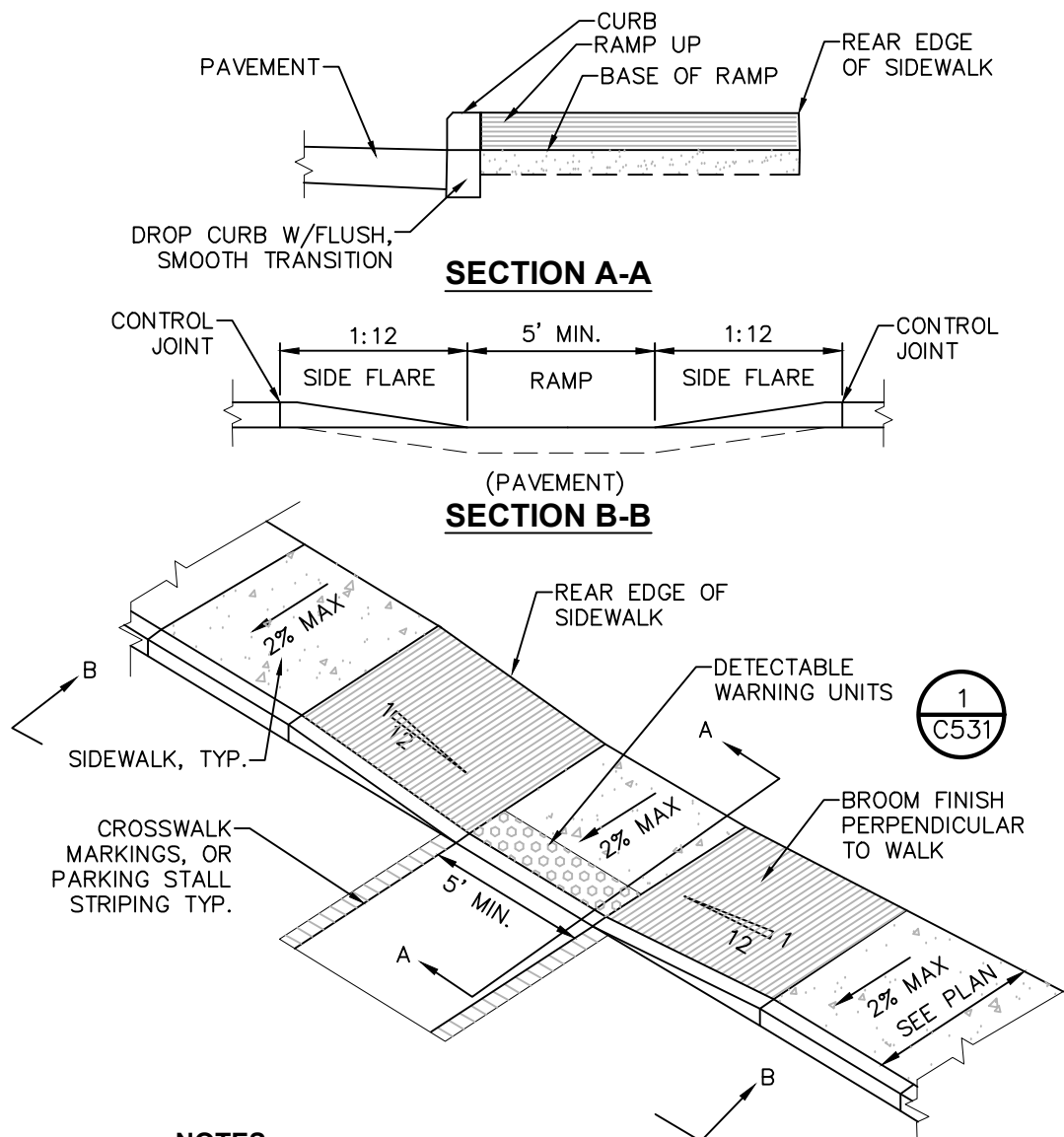


SECTION A-A THRU RAMP

NOTES:

1. DETECTABLE WARNING UNIT SHALL BE ADA COMPLIANT INCLUDING THAT IT SHALL CONTRAST VISUALLY WITH ADJOINING SURFACES.
2. CAST IRON 2" TERRA PAVING TYPE THREE ADA COMPLIANT WARNING PAVER.
3. COORDINATE W/ OWNER FOR COLOR.

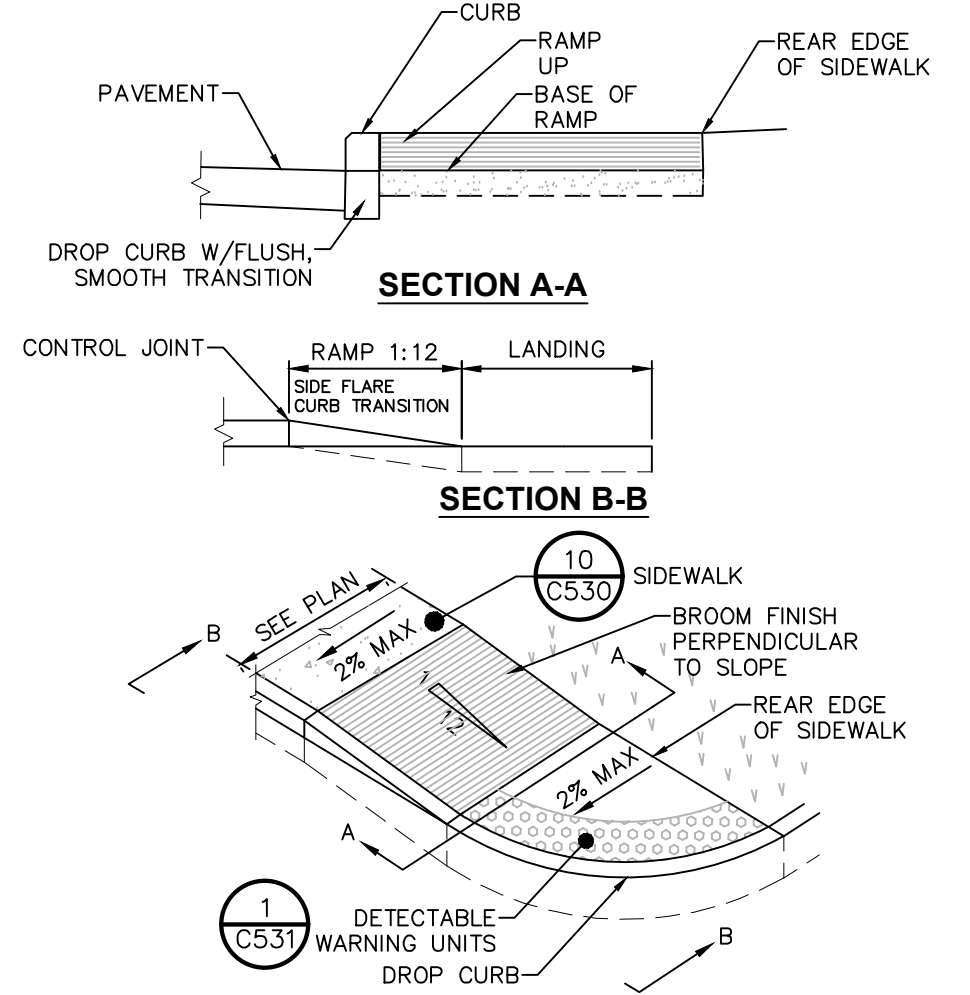
1 DETECTABLE WARNING UNITS FOR RAMPS
SCALE: NOT TO SCALE



NOTES:

1. ALL WORK SHALL CONFORM WITH THE NYSDOT STANDARD SPECIFICATION FOR CONSTRUCTION AND MATERIALS DATED, MAY 1, 2008, AND ALL ADDENDA THERE TO; SPECIFICALLY SECTION 608- SIDEWALKS, DRIVEWAYS, AND BICYCLE PATHS.
2. SLOPE RAMP AND SIDE FLARES AS INDICATED IN THE PLANS OR AS ORDERED BY THE ENGINEER.
3. DETECTABLE WARNING UNITS SHALL BE PROVIDED ON ALL RAMPS IN ACCORDANCE W/ ADA REQUIREMENTS.

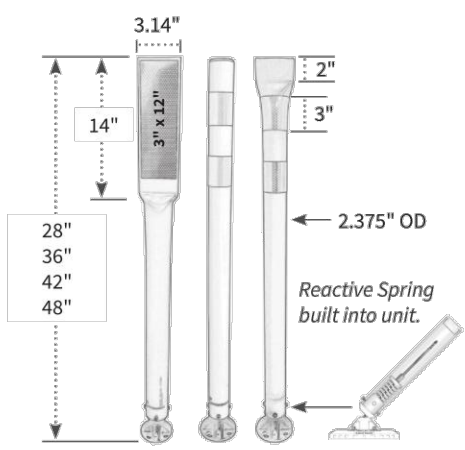
2 PEDESTRIAN RAMP SECTION - DROP CURB
SCALE: NOT TO SCALE



NOTES:

1. ALL WORK SHALL CONFORM WITH THE NYSDOT STANDARD SPECIFICATION FOR CONSTRUCTION AND MATERIALS DATED, MAY 1, 2008, AND ALL ADDENDA THERE TO; SPECIFICALLY SECTION 608- SIDEWALKS, DRIVEWAYS, AND BICYCLE PATHS.
2. SLOPE RAMP AND SIDE FLARES AS INDICATED IN THE PLANS OR AS ORDERED BY THE ENGINEER.
3. DETECTABLE WARNING UNITS SHALL BE PROVIDED ON ALL RAMPS IN ACCORDANCE W/ ADA REQUIREMENTS.

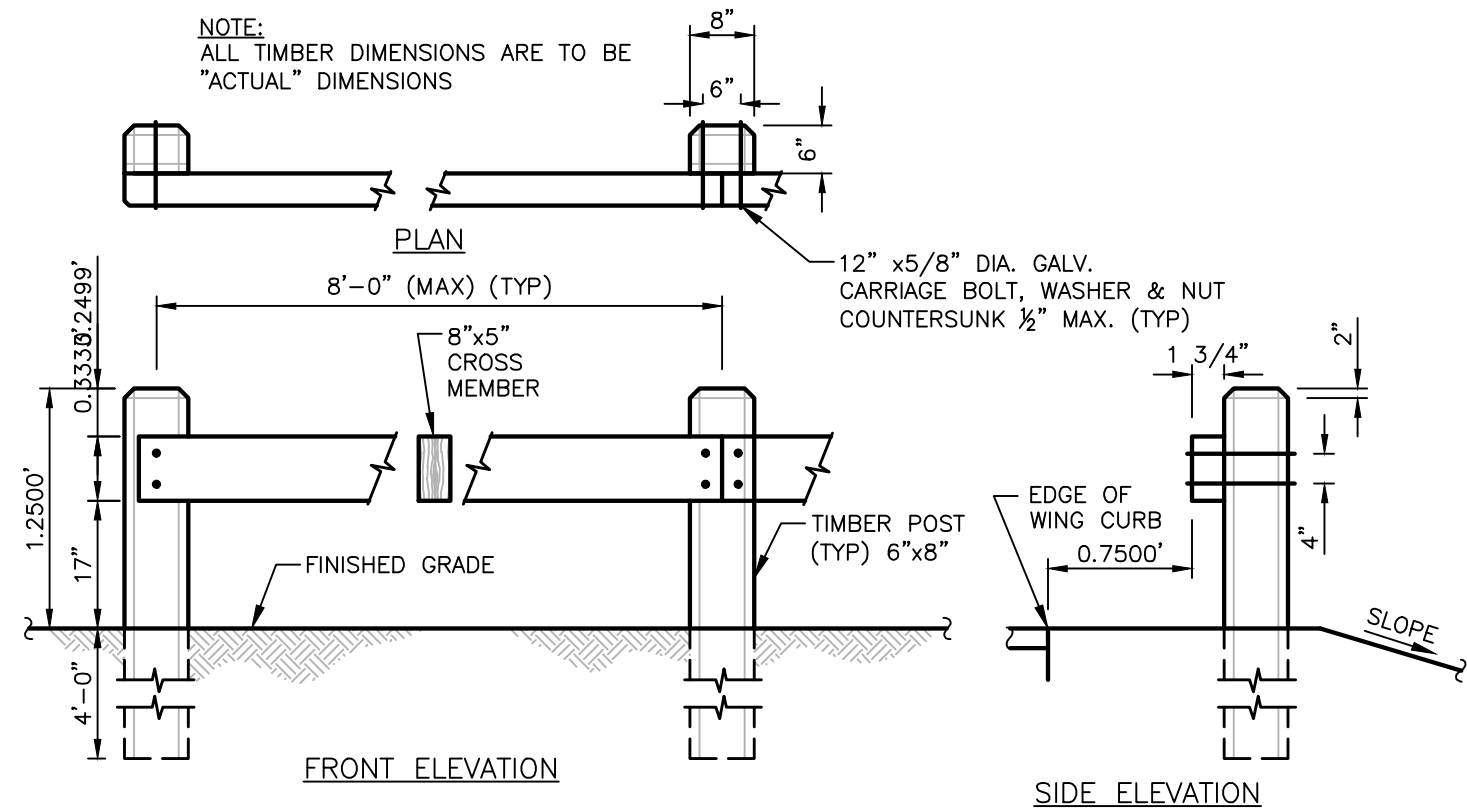
4 PEDESTRIAN RAMP SECTION - DROP CURB
SCALE: NOT TO SCALE



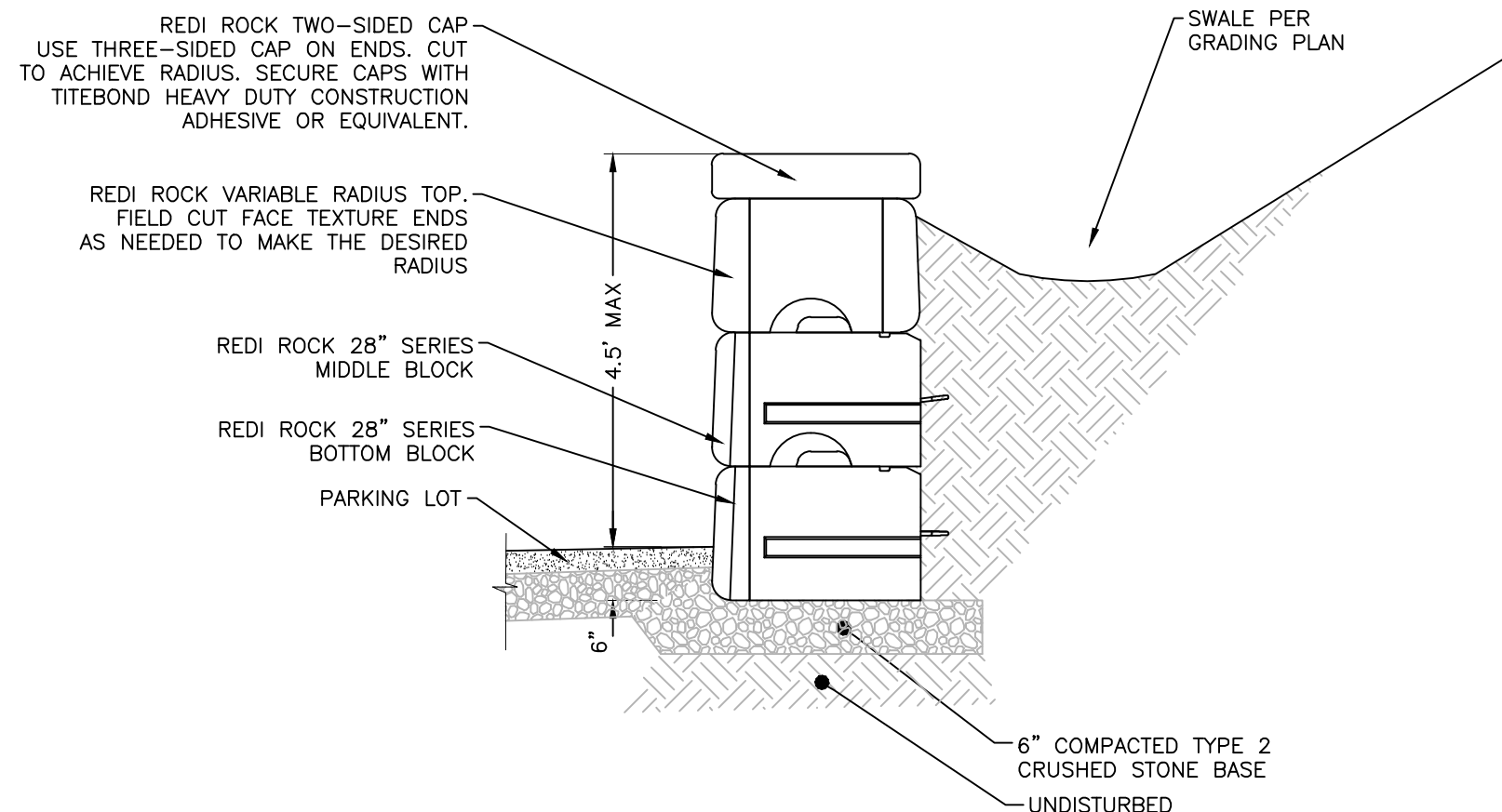
NOTES:

1. BASIS FOR DESIGN: IMPACT TRAFFIC MP FLEX POST SPEC-MP2 OR APPROVED EQUAL
2. 36" HEIGHT, FLEXIBLE HDPE PLASTIC
3. COLOR: GREEN WITH GRAY STRIPING
4. BLACK CAP AT TOP
5. REACTIVE SPRING AT BASE OF UNIT
6. DRIVABLE BASE, BLACK SURFACE MOUNT
7. FIXED BASE, INSTALL PER MANUFACTURER'S SPECIFICATIONS

5 TUBULAR MARKER
SCALE: NTS



6 TIMBER GUIDERAIL
SCALE: NOT TO SCALE



7 TYPICAL WALL SECTION
SCALE: NOT TO SCALE

ISSUED FOR CLIENT REVIEW - NOT FOR CONSTRUCTION

ALL RIGHTS RESERVED. COPY OR REPRODUCTION OF THIS DRAWING OR DOCUMENT, OR ANY PORTION THEREOF, WITHOUT THE EXPRESS WRITTEN PERMISSION OF CHAZEN ENGINEERING, LAND SURVEYING & LANDSCAPE ARCHITECTURE CO., D.P.C. IS PROHIBITED. THIS DRAWING OR DOCUMENT IS NOT INTENDED OR REPRESENTED TO BE SUITABLE FOR ANY PURPOSE OTHER THAN THE SPECIFIC PROJECT, APPLICATION AND SITUATION FOR WHICH IT WAS INTENDED. ANY MODIFICATION OF THIS DRAWING OR DOCUMENT, OR ANY USE FOR ANY PROJECT, APPLICATION OR SITUATION OTHER THAN THAT FOR WHICH IT WAS INTENDED, WILL BE AT USER'S SOLE RISK AND WITHOUT LIABILITY TO CHAZEN ENGINEERING, LAND SURVEYING & LANDSCAPE ARCHITECTURE CO., D.P.C.

IT IS A VIOLATION OF NEW YORK STATE EDUCATION LAW FOR ANY PERSON TO ALTER THIS DRAWING OR DOCUMENT IN ANY WAY, UNLESS HE OR SHE IS ACTING UNDER THE DIRECTION OF A LICENSED DESIGN PROFESSIONAL (PROFESSIONAL ENGINEER, LAND SURVEYOR, ARCHITECT OR LANDSCAPE ARCHITECT). IF THIS DRAWING OR DOCUMENT IS ALTERED, THE ALTERING DESIGN PROFESSIONAL SHALL AFFIX TO THE DRAWING OR DOCUMENT HIS OR HER SEAL, THE NOTATION "ALTERED BY" FOLLOWED BY HIS OR HER SIGNATURE, THE DATE OF SUCH ALTERATION, AND A SPECIFIC DESCRIPTION OF THE ALTERATION.

CHAZEN ENGINEERING, LAND SURVEYING & LANDSCAPE ARCHITECTURE, CO., D.P.C.

THE Chazen COMPANIES
Provided for by Employee Owned

Engineers
Land Surveyors
Planners
Environmental & Safety Professionals
Landscape Architects

Office Locations:

- ☐ Hudson Valley Office:
21 Fox Street
Poughkeepsie, New York 12601
Phone: (845) 454-3980
- ☐ North Country Office:
375 Bay Road
Queensbury, New York 12804
Phone: (518) 812-0513

- ☒ Capital District Office:
547 River Street
Troy, New York 12180
Phone: (518) 273-0055
- ☐ Central NY Office:
721 East Genesee Street
Syracuse, New York 13210
Phone: (315) 251-1013

- Tennessee Office:
1033 Demonbreun Street, Suite 300,
Nashville, Tennessee 37203
Phone: (615) 380-1359

rev.	date	description
1	7/24/2017	REVISED PER CLIENT COMMENTS

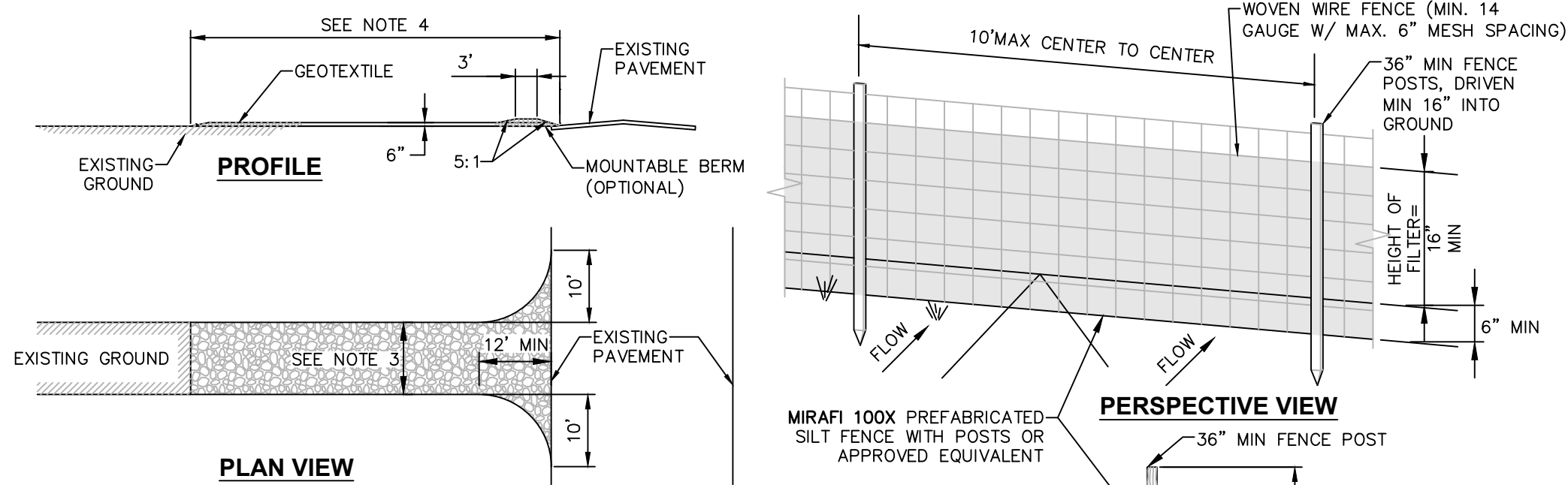
MOUNT BEACON TRAILHEAD PARKING IMPROVEMENTS

SITE DETAILS

CITY OF BEACON, DUTCHESS COUNTY, NEW YORK

designed LL	checked BB
date 8/29/17	scale AS NOTED
project no. 31725.00	
sheet no. C531	

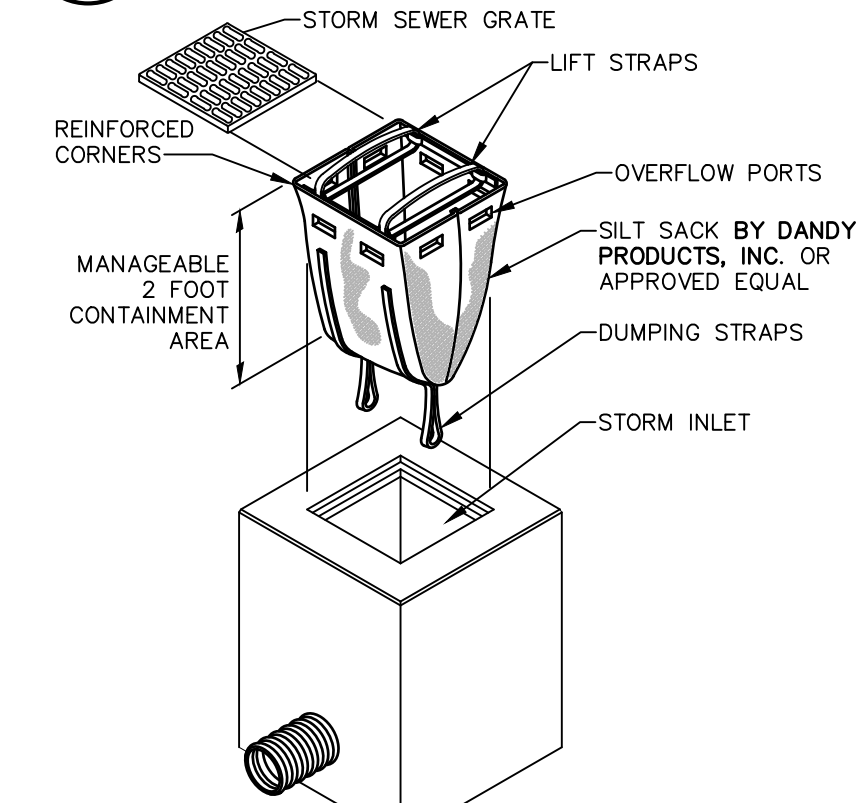
7 OF 8



- CONSTRUCTION ENTRANCE SPECIFICATIONS:**
- STONE SIZE – USE 2" STONE, OR RECLAIMED OR RECYCLED CONCRETE EQUIVALENT.
 - THICKNESS – NOT LESS THAN SIX (6) INCHES.
 - WIDTH – TWELVE (12) FOOT MINIMUM, BUT NOT LESS THAN THE FULL WIDTH AT POINTS WHERE INGRESS OR EGRESS OCCURS. TWENTY FOUR (24) FEET IF SINGLE ENTRANCE TO SITE.
 - LENGTH – NOT LESS THAN 50' (EXCEPT ON A SINGLE RESIDENCE LOT WHERE A 30' MINIMUM LENGTH WOULD APPLY).
 - GEOTEXTILE – WILL BE PLACED OVER THE ENTIRE AREA PRIOR TO PLACING OF STONE.
 - SURFACE WATER – ALL SURFACE WATER FLOWING OR DIVERTED TOWARD CONSTRUCTION ENTRANCES SHALL BE PIPED ACROSS THE ENTRANCE. IF PIPING IS IMPRACTICAL, A MOUNTABLE BERM WITH 5:1 SLOPES WILL BE PERMITTED.
 - MAINTENANCE – THE ENTRANCE SHALL BE MAINTAINED IN A CONDITION WHICH WILL PREVENT TRACKING OR FLOWING OF SEDIMENT ONTO PUBLIC RIGHTS-OF-WAY. THIS MAY REQUIRE PERIODIC TOP DRESSING WITH ADDITIONAL STONE AS CONDITIONS DEMAND AND REPAIR AND/OR CLEANOUT OF ANY MEASURES USED TO TRAP SEDIMENT. ALL SEDIMENT SPILLED, DROPPED, WASHED OR TRACKED ONTO PUBLIC RIGHTS-OF-WAY MUST BE REMOVED IMMEDIATELY.
 - WASHING – WHEELS SHALL BE CLEANED TO REMOVE SEDIMENT PRIOR TO ENTRANCE ONTO PUBLIC RIGHTS-OF-WAY. WHEN WASHING IS REQUIRED, IT SHALL BE DONE ON AN AREA STABILIZED WITH STONE AND WHICH DRAINS INTO AN APPROVED SEDIMENT TRAPPING DEVICE.
 - PERIODIC INSPECTION AND NEEDED MAINTENANCE SHALL BE PROVIDED AFTER EACH RAIN.

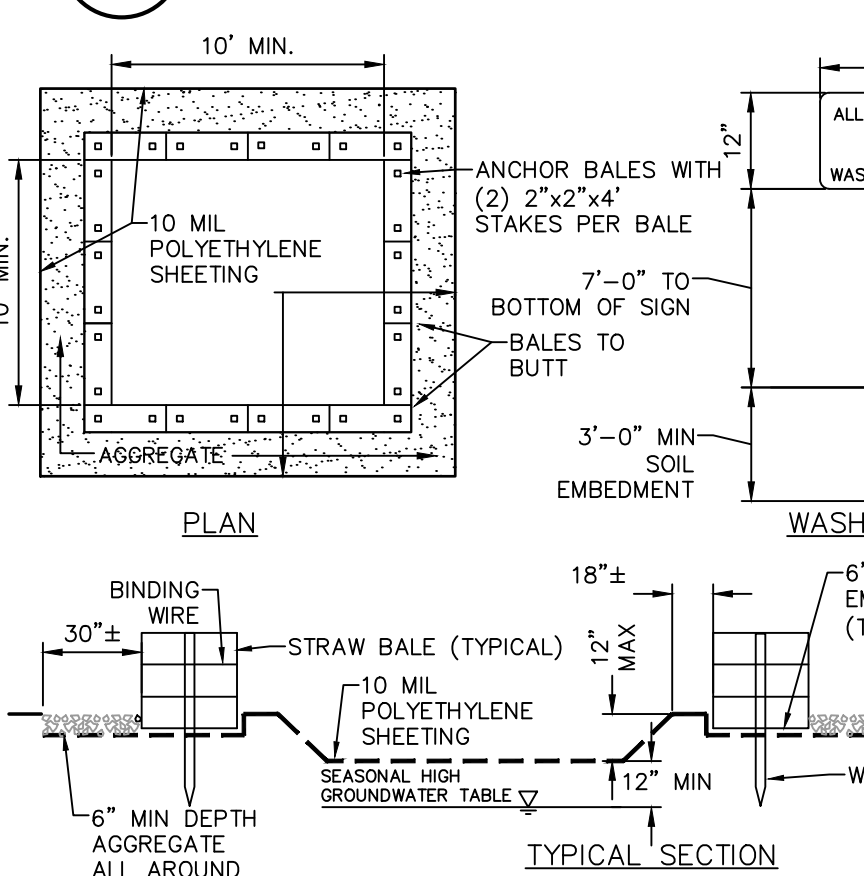
1 STABILIZED CONSTRUCTION ENTRANCE DETAIL

SCALE: NOT TO SCALE



4 SILT SACK DETAIL

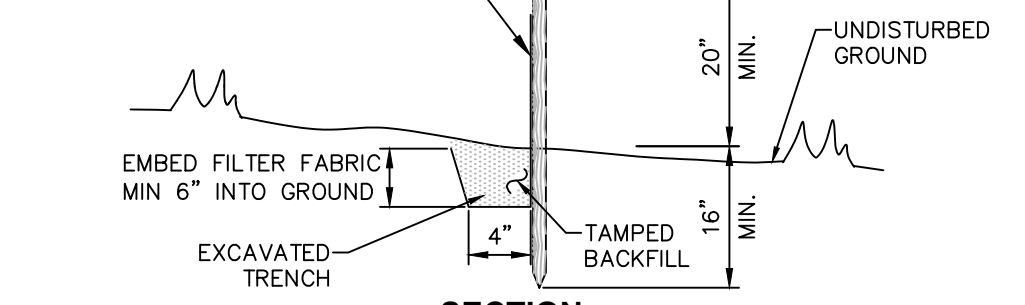
SCALE: NOT TO SCALE



- NOTES:**
- CONTAINMENT MUST BE STRUCTURALLY SOUND AND LEAK FREE AND CONTAIN ALL LIQUID WASTES.
 - CONTAINMENT DEVICES MUST BE OF SUFFICIENT QUANTITY OR VOLUME TO COMPLETELY CONTAIN THE LIQUID WASTES GENERATED BY THE CONSTRUCTION ACTIVITIES.
 - WASHOUT MUST BE CLEANED OR NEW FACILITIES CONSTRUCTED AND READY TO USE ONCE WASHOUT IS 75% FULL. THIS INCLUDES REPLACEMENT OF THE 10 MIL POLYETHYLENE SHEETING.
 - WASHOUT AREA(S) SHALL BE INSTALLED IN A LOCATION EASILY ACCESSIBLE BY CONCRETE TRUCKS.
 - ONE OR MORE AREAS MAY BE INSTALLED ON THE CONSTRUCTION SITE AND MAY BE RELOCATED AS CONSTRUCTION PROGRESSES.
 - AT LEAST WEEKLY, REMOVE ACCUMULATION OF SAND AND AGGREGATE AND DISPOSE OF PROPERLY.

5 CONCRETE WASHOUT AREA DETAIL

SCALE: NOT TO SCALE

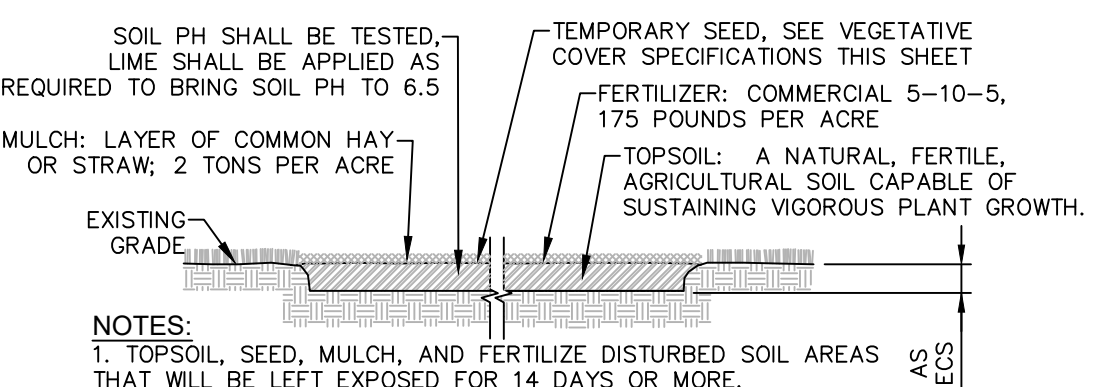


2 SILT FENCE INSTALLATION DETAIL

SCALE: NOT TO SCALE

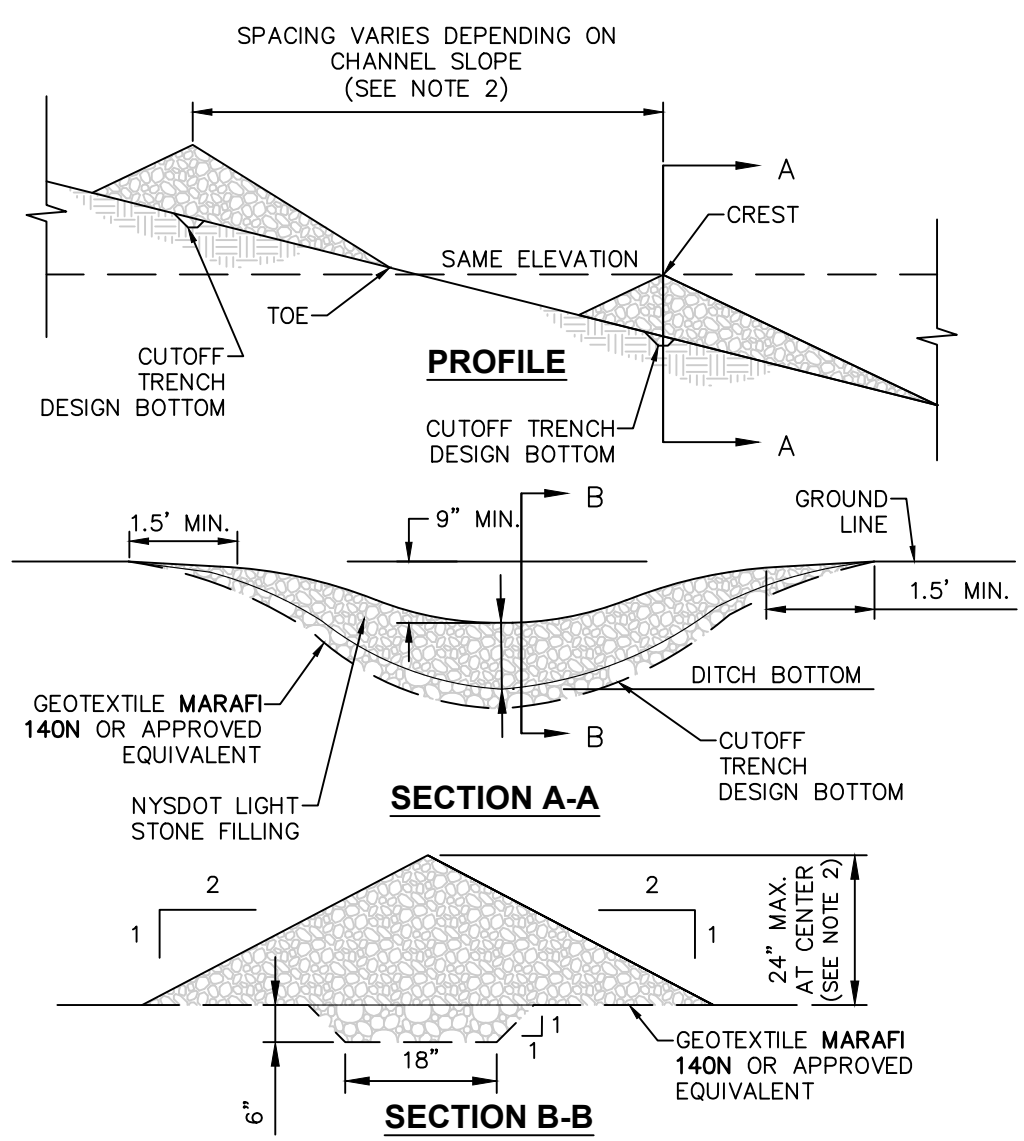
- NOTES:**
- WOVEN WIRE FENCE TO BE FASTENED SECURELY TO FENCE POSTS WITH WIRE TIES OR STAPLES. POSTS SHALL BE STEEL "T" OR "U" TYPE OR HARDWOOD.
 - FILTER FABRIC TO BE FASTENED SECURELY TO WOVEN WIRE FENCE WITH TIES SPACED EVERY 24" AT TOP AND MID SECTION. FENCE SHALL BE WOVEN WIRE, 6" MAX MESH OPENING.
 - WHEN TWO SECTIONS OF FILTER FABRIC ADJOIN EACH OTHER THEY SHALL BE OVERLAPPED BY 6" AND FOLDED.
 - MAINTENANCE SHALL BE PERFORMED AS NEEDED AND MATERIALS REMOVED WHEN "BULGES" DEVELOP IN THE SILT FENCE.
 - MAXIMUM DRAINAGE AREA FOR OVERLAND FLOW TO A SILT FENCE SHALL NOT EXCEED 1/4 ACRE PER 100 FEET OF FENCE.
 - SILT FENCE SHALL BE USED WHERE EROSION COULD OCCUR IN THE FORM OF SHEET EROSION.
 - SILT FENCE SHALL NOT BE USED WHEN A CONCENTRATION OF WATER IS FLOWING TO THE BARRIER.
 - MAXIMUM ALLOWABLE SLOPE LENGTHS CONTRIBUTING RUN-OFF TO A SILT FENCE ARE:

SLOPE STEEPNESS	MAXIMUM SLOPE LENGTH(FT)
2:1	25
3:1	50
4:1	75
5:1 OR FLATTER	100



3 TEMPORARY TOPSOIL, FERTILIZER, SEED & MULCH DETAIL

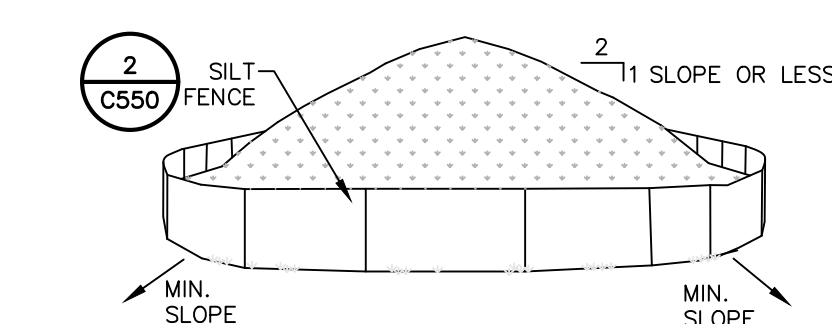
SCALE: NOT TO SCALE



- CONSTRUCTION SPECIFICATIONS:**
- STONE SHALL BE PLACED ON A FILTER FABRIC FOUNDATION TO THE LINES, GRADES AND LOCATIONS SHOWN ON THE PLAN.
 - SET SPACING OF CHECK DAMS IN ACCORDANCE W/ THE FOLLOWING:
- | CHECK DAM SPACING INCREMENT | 2'-6" DEEP DITCH/SWALE W/ 1'-9" HIGH CHECK DAM: (SPACING = 100 FEET PER 100 FEET OF DITCH) |
|-----------------------------|--|
| SLOPE: | SPACING: |
| 0.5% | 305 |
| 1% | 175 |
| 2% | 87 |
| 3% | 58 |
| 4% | 44 |
| 5% | 35 |
- CONTRACTOR TO ADJUST SPACING ACCORDINGLY BASED ON ACTUAL DEPTH & SLOPE OF DITCH.
- EXTEND THE STONE A MINIMUM OF 1.5 FEET BEYOND THE DITCH BANKS TO PREVENT CUTTING AROUND THE DAM.
 - PROTECT THE CHANNEL DOWNSTREAM OF THE LOWEST CHECK DAM FROM SCOUR AND EROSION WITH STONE OR LINER AS APPROPRIATE.
 - ENSURE THAT CHANNEL APPURTENANCES SUCH AS CULVERT ENTRANCES BELOW CHECK DAM ARE NOT SUBJECT TO DAMAGE OR BLOCKAGE FROM DISPLACED STONE.
 - MAXIMUM DRAINAGE AREA IS 2 ACRES.

6 STONE CHECK DAM DETAIL

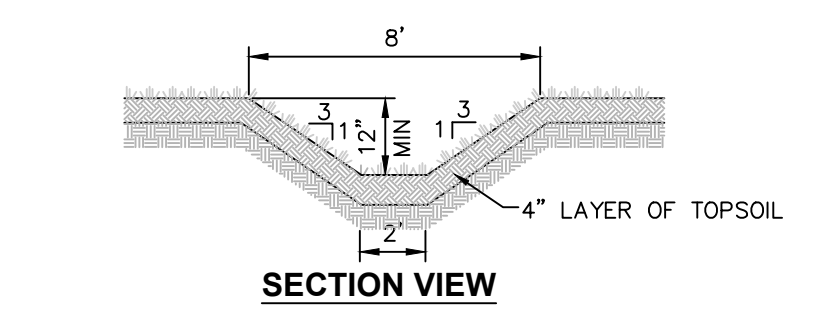
SCALE: NOT TO SCALE



- NOTES:**
- AREA CHOSEN FOR STOCKPILING OPERATIONS SHALL BE DRY AND STABLE.
 - MAXIMUM SLOPE OF STOCKPILE SHALL BE 1V:2H.
 - UPON COMPLETION OF SOIL STOCKPILING, EACH PILE SHALL BE SURROUNDED WITH SILT FENCING, THEN STABILIZED WITH VEGETATION OR COVERED.
 - SEE SPECIFICATIONS FOR INSTALLATION OF SILT FENCE.

7 TEMPORARY SOIL STOCKPILE DETAIL

SCALE: NOT TO SCALE



- NOTES:**
- MINIMUM DEPTH OF SWALE SHALL BE 12".
 - SWALE SHALL BE AT LEAST 6 FEET WIDE AT TOP.
 - SWALE SHALL BE SEEDED AND MULCHED WITH FAST GERMINATING RYE 15 LBS. TO 25 LBS. PER 1,000 SF.
 - SLOPE OF SWALE SHALL BE MINIMUM 2%.

8 PERMANENT GRASS LINED DIVERSION SWALE DETAIL

SCALE: NOT TO SCALE

- MAINTENANCE OF EROSION AND SEDIMENT CONTROL MEASURES:**
- EXISTING EXCESS TOPSOIL SHALL BE REMOVED AND STORED IN TOPSOIL STOCKPILES SUFFICIENTLY REMOVED FROM OTHER EXCAVATION OR DISTURBANCE TO AVOID MIXING. SILT FENCE SHALL BE INSTALLED AROUND TOPSOIL STOCKPILE AREAS.

- STABILIZED CONSTRUCTION ENTRANCE:**
- INSPECT THE ENTRANCE PAD EVERY SEVEN DAYS & AFTER EVERY RAIN EVENT. CHECK FOR MUD, SEDIMENT BUILD-UP AND PAD INTEGRITY. MAKE DAILY INSPECTIONS DURING WET WEATHER. RESHAPE PAD AS NEEDED FOR DRAINAGE AND RUNOFF CONTROL. WASH AND REPLACE STONE AS NEEDED. THE STONE IN THE ENTRANCE SHOULD BE WASHED OR REPLACED WHENEVER THE ENTRANCE FAILS TO REDUCE MUD BEING CARRIED OFF-SITE BY VEHICLES. IMMEDIATELY REMOVE MUD AND SEDIMENT TRACKED OR WASHED ONTO PUBLIC ROADS BY BRUSHING OR SWEEPING. REMOVE TEMPORARY CONSTRUCTION ENTRANCE AS SOON AS THEY ARE NO LONGER NEEDED TO PROVIDE ACCESS TO THE SITE.

- SILT FENCE:**
- INSPECT FOR DAMAGE EVERY SEVEN DAYS & AFTER EVERY RAIN EVENT. MAKE ALL REPAIRS IMMEDIATELY. REMOVE SEDIMENT FROM THE UP-SLOPE FACE OF THE FENCE BEFORE IT ACCUMULATES TO A HEIGHT EQUAL TO 1/3 THE HEIGHT OF THE FENCE. IF FENCE FABRIC TEARS, BEGINS TO DECOMPOSE, OR IN ANY WAY BECOMES INEFFECTIVE, REPLACE THE AFFECTED SECTION OF FENCE IMMEDIATELY.

- SOIL STOCKPILE:**
- INSPECT SEDIMENT CONTROL BARRIERS (SILT FENCE OR HAY BALE) AND VEGETATION FOR DAMAGE EVERY SEVEN DAYS & AFTER EVERY RAIN EVENT. MAKE ALL REPAIRS IMMEDIATELY. REMOVE SEDIMENT FROM THE UP-SLOPE FACE OF THE SEDIMENT CONTROL BARRIER BEFORE IT ACCUMULATES TO A HEIGHT EQUAL TO 1/3 THE HEIGHT OF THE SEDIMENT CONTROL BARRIER. IF SEDIMENT CONTROL BARRIER TEARS, BEGINS TO DECOMPOSE, OR IN ANYWAY BECOMES INEFFECTIVE, REPLACE THE AFFECTED SECTION OF SEDIMENT CONTROL BARRIER IMMEDIATELY. REVEGETATE DISTURBED AREA TO STABILIZE SOIL STOCK PILE. REMOVE THE SEDIMENT CONTROL BARRIER WHEN THE SOIL STOCKPILE HAS BEEN REMOVED.

- DUST CONTROL:**
- SCHEDULE CONSTRUCTION OPERATIONS TO MINIMIZE THE AMOUNT OF DISTURBED AREAS AT ANY ONE TIME DURING THE COURSE OF WORK. APPLY TEMPORARY SOIL STOCKPILE STABILIZATION PRACTICES SUCH AS MULCHING, SEEDING, AND SPRAYING (WATER). STRUCTURAL MEASURES (MULCH, SEEDING) SHALL BE INSTALLED IN DISTURBED AREAS BEFORE SIGNIFICANT BLOWING PROBLEMS DEVELOP. WATER SHALL BE SPRAYED AS NEEDED. REPEAT AS NEEDED, BUT AVOID EXCESSIVE SPRAYING, WHICH COULD CREATE RUNOFF AND EROSION PROBLEMS.

- TEMPORARY SWALE:**
- INSPECT ALL EARTH DIKES EVERY SEVEN DAYS & AFTER EVERY RAIN EVENT. ALL AREAS DAMAGED BY EROSION SHALL BE REPAIRED IMMEDIATELY.

- STORM DRAIN INLET PROTECTION:**
- INSPECT ALL STORM DRAIN INLET PROTECTION DEVICES EVERY SEVEN DAYS & AFTER EVERY RAIN EVENT. MAKE REPAIRS AS NEEDED, REMOVE SEDIMENT FROM THE POOL AREA AS NECESSARY.

GENERAL EROSION AND SEDIMENT CONTROL NOTES:

- ALL EROSION AND SEDIMENT CONTROL MEASURES ARE TO BE IN STRICT COMPLIANCE WITH "NEW YORK STATE STANDARDS AND SPECIFICATIONS FOR EROSION AND SEDIMENT CONTROL", NOVEMBER 2016.
- EXCESS SOIL TO BE STOCKPILED WITHIN THE LIMITS OF SITE DISTURBANCE IF NOT USED IMMEDIATELY FOR GRADING PURPOSES. INSTALL SILT FENCE AROUND SOIL STOCKPILES.
- APPLY SURFACE STABILIZATION AND RESTORATION MEASURES. AREAS UNDERGOING CLEARING OR GRADING AND ANY AREAS DISTURBED BY CONSTRUCTION ACTIVITIES WHERE WORK IS DELAYED, SUSPENDED, OR INCOMPLETE AND WILL NOT BE REDISTURBED FOR 21 DAYS OR MORE SHALL BE STABILIZED WITH TEMPORARY VEGETATIVE COVER WITHIN 14 DAYS AFTER CONSTRUCTION ACTIVITY IN THAT PORTION OF THE SITE HAS CEASED. (SEE SPECIFICATIONS FOR TEMPORARY VEGETATIVE COVER). AREAS UNDERGOING CLEARING OR GRADING AND ANY AREAS DISTURBED BY CONSTRUCTION ACTIVITIES WHERE WORK IS COMPLETE AND WILL NOT BE REDISTURBED SHALL BE STABILIZED AND RESTORED WITH PERMANENT VEGETATIVE COVER AS SOON AS SITE AREAS ARE AVAILABLE AND WITHIN 14 DAYS AFTER WORK IS COMPLETE. (SEE SPECIFICATIONS FOR PERMANENT VEGETATIVE COVER). SEEDING FOR PERMANENT VEGETATIVE COVER SHALL BE WITHIN THE SEASONAL LIMITATIONS. PROVIDE STABILIZATION WITH TEMPORARY VEGETATIVE COVER WITHIN 14 DAYS AFTER WORK IS COMPLETE, FOR SEEDING OUTSIDE PERMITTED SEEDING PERIODS.
- SEEDING AREAS TO BE MULCHED WITH STRAW OR HAY MULCH IN ACCORDANCE WITH VEGETATIVE COVER SPECIFICATIONS.
- THE CONTRACTOR IS RESPONSIBLE FOR THE INSTALLATION AND MAINTENANCE OF ALL EROSION AND SEDIMENT CONTROL MEASURES THROUGHOUT THE COURSE OF CONSTRUCTION.
- THE CONTRACTOR IS RESPONSIBLE FOR CONTROLLING DUST BY SPRINKLING EXPOSED SOIL AREAS PERIODICALLY WITH WATER AS REQUIRED. THE CONTRACTOR IS TO SUPPLY ALL EQUIPMENT AND WATER.
- WHEN ALL DISTURBED AREAS ARE STABLE, ALL TEMPORARY EROSION AND SEDIMENT CONTROL MEASURES SHALL BE REMOVED.

SUN AND PARTIAL SHADE:

AMOUNT BY:	MINIMUM %	% PURITY	% GERMINATION
WEIGHT SPECIES OR VARIETY			
50% KENTUCKY BLUE GRASS*	95%	80%	
20% PERENNIAL RYE	98%	90%	
30% CREEPING RED FESCUE	97%	85%	
100%			

SHADE:

AMOUNT BY:	MINIMUM %	% PURITY	% GERMINATION
WEIGHT SPECIES OR VARIETY			
25% KENTUCKY BLUE GRASS**	95%	80%	
20% PERENNIAL RYE	98%	90%	
20% CREEPING RED FESCUE	97%	85%	
100%			

**SHADE TOLERANT VARIETY

- SEEDING

- APPLY SEED UNIFORMLY BY CYCLONE SEEDER CULTI-PACKER OR HYDRO-SEEDER AT RATE INDICATED.

- ALL SEEDING AREAS SHALL BE PROTECTED FROM EROSION BY ONE OF THE FOLLOWING METHODS:

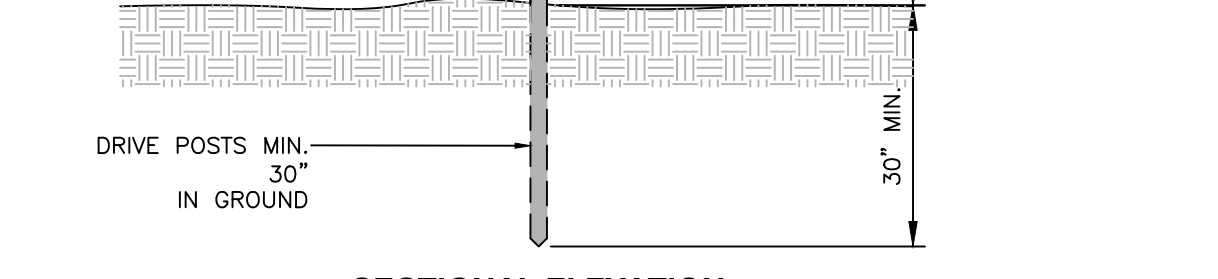
- A UNIFORM BLANKET OF STRAW APPLIED AT A RATE OF 2 TONS /ACRE MIN., TO BE APPLIED ONCE SEEDING IS COMPLETE.

- WOOD FIBER CELLULOSE APPLIED WITH SEED MIX BY HYDROSEDER AT RATE OF 2,000 LBS/ACRE.

- ALL SEEDING SLOPES 3:1 OR GREATER SHALL BE PROTECTED FROM EROSION WITH JUTE MESH OR APPROVED EQUAL.

- IRRIGATE TO FULLY SATURATE SOIL LAYER, BUT NOT TO DISLODGE PLANTING SOIL.

- UNLESS OTHERWISE DIRECTED IN WRITING, SEED FROM MARCH 15TH TO JUNE 15TH, AND FROM AUGUST 15TH TO OCTOBER 15TH.



9 TREE PROTECTION FENCING DETAIL

SCALE: NOT TO SCALE

- TOPSOIL SPECIFICATIONS:**
- EXISTING EXCESS TOPSOIL SHALL BE REMOVED AND STORED IN TOPSOIL STOCKPILES SUFFICIENTLY REMOVED FROM OTHER EXCAVATION OR DISTURBANCE TO AVOID MIXING. SILT FENCE SHALL BE INSTALLED AROUND TOPSOIL STOCKPILE AREAS.

SITE PREPARATION:

- COMPLETE ROUGH GRADING AND FINAL GRADE, ALLOWING FOR DEPTH OF TOPSOIL TO BE ADDED.

- SCARIFY ALL COMPACT, SLOWLY PERMEABLE, MEDIUM AND FINE TEXTURED SUBSOIL AREAS. SCARIFY AT APPROXIMATELY RIGHT ANGLES TO THE SLOPE DIRECTION IN SOIL AREAS THAT ARE STEEPER THAN 5%.

- REMOVE REFUSE, WOODY PLANT PARTS, STONES OVER 3 INCHES IN DIAMETER, AND OTHER LITTER.

TOPSOIL MATERIALS:

- NEW TOPSOIL SHALL BE BETTER THAN OR EQUAL TO THE QUALITY OF THE EXISTING ADJACENT TOPSOIL. IT SHALL MEET THE FOLLOWING CRITERIA:

- ORIGINAL LOAM TOPSOIL, WELL DRAINED HOMOGENEOUS TEXTURE AND OF UNIFORM GRADE, WITHOUT THE ADMIXTURE OF SUBSOIL MATERIAL AND FREE OF DENSE MATERIAL, HARDPAN, CLAY, STONES, SOD OR OTHER OBJECTIONABLE MATERIAL.

- CONTAINING NOT LESS THAN 5% NOR MORE THAN 20% ORGANIC MATTER IN THAT PORTION OF A SAMPLING PASSING A 1/4" SIEVE WHEN DETERMINED BY THE WET COMBUSTION METHOD ON A SAMPLE DRIED AT 105°C.

- CONTAINING A PH VALUE WITHIN THE RANGE OF 6.5 TO 7.5 ON THAT PORTION OF THE SAMPLE WHICH PASSES A 1/4" SIEVE.

- CONTAINING THE FOLLOWING WASHED GRADATIONS:

SIEVE DESIGNATION	% PASSING
1	100
1/4"	97-100
No 200	20-60

APPLICATION AND GRADING:

- TOPSOIL SHALL BE DISTRIBUTED TO A UNIFORM DEPTH OF 4" OVER THE AREA. IT SHALL NOT BE PLACED WHEN IT IS PARTLY FROZEN, MUDDY, OR ON FROZEN SLOPES OR OVER ICE, SNOW, OR STANDING WATER.

- TOPSOIL PLACED AND GRADED ON SLOPES STEEPER THAN 5% SHALL BE PROMPTLY FERTILIZED, SEEDING, MULCHED AND STABILIZED BY "TRACKING" WITH SUITABLE EQUIPMENT.

VEGETATIVE COVER SPECIFICATIONS:

TEMPORARY VEGETATIVE COVER (DURING CONSTRUCTION):

- SITE PREPARATION

- (SAME AS PERMANENT VEGETATIVE COVER)

- SEED MIX: (APPLY AT RATE OF 3 TO 4 LBS PER 1000 SF)

AMOUNT BY:	MINIMUM %	% PURITY	% GERMINATION
WEIGHT SPECIES OR VARIETY			
100% ANNUAL RYEGRASS	98%	90%	

- SEEDING

- (SAME AS PERMANENT VEGETATIVE COVER)

PERMANENT VEGETATIVE COVER (AFTER CONSTRUCTION):

- SITE PREPARATION

- BRING AREA TO BE SEEDING TO REQUIRED GRADE. A MINIMUM OF 4" OF TOPSOIL IS REQUIRED.

- PREPARE SEEDBED BY LOOSENING SOIL TO A DEPTH OF 4 INCHES.

- REMOVE ALL STONES OVER 1 INCH IN DIAMETER, STICKS AND FOREIGN MATTER FROM THE SURFACE.

- TO PH OF 6.5.

- FERTILIZER: USE 5-10-5 (NPK) OR EQUIVALENT. APPLY AT RATE OF 4 LBS/1000 SF.

- INCORPORATE LIME AND FERTILIZER IN THE TOP 4 INCHES OF TOPSOIL.

- SMOOTH AND FIRM THE SEEDBED.

- SEED MIXTURE FOR USE ON LAWN AREAS:

- PROVIDE FRESH, CLEAN, NEW-CROP SEED MIXED IN THE PROPORTIONS SPECIFIED FOR SPECIES AND VARIETY, AND CONFORMING TO FEDERAL AND STATE STANDARDS.

LAWN SEED MIX: (APPLY AT RATE OF 5 TO 6 LBS PER 1000 SF)

SUN AND PARTIAL SHADE:

AMOUNT BY:	MINIMUM %	% PURITY	% GERMINATION
WEIGHT SPECIES OR VARIETY			
50% KENTUCKY BLUE GRASS*	95%	80%	
20% PERENNIAL RYE	98%	90%	
30% CREEPING RED FESCUE	97%	85%	
100%			

SHADE:

AMOUNT BY:	MINIMUM %	% PURITY	% GERMINATION
WEIGHT SPECIES OR VARIETY			
25% KENTUCKY BLUE GRASS**	95%	80%	
20% PERENNIAL RYE	98%	90%	
20% CREEPING RED FESCUE	97%	85%	
100%			

**SHADE TOLERANT VARIETY

- SEEDING

- APPLY SEED UNIFORMLY BY CYCLONE SEEDER CULTI-PACKER OR HYDRO-SEEDER AT RATE INDICATED.

- ALL SEEDING AREAS SHALL BE PROTECTED FROM EROSION BY ONE OF THE FOLLOWING METHODS:

- A UNIFORM BLANKET OF STRAW APPLIED AT A RATE OF 2 TONS /ACRE MIN., TO BE APPLIED ONCE SEEDING IS COMPLETE.

- WOOD FIBER CELLULOSE APPLIED WITH SEED MIX BY HYDROSEDER AT RATE OF 2,000 LBS/ACRE.

- ALL SEEDING SLOPES 3:1 OR GREATER SHALL BE PROTECTED FROM EROSION WITH JUTE MESH OR APPROVED EQUAL.

- IRRIGATE TO FULLY SATURATE SOIL LAYER, BUT NOT TO DISLODGE PLANTING SOIL.

- UNLESS OTHERWISE DIRECTED IN WRITING, SEED FROM MARCH 15TH TO JUNE 15TH, AND FROM AUGUST 15TH TO OCTOBER 15TH.

ISSUED FOR CLIENT REVIEW - NOT FOR CONSTRUCTION

ALL RIGHTS RESERVED. COPY OR REPRODUCTION OF THIS DRAWING OR DOCUMENT, OR ANY PORTION THEREOF, WITHOUT THE EXPRESS WRITTEN PERMISSION OF CHAZEN ENGINEERING, LAND SURVEYING & LANDSCAPE ARCHITECTURE CO., D.P.C. IS PROHIBITED. THIS DRAWING OR DOCUMENT IS NOT INTENDED OR REPRESENTED TO BE SUITABLE FOR ANY PURPOSE OTHER THAN THE SPECIFIC PROJECT, APPLICATION AND SITUATION FOR WHICH IT WAS INTENDED. ANY MODIFICATION OF THIS DRAWING OR DOCUMENT, OR ANY USE FOR ANY PROJECT, APPLICATION OR SITUATION OTHER THAN THAT FOR WHICH IT WAS INTENDED, WILL BE AT USER'S SOLE RISK AND WITHOUT LIABILITY TO CHAZEN ENGINEERING, LAND SURVEYING & LANDSCAPE ARCHITECTURE CO., D.P.C.

IT IS A VIOLATION OF NEW YORK STATE EDUCATION LAW FOR ANY PERSON TO ALTER THIS DRAWING OR DOCUMENT IN ANY WAY, UNLESS HE OR SHE IS ACTING UNDER THE DIRECTION OF A LICENSED DESIGN PROFESSIONAL (PROFESSIONAL ENGINEER, LAND SURVEYOR, ARCHITECT OR LANDSCAPE ARCHITECT). IF THIS DRAWING OR DOCUMENT IS ALTERED, THE ALTERING DESIGN PROFESSIONAL SHALL AFFIX TO THE DRAWING OR DOCUMENT HIS OR HER SEAL, THE NOTATION "ALTERED BY" FOLLOWED BY HIS OR HER SIGNATURE, THE DATE OF SUCH ALTERATION, AND A SPECIFIC DESCRIPTION OF THE ALTERATION.

CHAZEN ENGINEERING, LAND SURVEYING & LANDSCAPE ARCHITECTURE, CO., D.P.C.

- Office Locations:**
- Hudson Valley Office:
21 Fox Street
Poughkeepsie, New York 12601
Phone: (845) 454-3980
 - North Country Office:
375 Bay Road
Queensbury, New York 12804
Phone: (518) 812-0513
 - Capital District Office:
547 River Street
Troy, New York 12180
Phone: (518) 273-0055
 - Central NY Office:
721 East Genesee Street
Syracuse, New York 13210
Phone: (315) 251-1013
 - Tennessee Office:
1033 Demonbreun Street, Suite 300,
Nashville, Tennessee 37203
Phone: (615) 380-1359

1	7/24/2017	REVISED PER CLIENT COMMENTS	description
rev.	date		