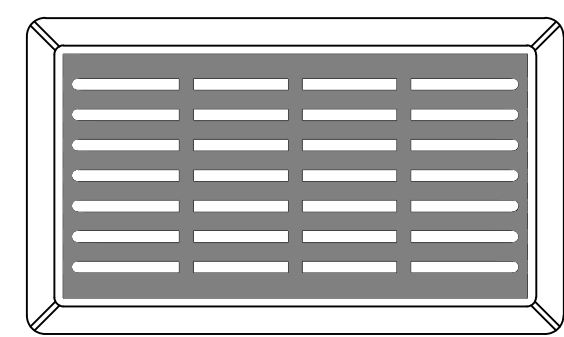
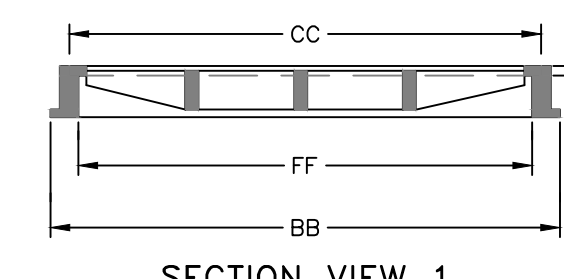


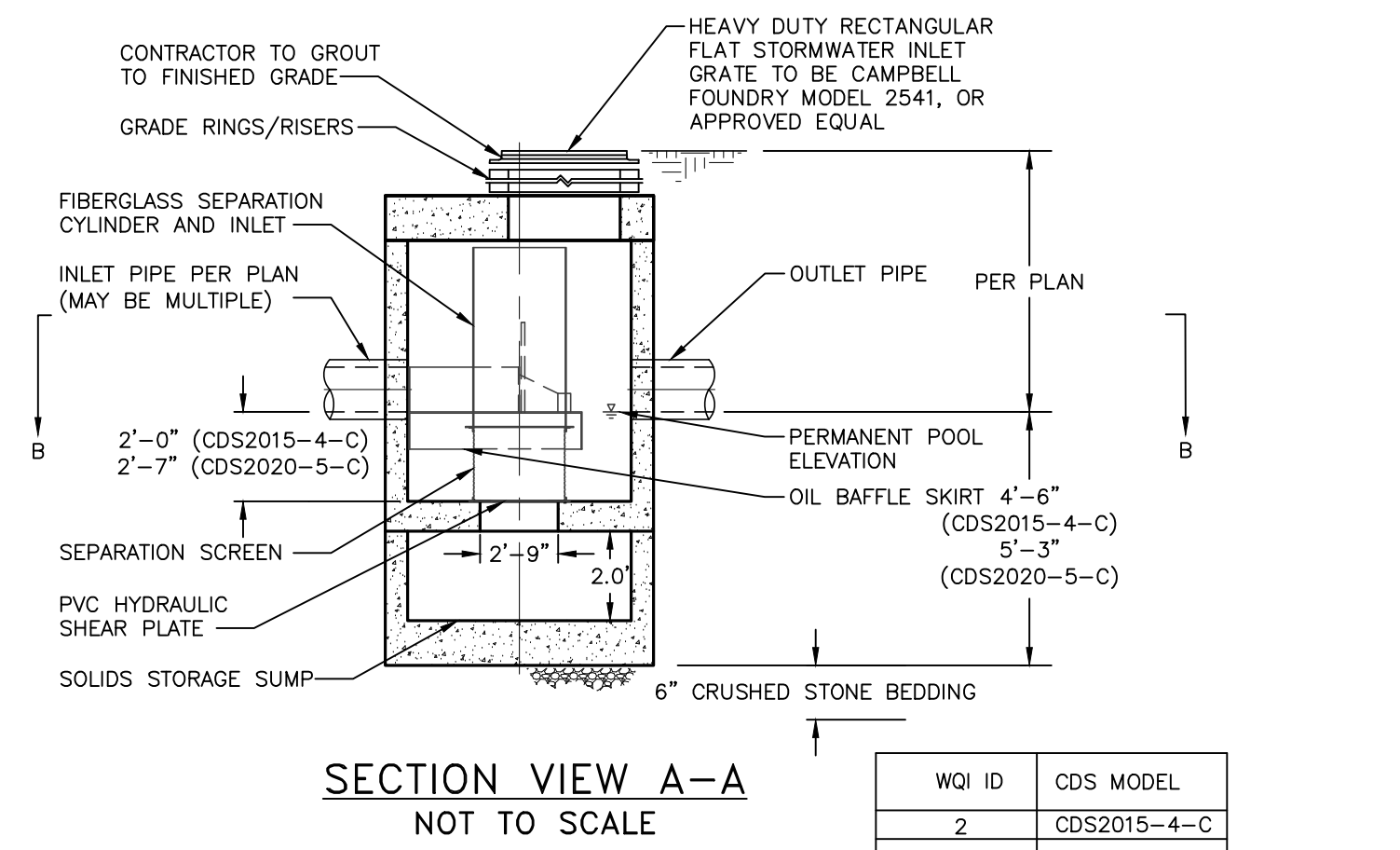
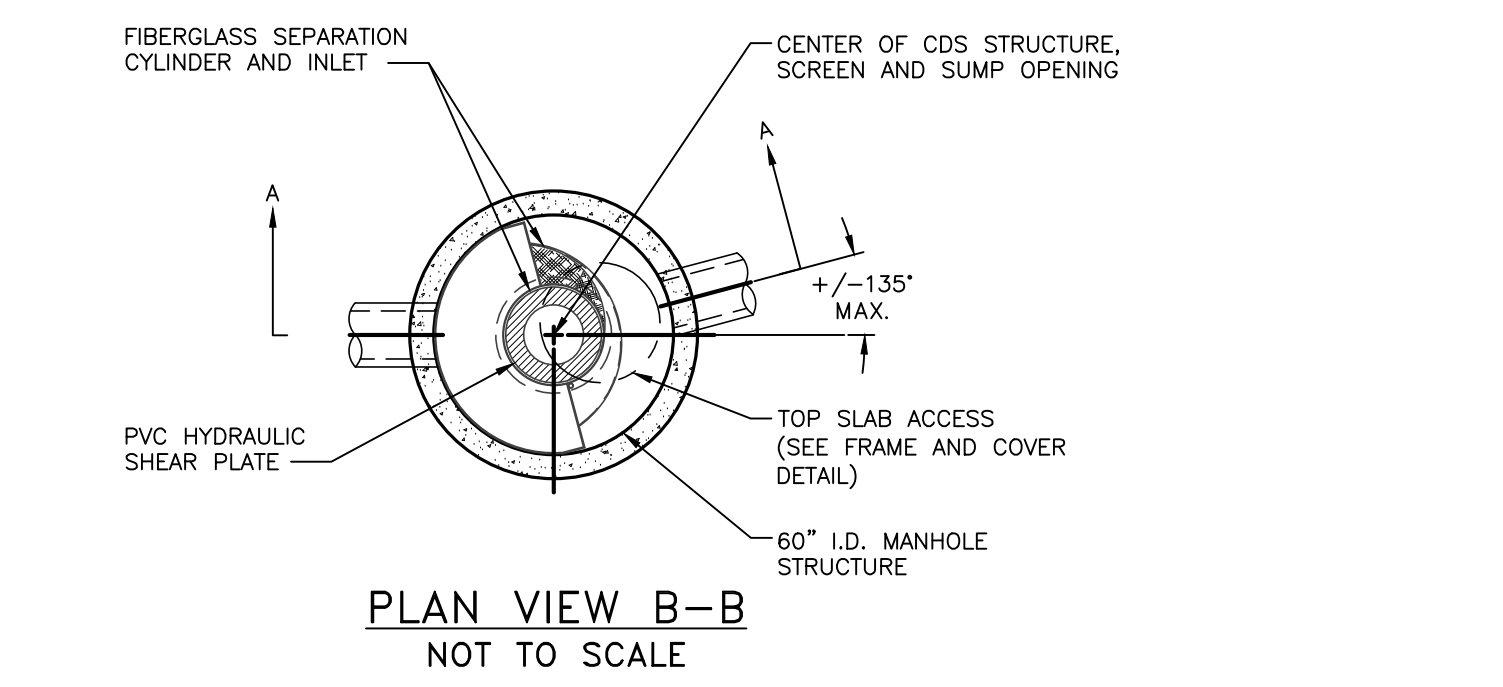
CAST IRON STORMWATER CURB INLET GRATE DETAIL  
NOT TO SCALE



CAST IRON STORMWATER FLAT INLET GRATE DETAIL  
NOT TO SCALE

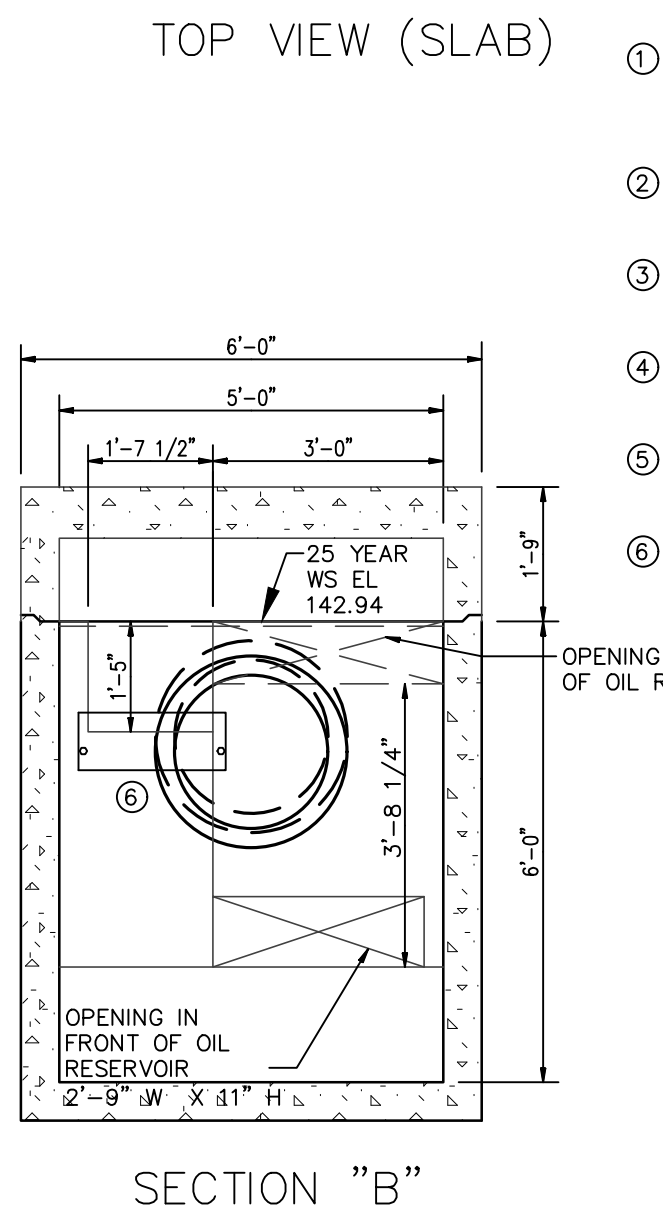
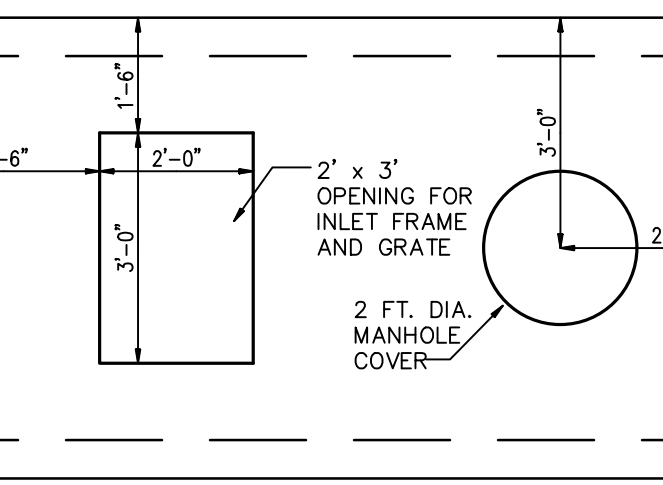
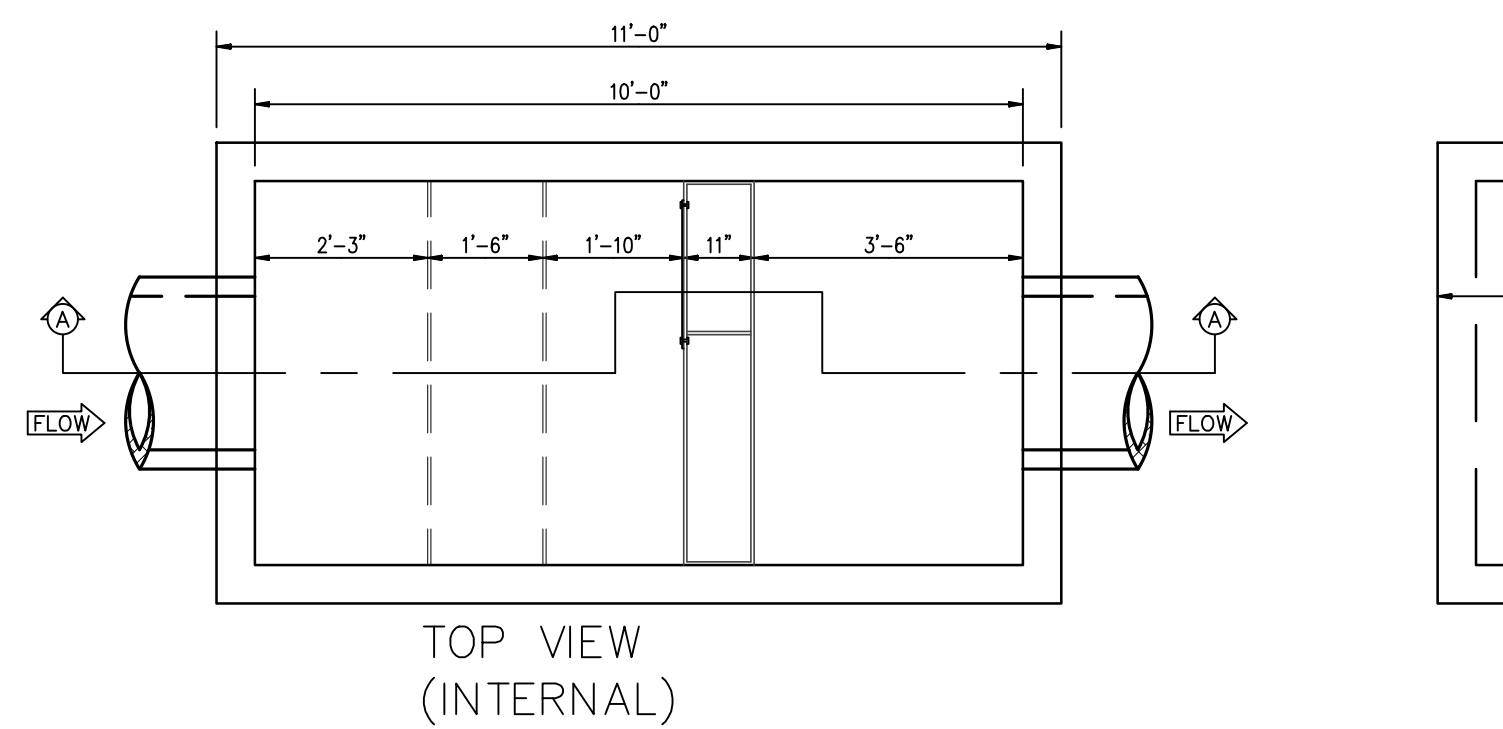


CAST IRON STORMWATER FLAT INLET GRATE DETAIL  
NOT TO SCALE

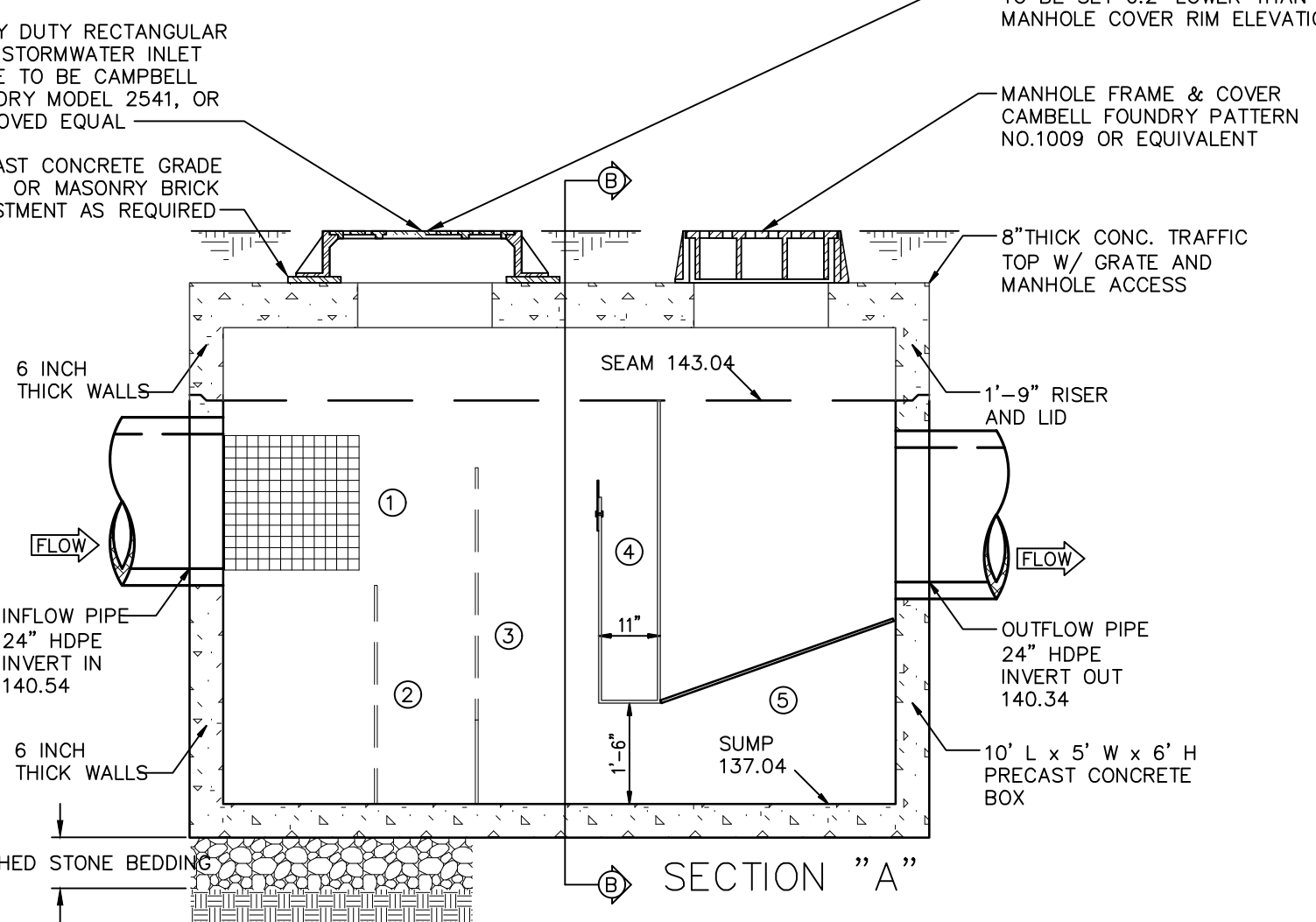


WQ2 CDS® PRE-TREATMENT UNIT DETAIL  
NOT TO SCALE

WQ2 CDS® PRE-TREATMENT UNIT DETAIL  
NOT TO SCALE

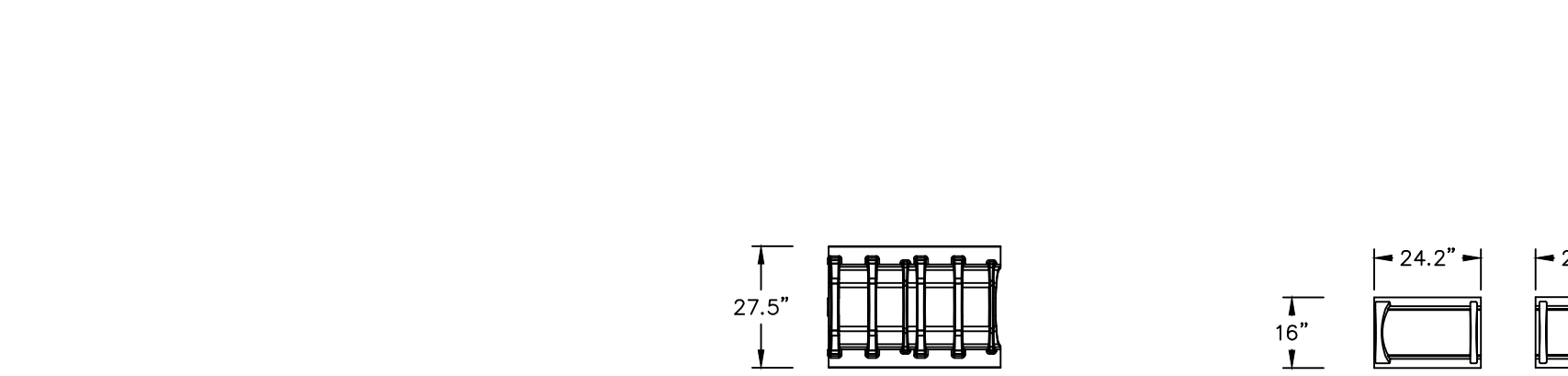
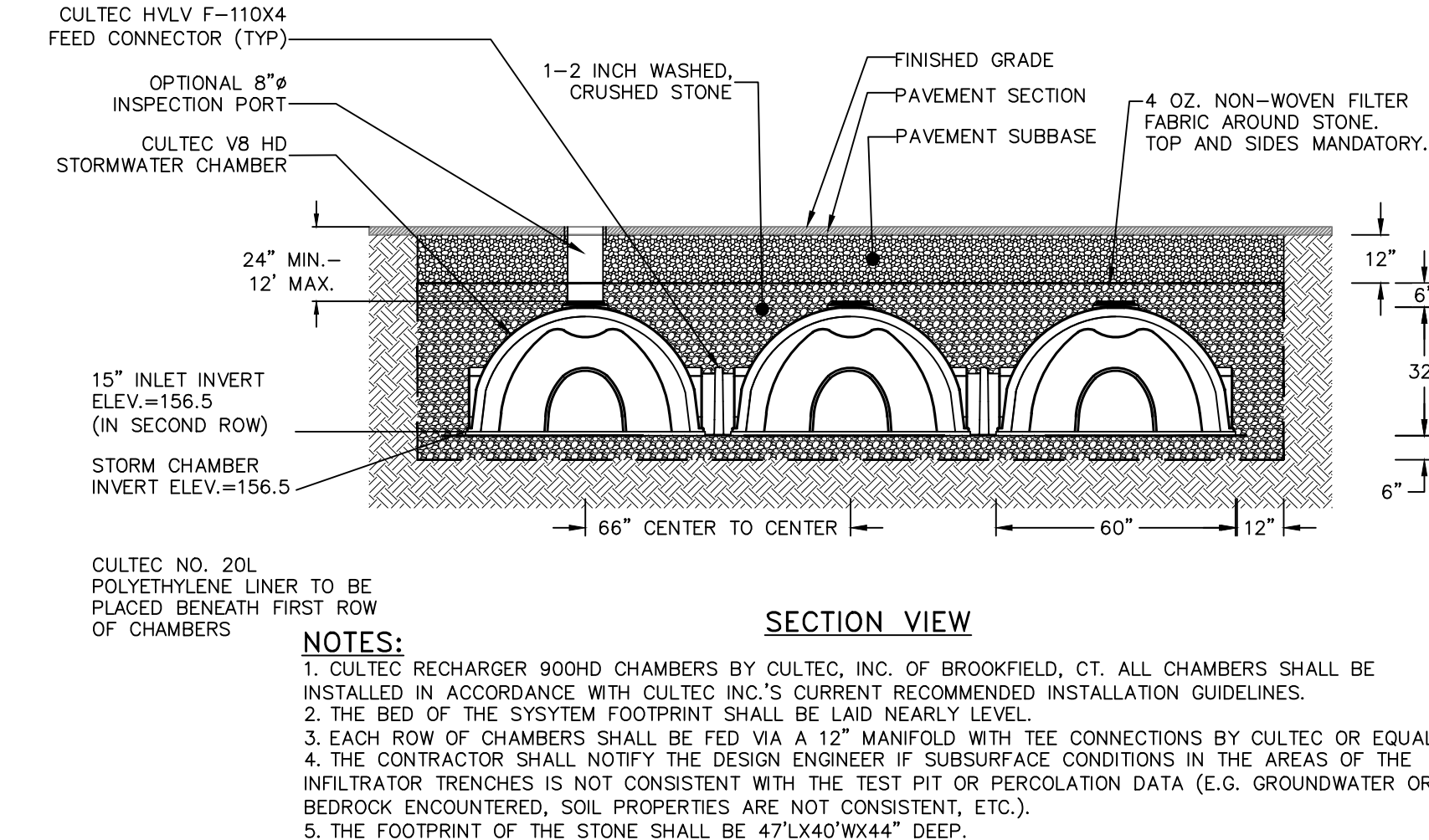


SECTION "B"



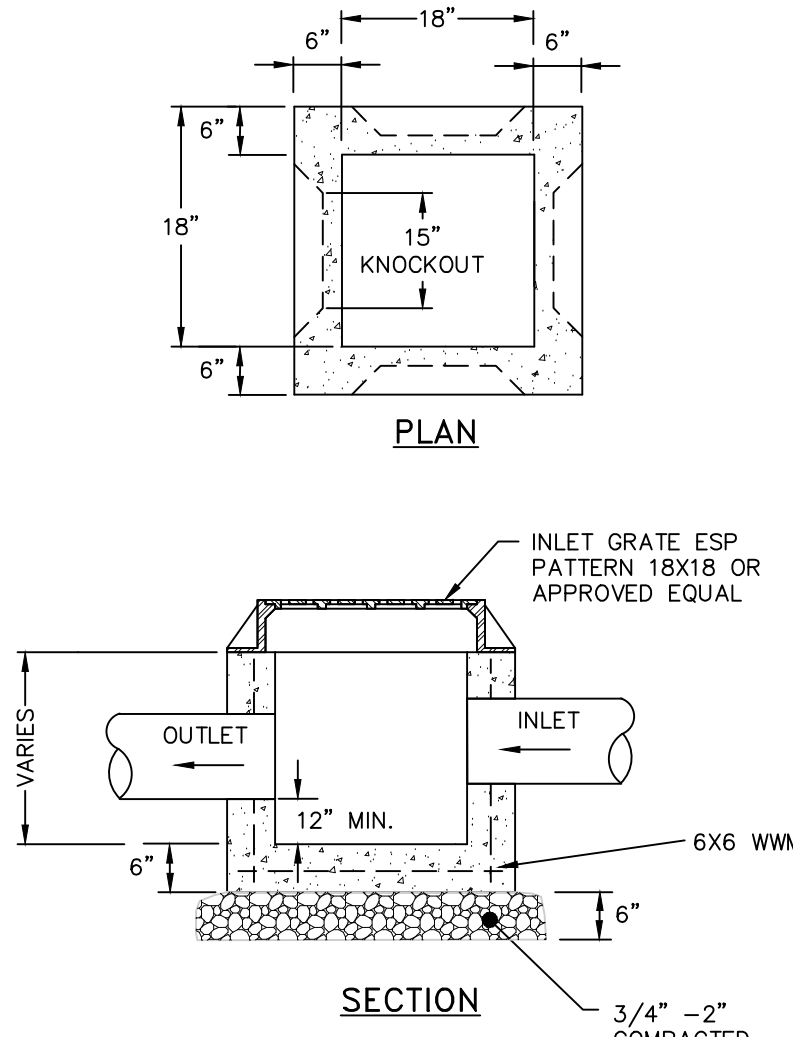
WQ1 DETAIL  
NOT TO SCALE

WQ1 DETAIL  
NOT TO SCALE



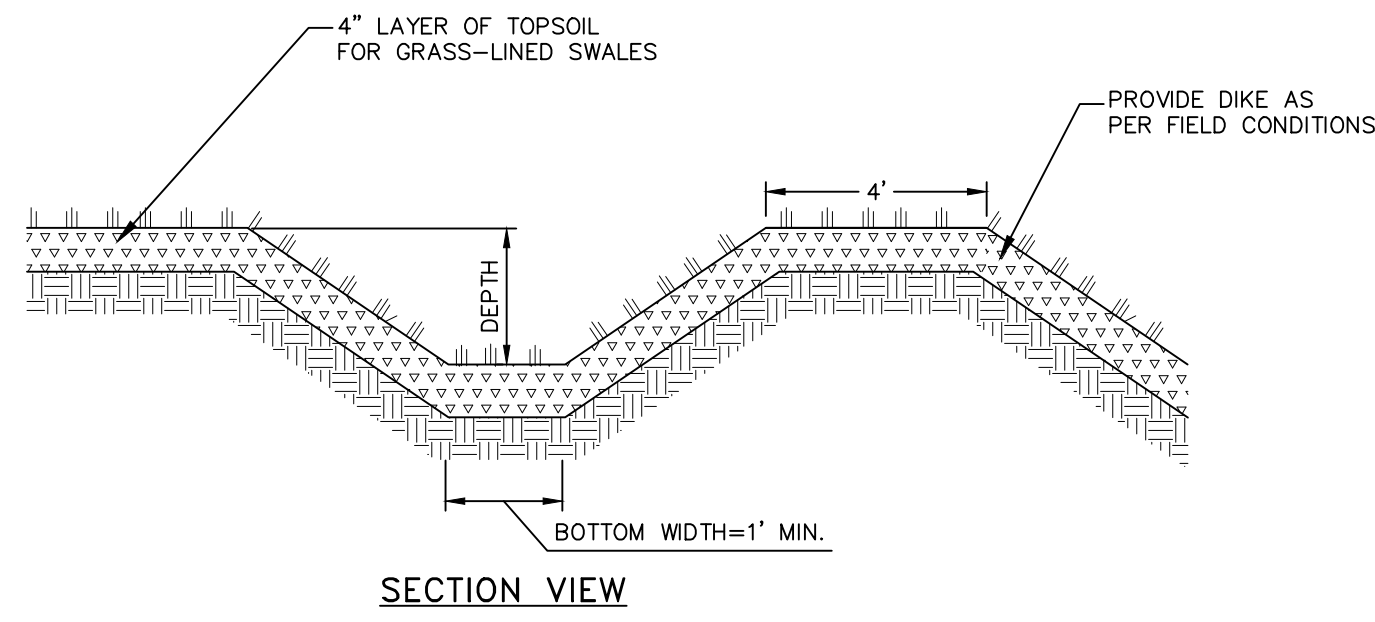
STORMWATER MANHOLE DETAIL  
NOT TO SCALE

STORMWATER MANHOLE DETAIL  
NOT TO SCALE

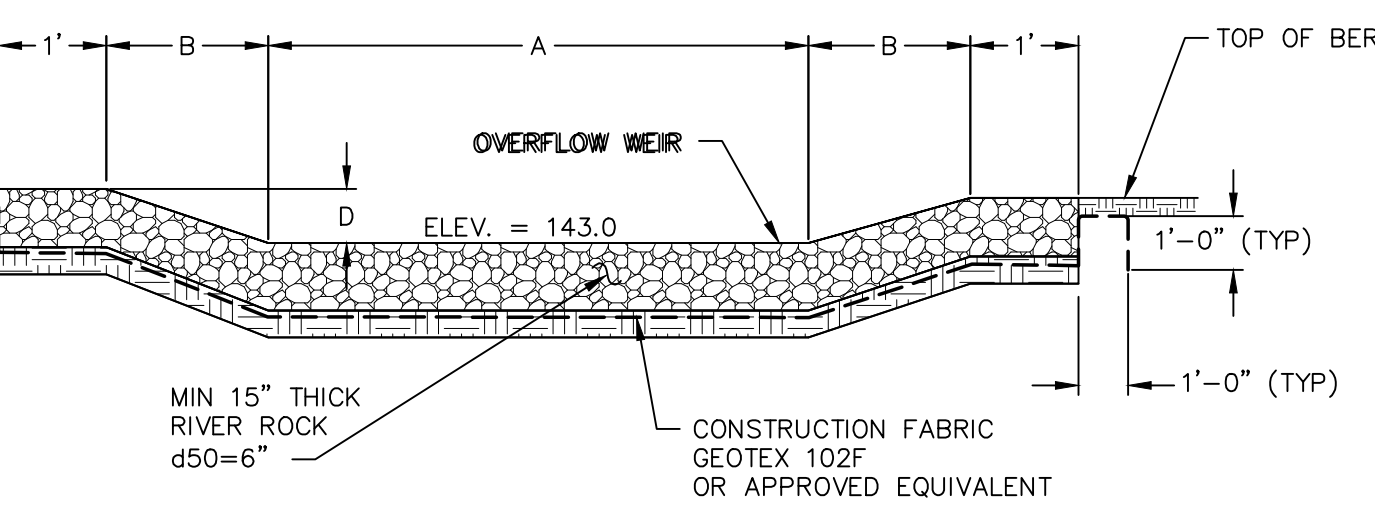


PRE-CAST CONCRETE YARD INLET DETAIL  
NOT TO SCALE

PRE-CAST CONCRETE YARD INLET DETAIL  
NOT TO SCALE

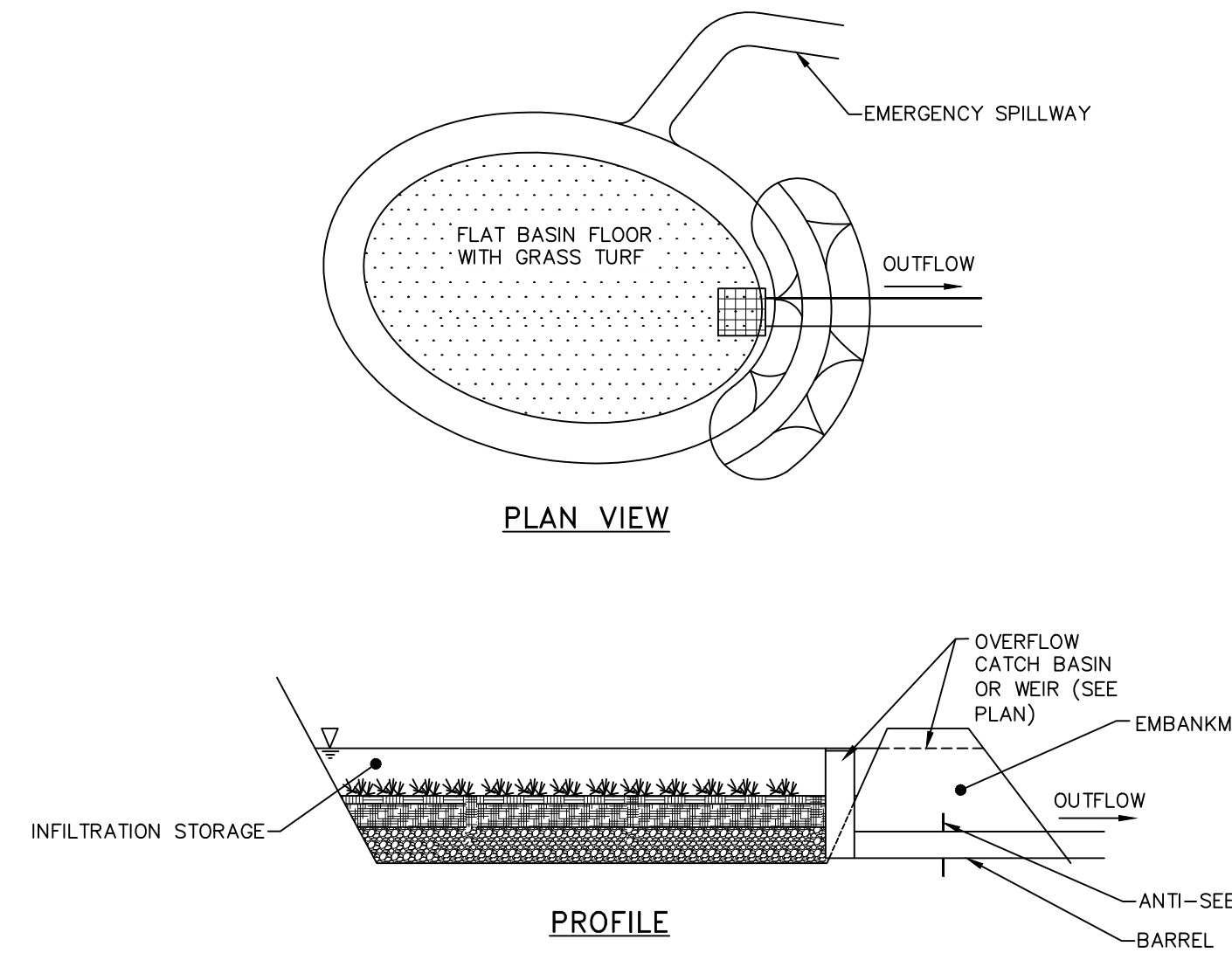


TEMPORARY GRASS LINED SWALE/DIKE DETAIL  
NOT TO SCALE



TEMPORARY GRASS LINED SWALE/DIKE DETAIL  
NOT TO SCALE

TEMPORARY GRASS LINED SWALE/DIKE DETAIL  
NOT TO SCALE

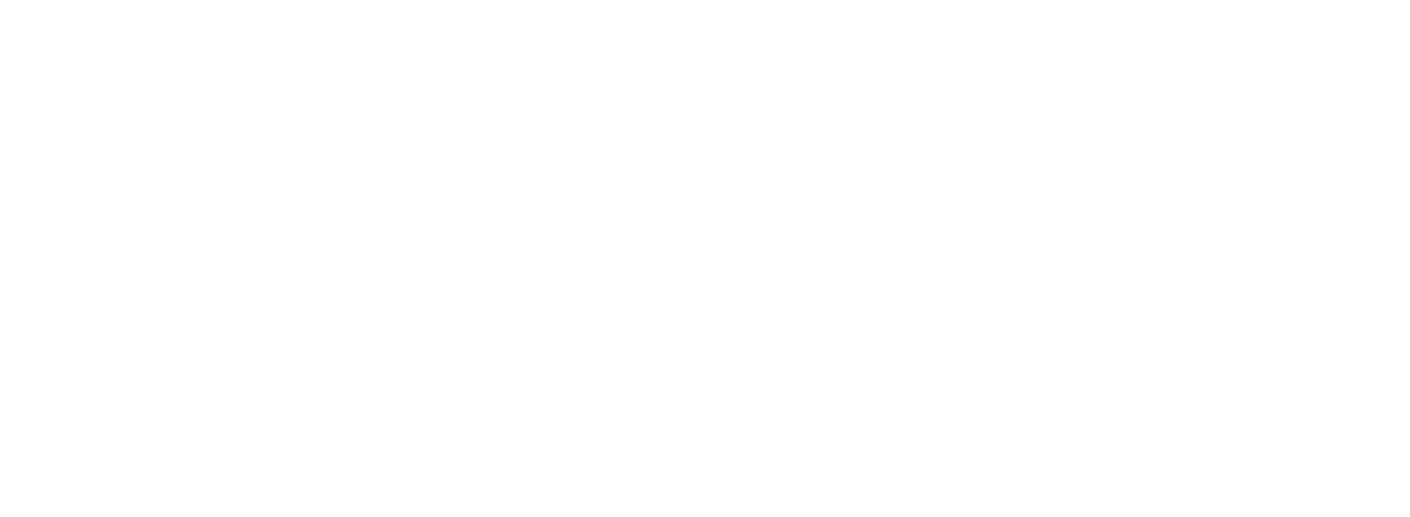


TYPICAL INFILTRATION BASIN DETAIL  
NOT TO SCALE

TYPICAL INFILTRATION BASIN DETAIL  
NOT TO SCALE

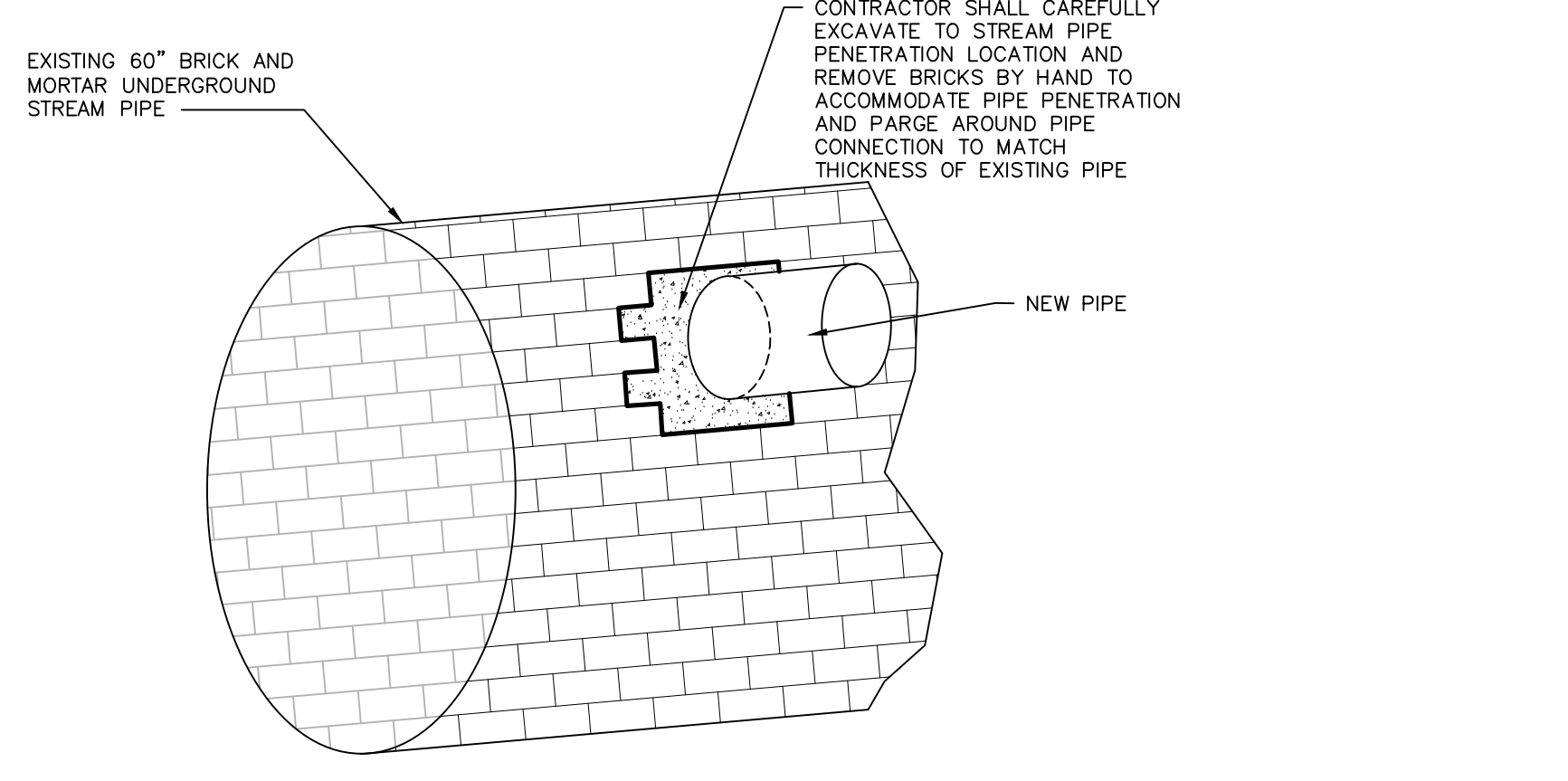


TYPICAL INFILTRATION BASIN DETAIL  
NOT TO SCALE



TYPICAL INFILTRATION BASIN DETAIL  
NOT TO SCALE

TYPICAL INFILTRATION BASIN DETAIL  
NOT TO SCALE



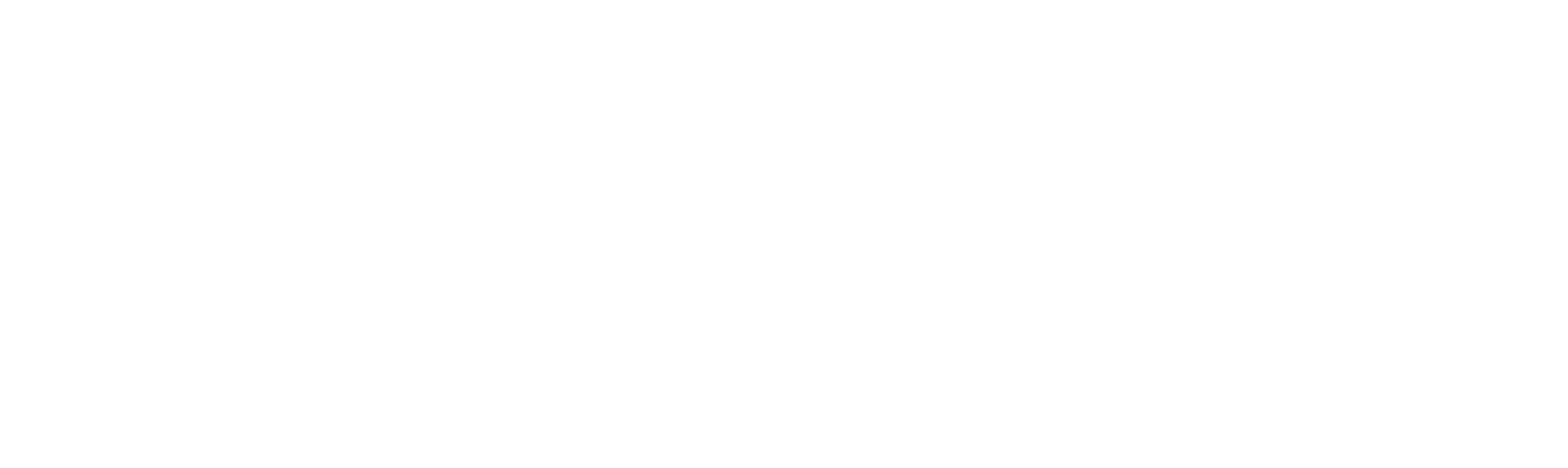
STORMWATER PIPE CONNECTION TO U.G. STREAM DETAIL  
NOT TO SCALE

STORMWATER PIPE CONNECTION TO U.G. STREAM DETAIL  
NOT TO SCALE

STORMWATER PIPE CONNECTION TO U.G. STREAM DETAIL  
NOT TO SCALE



STORMWATER PIPE CONNECTION TO U.G. STREAM DETAIL  
NOT TO SCALE



STORMWATER PIPE CONNECTION TO U.G. STREAM DETAIL  
NOT TO SCALE

STORMWATER PIPE CONNECTION TO U.G. STREAM DETAIL  
NOT TO SCALE

RECOMMENDED FOR APPROVAL:

MAYOR OF THE CITY OF BEACON \_\_\_\_\_ DATE \_\_\_\_\_

APPROVED BY RESOLUTION OF THE CITY COUNCIL OF THE CITY OF BEACON

ON THE \_\_\_\_\_ DAY OF \_\_\_\_\_ 20\_\_\_\_

APPROVED BY RESOLUTION OF THE PLANNING BOARD OF THE CITY OF BEACON, NEW YORK, ON THE \_\_\_\_\_ DAY OF \_\_\_\_\_ 20\_\_\_\_

CONDITIONS OF SAID RESOLUTION, ANY CHANGE, ERASURE, MODIFICATION OR REVISION OF THIS PLAN, AS APPROVED, SHALL VOID THIS APPROVAL.

SIGNED THIS \_\_\_\_\_ DAY OF \_\_\_\_\_ 20\_\_\_\_ BY \_\_\_\_\_

\_\_\_\_\_  
CHAIRMAN

\_\_\_\_\_  
SECRETARY

IN ABSENCE OF THE CHAIRMAN OR SECRETARY, THE ACTING CHAIRMAN OR ACTING SECRETARY RESPECTIVELY MAY SIGN IN THIS PLACE.



SEAL  
JON D. BOBENDORF, P.E.  
NYS LICENSE NO. 076245  
DANIEL G. KOHLER, P.E.  
NYS LICENSE NO. 086716

REVISIONS:			
NO.	DATE	DESCRIPTION	BY
1	8/29/17	PER PLANNING BOARD COMMENTS	CMB
2	9/28/17	NO CHANGE	CMB

## Amendment to Special Use Permit Stormwater Details

Sheet 9 of 10