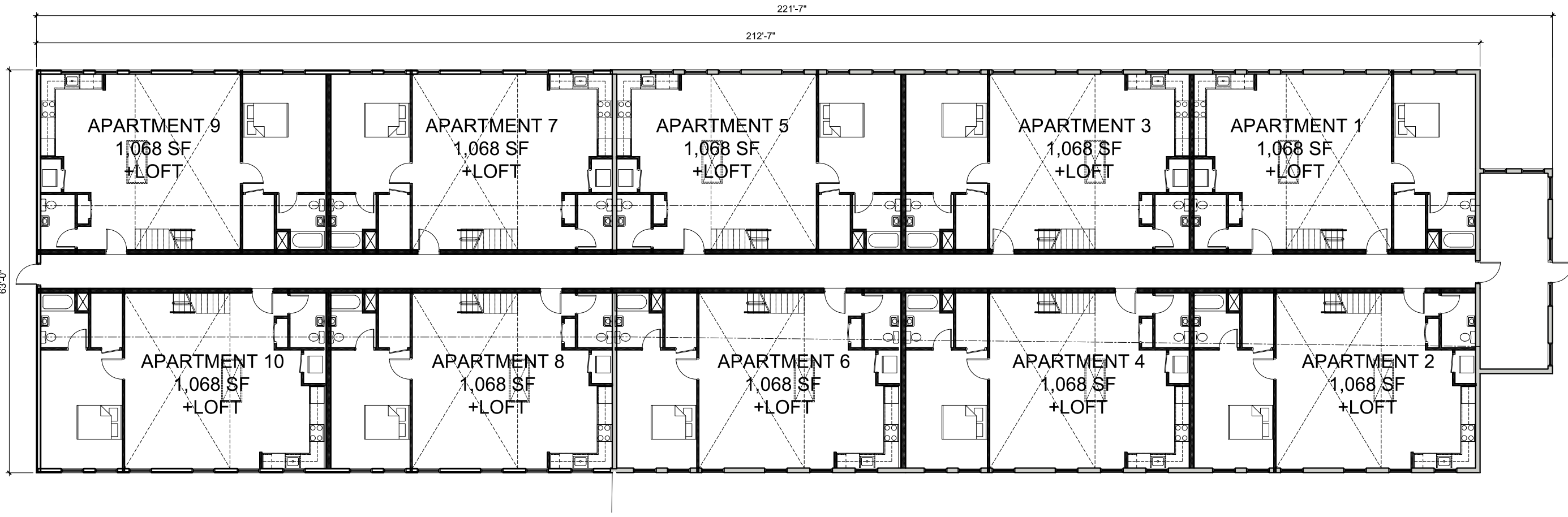


**Loft Level Plan**

Scale: 1/16" = 1'-0"



**First Floor Plan**

Scale: 1/16" = 1'-0"

APPROVED BY RESOLUTION OF THE PLANNING BOARD OF THE CITY OF BEACON, NEW YORK, ON THE \_\_\_\_\_ DAY OF \_\_\_\_\_, 20\_\_\_\_, SUBJECT TO ALL REQUIREMENTS AND CONDITIONS OF SAID RESOLUTION. ANY CHANGE, ERASURE, MODIFICATION OR REVISION OF THIS PLAT, AS APPROVED, SHALL VOID THIS APPROVAL.

SIGNED THIS \_\_\_\_\_ DAY OF \_\_\_\_\_, 20\_\_\_\_, BY \_\_\_\_\_

CHAIRMAN

SECRETARY

IN ABSENCE OF THE CHAIRMAN OR SECRETARY, THE ACTING CHAIRMAN OR ACTING SECRETARY RESPECTIVELY MAY SIGN IN THIS PLACE.

REVISIONS:			
NO.	DATE	DESCRIPTION	BY
1	8/29/17	REVISED PER PLANNING BOARD COMMENTS	AJS

**Site Plan Application**  
Sheet 4 of 8 - Floor Plans & Exterior Views

Owner:  
**My Four Daughter's Realty Corp.**  
5-44 74th Ave.  
Long Island City, New York 11101

Architect:  
**Aryeh Siegel, Architect**  
84 Mason Circle  
Beacon, New York 12508

Civil Engineer:  
**Hudson Land Design**  
174 Main Street  
Beacon, New York 12508

Surveyor:  
**TEC Surveying**  
15C Tioronda Avenue  
Beacon, New York 12508

**123 Rombout Avenue**  
Beacon, New York  
Scale: As Noted  
July 25, 2017