

PLANT SCHEDULE						
KEY	BOTANICAL NAME	QTY.	SIZE	ROOT	SPACING	COMMENTS
TREES						
CC	CERCIS CANADENSIS	3	3" - 3.5"	B&B	SEE DRAWING	MULTISTEM FORM
JV	JUNIPERUS VIRGINIANA	1	6'-7"	B&B	SEE DRAWING	
MV	MAGNOLIA VIRGINIANA	2	3'-4"	B&B	SEE DRAWING	
SR	SYRINGA RETICULATA	3	3"-3.5"	B&B	SEE DRAWING	
SHRUBS						
HA	HYDRANGEA 'ANNABELLE'	20	3 GAL.	CONT.		
HAP	HYDRANGEA ANOM. PETIOLARIS	2	5 GAL.	CONT.		
IV	ITEA VIRGINIANA 'LITTLE HENRY'	30	3 GAL.	CONT.		
PQ	PARTHENOCISUS QUINQUEFOLIA	5	3 GAL.	CONT.		
PL	PRUNUS LAUROCERASUS 'OTTO LUYKEN'	26	5 GAL.	CONT.		
VR	VIBURNUM RHYTIDOPHYLLOIDES 'ALLEGHANY'	65	5 GAL.	CONT.		
HERBACIOUS						
AS	ALLIUM SPHAENOCEPHALON	110	BULB			
CF	CAREX FLACA 'BLUE ZINGER'	270	PLUG	TRAY		
DC	DESCHAMPSIA CESPITOSA 'GOLDTAU'	688	PLUG	TRAY		
SN	SALVIA NEMEROSA 'CARADONNA'	265	PLUG	TRAY		
LAWN						
SEEDED WITH 5311 CONSERVATION MIX (OR APPROVED EQUAL), APPLIED AT 3-5LBS PER 1000SF. 30% CREEPING RED FESCUE; 30% ANNUAL RYEGRASS; 25% KENTUCKY BLUEGRASS 'CORSAIR'; 25% KENTUCKY BLUEGRASS 'SHAMROCK'; 10% ANNUAL RYEGRASS; 10% PERENNIAL RYEGRASS. SOURCE: ERNST CONSERVATION SEEDS						
NO-MOW LAWN						
SEEDED WITH NO-MOW LAWN SEED MIX (OR APPROVED EQUAL), APPLIED AT 5LBS PER 1000SF SOURCE: PRAIRIE NURSERY						
BIORETENTION/BIOINFILTRATION AREA, AS NEEDED						
SEEDED WITH NATIVE DETENTION AREA MIX (OR APPROVED EQUAL), APPLIED AT .5 LBS PER 1,000 SF. 47% DEERTONGUE, 'TIOGA'; 22% VIRGINIA WILDRYE; 20% FOX SEDGE; 5% AUTUMN BENTGRASS; 3% SOFT RUSH; 2% TICKLEGRASS; 1% PATH RUSH. SOURCE: ERNST CONSERVATION SEEDS						

DO NOT HEAVILY PRUNE THE TREE AT PLANTING. PRUNE ONLY CROSSOVER LIMBS, CO-DOMINANT LEADERS, AND BROKEN OR DEAD BRANCHES. SOME INTERIOR TWIGS AND LATERAL BRANCHES MAY BE PRUNED; HOWEVER, DO NOT REMOVE THE TERMINAL BUDS OF BRANCHES THAT EXTEND TO THE EDGE OF THE CROWN.

STAKE TREES ONLY UPON THE APPROVAL OF THE LANDSCAPE DESIGNER.

WRAP TREE TRUNKS ONLY UPON THE APPROVAL OF THE LANDSCAPE DESIGNER.

MARK THE NORTH SIDE OF THE TREE IN THE NURSERY, AND ROTATE TREE TO FACE NORTH AT THE SITE.

TREE SHALL BEAR SAME RELATION TO GRADE AS IT BORE TO IT'S PREVIOUSLY EXISTING GRADE. PLANT TREE 2-3" IN. ABOVE DESIRED GRADE TO ALLOW FOR SOME SETTLING.

2 IN. MULCH. DO NOT PLACE MULCH IN CONTACT WITH TREE TRUNK. MAINTAIN THE MULCH WEED-FREE FOR A MINIMUM OF THREE YEARS AFTER PLANTING.

1:1 SLOPE ON SIDES OF PLANTING HOLE

TAMP SOIL AROUND ROOT BALL BASE FIRMLY WITH FOOT PRESSURE SO THAT ROOT BALL DOES NOT SHIFT.

EACH TREE MUST BE PLANTED SUCH THAT THE TRUNK FLARE IS VISIBLE AT THE TOP OF THE ROOT BALL. TREES WHERE THE TRUNK FLARE IS NOT VISIBLE SHALL BE REJECTED. DO NOT COVER THE TOP OF THE ROOT BALL WITH SOIL.

FORM A SOIL SAUCER 4 IN. IN DEPTH AND FILL WITH WATER. SOON AFTER WATER HAS BEEN ABSORBED, COVER WITH MULCH.

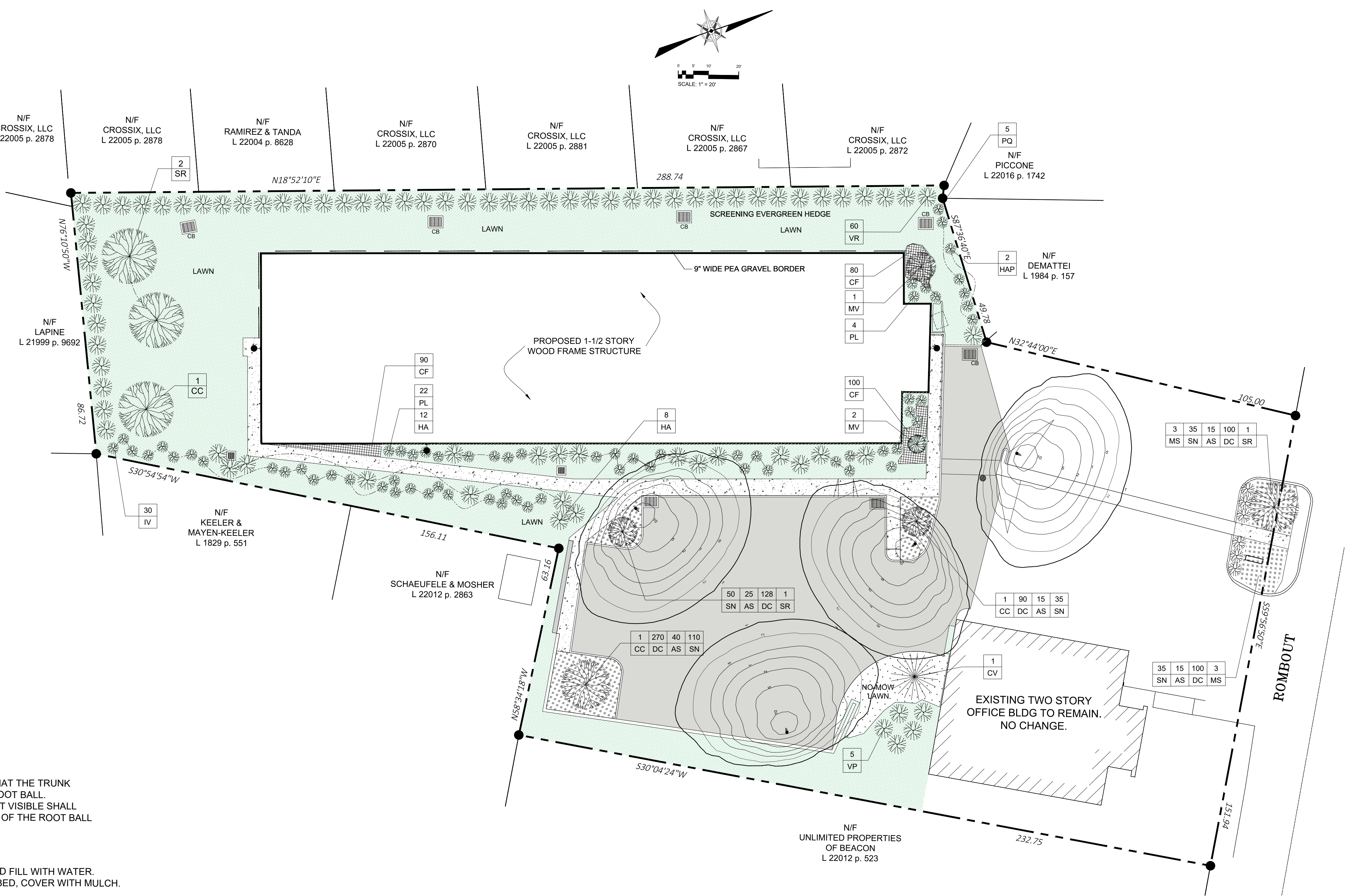
BACK FILL WITH EXISTING SOIL. IN SANDY LOAM SOILS, ADD 20% MAX. BY VOLUME COMPOSTED ORGANIC MATERIAL TO THE EXISTING SOIL.

REMOVE ALL TWINE, ROPE AND WIRE, AND BURLAP FROM TOP HALF OF ROOT BALL. IF PLANT IS SHIPPED WITH A WIRE BASKET AROUND THE ROOT BALL, CUT THE WIRE BASKET IN FOUR PLACES AND FOLD DOWN 8 IN. INTO PLANTING HOLE.

PLACE ROOTBALL ON UNEXCAVATED OR COMPACTED MOUND TO PREVENT SETTLEMENT.

TREE PLANTING DETAIL

NOTE: THIS DETAIL ASSUMES THAT THE PLANTING SPACE IS LARGER THAN 8 FT. SQUARE, OPEN TO THE SKY, AND NOT COVERED BY ANY PAVING OR GRATING.



Site Lighting & Landscaping Plan

Scale: 1" = 20'-0"

APPROVED BY RESOLUTION OF THE PLANNING BOARD OF THE CITY OF BEACON, NEW YORK, ON THE	
DAY OF _____, 20____, SUBJECT TO ALL REQUIREMENTS AND CONDITIONS OF SAID RESOLUTION. ANY CHANGE, ERASURE, MODIFICATION OR REVISION OF THIS PLAT, AS APPROVED, SHALL VOID THIS APPROVAL.	
SIGNED THIS _____ DAY OF _____, 20____, BY	
_____ CHAIRMAN	
_____ SECRETARY	
IN ABSENCE OF THE CHAIRMAN OR SECRETARY, THE ACTING CHAIRMAN OR ACTING SECRETARY RESPECTIVELY MAY SIGN IN THIS PLACE.	

REVISIONS:			
NO.	DATE	DESCRIPTION	BY
1	8/29/17	REVISED PER PLANNING BOARD COMMENTS	AJS

Site Plan Application

Sheet 3 of 8 - Site Lighting & Landscaping Plan

Owner:
My Four Daughter's Realty Corp.
5-44 74th Ave.
Long Island City, New York 11101

Architect:
Aryeh Siegel, Architect
84 Mason Circle
Beacon, New York 12508

Civil Engineer:
Hudson Land Design
174 Main Street
Beacon, New York 12508

Surveyor:
TEC Surveying
15C Tioronda Avenue
Beacon, New York 12508

123 Rombout Avenue
Beacon, New York
Scale: 1" = 20'
July 25, 2017