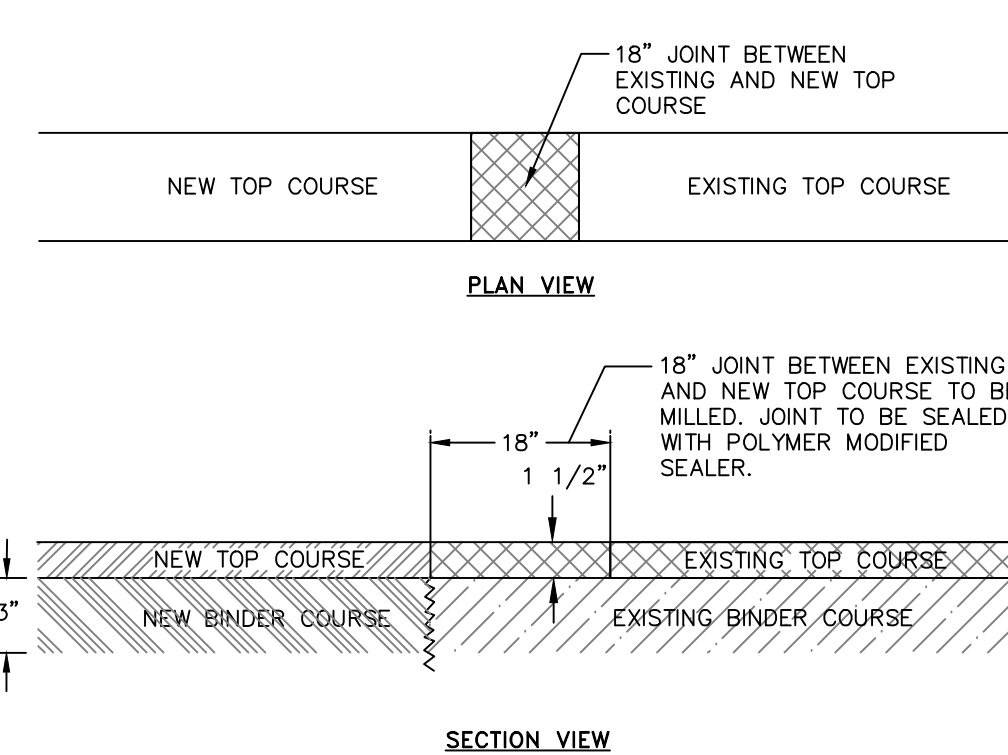


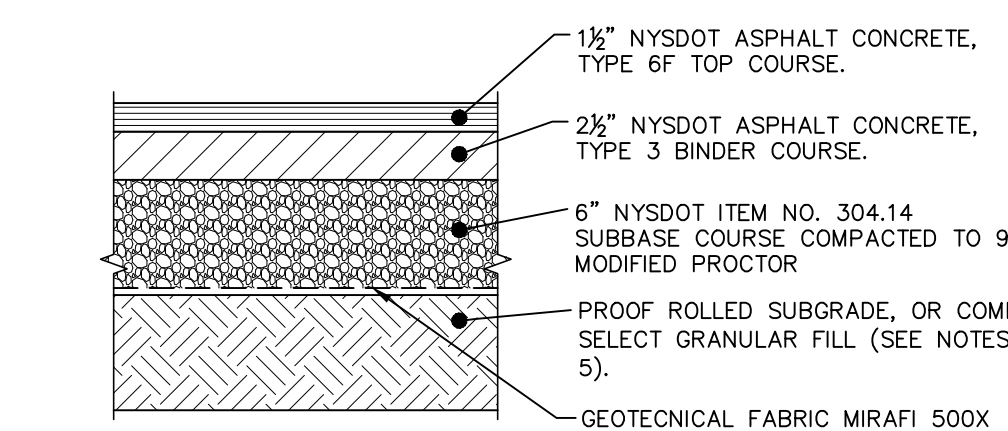
SITE DETAILS



NOTES:

- 3" BINDER COURSE AND 1 1/2" TOP COURSE TO BE USED FOR RESTORATION OF PAVEMENT WITHIN CITY ROADS.
- EXCAVATIONS ARE TO BE SAW CUT SMOOTH, ALL EDGES TACK COATED, AND ALL SEAMS SEALED WITH A HOT POLYMER MODIFIED CRACK SEALANT.
- IF EXISTING ASPHALT PAVEMENT DEPTH IS GREATER THAN THE PROPOSED ASPHALT PAVEMENT SECTION, INCREASE PROPOSED ASPHALT BINDER THICKNESS TO MATCH EXISTING.

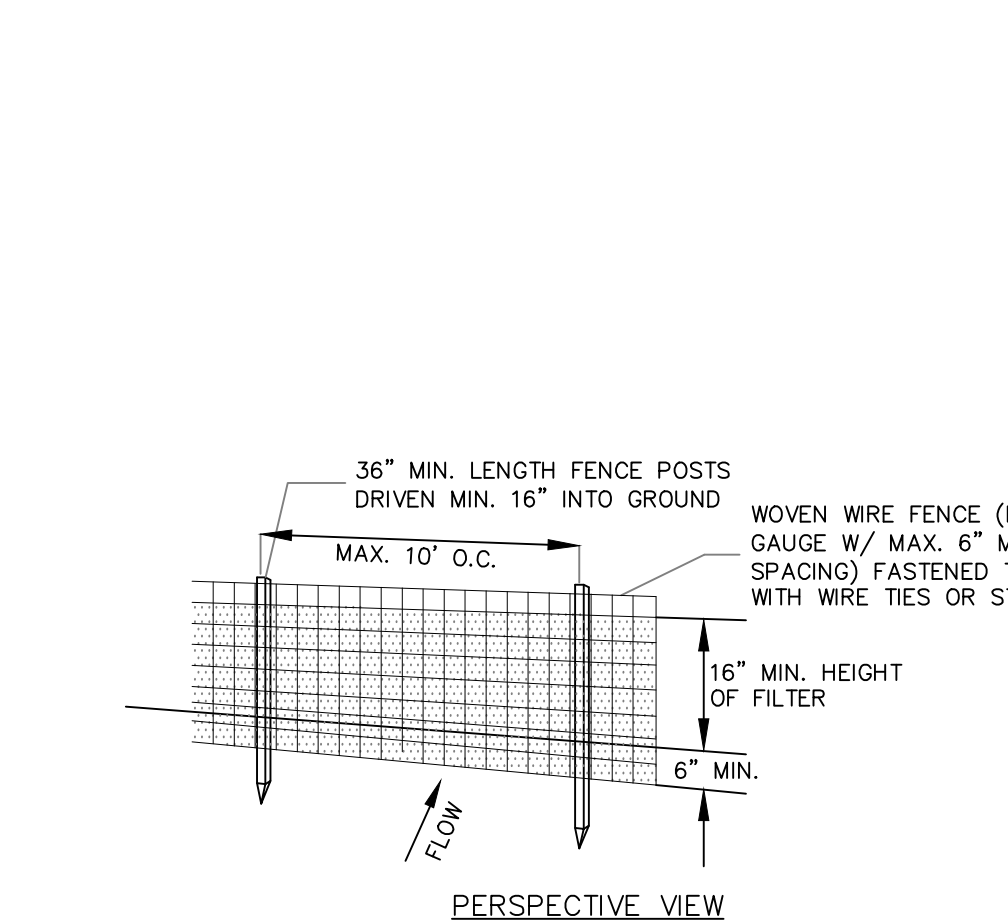
MILLED KEYWAY DETAIL
NOT TO SCALE



1. MATERIALS AND METHODS OF CONSTRUCTION SHALL BE IN CONFORMANCE WITH THE NEW YORK STATE DEPARTMENT OF TRANSPORTATION (NYSDOT) STANDARD SPECIFICATIONS FOR CONSTRUCTION AND MATERIALS, DATED JANUARY 2, 2002.
2. SUBGRADE SHALL NOT INCLUDE FROZEN MATERIALS, DEBRIS, ORGANIC MATERIALS, LARGE STONES OR OTHER UNSUITABLE MATERIALS.
3. TACK COAT WHEN SPECIFIED OR CALLED OUT IN THESE DRAWINGS OR REQUIRED BY THE REFERENCED SPECIFICATIONS SHALL CONFORM WITH SECTION 407-TACK COAT OF THE ABOVE REFERENCED NYSDOT STANDARD SPECIFICATIONS.
4. WHERE IT IS NECESSARY TO PLACE FILL FOR PURPOSES OF BRINGING THE SUBGRADE ELEVATION UP TO A SPECIFIED GRADE, THE FILL MATERIAL PLACED SHALL BE IN CONFORMANCE WITH SECTION 203-EXCAVATION AND EMBANKMENT OF THE ABOVE REFERENCED NYSDOT STANDARD SPECIFICATIONS.
5. IT IS EXPECTED THAT THE EXISTING SITE SUB-SOILS ARE SAND AND GRAVEL IN NATURE. CALIFORNIA BEARING RATIO RANGE BETWEEN 40 AND 80 - IF UNSUITABLE SOILS ARE ENCOUNTERED DURING CONSTRUCTION, THE CONTRACTOR SHALL CONTACT THE ENGINEER FOR POSSIBLE MODIFICATIONS TO THE PAVEMENT DETAIL.

PAVEMENT SECTION DETAIL
NOT TO SCALE

EROSION AND SEDIMENT CONTROL DETAILS



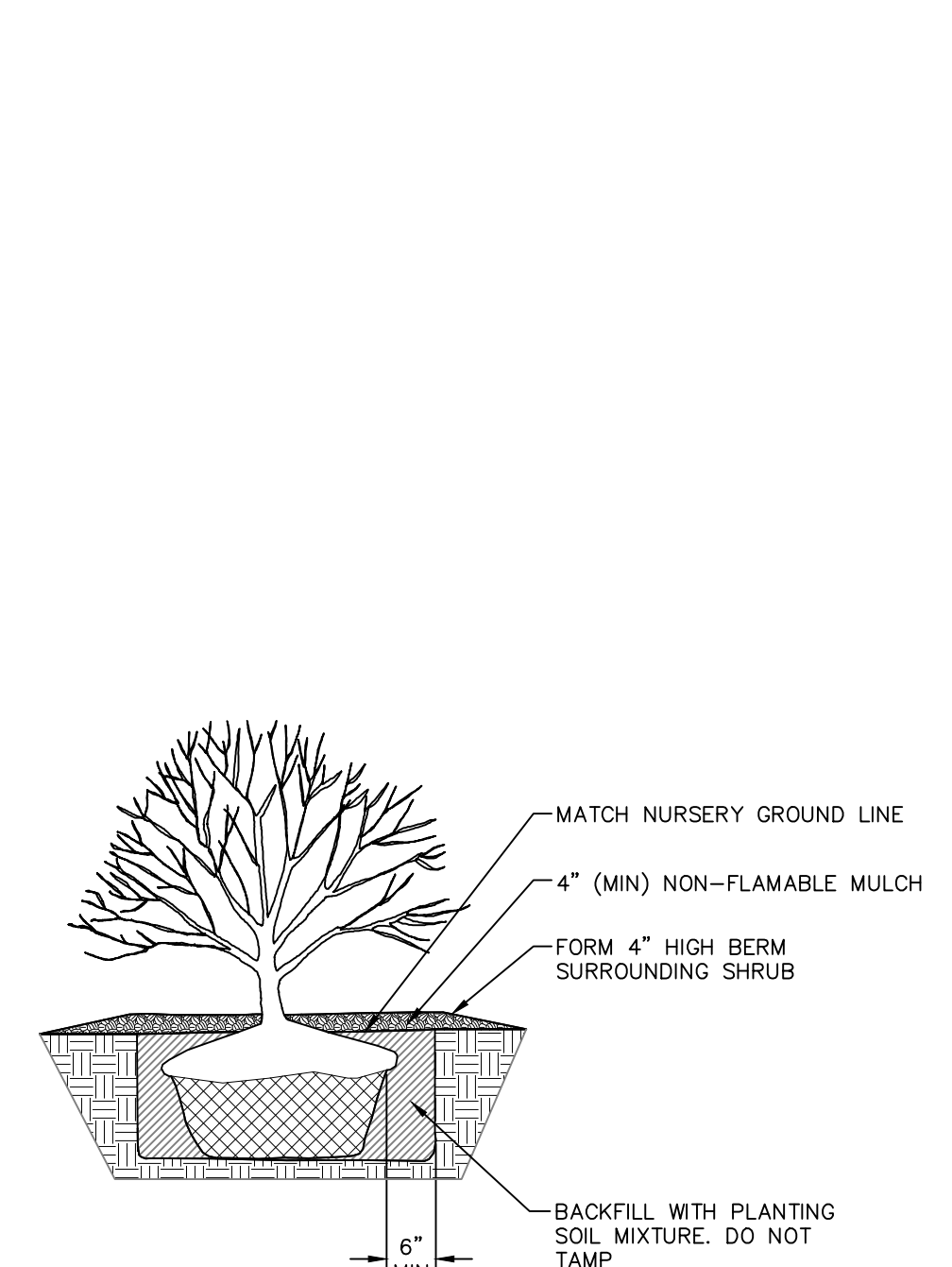
NOTES:

1. FILTER CLOTH TO BE FASTENED SECURELY TO WOVEN WIRE FENCE WITH TIES SPACED EVERY 24" AT TOP AND MID SECTION.
2. WHEN TWO SECTIONS OF FILTER CLOTH ADJOIN EACH OTHER THEY SHALL BE OVER-LAPPED BY SIX INCHES AND FOLDED. FILTER CLOTH SHALL BE EITHER FILTER X, MIRAFI 100X, STABILINKA T140N OR APPROVED EQUAL.
3. PREFABRICATED UNITS SHALL BE GEOTAF, ENVIROFORCE OR APPROVED EQUAL.
4. MAINTENANCE SHALL BE PERFORMED AS NEEDED AND MATERIAL REMOVED WHEN "BULGES" DEVELOP IN THE SILT FENCE.

SILT FENCE DETAIL
NOT TO SCALE

STABILIZED CONSTRUCTION ENTRANCE DETAIL
NOT TO SCALE

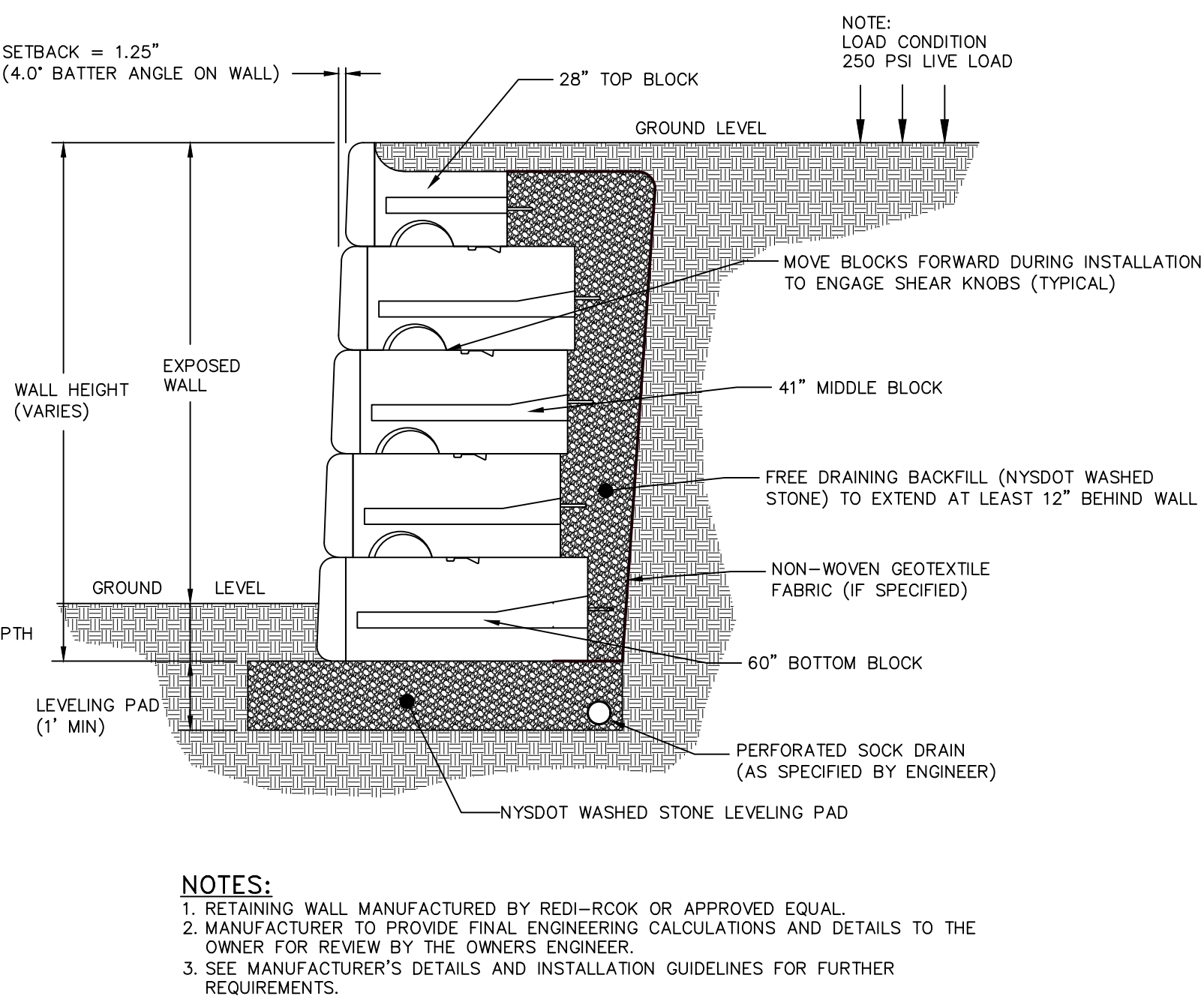
LANDSCAPING DETAILS



- NOTE
1. WATER PER NURSERY SPECIFICATIONS IMMEDIATELY FOLLOWING PLANTING.
 2. DETAIL IS FOR BOTH BALL & BURLAPPED OR CONTAINERED SHRUBS.

SHRUB PLANTING DETAIL
NOT TO SCALE

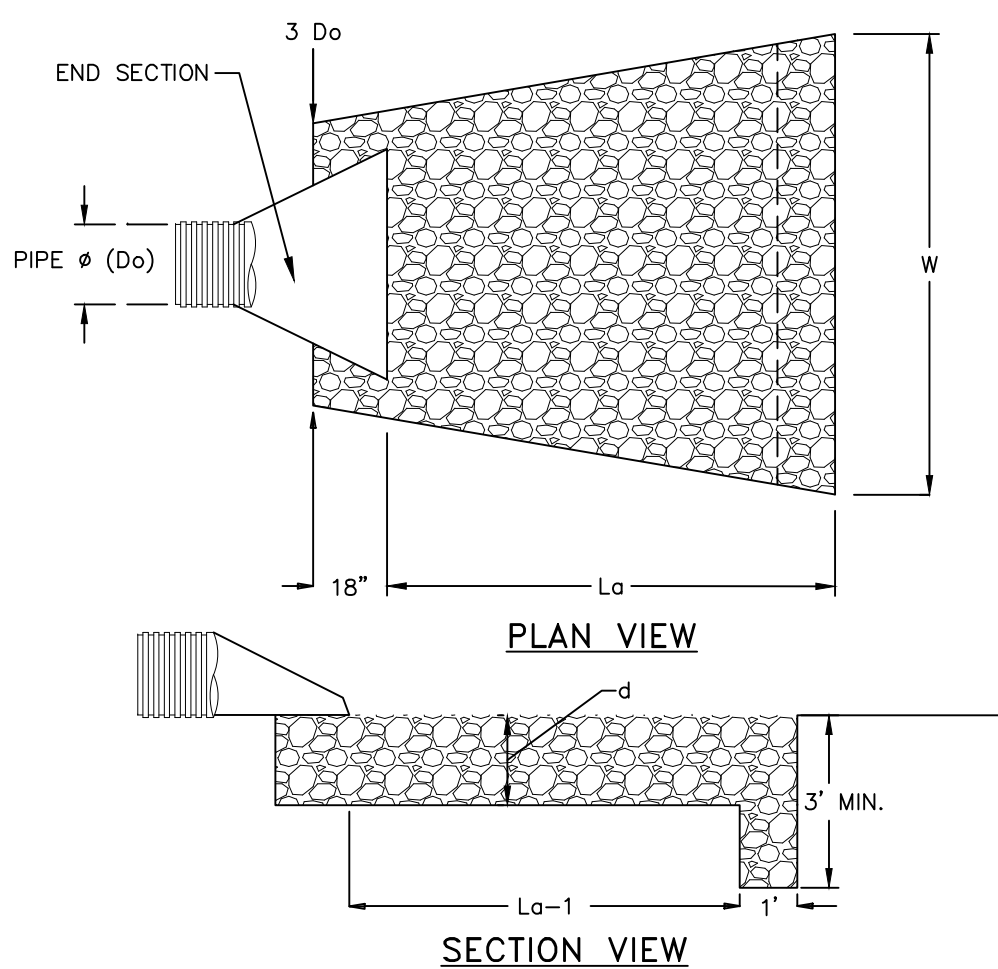
TYPICAL REDI-ROCK GRAVITY WALL WITH 41" BLOCKS
NOT TO SCALE



NOTES:

1. RETAINING WALL MANUFACTURED BY REDI-ROCK OR APPROVED EQUAL.
2. MANUFACTURER TO PROVIDE FINAL ENGINEERING CALCULATIONS AND DETAILS TO THE OWNER FOR REVIEW BY THE OWNER'S ENGINEER.
3. SEE MANUFACTURER'S DETAILS AND INSTALLATION GUIDELINES FOR FURTHER REQUIREMENTS.

ROCK OUTLET PROTECTION DETAIL
NOT TO SCALE



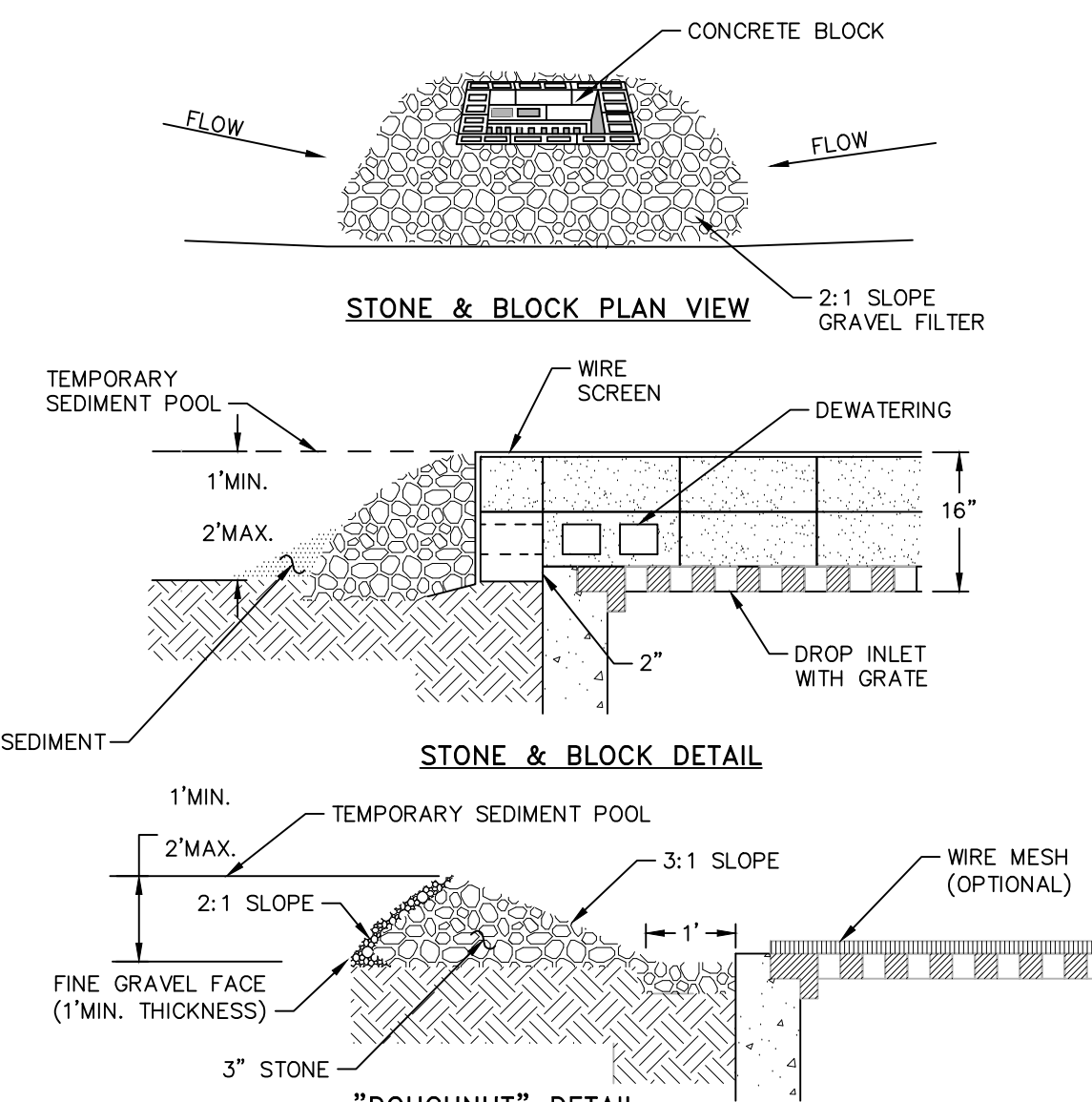
NOTES:

1. SIZING INFORMATION TAKEN FROM FIGURE 5B.12 (PAGE 5B.25) AND/OR FIGURE 5B.13 (PAGE 5B.26) OF THE "NEW YORK STANDARDS AND SPECIFICATIONS FOR EROSION AND SEDIMENT CONTROL", 2016 EDITION.
2. RIPRAP SHALL BE COMPOSED OF A WELL-GRADED MIXTURE OF STONE SIZE SO THAT 50% OF THE PIECES SHALL BE LARGER, BY WEIGHT, THAN THE SPECIFIED #50. THE LARGEST STONE SIZE SHALL BE 1.5 TIMES #50.
3. THE MINIMUM THICKNESS OF THE RIPRAP LAYER SHALL BE 1.5 TIMES THE MAXIMUM STONE DIAMETER FOR #50 OF 15 INCHES OR LESS, AND 1.2 TIMES THE MAXIMUM STONE SIZE FOR #50 GREATER THAN 15 INCHES.
4. A LAYER OF FILTER FABRIC (THICKNESS 20-60 MILS, GRAB STRENGTH 90-120 LBS. SHALL CONFORM TO ASTM D-1777 AND ASTM D-1682) SHALL BE PLACED BETWEEN THE RIPRAP AND THE UNDERLYING SOIL SURFACE. FILTER FABRIC SHALL HAVE A MINIMUM 1" OVERLAP AT ALL SEAMS.

ROCK OUTLET PROTECTION TABLE
NOT TO SCALE

OUTLET PIPE ID	PIPE #	30% W	Lo	d	#50 RIPRAP SIZE
FES A	15 INCHES	3.75 FEET	10.5 FEET	23 FEET	9 INCHES 4 INCHES
FES B	24 INCHES	6 FEET	18 FEET	9 FEET	9 INCHES 4 INCHES
FES C	15 INCHES	3.75 FEET	5 FEET	8 FEET	9 INCHES 4 INCHES
FES D	15 INCHES	3.75 FEET	10.5 FEET	8 FEET	9 INCHES 4 INCHES
FES E	24 INCHES	6 FEET	15 FEET	13 FEET	14 INCHES 6 INCHES

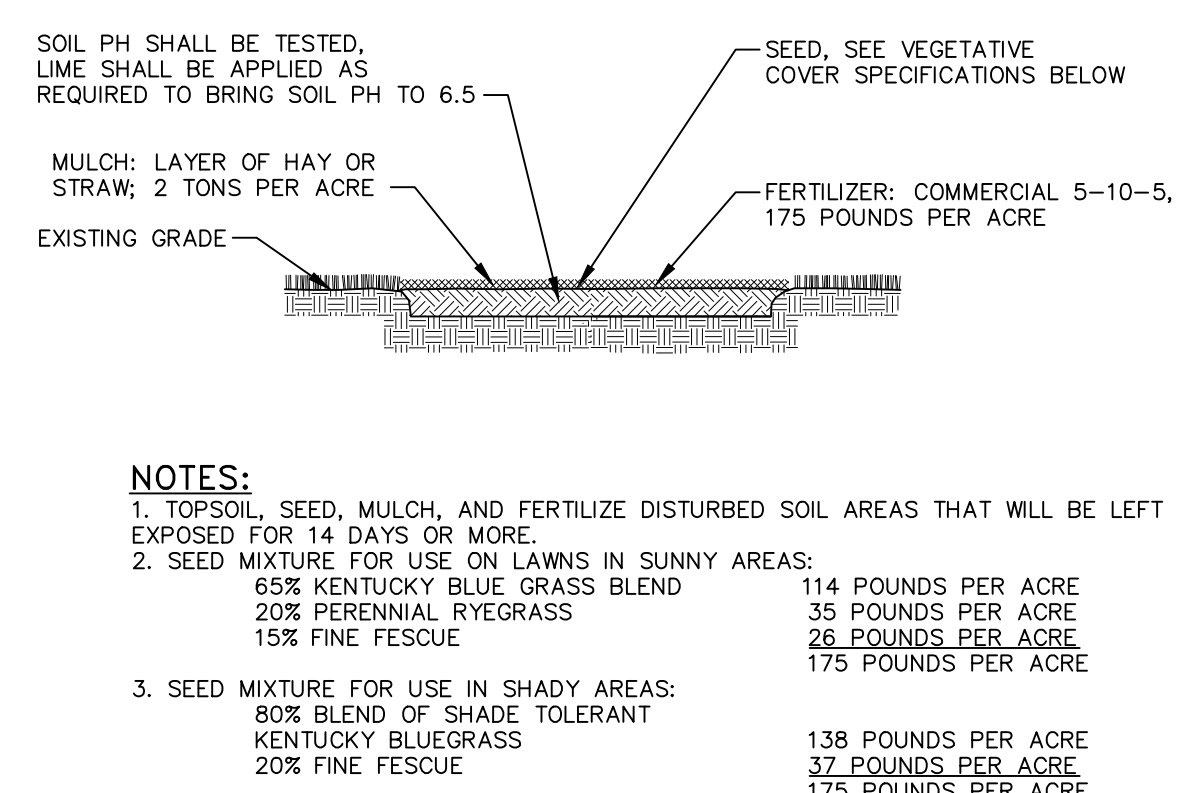
CATCH BASIN INLET PROTECTION DETAIL
NOT TO SCALE



NOTES:

1. LAY ONE BLOCK ON EACH SIDE OF THE STRUCTURE ON ITS SIDE FOR DOWELING. FOUNDATION SHALL BE 2 INCHES MINIMUM BELOW REST OF INLET AND BLOCKS SHALL BE PLACED AGAINST INLET FOR SUPPORT.
2. HARDWARE CLOTH OR 1/2" WIRE MESH SHALL BE PLACED OVER BLOCK OPENINGS TO SUPPORT STONE.
3. USE CLEAN STONE OR GRAVEL 1/2-3/4 INCH IN DIAMETER PLACED 2 INCHES BELOW TOP OF THE BLOCK ON A 2:1 SLOPE OR FLATTER.
4. FOR STONE STRUCTURES ONLY, A 1 FOOT THICK LAYER OF THE FILTER STONE WILL BE PLACED AGAINST THE 3 INCH STONE AS SHOWN ON THE DRAWING. MAXIMUM DRAINAGE AREA 1 ACRE.

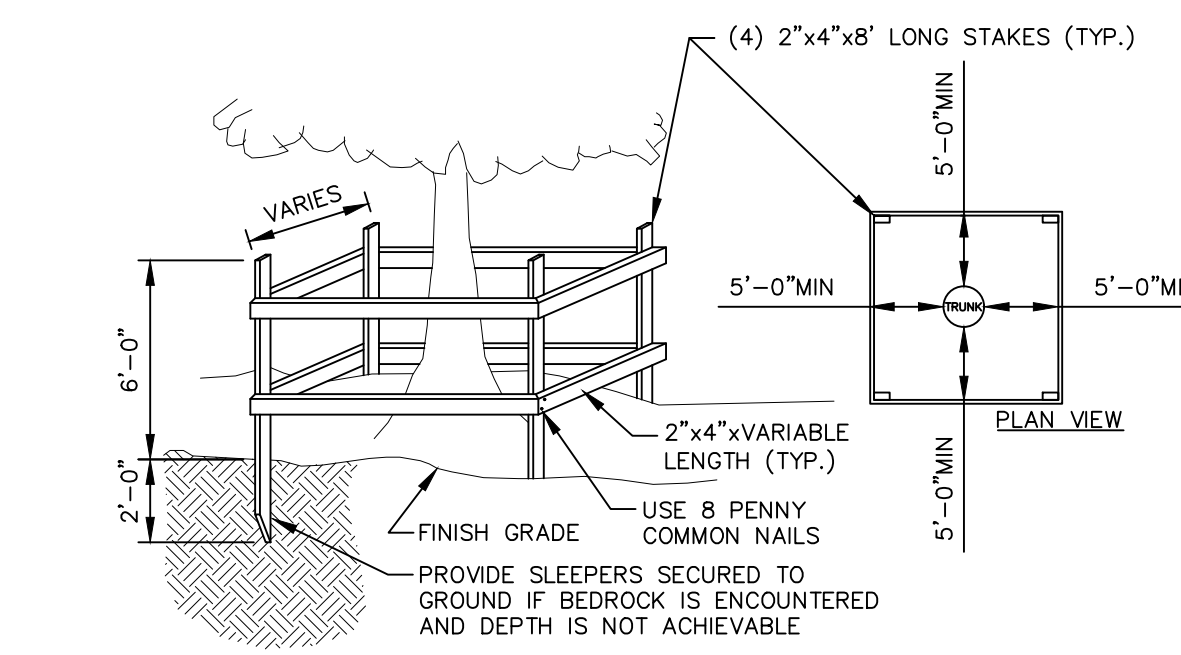
TOPSOIL, SEED AND MULCH DETAIL
NOT TO SCALE



NOTES:

1. TOPSOIL, SEED, MULCH, AND FERTILIZE DISTURBED SOIL AREAS THAT WILL BE LEFT EXPOSED FOR 14 DAYS OR MORE.
2. SEED MIXTURE FOR USE ON LAWNS IN SUNNY AREAS:
60% KENTUCKY BLUE GRASS BLEND
20% PERENNIAL RYEGRASS
10% FINE FESCUE
3. SEED MIXTURE FOR USE IN SHADY AREAS:
80% BLEND OF SHADE TOLERANT KENTUCKY BLUEGRASS
20% FINE FESCUE
4. SEED BETWEEN APRIL 1ST AND MAY 15TH OR AUGUST 15TH AND OCTOBER 15TH. SEEDING MAY OCCUR BETWEEN MAY 15TH AND AUGUST 15TH IF ADEQUATE IRRIGATION IS PROVIDED.
5. TOPSOIL SHALL HAVE AT LEAST 6% BY WEIGHT OF FINE TEXTURED STABLE ORGANIC MATERIAL, AND NO GREATER THAN 20% TOPSOIL SHALL HAVE NOT LESS THAN 20% FINE TEXTURED MATERIAL (PASSING THE NO. 200 SIEVE) AND NOT MORE THAN 10% CLAY.

TEMPORARY TREE PROTECTION DETAIL
NOT TO SCALE



NOTES:

1. TREES TO REMAIN NOTED ON EXISTING CONDITIONS PLAN.
2. NOT ALL TREES TO REMAIN REQUIRE PROTECTION. TREE PROTECTION TO BE UTILIZED ON TREES WHERE CONSTRUCTION TRAFFIC WOULD COMPACT THE ROOT ZONE OF THE TREE.

RECOMMENDED FOR APPROVAL:

MAYOR OF THE CITY OF BEACON _____ DATE _____

APPROVED BY RESOLUTION OF THE CITY COUNCIL OF THE CITY OF BEACON

ON THE _____ DAY OF _____, 20____

APPROVED BY RESOLUTION OF THE PLANNING BOARD OF THE CITY OF BEACON, NEW YORK, ON THE _____ DAY OF _____, 20____ SUBJECT TO ALL REQUIREMENTS AND CONDITIONS OF SAID RESOLUTION, ANY CHANGE, ERRASURE, MODIFICATION OR REVISION OF THIS PLAN, AS APPROVED, SHALL VOID THIS APPROVAL.

SIGNED THIS _____ DAY OF _____, 20____ BY _____

_____ CHAIRMAN

_____ SECRETARY

IN ABSENCE OF THE CHAIRMAN OR SECRETARY, THE ACTING CHAIRMAN OR ACTING SECRETARY RESPECTIVELY MAY SIGN IN THIS PLACE.



SEAL

JON D. BODENDORF, P.E.
NYS LICENSE NO. 076245
DANIEL G. KOEHLER, P.E.
NYS LICENSE NO. 082716

REVISIONS:		
NO.	DATE	DESCRIPTION
1	2/28/17	PER PLANNING BOARD COMMENTS
2	3/28/17	PER PLANNING BOARD COMMENTS
3	4/25/17	NO CHANGE THIS SHEET
4	5/30/17	PER PLANNING BOARD COMMENTS
5	7/25/17	NO CHANGE THIS SHEET
6	8/28/17	NO CHANGE THIS SHEET

Special Use Permit Application
Site, Landscaping and Erosion & Sediment Control Details

Sheet 13 of 15

Owner:
Scenic Beacon Development, LLC
29 E. Main Street
Beacon, NY 12508

Architect:
Aryeh Siegel, Architect
514 Main Street
Beacon, NY 12508

Site/Civil Engineer:
Hudson Land Design
174 Main Street
Beacon, New York 12508

Surveyor:
TEC Land Surveying
Main Street
Beacon, New York 12508

Edgewater
Beacon, New York
Scale: As Noted
December 22, 2016