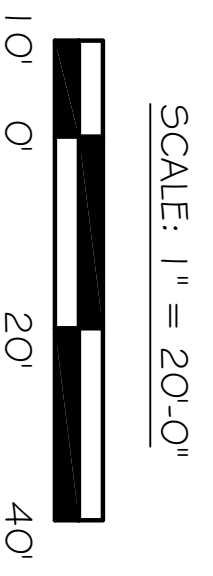
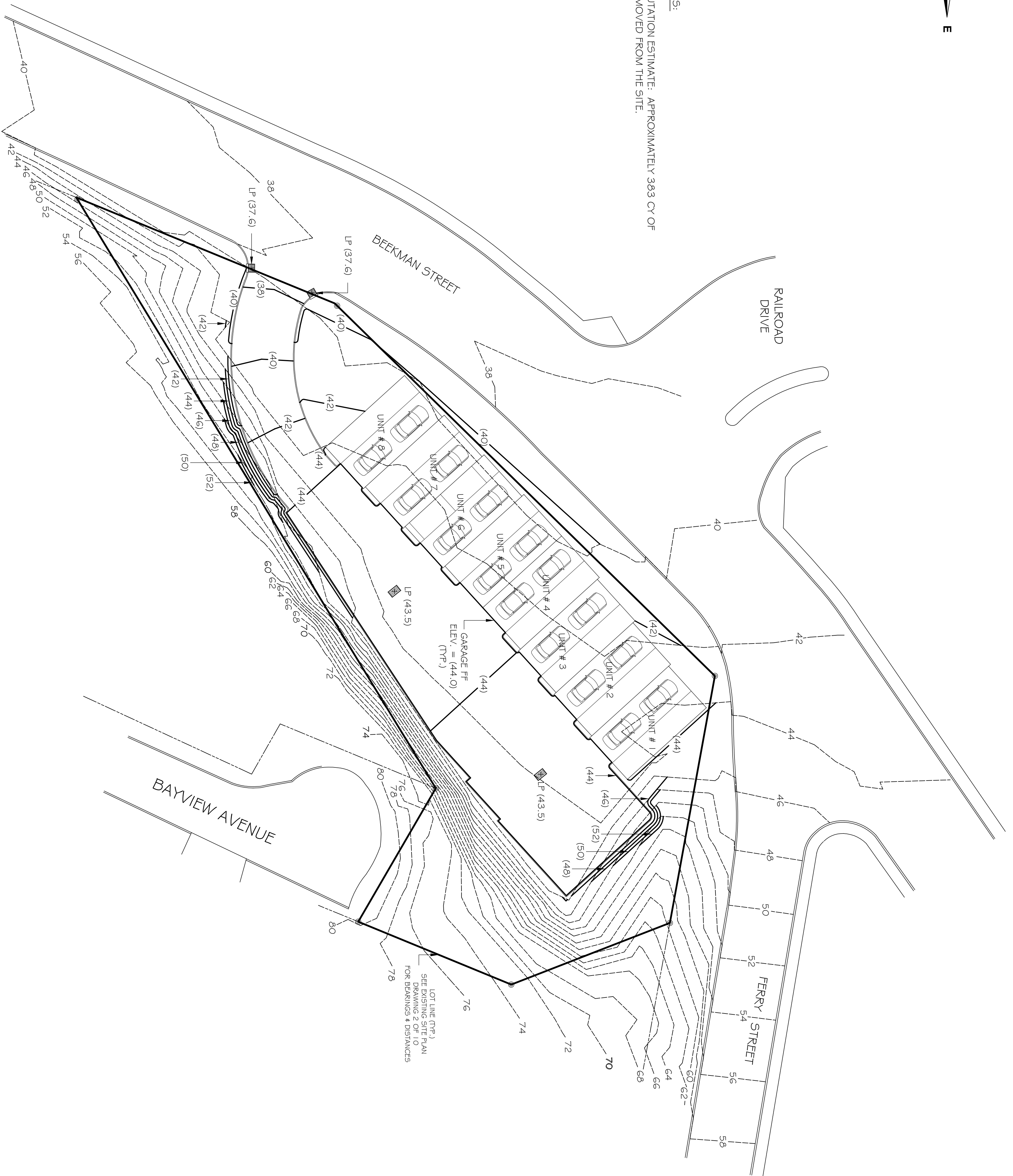


SITE GRADING NOTES:
 EARTHWORK COMPUTATION ESTIMATE: APPROXIMATELY 383 CY OF
 MATERIAL TO BE REMOVED FROM THE SITE.



REVISION & DATE

FERRY LANDING AT BEACON, LTD
 DEVELOPERS · DESIGNERS · BUILDERS
 POST OFFICE BOX 294
 BEACON, NY 12508

SITE GRADING PLAN
 FOR
FERRY LANDING AT BEACON
 BEEKMAN AND FERRY STREET
 BEACON, NY 12508

DATED: MARCH 1, 2017
 SCALE: 1" = 20'-0"
 DRAWING:
4 OF 9