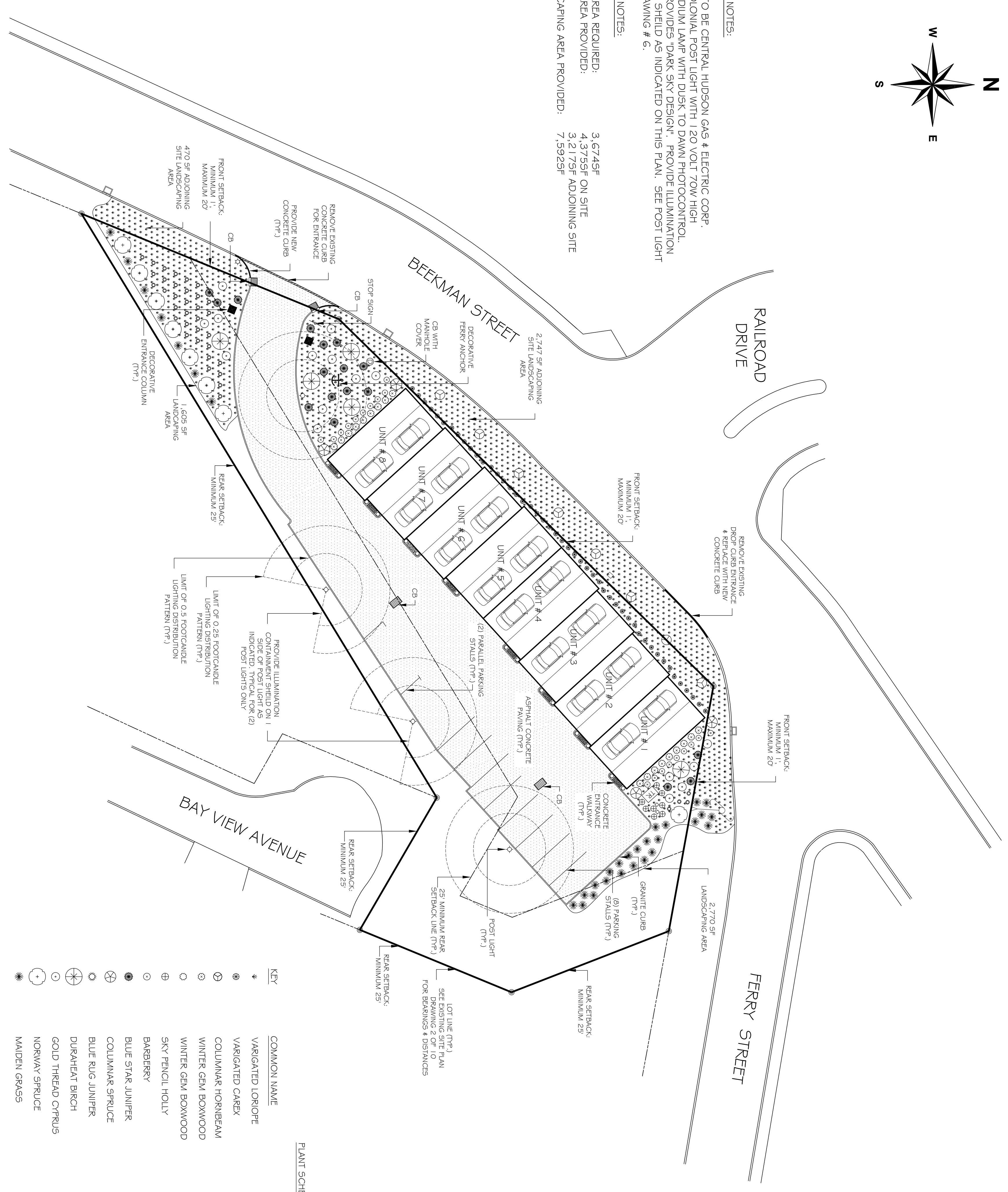


**SITE LIGHTING NOTES:**

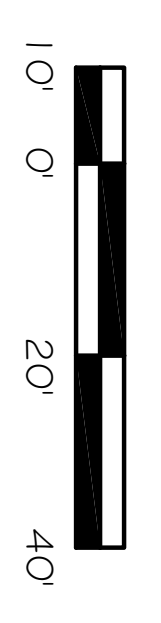
POST LIGHTS TO BE CENTRAL HUDSON GAS & ELECTRIC CORP. STANDARD COLONIAL POST LIGHT WITH 120 VOLT 70W HIGH PRESSURE SODIUM LAMP WITH DUSK TO DAWN PHOTOCONTROL. POST LIGHT PROVIDES 'DARK SKY DESIGN'. PROVIDE ILLUMINATION CONTAINMENT SHIELD AS INDICATED ON THIS PLAN. SEE POST LIGHT DETAIL ON DRAWING # 6.

**LANDSCAPING NOTES:**

LANDSCAPING AREA REQUIRED: 3,674SF  
 LANDSCAPING AREA PROVIDED: 4,375SF ON SITE  
 3,217SF ADJOINING SITE  
 TOTAL LANDSCAPING AREA PROVIDED: 7,592SF



SCALE: 1" = 20'-0"



**PLANT SCHEDULE**

KEY	COMMON NAME	SIZE
◆	VARIATED LORIOPE	1 GAL
◆	VARIATED CAREX	3 GAL
◆	COLUMNAR HORNBREAM	8" HEIGHT B&B
◆	WINTER GEM BOXWOOD	24"-30" B&B
◆	WINTER GEM BOXWOOD	3 GAL
◆	SKY PENCIL HOLLY	7 GAL
◆	BARBERRY	3 GAL
◆	BLUE STAR JUNIPER	5 GAL
◆	COLUMNAR SPRUCE	8'-10" HEIGHT B&B
◆	BLUE RUG JUNIPER	3 GAL
◆	DURAMEAT BIRCH	8'-10" HEIGHT (CLUMP 2/3) B&B
◆	GOLD TREPAD CYPRESS	5 GAL
◆	NORWAY SPRUCE	6'-8" HEIGHT B&B
◆	MAIDEN GRASSES	3 GAL

REVISION & DATE

**FERRY LANDING AT BEACON, LTD**  
 DEVELOPERS · DESIGNERS · BUILDERS  
 POST OFFICE BOX 294  
 BEACON, NY 12508

**SITE DEVELOPMENT PLAN**  
 FOR  
**FERRY LANDING AT BEACON**  
 BEEKMAN AND FERRY STREET  
 BEACON, NY 12508

DATED: MARCH 1, 2017  
 SCALE: 1" = 20'-0"  
 DRAWING:  
**3 OF 9**