

LEGEND

	EXISTING PROPERTY LINE
	PROPOSED PROPERTY LINE
	EXISTING ADJOINER LINE
	EXISTING TREE
	EXISTING MAJOR CONTOUR
	EXISTING MINOR CONTOUR
	PROPOSED MAJOR CONTOUR
	PROPOSED MINOR CONTOUR
	PROPOSED SEWER MAIN
	PROPOSED SILT FENCE
	EXISTING OVERHEAD WIRE
	EXISTING FENCE
	EXISTING WATER MAIN
	EXISTING WATER SERVICE LINE
	PROPOSED DRAINAGE LINE
	PROPOSED WATER MAIN
	PROPOSED WATER SHUT-OFF VALVE
	PROPOSED HYDRANT
	PROPOSED SEWER MANHOLE
	PROPOSED CATCH BASIN

DCDOH STANDARD NOTE:
FOR PERMISSION TO FILE
 THIS PLAN DOES NOT CONSTITUTE A REALTY SUBDIVISION AS DEFINED BY ARTICLE XI, TITLE II, SECTION 1115 OF THE PUBLIC HEALTH LAW OF THE STATE OF NEW YORK, AND ARTICLE XI OF THE DUTCHESS COUNTY SANITARY CODE. PERMISSION IS HEREBY GRANTED FOR THE FILING OF THIS MAP WITH THE CLERK OF DUTCHESS COUNTY. APPROVAL FOR ARRANGEMENTS FOR WATER SUPPLY AND/OR SEWAGE DISPOSAL IS NEITHER SOUGHT NOR GRANTED.

AUTHORIZED REPRESENTATIVE OF THE COMMISSIONER OF HEALTH _____ DATE _____

APPROVED BY RESOLUTION OF THE BOARD OF THE CITY OF BEACON, NEW YORK, ON THE _____ DAY OF _____, 20____, SUBJECT TO ALL REQUIREMENTS AND CONDITIONS OF SAID RESOLUTION. ANY CHANGE, ERASURE, MODIFICATION OR REVISION OF THIS PLAT, AS APPROVED, SHALL VOID THIS APPROVAL.

SIGNED THIS _____ DAY OF _____, 20____ BY _____

_____ CHAIRMAN
 _____ SECRETARY

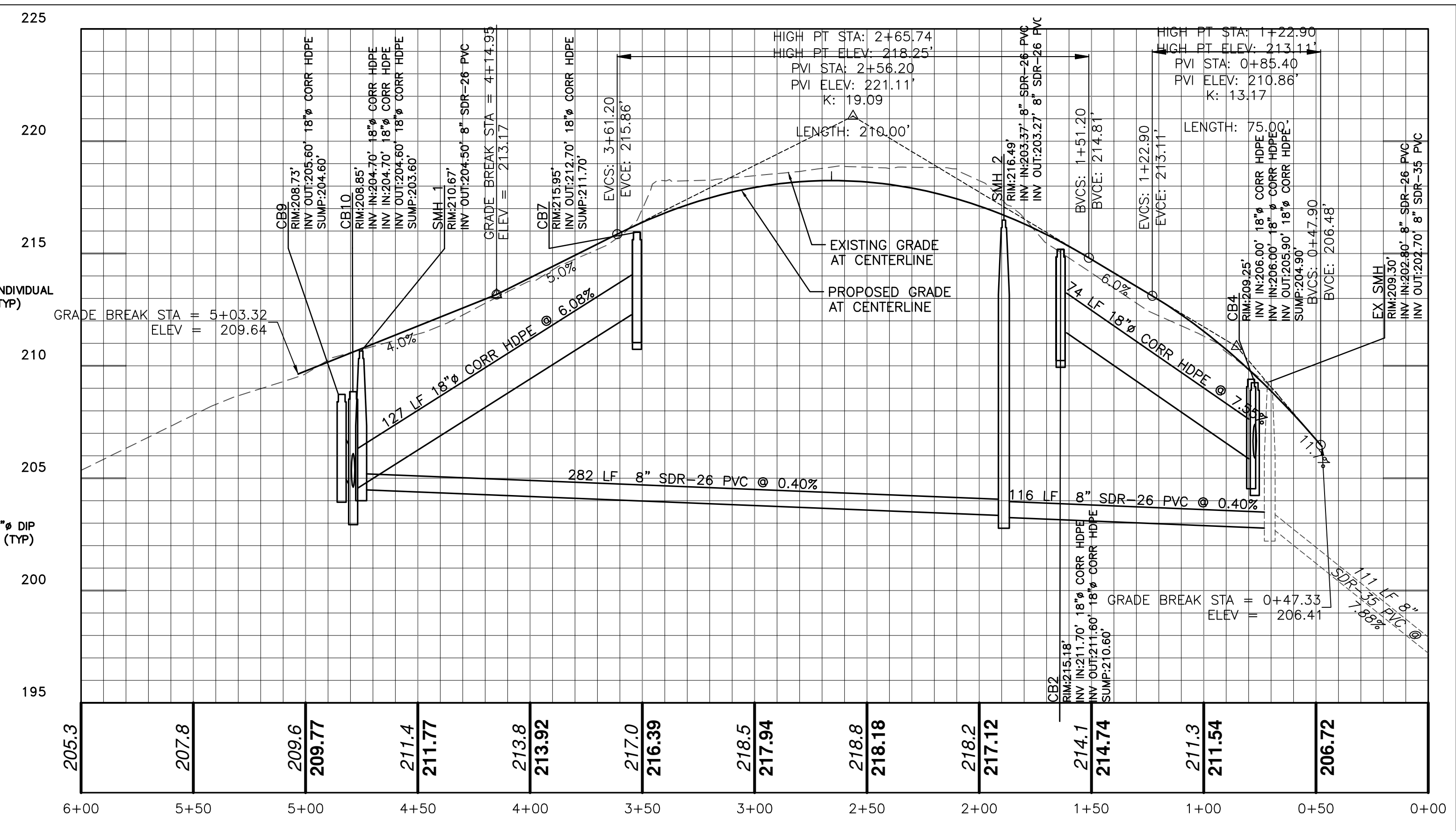
IN ABSENCE OF THE CHAIRMAN OR SECRETARY, THE ACTING CHAIRMAN OR ACTING SECRETARY RESPECTIVELY MAY SIGN IN THIS PLACE.

ROAD WIDTH TRANSITION NOTES:

- TOWNSEND ROAD IS APPROXIMATELY 29.5 FEET WIDE NEAR ITS CURRENT TERMINATION.
- THE PROPOSED ROAD IS CLASSIFIED AS A LOCAL ROAD BY CITY OF BEACON STANDARDS AND IS THEREFORE 24 FEET WIDE.
- THE TRANSITION TO 12-FOOT LANES IS AS FOLLOWS:
 - STATION 0+00 O/S RIGHT 14.88' TO 0+91.37 O/S RIGHT 12.00' - REQUIRES REMOVAL OF EXISTING CURB AND PAVEMENT, AND NEW CURB TO BE INTO START OF TRANSITION
 - STATION ±0+38.48 O/S LEFT 14.73' (EDGE OF EXISTING DRIVEWAY - TO BE CONFIRMED BY CONTRACTOR) TO 1+28.46 O/S LEFT 12.00' - GENERALLY FOLLOWS THE EXISTING EDGE OF PAVEMENT TO THE PROPERTY LINE

OWNER'S CONSENT:
 THE UNDERSIGNED OWNER OF THE PROPERTY HEREON STATES THAT HE IS FAMILIAR WITH THIS MAP, ITS CONTENTS AND ITS LEGENDS AND HEREBY CONSENTS TO ALL SAID TERMS AND CONDITIONS AS STATED HEREON.

_____ DATE _____



ROAD EXTENSION PROFILE
 SCALE: 1" = 4' V
 1" = 40' H

STORM SEWER STRUCTURE TABLE	
STRUCTURE	STRUCTURE DETAILS
CB1	RIM = 215.18 SUMP = 210.90 PIPE 1-2 INV OUT = 211.90
CB2	RIM = 215.18 SUMP = 210.60 PIPE 1-2 INV IN = 211.70 PIPE 2-4 INV OUT = 211.60
CB3	RIM = 209.40 SUMP = 205.20 PIPE 3-4 INV OUT = 206.20
CB4	RIM = 209.25 SUMP = 204.90 PIPE 2-4 INV IN = 206.00 PIPE 3-4 INV IN = 206.00 PIPE 4-5 INV OUT = 205.90
CB7	RIM = 215.95 SUMP = 211.70 PIPE 7-8 INV OUT = 212.70
CB8	RIM = 215.95 SUMP = 211.40 PIPE 7-8 INV IN = 212.50 PIPE 8-10 INV OUT = 212.40
CB9	RIM = 208.73 SUMP = 204.60 PIPE 9-10 INV OUT = 205.60
CB10	RIM = 208.85 SUMP = 203.60 PIPE 8-10 INV IN = 204.70 PIPE 9-10 INV IN = 204.70 PIPE 10-11 INV OUT = 204.60
DMH 5	RIM = 205.29 SUMP = 201.00 PIPE 4-5 INV IN = 202.10 PIPE 5-6 INV OUT = 202.00
DMH 11	RIM = 209.47 SUMP = 202.90 PIPE 10-11 INV IN = 204.00 PIPE 11-12 INV OUT = 203.90

FLARED END SECTION TABLE	
STRUCTURE	STRUCTURE DETAILS
FES 6	PIPE 5-6 INV IN = 197.00
FES 12	PIPE 11-12 INV IN = 197.00

STORM SEWER PIPE TABLE			
PIPE NAME	LENGTH	SIZE AND MATERIAL	SLOPE
PIPE 1-2	20 LF	18" CORR HDPE	0.98%
PIPE 2-4	74 LF	18" CORR HDPE	7.55%
PIPE 3-4	19 LF	18" CORR HDPE	1.06%
PIPE 4-5	376 LF	18" CORR HDPE	1.01%
PIPE 5-6	108 LF	18" CORR HDPE	4.62%
PIPE 7-8	17 LF	18" CORR HDPE	1.19%
PIPE 8-10	127 LF	18" CORR HDPE	6.08%
PIPE 9-10	87 LF	18" CORR HDPE	1.03%
PIPE 10-11	58 LF	18" CORR HDPE	1.03%
PIPE 11-12	50 LF	18" CORR HDPE	13.82%

SANITARY SEWER STRUCTURE TABLE	
STRUCTURE	STRUCTURE DETAILS
EX SMH	RIM = 209.30 SUMP = 202.70 PIPE 2-EX INV IN = 202.80 EX. PIPE INV OUT = 202.70
SMH 1	RIM = 210.67 SUMP = 204.50 PIPE 1-2 INV OUT = 204.50
SMH 2	RIM = 216.49 SUMP = 203.27 PIPE 1-2 INV IN = 203.37 PIPE 2-EX INV OUT = 203.27

SANITARY SEWER PIPE TABLE			
PIPE NAME	LENGTH	SIZE AND MATERIAL	SLOPE
PIPE 1-2	282 LF	8" SDR-26 PVC	0.40%
PIPE 2-EX	116 LF	8" SDR-26 PVC	0.40%
EX. PIPE	111 LF	8" SDR-35 PVC	7.88%

UTILITY PLAN
25 TOWNSEND STREET

25 TOWNSEND STREET
 CITY OF BEACON
 DUTCHESS COUNTY, NEW YORK
 TAX ID: 8055-03-383149
 SCALE: 1" = 40'
 DECEMBER 7, 2015



HUDSON LAND DESIGN
 PROFESSIONAL ENGINEERING P.C.
 174 MAIN STREET
 BEACON, NEW YORK 12508
 PH: 845-440-6926 F: 845-440-6637



SEAL
 JON D. BODENDORF, P.E.
 NYS LICENSE NO. 076245
 DANIEL G. KOHLER, P.E.
 NYS LICENSE NO. 082716

Dig Safely. New York
 800-962-7962
 www.digsafelynewyork.org

Call Before You Dig
 Wait The Required Time
 Confirm Utility Response
 Respect The Marks
 Dig With Care

DRAWN BY: JDB CHECKED BY: MAB JOB NO.: 2015:025			
REVISIONS:			
NO.	DATE	DESCRIPTION	BY
1	07/25/17	ADDED SHEET	JDB