

IN ABSENCE OF THE CHAIRMAN OR SECRETARY, THE ACTING CHAIRMAN OR ACTING SECRETARY
RESPECTIVELY MAY SIGN IN THIS PLACE.



L1: Wall Mounted

HUBBARDTON FORGE
"HOOD" OUTDOOR DARK
SKY COMPLIANT WALL
SCONCE #306563. 15" HIGH
X 6 1/2" WIDE. BURNISHED
STEEL FINISH. 60 W
INCANDESCENT LAMP



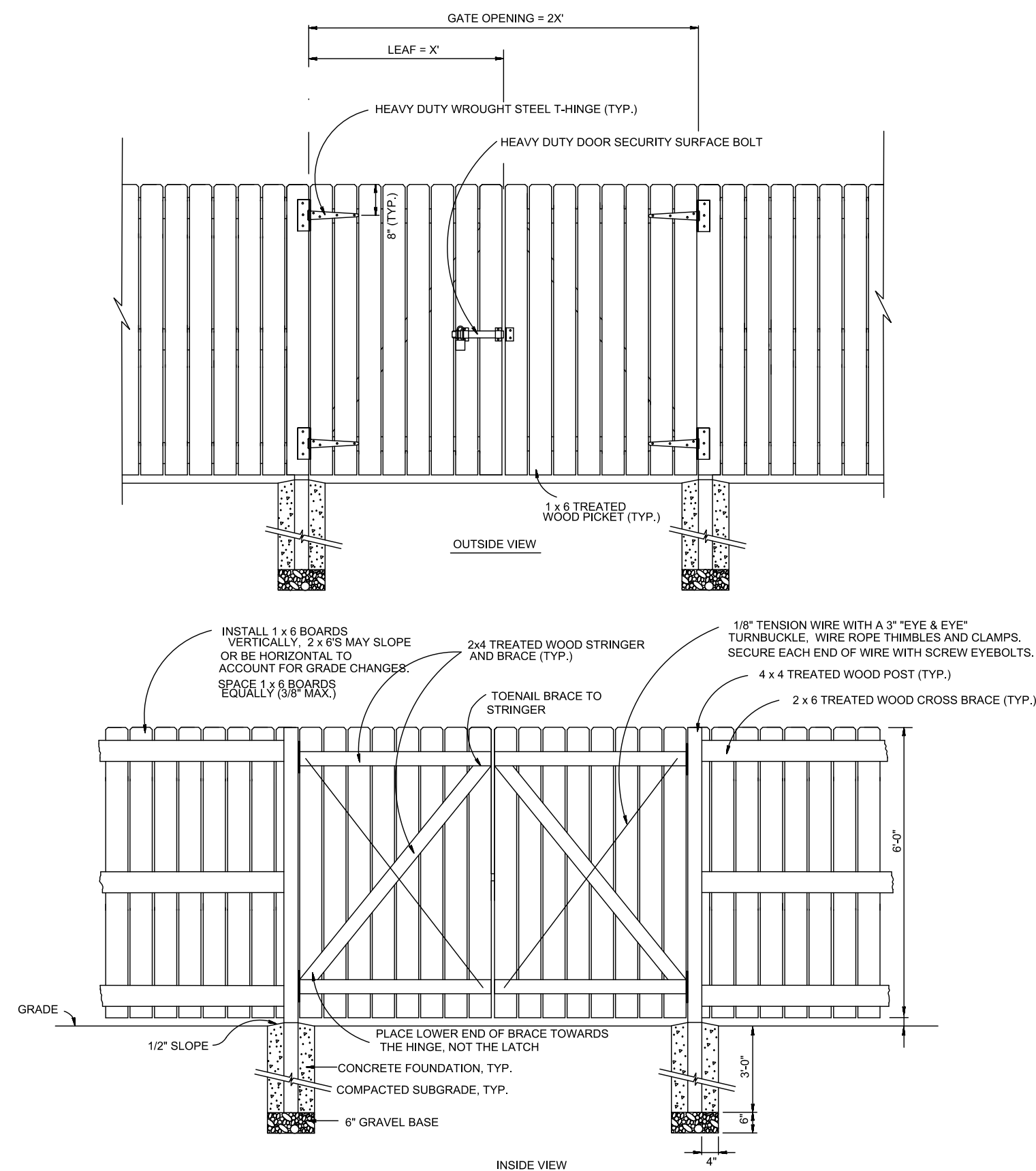
L2: Path Light

SHIELDED PATH LIGHT #303 P1.
BURNISHED STEEL FINISH. 8.5
WATT LED, COLOR
TEMPERATURE 3500 K. FINISH
COLOR: BLACK

NOTE: THE MANUFACTURER DOES NOT PROVIDE PHOTOMETRIC INFORMATION FOR THESE FIXTURES. FIXTURES WILL BE SHIELDED TO AVOID LIGHT SPILLAGE ONTO ADJACENT PROPERTIES, AND TO SHIELD FROM LIGHT PROJECTING UPWARD TO THE SKY.

Lighting

Not to Scale



Trash Enclosure Details

Scale: 1/2" = 1'-0"

Owner:
Frog Leap, Inc.

177 Main Street
Beacon, New York 12508

Architect:
Aryeh Siegel, Architect

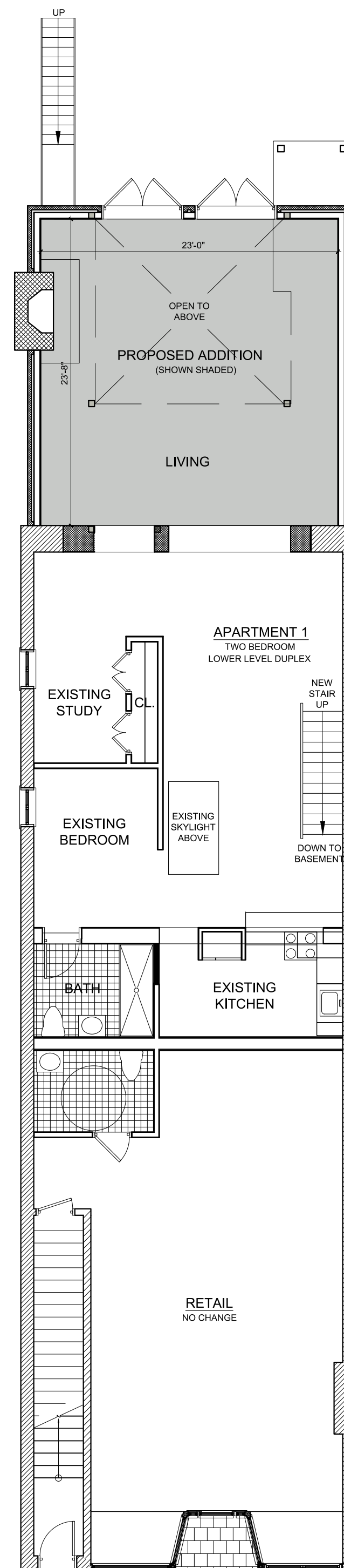
84 Mason Circle
Beacon, New York 12508

Surveyor:
David Scott Freeman

176 Bell Hollow Road
Putnam Valley, New York 10579
Tel: (631) 926-4563

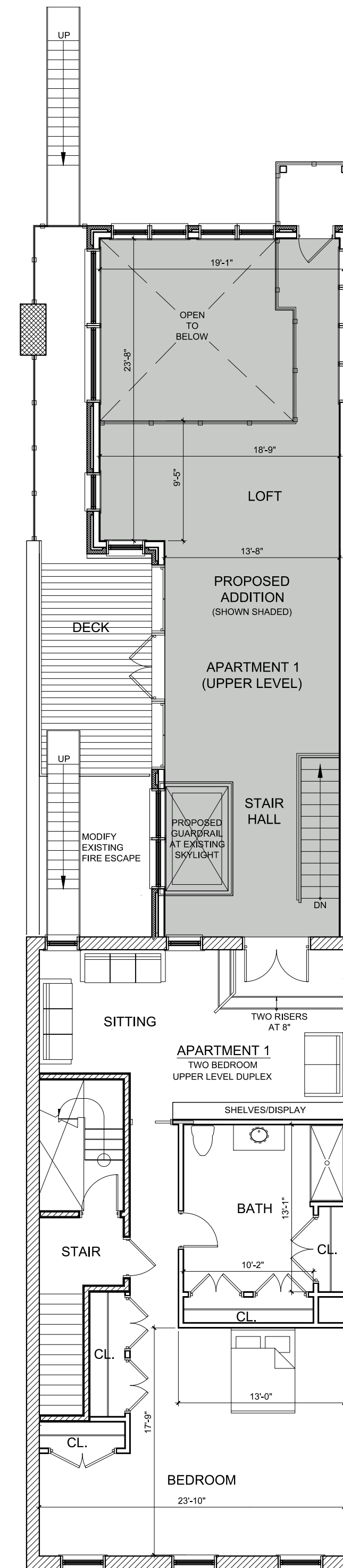
Site / Civil Engineer:
Hudson Land Design

174 Main Street
Beacon, New York 12508



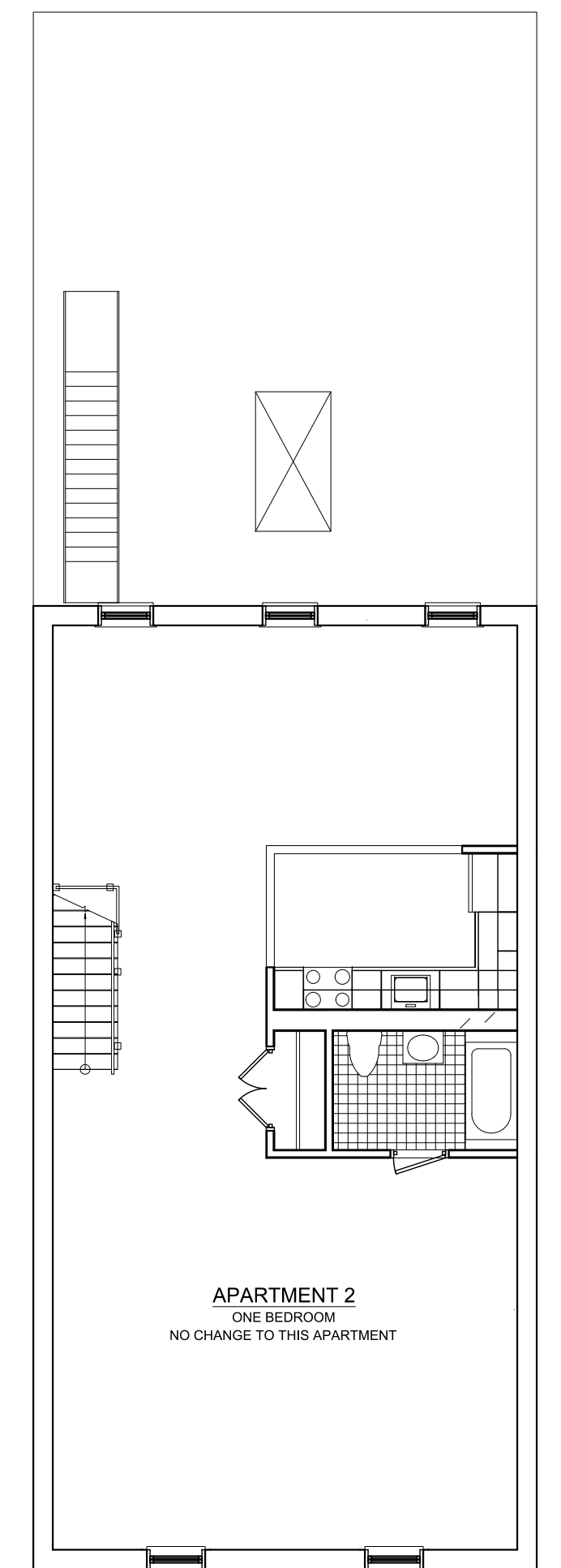
1st Floor Plan

Scale: 1/8" = 1'-0"



2nd Floor Plan

Scale: 1/8" = 1'-0"



3rd Floor Plan (no change)

Scale: 1/8" = 1'-0"

REVISIONS:			
NO.	DATE	DESCRIPTION	BY
1	5/30/17	REVISED PER PLANNING BOARD COMMENTS	AJS
2	6/27/17	REVISED PER PLANNING BOARD COMMENTS	AJS

Amended Special Use Permit Application

Sheet 3 of 6 - Floor Plans

177 Main Street - Renovation

Beacon, New York
Scale: As Noted
April 25, 2017