

4	6-27-17	REVISIONS PER CITY CONSULTANT COMMENTS	JLL
3	5-30-17	REVISIONS PER CITY CONSULTANT COMMENTS	CTO
2	4-25-17	REVISIONS PER CITY CONSULTANT COMMENTS	CTO
1	3-29-17	REVISIONS PER CITY CONSULTANT COMMENTS	CTO
NO.	DATE	REVISION	BY

**INSITE**

ENGINEERING, SURVEYING &  
LANDSCAPE ARCHITECTURE, P.C.

3 Garrett Place  
Garrett, NY 13052  
(845) 225-9717 fax  
www.insite-ny.com

PROJECT:

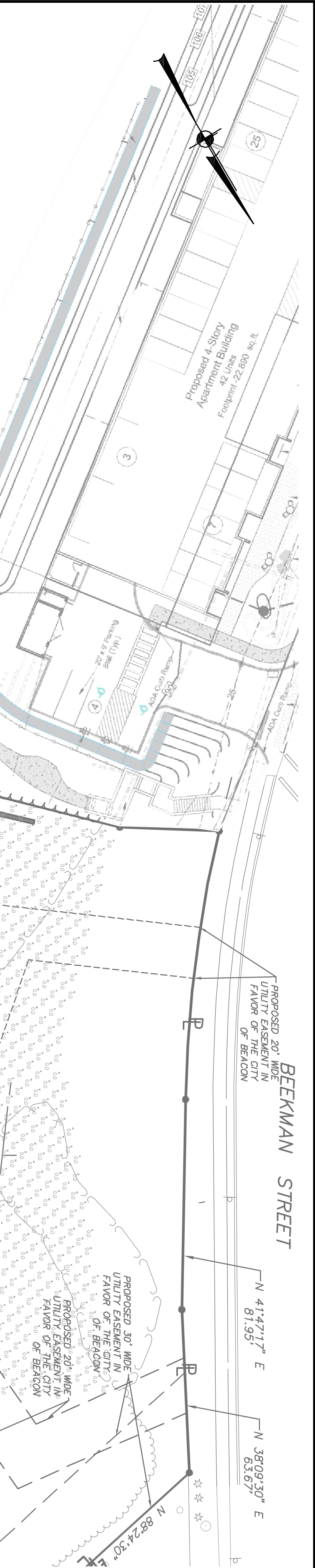
WEST END LOFTS

DRAWING: WOLCOTT AVENUE, BEACON, NEW YORK 12508

SECTIONS

PROJECT NUMBER	16226.100	PROJECT MANAGER	J.L.C.	DRAWING NO.	7
DATE	1-24-17	DRAWN BY	C.T.O.	SHEET	13
SCALE	AS SHOWN	CHECKED BY	J.L.L.		





LEGEND	
	PROPOSED PROPERTY LINE
	EXISTING CONCRETE CURB
	EXISTING TREE LINE
	EXISTING TREES
	EXISTING FENCE
	PROPOSED CURB
	PROPOSED EDGE OF SIDEWALK
	PROPOSED RETAINING WALL
	PROPOSED GUIDEWALL
	PROPOSED FENCE
	PROPOSED LIGHTS

LUMINAIRE SCHEDULE			
Symbol	Qty	Description	
A	3	D500 LED 20C TYPE 3 MEDIUM OPTICS WITH HOUSE-SIDE SHIELD, DARK BRONZE COLOR AND FINISH	20 LEDS 72.0 20'-0"
B	3	D500 LED 20C TYPE 3 MEDIUM OPTICS, DARK BRONZE COLOR AND FINISH	20 LEDS 72.0 20'-0"
C	12	MFR POST TOP LIGHT 42 LEDS 520 MA DRIVE MOUNT DISTRIBUTION, DARK BRONZE COLOR AND FINISH	42 LED HLM LIGHT ENVELOPE 75.0 14'-0"
D	34	RIVE 30/60 R06AR 120 SPECIACOLOR FINISH	LED 10.0 10'-0"

STATISTICS				
DESCRIPTION	SYMBOL	Avg	MAX	MIN
Project Lighting		0.9	1.8	0.0

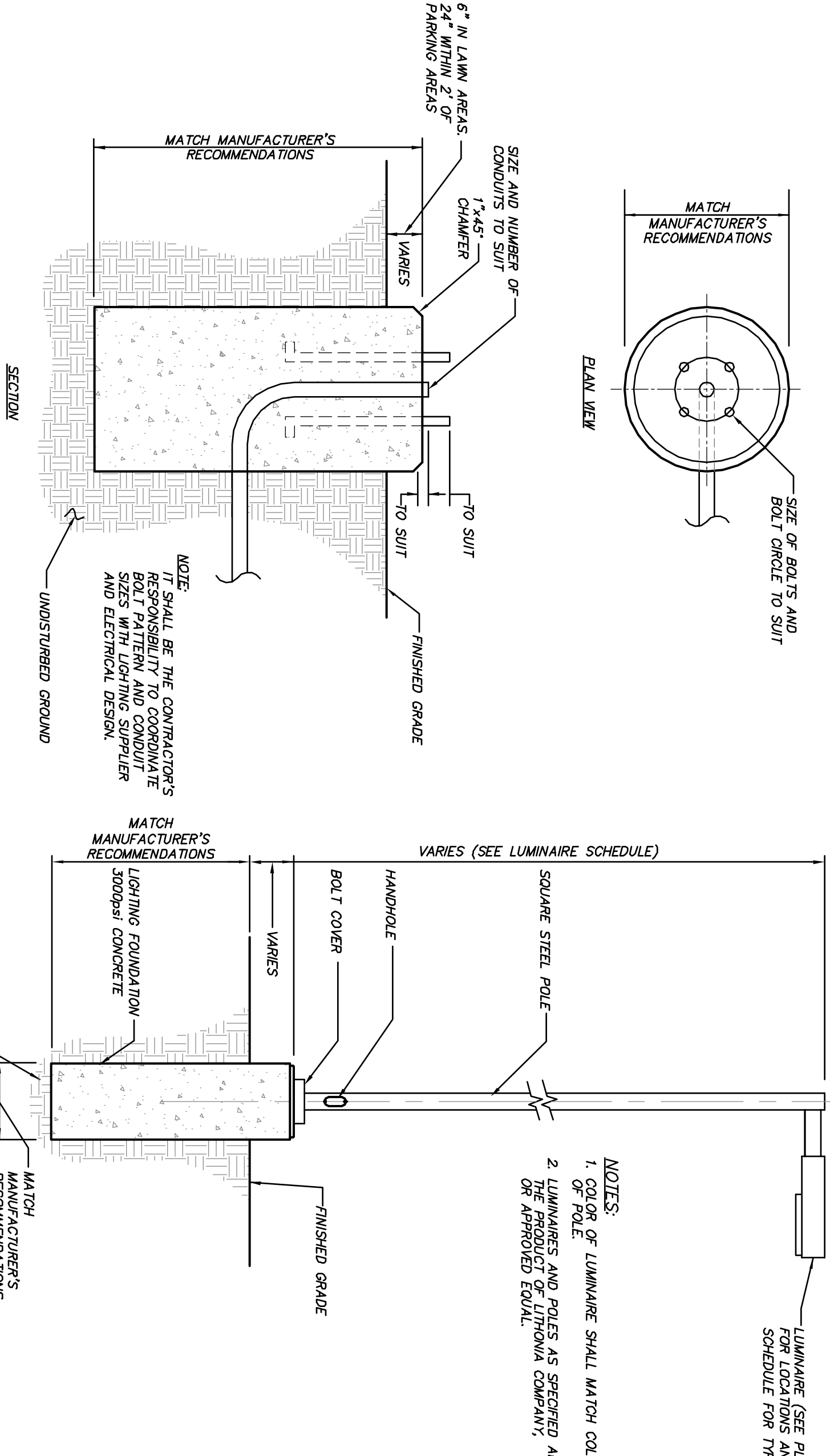
LIGHTING NOTES:

- All lighting shall be as noted on the plan or approved equal.
- Style and finish of all luminaires and poles to be selected by owner.
- Calculation values shown in this plan are taken on a horizontal plane at ground level using a 0.90 light loss factor for LEDs. Topographical information and landscaping have not been accounted for in these calculations.
- All fixtures shall be shielded to prevent lighting of the night sky.



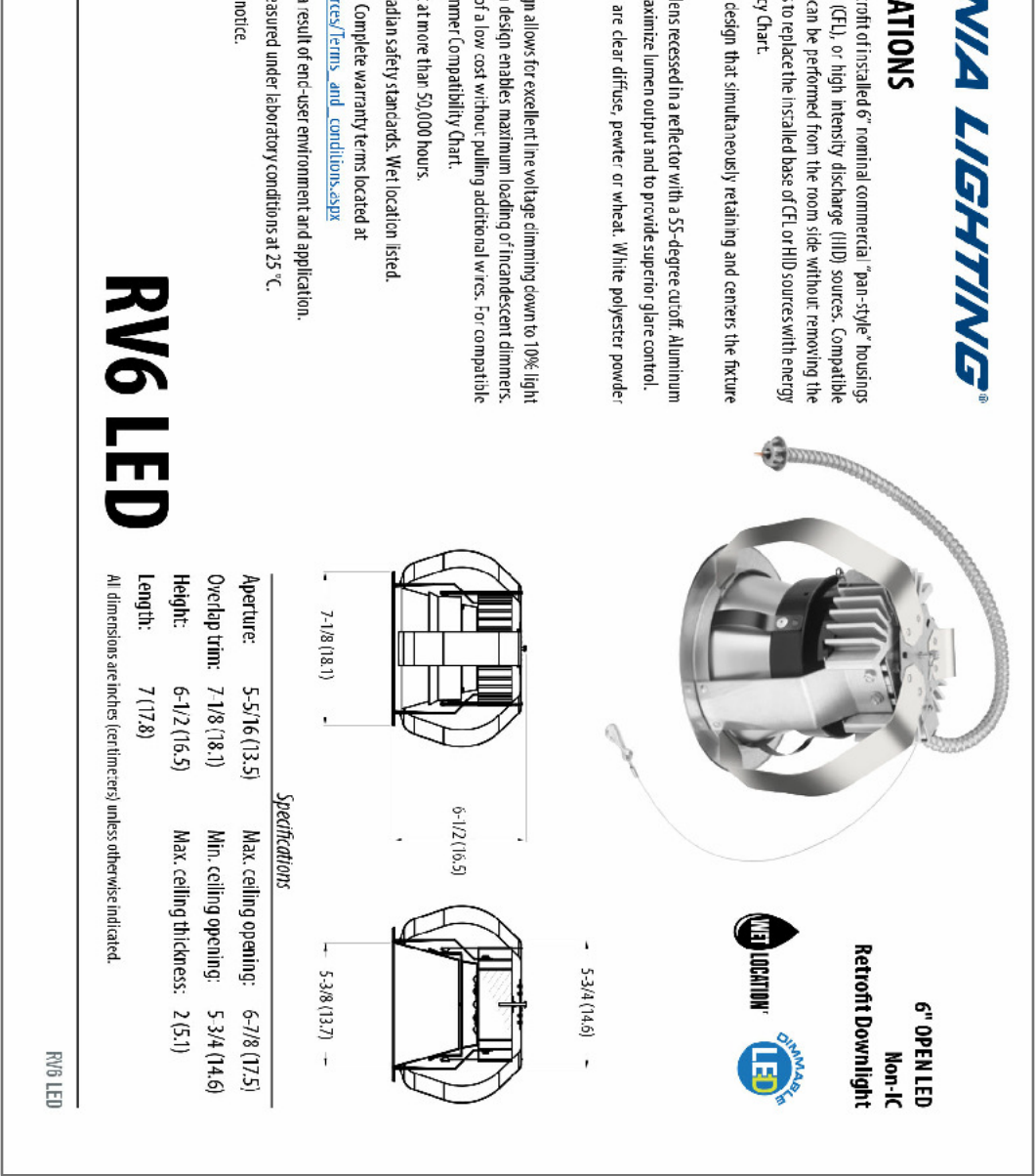
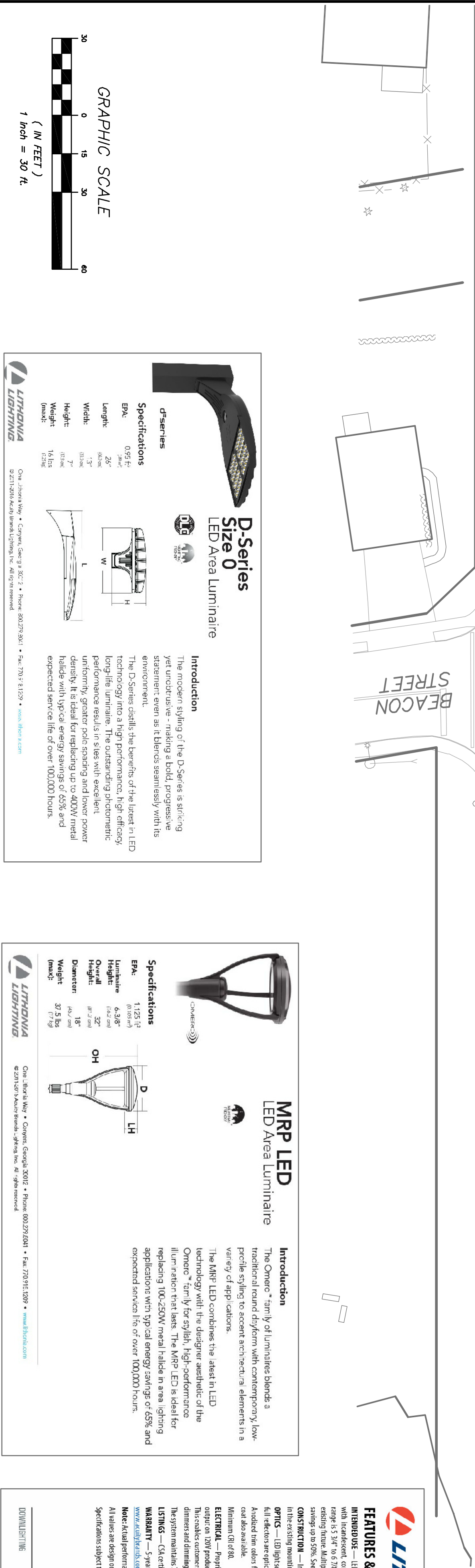
LIGHT POLE BASE DETAIL

(N.T.S.)



POLE MOUNTED LIGHT DETAIL

(N.T.S.)



REVISIONS			
NO.	DATE	REVISION	BY
1	3-29-17	REVISIONS PER CITY CONSULTANT COMMENTS	CJD
2	4-25-17	REVISIONS PER CITY CONSULTANT COMMENTS	CJD
3	5-30-17	REVISIONS PER CITY CONSULTANT COMMENTS	CJD
4	6-27-17	REVISIONS PER CITY CONSULTANT COMMENTS	JLL

PROJECT INFORMATION			
PROJECT NUMBER	16226.100	PROJECT MANAGER	J.L.C.
DATE	1-30-17	DRAWING NO.	LP-1
SCALE	1" = 30'	SHEET	8 / 13





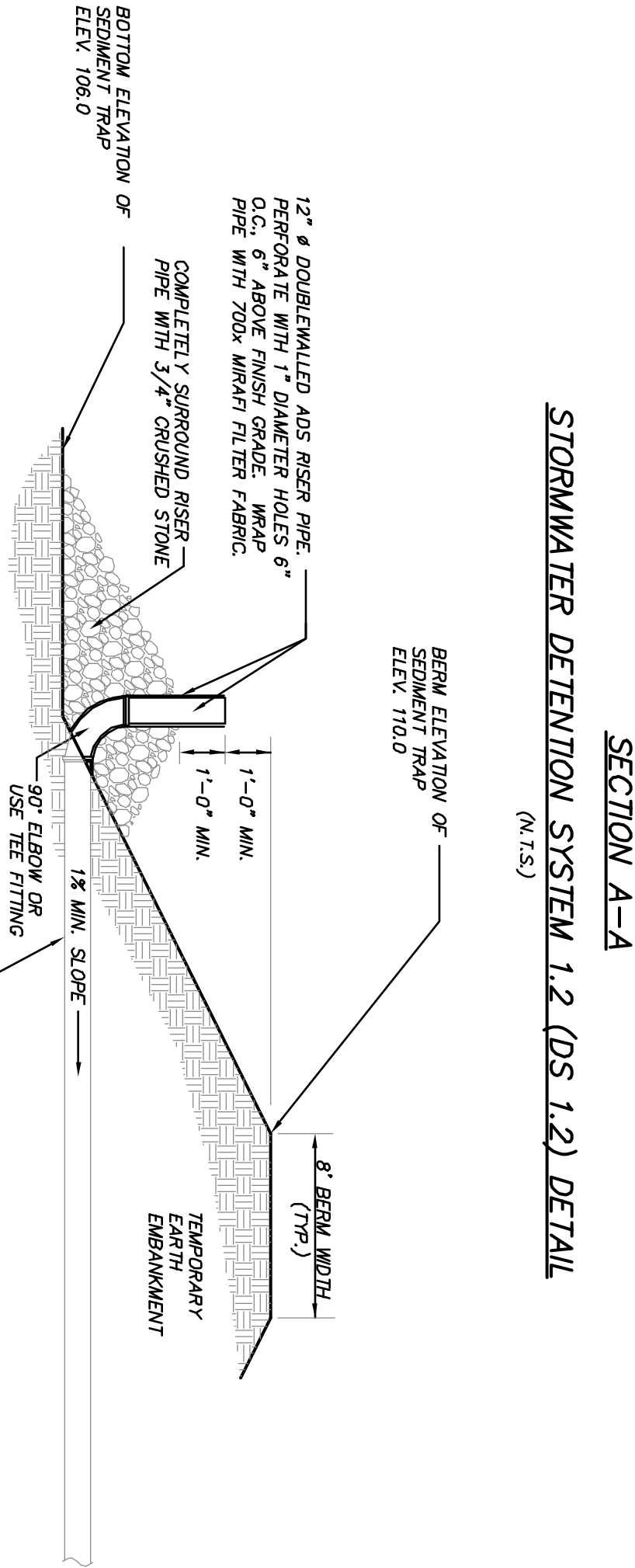
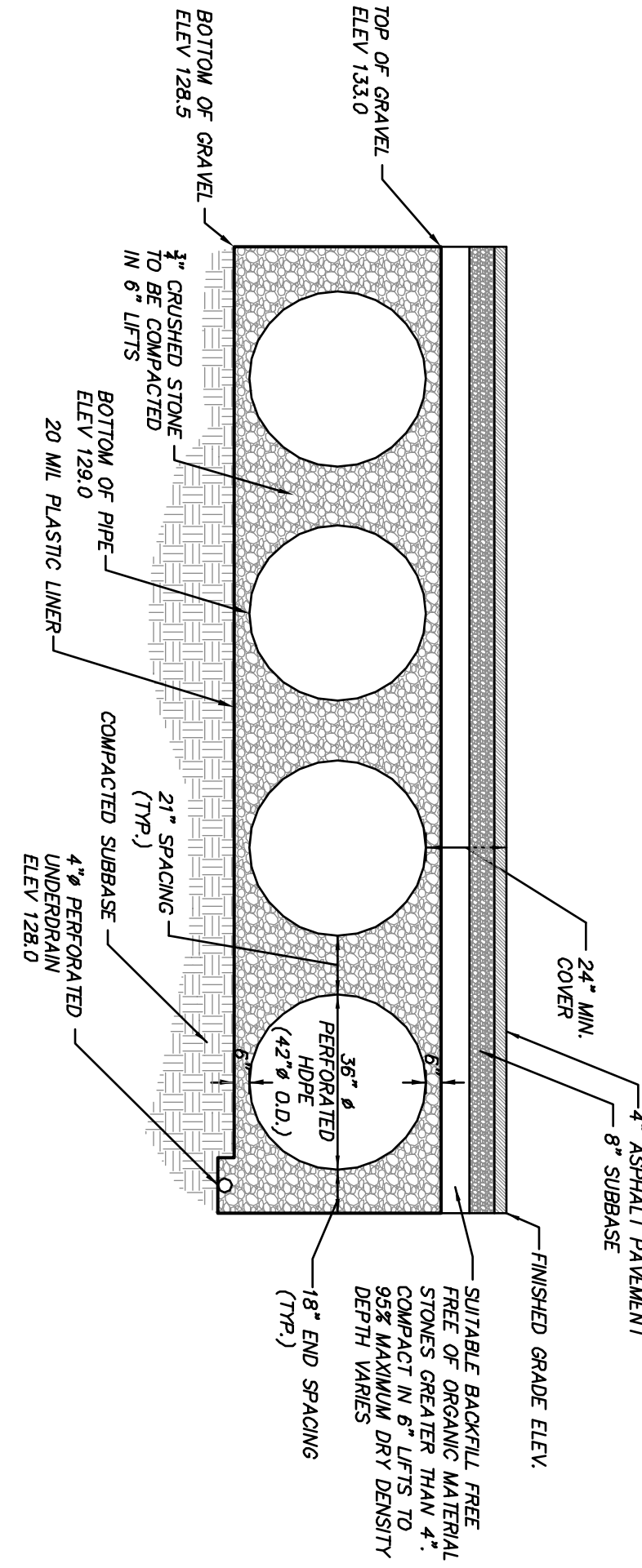
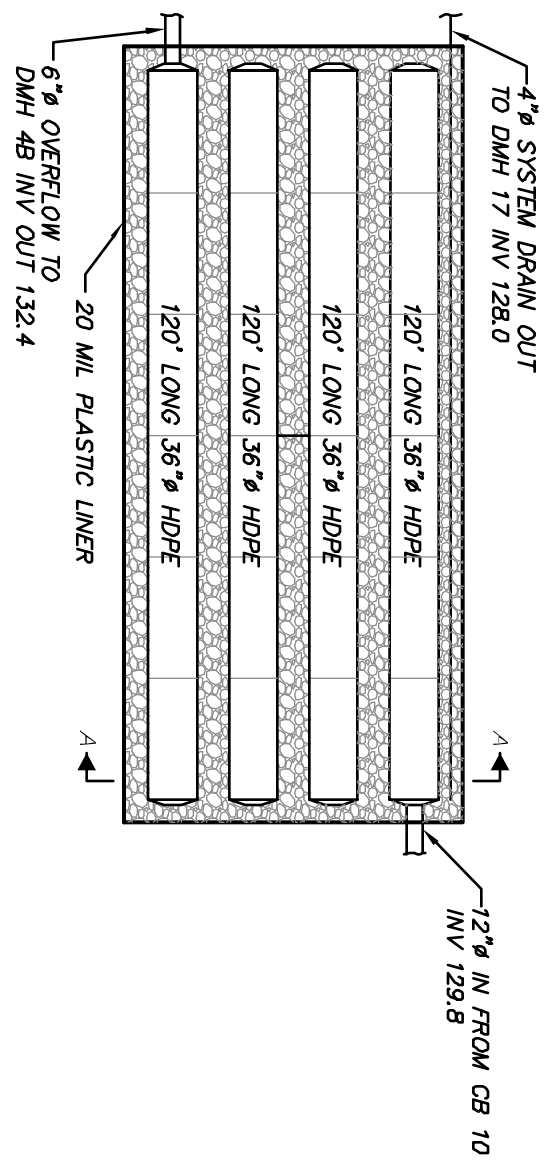
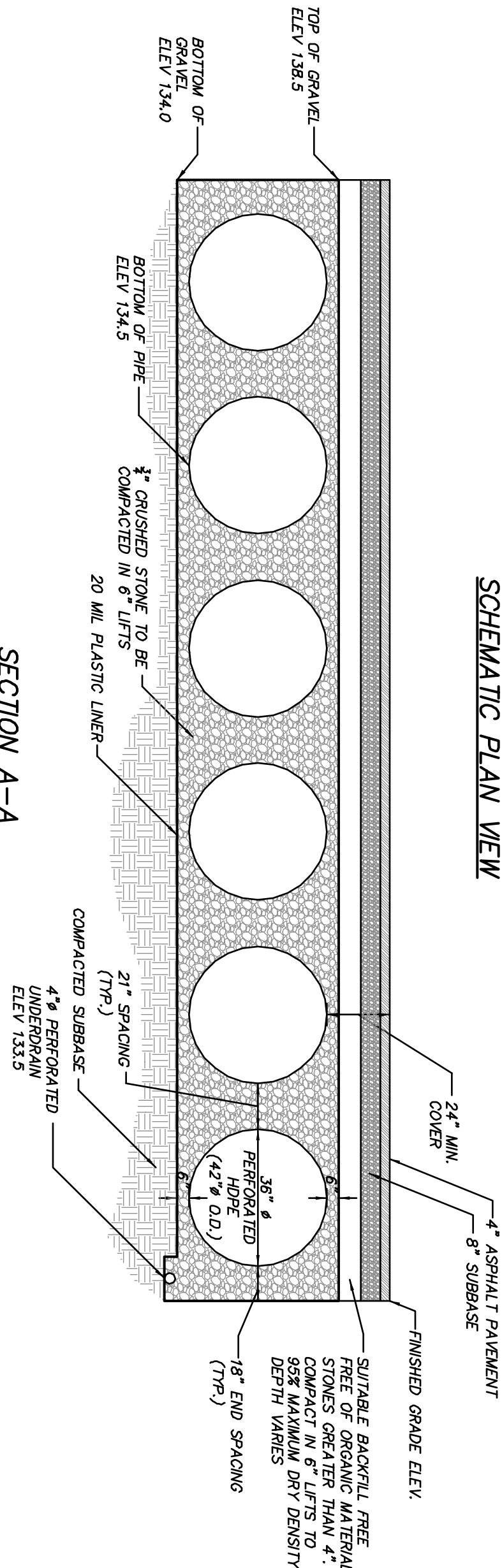
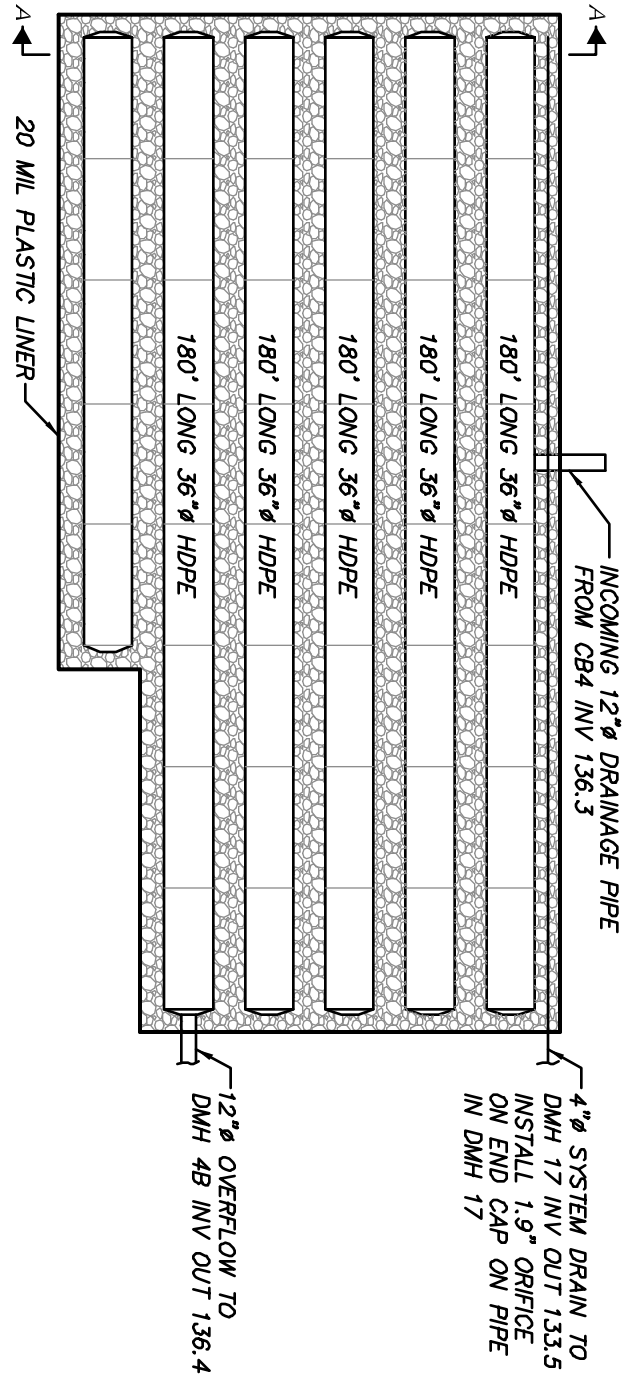






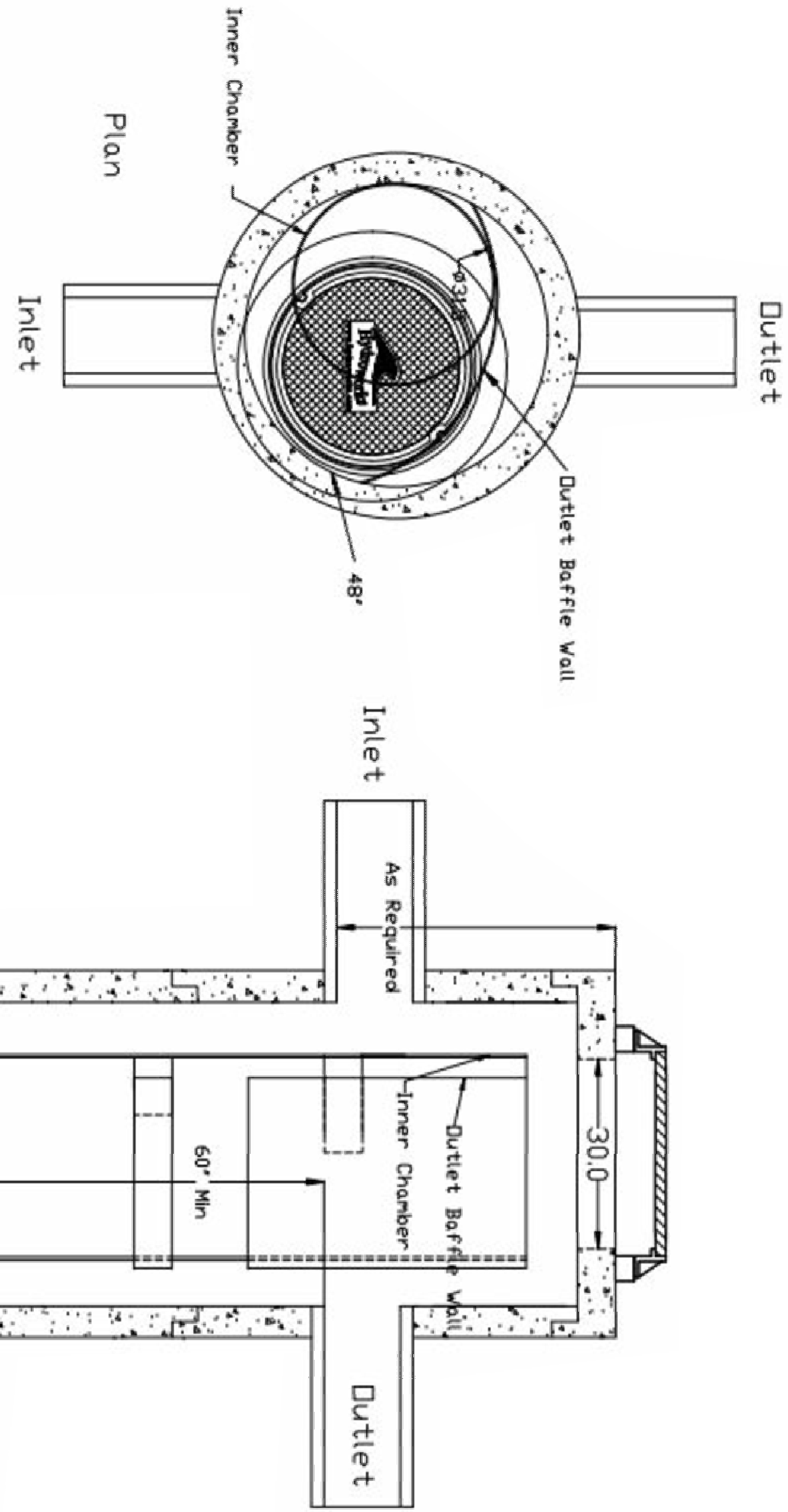
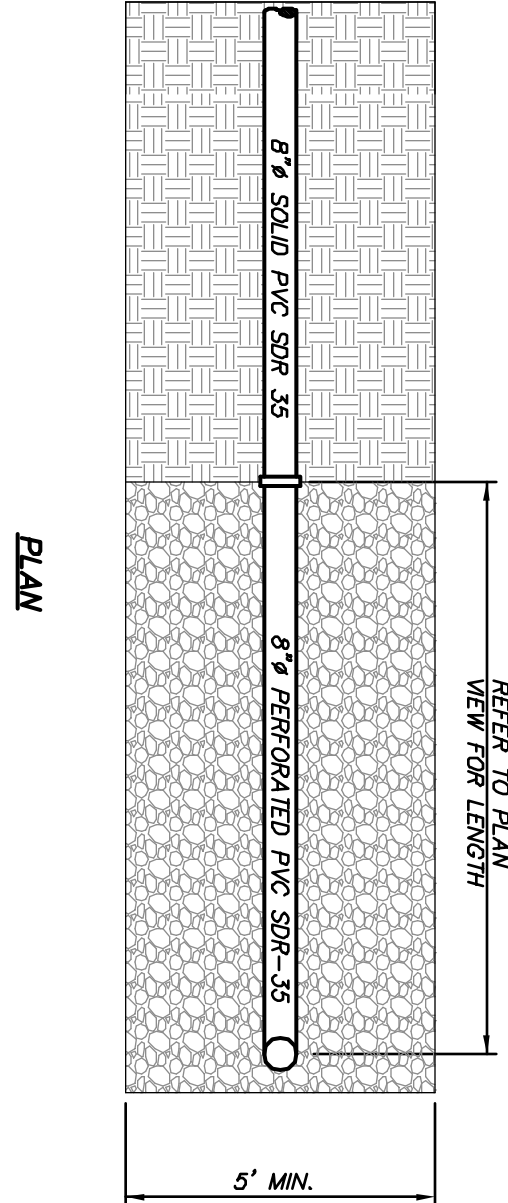
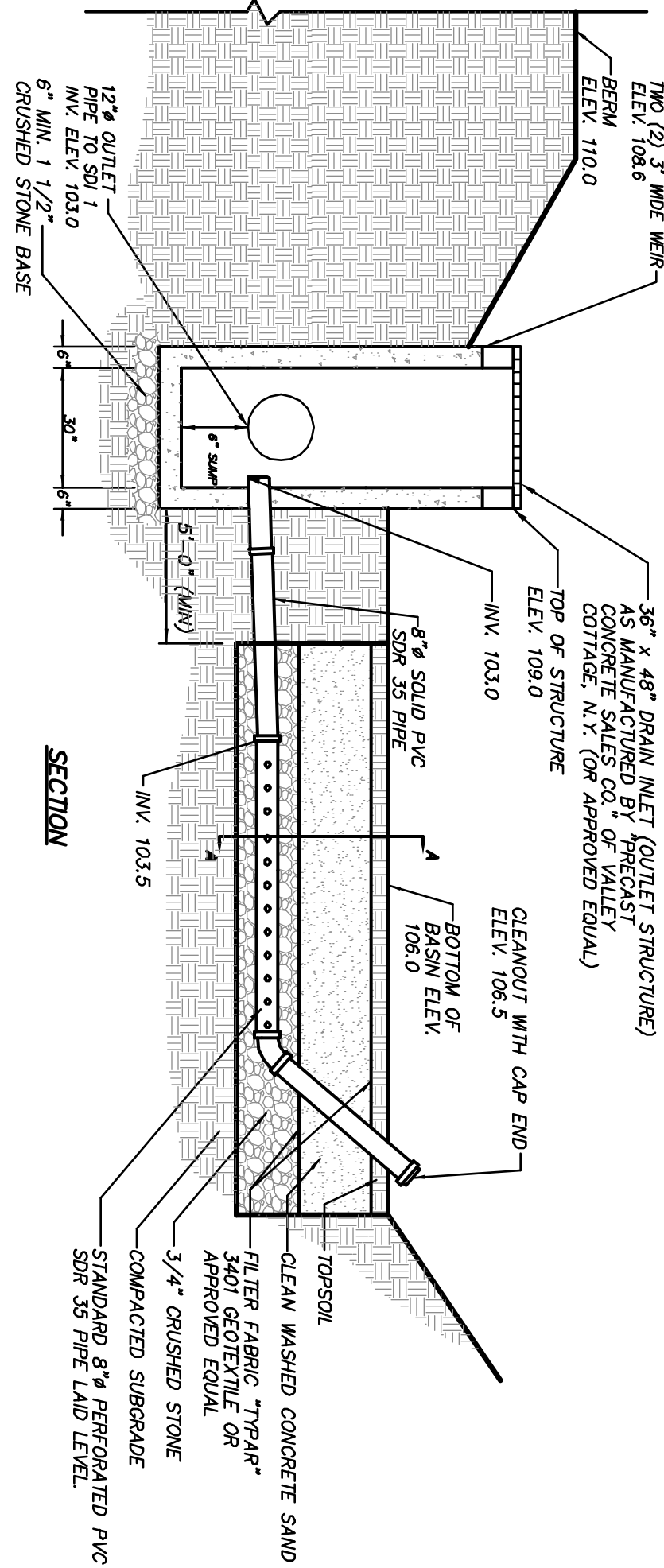
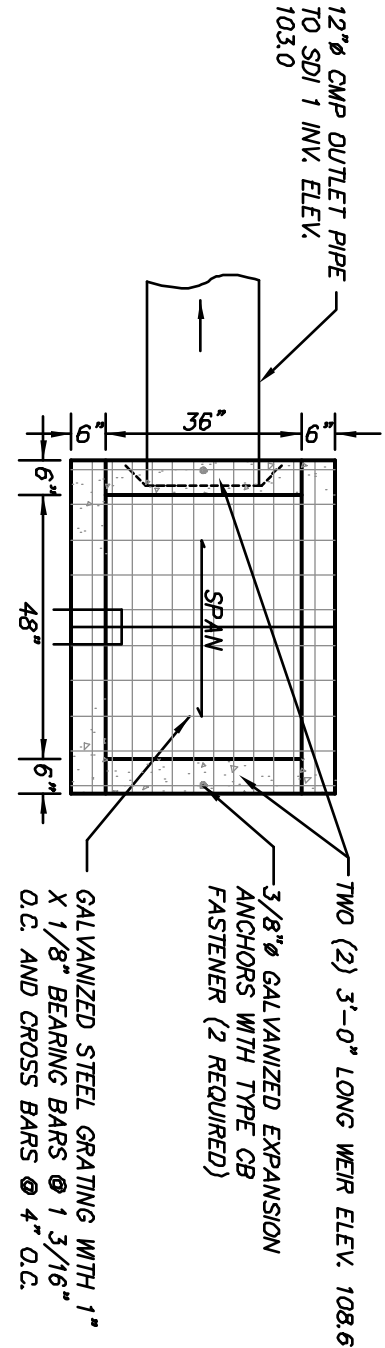






NOTE:  
1. THE PERMANENT DRY SWALE IS NOT INSTALLED UNTIL ALL PHASES OF CONSTRUCTION ARE COMPLETE.  
SEE EROSION CONTROL PLAN FOR ADDITIONAL DETAIL REGARDING THE TIMING OF INSTALLATION AND REMOVAL / CONVERSION TO DRY SWALE.

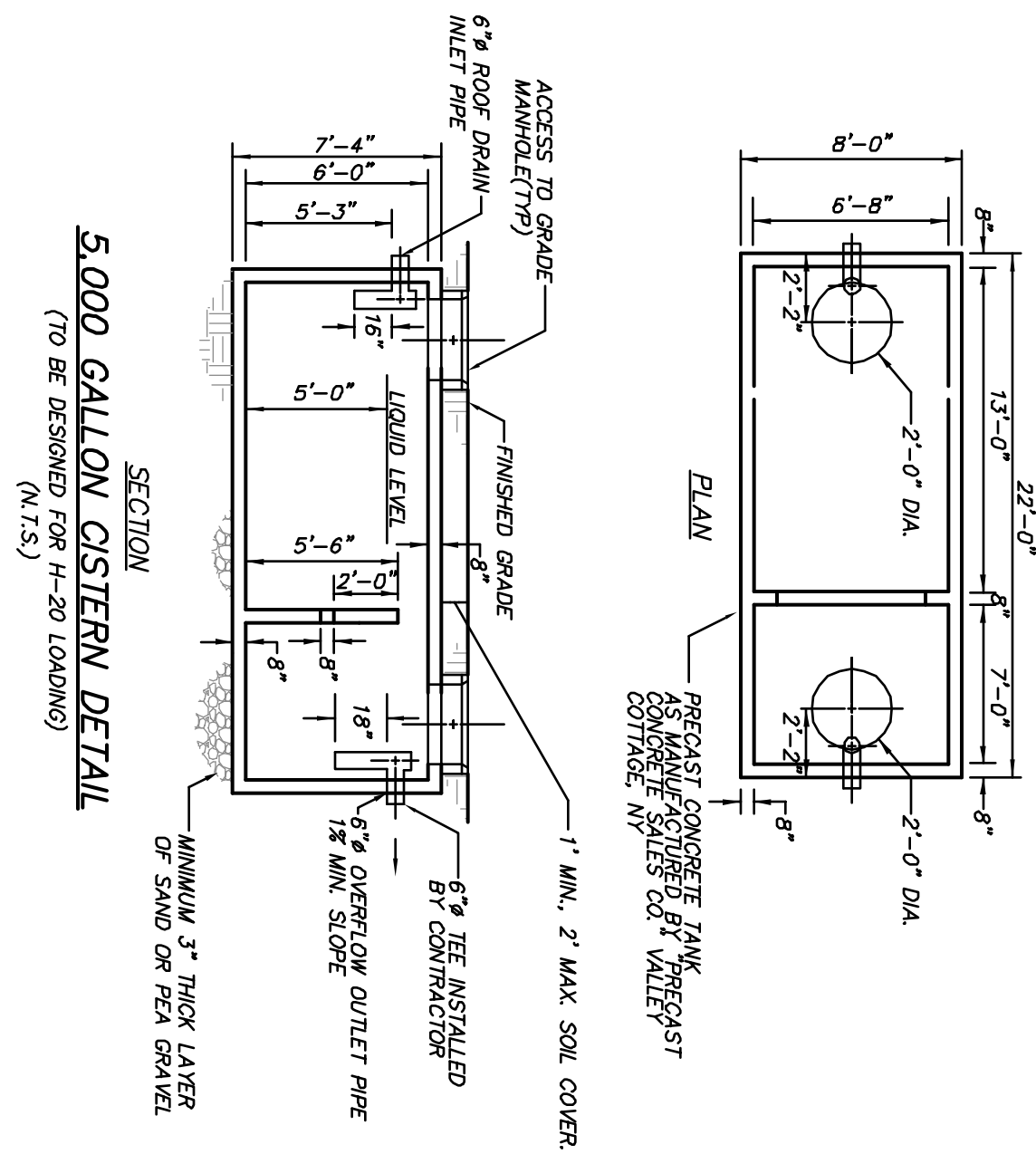
### TEMPORARY SEDIMENT TRAP RISER DETAIL



U.S. Patent No. 6,951,619

Dimensions in inches  
Minimum Flow Volume = 450 US gallons  
The Hydroguard must be cleaned after the construction period if it is used as a sediment and erosion control device.  
The Hydroguard should be inspected once per year for stabilized sites.  
Inspection will determine the maintenance frequency (for stabilized sites with unstable conditions (exposed soil or materials storage) will require more frequent inspection and maintenance.

### HYDROGUARD HG-4 HYDRODYNAMIC SEPARATORS (HDS 5 & 10)



NO.	DATE	REVISION	BY
1	4-25-17	REVISIONS PER CITY CONSULTANT COMMENTS	C/D
2	5-30-17	REVISIONS PER CITY CONSULTANT COMMENTS	C/D
3	6-27-17	REVISIONS PER CITY CONSULTANT COMMENTS	ALL

**INSITE**  
ENGINEERING, SURVEYING &  
LANDSCAPE ARCHITECTURE, P.C.  
3 Garrett Place  
Garrett, NJ 07032  
(908) 225-9800  
(908) 225-9777 fax  
www.insite-eng.com

### WEST END LOFTS

### DETAILS

PROJECT NUMBER	16226.100	PROJECT MANAGER	J.L.C.	DRAWING NO.	13
DATE	3-28-17	DRAWN BY	C.T.O.	D-5	13
SCALE	AS SHOWN	CHECKED BY	J.L.C.		