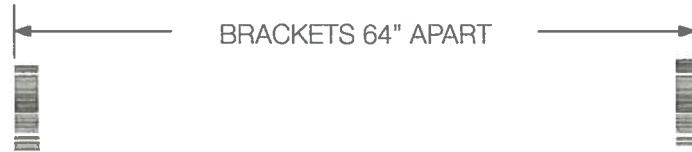




28 " x 12.5 inch Box sign
fixed to building
with brackets built into sign

2.43 square feet

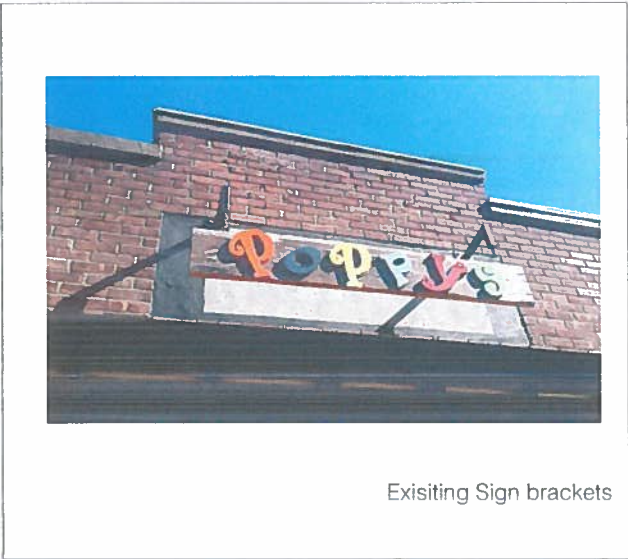


LETTERS = APPROX 87 X 5 IN

BACKGROUND - 3/4" = 96 X 12 IN

8 foot x 1 foot high
aluminum
5 inch high letters

8 square feet



Existing Sign brackets

Sign designed as a box so that it has a face parallel to the building



Sign perpendicular to the building

