

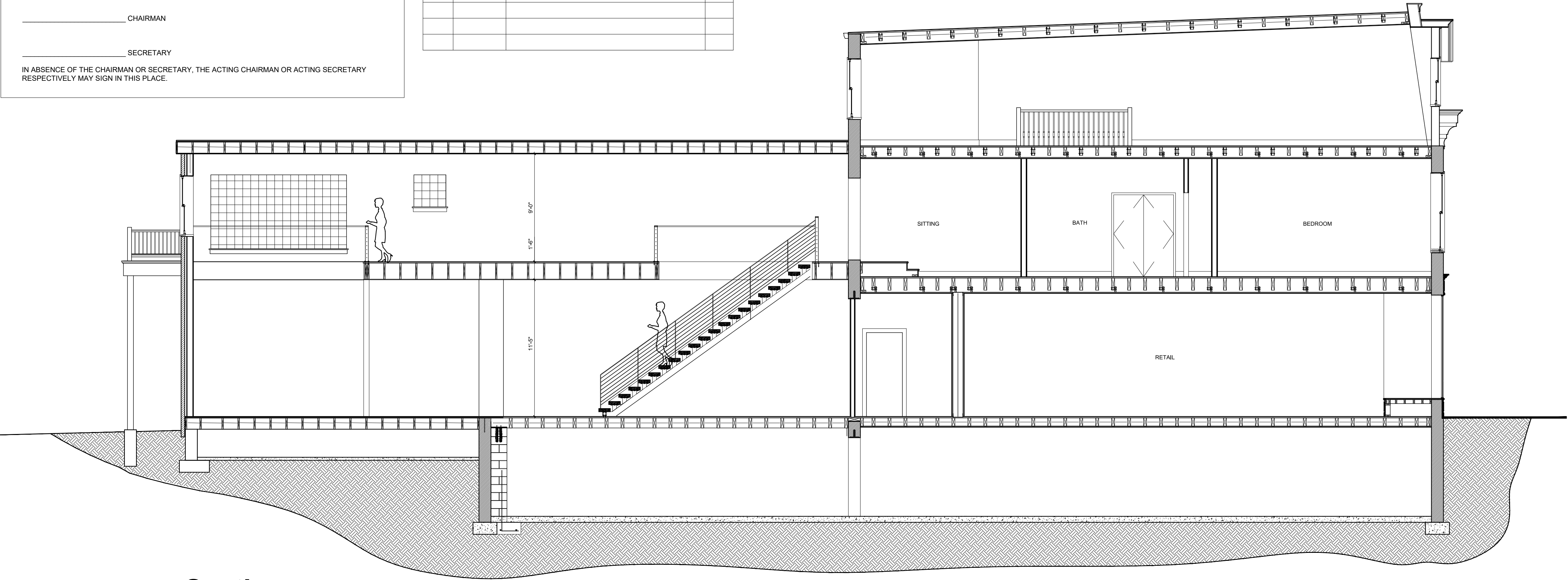
APPROVED BY RESOLUTION OF THE PLANNING BOARD OF THE CITY OF BEACON, NEW YORK, ON THE \_\_\_\_\_ DAY OF \_\_\_\_\_, 20\_\_\_\_, SUBJECT TO ALL REQUIREMENTS AND CONDITIONS OF SAID RESOLUTION, ANY CHANGE, ERASURE, MODIFICATION OR REVISION OF THIS PLAT, AS APPROVED, SHALL VOID THIS APPROVAL.

SIGNED THIS \_\_\_\_\_ DAY OF \_\_\_\_\_, 20\_\_\_\_, BY \_\_\_\_\_ CHAIRMAN

\_\_\_\_\_, SECRETARY

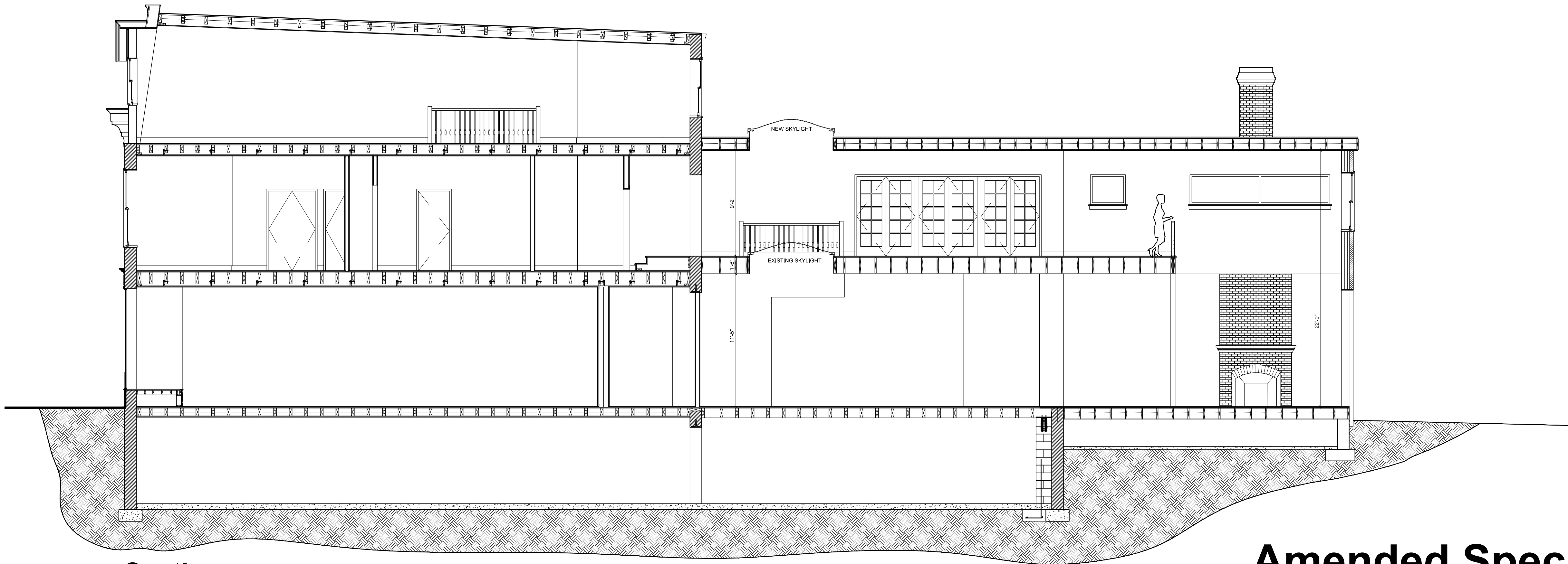
IN ABSENCE OF THE CHAIRMAN OR SECRETARY, THE ACTING CHAIRMAN OR ACTING SECRETARY RESPECTIVELY MAY SIGN IN THIS PLACE.

REVISIONS:			
NO.	DATE	DESCRIPTION	BY
1	5/30/17	REVISED PER PLANNING BOARD COMMENTS	AJS



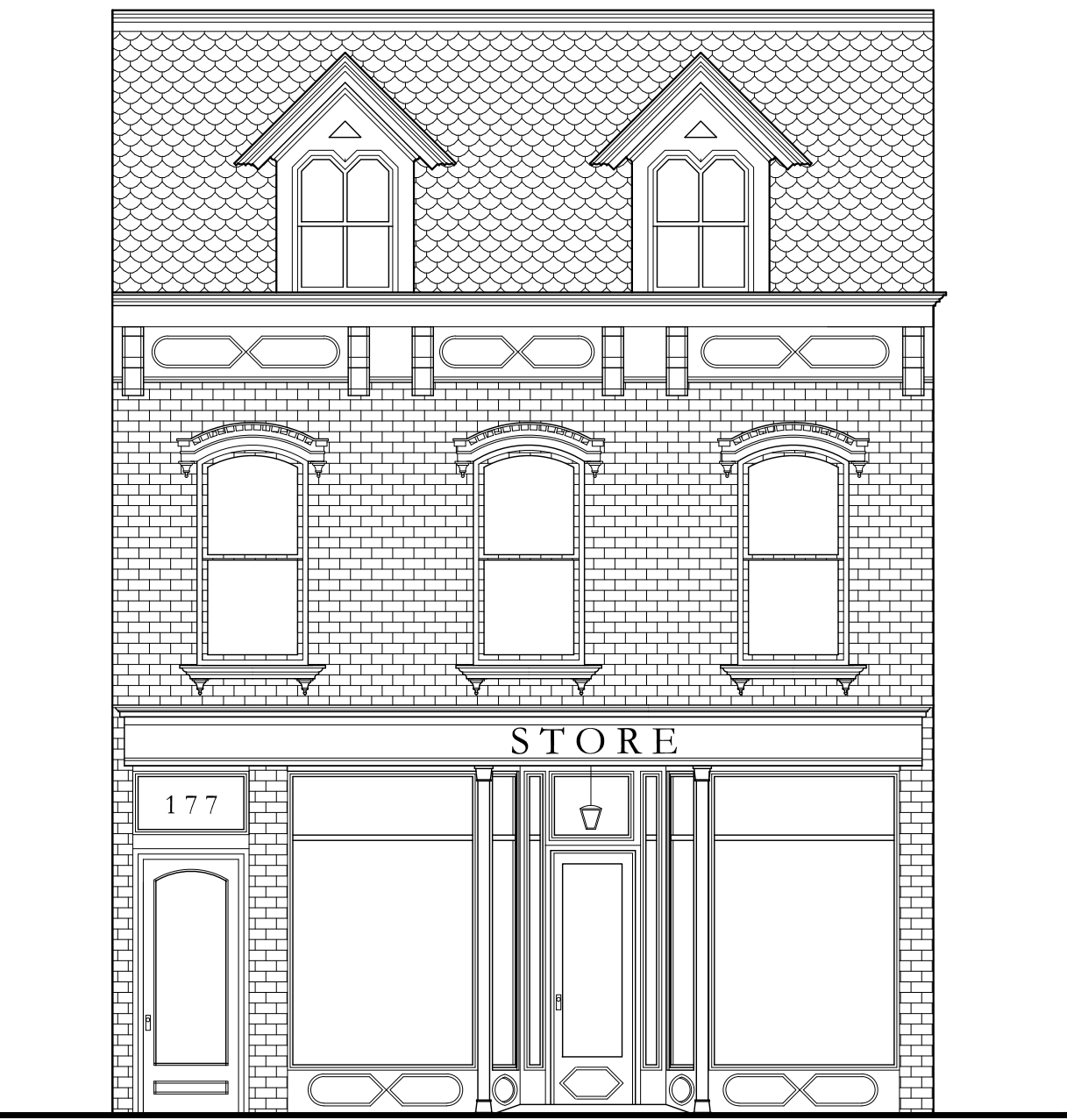
Section

Scale: 3/16" = 1'-0"



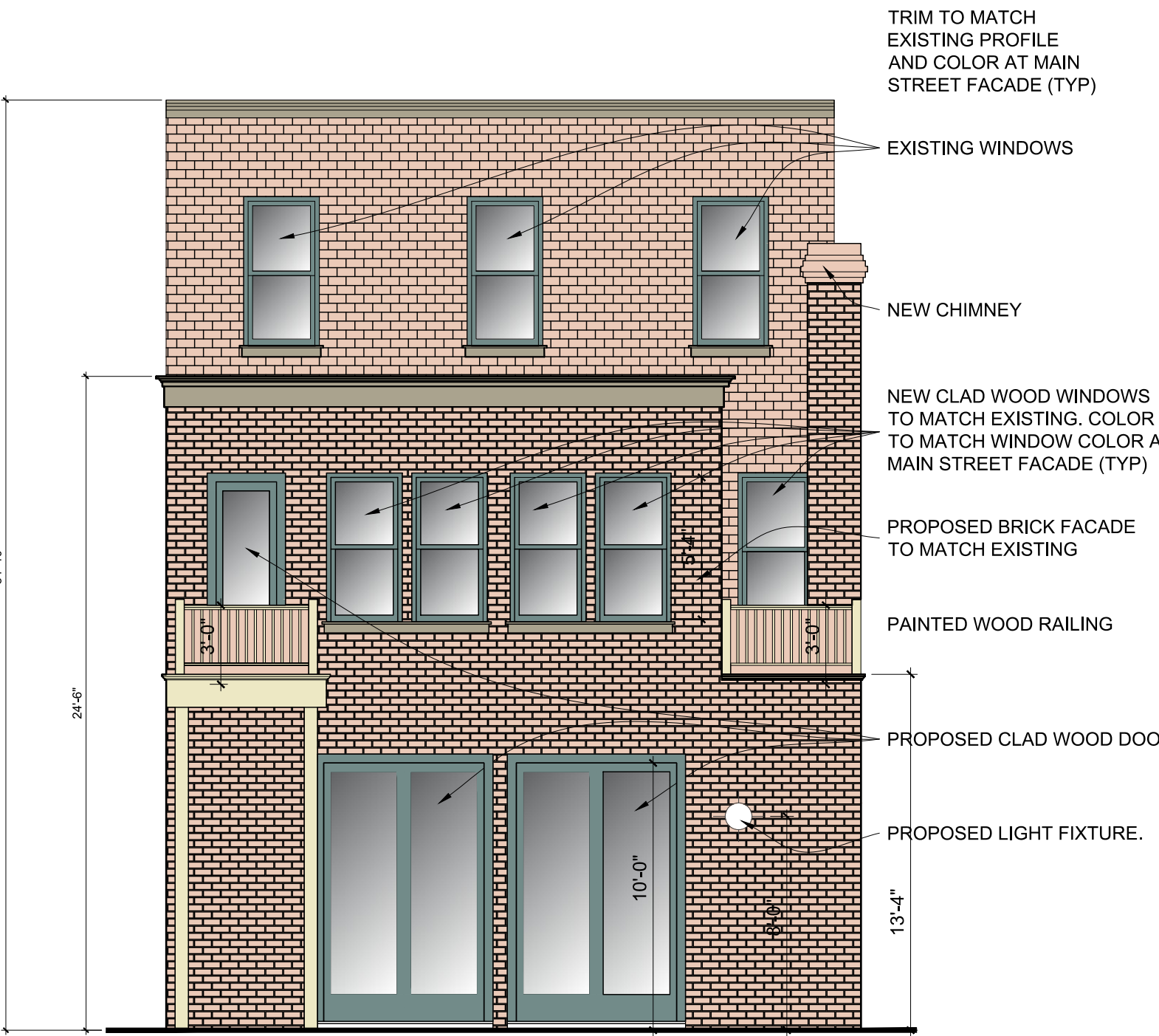
Section

Scale: 3/16" = 1'-0"



Front Elevation (Existing No Change)

Scale: 3/16" = 1'-0"



Rear Elevation

Scale: 3/16" = 1'-0"

Amended Special Use Permit Application

Sheet 4 of 5 - Sections & Elevations