

BIO-RETENTION AREA MAINTENANCE REQUIREMENTS:
INSPECTION SHALL BE MADE WEEKLY BY A LICENSED PROFESSIONAL AND AFTER EVERY 1/2" RAINFALL EVENT BY THE OWNER OR CONTRACTOR DURING CONSTRUCTION. DURING THE FIRST GROWING SEASON INSPECTIONS SHALL BE CONDUCTED MONTHLY AND BI-ANNUALLY THEREAFTER. THE FOLLOWING TASKS SHALL BE PERFORMED AS NEEDED:

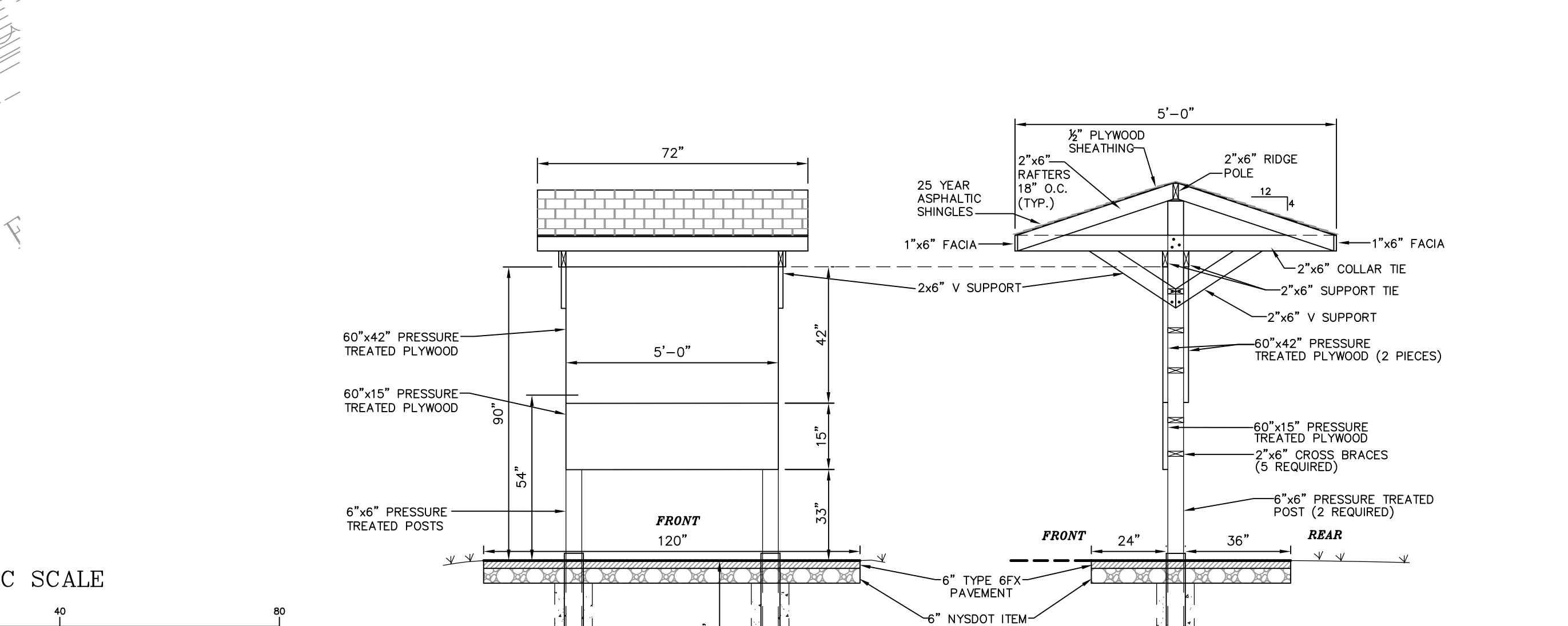
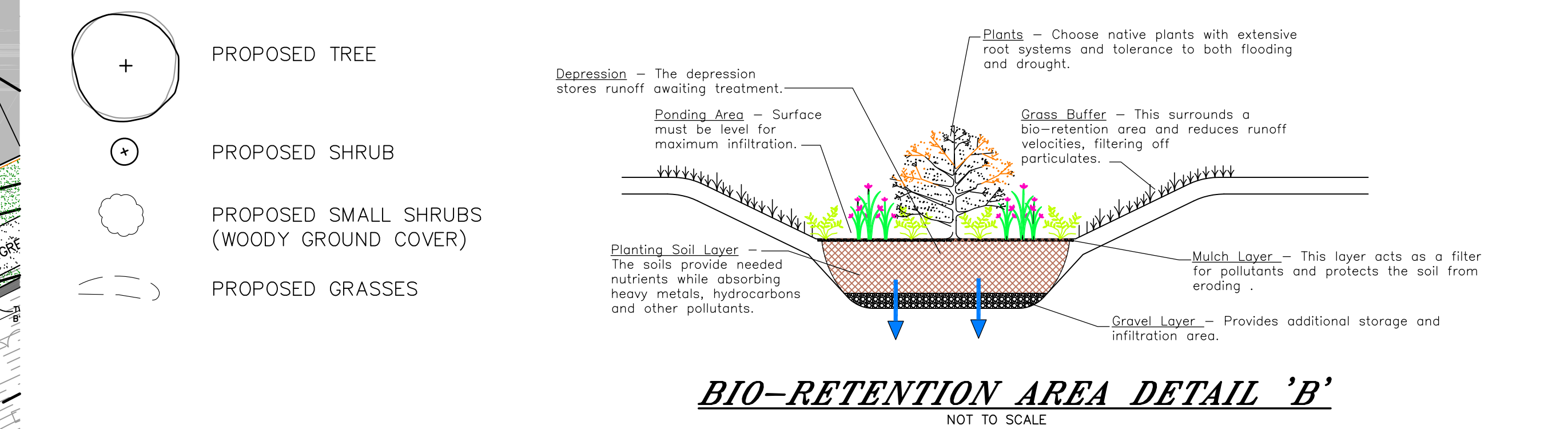
1. REMOVAL OF ACCUMULATED SEDIMENT AND CLEANING AND/OR RESTORATION OF THE FILTER BED AREAS WHENEVER ACCUMULATED SEDIMENT REACHES A DEPTH OF 1 INCH.
2. RESTORATION OF ANY DISTURBED PLANT MATERIAL, AND ANY ERODED EMBANKMENTS. REPLACEMENT OF PROPOSED PLANTS SHALL OCCUR IF MORE THAN 50% OF THE COVERAGE OF THE FACILITY IS NOT ACHIEVED.
3. REMOVAL OF ACCUMULATED DEBRIS WITHIN THE FILTER BED AREAS AND AT ALL INLET AND OUTLET STRUCTURES.
4. ANNUAL MOWING (EARLY WINTER) OF THE BASINS. TRIMMING AND PRUNING OF BUSHES. REMOVAL OF ANY FALLEN TREES OR LIMBS.
5. WHEN THE FILTERING CAPACITY OF THE FILTER DIMINISHES SUBSTANTIALLY (I.E. WHEN WATER POUNDS ON THE SURFACE OF THE FILTER BED FOR MORE THAN 48 HOURS), THE TOP FEW INCHES OF DISCOLORED MATERIAL SHALL BE REMOVED AND SHALL BE REPLACED WITH FRESH MATERIAL. THE REMOVED SEDIMENTS SHALL BE DISPOSED IN AN ACCEPTABLE MANNER (I.E. LANDFILL).
6. REFER TO LANDSCAPING PLANS FOR PLANTING REQUIREMENTS. FOR ANY REASON A CONFLICT OF PLANT MATERIAL OR PLANT MAINTENANCE SHOULD OCCUR, THE LANDSCAPE PLANS ARE TO TAKE PRECEDENCE.

NOTE:
THE PLANTING SOIL SHOULD BE A SANDY LOAM, LOAMY SAND, LOAM (USDA), OR A LOAM/SAND MIX (SHOULD CONTAIN A MINIMUM 35 TO 60% SAND, BY VOLUME). THE CLAY CONTENT FOR THESE SOILS SHOULD BE LESS THAN 20% BY VOLUME. SOILS SHOULD FALL WITHIN THE SM, OR ML CLASSIFICATIONS OF THE UNIFIED SOIL CLASSIFICATION SYSTEM (USCS). A PERMEABILITY OF AT LEAST 1.0 FEET PER DAY (0.5"/HR) IS REQUIRED (A CONSERVATIVE VALUE OF 0.5 FEET PER DAY IS USED FOR DESIGN). THE SOIL SHOULD BE FREE OF STONES, STUMPS, ROOTS, OR OTHER WOODY MATERIAL OVER 1" IN DIAMETER. BRUSH OR SEEDS FROM NOXIOUS WEEDS PLACEMENT OF THE PLANTING SOIL SHOULD BE IN LIFTS OF 12 TO 18" LOOSELY COMPACTED (TAMPED LIGHTLY WITH A DOZER OR BACKHOE BUCKET).

BIO-RETENTION AREA DETAIL 'A'
NOT TO SCALE

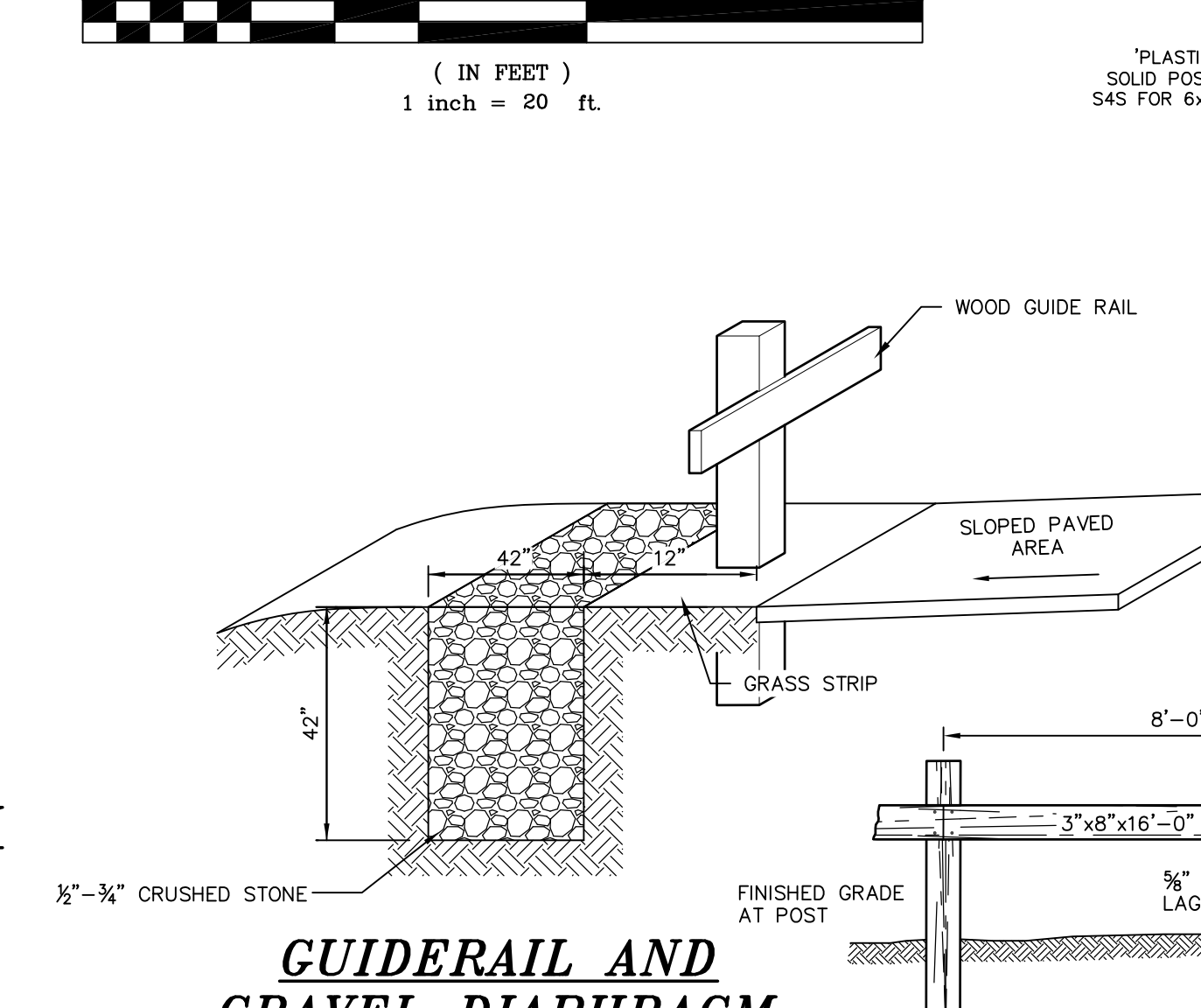
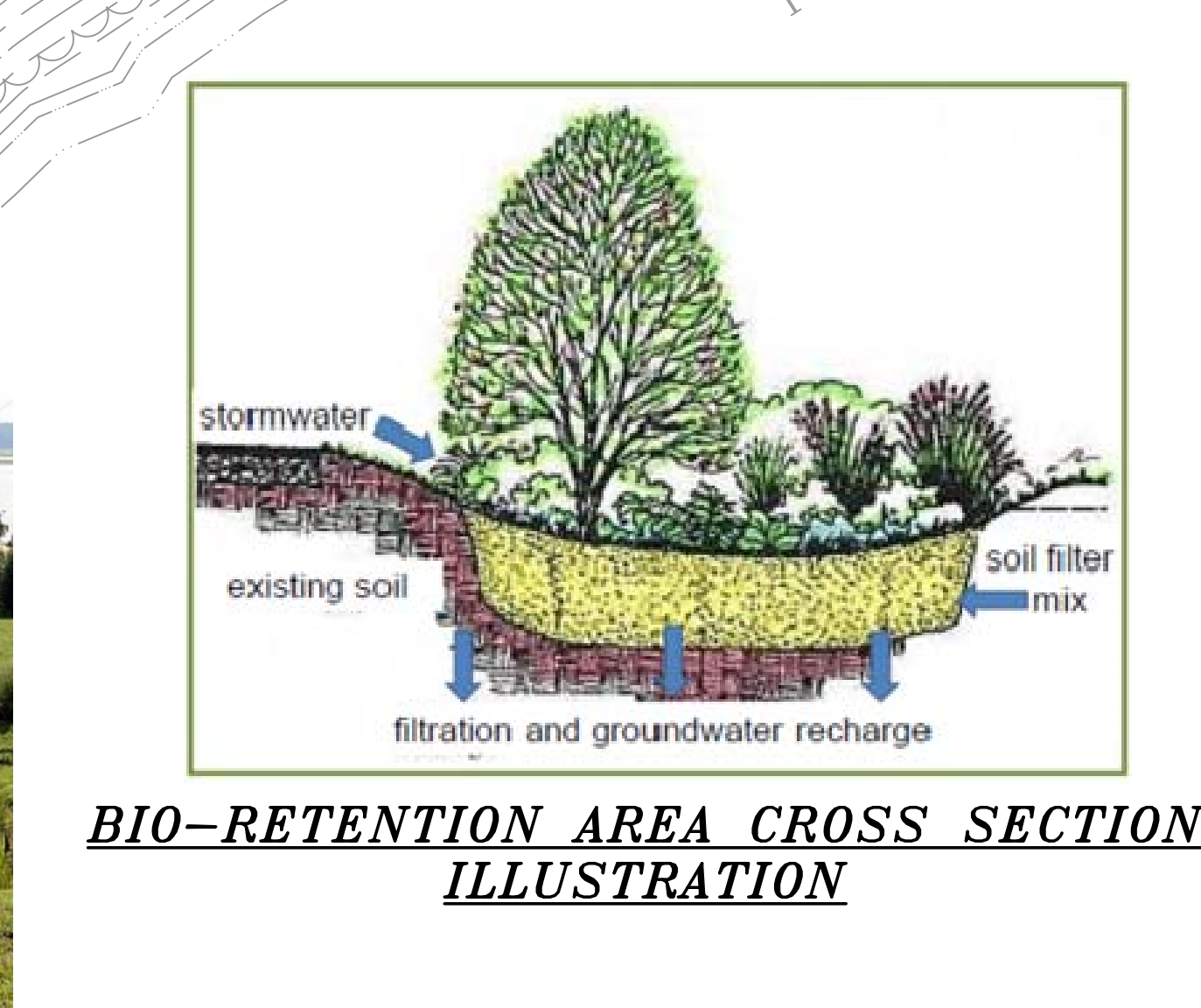
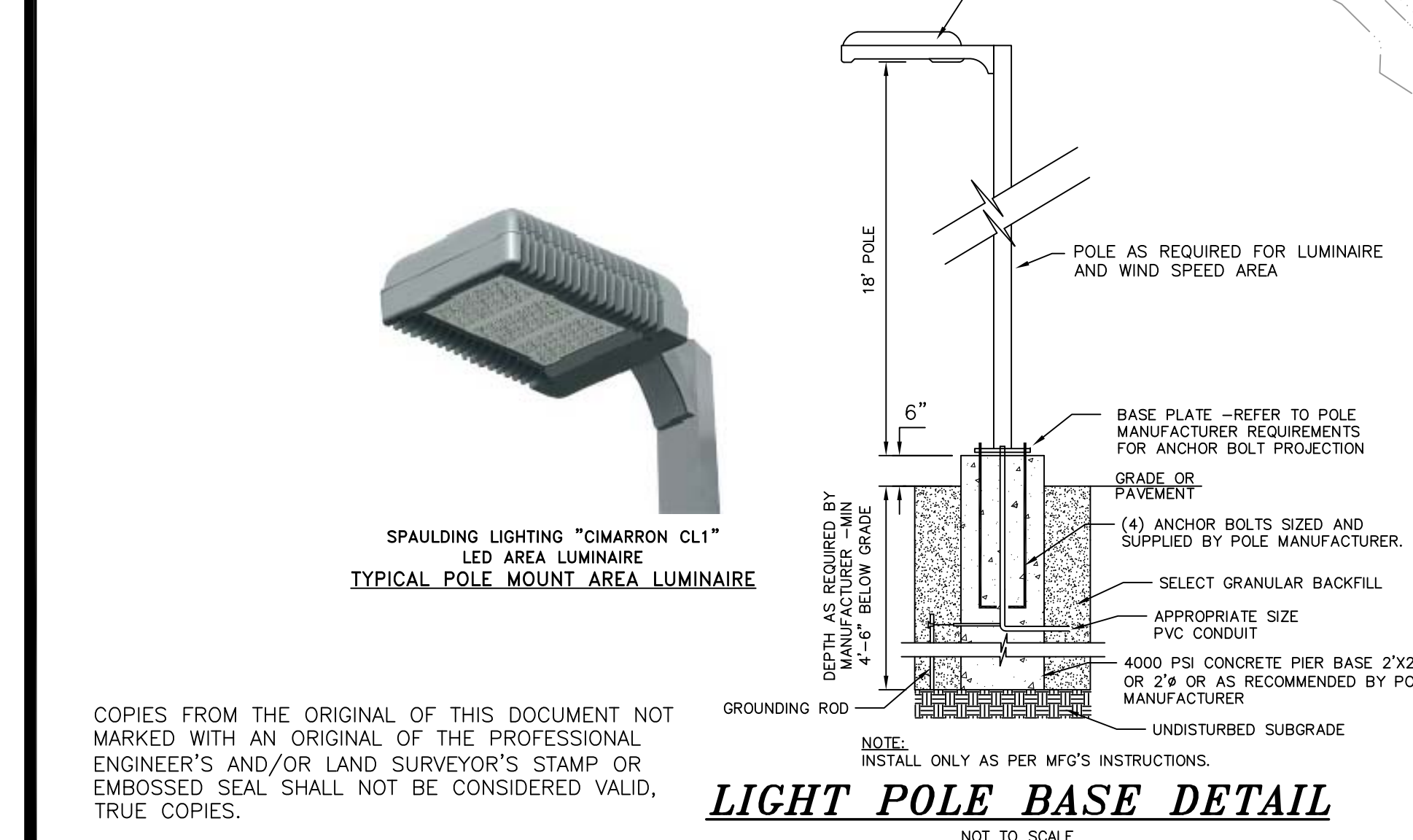
LANDSCAPING LEGEND

- PROPOSED TREE
- PROPOSED SHRUB
- PROPOSED SMALL SHRUBS (WOODY GROUND COVER)
- PROPOSED GRASSES



GRAPHIC SCALE
1 inch = 20 ft.

NOTES:
1. AREA OF PARKING LOT FACILITY: 0.771± AC.
2. AREA OF GREENWAY TRAIL AND POCKET PARK: 0.636± AC.



LANC & TULLY
ENGINEERING AND SURVEYING, P.C.

P.O. Box 687, Rt. 207
Goshen, N.Y. 10924
(845) 294-8700

CONCEPT PLAN
PREPARED FOR
**CHURCHILL PARKING LOT,
GREENWAY TRAIL
AND POCKET PARK**
CITY OF BEACON
DUTCHESS COUNTY, NEW YORK

NOTES:
1. AREA OF PARKING LOT FACILITY: 0.771± AC.
2. AREA OF GREENWAY TRAIL AND POCKET PARK: 0.636± AC.

DATE: JULY 22, 2015
REVISIONS: JULY 22, 2016
MAY 3, 2017

CAD FILE: 140726-PARK CONCEPT PLAN.DWG
DATE: 6/22/20
SHEET NO.: 1 OF 2
DRAWING NO.: A-13-4278-01