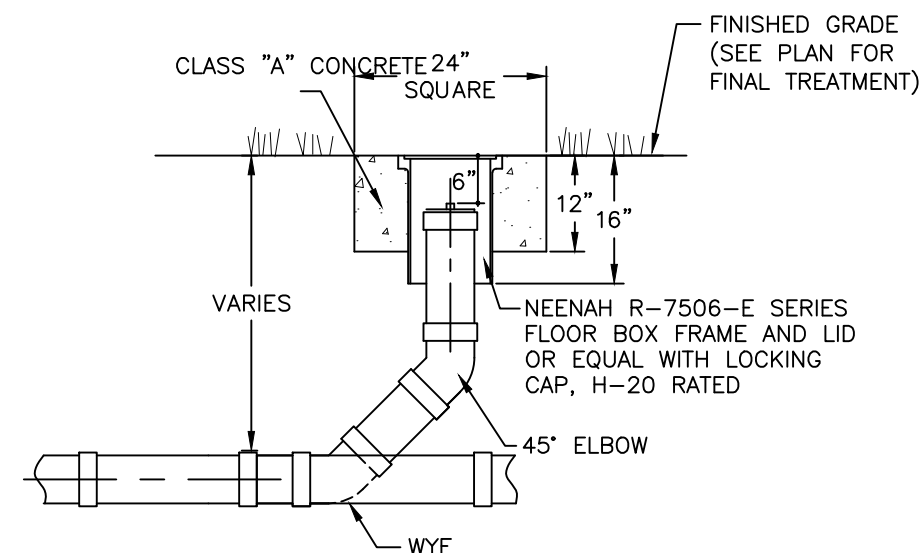
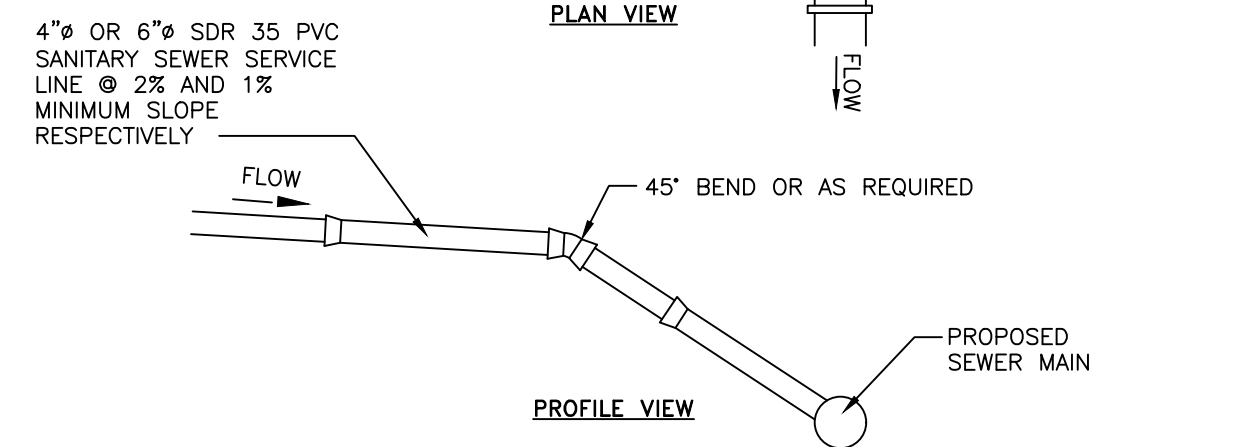


**NOTES:**  
 1. EXCAVATION AND TRENCHING SHALL MEET ALL OSHA REQUIREMENTS.  
 2. SUITABLE RUN OF TRENCH SHALL NOT INCLUDE FROZEN MATERIALS, DEBRIS, ORGANIC MATERIALS, LARGE STONES OR OTHER UNSUITABLE MATERIALS. IF THE RUN OF TRENCH MATERIAL IS FOUND TO BE UNSUITABLE, A SUITABLE BACKFILL MATERIAL SHALL BE IMPORTED AND USED.

**SANITARY SEWER SERVICE LINE TRENCH DETAIL**  
NOT TO SCALE

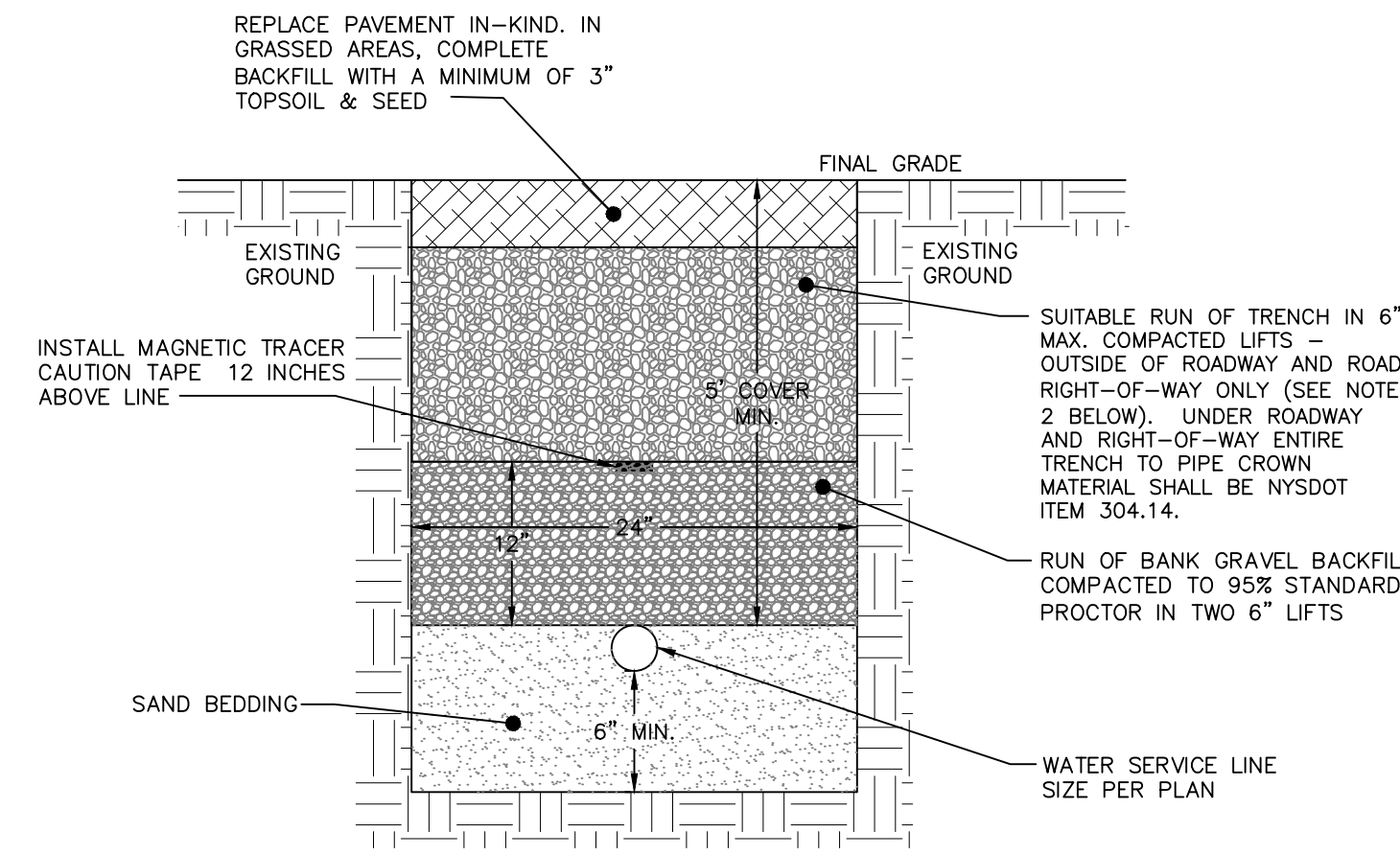


**CLEANOUT DETAIL**  
NOT TO SCALE



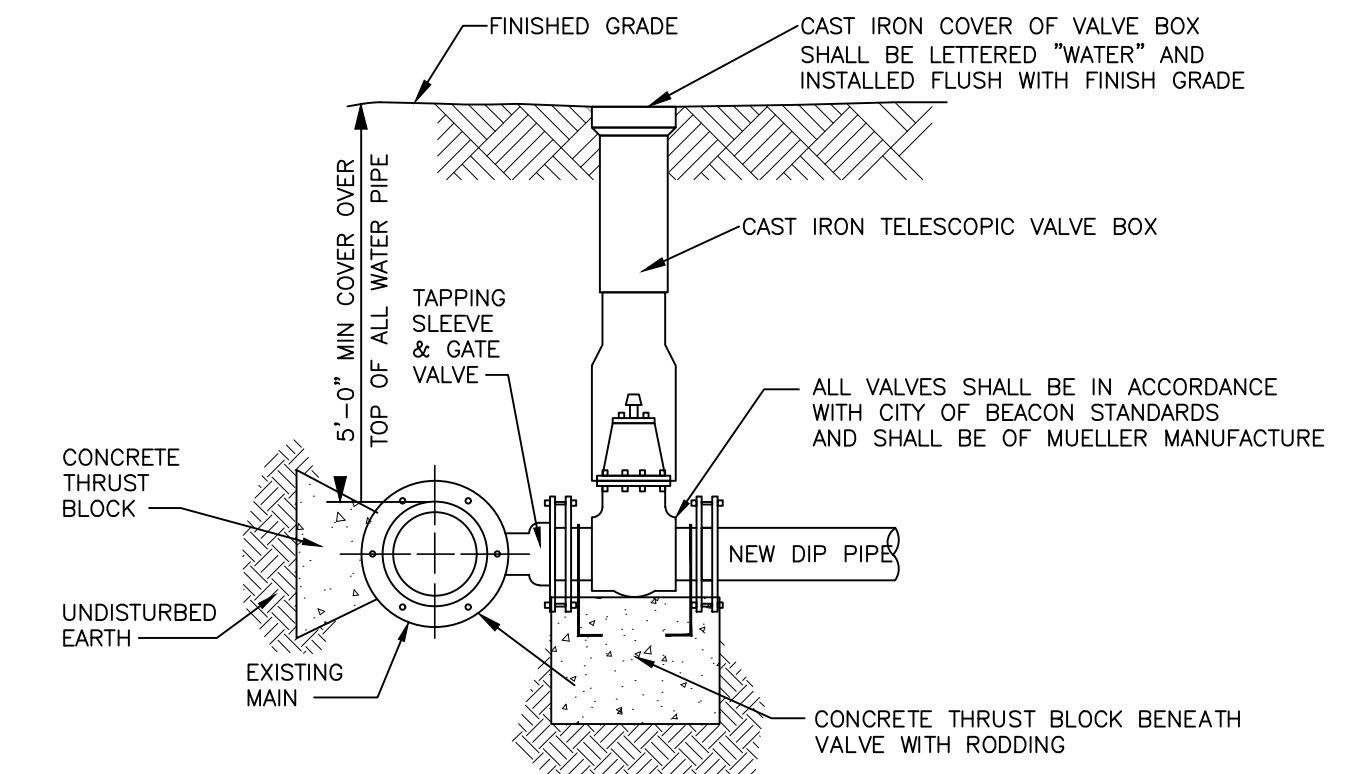
**NOTES:**  
 1. EXCAVATION AND TRENCHING SHALL MEET ALL OSHA REQUIREMENTS.  
 2. SUITABLE RUN OF TRENCH SHALL NOT INCLUDE FROZEN MATERIALS, DEBRIS, ORGANIC MATERIALS, LARGE STONES OR OTHER UNSUITABLE MATERIALS. IF THE RUN OF TRENCH MATERIAL IS FOUND TO BE UNSUITABLE, A SUITABLE BACKFILL MATERIAL SHALL BE IMPORTED AND USED.

**SANITARY SEWER SERVICE CONNECTION DETAIL**  
NOT TO SCALE



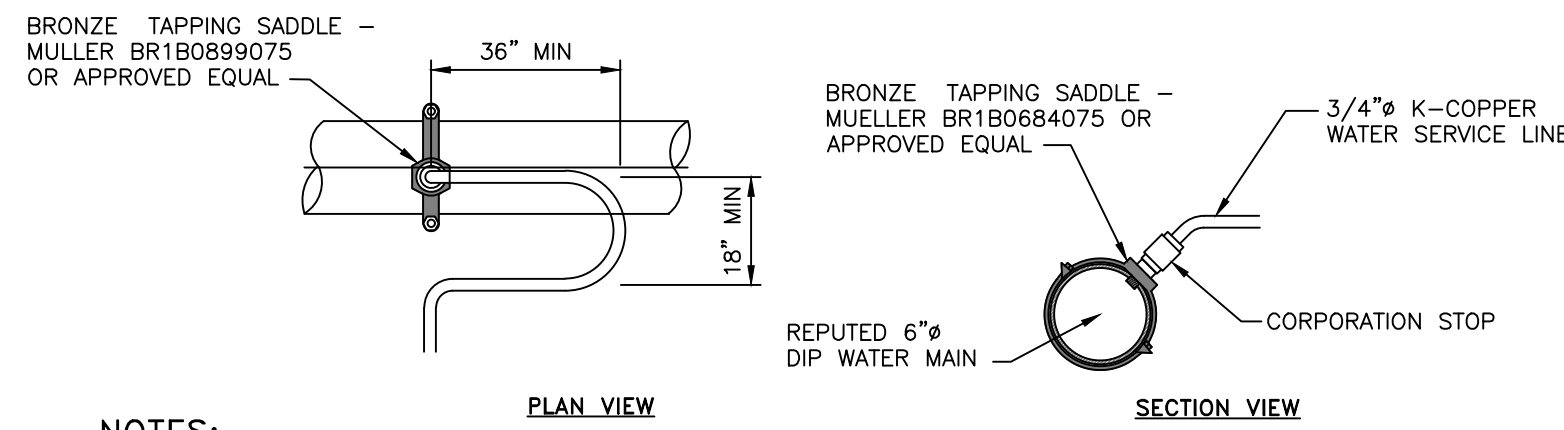
**NOTES:**  
 1. EXCAVATION AND TRENCHING SHALL MEET ALL OSHA REQUIREMENTS.  
 2. SUITABLE RUN OF TRENCH SHALL NOT INCLUDE FROZEN MATERIALS, DEBRIS, ORGANIC MATERIALS, ENLARGED PARTICLES, LARGE STONES OR OTHER UNSUITABLE MATERIALS. IF THE RUN OF TRENCH MATERIAL IS FOUND TO BE UNSUITABLE, A SUITABLE BACKFILL MATERIAL SHALL BE IMPORTED AND USED.  
 3. IN AREAS WHERE 5' COVER REQUIREMENT CANNOT BE MET, THE CONTRACTOR SHALL PROVIDE PIPE INSULATION TO PREVENT FREEZING.

**WATER SERVICE LINE TRENCH DETAIL**  
NOT TO SCALE



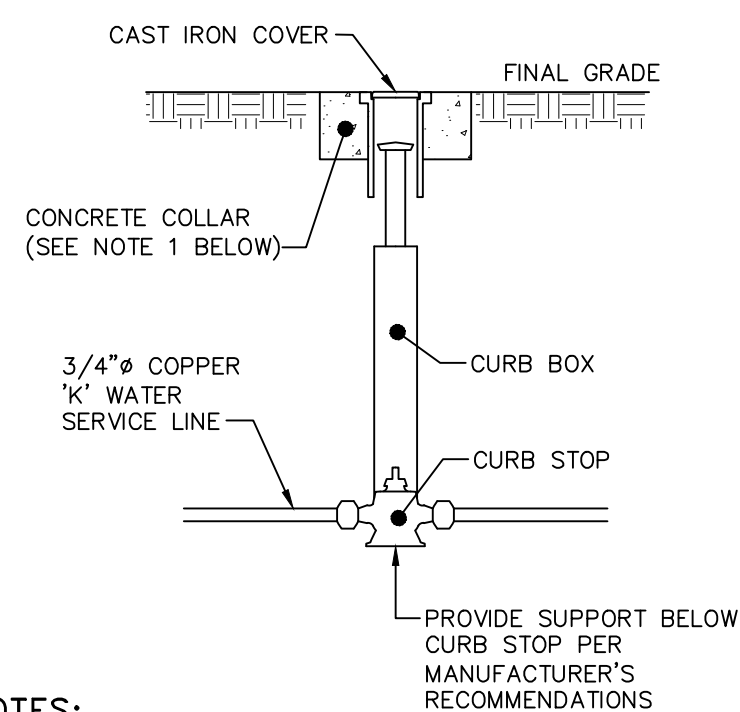
**NOTES:**  
 1. TAPPING SLEEVE SHALL BE USED IF THE SECTION OF WATER MAIN IN THE VICINITY OF THE CONNECTION CANNOT BE SHUT DOWN AND ISOLATED.  
 2. ALL VALVES SHALL OPEN BY TURNING LEFT (COUNTERCLOCKWISE) AND HAVE A 2-INCH SQUARE-OPERATING NUT PAINTED RED.  
 3. ALL VALVES SHALL BE M.J. RESILIENT WEDGE TYPE WITH 'O' RING PACKING, DESIGNED FOR A WORKING PRESSURE OF 150 PSI AND BE IN FULL CONFORMANCE WITH AWWA C500.  
 4. TAPPING SLEEVE AND GATE VALVE SHOWN ARE MUELLER H-615, AND T-2630 RESPECTIVELY.

**TAPPING SLEEVE DETAIL**  
NOT TO SCALE



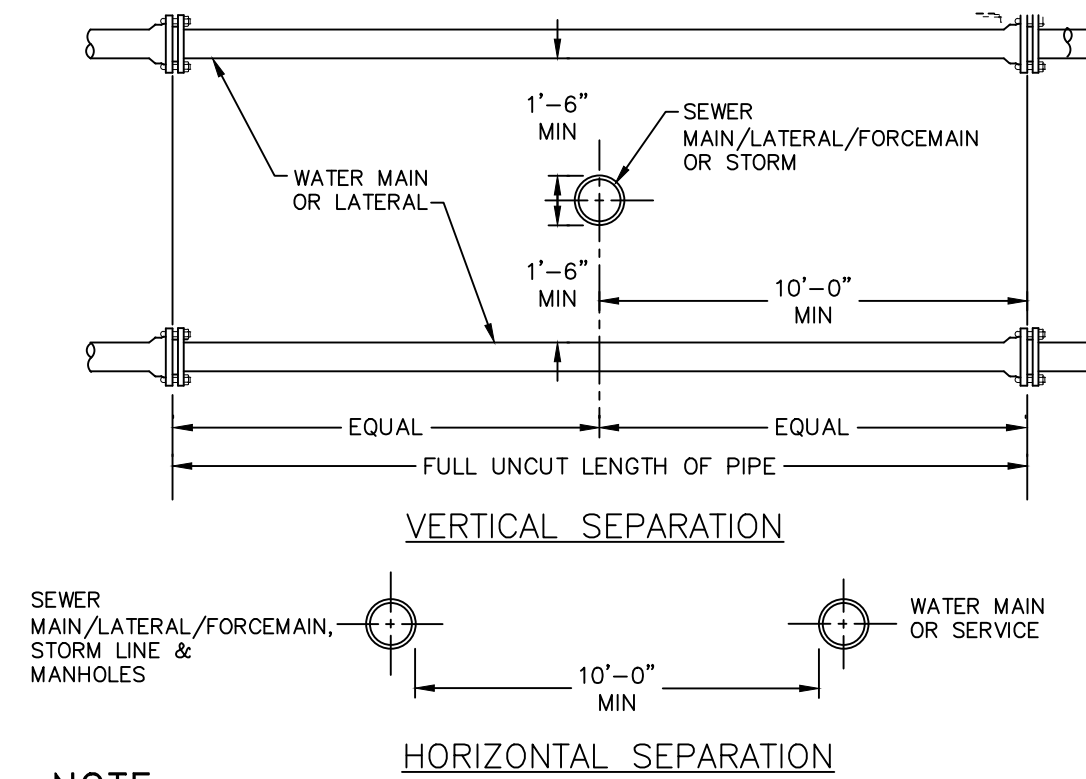
**NOTES:**  
 1. A MINIMUM 5' COVER SHALL BE PROVIDED ON THE WATER SERVICE LINE (CONDITIONED ON ACTUAL 5' MIN. WATER MAIN DEPTH).  
 2. CORPORATION STOP TO BE COMPRESSION TYPE BY MUELLER.  
 3. WATER SERVICE LINE TO HAVE A 'GOOSENECK' NEAR CORPORATION STOP.  
 4. CORPORATION STOP TO BE INSTALLED IN THE UPPER HALF OF THE WATER MAIN AT AN ANGLE OF APPROXIMATELY 45° FROM HORIZONTAL.  
 5. THE CONTRACTOR SHALL INSTALL A FULL BODIED STAINLESS STEEL TAPPING SLEEVE AT THE PROPOSED WATER SERVICE LOCATION.

**WATER SERVICE CONNECTION DETAIL**  
NOT TO SCALE



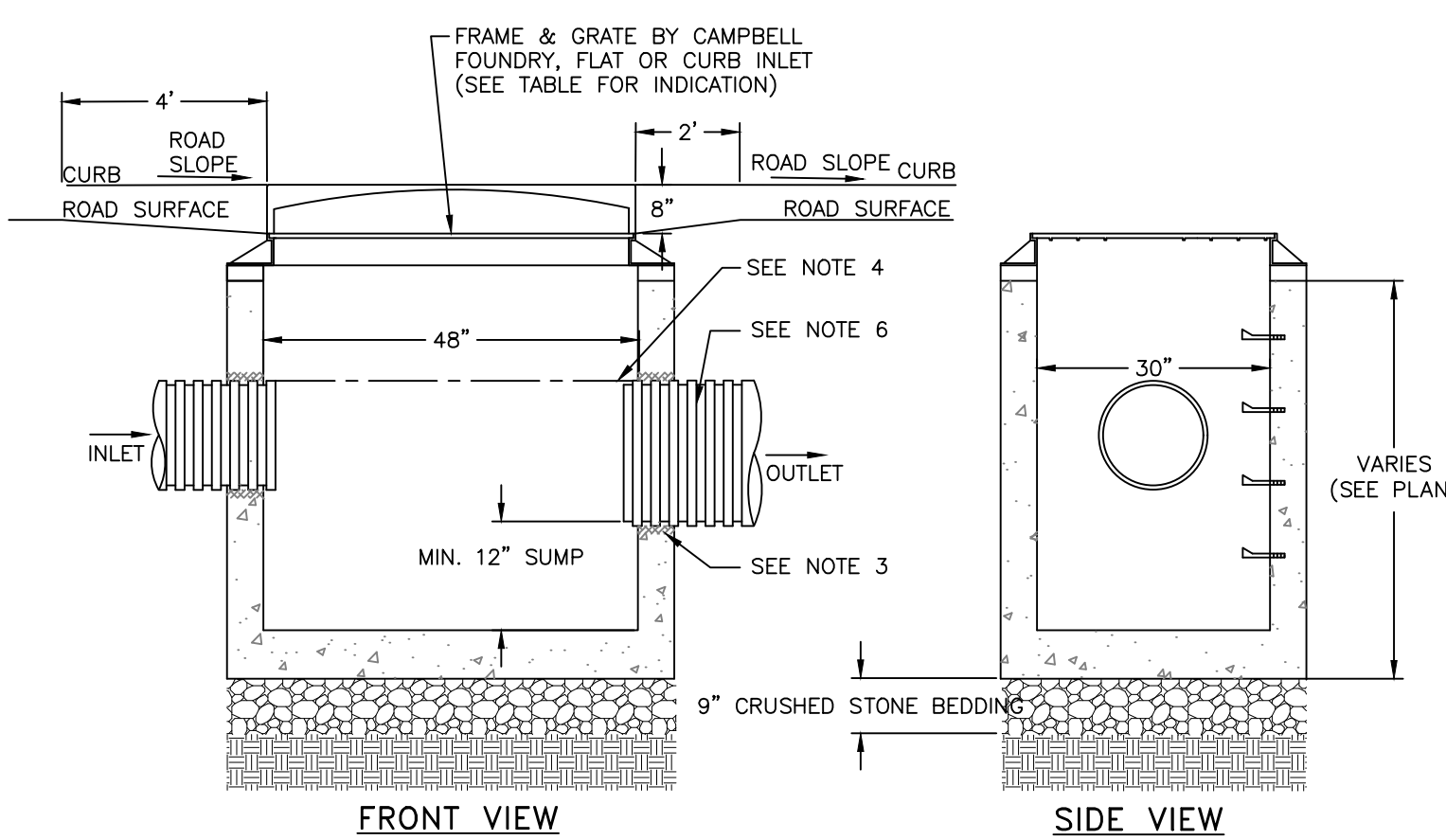
**NOTES:**  
 1. CONCRETE COLLAR TO BE PROVIDED IN AREAS THAT ARE NOT PAVED. THE COLLAR SHALL BE 6" FROM THE COVER AND SHALL EXTEND 6" BELOW FINAL GRADE.  
 2. CURB STOP TO BE COMPRESSION TYPE BY MUELLER.  
 3. AREA AROUND CURB BOX TO BE BACKFILLED WITH GRAVELLY MATERIAL.

**WATER SHUT-OFF VALVE DETAIL**  
NOT TO SCALE



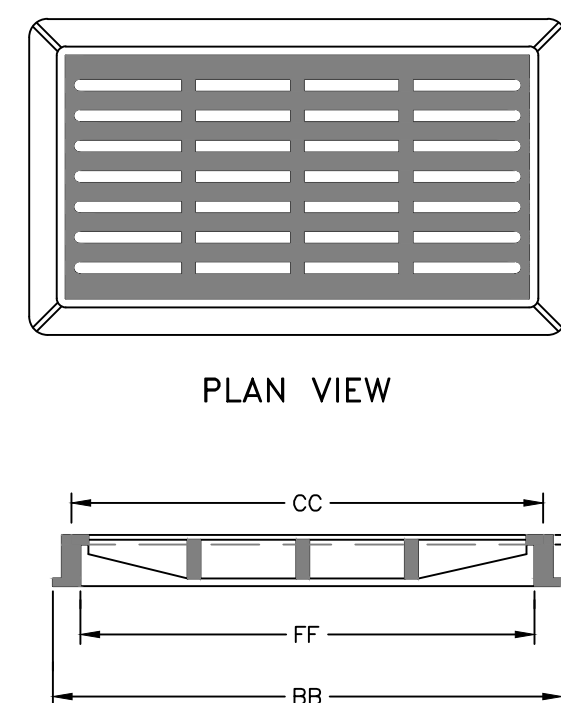
**NOTE:**  
 1. NO DEVIATION IN THE SEPARATION REQUIREMENTS WILL BE PERMITTED WITHOUT THE EXPRESS APPROVAL OF THE DUTCHESS COUNTY DEPARTMENT OF HEALTH AND THE CITY OF BEACON. CONCRETE ENCASEMENT OF WATERLINE OR OFFSETTING OF WATERLINE SHALL BE REQUIRED WHERE SEPARATION DISTANCES CANNOT BE MAINTAINED.

**WATER LINE SEPARATION DETAIL**  
NOT TO SCALE



**NOTES:**  
 1. PRECAST CONCRETE CATCH BASIN WITH CONCRETE STRENGTH OF 4,000 PSI @ 28 DAYS.  
 2. THE ENDS OF ALL PIPES SHALL BE CUT OFF FLUSH WITH THE INSIDE SURFACE OF THE CATCH BASIN AND PARGED AROUND.  
 3. PIPES SHALL BE PARGED AROUND INTERIOR AND EXTERIOR PRIOR TO BACKFILLING OF STRUCTURE. CONNECTIONS MADE WITHIN 10 FEET OF A WATER MAIN (OR SERVICE LINE) OR A SEWER MAIN (OR SERVICE LATERAL) SHALL BE MADE WATERTIGHT.  
 4. PROVIDE A MINIMUM 0.1' DROP BETWEEN INLET AND OUTLET INVERTS (MATCH CROWNS FOR PIPES WITH DIFFERENT SIZE) UNLESS OTHERWISE NOTED ON THE PLAN.  
 5. CATCH BASINS WITH AN INTERIOR DEPTH OF 4' AND GREATER SHALL BE FURNISHED WITH STEEL REINFORCED POLYPROPYLENE PLASTIC STEPS AT 12" INTERVALS.  
 6. HDPE PIPE SHALL BE PROVIDED WITH WATERTIGHT CONNECTIONS. ADS MODEL N12 WT IB OR APPROVED EQUAL.

**CATCH BASIN DETAIL**  
NOT TO SCALE

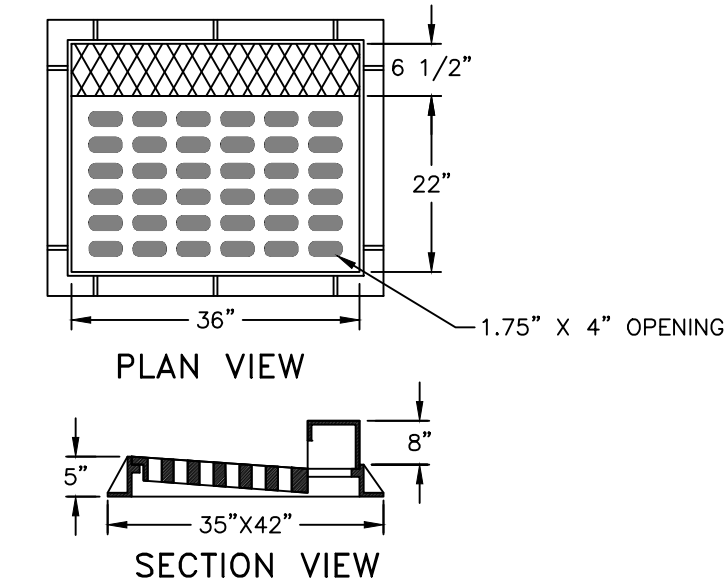


DIMENSION TABLE:

B	C	E	F	X	BB	CC	FF
30"	24"	4"	22"	1"	14"	36"	34"

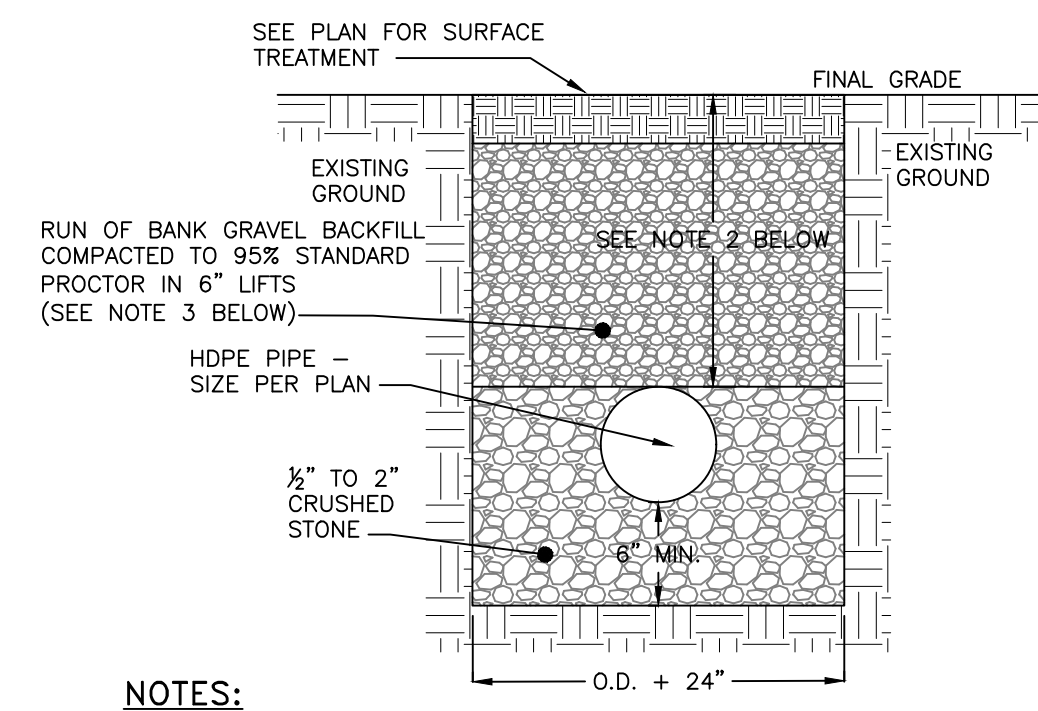
**NOTES:**  
 1. HEAVY DUTY RECTANGULAR STORMWATER INLET GRATE TO BE CAMPBELL FOUNDRY MODEL 3433, OR APPROVED EQUAL.  
 2. CB 1 SHALL RECEIVE A FLAT INLET. CATCH BASINS 2 & 3 RECEIVE CURB INLETS (RE-USE EXISTING CURB INLET ON CB 3)

**CAST IRON STORMWATER FLAT INLET GRADE DETAIL**  
NOT TO SCALE



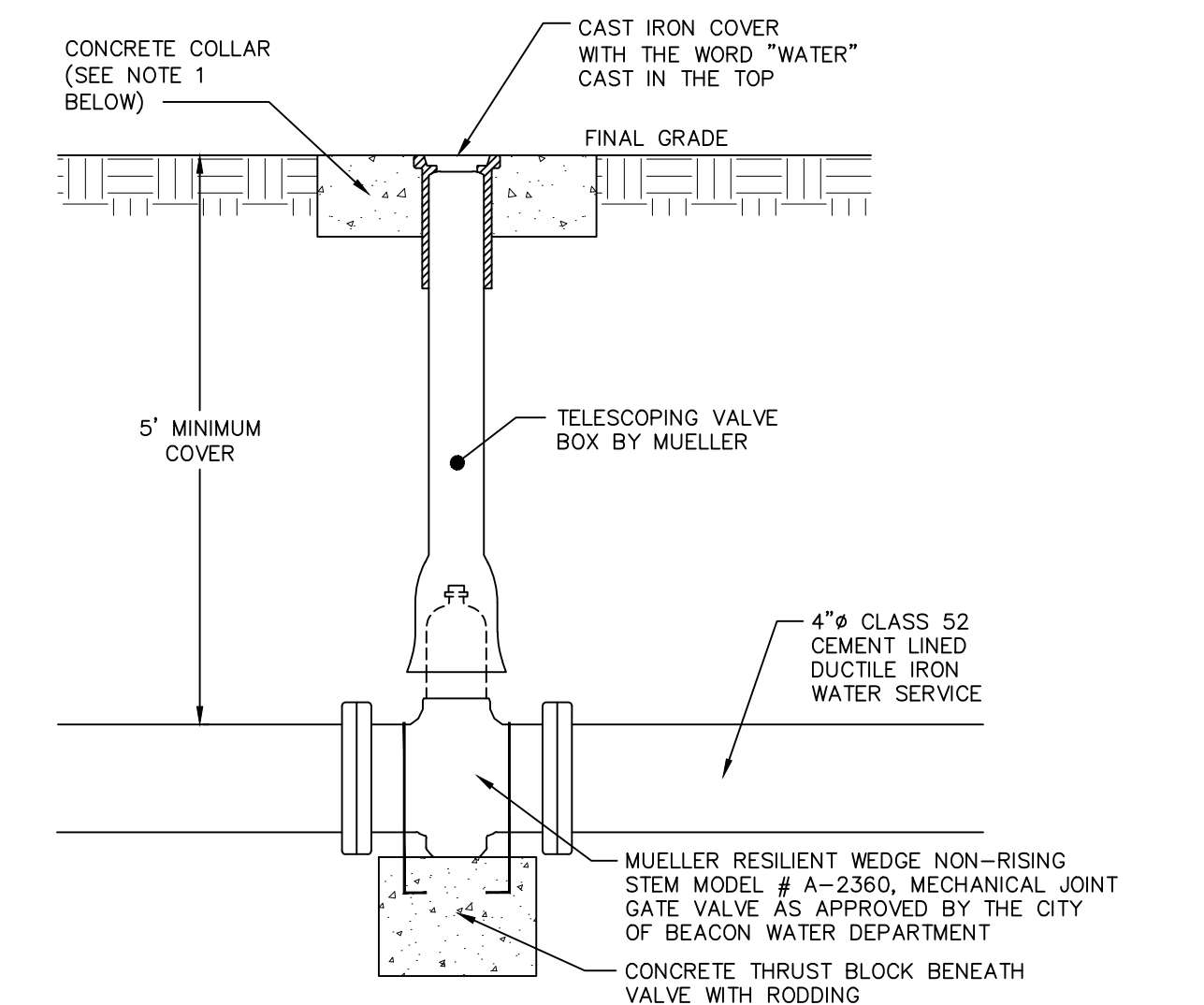
**NOTES:**  
 1. HEAVY DUTY RECTANGULAR STORMWATER INLET GRATE TO BE CAMPBELL FOUNDRY MODEL 2541, OR APPROVED EQUAL.  
 2. CATCH BASINS TO RECEIVE CURB INLETS ARE CB 2 AND CB 3 WITHIN SOUTH STREET.

**CAST IRON STORMWATER CURB INLET GRADE DETAIL**  
NOT TO SCALE



**NOTES:**  
 1. EXCAVATION AND TRENCHING SHALL MEET ALL OSHA REQUIREMENTS.  
 2. MINIMUM COVER SHALL BE 18 INCHES WITHIN THE SOUTH STREET RIGHT-OF-WAY.  
 3. BACKFILL WITHIN THE RIGHT-OF-WAY SHALL BE NYS DOT ITEM 304.14 SUBBASE COURSE TYPE 2 FROM THE TOP OF THE PIPE TO THE BOTTOM OF THE PAVEMENT OR GRASS, PLACED IN 8" MAXIMUM LIFTS AND COMPACTED TO 95% STANDARD PROCTOR.

**STORMWATER PIPE IN TRENCH DETAIL**  
NOT TO SCALE



**NOTES:**  
 1. CONCRETE COLLAR TO BE PROVIDED IN AREAS THAT ARE NOT PAVED. THE COLLAR SHALL BE 6" FROM THE COVER AND SHALL EXTEND 6" BELOW FINAL GRADE.

**GATE VALVE DETAIL**  
NOT TO SCALE

DRAWN BY: CMB				CHECKED BY: MAB			
REVISIONS:							
NO.	DATE	DESCRIPTION	BY	NO.	DATE	DESCRIPTION	BY



**HUDSON LAND DESIGN**  
 PROFESSIONAL ENGINEERING P.C.  
 174 MAIN ST., BEACON, NEW YORK 12508  
 13 CHAMBERS ST., NEWBURGH, NEW YORK 12550  
 PH: 845-440-6926  
 F: 845-440-6637

**CONSTRUCTION DETAILS**  
 416 MAIN STREET  
 416-420 MAIN STREET  
 CITY OF BEACON  
 DUTCHESS COUNTY, NEW YORK  
 TAX ID: 6054-20-056780 & 056774

JOB #: 2020-005  
 DATE: 4/28/2020  
 SCALE: NTS  
 TITLE: CD-2  
 SHEET: 10 OF 10