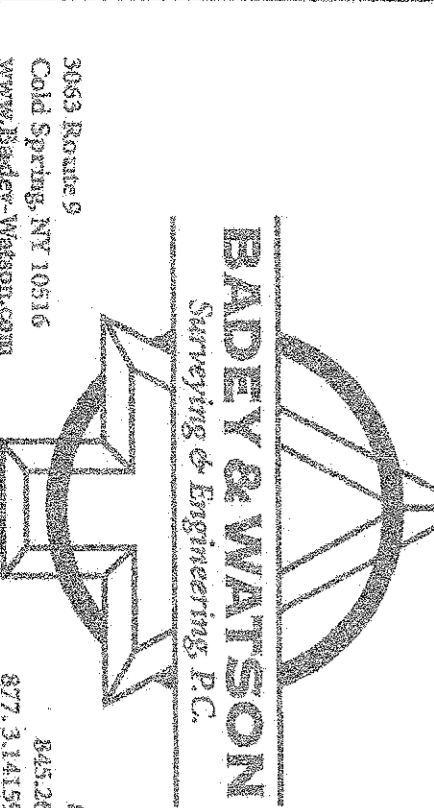
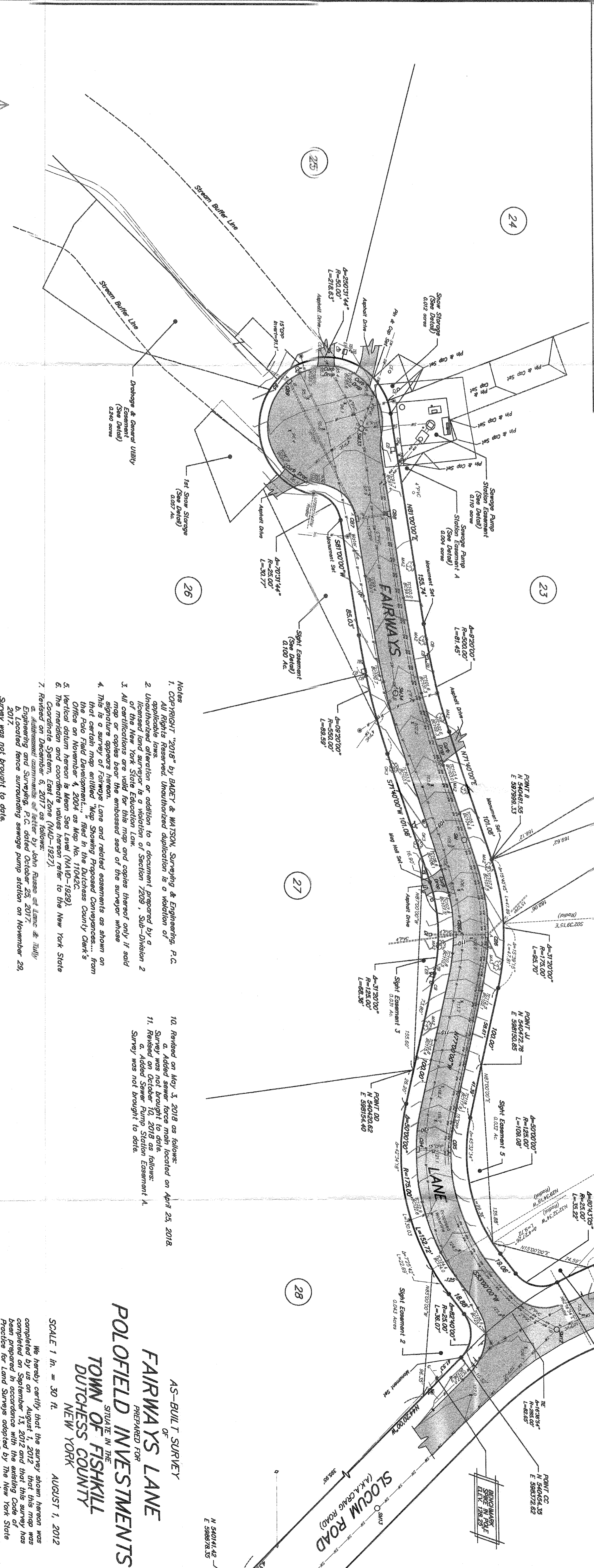
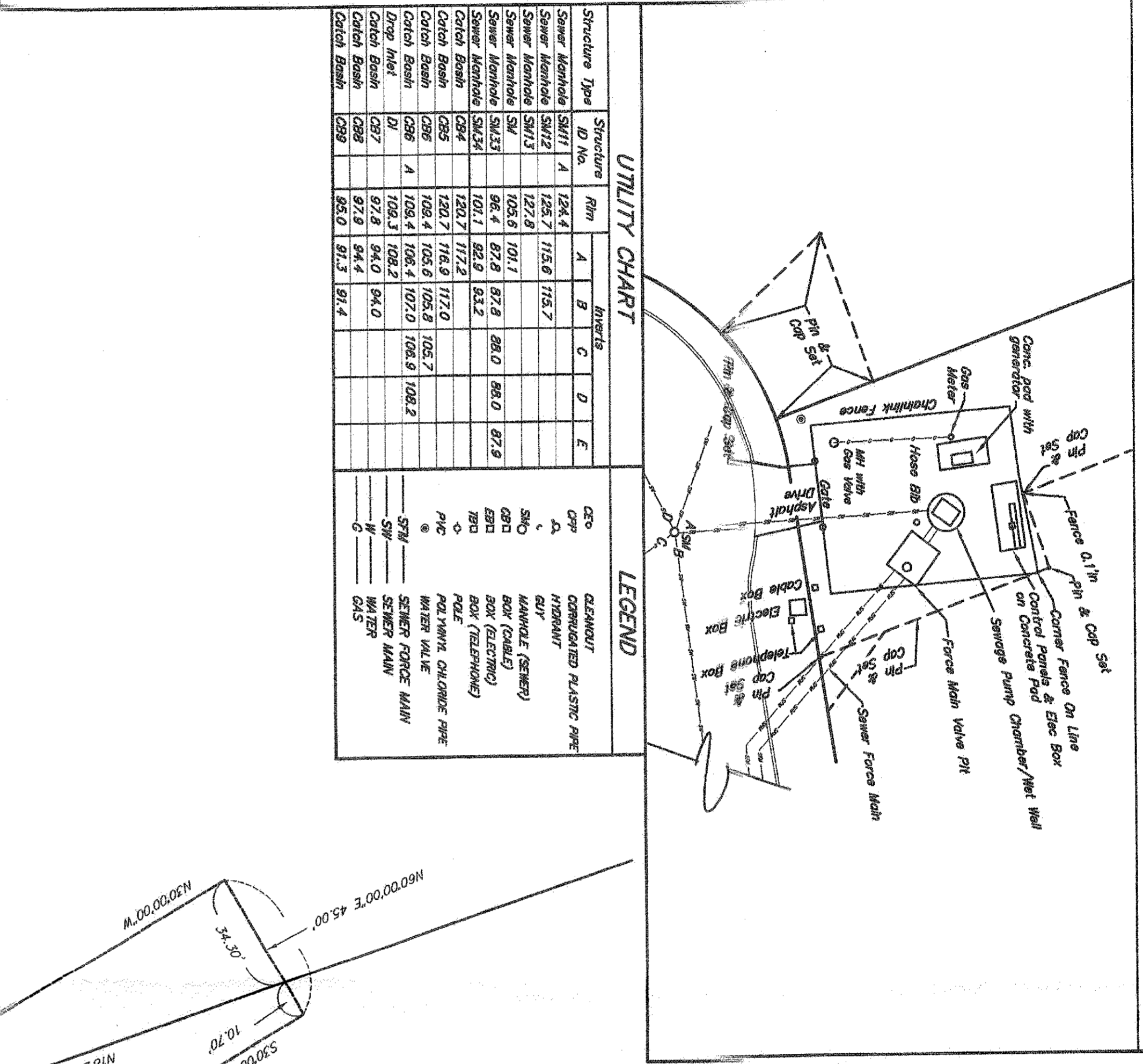


CHIEF PARTIAL CHART

STATION	DEPT. (1)	DEPT. (2)	DEPT. (3)	DEPT. (4)	DEPT. (5)	DEPT. (6)	DEPT. (7)	DEPT. (8)	DEPT. (9)	DEPT. (10)
1	53°31'44"	50.00'	11.00'	28.00'	11.00'	11.00'	11.00'	11.00'	11.00'	11.00'
2	53°31'44"	50.00'	11.00'	28.00'	11.00'	11.00'	11.00'	11.00'	11.00'	11.00'
3	53°31'44"	50.00'	11.00'	28.00'	11.00'	11.00'	11.00'	11.00'	11.00'	11.00'
4	53°31'44"	50.00'	11.00'	28.00'	11.00'	11.00'	11.00'	11.00'	11.00'	11.00'
5	53°31'44"	50.00'	11.00'	28.00'	11.00'	11.00'	11.00'	11.00'	11.00'	11.00'
6	53°31'44"	50.00'	11.00'	28.00'	11.00'	11.00'	11.00'	11.00'	11.00'	11.00'
7	53°31'44"	50.00'	11.00'	28.00'	11.00'	11.00'	11.00'	11.00'	11.00'	11.00'
8	53°31'44"	50.00'	11.00'	28.00'	11.00'	11.00'	11.00'	11.00'	11.00'	11.00'
9	53°31'44"	50.00'	11.00'	28.00'	11.00'	11.00'	11.00'	11.00'	11.00'	11.00'
10	53°31'44"	50.00'	11.00'	28.00'	11.00'	11.00'	11.00'	11.00'	11.00'	11.00'



BADEY & WATSON
Surveying & Engineering, P.C.
445 West 101st Street
Great Neck, NY 11040
Tel: 516.466.0317
Fax: 516.466.0318
www.badey-watson.com

- Notes
1. COPYRIGHT "2018" BY BADEY & WATSON, Surveying & Engineering, P.C. All Rights Reserved. Unauthorized duplication is a violation of applicable laws.
 2. Unlicensed land surveyor is a violation of Section 2209, Sub-Division 2 of the New York State Education Law and applies thereto only if said signature appears hereon.
 3. This is a survey of Fairways Lane and related easements as shown on that certain map entitled "Map Showing Proposed Conveyances... from the Pole Field Development..." filed in the Dutchess County Clerk's Office on November 4, 2004 as Map No. 11042C.
 4. The meridian and coordinate values hereon refer to the New York State Coordinate System, East Zone (NAD-1983).
 5. Revised on December 6, 2017 as follows:
a. Addition of Sewage Pump Station Easement A, B, C, D, E, F, G, H, I, J, K, L, M, N, O, P, Q, R, S, T, U, V, W, X, Y, Z.
b. Addition of Sewage Pump Station Easement A, B, C, D, E, F, G, H, I, J, K, L, M, N, O, P, Q, R, S, T, U, V, W, X, Y, Z.
 6. Revised on December 14, 2017 as follows:
a. Corrected location of force surrounding sewage pump station.
 7. Revised on March 28, 2018 as follows:
a. Added pipe sizes and materials located on October 23, 2008.
b. Added the Sewer Pump Easement A, and
c. added the water lines which were located on March 7, 2018 and
d. Survey was not brought to date.
 8. Revised on May 3, 2018 as follows:
a. Added sewer force main located on April 23, 2018.
b. Revised on October 10, 2018 as follows:
c. Added Sewer Pump Station Easement A.
d. Survey was not brought to date.
 9. Revised on October 23, 2018 as follows:
a. Added Sewer Pump Station Easement A.
b. Survey was not brought to date.

AS-BUILT SURVEY
OF
FAIRWAYS LANE
PREPARED FOR
POLOFIELD INVESTMENTS
SITUATE IN THE
TOWN OF FISHKILL
DUTCHESS COUNTY
NEW YORK
AUGUST 1, 2012

SCALE 1 in. = 30 ft.

We hereby certify that the survey shown hereon was completed by us on August 1, 2012 and that this map was completed on September 13, 2012 and that this survey has been prepared in accordance with the existing Code of Practice for Land Surveys adopted by the New York State Association of Professional Land Surveyors, Inc. on October 18, 2012. See Article 11.

BADEY & WATSON
Surveying & Engineering, P.C.
445 West 101st Street
Great Neck, NY 11040
Tel: 516.466.0317
Fax: 516.466.0318
www.badey-watson.com

BADEY & WATSON
Surveying & Engineering, P.C.
445 West 101st Street
Great Neck, NY 11040
Tel: 516.466.0317
Fax: 516.466.0318
www.badey-watson.com

PRINTED
001 10 2018

FILE No. 86-246