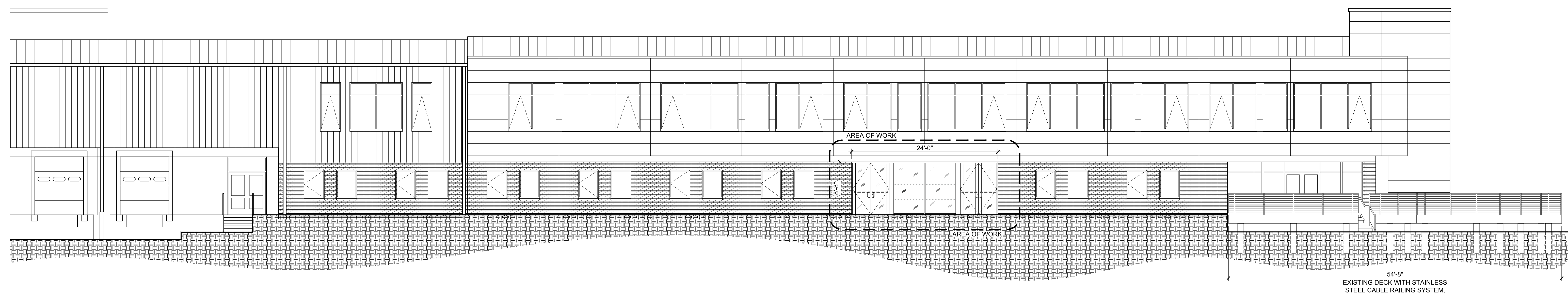


**Part Elevation at Proposed Deck**

Scale: 1/8" = 1'-0"



**Part Elevation at New Doors (Deck & Railing Omitted for Drawing Clarity)**

Scale: 1/8" = 1'-0"

REVISIONS:			
NO.	DATE	DESCRIPTION	BY
1	03/31/20	REVISED PER PLANNING BOARD COMMENTS	AJS

**Amendment To Site Plan Application**

Building Elevations - Sheet 4 of 4