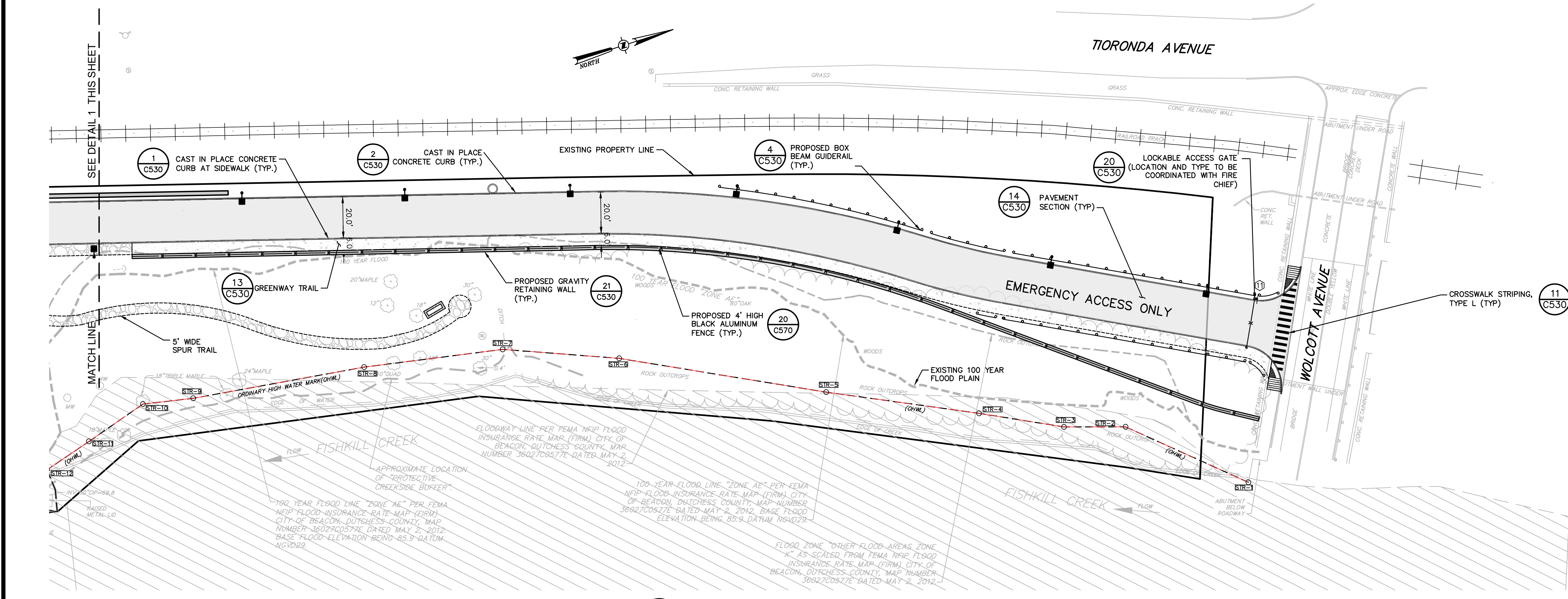


1 SITE PLAN
SCALE: 1"=30'

- LEGEND:**
- EXISTING 100-YEAR FLOOD PLAN
 - - - EXISTING PROPERTY LINE
 - - - EASEMENT LINE
 - ▭ PROPOSED BUILDING
 - ▭ (25) PROPOSED PAVEMENT
 - ▭ PROPOSED PARKING COURT
 - ▭ PROPOSED SIDE WALK
 - EXISTING METRO-NORTH RAILROAD TRACKS (ACTIVE)
 - EXISTING METRO-NORTH RAILROAD TRACKS (INACTIVE)
 - ▭ PROPOSED CURB
 - ▭ PROPOSED LIGHT POLE
 - ▭ PROPOSED RETAINING WALL
 - ▭ GREENWAY TRAIL

SITE PLAN NOTES:
 LAND BANKED PARKING SHALL BE CONSTRUCTED IF REQUIRED PER SECTION 223-26E OF CITY CODE.
 THE BEACON GREENWAY TRAIL COMMITTEE WILL BE ASKED TO REVIEW LAYOUT OF TRAIL PRIOR TO CONSTRUCTION.



2 SITE PLAN
SCALE: 1"=30'

Dig Safely. Dig Right.
 Call Before You Dig
 Mark the Required Time
 Confirm Utility Response
 Request The Marks
 Dig Safely
 800-962-7962
 www.callbeforeyoudig.com

ALL RIGHTS RESERVED. COPY OR REPRODUCTION OF THIS DRAWING OR DOCUMENT OR ANY PORTION THEREOF WITHOUT THE EXPRESS WRITTEN PERMISSION OF CHAZEN ENGINEERING, LAND SURVEYING AND LANDSCAPE ARCHITECTURE CO., D.P.C. IS PROHIBITED. THIS DRAWING OR DOCUMENT IS NOT INTENDED TO BE SUBSTITUTED FOR ANY PROFESSIONAL ENGINEER, ARCHITECT, OR LANDSCAPE ARCHITECT'S DESIGN OR FOR ANY OTHER PROFESSIONAL DESIGN. THE USER OF THIS DRAWING OR DOCUMENT SHALL BE RESPONSIBLE FOR OBTAINING ALL NECESSARY PERMITS AND APPROVALS FROM THE APPROPRIATE AGENCIES. THE USER SHALL BE RESPONSIBLE FOR OBTAINING ALL NECESSARY INSURANCE COVERAGE. CHAZEN ENGINEERING, LAND SURVEYING AND LANDSCAPE ARCHITECTURE CO., D.P.C. IS NOT RESPONSIBLE FOR ANY DAMAGE, LOSS, OR LIABILITY ARISING FROM THE USE OF THIS DRAWING OR DOCUMENT.

IT IS A VIOLATION OF NEW YORK STATE EDUCATION LAW FOR ANY PERSON TO ALTER THIS DRAWING OR DOCUMENT IN ANY MANNER, UNLESS HE OR SHE IS ACTING UNDER THE DIRECTION OF A LICENSED DESIGN PROFESSIONAL (PROFESSIONAL ENGINEER, LAND SURVEYOR, ARCHITECT OR LANDSCAPE ARCHITECT). IF THIS DRAWING OR DOCUMENT IS ALTERED, THE ALTERED DESIGN PROFESSIONAL SHALL UPDATE THE DRAWING DOCUMENT AND THE DATE OF SUCH ALTERATION AND A SPECIFIC DESCRIPTION OF THE ALTERATION.

THE CHAZEN COMPANIES
 CHAZEN ENGINEERING, LAND SURVEYING & LANDSCAPE ARCHITECTURE CO., D.P.C.
 Office Locations:
 North Country Office: 21 Van Street, Plattsburgh, New York 12901
 Digital District Office: 547 New York Street, White Plains, New York 10601
 South Country Office: 22 Elm Street, Suite 1101, Glen Falls, New York 12801
 Westchester NY Office: 1 North Broadway, Suite 803, White Plains, New York 10601
 Nashville Tennessee Office: 2416 21st Ave S, Suite 1033, Nashville, Tennessee 37212
 Chattanooga Tennessee Office: 437 E. 9th St, Suite 203, Chattanooga, Tennessee 37403

REV.	DATE	DESCRIPTION
1	02/25/20	REVISED PER PLANNING BOARD COMMENTS
2	03/26/20	REVISED PER PLANNING BOARD COMMENTS
3	03/26/20	REVISED PER PLANNING BOARD COMMENTS
4	03/26/20	REVISED PER PLANNING BOARD COMMENTS
5	03/26/20	REVISED PER PLANNING BOARD COMMENTS

REV.	DATE	DESCRIPTION
1	10/10/18	REVISED FOR INTERNAL REVIEW
2	11/29/18	REVISED PER CITY COUNCIL COMMENTS
3	12/20/18	REVISED PER PLANNING BOARD COMMENTS
4	01/28/19	REVISED PER PLANNING BOARD COMMENTS
5	02/25/20	REVISED PER PLANNING BOARD COMMENTS

248 TIORONDA AVE., BEACON, N.Y.
SITE PLAN
 CITY OF BEACON, DUTCHESS COUNTY, NEW YORK

Designed	Checked
CL	CL
09/10/18	1" = 30'
PROJECT NO.	81750.00
SHEET NO.	3 of 10
C130	