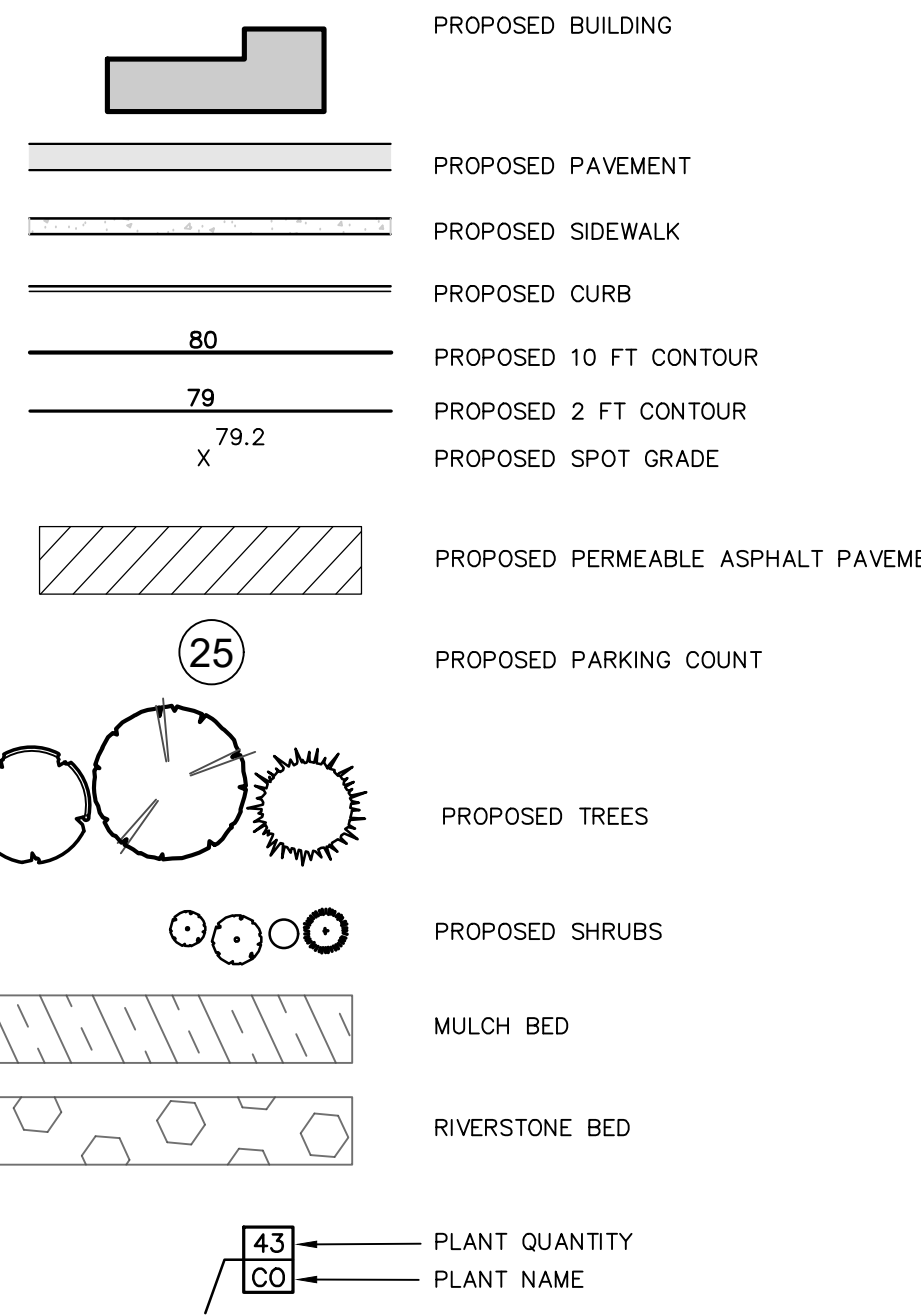


1 LANDSCAPE PLAN  
SCALE: 1"=30'

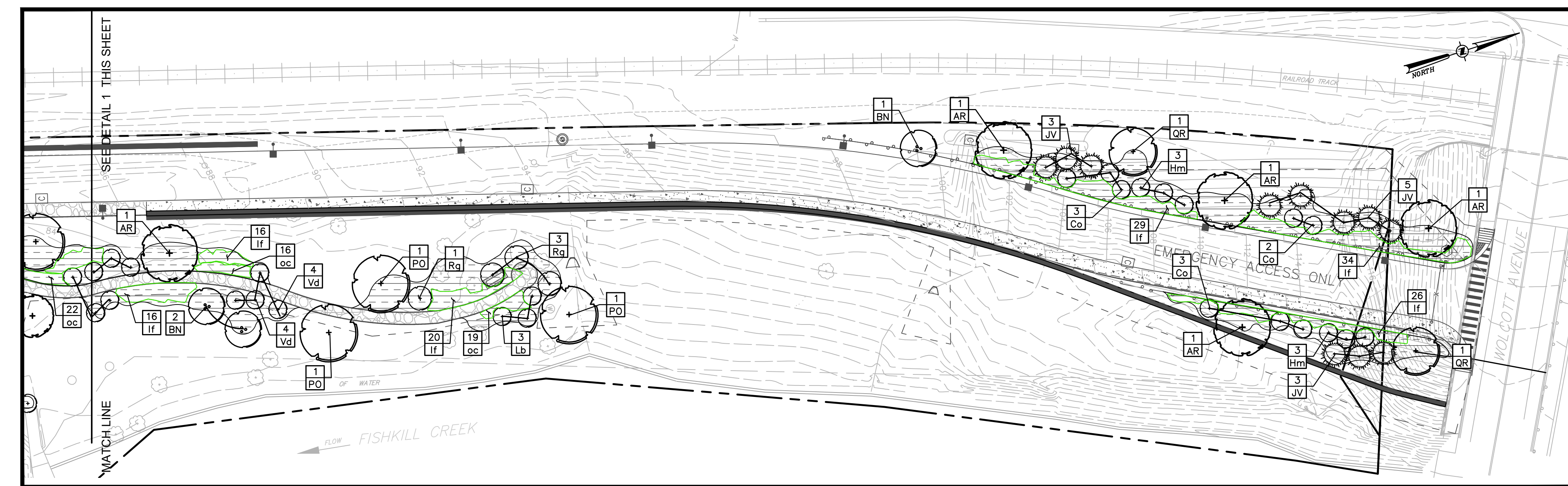
- E. LAWN:**
- LAWN SEED MIX: SEED AT THE RATE OF 5 TO 6 LBS PER 1,000 SF.
  - TEMPORARY COVER SEED MIX: SEED AT THE RATE OF 3 TO 4 LBS PER 1,000 SF.
  - TEMPORARY COVER SEED MIX TO BE APPLIED ONLY FOR LATE FALL OR SUMMER SOIL STABILIZATION OUTSIDE ALLOWED SEEDING PERIODS.
  - ALL SEEDING AREAS SHALL BE PROTECTED FROM EROSION BY ONE OF THE FOLLOWING METHODS:
    - A UNIFORM BLANKET OF STRAW APPLIED AT A RATE OF 2 TONS/ACRE MIN. TO BE APPLIED ONCE SEEDING IS COMPLETE.
    - WOOD FIBER CELLULOSE APPLIED WITH SEED MIX BY A HYDROSEDER AT A RATE OF 2,000 LBS/ACRE.
  - ALL SEEDING SLOPES 3:1 OR GREATER SHALL BE PROTECTED FROM EROSION WITH AUTE MESH OR APPROVED EQUAL.
  - ALL NEWLY PLANTED AREAS SHALL BE KEPT MOIST BY WATERING UNTIL GRASSES AND GROUND COVERS ARE WELL ESTABLISHED. THE LANDSCAPE CONTRACTOR MUST WATER PLANT MATERIAL WHEN NECESSARY FOR 60 DAYS AFTER INSTALLATION.
  - LAWN ARE TO BE MAINTAINED UNTIL THEY BECOME ESTABLISHED. UNTIL FINAL ACCEPTANCE AND NOT LESS THAN 60 DAYS AFTER COMPLETION OF ALL WORK, TREES, SHRUBS, GROUND COVERS, AND PERENNIALS SHALL BE MAINTAINED AGAINST DEFICITS INCLUDING POOR GROWTH AND DEATHS, EXCEPT WHEN RESULTING FROM OWNER NEGLECT, INCIDENTS THAT ARE BEYOND THE CONTROL OF THE LANDSCAPE INSTALLER AND DAMAGE OR ABUSE BY OTHERS, FOR AT LEAST ONE FULL YEAR AFTER PROJECT COMPLETION.
- ALL LANDSCAPING SHOWN ON THESE PLANS SHALL BE MAINTAINED IN A HEALTHY AND VIGOROUS GROWING CONDITION THROUGHOUT THE DURATION OF THE PROPOSED USE OF THE SITE. ALL VEGETATION NOT SO MAINTAINED SHALL BE REPLACED WITH NEW COMPARABLE VEGETATION AT THE BEGINNING OF THE NEXT GROWING SEASON.

**SITE LEGEND:**



**SOIL RESTORATION NOTES:**

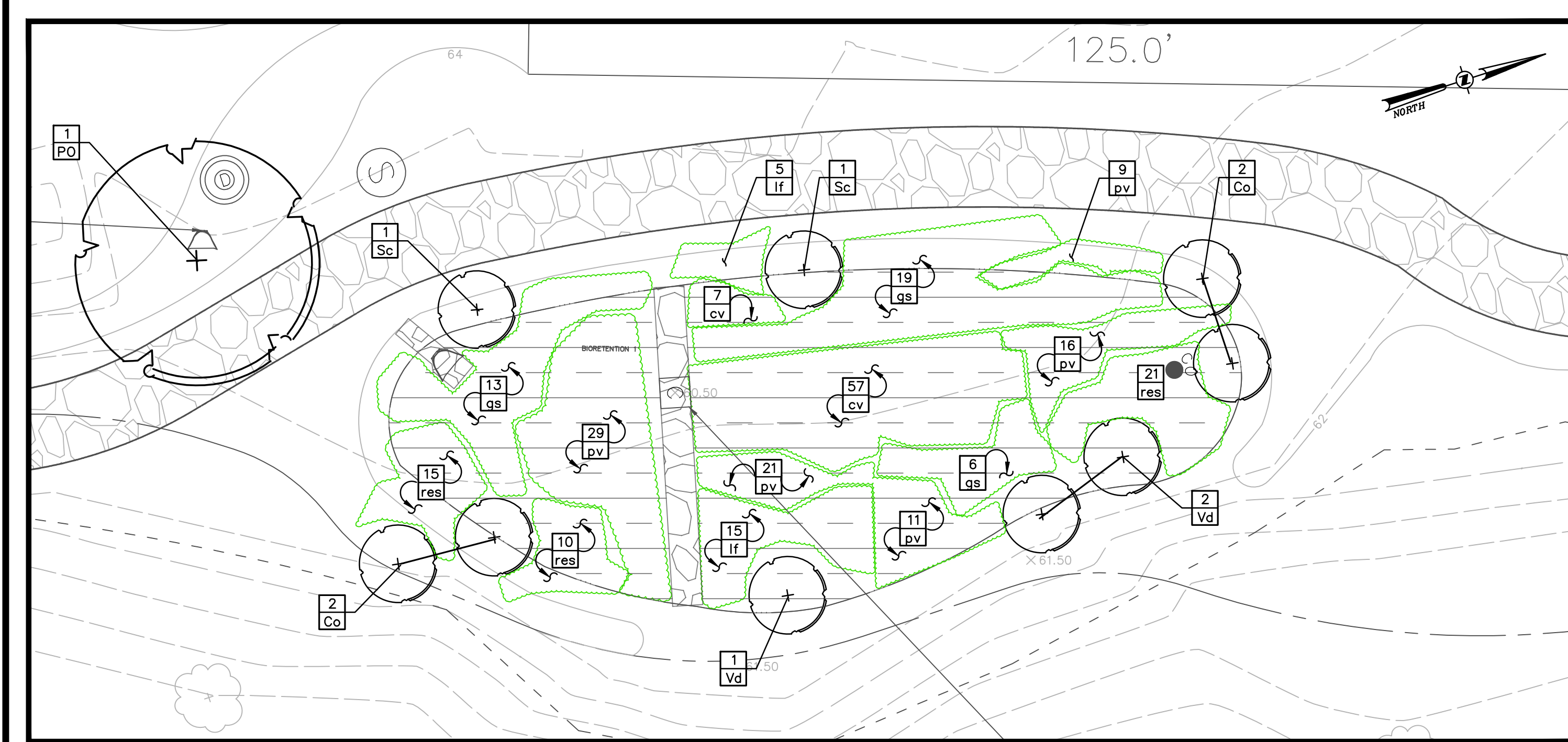
- APPLY THREE INCHES OF COMPOST OVER SOIL. COMPOST SHALL BE SEED, FROM PLANT DERIVED MATERIALS, FREE OF VISIBLE WEED SEEDS, HAVE NO VISIBLE FREE WATER OR MUST BE PRODUCED WHEN HANDLING PASS THROUGH A HALF INCH SCREEN AND HAVE A PH SUITABLE TO GROW DESIRED PLANTS.
  - TILL COMPOST INTO THE SUBSOIL TO A DEPTH OF AT LEAST 12-INCHES USING A CAT-MOUNTED RIPPER, TRACTOR MOUNTED DISC, OR TILLER, MIXING AND CIRCULATING AIR AND COMPOST INTO SUB-SOILS.
  - ROCK-POCK UNTIL UPLIFTED STONE/ROCK MATERIALS OF FOUR INCHES AND LARGER SIZE ARE CLEARED OFF THE SITE.
  - APPLY TOPSOIL TO A DEPTH OF SIX INCHES.
- NOTES:
- BROADCAST DENSITY, MULCHING, AND FIRST & SECOND SEASON MAINTENANCE TO MATCH MANUFACTURER'S RECOMMENDATIONS TO ENSURE PROPER ESTABLISHMENT.
  - OWNER TO FOLLOW GROWING SEASON MAINTENANCE RECOMMENDATIONS AFTER 1 YEAR TO ACHIEVE PROPER ESTABLISHMENT. CONTRACTOR TO INSTALL A 3"-4" SPADE CUT EDGE AT ALL LAWN/MULCH INTERFACES.
  - CONTRACTOR TO ROUGHLY STAKE OUT AREA FOR OWNER APPROVAL, PRIOR TO SOILING AND MULCHING.
  - ALL AREAS DISTURBED AS A RESULT OF CONSTRUCTION ACTIVITIES AND LANDSCAPING AREAS SHALL BE HYDRO-SEEDED TO ESTABLISH LAWN PER LANDSCAPING NOTES.



2 LANDSCAPE PLAN-EMERGENCY ACCESS DRIVE  
SCALE: 1"=30'

QTY	ABRV	BOTANICAL NAME	COMMON NAME	SIZE	COND	SPACING	REMARKS
<b>TREES</b>							
9	AR	Acer rubrum 'October Glory'	October Glory Red Maple	3" Cal.	B&B	As Shown	
10	BN	Betula nigra	River Birch	8"-10" Clump	B&B	As Shown	Multi-Stem Clump
2	LT	Liriodendron tulipifera	Tulip Tree	3" Cal.	B&B	As Shown	
38	JV	Juniperus virginiana	Eastern Red Cedar	8"-10"	B&B	As Shown	
10	GT	Gleditsia triacanthos 'cutliver'	Honeylocust	3" Cal.	B&B	As Shown	Fall Digging Hazard
8	NS	Nyssa sylvatica	Sour Gum	3" Cal.	B&B	As Shown	Fall Digging Hazard
5	PA	Platanus x acerifolia 'Bloodgood'	Bloodgood London Planetree	3" Cal.	B&B	As Shown	Fall Digging Hazard
7	PO	Platanus occidentalis	American Sycamore	2 - 2.5" Cal.	B&B	As Shown	
14	PT	Prunus pennsylvanica	Yoshino Cherry	2" Cal.	B&B	As Shown	
4	QR	Quercus robur borealis	Northern Red Oak	3" Cal.	B&B	As Shown	Fall Digging Hazard
2	QB	Quercus bicolor	Swamp White Oak	3" Cal.	B&B	As Shown	Fall Digging Hazard
5	TC	Tilia cordata 'Greenspire'	Greenspire Linden	3" Cal.	B&B	As Shown	Fall Digging Hazard
<b>SHRUBS</b>							
3	Am	Amelanchier canadensis	Servicberry	30"-36"	Cont.	As Shown	
63	CI	Comptaria peregrina	Sweet Fern	#3 Cont.	As Shown	As Shown	
6	Co	Cornus sericea	Sky Dogwood	24"-30"	Cont.	As Shown	
20	Co	Cornus sericea	Red-Osier Dogwood	30"-36"	Cont.	As Shown	
35	Ca	Cornus sanguinea 'cato'	Arctic Sun Dogwood	18"-24"	Cont.	As Shown	
12	Hm	Hieracium virginiana	Mountain Laurel	3" - 4"	Cont.	As Shown	
13	KI	Kalmia latifolia	Mountain Laurel	30"-36"	Cont.	As Shown	
3	Lb	Lindera benzoin	Spicebush	36"	Cont.	As Shown	
26	Rg	Rhus typhina 'Lacinata'	Cultiv. Staghorn Sumac	36"	Cont.	As Shown	
35	Sp	Salix x burbankii 'Gold Flame'	Gold Flame Salix	36"	Cont.	As Shown	
13	Va	Viburnum acerifolium	Mapleleaf Viburnum	24"-30"	Cont.	As Shown	
24	Va	Viburnum dentatum	Doublefile Viburnum	30"-36"	Cont.	As Shown	
10	Xv	Ilex verticillata 'Winter Red'	Winter Red Winterberry	18"-24"	Cont.	As Shown	
<b>PERENNIALS/GRASSES</b>							
374	cv	Carex vulpinoidea	Fox Sedge	#1 Cont.	8" O.C.		
314	if	Liatris scariosa	Bluetop deer-veitch	#1 Cont.	16"-18" O.C.		
707	oc	Chamaelirium luteum	Chamaelirium Fern	#2 Cont.	2-3" O.C.		
453	pv	Panicum virgatum 'Shenandoah'	Shenandoah Switch Grass	#2 Cont.	2-3" O.C.		
133	res	Rubus lasiocarpus	Cultiv. Conifer	#1 Cont.	18" O.C.		

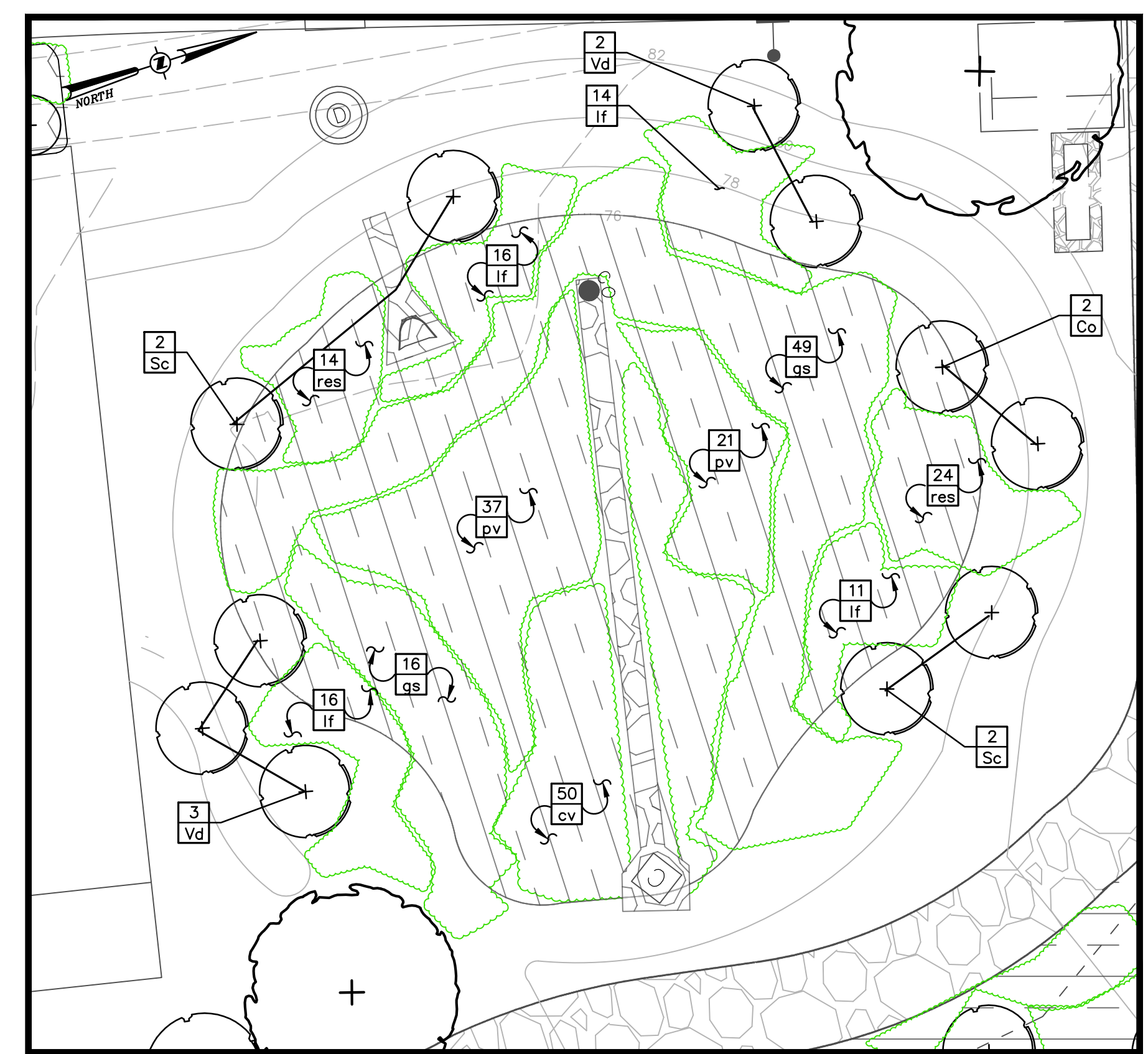
3 OVERALL PLANT LIST  
SCALE: NTS



4 BIORETENTION AREA 1 PLANTING PLAN  
SCALE: 1"=10'

QTY	ABRV	BOTANICAL NAME	COMMON NAME	SIZE	COND	SPACING	REMARKS
<b>TREES</b>							
1	PO	Platanus occidentalis	American Sycamore	2 - 2.5" Cal.	B&B	As Shown	
<b>SHRUBS</b>							
4	Co	Cornus sericea	Red-Osier Dogwood	30"-36"	Cont.	As Shown	
2	Sc	Sambucus canadensis	Black Elderberry	12" - 18"	Cont.	As Shown	
3	Va	Viburnum dentatum	Aronwood Viburnum	30" - 36"	Cont.	As Shown	
<b>PERENNIALS/GRASSES</b>							
58	cv	Carex vulpinoidea	Fox Sedge	#1 Cont.	8" O.C.		
40	sp	Sparganium angustifolium	Fox Mowing Grass	#1 Cont.	16"-18" O.C.		
20	if	Liatris scariosa	Bluetop deer-veitch	#1 Cont.	16"-18" O.C.		
12	pv	Panicum virgatum 'Shenandoah'	Shenandoah Switch Grass	#2 Cont.	2-3" O.C.		
46	res	Rubus lasiocarpus	Cultiv. Conifer	#1 Cont.	18" O.C.		

5 BIORETENTION AREA 1 PLANT LIST  
SCALE: NTS



6 BIORETENTION AREA 2 PLANTING PLAN  
SCALE: 1"=10'

QTY	ABRV	BOTANICAL NAME	COMMON NAME	SIZE	COND	SPACING	REMARKS
<b>TREES</b>							
1	NS	Nyssa sylvatica	Sour Gum	2"-3" Cal.	B&B	As Shown	Fall Digging Hazard
<b>SHRUBS</b>							
2	Co	Cornus sericea	Red-Osier Dogwood	30"-36"	Cont.	As Shown	
4	Sc	Sambucus canadensis	Black Elderberry	12" - 18"	Cont.	As Shown	
5	Va	Viburnum dentatum	Aronwood Viburnum	30" - 36"	Cont.	As Shown	
<b>PERENNIALS/GRASSES</b>							
51	cv	Carex vulpinoidea	Fox Sedge	#1 Cont.	8" O.C.		
67	sp	Sparganium angustifolium	Fox Mowing Grass	#1 Cont.	16"-18" O.C.		
58	if	Liatris scariosa	Bluetop deer-veitch	#1 Cont.	16"-18" O.C.		
12	pv	Panicum virgatum 'Shenandoah'	Shenandoah Switch Grass	#2 Cont.	2-3" O.C.		
42	res	Rubus lasiocarpus	Cultiv. Conifer	#1 Cont.	18" O.C.		

7 BIORETENTION AREA 2 PLANT LIST  
SCALE: NTS