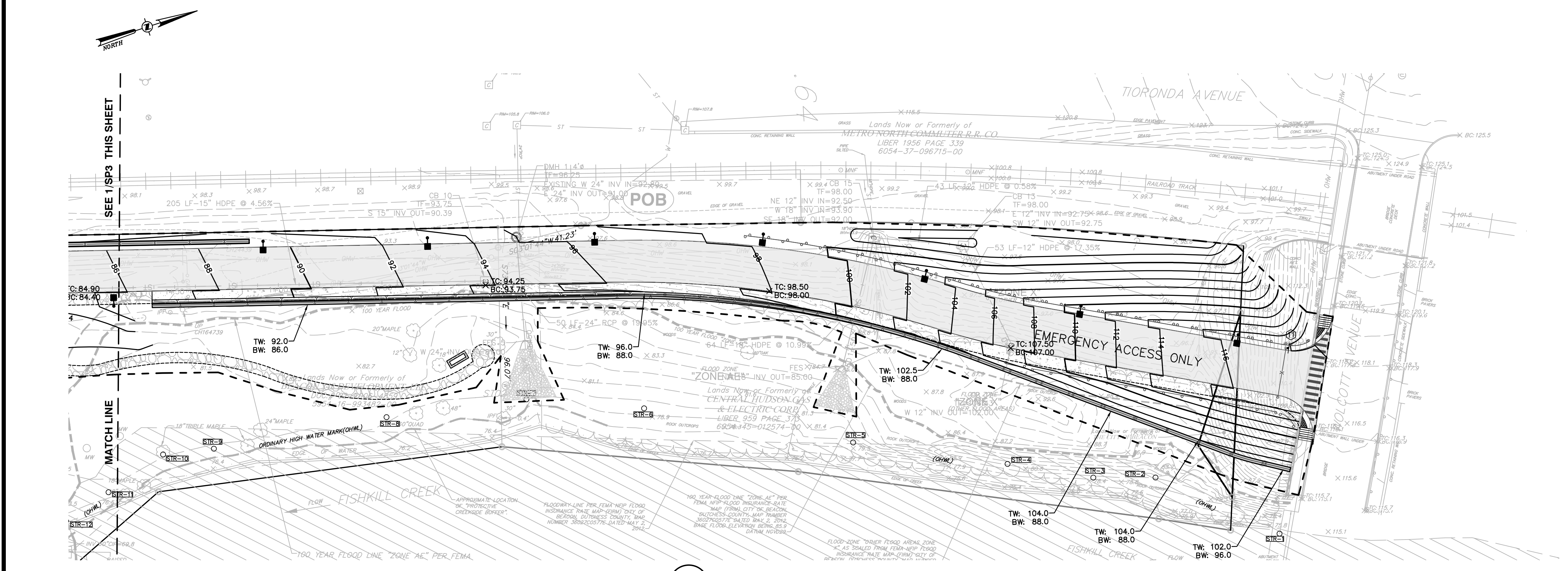


1 GRADING PLAN
SCALE: 1"=30'

GRADING & DRAINAGE LEGEND:

- PROPOSED PROPERTY LINE
- PROPOSED BUILDING
- PROPOSED PAVEMENT
- PROPOSED 10 FT CONTOUR
- PROPOSED 2 FT CONTOUR
- PROPOSED SPOT GRADE
- PROPOSED TREE LINE
- PROPOSED SHRUB LINE
- PROPOSED DRAINAGE SWALE
- PROPOSED WORK LIMIT LINE
- PROPOSED SANITARY SEWER LINE
- PROPOSED FORCE MAIN
- PROPOSED WATER LINE
- PROPOSED STORM DRAIN LINE
- PROPOSED HYDRANT
- PROPOSED SANITARY MANHOLE
- PROPOSED CATCH BASIN
- PROPOSED DRAINAGE MANHOLE



2 GRADING PLAN
SCALE: 1"=30'

Dig Safely. New York.
 Call Before You Dig
 Mark the Required Time
 Confirm Utility Response
 Request The Marks
800-962-7962
www.digsafely.com

ALL RIGHTS RESERVED. COPY OR REPRODUCTION OF THIS DRAWING OR DOCUMENT OR ANY PORTION THEREOF WITHOUT THE EXPRESS WRITTEN PERMISSION OF CHAZEN ENGINEERING, LAND SURVEYING & LANDSCAPE ARCHITECTURE CO., D.P.C. IS STRICTLY PROHIBITED. THIS DRAWING OR DOCUMENT IS NOT INTENDED OR REPRESENTED TO BE SUITABLE FOR ANY PURPOSE OTHER THAN THAT FOR WHICH IT WAS DESIGNED AND FOR WHICH IT WAS INTENDED. ANY REVISIONS TO THIS DRAWING OR DOCUMENT SHALL BE MADE BY THE ORIGINAL DESIGNER AND ENGINEER. ANY CHANGES MADE TO THIS DRAWING OR DOCUMENT WITHOUT THE WRITTEN PERMISSION OF CHAZEN ENGINEERING, LAND SURVEYING & LANDSCAPE ARCHITECTURE CO., D.P.C. SHALL BE AT USER'S SOLE RISK AND WITHOUT LIABILITY TO CHAZEN ENGINEERING, LAND SURVEYING & LANDSCAPE ARCHITECTURE CO., D.P.C.

IF IT IS A VIOLATION OF NEW YORK STATE EDUCATION LAW FOR ANY PERSON TO ALTER THIS DRAWING OR DOCUMENT IN ANY MANNER, THE USER SHALL BE SOLELY RESPONSIBLE FOR ANY SUCH ALTERATION. CHAZEN ENGINEERING, LAND SURVEYING & LANDSCAPE ARCHITECTURE CO., D.P.C. IS NOT RESPONSIBLE FOR ANY SUCH ALTERATION. IF THIS DRAWING OR DOCUMENT IS ALTERED, THE ALTERED VERSION SHALL BE THE RESPONSIBILITY OF THE USER OF THE DRAWING OR DOCUMENT.

ALTERED BY: [Signature] DATE: [Date]

Chazen COMPANIES
Providing to the Employer's Benefit
 Engineers
 Land Surveyors
 Planners
 Environmental & Safety Professionals
 Landscape Architects

CHAZEN ENGINEERING, LAND SURVEYING & LANDSCAPE ARCHITECTURE CO., D.P.C.
 Office Locations:
 Dutchess County Office: 21 Elm Street, Poughkeepsie, New York 12560
 North Country Office: 22 Elm Street, Suite 110, Glen Falls, New York 12801
 Southwestern NY Office: 1 North Broadway, Suite 803, White Plains, New York 10601
 Nashville Tennessee Office: 2415 21st Ave S, Suite 1033, Nashville, Tennessee 37212
 Chattanooga Tennessee Office: 437 E. 9th St, Suite 203, Chattanooga, Tennessee 37403

rev.	date	description
4	02/25/20	REVISED PER PLANNING BOARD COMMENTS
3	02/28/20	REVISED PER PLANNING BOARD COMMENTS
2	12/29/19	REVISED PER PLANNING BOARD COMMENTS
1	10/15/18	REVISED PER INTERNAL REVIEW

248 TIRONDA AVE., BEACON, N.Y.
GRADING PLAN
 CITY OF BEACON, DUTCHESS COUNTY, NEW YORK

designed: [Signature] checked: [Signature]
 date: 09/16/18 scale: 1"=30'
 project no.: 81750.00
 sheet no.: C140
 of 10