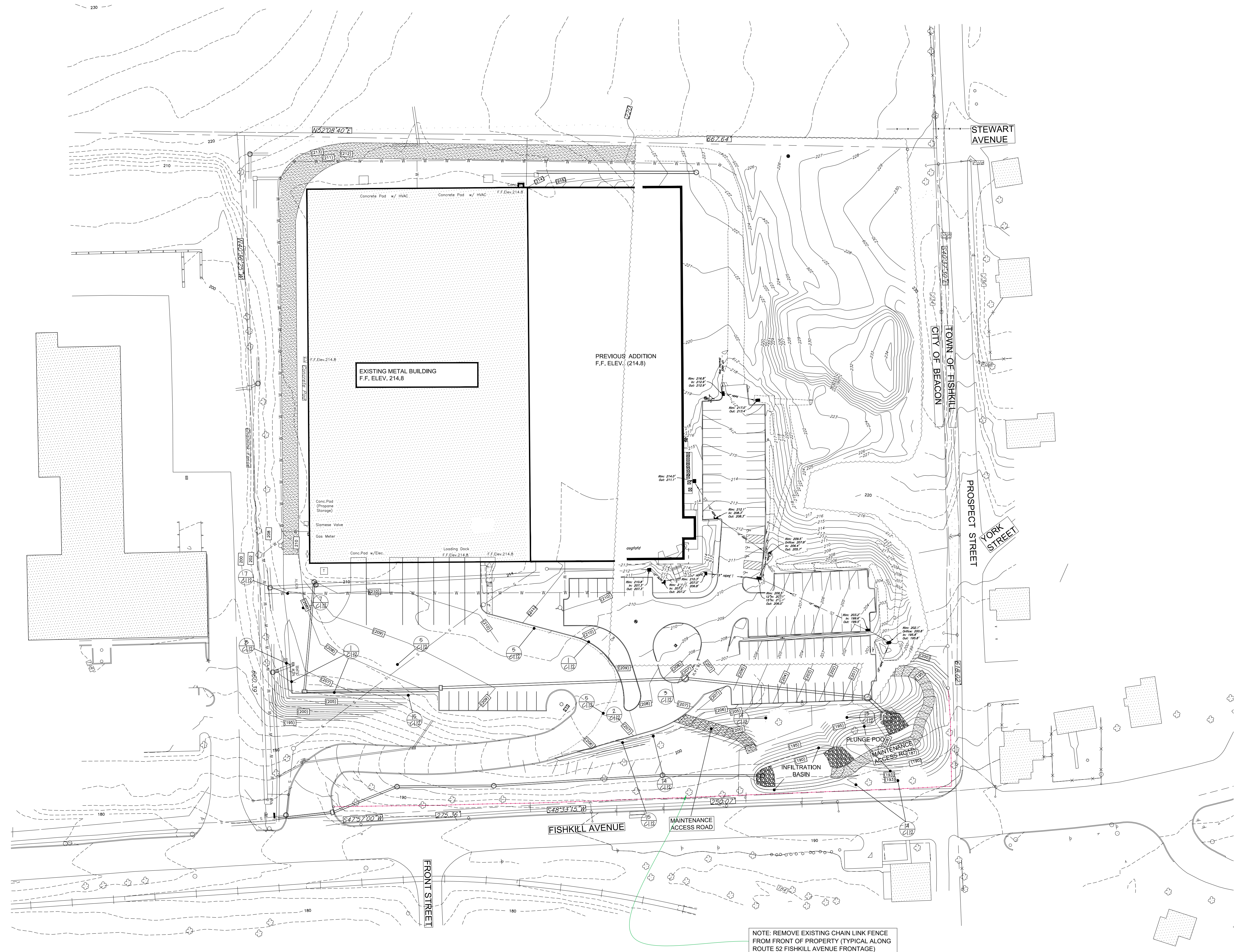


APPROVED BY RESOLUTION OF THE PLANNING BOARD OF THE CITY OF BEACON, NEW YORK, ON THE \_\_\_\_\_ DAY OF \_\_\_\_\_, 20\_\_\_\_, SUBJECT TO ALL REQUIREMENTS AND CONDITIONS OF SAID RESOLUTION. ANY CHANGE, ERASURE, MODIFICATION OR REVISION OF THIS PLAN, AS APPROVED, SHALL VOID THIS APPROVAL.

SIGNED THIS \_\_\_\_\_ DAY OF \_\_\_\_\_, 20\_\_\_\_ BY \_\_\_\_\_ CHAIRMAN \_\_\_\_\_ SECRETARY

IN ABSENCE OF THE CHAIRMAN OR SECRETARY, THE ACTING CHAIRMAN OR ACTING SECRETARY RESPECTIVELY MAY SIGN IN THIS PLACE.



LEGEND (Dwg. No. C1.3)

DESCRIPTION	EXISTING	PROPOSED
PROPERTY LINE	[Symbol]	N/A
BUILDING	[Symbol]	[Symbol]
DISTURBANCE LIMIT LINE	N/A	[Symbol]
WELL	[Symbol]	[Symbol]
MONITORING WELL	Monitoring Well	N/A
TRANSFORMER	[Symbol]	N/A
TREE	[Symbol]	REFER TO DWG. C1.13
TREE WALL/WELL	N/A	[Symbol]
TREE LINE	[Symbol]	[Symbol]
CONCRETE CURB	[Symbol]	[Symbol]
DROP CURB	N/A	[Symbol]
CONCRETE WALK	N/A	[Symbol]
HANDICAPPED RAMP	N/A	[Symbol]
PARKING STALL	N/A	[Symbol]
HC PARKING SYMBOL	N/A	HC
RIP-RAP SWALE	N/A	[Symbol]
NEW PAVEMENT	N/A	[Symbol]
PAVEMENT OVERLAY	N/A	[Symbol]
PAVEMENT RAISE	N/A	[Symbol]
LIGHT POLE	[Symbol]	REFER TO DWG. C1.14
PAVEMENT NOTCHING INTO EXISTING PAVEMENT	N/A	[Symbol]
GUIDE RAIL	N/A	[Symbol]
PAVEMENT EDGE	[Symbol]	[Symbol]
SIGN	[Symbol]	N/A
FENCE	[Symbol]	[Symbol]
BUILDING ENTRANCE	[Symbol]	[Symbol]
MAINTENANCE ACCESS ROAD	N/A	[Symbol]

REVISIONS:

NO.	DATE	DESCRIPTION	BY

Site Plan  
Scale: 1" = 30'

NOTE: REMOVE EXISTING CHAIN LINK FENCE FROM FRONT OF PROPERTY (TYPICAL ALONG ROUTE 52 FISHKILL AVENUE FRONTAGE)

Amendment To Site Plan Application  
Existing Conditions Survey - Sheet 2 of 4