





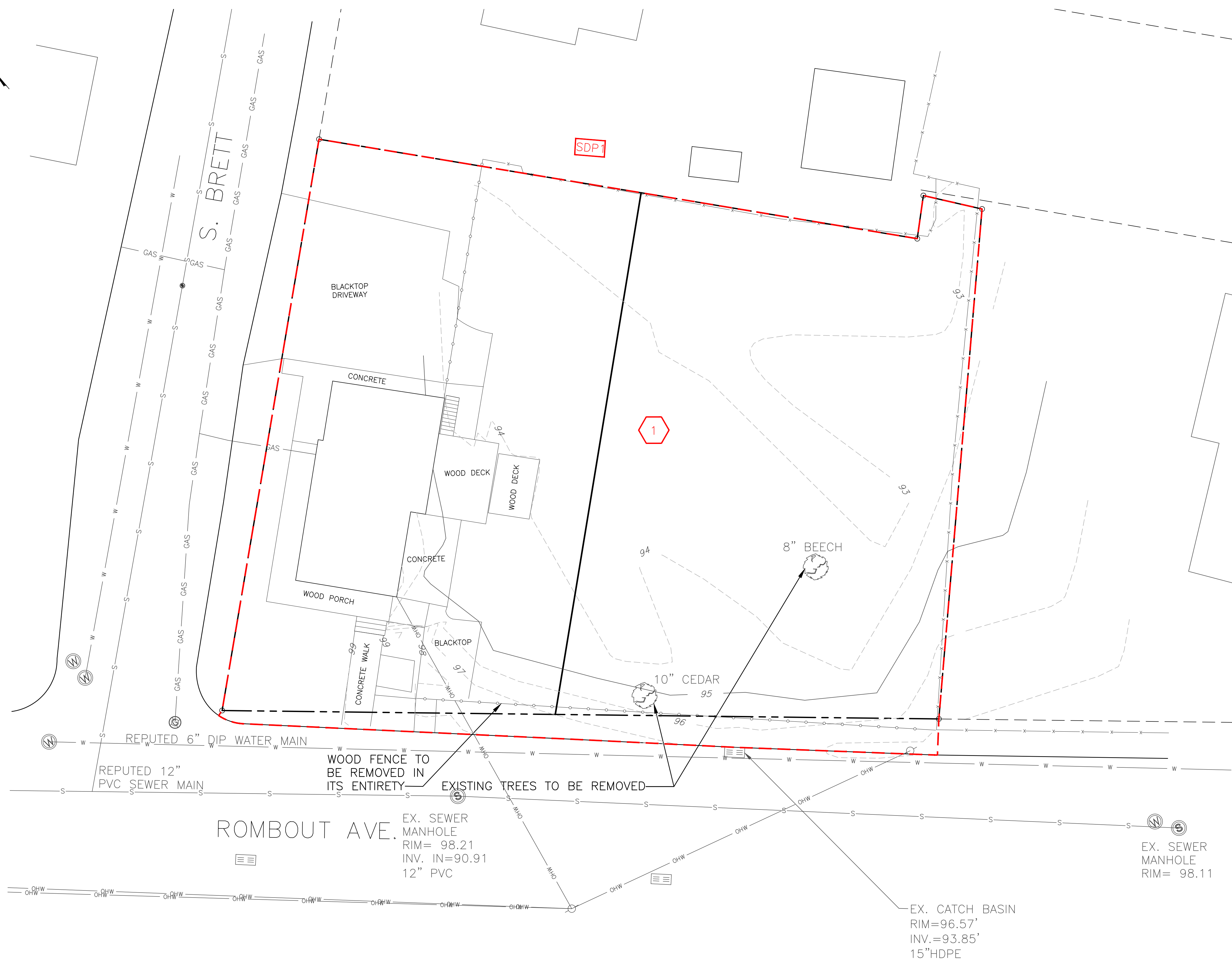
<b>PROJECT INFORMATION:</b>	
PARCEL OWNER:	KARIC ASSOCIATES, LLC; 4 SCHOEN LANE, NEW ROCHELLE, NY 10804
ENGINEER OF RECORD:	HUDSON LAND DESIGN P.C., 174 MAIN STREET, BEACON NY 12508
SURVEYOR OF RECORD:	JOHN J. POST JR.; PO BOX 827, STONE RIDGE, NY 12484 (P) 845-331-3931
PROJECT LOCATION:	160 ROMBOUT AVENUE, BEACON NY 12508
TAX PARCEL ID:	CITY OF BEACON: 5954-35-853796
PARCEL AREA:	0.34 ACRES TOTAL
ZONING DISTRICT:	R1-5 ZONING DISTRICT
POTABLE WATER SUPPLY:	MUNICIPAL WATER
SEWAGE DISPOSAL:	MUNICIPAL SEWER

**MAP REFERENCES:**  
 1. EXISTING FEATURES AS SHOWN ON THIS SUBDIVISION PLAN PROVIDED BY MAPPING OBTAINED FROM JOHN J. POST JR., L.S. FROM NOVEMBER 21, 2019.

<b>LEGEND:</b>	
SOIL BOUNDARY	
DRAINAGE BOUNDARY	
SUBCATCHMENT ID	
DESIGN POINT	

PRE-DRAINAGE  
 DA 1 = 15,206 SQFT  
 IMPERVIOUS = 3,331 SQFT  
 GRASS C = 11,875 SQFT

TIME OF CONCENTRATION, T<sub>c</sub>:  
 1. DIRECT ENTRY = 6 MINUTES



DRAWN BY: CMB				CHECKED BY: DGK			
REVISIONS:				REVISIONS:			
NO.	DATE	DESCRIPTION	BY	NO.	DATE	DESCRIPTION	BY

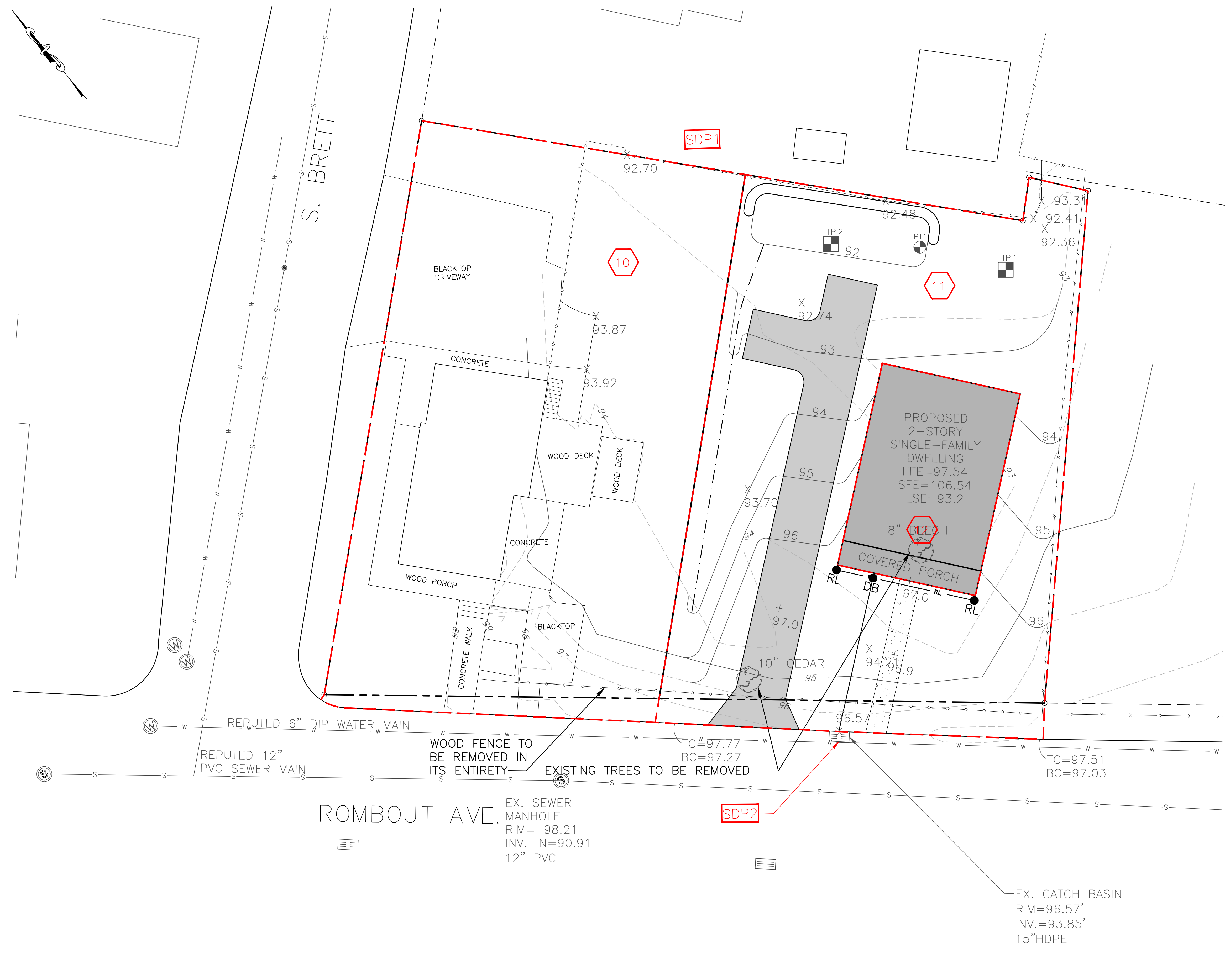
BEFORE UNDERTAKING ANY DIGGING, DRILLING, BLASTING OR DISTURBANCE TO THE GROUND IN ANY WAY, FOR ANY REASON, ALL INDIVIDUALS MUST CONTACT DIG SAFELY NEW YORK AT 811 OR WWW.CALL811.COM



**HUDSON LAND DESIGN**  
 HUDSON LAND DESIGN  
 PROFESSIONAL ENGINEERING P.C.  
 174 MAIN ST., BEACON, NEW YORK 12508  
 13 CHAMBERS ST., NEWBURGH, NEW YORK 12550  
 PH: 845-440-6926  
 F: 845-440-6637

160 ROMBOUT AVENUE SUBDIVISION  
**PRE DRAINAGE MAP**  
 160 ROMBOUT AVENUE  
 CITY OF BEACON  
 DUTCHESS COUNTY, NEW YORK  
 TAX ID: 5954-35-853796

JOB #: 2019:050  
 DATE: 02/25/2020  
 SCALE: AS NOTED  
 TITLE: DM-1  
 SHEET: 1 OF 2



**LEGEND:**  
 SOIL BOUNDARY ———  
 DRAINAGE BOUNDARY - - - - -  
 SUBCATCHMENT ID 10  
 DESIGN POINT SDP

POST-DRAINAGE

DA 10 = 7,456 SQFT  
 IMPERVIOUS = 3,331 SQFT  
 GRASS C = 4,125 SQFT

TIME OF CONCENTRATION, T<sub>c</sub>:  
 1. DIRECT ENTRY = 6 MINUTES

DA 11 = 6,601 SQFT  
 IMPERVIOUS = 1,194 SQFT  
 GRASS C = 5,407 SQFT

TIME OF CONCENTRATION, T<sub>c</sub>:  
 1. DIRECT ENTRY = 6 MINUTES

DA 12 = 1,148 SQFT  
 IMPERVIOUS = 1,148

TIME OF CONCENTRATION, T<sub>c</sub>:  
 1. DIRECT ENTRY = 6 MINUTES

ROMBOUT AVE. EX. SEWER MANHOLE  
 RIM= 98.21  
 INV. IN=90.91  
 12" PVC

EX. CATCH BASIN  
 RIM=96.57'  
 INV.=93.85'  
 15"HDPE

DRAWN BY: CMB				CHECKED BY: DGK			
REVISIONS:				REVISIONS:			
NO.	DATE	DESCRIPTION	BY	NO.	DATE	DESCRIPTION	BY

BEFORE UNDERTAKING ANY DIGGING, DRILLING, BLASTING OR DISTURBANCE TO THE GROUND IN ANY WAY, FOR ANY REASON, ALL INDIVIDUALS MUST CONTACT  
 DIG SAFELY NEW YORK  
 AT  
 811 OR WWW.CALL811.COM



**HUDSON**  
 LAND DESIGN

HUDSON LAND DESIGN  
 PROFESSIONAL ENGINEERING P.C.  
 174 MAIN ST., BEACON, NEW YORK 12508  
 13 CHAMBERS ST., NEWBURGH, NEW YORK 12550  
 PH: 845-440-6926  
 F: 845-440-6637

160 ROMBOUT AVENUE SUBDIVISION  
 POST DRAINAGE MAP  
 160 ROMBOUT AVENUE  
 CITY OF BEACON  
 DUTCHESS COUNTY, NEW YORK  
 TAX ID: 5954-35-853796

JOB #: 2019-050  
 DATE: 02/25/2020  
 SCALE: AS NOTED  
 TITLE: DM-2  
 SHEET: 2 OF 2