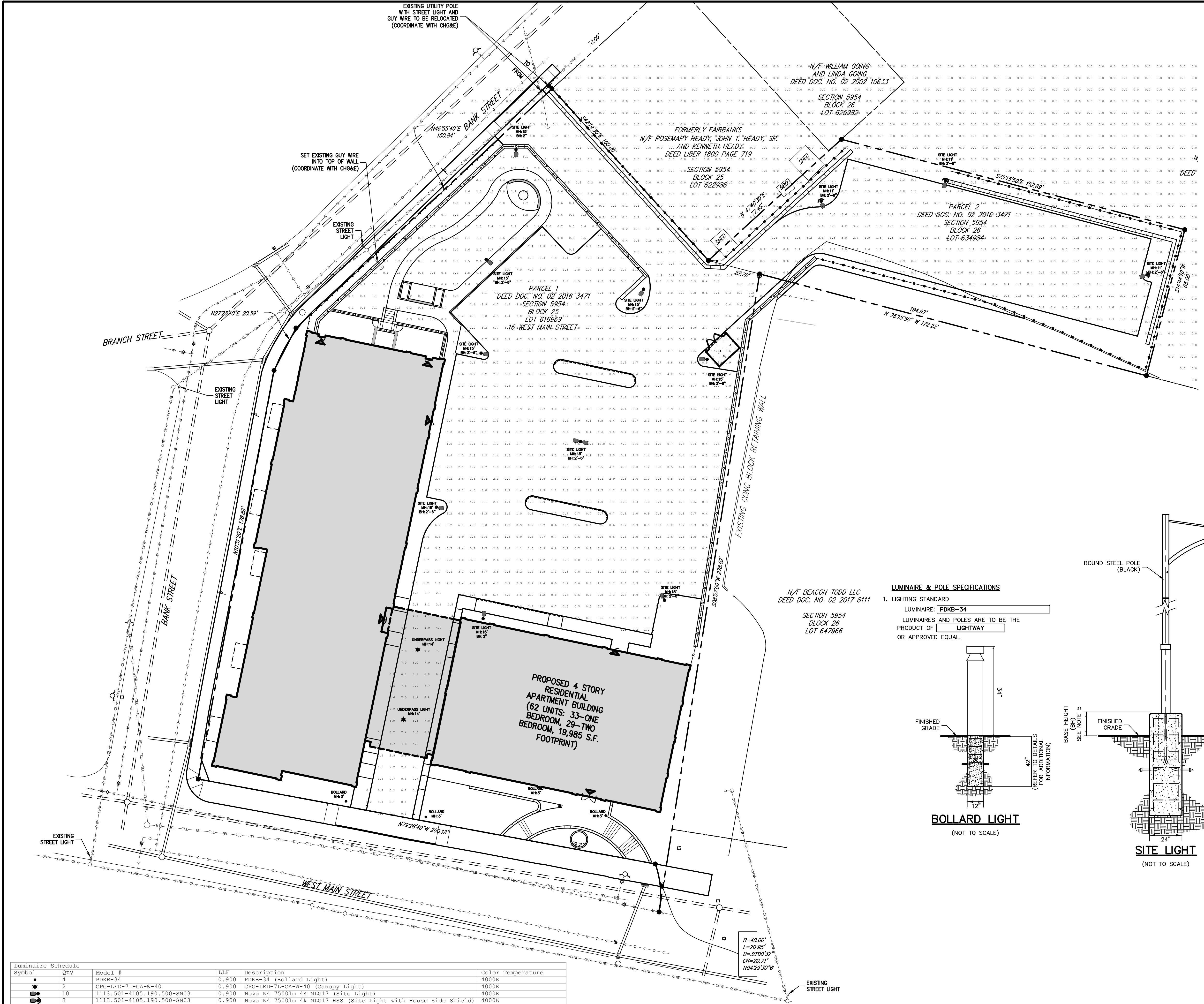


NOT FOR CONSTRUCTION

COPYRIGHT © 2019 BY JMC. All rights reserved. No part of this document may be reproduced, stored in a retrieval system, or transmitted in any form or by any means, electronic, mechanical, photocopying, recording, or by any information storage and retrieval system, without the prior written permission of JMC. JMC PLANNING, ENGINEERING, LANDSCAPE ARCHITECTURE & LAND SURVEYING, PLLC. JMC SITE DEVELOPMENT CONSULTANTS, LLC. JOHN MEYER CONSULTING, INC. All modifications or additions to this document shall be the property of JMC.



### LEGEND

	EXISTING PROPERTY LINE
	ADJACENT PROPERTY LINE
	EXISTING BUILDING LINE
	EXISTING CURB LINE
	EXISTING STONE WALL
	EXISTING RETAINING WALL
	EXISTING FENCE
	EXISTING UTILITY POLE
	EXISTING LIGHT POLE
	PROPOSED BUILDING LINE
	PROPOSED CONCRETE CURB
	PROPOSED CONCRETE FLUSH CURB
	PROPOSED CONCRETE SIDEWALK
	PROPOSED WOOD GUIDE RAIL
	PROPOSED PRIVACY FENCE
	PROPOSED RETAINING WALL AND SAFETY FENCE (DESIGN BY OTHERS)
	PROPOSED SINGLE ARM LIGHTING STANDARD
	PROPOSED DOUBLE ARM LIGHTING STANDARD
	PROPOSED BOLLARD LIGHTING STANDARD
	PROPOSED UNDERPASS LIGHT
	PROPOSED ILLUMINANCE IN FOOT-CANDLES

- ### NOTES:
- ALL CABLES AND WIRING SHALL BE INSTALLED UNDERGROUND IN CONDUIT. CONDUIT SHALL BE SCHEDULE 40 PVC CONDUIT INSTALLED WITH TWO (2) FEET OF COVER. MINIMUM SIZE OF CONDUIT SHALL BE TWO (2) INCH DIAMETER.
  - CIRCUIT WIRING SHALL BE DESIGNED BY THE PROJECT ELECTRICAL ENGINEER.
  - LIGHTING LEVELS ARE MEASURED AT GROUND SURFACE ELEVATION.
  - THIS PLAN DOES NOT SHOW ANY PROPOSED BUILDING MOUNTED LIGHTING, OTHER THAN BELOW UNDERPASS BETWEEN BUILDINGS.

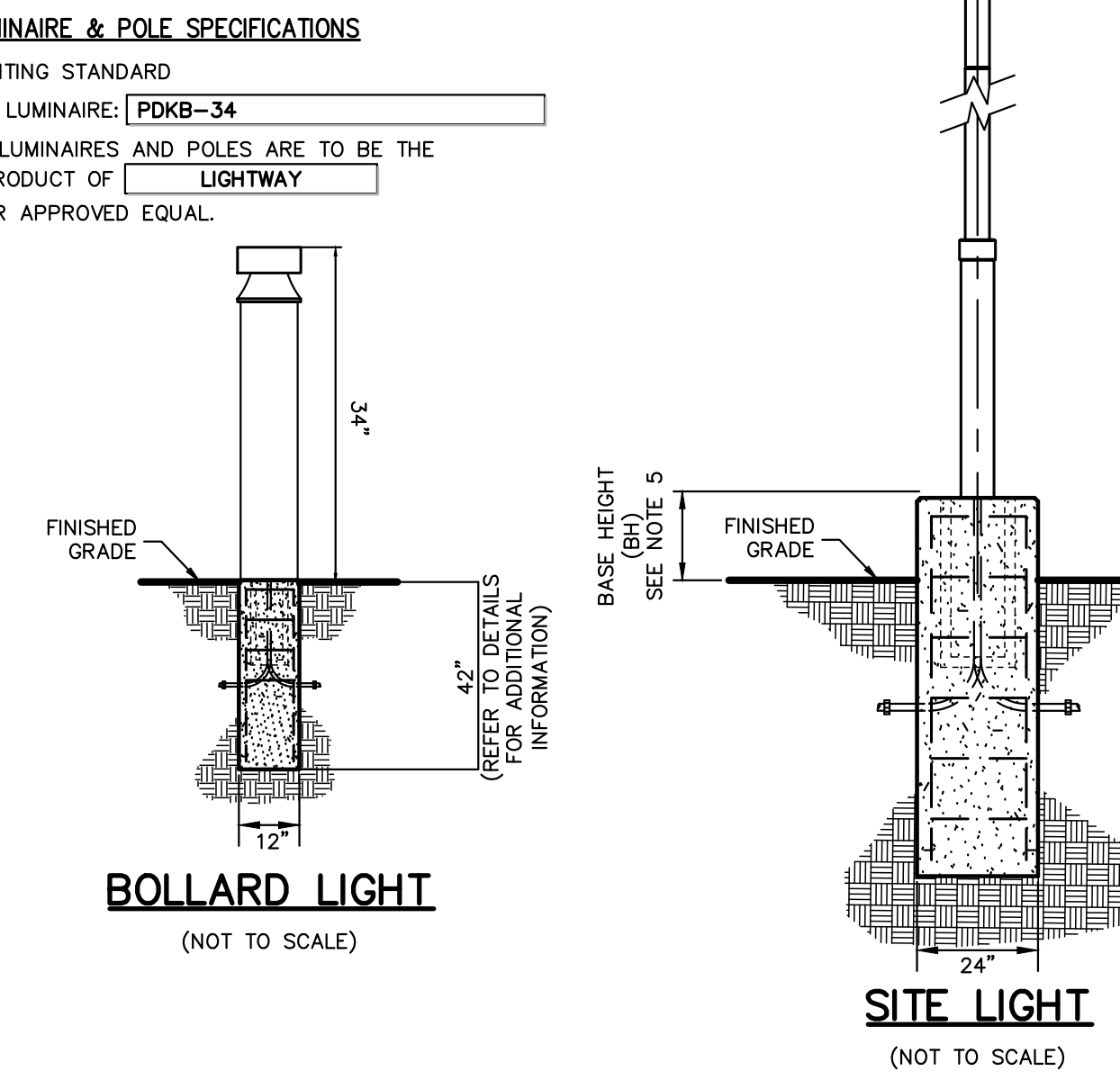
### LUMINAIRE & POLE SPECIFICATIONS

- LIGHTING STANDARD (DOUBLE ARM-MOUNTED)
 

POST:	1113.501
TOP:	4105.190.500
LANTERN:	SN03
- LIGHTING STANDARD (SINGLE ARM-MOUNTED)
 

POST:	1113.501
TOP:	4105.190.500
LANTERN:	SN03

LUMINAIRES AND POLES ARE TO BE THE PRODUCT OF NERI OR APPROVED EQUAL.



- ### NOTES
- IT SHALL BE THE CONTRACTOR'S RESPONSIBILITY TO CHECK AND VERIFY ALL ANCHOR BOLT DIMENSIONS (SIZE, BOLT CIRCLE, ETC.) WITH THE POLE MANUFACTURER PRIOR TO INSTALLATION OF THE FOUNDATIONS.
  - CHAMFER EXPOSED EDGES OF ALL FOUNDATIONS.
  - PROVIDE INSULATED GROUNDING BUSHING ON EXPOSED ENDS (IN BASE OF POLE) OF ALL GALVANIZED STEEL BENDS.
  - COLOR OF LUMINAIRE SHALL MATCH COLOR OF POLE.
  - CONCRETE BASE IN PARKING AREAS: 2'-6" CONCRETE BASE IN LANDSCAPED AREAS: 2'
  - LIGHT POLE LENGTHS SHALL BE ADJUSTED DEPENDING ON MOUNTING APPLICATION SUCH AS LAWN AREAS, IN PARKING AREAS, AND MH. MOUNTING HEIGHT IS THE DISTANCE FROM THE GROUND BELOW THE LIGHT TO THE TOP OF THE LIGHT FIXTURE.
  - LIGHT FIXTURES ARE DARK SKY COMPLIANT WITH FULL CUT-OFF SHIELDS.

ANY ALTERATION OF PLANS, SPECIFICATIONS, PLATS AND REPORTS BEARING THE SEAL OF A LICENSED PROFESSIONAL ENGINEER OR LICENSED LAND SURVEYOR IS A VIOLATION OF SECTION 7209 OF THE NEW YORK STATE EDUCATION LAW, EXCEPT AS PROVIDED FOR BY SECTION 7209, SUBSECTION 2.

### Luminaire Schedule

Symbol	Qty	Model #	LLF	Description	Color Temperature
●	4	FDKB-34	0.900	PDKB-34 (Bollard Light)	4000K
★	2	CPG-LED-7L-CA-W-40	0.900	CPG-LED-7L-CA-W-40 (Canopy Light)	4000K
○	10	1113.501-4105.190.500-SN03	0.900	Nova N4 7500lm 4K NLG17 (Site Light)	4000K
○	3	1113.501-4105.190.500-SN03	0.900	Nova N4 7500lm 4K NLG17 HSS (Site Light with House Side Shield)	4000K

### Calculation Summary

Label	CalcType	Units	Avg	Max	Min	Avg/Min	Max/Min
Courtyard	ILLUMINANCE	Fc	1.66	7.4	0.1	16.60	74.00
Underpass	ILLUMINANCE	Fc	4.68	9.5	0.1	46.80	95.00
Parking Lot North	ILLUMINANCE	Fc	1.29	7.0	0.0	N.A.	N.A.
Parking Lot South	ILLUMINANCE	Fc	2.53	10.4	0.2	12.65	52.00

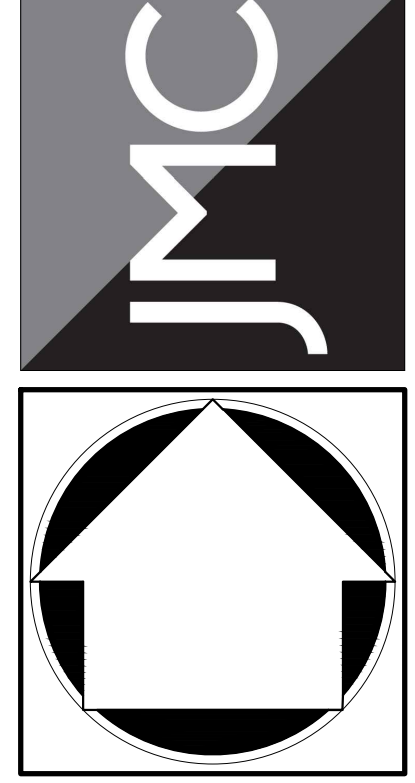
No.	Revision	Date	By
1.	REVISED PER CITY COMMENTS	12/30/19	AH
2.	REVISED PER CITY COMMENTS	02/24/2020	AH

Scale: 1" = 20'  
 Date: 10/29/2019  
 Project No: 18119  
 1819-LIGHTING LIGHTING LIGHT.scr  
 Drawing No: C-600 (Sheet 8 of 24)  
 Previous Editions Obsolete

APPLICANT/OWNER:  
**FARRELL BUILDING COMPANY**  
 2317 MONTAUK HIGHWAY  
 BRIDGEHAMPTON, NY 11932

ARCHITECT:  
**ARYEH SIEGEL ARCHITECT**  
 84 MASON CIRCLE  
 BEACON, NY 12508

JMC Planning, Engineering, Landscape Architecture & Land Surveying, PLLC  
 JMC Site Development Consultants, LLC  
 John Meyer Consulting, Inc.  
 120 BEDFORD ROAD - ARMONK, NY 10504  
 voice: 914.273.5225 - fax: 914.273.2102  
 www.jmcplc.com



**LIGHTING PLAN**

BEACON COMMONS  
 16 WEST MAIN STREET  
 BEACON, NY 12508

Drawn: AH Approved: SS  
 Scale: 1" = 20'  
 Date: 10/29/2019  
 Project No: 18119  
 1819-LIGHTING LIGHTING LIGHT.scr  
 Drawing No: C-600 (Sheet 8 of 24)  
 Previous Editions Obsolete