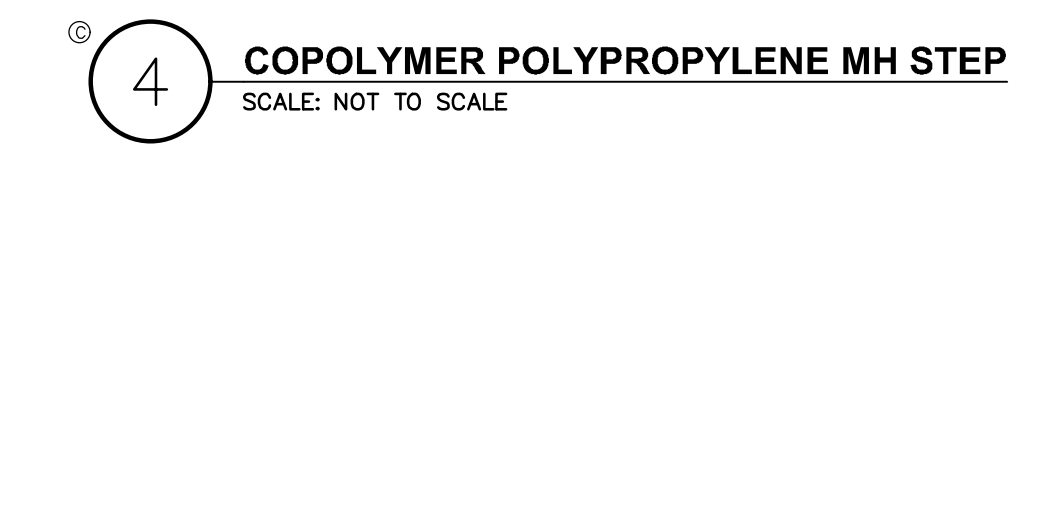


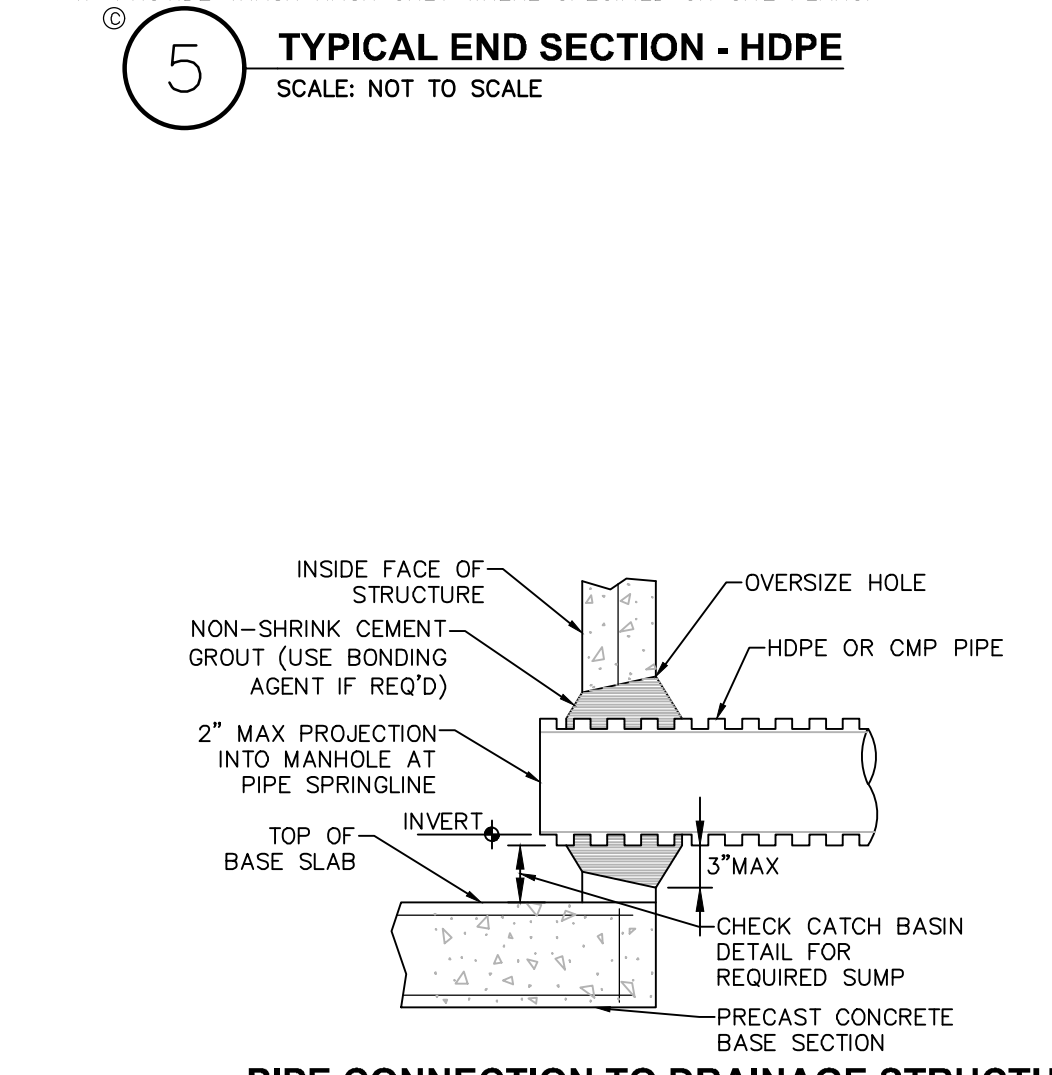
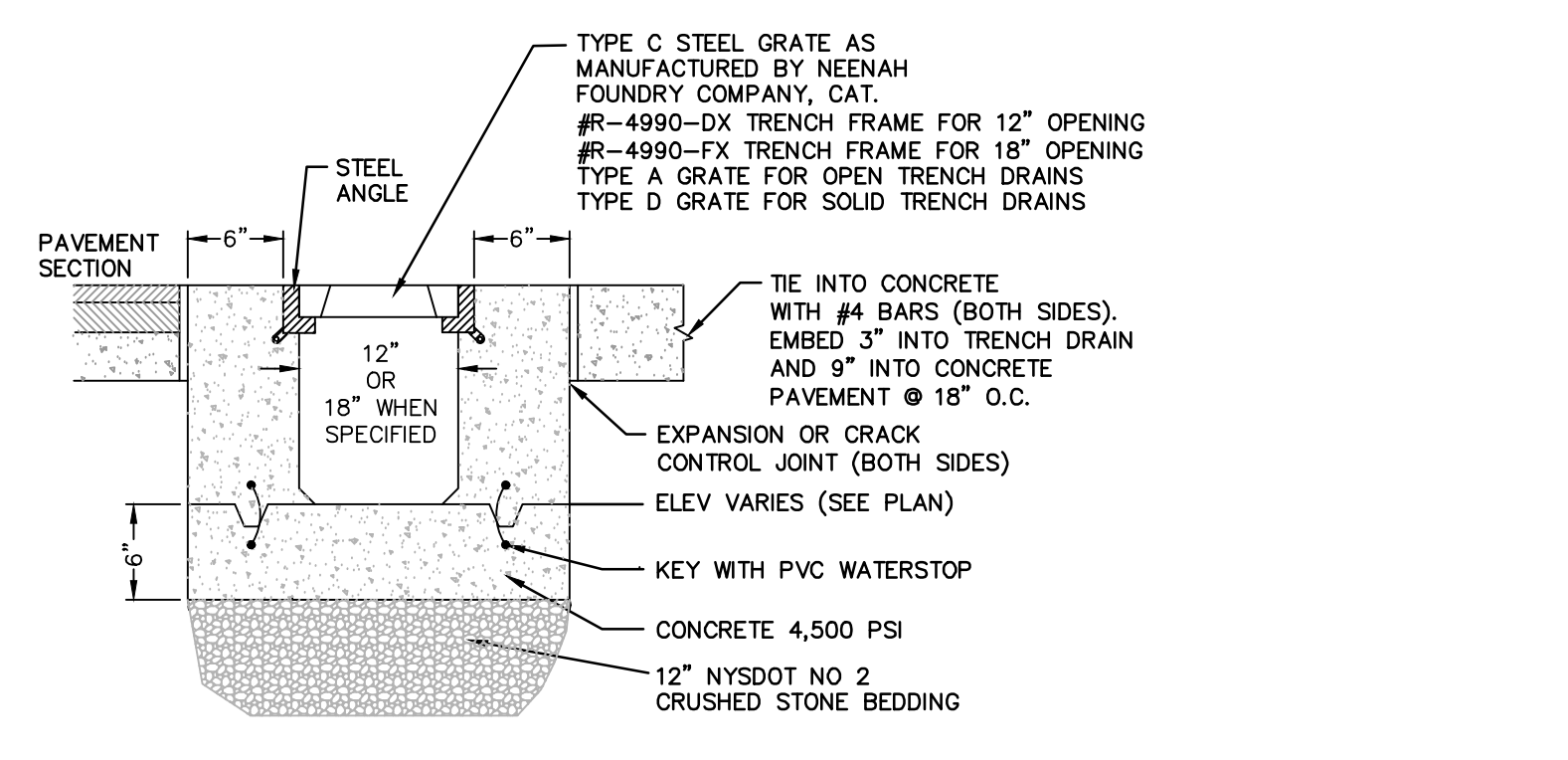
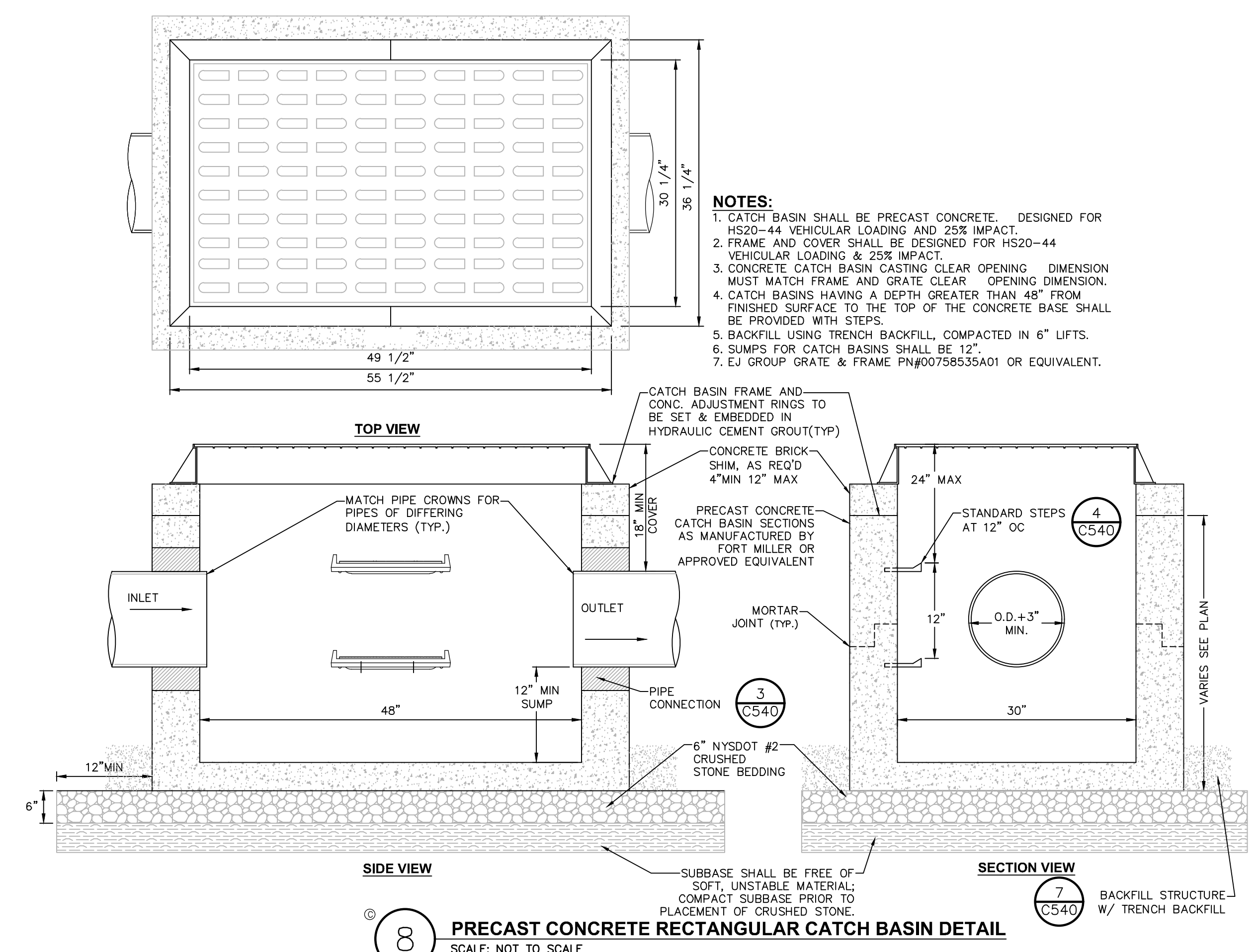
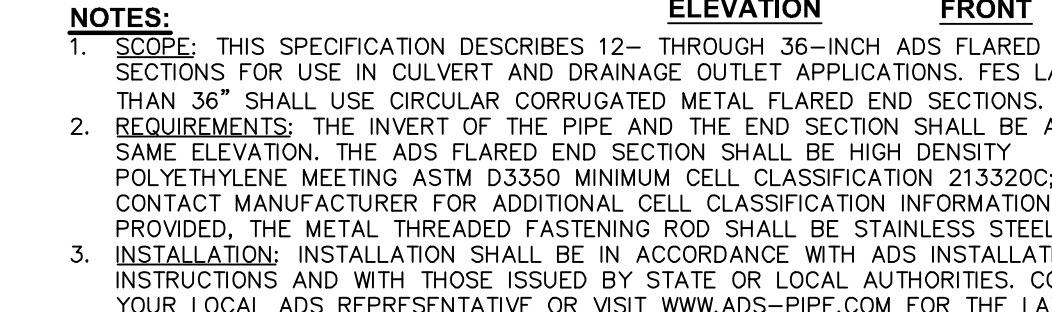
NY FRAME & GRATE PART NUMBER	ACCESSIBLE GRATE OPTION
24-224 V-5634	V-5634-80
30-230 V-5630	V-5630-80
30-234 V-5636	V-5636-80
30-448 V-5669	V-5669-80
36-231 V-5636	V-5636-80
36-448 V-5670	V-5670-80

ACCEPTABLE MANHOLE STEPS					
MANUFACTURER	PATTERN NUMBER	STEP WIDTH	STEP LENGTH	STEP RING CLEAR	STEP RING CLEAR
M.A. INDUSTRIES INC*	PS2-PF	14 3/4"	9 1/4"	13 3/4"	3 3/8"
M.A. INDUSTRIES INC*	PS2-PS	14 3/4"	8 1/4"	13 3/4"	3 3/8"

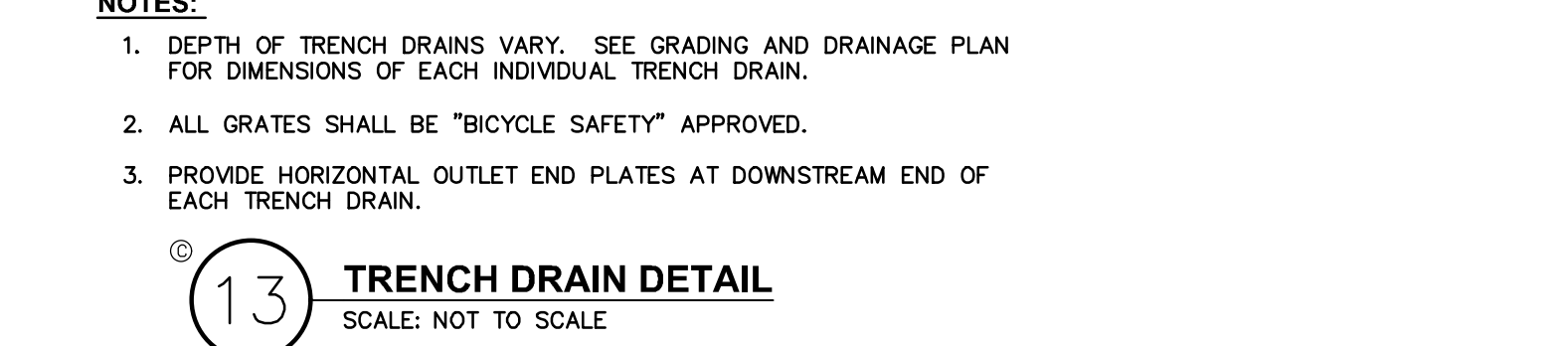
* OR EQUIVALENT
MH STEP DESIGN AND INSTALLATION SHALL COMPLY WITH ALL OSHA REGULATIONS



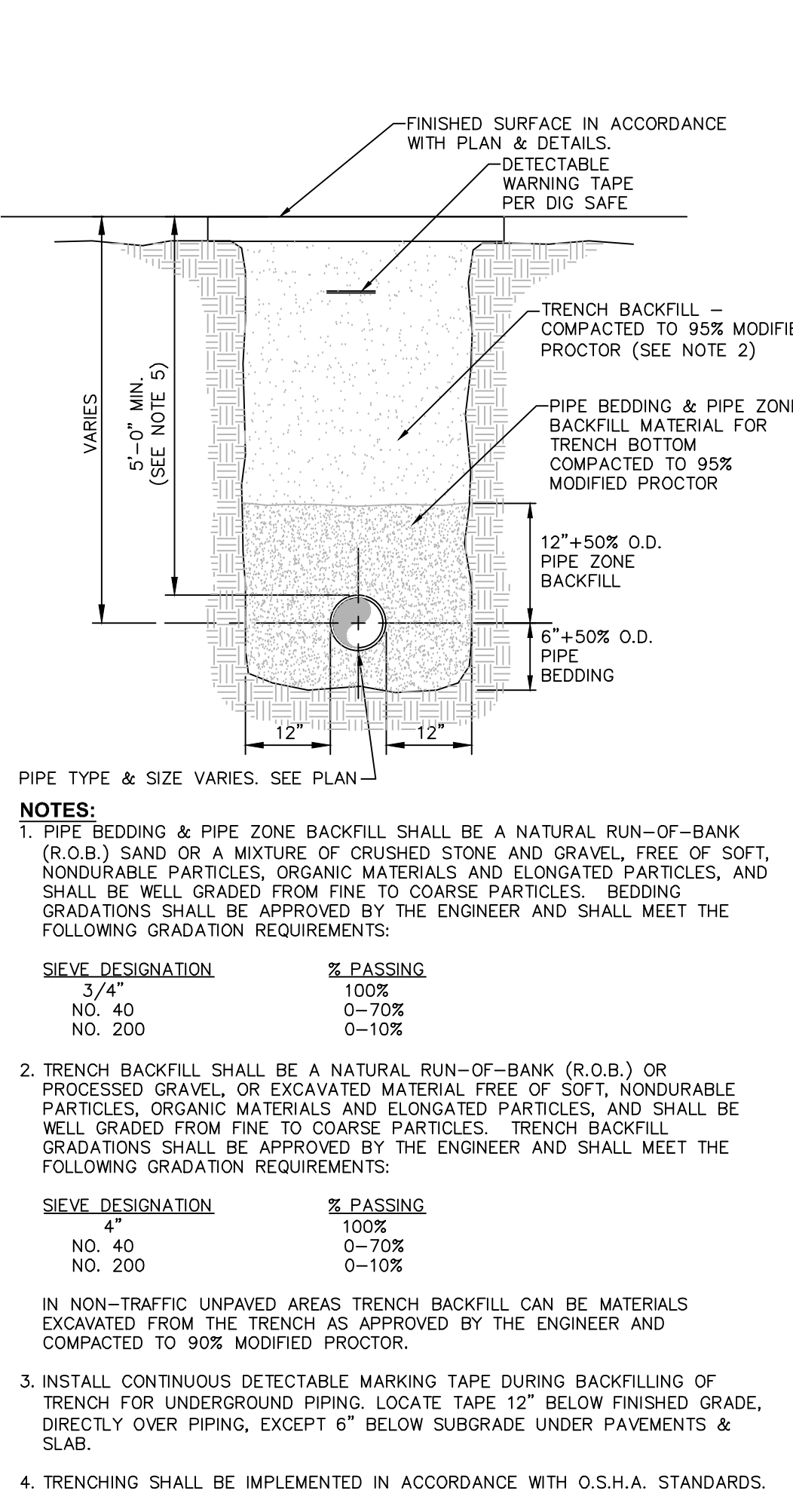
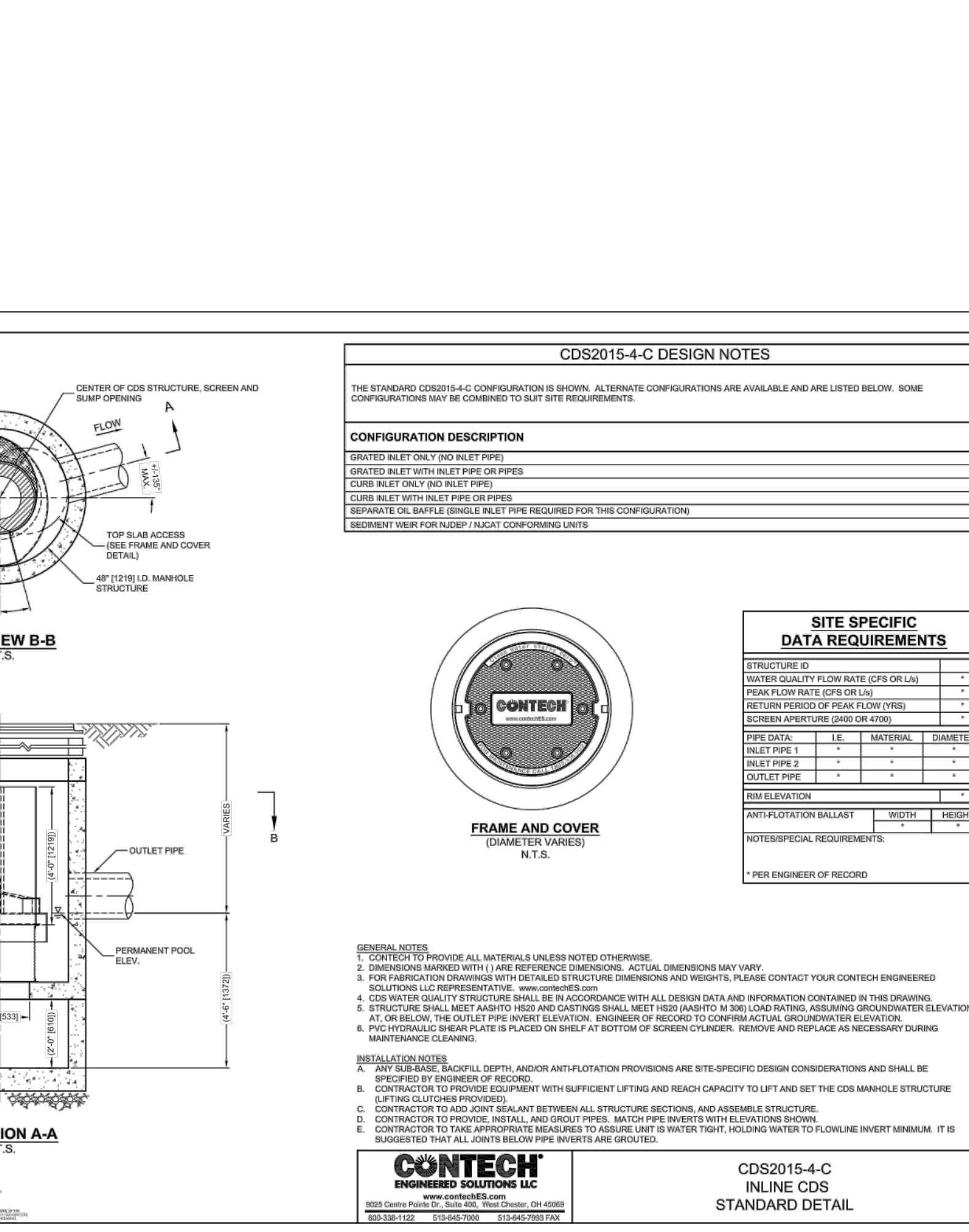
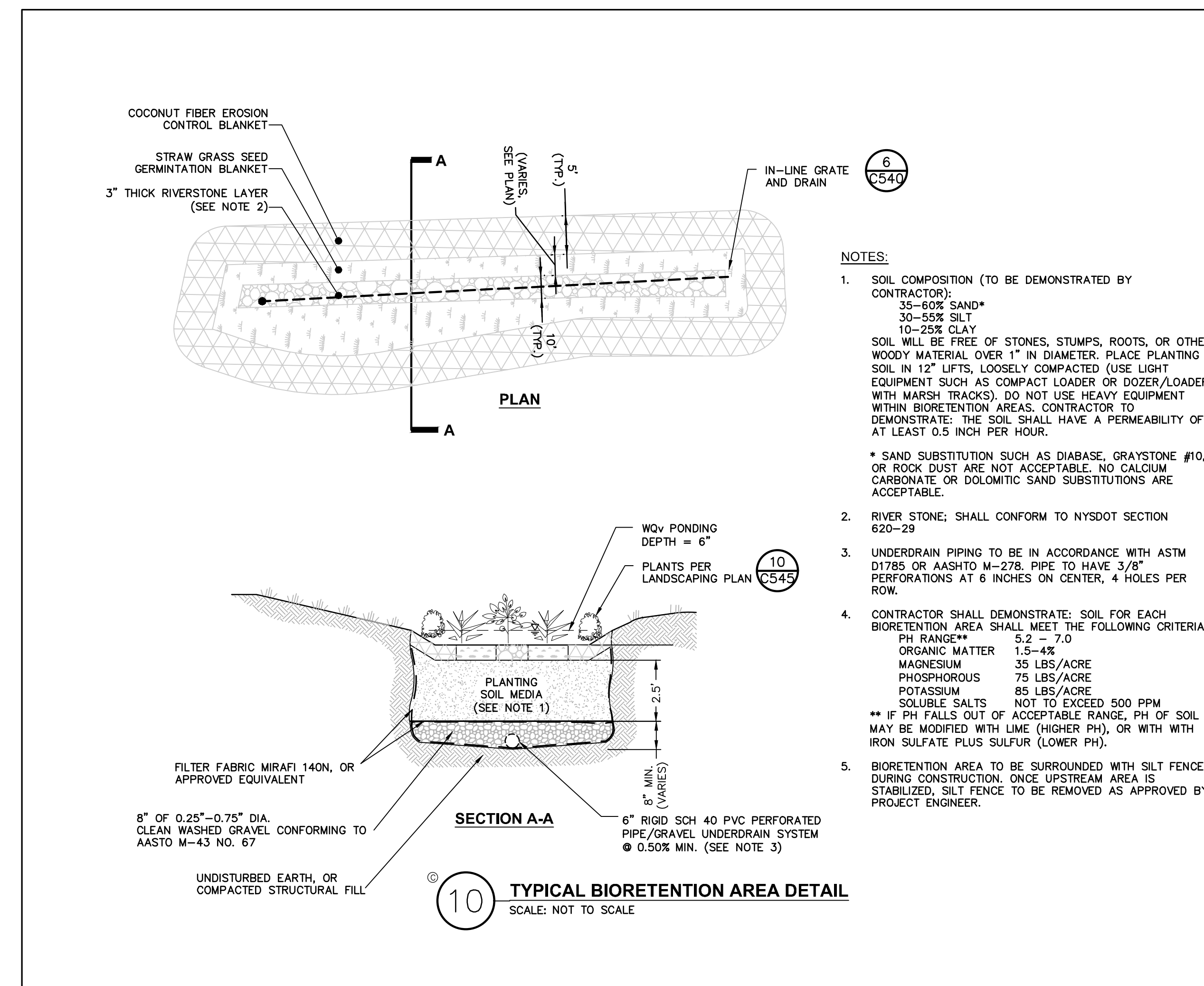
TYPICAL HDPE END SECTION			
PIPE DIA.	E	G	D
12"	42"	14"	34"
18"	59"	21"	48"
24"	76"	28"	64"
30"	92"	34"	80"
36"	109"	41"	96"



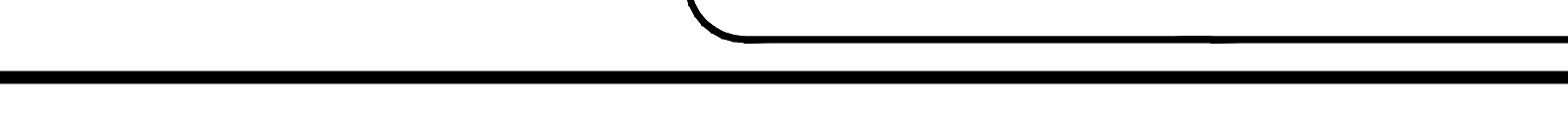
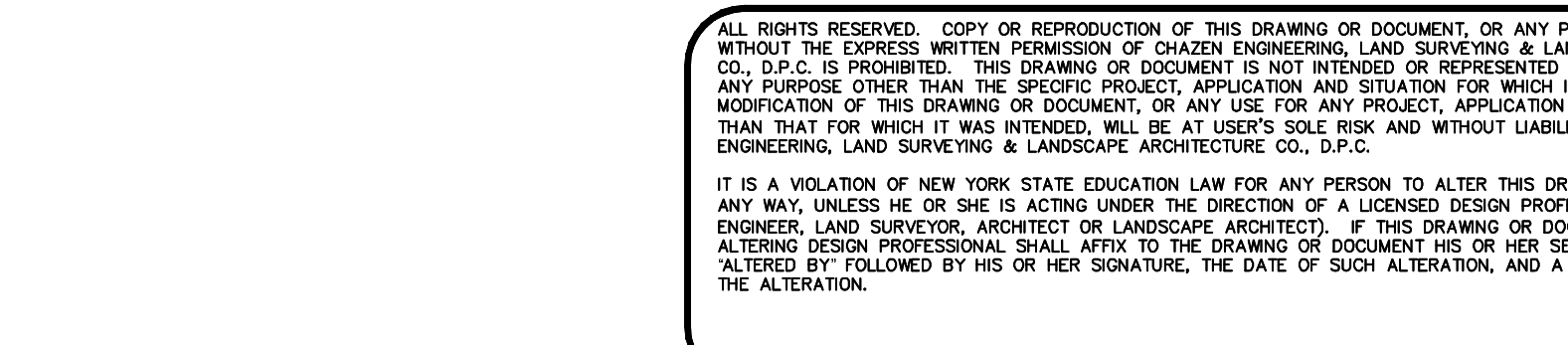
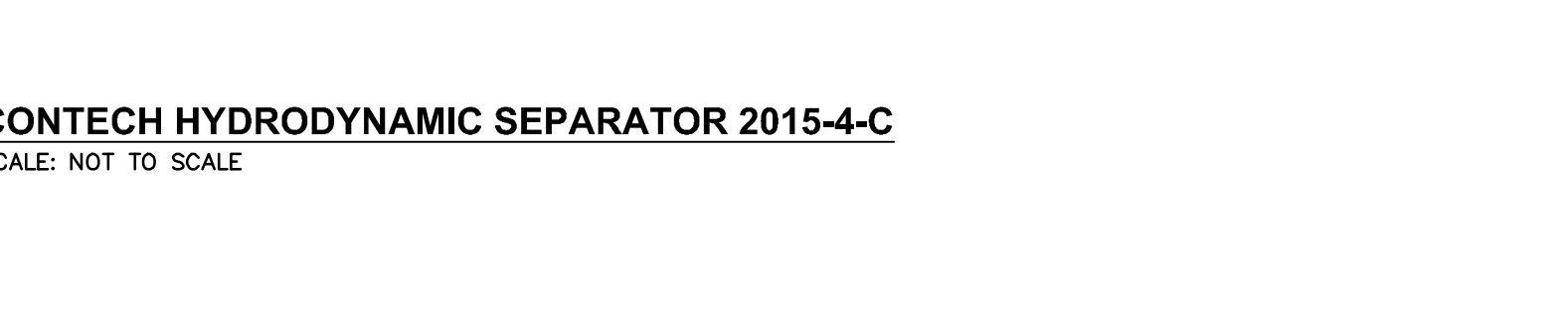
IN-LINE DRAIN DIMENSIONS						
BODY/ADAPTOR	B	C	E	MIN	INV	DEPTH
8"	6"	5.25"	4.21"	12.75"	2"	0"
8"	6"	7.25"	5.25"	13.25"	2"	0"
10"	6"	6.25"	4.21"	12.75"	2"	0"
10"	6"	6.50"	5.25"	13.25"	2"	0"
10"	10"	7.25"	6.08"	23.75"	2"	0"
12"	6"	11.50"	4.21"	12.75"	2"	0"
12"	10"	11.25"	6.08"	23.75"	2"	0"
12"	12"	11.25"	6.45"	23.50"	3"	0"



SIEVE DESIGNATION		% PASSING
Nº 4	100%	
Nº 10	0-7%	
Nº 20	0-10%	



SIEVE DESIGNATION		% PASSING
Nº 4	100%	
Nº 10	0-7%	
Nº 20	0-10%	



CHAZEN ENGINEERING, LAND SURVEYING

LANDSCAPE ARCHITECTURE CO., D.P.C.

Office Locations:

- Dutchess County Office: 20 Elm Street, Suite 110, Glen Falls, New York 12801
- North County Office: 1 North Broadway, Suite 803, White Plains, New York 10601
- South County Office: 2415 21st Ave S, Suite 1033, Nashville, Tennessee 37212
- Chattanooga Office: 437 E 9th St, Suite 203, Chattanooga, Tennessee 37403

REV.	DATE	DESCRIPTION
2	09/28/20	REVISED PER PLANNING BOARD COMMENTS
1	12/20/19	REVISED PER PLANNING BOARD COMMENTS

248 TIORONDA AVE., BEACON, N.Y.

STORM SEWER DETAILS

CITY OF BEACON, DUTCHESS COUNTY, NEW YORK

DESIGNED	CHECKED
DATE	DATE
BY	BY

C540

13 of 17